

Title Plan - LT 571061

Survey Number LT 571061
Surveyor Reference 27516 Aotea Stage 18B
Surveyor Rachel Isabella Charlesworth
Survey Firm Cuttriss Consultants Ltd
Surveyor Declaration I Rachel Isabella Charlesworth, being a licensed cadastral surveyor, certify that--
 (a) this dataset provided by me and its related survey are accurate, correct and in accordance with the Cadastral Survey Act 2002 and Cadastral Survey Rules 2021; and
 (b) the survey was undertaken by me or under my personal direction.
 Declared on 23 Mar 2022 12:02 PM

Survey Details

Dataset Description Lots 1, 100, 282, 284, 285, 1339-1373, 1408 and 1410-1418 being a subdivision of Lot 200 DP 564485 and Lot 273 DP 498135
Status Approved as to Survey
Land District Wellington **Survey Class** Class A
Submitted Date 23/03/2022 **Survey Approval Date** 06/04/2022
Deposit Date

Territorial Authorities

Porirua City

Comprised In

RT 1006036
RT 1006037

Created Parcels

Parcels	Parcel Intent	Area	RT Reference
Lot 1 Deposited Plan 571061	Fee Simple Title	0.0568 Ha	Multiple
Lot 100 Deposited Plan 571061	Vesting on Deposit for Road	0.7858 Ha	
Lot 282 Deposited Plan 571061	Vesting on Deposit for Local Purpose Reserve	1.9507 Ha	1033591
Lot 284 Deposited Plan 571061	Vesting on Deposit for Recreation Reserve (Territorial Authority)	14.3772 Ha	1033592
Lot 285 Deposited Plan 571061	Vesting on Deposit for Local Purpose Reserve	1.0196 Ha	1033593
Lot 1339 Deposited Plan 571061	Fee Simple Title	0.0519 Ha	1033594
Lot 1340 Deposited Plan 571061	Fee Simple Title	0.0500 Ha	1033595
Lot 1341 Deposited Plan 571061	Fee Simple Title	0.0500 Ha	1033596
Lot 1342 Deposited Plan 571061	Fee Simple Title	0.0501 Ha	1033597
Lot 1343 Deposited Plan 571061	Fee Simple Title	0.0642 Ha	1033598
Lot 1344 Deposited Plan 571061	Fee Simple Title	0.0643 Ha	1033599
Lot 1345 Deposited Plan 571061	Fee Simple Title	0.0516 Ha	1033600
Lot 1346 Deposited Plan 571061	Fee Simple Title	0.0517 Ha	1033601
Lot 1347 Deposited Plan 571061	Fee Simple Title	0.0507 Ha	1033602

Title Plan - LT 571061

Created Parcels

Parcels	Parcel Intent	Area	RT Reference
Lot 1348 Deposited Plan 571061	Fee Simple Title	0.0573 Ha	1033603
Lot 1349 Deposited Plan 571061	Fee Simple Title	0.0503 Ha	1033604
Lot 1350 Deposited Plan 571061	Fee Simple Title	0.0500 Ha	1033605
Lot 1351 Deposited Plan 571061	Fee Simple Title	0.0504 Ha	1033606
Lot 1352 Deposited Plan 571061	Fee Simple Title	0.0601 Ha	1033607
Lot 1353 Deposited Plan 571061	Fee Simple Title	0.0964 Ha	1033608
Lot 1354 Deposited Plan 571061	Fee Simple Title	0.0794 Ha	1033609
Lot 1355 Deposited Plan 571061	Fee Simple Title	0.0796 Ha	1033610
Lot 1356 Deposited Plan 571061	Fee Simple Title	0.0870 Ha	1033611
Lot 1357 Deposited Plan 571061	Fee Simple Title	0.1054 Ha	1033612
Lot 1358 Deposited Plan 571061	Fee Simple Title	0.0963 Ha	1033613
Lot 1359 Deposited Plan 571061	Fee Simple Title	0.0604 Ha	1033614
Lot 1360 Deposited Plan 571061	Fee Simple Title	0.0601 Ha	1033615
Lot 1361 Deposited Plan 571061	Fee Simple Title	0.0593 Ha	1033616
Lot 1362 Deposited Plan 571061	Fee Simple Title	0.0593 Ha	1033617
Lot 1363 Deposited Plan 571061	Fee Simple Title	0.0600 Ha	1033618
Lot 1364 Deposited Plan 571061	Fee Simple Title	0.0709 Ha	1033619
Lot 1365 Deposited Plan 571061	Fee Simple Title	0.0604 Ha	1033620
Lot 1366 Deposited Plan 571061	Fee Simple Title	0.0508 Ha	1033621
Lot 1367 Deposited Plan 571061	Fee Simple Title	0.0509 Ha	1033622
Lot 1368 Deposited Plan 571061	Fee Simple Title	0.0518 Ha	1033623
Lot 1369 Deposited Plan 571061	Fee Simple Title	0.0528 Ha	1033624
Lot 1370 Deposited Plan 571061	Fee Simple Title	0.0549 Ha	1033625
Lot 1371 Deposited Plan 571061	Fee Simple Title	0.0621 Ha	1033626
Lot 1372 Deposited Plan 571061	Fee Simple Title	0.0716 Ha	1033627
Lot 1373 Deposited Plan 571061	Fee Simple Title	0.0853 Ha	1033628
Lot 1408 Deposited Plan 571061	Fee Simple Title	0.0701 Ha	1033629
Lot 1410 Deposited Plan 571061	Fee Simple Title	0.0579 Ha	1033630
Lot 1411 Deposited Plan 571061	Fee Simple Title	0.0709 Ha	1033631
Lot 1412 Deposited Plan 571061	Fee Simple Title	0.0963 Ha	1033632
Lot 1413 Deposited Plan 571061	Fee Simple Title	0.0668 Ha	1033633
Lot 1414 Deposited Plan 571061	Fee Simple Title	0.0670 Ha	1033634
Lot 1415 Deposited Plan 571061	Fee Simple Title	0.0605 Ha	1033635
Lot 1416 Deposited Plan 571061	Fee Simple Title	0.0546 Ha	1033636
Lot 1417 Deposited Plan 571061	Fee Simple Title	0.0549 Ha	1033637
Lot 1418 Deposited Plan 571061	Fee Simple Title	0.0630 Ha	1033638
Area A Deposited Plan 571061	Easement		
Area B Deposited Plan 571061	Easement		
Area C Deposited Plan 571061	Easement		
Area D Deposited Plan 571061	Easement		
Area V Deposited Plan 571061	Easement		
Area AA Deposited Plan 571061	Covenant - Land		
Area AB Deposited Plan 571061	Covenant - Land		
Area AC Deposited Plan 571061	Covenant - Land		

Title Plan - LT 571061

Created Parcels

Parcels	Parcel Intent	Area	RT Reference
Area AD Deposited Plan 571061	Covenant - Land		
Area AE Deposited Plan 571061	Covenant - Land		
Area AF Deposited Plan 571061	Covenant - Land		
Area AG Deposited Plan 571061	Covenant - Land		
Area AH Deposited Plan 571061	Covenant - Land		
Area AI Deposited Plan 571061	Covenant - Land		
Area AJ Deposited Plan 571061	Covenant - Land		
Area AK Deposited Plan 571061	Covenant - Land		
Area AL Deposited Plan 571061	Covenant - Land		
Area AM Deposited Plan 571061	Covenant - Land		
Area AN Deposited Plan 571061	Covenant - Land		
Area AO Deposited Plan 571061	Covenant - Land		
Area AP Deposited Plan 571061	Covenant - Land		
Area AQ Deposited Plan 571061	Covenant - Land		
Area AR Deposited Plan 571061	Covenant - Land		
Area AS Deposited Plan 571061	Covenant - Land		
Area AT Deposited Plan 571061	Covenant - Land		
Area AU Deposited Plan 571061	Covenant - Land		
Area AV Deposited Plan 571061	Covenant - Land		
Area AW Deposited Plan 571061	Covenant - Land		
Area AX Deposited Plan 571061	Covenant - Land		
Area AY Deposited Plan 571061	Covenant - Land		
Area AZ Deposited Plan 571061	Covenant - Land		
Area BA Deposited Plan 571061	Covenant - Land		
Area BB Deposited Plan 571061	Covenant - Land		
Area BC Deposited Plan 571061	Covenant - Land		
Area BD Deposited Plan 571061	Covenant - Land		
Area BE Deposited Plan 571061	Covenant - Land		
Area BF Deposited Plan 571061	Covenant - Land		
Area BG Deposited Plan 571061	Covenant - Land		
Area BH Deposited Plan 571061	Covenant - Land		
Area BI Deposited Plan 571061	Covenant - Land		
Area BJ Deposited Plan 571061	Covenant - Land		
Area BK Deposited Plan 571061	Covenant - Land		
Area BL Deposited Plan 571061	Covenant - Land		
Area BM Deposited Plan 571061	Covenant - Land		
Area BN Deposited Plan 571061	Covenant - Land		
Area BO Deposited Plan 571061	Covenant - Land		
Area BP Deposited Plan 571061	Covenant - Land		
Area BQ Deposited Plan 571061	Covenant - Land		
Area BR Deposited Plan 571061	Covenant - Land		
Area BS Deposited Plan 571061	Covenant - Land		
Area BT Deposited Plan 571061	Covenant - Land		
Area BU Deposited Plan 571061	Covenant - Land		



Title Plan - LT 571061

Created Parcels

Parcels	Parcel Intent	Area	RT Reference
Area BV Deposited Plan 571061	Covenant - Land		
Area BW Deposited Plan 571061	Covenant - Land		
Area BX Deposited Plan 571061	Covenant - Land		
Area BY Deposited Plan 571061	Covenant - Land		
Area BZ Deposited Plan 571061	Covenant - Land		
Area CA Deposited Plan 571061	Covenant - Land		
Area CB Deposited Plan 571061	Covenant - Land		
Area CC Deposited Plan 571061	Covenant - Land		
Area CD Deposited Plan 571061	Covenant - Land		
Area CE Deposited Plan 571061	Covenant - Land		
Area GB Deposited Plan 571061	Easement		
Area ZH Deposited Plan 571061	Easement		
Area ZI Deposited Plan 571061	Easement		
Total Area		<hr/> 21.0594 Ha	

Plan Number	DP 571061
--------------------	-----------

Memorandum of Easements (Pursuant to s243 Resource Management Act 1991)			
Purpose	Shown	Burdened Land (Servient Tenement)	Benefited Land (Dominant Tenement)
Right of way, right to drain sewage and water, right to convey water, electricity, gas and telecommunications	Lot 1	Lot 1	Lots 1339 - 1347
Right to drain sewage and water	V	Lot 284	Lot 1358

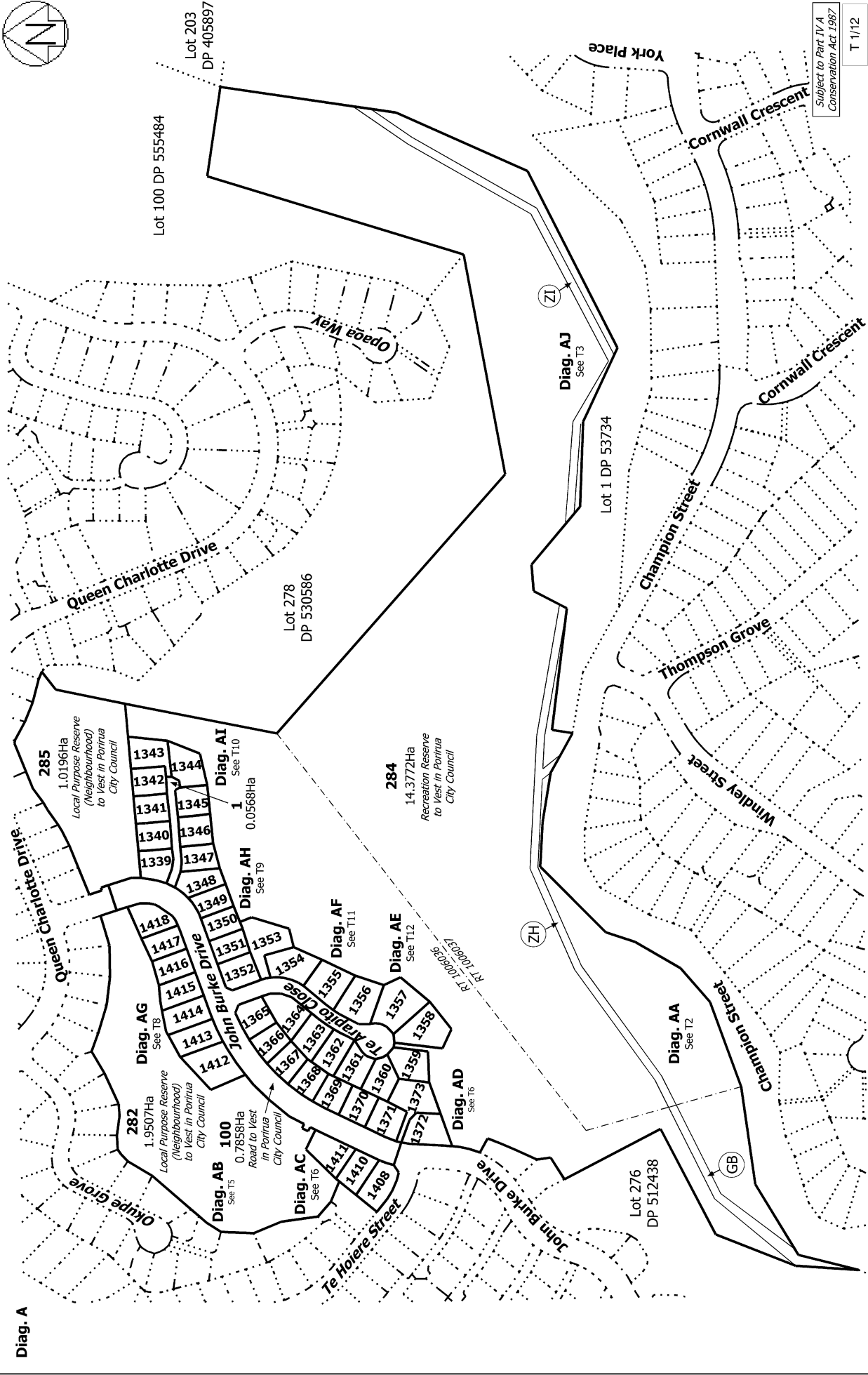
Memorandum of Easements in Gross (Pursuant to s243 Resource Management Act 1991)			
Purpose	Shown	Burdened Land (Servient Tenement)	Grantee
Right to drain water and sewage	A	Lot 1359	Porirua City Council
	B	Lot 1373	
	C	Lot 1372	
	Lot 1	Lot 1	
Right to drain water	D	Lot 1372	Porirua City Council
Right to convey water	Lot 1	Lot 1	Porirua City Council
Right to convey electricity and telecommunications	Lot 1	Lot 1	Wellington Electricity Lines Limited
Right to convey gas	Lot 1	Lot 1	Powerco Limited
Right to convey telecommunications	Lot 1	Lot 1	Chorus New Zealand Limited

Schedule of Existing Easements in Gross				
Purpose	Shown	Burdened Land (Servient Tenement)	Grantee	Created by
Right to drain sewage	GB, ZH, ZI	Lot 284	Porirua City Council	T. B 686066.3

Schedule of Existing Easements in Gross to be Surrendered			
Purpose	Shown	Grantee	Created by
Right to convey water	ZA on DP 564485	Porirua City Council	E.I. 12221449.28

Amalgamation Condition
That Lot 1 hereon (legal access) be held as to nine undivided one-ninth shares by the owners of Lots 1339 - 1347 hereon as tenants in common in the said shares and that individual records of title be issued in accordance therewith (LINZ request 1654097).

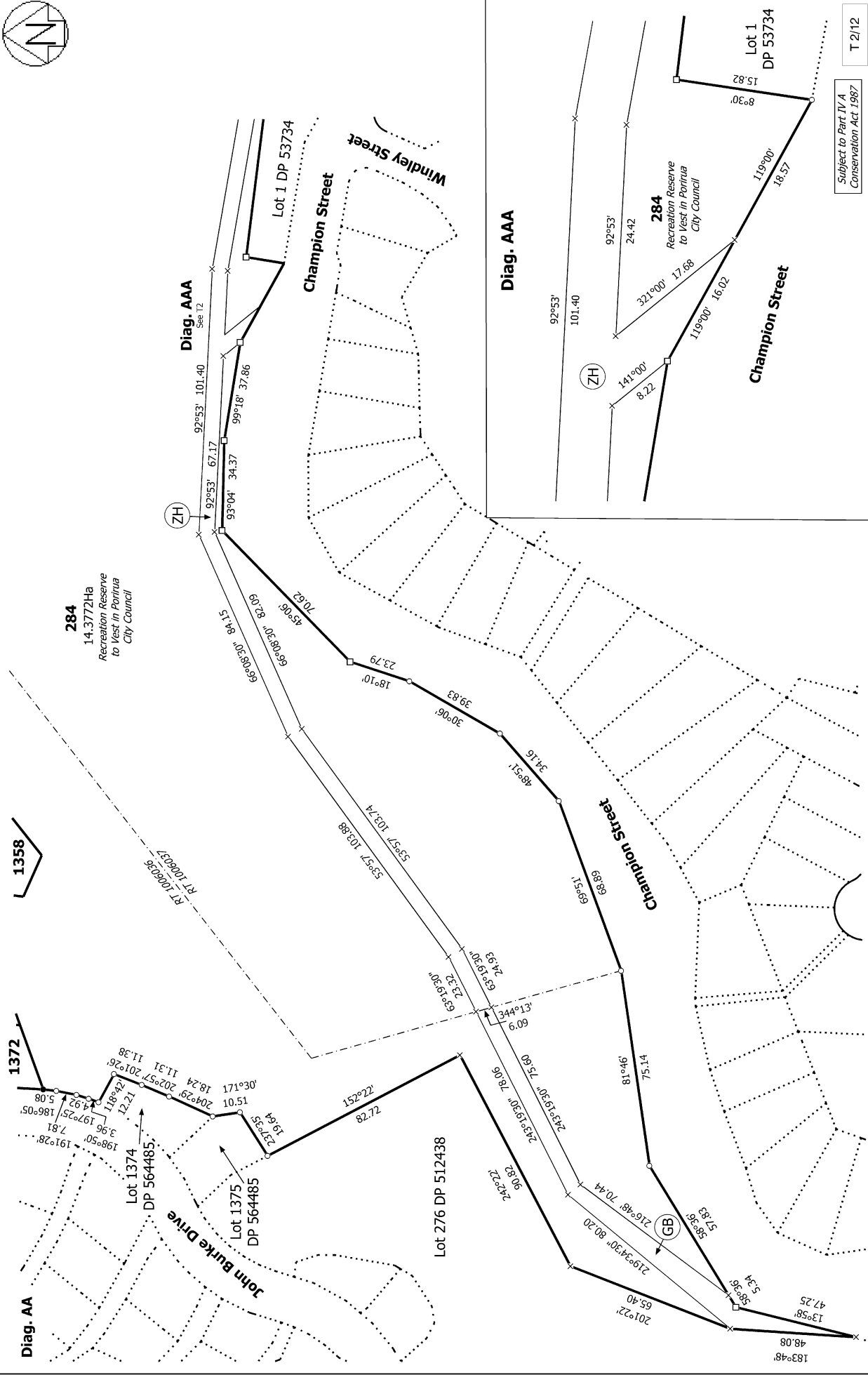
Areas A-C, AA-AZ, BA-BZ and CA-CE are to be subject to consent notices.



Subject to Part IV A
Conservation Act 1987

T 1/12

<p>Land District: Wellington</p> <p>Digitally Generated Plan Generated on: 06/04/2022 2:37 pm Page 7 of 18</p>	<p>Lots 1, 100, 282, 284, 285, 1339-1373, 1408 and 1410-1418 being a subdivision of Lot 200 DP 564485 and Lot 273 DP 498135</p>	<p>Surveyor: Rachel Isabella Charlesworth Firm: Cuttriss Consultants Ltd</p>	<p>Title Plan LT 571061 Approved on: 6/04/2022</p>
---	---	--	--



Land District: Wellington

Digitally Generated Plan
Generated on: 06/04/2022 2:37pm Page 6 of 18

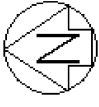
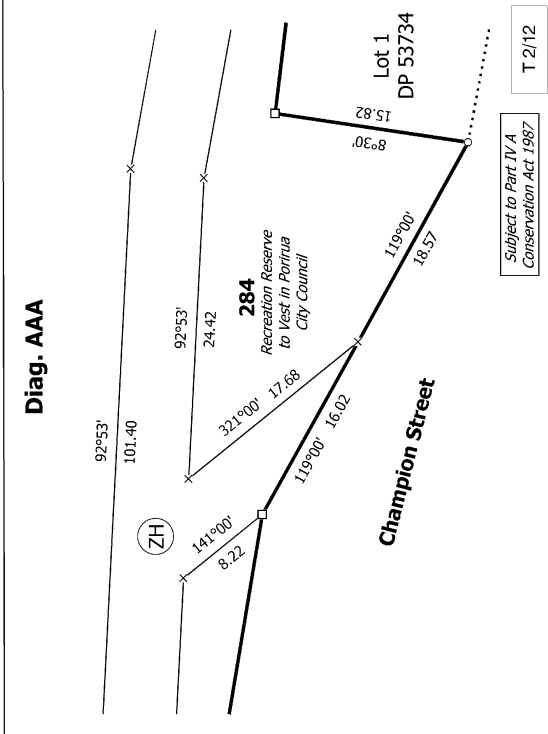
Title Plan
LT 571061
Approved on: 6/04/2022

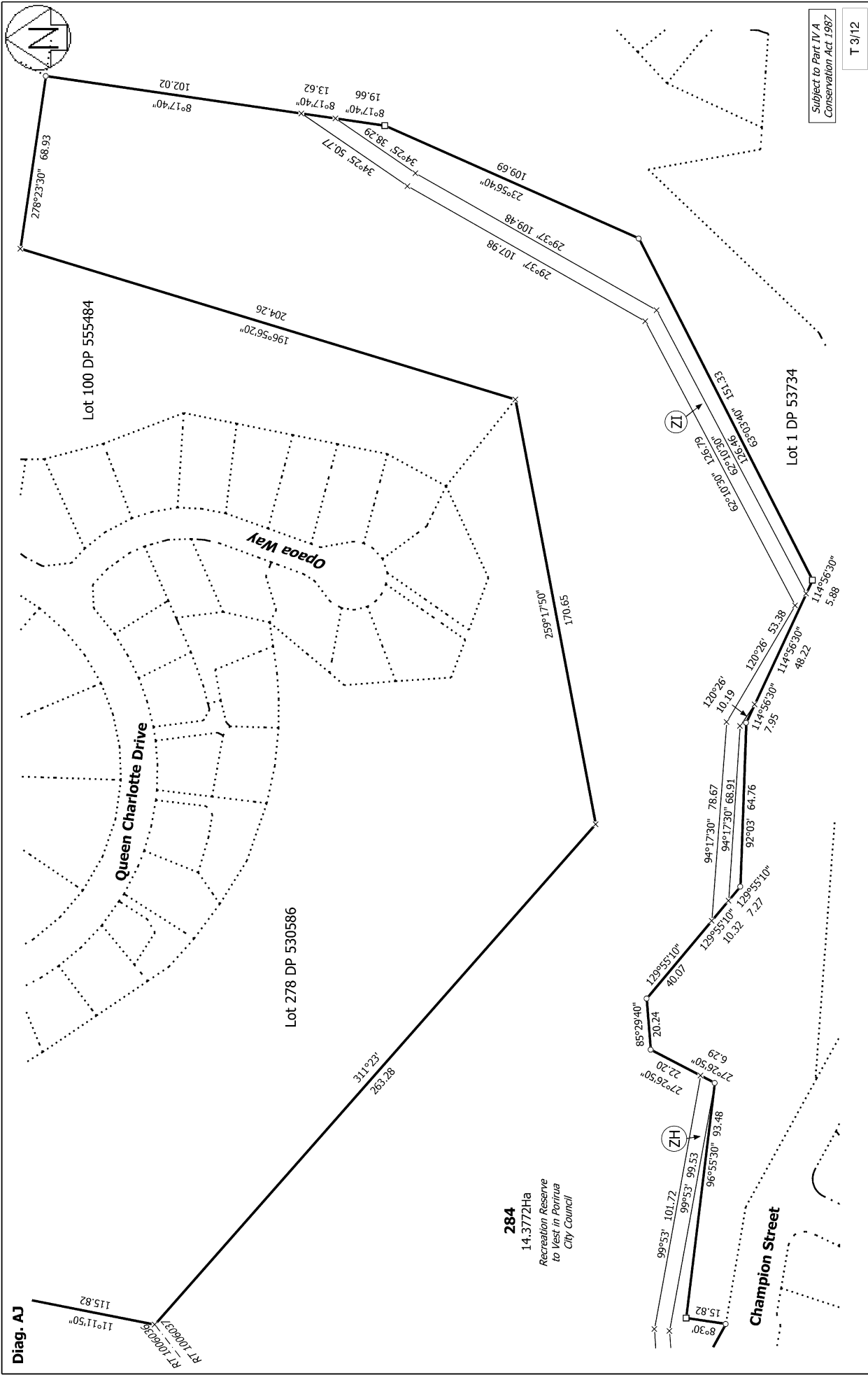
Surveyor: Rachel Isabella Charlesworth
Firm: Cuttriss Consultants Ltd

Lots 1, 100, 282, 284, 285, 1339-1373, 1408 and 1410-1418 being a subdivision of Lot 200 DP 564485 and Lot 273 DP 498135

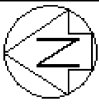
Subject to Part IV A Conservation Act 1987

T 2/12

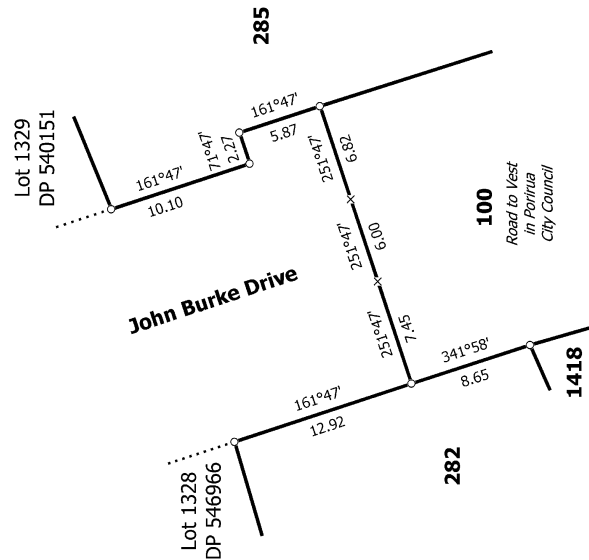




<p>Land District: Wellington</p> <p>Digitally Generated Plan Generated on: 06/04/2022 2:37pm Page 9 of 18</p>	<p>Lots 1, 100, 282, 284, 285, 1339-1373, 1408 and 1410-1418 being a subdivision of Lot 200 DP 564485 and Lot 273 DP 498135</p>	<p>Surveyor: Rachel Isabella Charlesworth Firm: Cuttriss Consultants Ltd</p>	<p>Title Plan LT 571061 Approved on: 6/04/2022</p>
--	--	--	---



Diag. AHC



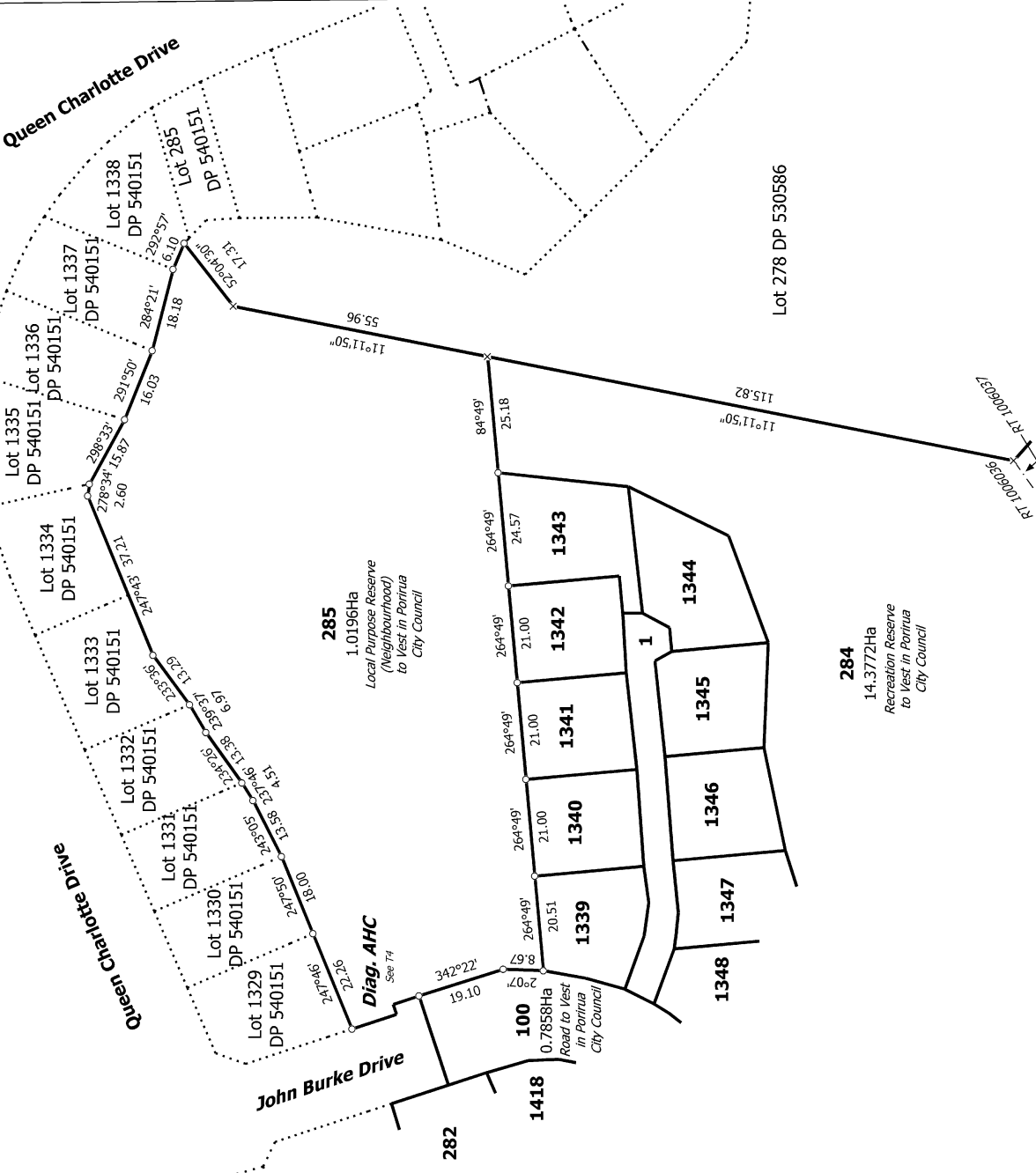
Subject to Part IV A Conservation Act 1987

T 4/12

Title Plan
LT 571061
Approved on: 6/04/2022

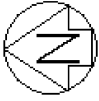
Surveyor: Rachel Isabella Charlesworth
Firm: Cuttriss Consultants Ltd

Diag. B



Lots 1, 100, 282, 284, 285, 1339-1373, 1408 and 1410-1418 being a subdivision
of Lot 200 DP 564485 and Lot 273 DP 498135

Land District: Wellington
Digitally Generated Plan
Generated on: 06/04/2022 2:37pm Page 10 of 18



Diag. ABB

Queen Charlotte Drive

Diag. AB

Diag. AHB

John Burke Drive

Te Hohe Street

Subject to Part IV A Conservation Act 1987

T 5/12

Land District: Wellington

Digitally Generated Plan

Generated on: 06/04/2022 2:37pm Page 11 of 18

Lots 1, 100, 282, 284, 285, 1339-1373, 1408 and 1410-1418 being a subdivision

of Lot 200 DP 564485 and Lot 273 DP 498135

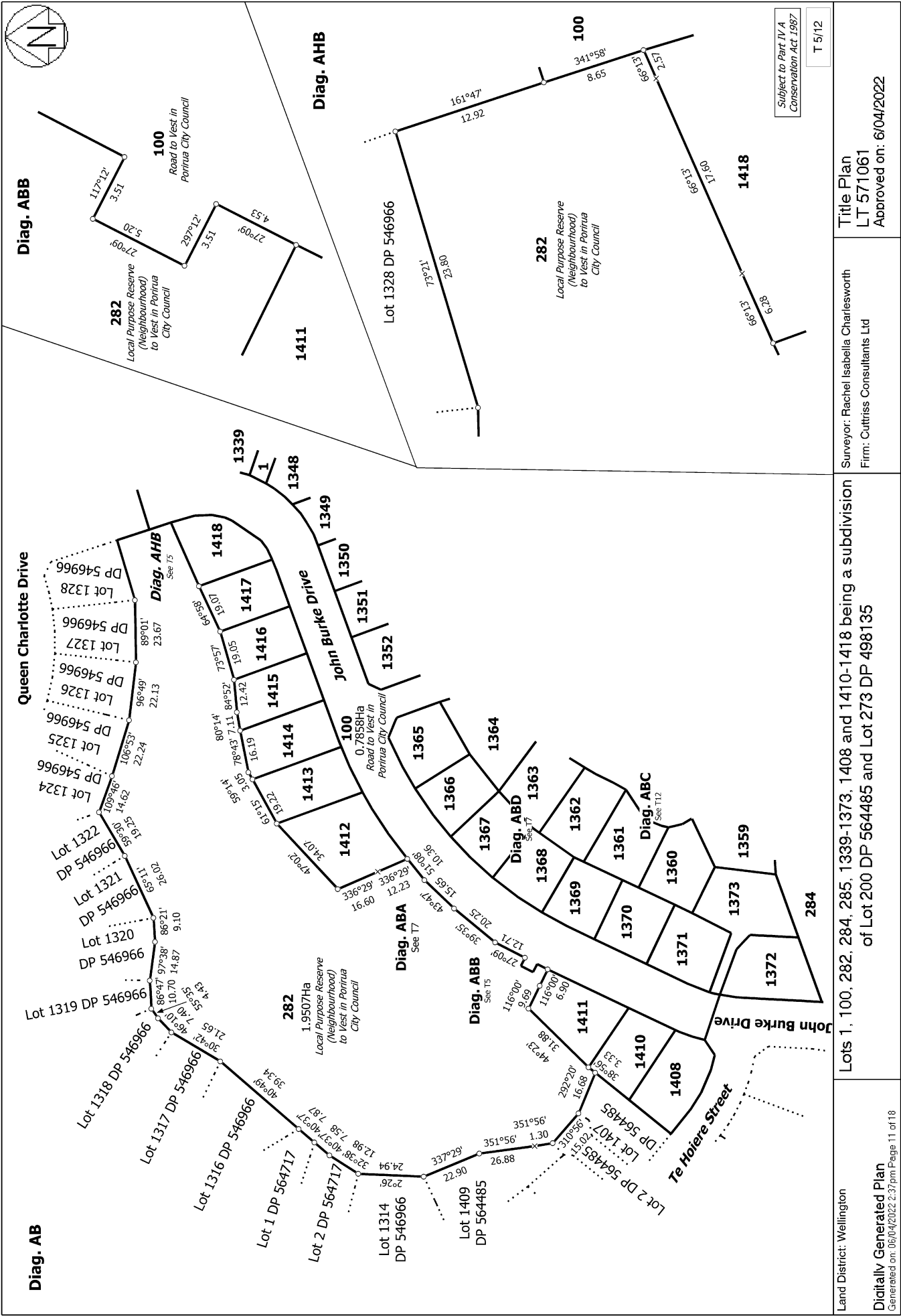
Surveyor: Rachel Isabella Charlesworth

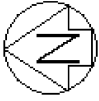
Firm: Cuttriss Consultants Ltd

Title Plan

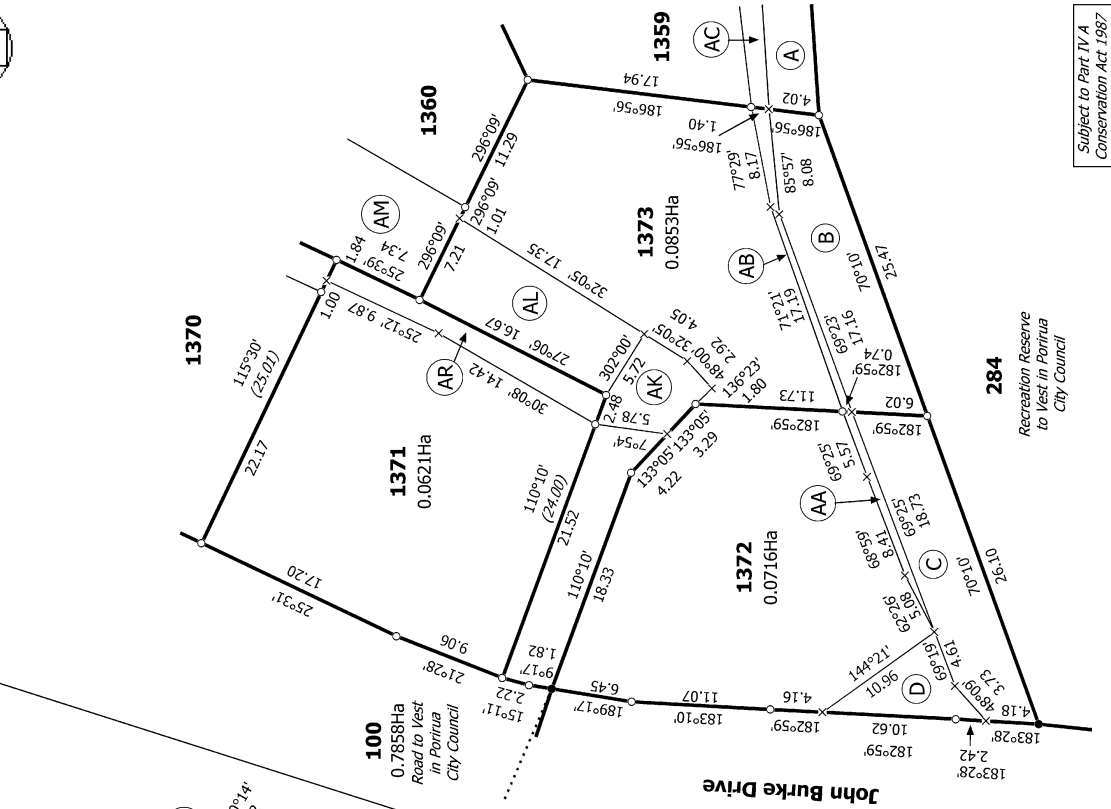
LT 571061

Approved on: 6/04/2022





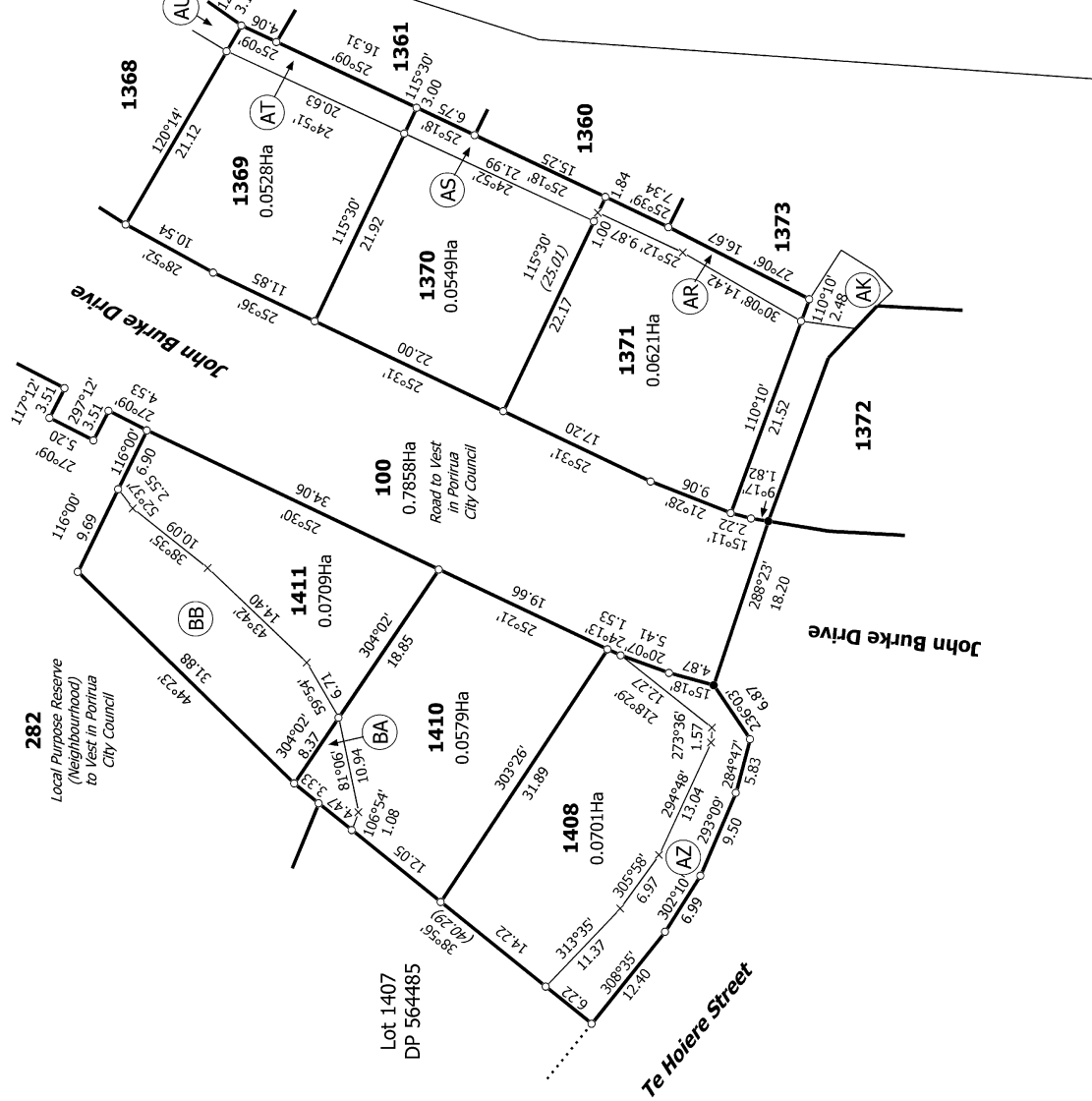
Diag. AD



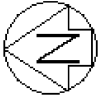
Subject to Part IV.4
Conservation Act 1987

T 6/12

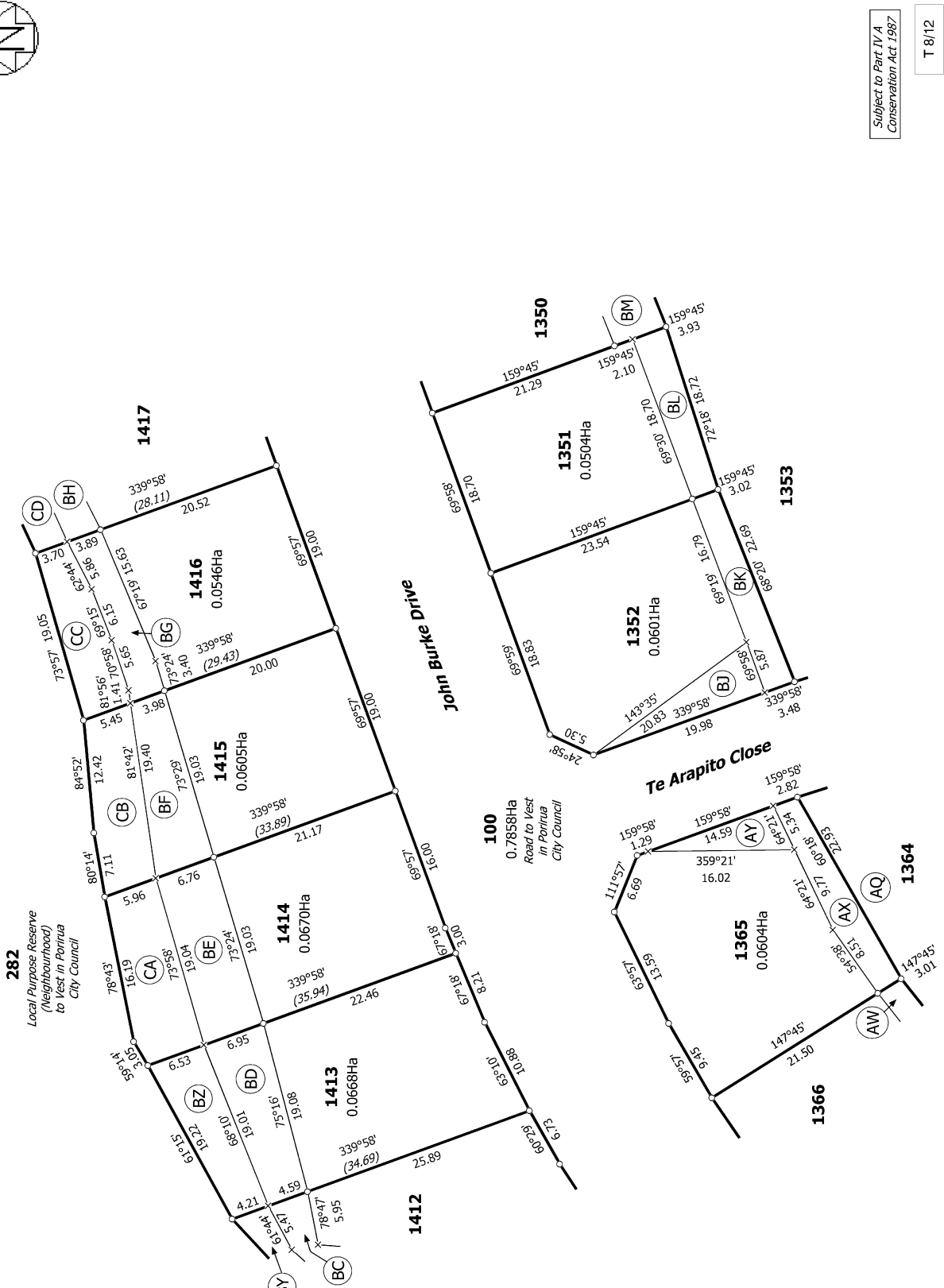
Diag. AC



<p>Land District: Wellington</p> <p>Digitally Generated Plan</p> <p>Generated on: 06/04/2022 2:37pm Page 12 of 18</p>	<p>Lots 1, 100, 282, 284, 1339-1373, 1408 and 1410-1418 being a subdivision of Lot 200 DP 564485 and Lot 273 DP 498135</p>	<p>Surveyor: Rachel Isabella Charlesworth</p> <p>Firm: Cuttriss Consultants Ltd</p>	<p>Title Plan</p> <p>LT 571061</p> <p>Approved on: 6/04/2022</p>
--	--	---	---



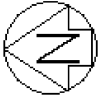
Diag. AG



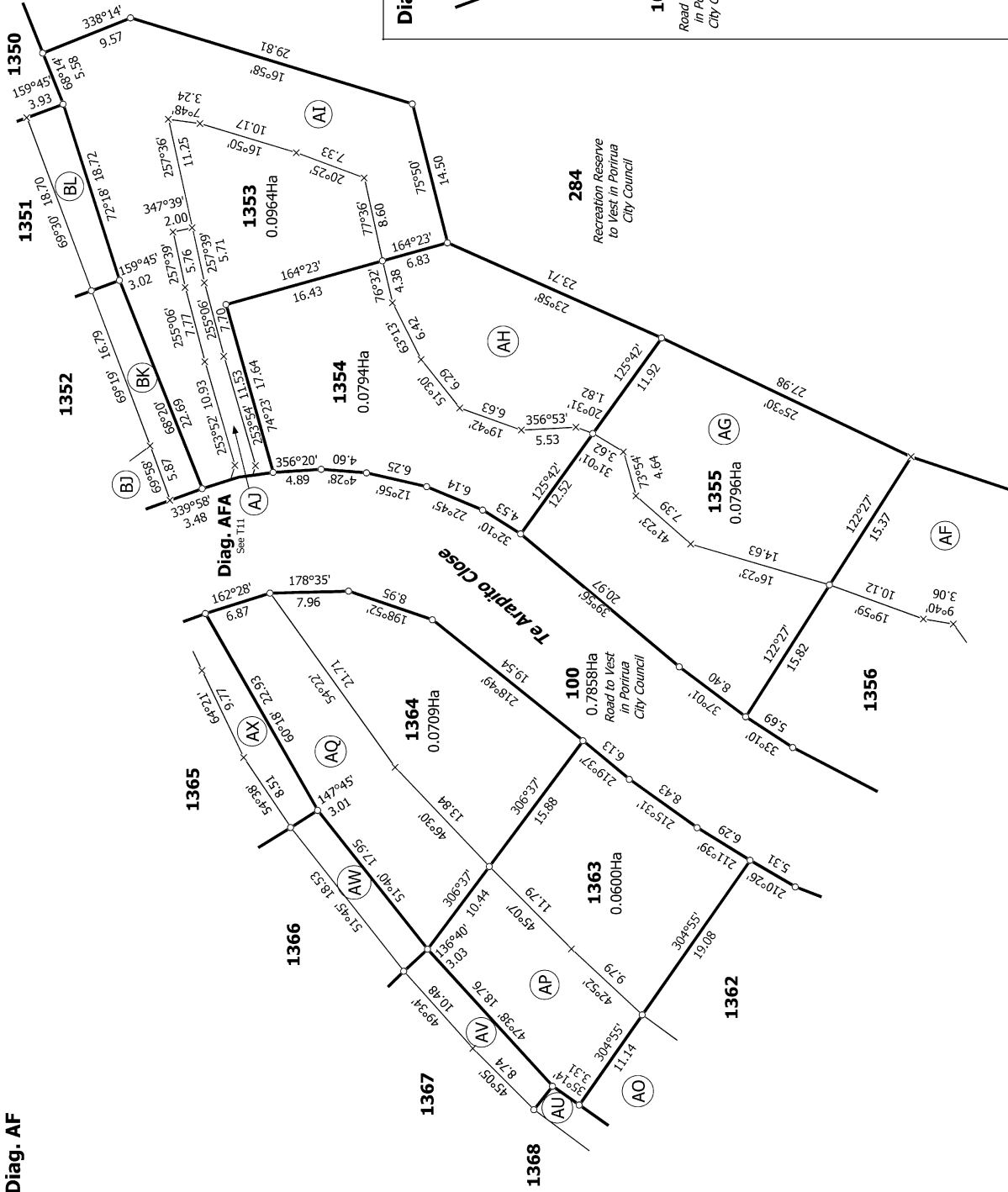
Subject to Part IV A
Conservation Act 1987

T 8/12

<p>Land District: Wellington</p> <p>Digitally Generated Plan Generated on: 06/04/2022 2:37pm Page 14 of 18</p>	<p>Lots 1, 100, 282, 284, 285, 1339-1373, 1408 and 1410-1418 being a subdivision of Lot 200 DP 564485 and Lot 273 DP 498135</p>	<p>Surveyor: Rachel Isabella Charlesworth Firm: Cuttriss Consultants Ltd</p>	<p>Title Plan LT 571061 Approved on: 6/04/2022</p>
---	---	--	--



Diag. AF



Diag. AFA

1352

100

1353

1354

Te Arapito Close

Subject to Part IV A Conservation Act 1987

T 11/12

Land District: Wellington

Digitally Generated Plan

Generated on: 06/04/2022 2:37pm Page 17 of 18

Lots 1, 100, 282, 284, 285, 1339-1373, 1408 and 1410-1418 being a subdivision of Lot 200 DP 564485 and Lot 273 DP 498135

Surveyor: Rachel Isabella Charlesworth
Firm: Cuttriss Consultants Ltd

Title Plan
LT 571061
Approved on: 6/04/2022

