



# Title Plan - LT 530586

---

**Survey Number** LT 530586  
**Surveyor Reference** 27514 Carrus Stage 14  
**Surveyor** Hamlin Boyde-Manson  
**Survey Firm** Cuttriss Consultants Ltd  
**Surveyor Declaration** I Hamlin Boyde-Manson, being a licensed cadastral surveyor, certify that:  
(a) this dataset provided by me and its related survey are accurate, correct and in accordance with the Cadastral Survey Act 2002 and the Rules for Cadastral Survey 2010, and  
(b) the survey was undertaken by me or under my personal direction.  
Declared on 08 Jan 2019 11:24 AM

---

## Survey Details

**Dataset Description** Lots 1-4, 100, 278, 279, 280, 1134-1163 and 1166-1208 being a subdivision of Lot 271 DP 498135  
**Status** Approved as to Survey  
**Land District** Wellington **Survey Class** Class A  
**Submitted Date** 08/01/2019 **Survey Approval Date** 21/01/2019  
**Deposit Date**

---

## Territorial Authorities

Porirua City

---

## Comprised In

RT 752110

---

## Created Parcels

Parcels	Parcel Intent	Area	RT Reference
Lot 1 Deposited Plan 530586	Fee Simple Title	0.4451 Ha	863448
Lot 2 Deposited Plan 530586	Fee Simple Title	0.0778 Ha	Multiple
Lot 3 Deposited Plan 530586	Fee Simple Title	0.0203 Ha	Multiple
Lot 4 Deposited Plan 530586	Fee Simple Title	0.0232 Ha	Multiple
Lot 100 Deposited Plan 530586	Vesting on Deposit for Road	1.5475 Ha	
Lot 278 Deposited Plan 530586	Vesting on Deposit for Recreation Reserve (Territorial Authority)	3.6358 Ha	863449
Lot 279 Deposited Plan 530586	Fee Simple Title	1.1962 Ha	863450
Lot 280 Deposited Plan 530586	Fee Simple Title	3.7775 Ha	863451
Lot 1134 Deposited Plan 530586	Fee Simple Title	0.0870 Ha	863452
Lot 1135 Deposited Plan 530586	Fee Simple Title	0.0743 Ha	863453
Lot 1136 Deposited Plan 530586	Fee Simple Title	0.0749 Ha	863454
Lot 1137 Deposited Plan 530586	Fee Simple Title	0.0814 Ha	863455
Lot 1138 Deposited Plan 530586	Fee Simple Title	0.0925 Ha	863456
Lot 1139 Deposited Plan 530586	Fee Simple Title	0.1203 Ha	863457
Lot 1140 Deposited Plan 530586	Fee Simple Title	0.1414 Ha	863458
Lot 1141 Deposited Plan 530586	Fee Simple Title	0.1484 Ha	863459
Lot 1142 Deposited Plan 530586	Fee Simple Title	0.1713 Ha	863460
Lot 1143 Deposited Plan 530586	Fee Simple Title	0.1540 Ha	863461



# Title Plan - LT 530586

## Created Parcels

Parcels	Parcel Intent	Area	RT Reference
Lot 1144 Deposited Plan 530586	Fee Simple Title	0.1427 Ha	863462
Lot 1145 Deposited Plan 530586	Fee Simple Title	0.0512 Ha	863463
Lot 1146 Deposited Plan 530586	Fee Simple Title	0.0481 Ha	863464
Lot 1147 Deposited Plan 530586	Fee Simple Title	0.0466 Ha	863465
Lot 1148 Deposited Plan 530586	Fee Simple Title	0.0790 Ha	863466
Lot 1149 Deposited Plan 530586	Fee Simple Title	0.0552 Ha	863467
Lot 1150 Deposited Plan 530586	Fee Simple Title	0.0558 Ha	863468
Lot 1151 Deposited Plan 530586	Fee Simple Title	0.0596 Ha	863469
Lot 1152 Deposited Plan 530586	Fee Simple Title	0.0862 Ha	863470
Lot 1153 Deposited Plan 530586	Fee Simple Title	0.1524 Ha	863471
Lot 1154 Deposited Plan 530586	Fee Simple Title	0.0765 Ha	863472
Lot 1155 Deposited Plan 530586	Fee Simple Title	0.0574 Ha	863473
Lot 1156 Deposited Plan 530586	Fee Simple Title	0.0751 Ha	863474
Lot 1157 Deposited Plan 530586	Fee Simple Title	0.0681 Ha	863475
Lot 1158 Deposited Plan 530586	Fee Simple Title	0.0501 Ha	863476
Lot 1159 Deposited Plan 530586	Fee Simple Title	0.0507 Ha	863477
Lot 1160 Deposited Plan 530586	Fee Simple Title	0.0493 Ha	863478
Lot 1161 Deposited Plan 530586	Fee Simple Title	0.0500 Ha	863479
Lot 1162 Deposited Plan 530586	Fee Simple Title	0.0504 Ha	863480
Lot 1163 Deposited Plan 530586	Fee Simple Title	0.0690 Ha	863481
Lot 1166 Deposited Plan 530586	Fee Simple Title	0.0645 Ha	863482
Lot 1167 Deposited Plan 530586	Fee Simple Title	0.0766 Ha	863483
Lot 1168 Deposited Plan 530586	Fee Simple Title	0.0733 Ha	863484
Lot 1169 Deposited Plan 530586	Fee Simple Title	0.0917 Ha	863485
Lot 1170 Deposited Plan 530586	Fee Simple Title	0.0832 Ha	863486
Lot 1171 Deposited Plan 530586	Fee Simple Title	0.0789 Ha	863487
Lot 1172 Deposited Plan 530586	Fee Simple Title	0.0861 Ha	863488
Lot 1173 Deposited Plan 530586	Fee Simple Title	0.0730 Ha	863489
Lot 1174 Deposited Plan 530586	Fee Simple Title	0.0741 Ha	863490
Lot 1175 Deposited Plan 530586	Fee Simple Title	0.0711 Ha	863491
Lot 1176 Deposited Plan 530586	Fee Simple Title	0.0777 Ha	863492
Lot 1177 Deposited Plan 530586	Fee Simple Title	0.0736 Ha	863493
Lot 1178 Deposited Plan 530586	Fee Simple Title	0.1132 Ha	863494
Lot 1179 Deposited Plan 530586	Fee Simple Title	0.0865 Ha	863495
Lot 1180 Deposited Plan 530586	Fee Simple Title	0.0544 Ha	863496
Lot 1181 Deposited Plan 530586	Fee Simple Title	0.0730 Ha	863497
Lot 1182 Deposited Plan 530586	Fee Simple Title	0.0648 Ha	863498
Lot 1183 Deposited Plan 530586	Fee Simple Title	0.0571 Ha	863499
Lot 1184 Deposited Plan 530586	Fee Simple Title	0.0617 Ha	863500
Lot 1185 Deposited Plan 530586	Fee Simple Title	0.0499 Ha	863501
Lot 1186 Deposited Plan 530586	Fee Simple Title	0.0545 Ha	863502
Lot 1187 Deposited Plan 530586	Fee Simple Title	0.0683 Ha	863503
Lot 1188 Deposited Plan 530586	Fee Simple Title	0.0624 Ha	863504
Lot 1189 Deposited Plan 530586	Fee Simple Title	0.0634 Ha	863505



# Title Plan - LT 530586

---

## Created Parcels

Parcels	Parcel Intent	Area	RT Reference
Lot 1190 Deposited Plan 530586	Fee Simple Title	0.0541 Ha	863506
Lot 1191 Deposited Plan 530586	Fee Simple Title	0.0732 Ha	863507
Lot 1192 Deposited Plan 530586	Fee Simple Title	0.0536 Ha	863508
Lot 1193 Deposited Plan 530586	Fee Simple Title	0.0708 Ha	863509
Lot 1194 Deposited Plan 530586	Fee Simple Title	0.0620 Ha	863510
Lot 1195 Deposited Plan 530586	Fee Simple Title	0.0625 Ha	863511
Lot 1196 Deposited Plan 530586	Fee Simple Title	0.0558 Ha	863512
Lot 1197 Deposited Plan 530586	Fee Simple Title	0.0481 Ha	863513
Lot 1198 Deposited Plan 530586	Fee Simple Title	0.0977 Ha	863514
Lot 1199 Deposited Plan 530586	Fee Simple Title	0.0510 Ha	863515
Lot 1200 Deposited Plan 530586	Fee Simple Title	0.0613 Ha	863516
Lot 1201 Deposited Plan 530586	Fee Simple Title	0.0786 Ha	863517
Lot 1202 Deposited Plan 530586	Fee Simple Title	0.0731 Ha	863518
Lot 1203 Deposited Plan 530586	Fee Simple Title	0.0592 Ha	863519
Lot 1204 Deposited Plan 530586	Fee Simple Title	0.0678 Ha	863520
Lot 1205 Deposited Plan 530586	Fee Simple Title	0.0924 Ha	863521
Lot 1206 Deposited Plan 530586	Fee Simple Title	0.0867 Ha	863522
Lot 1207 Deposited Plan 530586	Fee Simple Title	0.0963 Ha	863523
Lot 1208 Deposited Plan 530586	Fee Simple Title	0.1833 Ha	863524
Area A Deposited Plan 530586	Land Covenant		
Area B Deposited Plan 530586	Land Covenant		
Area C Deposited Plan 530586	Land Covenant		
Area D Deposited Plan 530586	Land Covenant		
Area E Deposited Plan 530586	Land Covenant		
Area F Deposited Plan 530586	Land Covenant		
Area G Deposited Plan 530586	Land Covenant		
Area H Deposited Plan 530586	Land Covenant		
Area I Deposited Plan 530586	Land Covenant		
Area J Deposited Plan 530586	Land Covenant		
Area K Deposited Plan 530586	Land Covenant		
Area L Deposited Plan 530586	Land Covenant		
Area M Deposited Plan 530586	Land Covenant		
Area N Deposited Plan 530586	Land Covenant		
Area O Deposited Plan 530586	Land Covenant		
Area P Deposited Plan 530586	Land Covenant		
Area Q Deposited Plan 530586	Land Covenant		
Area R Deposited Plan 530586	Land Covenant		
Area S Deposited Plan 530586	Land Covenant		
Area T Deposited Plan 530586	Land Covenant		
Area U Deposited Plan 530586	Land Covenant		
Area V Deposited Plan 530586	Land Covenant		
Area W Deposited Plan 530586	Land Covenant		
Area X Deposited Plan 530586	Land Covenant		
Area Y Deposited Plan 530586	Land Covenant		



# Title Plan - LT 530586

---

## Created Parcels

Parcels	Parcel Intent	Area	RT Reference
Area Z Deposited Plan 530586	Land Covenant		
Area AA Deposited Plan 530586	Land Covenant		
Area AB Deposited Plan 530586	Land Covenant		
Area AC Deposited Plan 530586	Land Covenant		
Area AD Deposited Plan 530586	Land Covenant		
Area AE Deposited Plan 530586	Land Covenant		
Area AF Deposited Plan 530586	Land Covenant		
Area AG Deposited Plan 530586	Land Covenant		
Area AH Deposited Plan 530586	Land Covenant		
Area AI Deposited Plan 530586	Land Covenant		
Area AJ Deposited Plan 530586	Easement		
Area AK Deposited Plan 530586	Easement		
Area AL Deposited Plan 530586	Land Covenant		
Area AM Deposited Plan 530586	Land Covenant		
Area AN Deposited Plan 530586	Easement		
Area AO Deposited Plan 530586	Land Covenant		
Area AP Deposited Plan 530586	Land Covenant		
Area AQ Deposited Plan 530586	Land Covenant		
Area AR Deposited Plan 530586	Land Covenant		
Area AS Deposited Plan 530586	Land Covenant		
Area AT Deposited Plan 530586	Easement		
Area AU Deposited Plan 530586	Land Covenant		
Area AV Deposited Plan 530586	Land Covenant		
Area AW Deposited Plan 530586	Land Covenant		
Area AX Deposited Plan 530586	Land Covenant		
Area AY Deposited Plan 530586	Land Covenant		
Area AZ Deposited Plan 530586	Land Covenant		
Area BA Deposited Plan 530586	Land Covenant		
Area BB Deposited Plan 530586	Land Covenant		
Area BC Deposited Plan 530586	Land Covenant		
Area BD Deposited Plan 530586	Land Covenant		
Area BE Deposited Plan 530586	Easement		
Area BF Deposited Plan 530586	Land Covenant		
Area BG Deposited Plan 530586	Land Covenant		
Area BH Deposited Plan 530586	Land Covenant		
Area BI Deposited Plan 530586	Land Covenant		
Area BJ Deposited Plan 530586	Land Covenant		
Area BK Deposited Plan 530586	Land Covenant		
Area BL Deposited Plan 530586	Land Covenant		
Area BM Deposited Plan 530586	Land Covenant		
Area BN Deposited Plan 530586	Land Covenant		
Area BO Deposited Plan 530586	Land Covenant		
Area BP Deposited Plan 530586	Land Covenant		
Area BQ Deposited Plan 530586	Land Covenant		



# Title Plan - LT 530586

---

## Created Parcels

Parcels	Parcel Intent	Area	RT Reference
Area BR Deposited Plan 530586	Land Covenant		
Area BS Deposited Plan 530586	Land Covenant		
Area BT Deposited Plan 530586	Land Covenant		
Area BU Deposited Plan 530586	Land Covenant		
Area BV Deposited Plan 530586	Land Covenant		
Area BW Deposited Plan 530586	Land Covenant		
Area BX Deposited Plan 530586	Land Covenant		
Area BY Deposited Plan 530586	Land Covenant		
Area BZ Deposited Plan 530586	Land Covenant		
Area CA Deposited Plan 530586	Land Covenant		
Area CB Deposited Plan 530586	Land Covenant		
Area CC Deposited Plan 530586	Land Covenant		
Area CD Deposited Plan 530586	Land Covenant		
Area CE Deposited Plan 530586	Land Covenant		
Area CF Deposited Plan 530586	Land Covenant		
Area CG Deposited Plan 530586	Land Covenant		
Area CH Deposited Plan 530586	Land Covenant		
Area CI Deposited Plan 530586	Land Covenant		
Area CJ Deposited Plan 530586	Land Covenant		
Area CK Deposited Plan 530586	Land Covenant		
Area CL Deposited Plan 530586	Land Covenant		
Area CM Deposited Plan 530586	Land Covenant		
Area CN Deposited Plan 530586	Land Covenant		
Area CO Deposited Plan 530586	Land Covenant		
Area CP Deposited Plan 530586	Land Covenant		
Area CQ Deposited Plan 530586	Land Covenant		
Area CR Deposited Plan 530586	Land Covenant		
Area CS Deposited Plan 530586	Land Covenant		
Area CT Deposited Plan 530586	Land Covenant		
Area CU Deposited Plan 530586	Land Covenant		
Area CV Deposited Plan 530586	Easement		
Area CW Deposited Plan 530586	Easement		
Area CX Deposited Plan 530586	Land Covenant		
Area CY Deposited Plan 530586	Easement		
Area CZ Deposited Plan 530586	Easement		
Area DA Deposited Plan 530586	Land Covenant		
Area DB Deposited Plan 530586	Easement		
Area DC Deposited Plan 530586	Easement		
Area DD Deposited Plan 530586	Easement		
Area DE Deposited Plan 530586	Land Covenant		
Area DF Deposited Plan 530586	Easement		
Area DG Deposited Plan 530586	Land Covenant		
Area DH Deposited Plan 530586	Land Covenant		
Area DI Deposited Plan 530586	Easement		



# Title Plan - LT 530586

---

## Created Parcels

Parcels	Parcel Intent	Area	RT Reference
Area DJ Deposited Plan 530586	Easement		
Area DK Deposited Plan 530586	Easement		
Area DL Deposited Plan 530586	Land Covenant		
Area DM Deposited Plan 530586	Land Covenant		
Area DN Deposited Plan 530586	Land Covenant		
Area DO Deposited Plan 530586	Land Covenant		
Area DP Deposited Plan 530586	Land Covenant		
Area DQ Deposited Plan 530586	Land Covenant		
Area DR Deposited Plan 530586	Land Covenant		
Area DS Deposited Plan 530586	Land Covenant		
Area DT Deposited Plan 530586	Land Covenant		
Area DU Deposited Plan 530586	Land Covenant		
Area DV Deposited Plan 530586	Easement		
Area DW Deposited Plan 530586	Easement		
Area DX Deposited Plan 530586	Easement		
Area DY Deposited Plan 530586	Land Covenant		
Area DZ Deposited Plan 530586	Land Covenant		
Area EA Deposited Plan 530586	Land Covenant		
Area EB Deposited Plan 530586	Easement		
Area EC Deposited Plan 530586	Easement		
Area ED Deposited Plan 530586	Land Covenant		
<b>Total Area</b>		<hr/> 16.4028 Ha	

## Schedule / Memorandum

Memorandum of Easements in Gross (Pursuant to s243 Resource Management Act 1991)			
Purpose	Shown	Servient Tenement (Burdened Land)	Grantee
Right to drain sewage and water, right to convey water	Lot 2	Lot 2	Porirua City Council
	Lot 3	Lot 3	
	Lot 4	Lot 4	
Right to drain sewage and water	CY, CZ, DB, DC, DD	Lot 1198	
	DJ, DK	Lot 1201	
Right to drain water	AN	Lot 1149	
	CV, CW	Lot 1197	
Right to drain sewage	AJ, AK	Lot 1147	
	BE	Lot 1163	
	DV, DW, DX	Lot 1207	
Right of way, right to drain water, right to convey water	Lot 279	Lot 279	

Memorandum of Easements in Gross (Pursuant to s243 Resource Management Act 1991)			
Purpose	Shown	Servient Tenement (Burdened Land)	Grantee
Right to convey telecommunications	Lot 2	Lot 2	Chorus New Zealand Limited
	Lot 3	Lot 3	
	Lot 4	Lot 4	
Right to convey electricity and telecommunications	Lot 2	Lot 2	Wellington Electricity Lines Limited
	Lot 3	Lot 3	
	Lot 4	Lot 4	
Right to convey gas	Lot 2	Lot 2	Powerco Limited
	Lot 3	Lot 3	
	Lot 4	Lot 4	

## Schedule / Memorandum

Memorandum of Easements (Pursuant to s243 Resource Management Act 1991)			
Purpose	Shown	Servient Tenement (Burdened Land)	Dominant Tenement (Benefited Land)
Right of way, right to drain sewage and water, right to convey water, electricity, gas and telecommunications	Lot 2	Lot 2	Lots 1146-1155
	Lot 3	Lot 3	Lots 1187-1189
	Lot 4	Lot 4	Lots 1201-1203
Right to drain sewage and water, right to convey water, electricity, gas and telecommunications	Lot 2	Lot 2	Lots 1156
Right to drain sewage and water	EC	Lot 278	Lot 1178, Lot 1179
	DF	Lot 1198	Lot 1199
	DI	Lot 1201	Lot 1200
	Lot 2	Lot 2	Lot 1145
	Lot 4	Lot 4	Lot 1204
Right to drain water	EB	Lot 279	Lot 1148
	AT	Lot 1154	Lot 1162

Schedule of Easements to be Surrendered			
Purpose	Shown	Grantee	Specified in
Right to convey water (in gross)	ZF & ZG on DP 498135	Porirua City Council	B686066.3
	DT on DP 498135	Wellington Regional Council	8736497.31
Right of way (in gross)	RB on DP 498135	Porirua City Council	8736497.33
Right to drain sewage and water (in gross)	DT & DU on DP 498135		
Right to convey water (in gross)	DT on DP 498135		



**Amalgamation Conditions**

That pursuant to section 220(1)(b)(iv) of the Resource Management Act 1991, Lot 2 hereon (legal access) be held as to ten undivided one-tenth shares by the owners of Lots 1146, 1147, 1148, 1149, 1150, 1151, 1152, 1153, 1154 & 1155 hereon as tenants in common in the said shares and that individual Computer Freehold Registers be issued in accordance therewith (Request 1385266).

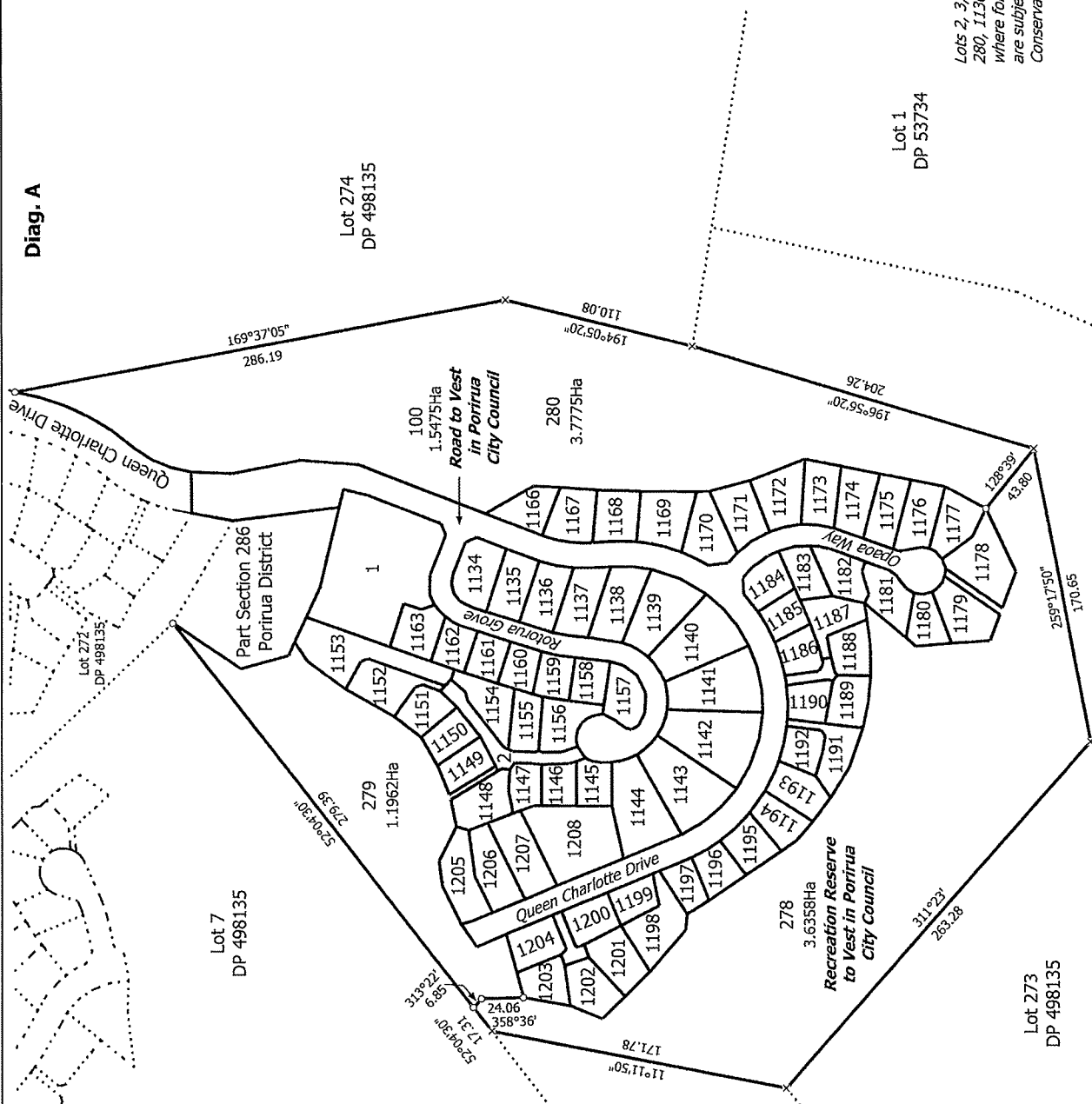
That pursuant to section 220(1)(b)(iv) of the Resource Management Act 1991, Lot 3 hereon (legal access) be held as to three undivided one-third shares by the owners of Lots 1187, 1188 & 1189 hereon as tenants in common in the said shares and that individual Computer Freehold Registers be issued in accordance therewith (Request 1385266).

That pursuant to section 220(1)(b)(iv) of the Resource Management Act 1991, Lot 4 hereon (legal access) be held as to three undivided one-third shares by the owners of Lots 1201, 1202 & 1203 hereon as tenants in common in the said shares and that individual Computer Freehold Registers be issued in accordance therewith (Request 1385266).

Areas A-Z, AA-AJ, AL, AM, AO-AZ, BA-BD, BF-BZ, CA-CV, CX, CY, DA, DB, DD-DJ, DL-DU, DW-DZ, EA, ED are to be subject to consent notices.



**Diag. A**



Lot 2, 3, 4, 100, 278, 279,  
280, 1136-1162, 1169-1208  
where formerly Lot 1 DP 85351  
are subject to Part 4A  
Conservation Act 1987

T 1/21

**Diagram Reference List**

Diag. AL Lot 1 See T2	Diag. AQ Lots 1166-1168 See T12
Diag. AP Lots 1134-1136 See T3	Diag. AS Lots 1169-1171 See T13
Diag. AN Lots 1137-1139 See T4	Diag. AR Lots 1172-1174 & 1182-1184 See T14
Diag. AG Lots 1140-1143 See T5	Diag. AO Lots 1175-1181 See T15
Diag. AF Lots 1144 & 1145 See T6	Diag. AK Lots 3 & 1185-1190 See T16
Diag. AH Lots 2, 1146-1149 & 1154-1156 See T7	Diag. AD Lots 1191-1196 See T17
Diag. AI Lots 1150-1152 See T8	Diag. AB Lots 1197-1199 See T18
Diag. ALA Lots 1153 & 1163 See T9	Diag. AA Lots 4 & 1200-1204 See T19
Diag. AJ Lots 1157-1159 See T10	Diag. AC Lots 1205 & 1206 See T20
Diag. AM Lots 1160-1162 See T11	Diag. AE Lots 1207 & 1208 See T21

Land District: Wellington

Digitally Generated Plan  
Generated on: 21/01/2019 1:03pm Page 10 of 30

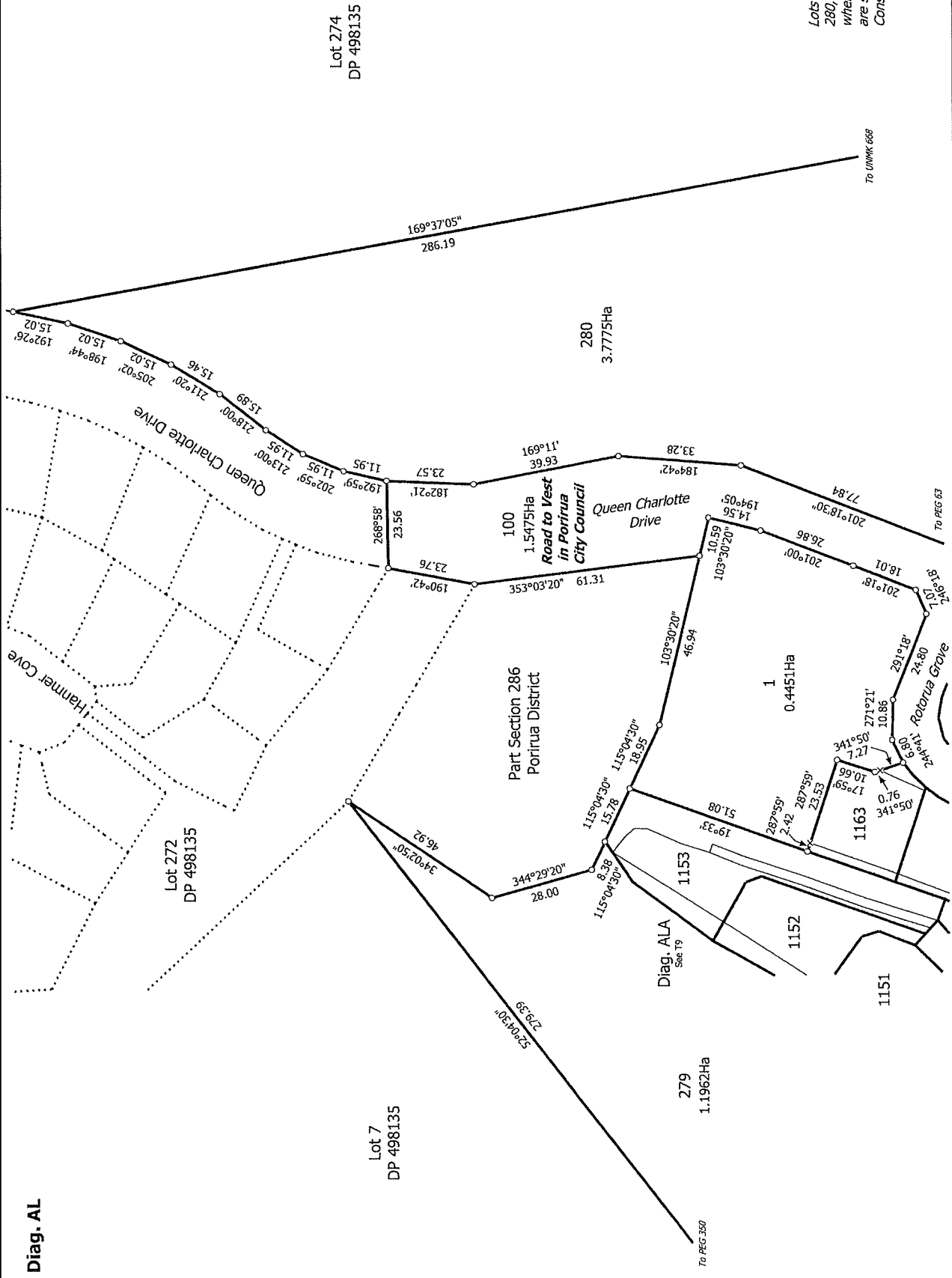
Surveyor: Hamlin Boyle-Manson  
Firm: Cuttriss Consultants Ltd

Lot 1-4, 100, 278, 279, 280, 1134-1163 and 1166-1208 being a subdivision of  
Lot 271 DP 498135

Title Plan  
LT 530586  
Approved on: 21/01/2019



Diag. AL



T 2/21

Land District: Wellington

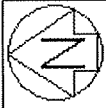
Digitally Generated Plan

Generated on: 21/01/2019 1:03pm Page 11 of 30

Lots 1-4, 100, 278, 279, 280, 1134-1163 and 1166-1208 being a subdivision of Lot 271 DP 498135

Surveyor: Hamlin Boyde-Manson  
Firm: Cuttriss Consultants Ltd

Title Plan  
LT 530586  
Approved on: 21/01/2019



Diag. AP

1162

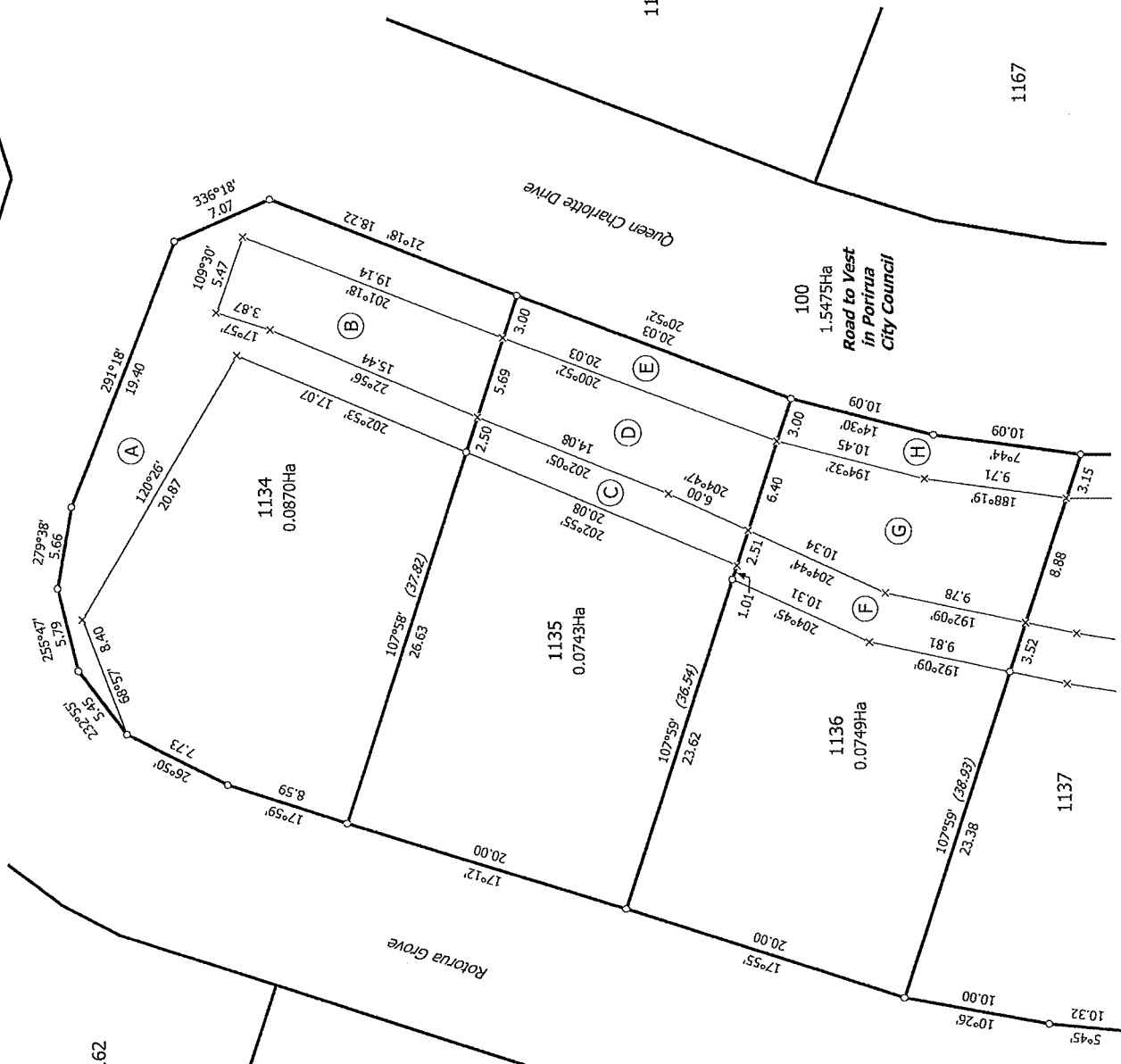
1161

1160

1166

1167

1137



Lots 2, 3, 4, 100, 278, 279,  
280, 1136-1162, 1169-1208  
where formerly Lot 1 DP 85351  
are subject to Part 4A  
Conservation Act 1987

T 3/21

Land District: Wellington

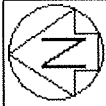
Lots 1-4, 100, 278, 279, 280, 1134-1163 and 1166-1208 being a subdivision of  
Lot 271 DP 498135

Surveyor: Hamlin Boyde-Manson  
Firm: Cuttriss Consultants Ltd

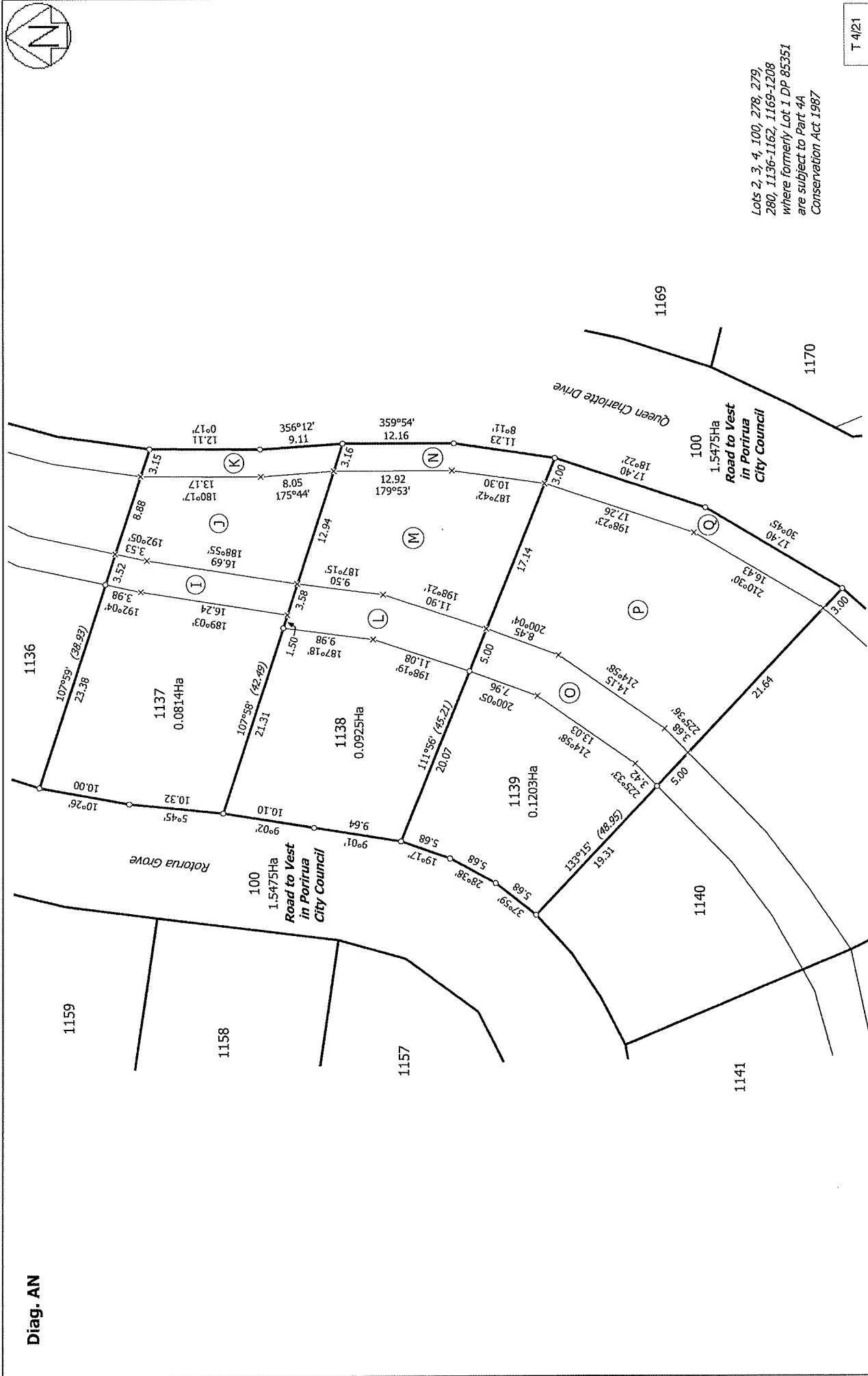
Title Plan  
LT 530586  
Approved on: 21/01/2019

Digitally Generated Plan

Generated on: 21/01/2019 1:03pm Page 12 of 30



Diag. AN



Lots 2, 3, 4, 100, 278, 279,  
280, 1136-1162, 1169-1208  
where formerly Lot 1 DP 85351  
are subject to Part 4A  
Conservation Act 1987

T 4/21

Land District: Wellington

Lots 1-4, 100, 278, 279, 280, 1134-1163 and 1166-1208 being a subdivision of  
Lot 271 DP 498135

Surveyor: Hamlin Boyle-Manson  
Firm: Cuttriss Consultants Ltd

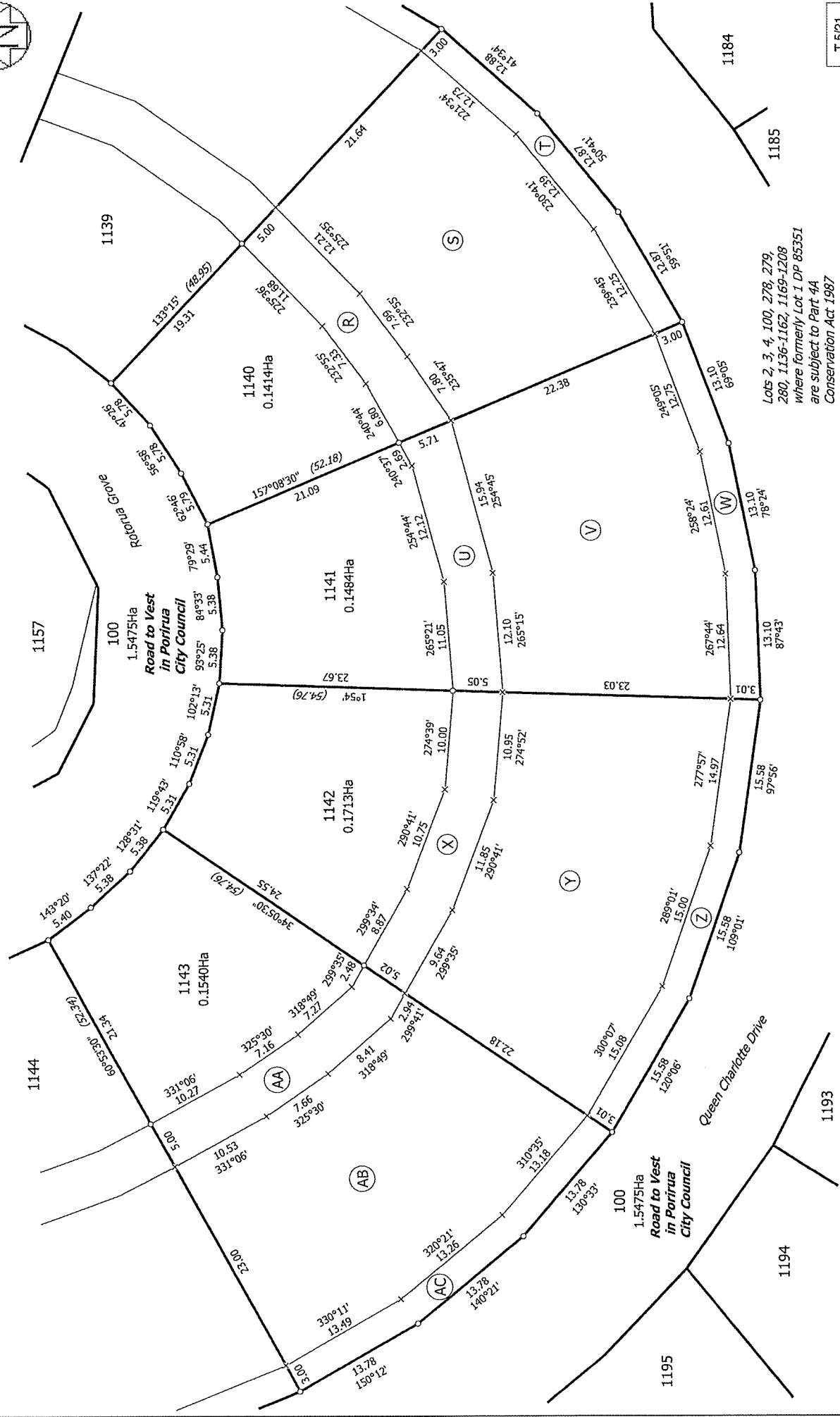
Title Plan  
LT 530586  
Approved on: 21/01/2019

Digitally Generated Plan

Generated on: 21/01/2019 1:03pm Page 13 of 30



Diag. AG



T 5/21

Land District: Wellington  
 Digitally Generated Plan  
 Generated on: 21/01/2019 1:03pm Page 14 of 30

Lots 1-4, 100, 278, 279, 280, 1134-1163 and 1166-1208 being a subdivision of Lot 271 DP 498135

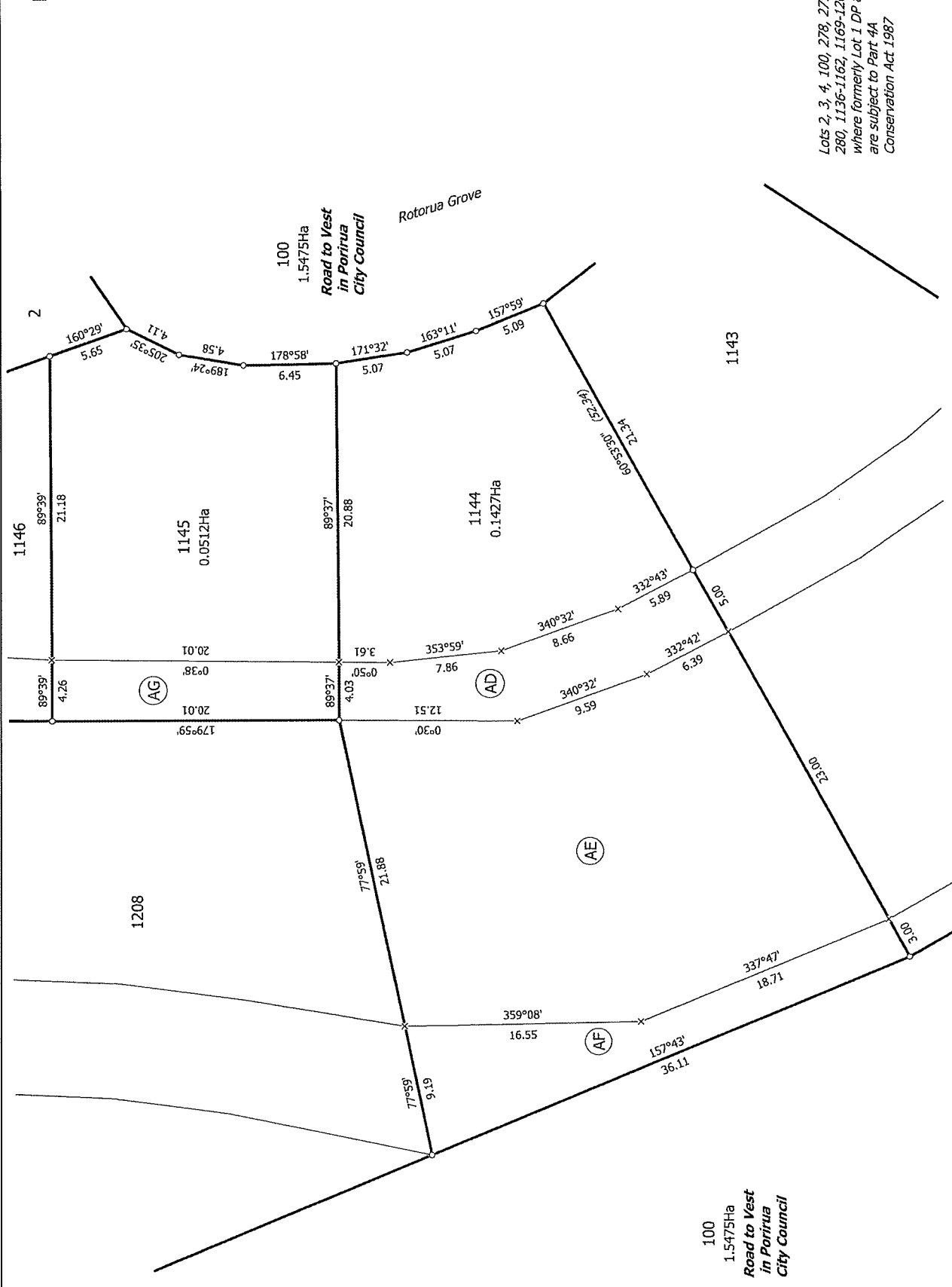
Surveyor: Hamlin Boyde-Manson  
 Firm: Cuttriss Consultants Ltd

Title Plan  
 LT 530586  
 Approved on: 21/01/2019

Lots 2, 3, 4, 100, 278, 279,  
 280, 1136-1162, 1169-1208  
 where formerly Lot 1 DP 85351  
 are subject to Part 4A  
 Conservation Act 1987



Diag. AF



Lots 2, 3, 4, 100, 278, 279, 280, 1136-1162, 1169-1208 where formerly Lot 1 DP 85351 are subject to Part 4A Conservation Act 1987

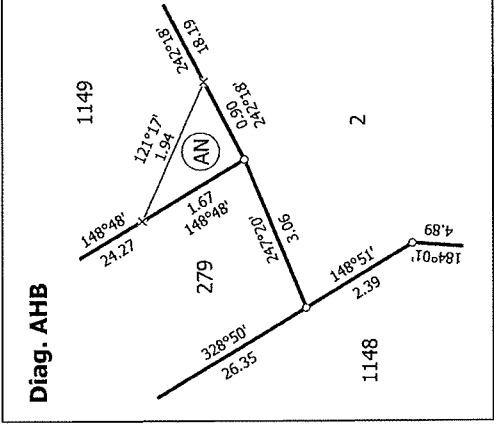
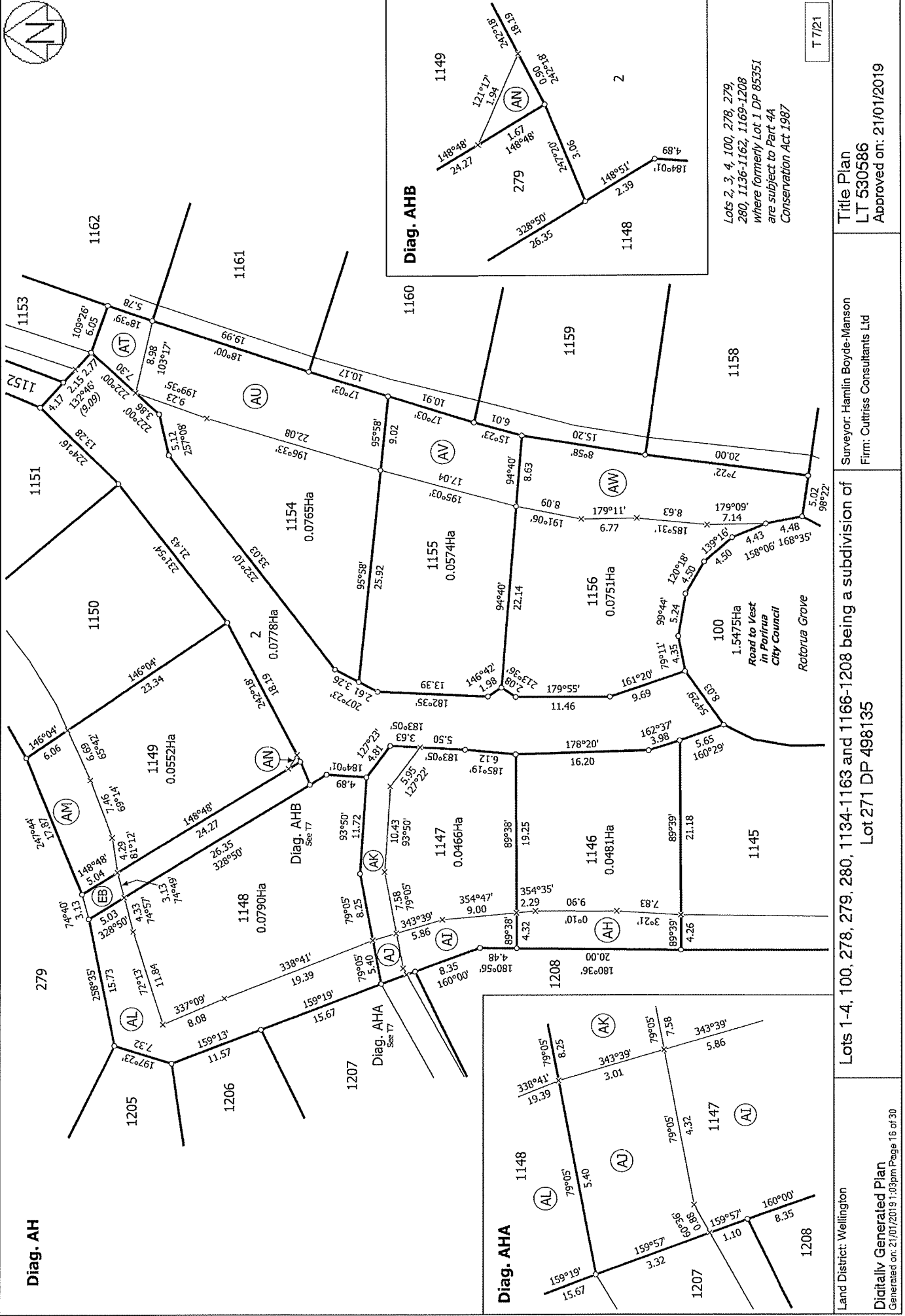
T 6/21

Title Plan  
LT 530586  
Approved on: 21/01/2019

Surveyor: Hamlin Boyde-Manson  
Firm: Cuttriss Consultants Ltd

Lots 1-4, 100, 278, 279, 280, 1134-1163 and 1166-1208 being a subdivision of Lot 271 DP 498135

Land District: Wellington  
Digitally Generated Plan  
Generated on: 21/01/2019 1:03pm Page 15 of 30



Lots 2, 3, 4, 100, 278, 279, 280, 1136-1162, 1169-1208 where formerly Lot 1 DP 85351 are subject to Part 4A Conservation Act 1987

T 7/21

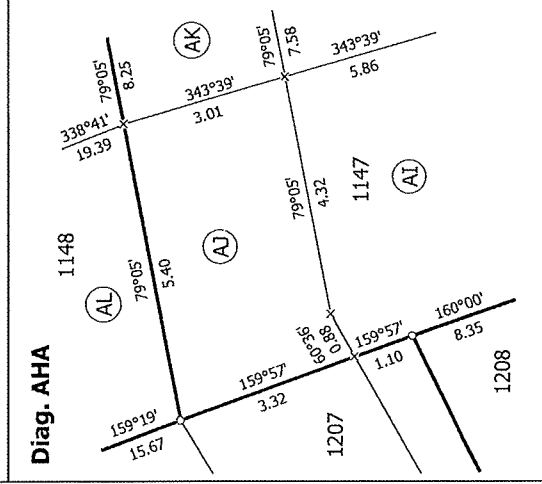
Title Plan  
LT 530586  
Approved on: 21/01/2019

Surveyor: Hamlin Boyle-Manson  
Firm: Cuttriss Consultants Ltd

Lots 1-4, 100, 278, 279, 280, 1134-1163 and 1166-1208 being a subdivision of Lot 271 DP 498135

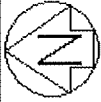
Land District: Wellington

Digitally Generated Plan  
Generated on: 21/01/2019 1:03pm Page 16 of 30



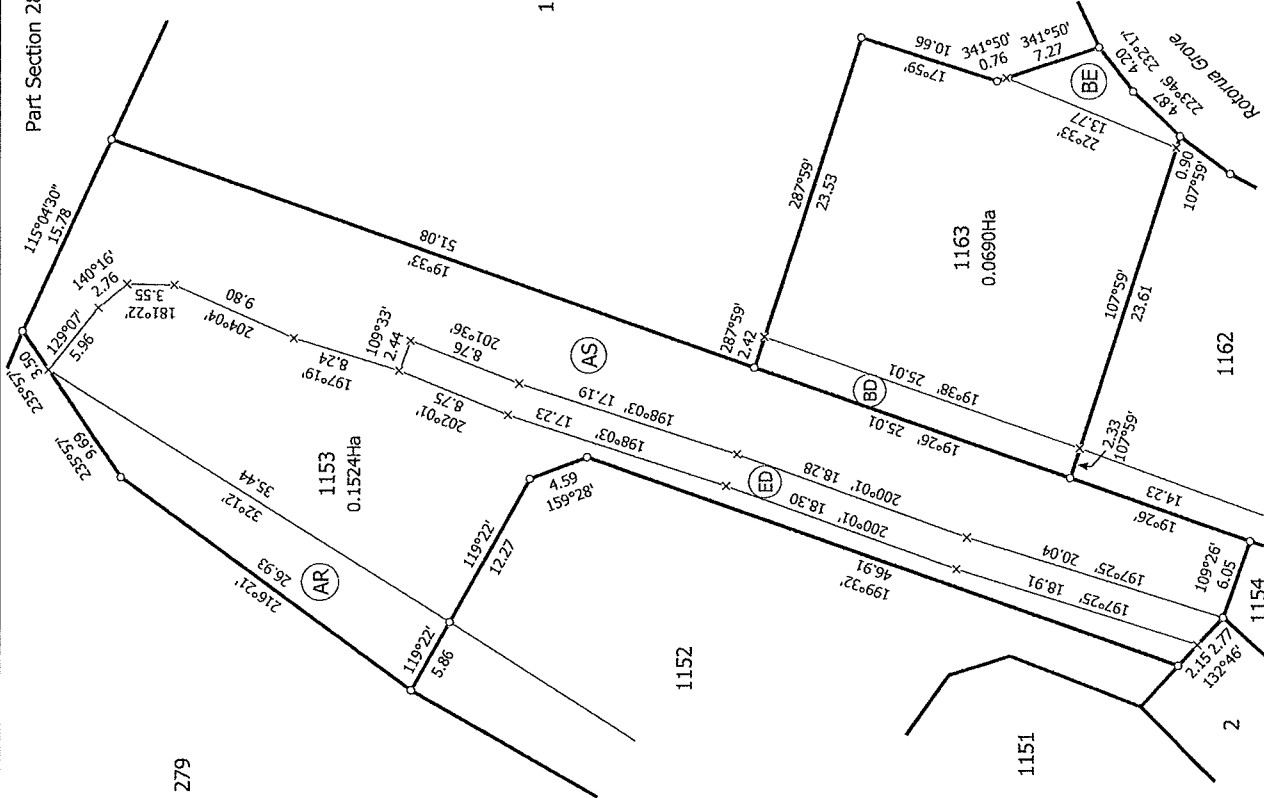






Diag. ALA

Part Section 286 Porirua District



Lots 2, 3, 4, 100, 278, 279,  
280, 1136-1162, 1169-1208  
where formerly Lot 1 DP 85351  
are subject to Part 4A  
Conservation Act 1987

T 9/21

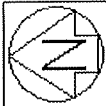
Land District: Wellington

Lots 1-4, 100, 278, 279, 280, 1134-1163 and 1166-1208 being a subdivision of  
Lot 271 DP 498135

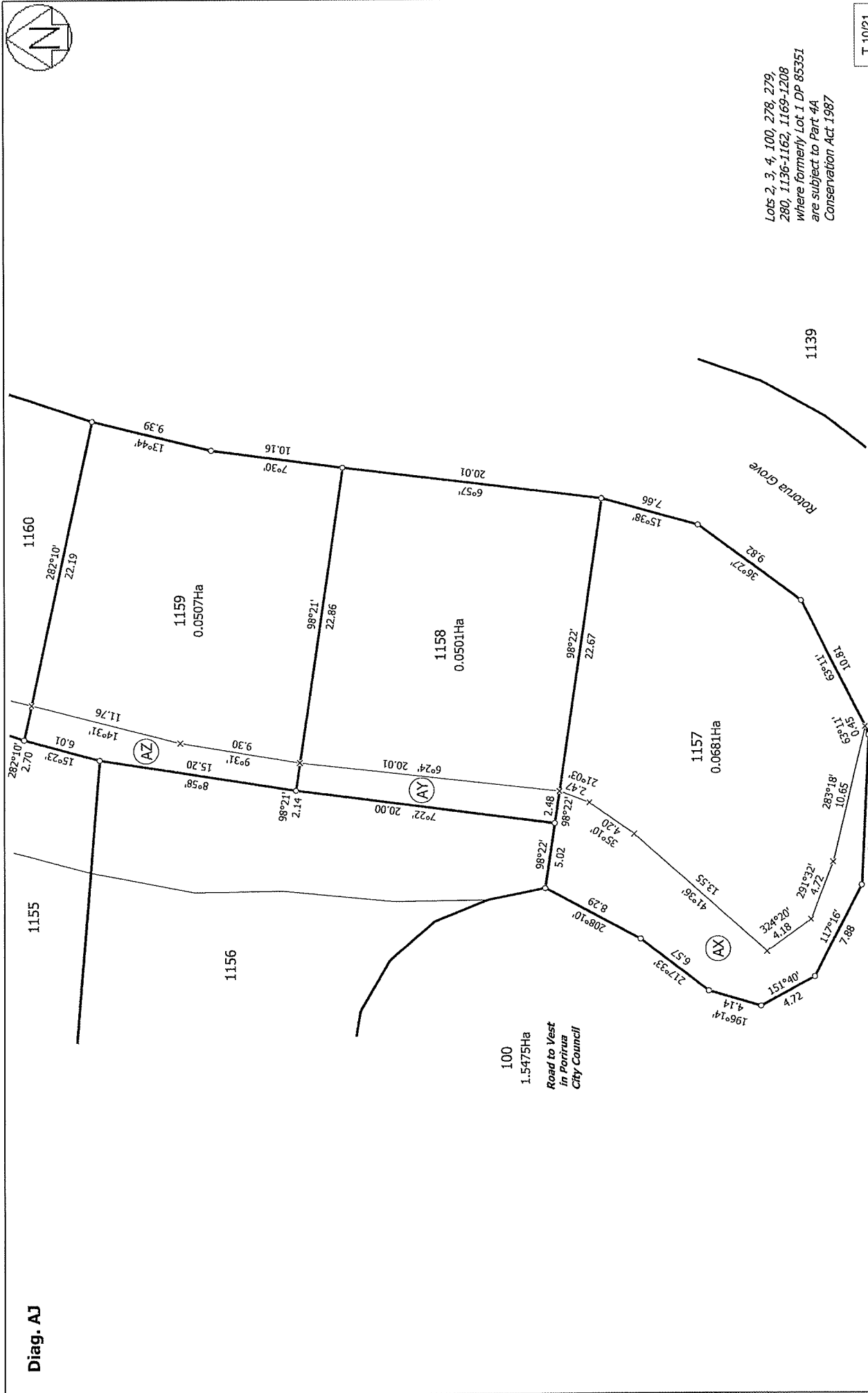
Surveyor: Hamlin Boyle-Manson  
Firm: Cuttriss Consultants Ltd

Title Plan  
LT 530586  
Approved on: 21/01/2019

Digitally Generated Plan  
Generated on: 21/01/2019 1:03pm Page 18 of 30



Diag. AJ



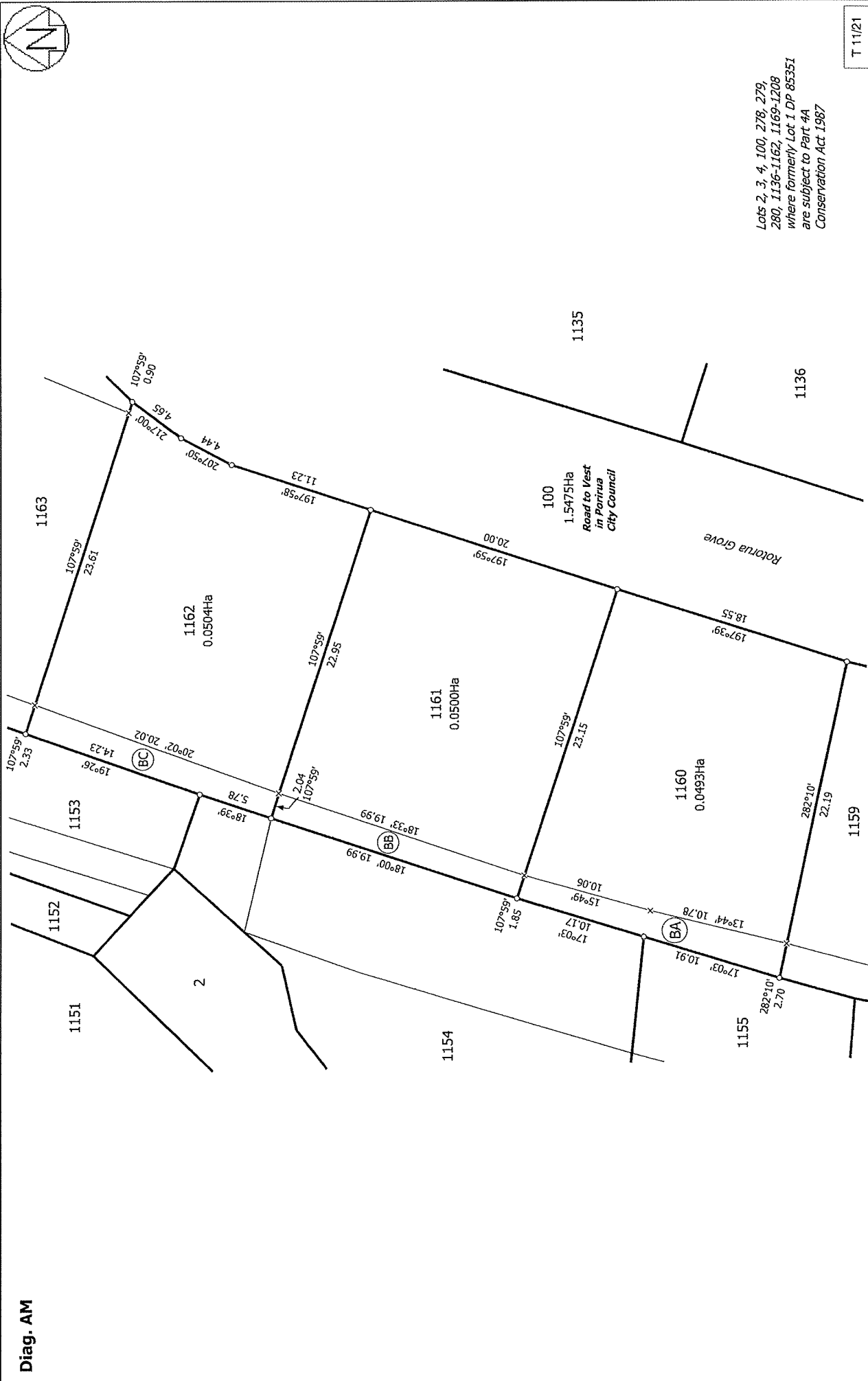
Lots 2, 3, 4, 100, 278, 279,  
280, 1136-1162, 1169-1208  
where formerly Lot 1 DP 85351  
are subject to Part 4A  
Conservation Act 1987

T 10/21

<p>Land District: Wellington</p> <p>Digitally Generated Plan Generated on: 21/01/2019 1:03pm Page 19 of 30</p>	<p>Lots 1-4, 100, 278, 279, 280, 1134-1163 and 1166-1208 being a subdivision of Lot 271 DP 498135</p>	<p>Surveyor: Hamlin Boyde-Manson Firm: Cuttriss Consultants Ltd</p>	<p>Title Plan LT 530586 Approved on: 21/01/2019</p>
--	---	---	---



Diag. AM



T 11/21

Land District: Wellington

Lots 1-4, 100, 278, 279, 280, 1134-1163 and 1166-1208 being a subdivision of Lot 271 DP 498135

Surveyor: Hamlin Boyde-Manson  
Firm: Cuttriss Consultants Ltd

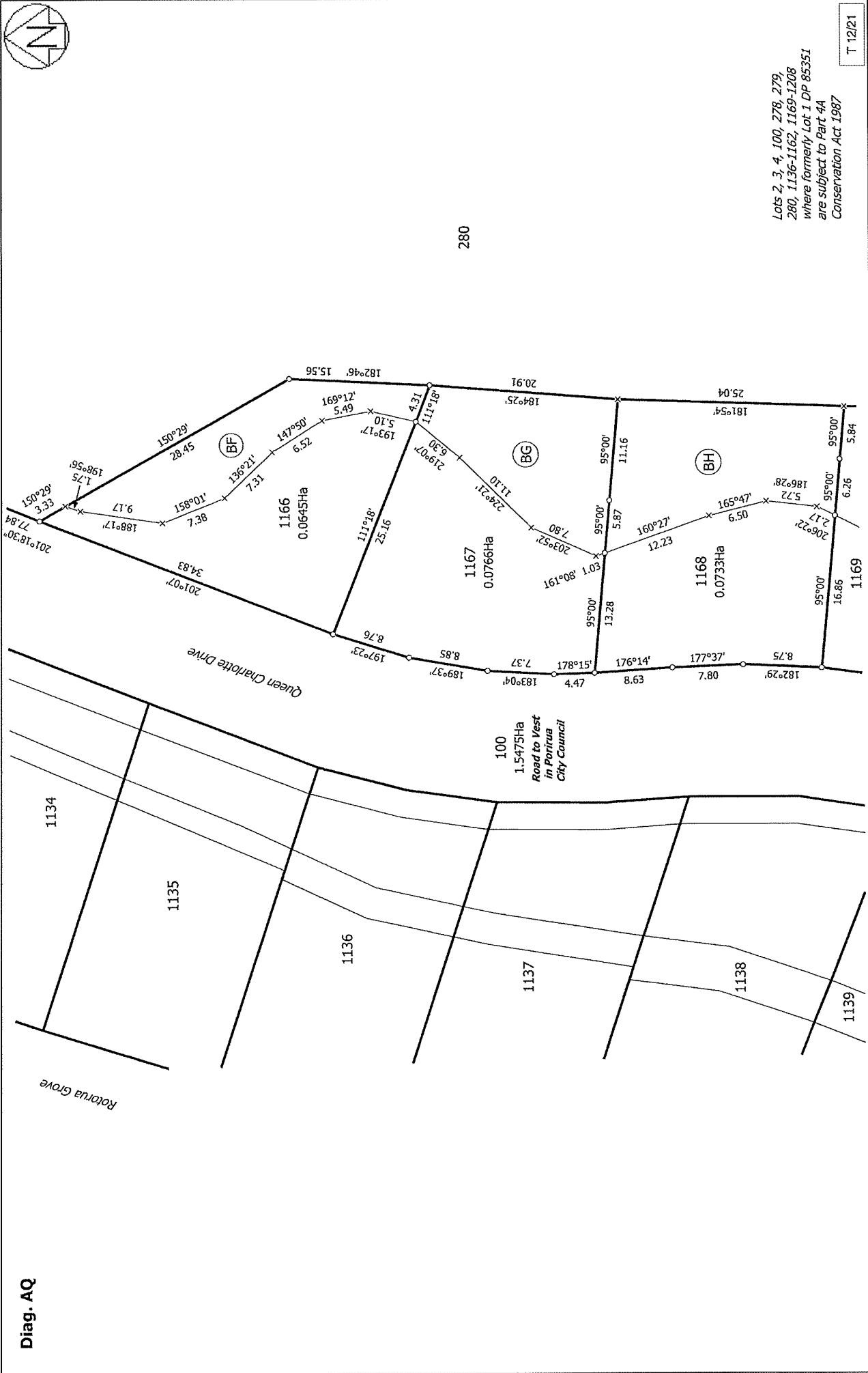
Title Plan  
LT 530586  
Approved on: 21/01/2019

Digitally Generated Plan

Generated on: 21/01/2019 1:03pm Page 20 of 30



Diag. AQ



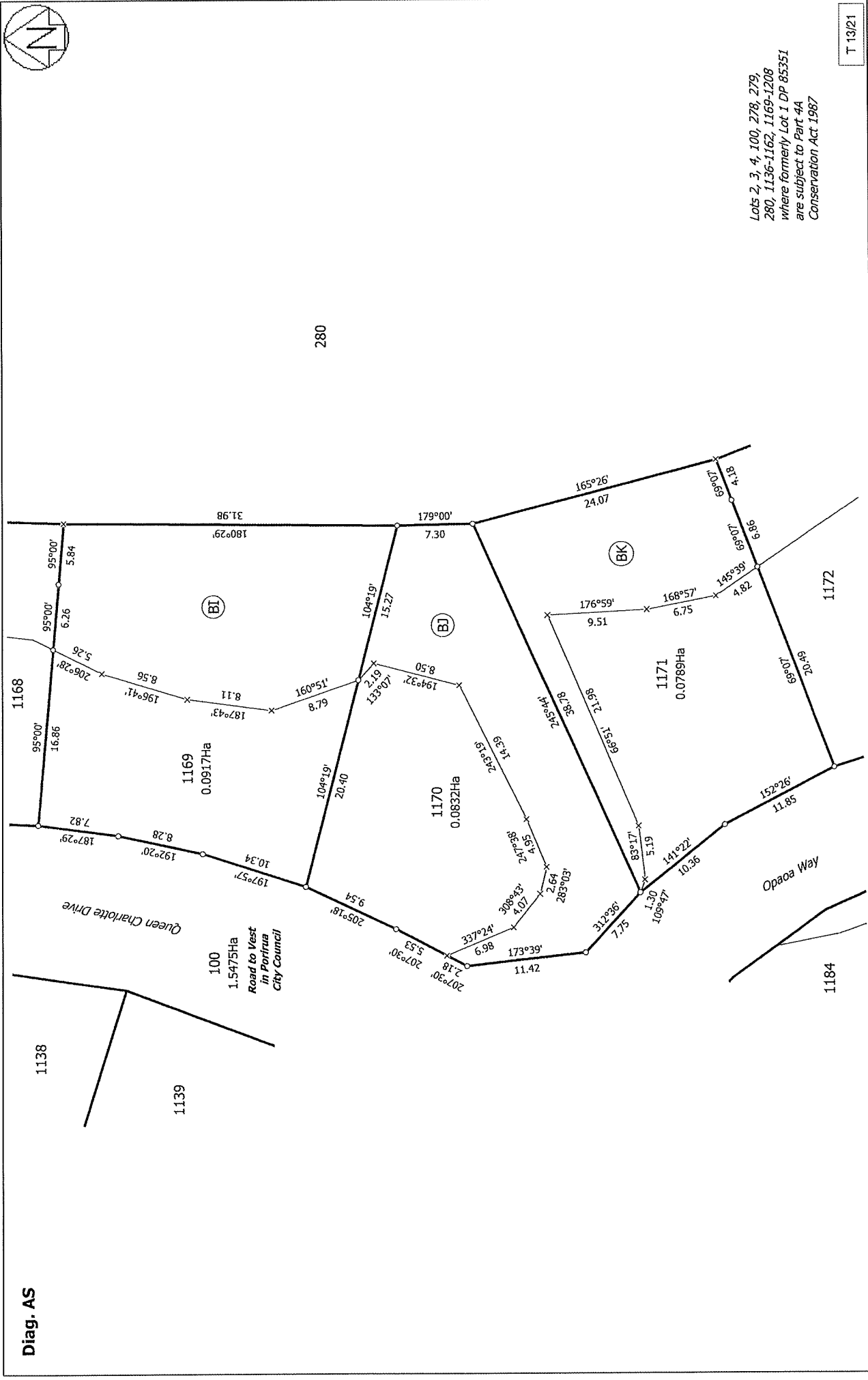
Lots 2, 3, 4, 100, 278, 279,  
280, 1136-1162, 1169-1208  
where formerly Lot 1 DP 85351  
are subject to Part 4A  
Conservation Act 1987

T 12/21

<p>Land District: Wellington</p> <p>Digitally Generated Plan</p> <p>Generated on: 21/01/2019 1:03pm Page 21 of 30</p>	<p>Lots 1-4, 100, 278, 279, 280, 1134-1163 and 1166-1208 being a subdivision of Lot 271 DP 498135</p> <p>Surveyor: Hamlin Boyde-Manson</p> <p>Firm: Cuttriss Consultants Ltd</p>	<p>Title Plan</p> <p>LT 530586</p> <p>Approved on: 21/01/2019</p>
---	--	---



Diag. AS



Lots 2, 3, 4, 100, 278, 279,  
280, 1136-1162, 1169-1208  
where formerly Lot 1 DP 85351  
are subject to Part 4A  
Conservation Act 1987

T 13/21

Land District: Wellington

Lots 1-4, 100, 278, 279, 280, 1134-1163 and 1166-1208 being a subdivision of  
Lot 271 DP 498135

Surveyor: Hamlin Boyde-Manson  
Firm: Cuttriss Consultants Ltd

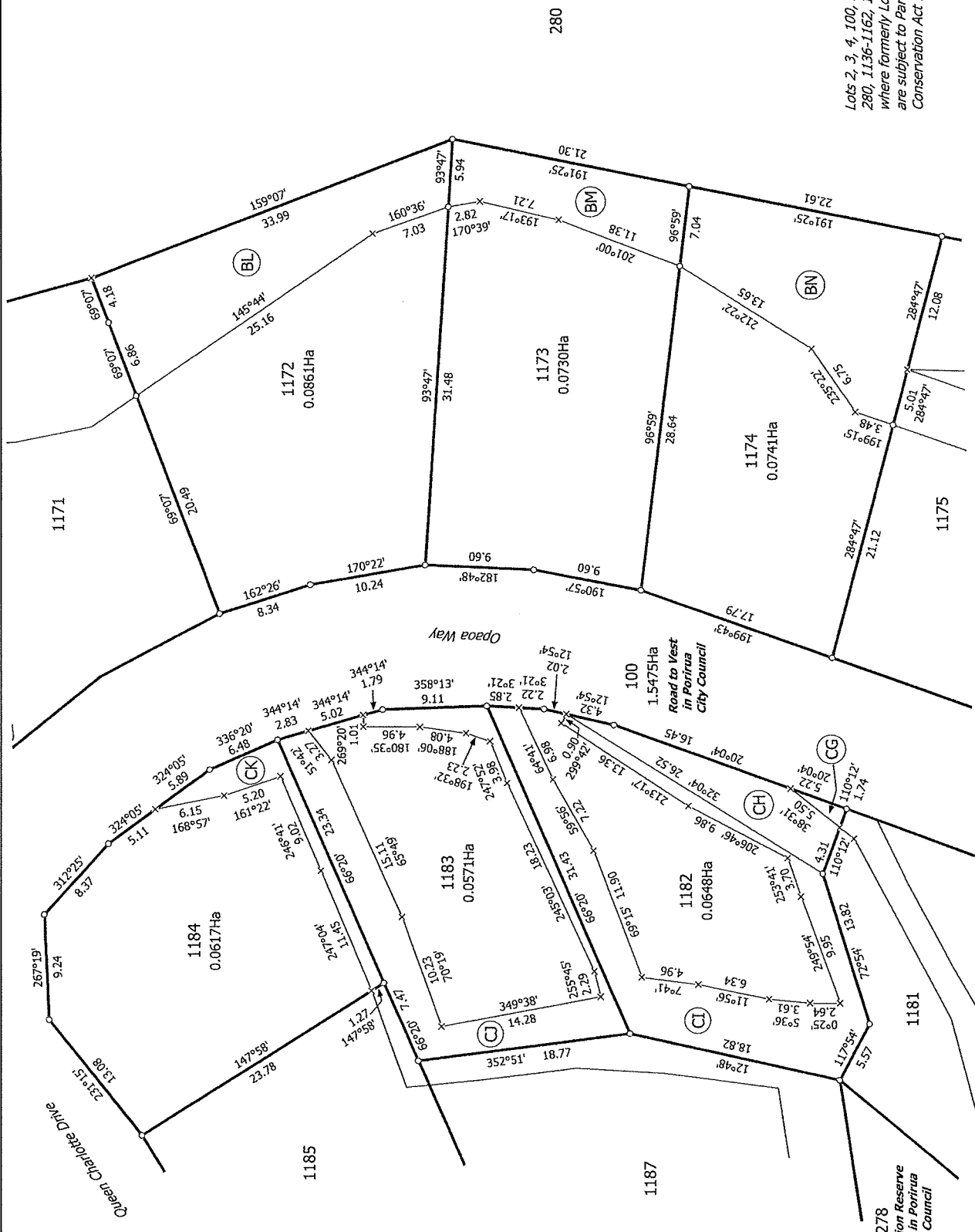
Title Plan  
LT 530586  
Approved on: 21/01/2019

Digitally Generated Plan

Generated on: 21/01/2019 1:03pm Page 22 of 30



Diag. AR



Lots 2, 3, 4, 100, 278, 279, 280, 1136-1162, 1169-1208 where formerly Lot 1 DP 85351 are subject to Part 4A Conservation Act 1987

T 14/21

Title Plan  
 LT 530586  
 Approved on: 21/01/2019

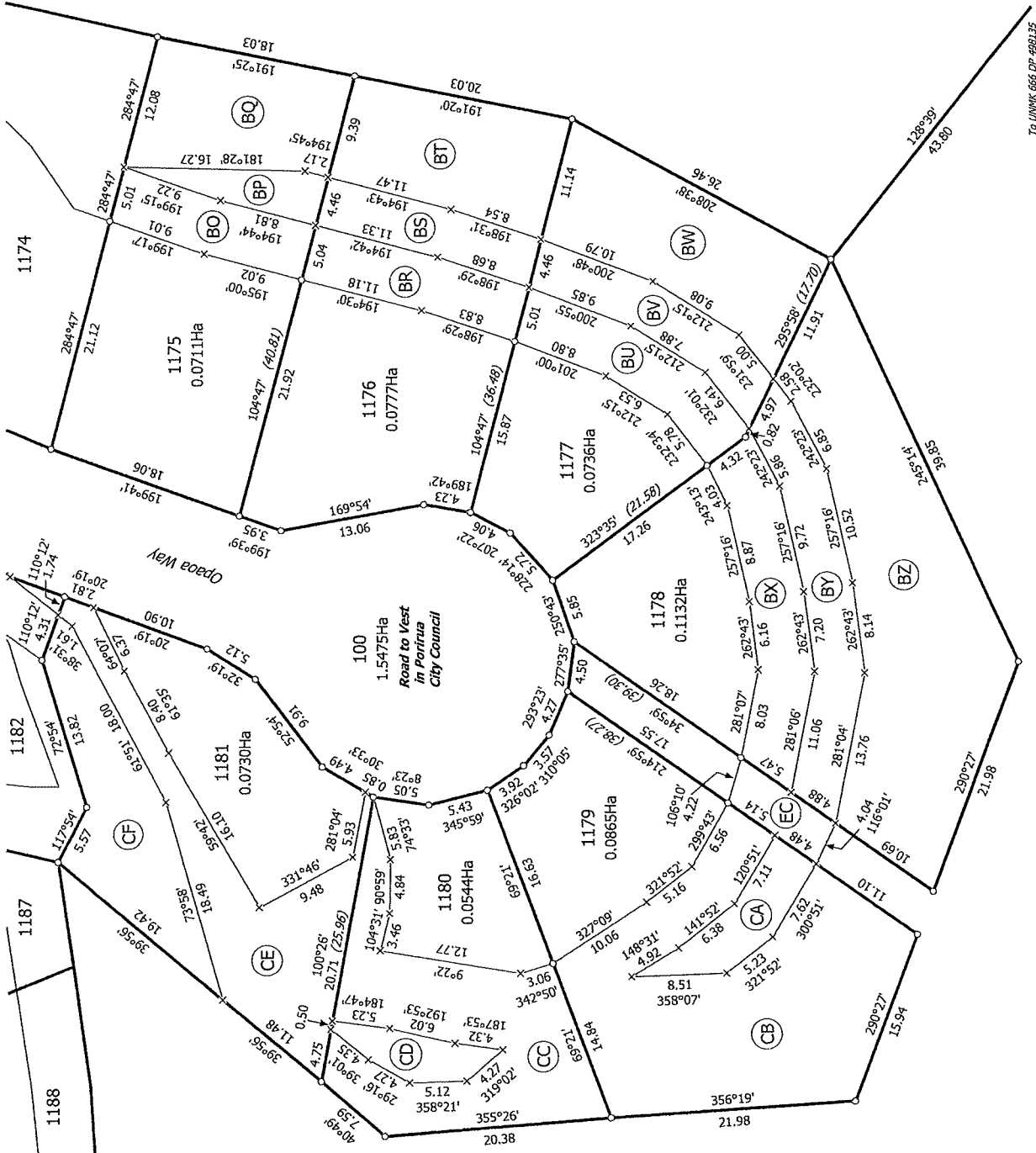
Surveyor: Hamlin Boyde-Manson  
 Firm: Cuttriss Consultants Ltd

Lots 1-4, 100, 278, 279, 280, 1134-1163 and 1166-1208 being a subdivision of Lot 271 DP 498135

Land District: Wellington  
 Digitally Generated Plan  
 Generated on: 21/01/2019 1:03pm Page 23 of 30



Diag. AO



T 15/21

Land District: Wellington

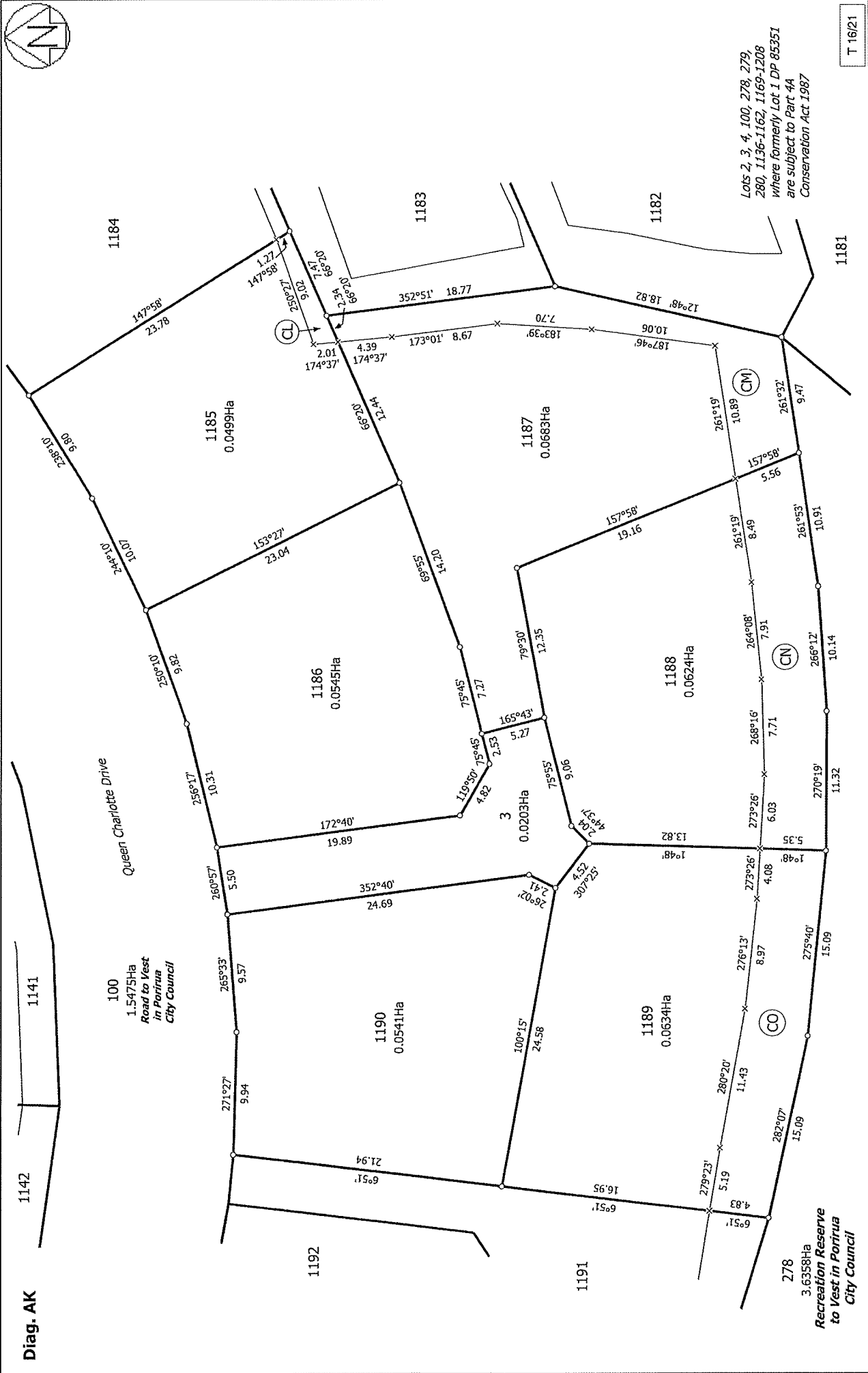
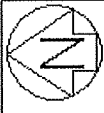
Lots 1-4, 100, 278, 279, 280, 1134-1163 and 1166-1208 being a subdivision of Lot 271 DP 498135

Surveyor: Hamlin Boyde-Manson  
Firm: Cuttriss Consultants Ltd

Title Plan  
LT 530586  
Approved on: 21/01/2019

Digitally Generated Plan  
Generated on: 21/01/2019 1:03pm Page 24 of 30





T 16/21

Title Plan  
 LT 530586  
 Approved on: 21/01/2019

Surveyor: Hamlin Boyle-Manson  
 Firm: Cuttriss Consultants Ltd

Lots 1-4, 100, 278, 279, 280, 1134-1163 and 1166-1208 being a subdivision of  
 Lot 271 DP 498135

Land District: Wellington  
 Digitally Generated Plan  
 Generated on: 21/01/2019 1:03pm Page 25 of 30

Diag. AK

1142

1141

100  
 1.5475Ha  
 Road to West  
 in Porirua  
 City Council

1184

1185  
 0.0499Ha

1192

1190  
 0.0541Ha

1186  
 0.0545Ha

3  
 0.0203Ha

1187  
 0.0683Ha

1189  
 0.0634Ha

1188  
 0.0624Ha

1191

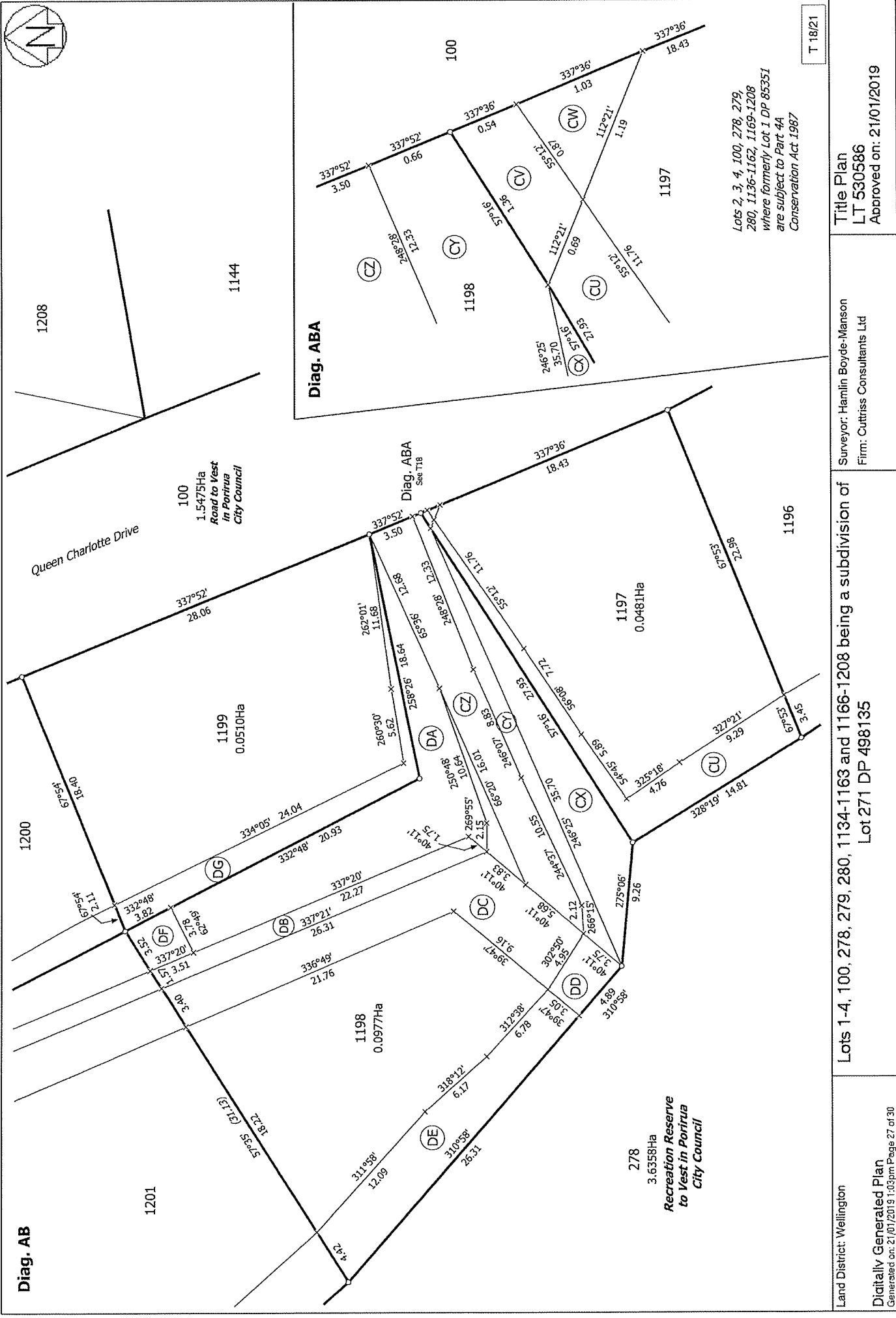
278  
 3.6358Ha  
 Recreation Reserve  
 to West in Porirua  
 City Council

1181

1182

Lots 2, 3, 4, 100, 278, 279,  
 280, 1136-1162, 1169-1208  
 where formerly Lot 1 DP 85351  
 are subject to Part 4A  
 Conservation Act 1987





T 18/21

Lots 2, 3, 4, 100, 278, 279, 280, 1136-1162, 1169-1208 where formerly Lot 1 DP 85351 are subject to Part 4A Conservation Act 1987

Title Plan  
LT 530586  
Approved on: 21/01/2019

Surveyor: Hamlin Boyde-Manson  
Firm: Cuttriss Consultants Ltd

Lots 1-4, 100, 278, 279, 280, 1134-1163 and 1166-1208 being a subdivision of Lot 271 DP 498135

Land District: Wellington  
Digitally Generated Plan  
Generated on: 21/01/2019 1:03pm Page 27 of 30

Diag. AB

Diag. ABA

Diag. ABA  
See T18

Queen Charlotte Drive

278  
3.6358Ha  
Recreation Reserve  
to Vest in Porirua  
City Council

100  
1.5475Ha  
Road to Vest  
in Porirua  
City Council

1201

1199  
0.0510Ha

1198  
0.0977Ha

1197  
0.0481Ha

1196

1208

1144

100

1198

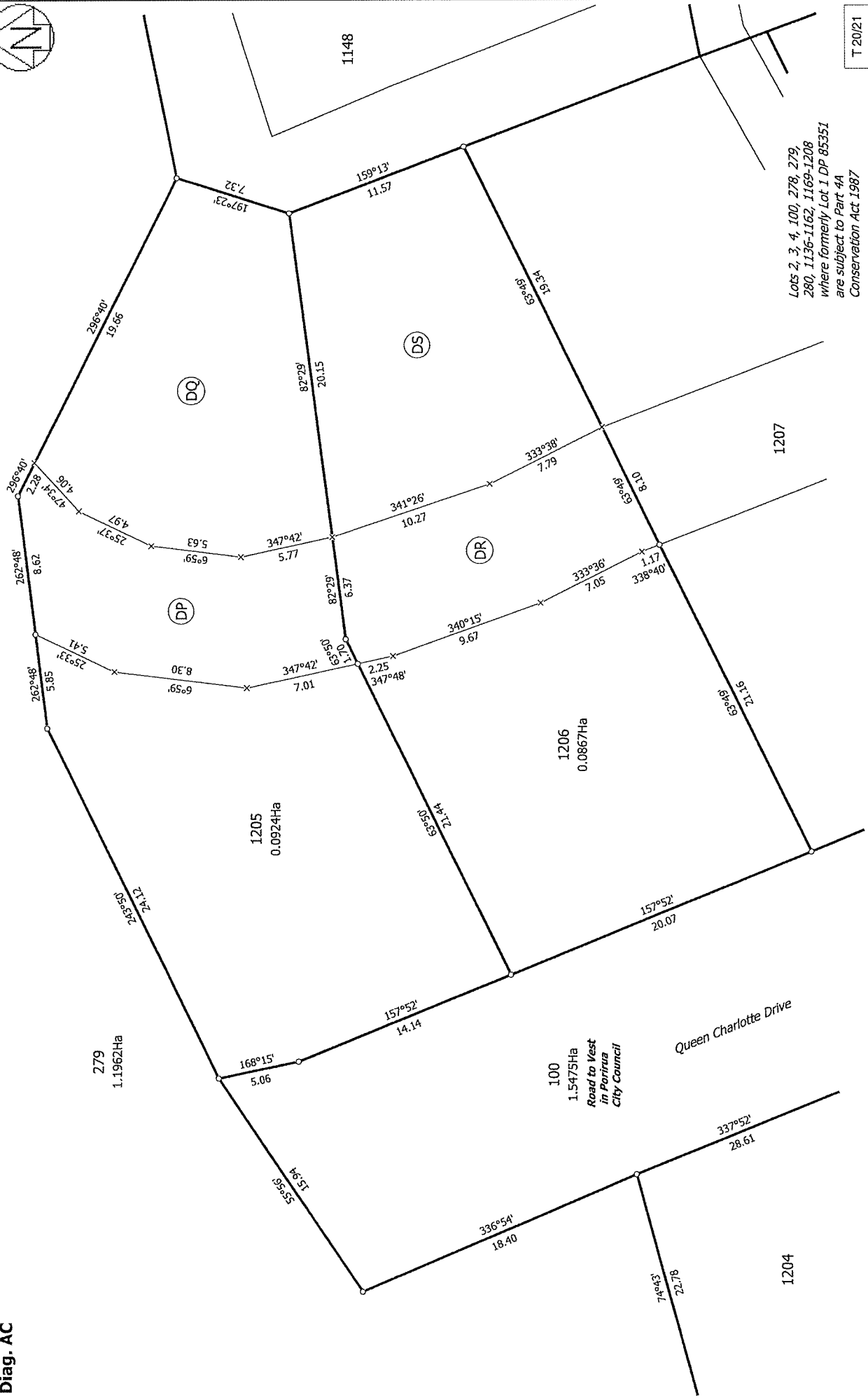
1197

1196





Diag. AC



T 20/21

Lots 2, 3, 4, 100, 278, 279,  
280, 1136-1162, 1169-1208  
where formerly Lot 1 DP 85351  
are subject to Part 4A  
Conservation Act 1987

Title Plan  
LT 530586  
Approved on: 21/01/2019

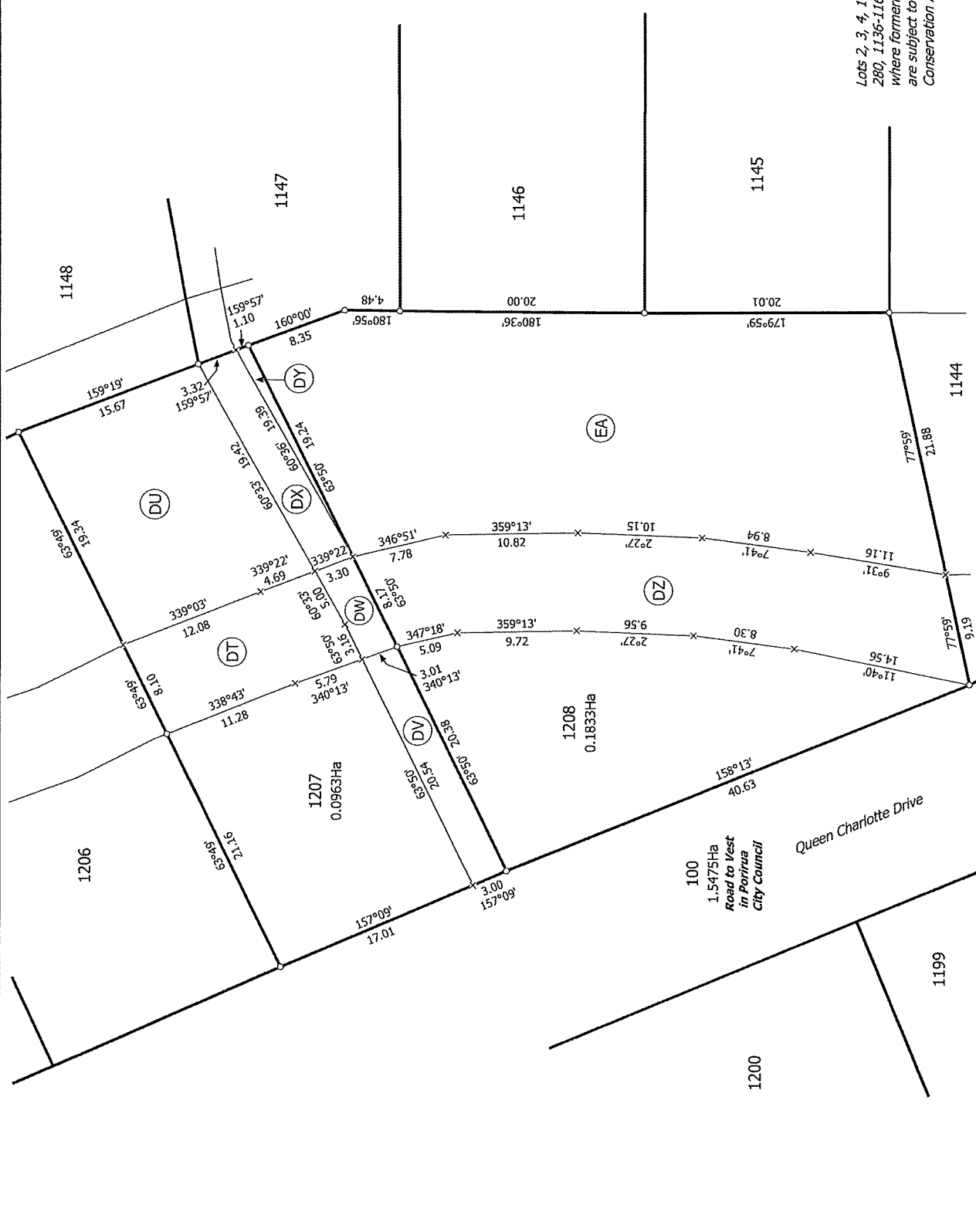
Surveyor: Hamlin Boyde-Manson  
Firm: Cuttriss Consultants Ltd

Lots 1-4, 100, 278, 279, 280, 1134-1163 and 1166-1208 being a subdivision of  
Lot 271 DP 498135

Land District: Wellington  
Digitally Generated Plan  
Generated on: 21/01/2019 1:03pm Page 29 of 30



Diag. AE



T 21/21

Land District: Wellington  
 Digitally Generated Plan  
 Generated on: 21/01/2019 1:03pm Page 30 of 30

Lots 1-4, 100, 278, 279, 280, 1134-1163 and 1166-1208 being a subdivision of Lot 271 DP 498135

Surveyor: Hamlin Boyde-Manson  
 Firm: Cuttriss Consultants Ltd

Title Plan  
 LT 530586  
 Approved on: 21/01/2019