

THIS DRAWING AND DESIGN REMAINS THE PROPERTY OF, AND MAY NOT BE REPRODUCED OR ALTERED, WITHOUT THE WRITTEN PERMISSION OF HARRISON GRIERSON CONSULTANTS LIMITED. NO LIABILITY SHALL BE ACCEPTED FOR UNAUTHORISED USE OF THIS DRAWING.

- NOTES:
- 1, Lot Layout is Indicative Only, Subject to Final Land Transfer Survey.
  - 3, Contours are shown at 1 metre Intervals.
  - 4, - - - - - Indicates Earthworks Extents.
  - 5, Indicates Cut Contours (109,840m3).
  - 6, Indicates Fill Contours (85,750m3).

**HARRISON GRIERSON**  
 CONSULTING ENGINEERS SURVEYORS PLANNERS  
 Level 16 Grand Plimmer Tower 2-6 Gilmer Terrace Wellington Ph 04 385 0005 Fax 04 385 0006

B	COMPLETED EARTHWORKS INCLUDING POND BACKFILL	PWJ	22.10.2009
A	INITIAL RELEASE	PWJ	28.01.2009
REF	AMENDMENT	BY	DATE

PROJECT:  
**CARRUS LIMITED  
 AOTEA BLOCK - PORIRUA  
 STAGE 8**

TITLE:  
**ASBUILT CUT / FILL CONTOURS**

DESIGNED:	DATE:	SIGNED:	PLOT BY:
DRAWN:	DATE:	SIGNED:	PLOT DATE:
CHECKED:	DATE:	SIGNED:	SURVEY BY:
APPROVED:	DATE:	SIGNED:	SURVEY DATE:

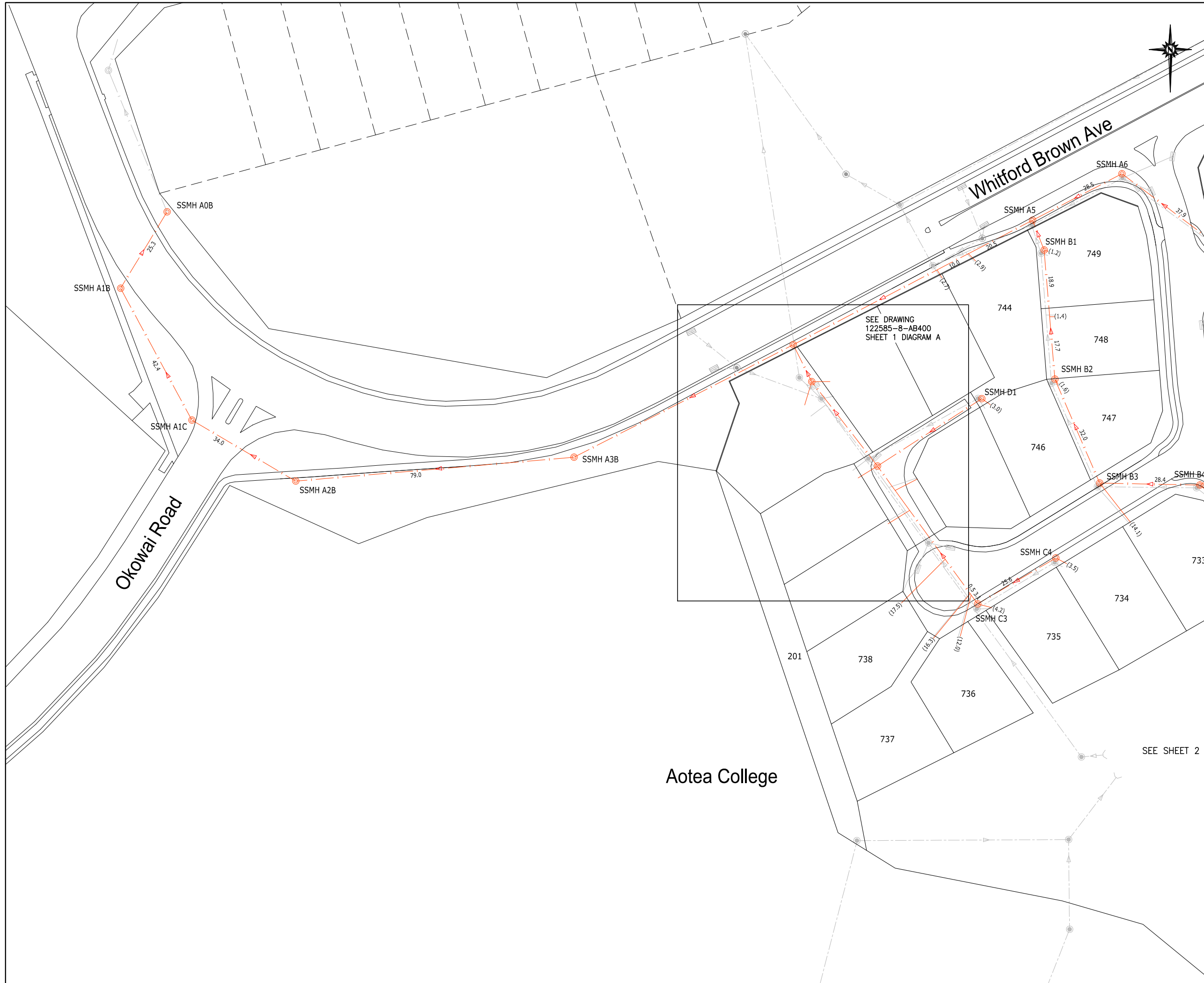
ISSUE STATUS:		<b>AS BUILT</b>	
PROJECT No:	1850-122585-10	SCALES:	1:750-A1 1:1500-A3
DRAWING No:	<b>122585-8-AB201</b>		A1 REV <b>B</b>

THIS DRAWING AND DESIGN REMAINS THE PROPERTY OF, AND MAY NOT BE REPRODUCED OR ALTERED, WITHOUT THE WRITTEN PERMISSION OF HARRISON GRIERSON CONSULTANTS LIMITED. NO LIABILITY SHALL BE ACCEPTED FOR UNAUTHORISED USE OF THIS DRAWING.

**LEGEND**

	STORMWATER LINE
	STORMWATER MANHOLE
	STORMWATER CONNECTION
	SUMP
	SEWER LINE
	SEWER MANHOLE
	SEWER CONNECTION
	EXISTING SEWER LINE
	EXISTING SEWER MANHOLE

- NOTE:**
- All house connections are 100mm dia uPVC.
  - All sewer main pipes are 150mm dia uPVC unless shown otherwise.
  - All positions and levels are accurate at time of survey.
  - Levels are in terms of Wellington Vertical Datum 1953. Origin BM LB51 SO 31708 (ACOP) R.L. = 2.936
  - Coordinates are in terms of NZGD2000 - Wellington Circuit.
  - All distances shown are horizontal distances, in metres.
  - Work completed as at October 2009.
  - Position of house connections based on information supplied by Walsh Contractors Wellington.
  - All distances shown are horizontal distances, in metres.



WARNING: Levels, locations and dimensions of drainage services shown on these plans may not be accurate due to circumstances not notified to Harrison Grierson Consultants Ltd. A physical check should be made on all levels, locations and dimensions before starting design or works.

**HARRISON GRIERSON**  
CONSULTING ENGINEERS SURVEYORS PLANNERS  
Level 16 Grand Plimmer Tower 2-6 Gilmer Terrace Wellington Ph 04 385 0005 Fax 04 385 0006

A	AS BUILT ISSUE	GMB	29.10.2009
REF	AMENDMENT	BY	DATE

PROJECT:  
**CARRUS LIMITED  
AOTEA BLOCK - PORIRUA  
STAGE 8**

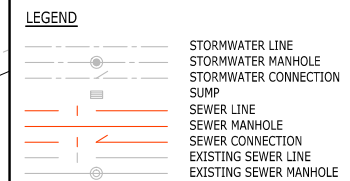
TITLE:  
**SANITARY SEWER AS-BUILT PLANS  
SHEET 1 OF 3**

DESIGNED:	DATE:	SIGNED:	PLOT BY:
DRAWN:	DATE:	SIGNED:	PLOT DATE:
CHECKED:	DATE:	SIGNED:	SURVEY BY:
APPROVED:	DATE:	SIGNED:	SURVEY DATE:

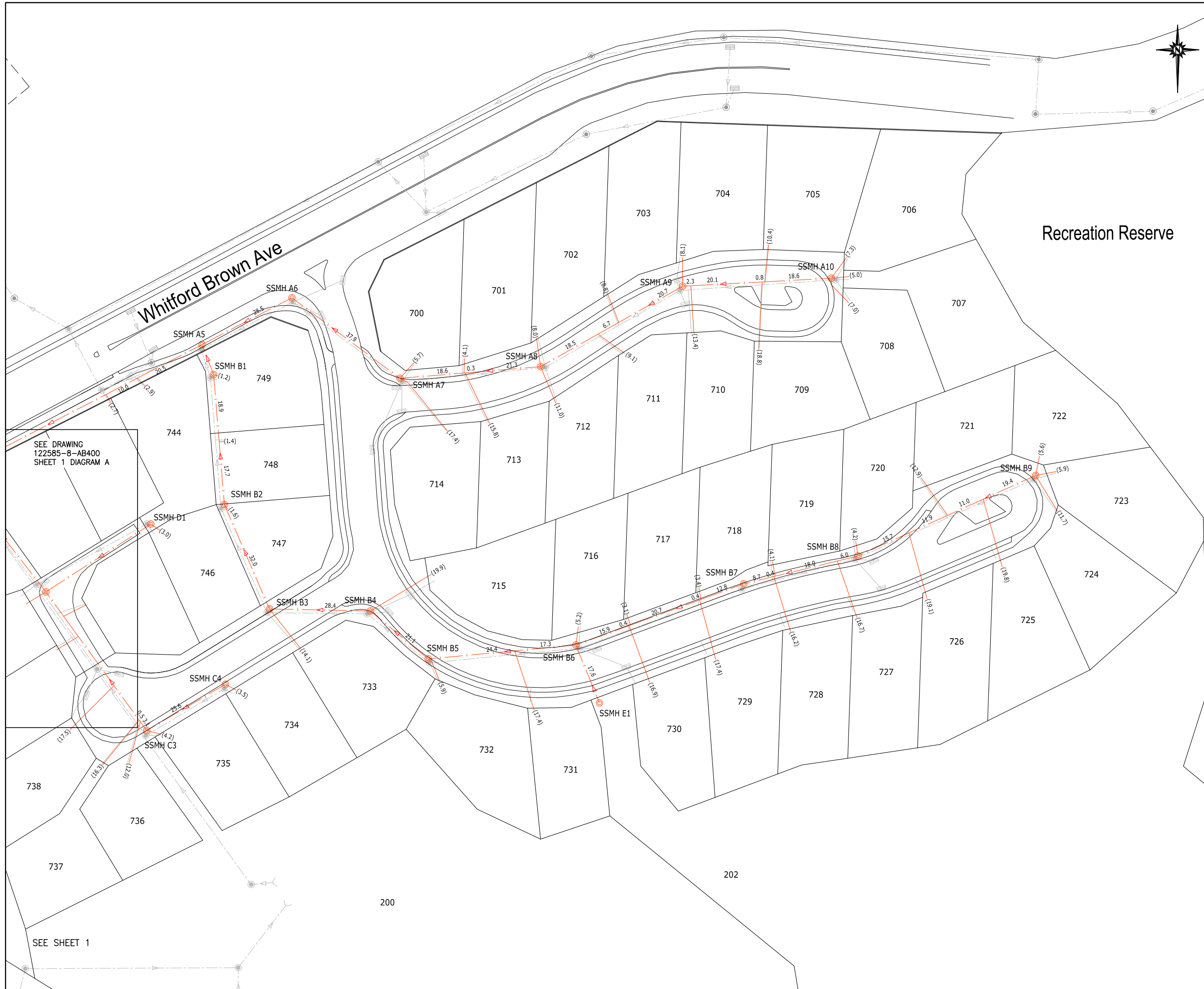
ISSUE STATUS: **AS BUILT**

PROJECT No:	1850-122585-11	SCALES:	1:500 (A1) 1:1000 (A3)	A1
DRAWING No:	122585-8-AB403	REV	A	

THIS DRAWING AND DESIGN REMAINS THE PROPERTY OF, AND MAY NOT BE REPRODUCED OR ALTERED, WITHOUT THE WRITTEN PERMISSION OF HARRISON GRIERSON CONSULTANTS LIMITED. NO LIABILITY SHALL BE ACCEPTED FOR UNAUTHORISED USE OF THIS DRAWING.



- NOTE:**
- All house connections are 100mm dia uPVC.
  - All sewer main pipes are 150mm dia uPVC unless shown otherwise.
  - All positions and levels are accurate at time of survey.
  - Levels are in terms of Wellington Vertical Datum 1953.  
Origin BM LB51 SO 31708 (ACOP)  
R.L. = 2.936
  - Coordinates are in terms of NZGD2000 - Wellington Circuit.
  - All distances shown are horizontal distances, in metres.
  - Work completed as at October 2009.
  - Position of house connections based on information supplied by Walsh Contractors Wellington.
  - All distances shown are horizontal distances, in metres.



WARNING: Levels, locations and dimensions of drainage services shown on these plans may not be accurate due to circumstances not notified to Harrison Grierson Consultants Ltd. A physical check should be made on all levels, locations and dimensions before starting design or works.

**HARRISON GRIERSON**  
CONSULTING ENGINEERS SURVEYORS PLANNERS  
Level 16 Grand Plimmer Tower 2-6 Gilmer Terrace Wellington Ph 04 385 0005 Fax 04 385 0006

REF	AMENDMENT	BY	DATE
A	AS BUILT ISSUE	GMB	29.10.2009

PROJECT:  
**CARRUS LIMITED  
AOTEA BLOCK - PORIRUA  
STAGE 8**

TITLE:  
**SANITARY SEWER AS-BUILT PLANS  
SHEET 2 OF 3**

DESIGNED:	DATE:	SIGNED:	PLOT BY:
GMB	10.2009		NDH
DRAWN:	DATE:	SIGNED:	PLOT DATE:
GMB	10.2009		02.11.09
CHECKED:	DATE:	SIGNED:	SURVEY BY:
BWH	29.10.2009		GMB
APPROVED:	DATE:	SIGNED:	SURVEY DATE:
AMB	29.10.2009		10.2009

ISSUE STATUS: **AS BUILT**

PROJECT No: 1850-122585-11	SCALES: 1:500 (A1) 1:1000 (A3)	A1
DRAWING No: <b>122585-8-AB404</b>		REV <b>A</b>

**NOTE:**

- Levels are in terms of Wellington Vertical Datum 1953. Origin BM LB51 SO 31708 (ACOP) R.L = 2.936
- Coordinates are in terms of NZGD2000 - Wellington Circuit.

MH No	mN	mE	LL	IL	DEPTH
SSMH A0B	819837.17	406636.87	10.54	8.73	1.81
SSMH A1B	819815.59	406623.75	12.44	10.89	1.55
SSMH A1C	819778.35	406643.90	16.34	14.75	1.59
SSMH A2B	819761.11	406673.24	17.88	16.60	1.28
SSMH A3B	819767.85	406751.94	21.38	19.69	1.69
SSMH A4	819799.65	406813.91	21.80	20.33	1.47
SSMH A5	819834.82	406881.58	26.45	24.93	1.52
SSMH A6	819847.94	406906.82	28.34	26.64	1.70
SSMH A7	819825.32	406937.19	32.06	30.16	1.90
SSMH A8	819828.62	406976.72	37.06	35.46	1.60
SSMH A9	819851.20	407016.63	42.45	40.50	1.95
SSMH A10	819853.42	407058.36	45.35	43.43	1.92
SSMH B1	819826.38	406884.83	29.89	27.91	1.98
SSMH B2	819789.91	406887.86	31.72	29.72	2.00
SSMH B3	819760.56	406900.54	33.50	31.69	1.81
SSMH B4	819759.98	406928.88	37.05	35.18	1.87
SSMH B5	819746.52	406945.12	39.29	37.40	1.89
SSMH B6	819750.42	406986.61	44.37	42.07	2.30
SSMH B7	819767.60	407033.76	50.63	48.78	1.85
SSMH B8	819775.45	407065.90	54.69	52.74	1.95
SSMH B9	819798.05	407115.78	58.50	56.62	1.88
SSMH C1	819789.21	406819.14	25.45	23.28	2.17
SSMH C2	819765.36	406837.71	26.79	25.69	1.10
SSMH C3	819726.42	406866.03	28.36	26.69	1.67
SSMH C4	819739.39	406888.13	30.84	29.47	1.37
SSMH D1	819784.40	406867.19	29.39	27.84	1.55
SSMH E1	819734.15	406993.23	45.20	42.90	2.30

WARNING: Levels, locations and dimensions of drainage services shown on these plans may not be accurate due to circumstances not notified to Harrison Grierson Consultants Ltd. A physical check should be made on all levels, locations and dimensions before starting design or works.




A	AS BUILT ISSUE	GMB	29.10.2009
REF	AMENDMENT	BY	DATE

PROJECT:  
**CARRUS LIMITED  
 AOTEA BLOCK - PORIRUA  
 STAGE 8**

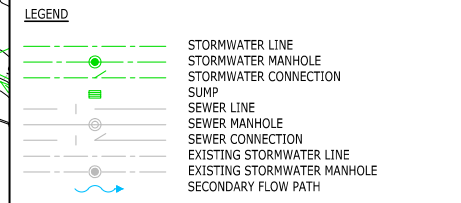
TITLE:  
**SANITARY SEWER AS-BUILT PLANS  
 SHEET 3 OF 3**

DESIGNED:	DATE:	SIGNED:	PLOT BY:
			NDH
DRAWN:	DATE:	SIGNED:	PLOT DATE:
GMB	10.2009		02.11.09
CHECKED:	DATE:	SIGNED:	SURVEY BY:
BWH	29.10.2009		GMB
APPROVED:	DATE:	SIGNED:	SURVEY DATE:
AMB	29.10.2009		10.2009

ISSUE STATUS:  
**AS BUILT**

PROJECT No: 1850-122585-11	SCALES:	A1
DRAWING No: <b>122585-8-AB405</b>	REV	<b>A</b>

THIS DRAWING AND DESIGN REMAINS THE PROPERTY OF, AND MAY NOT BE REPRODUCED OR ALTERED, WITHOUT THE WRITTEN PERMISSION OF HARRISON GRIERSON CONSULTANTS LIMITED. NO LIABILITY SHALL BE ACCEPTED FOR UNAUTHORISED USE OF THIS DRAWING.



- NOTE:**
1. All house connections are 100mm dia uPVC.
  2. All single sump leads are 225mm dia uPVC.
  3. All double sump leads are 300mm dia uPVC.
  4. All positions and levels are accurate as at time of survey.
  5. Levels are in terms of Wellington Vertical Datum 1953. Origin BM LB51 SO 31708 (ACOP) R.L = 2.936
  6. Coordinates are in terms of NZGD2000 - Wellington Circuit.
  7. Work completed as at October 2009.
  8. Position of house connections based on information supplied by Walsh Contractors Wellington.
  9. All distances shown are horizontal distances, in metres.

**STORMWATER LINE - PIPE MATERIALS:**  
 (unless shown otherwise)

- 150 dia - uPVC
- 225 dia - uPVC
- 300 dia - uPVC
- 375 dia - uPVC
- 450 dia - RCRJ Class X
- 525 dia - RCRJ Class X

**WARNING:** Levels, locations and dimensions of drainage services shown on these plans may not be accurate due to circumstances not notified to Harrison Grierison Consultants Ltd. A physical check should be made on all levels, locations and dimensions before starting design or works.

**HARRISON GRIERSON**  
 CONSULTING ENGINEERS SURVEYORS PLANNERS  
 Level 16 Grand Plimmer Tower 2-6 Gilmer Terrace Wellington Ph 04 385 0005 Fax 04 385 0006

A	AS BUILT ISSUE	GMB	29.10.2009
REF	AMENDMENT	BY	DATE

PROJECT:  
**CARRUS LIMITED  
 AOTEA BLOCK - PORIRUA  
 STAGE 8**

TITLE:  
**STORMWATER AS BUILT PLANS  
 SHEET 1 OF 3**

DESIGNED:	DATE:	SIGNED:	PLOT BY:	NDH
DRAWN:	DATE:	SIGNED:	PLOT DATE:	02.11.09
CHECKED:	DATE:	SIGNED:	SURVEY BY:	GMB
APPROVED:	DATE:	SIGNED:	SURVEY DATE:	10.2009

ISSUE STATUS: **AS BUILT**

PROJECT No:	1850-122585-11	SCALES:	1:500 (A1) 1:1000 (A3)	A1
DRAWING No:	<b>122585-8-AB400</b>			REV
				<b>A</b>

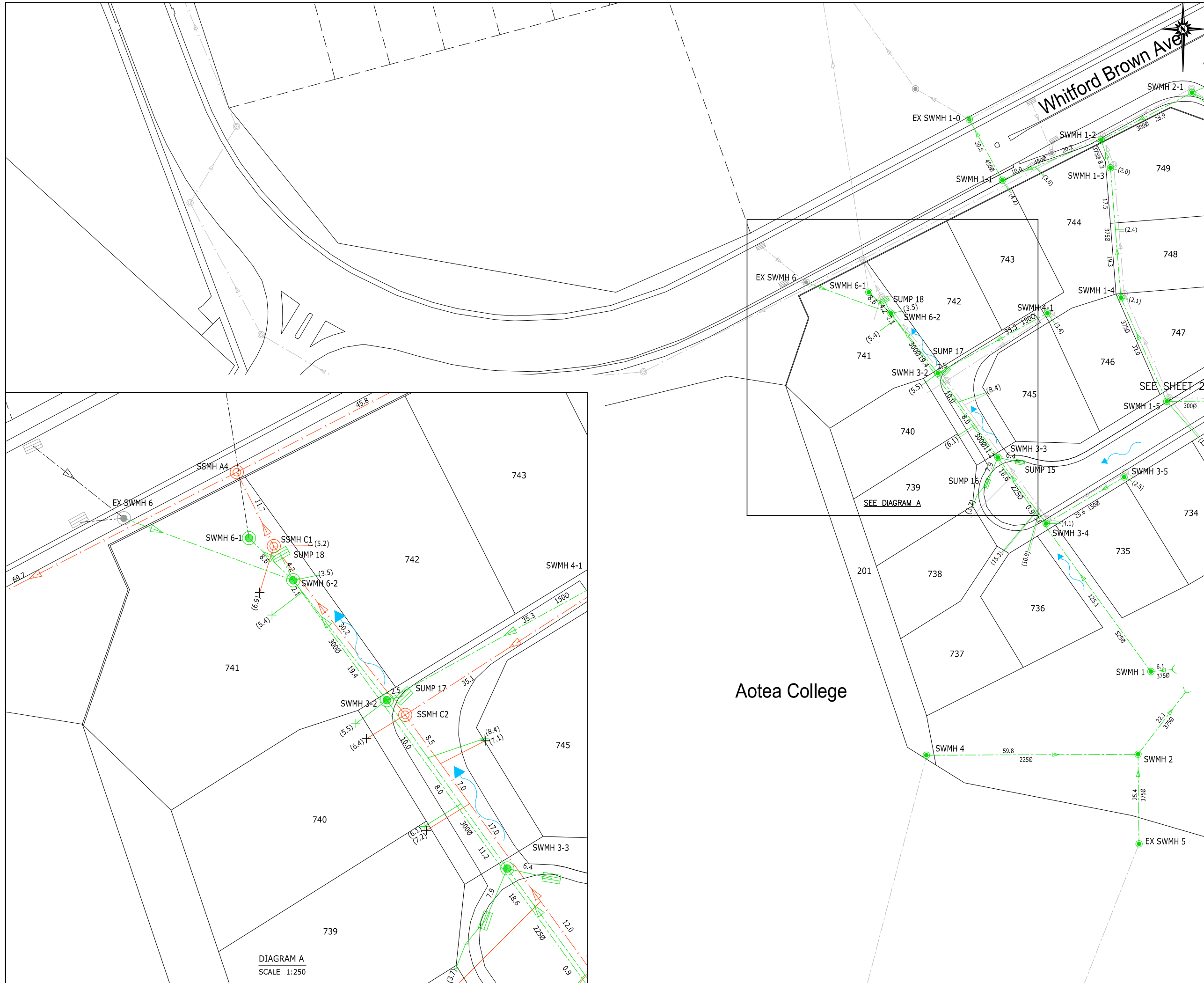
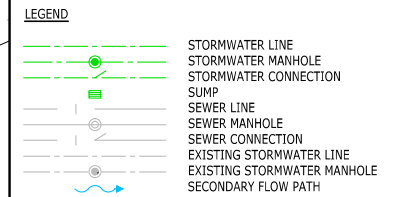


DIAGRAM A  
 SCALE 1:250

Aotea College

THIS DRAWING AND DESIGN REMAINS THE PROPERTY OF, AND MAY NOT BE REPRODUCED OR ALTERED, WITHOUT THE WRITTEN PERMISSION OF HARRISON GRIERSON CONSULTANTS LIMITED. NO LIABILITY SHALL BE ACCEPTED FOR UNAUTHORISED USE OF THIS DRAWING.



- NOTE:**
1. All house connections are 100mm dia uPVC.
  2. All single sump leads are 225mm dia uPVC.
  3. All double sump leads are 300mm dia uPVC.
  4. All positions and levels are accurate as at time of survey.
  5. Levels are in terms of Wellington Vertical Datum 1953. Origin BM LB51 SO 31708 (ACOP) R.L = 2.936
  6. Coordinates are in terms of NZGD2000 - Wellington Circuit.
  7. Work completed as at October 2009.
  8. Position of house connections based on information supplied by Walsh Contractors Wellington.
  9. All distances shown are horizontal distances, in metres.

**STORMWATER LINE - PIPE MATERIALS:**  
(unless shown otherwise)

- 150 dia - uPVC
- 225 dia - uPVC
- 300 dia - uPVC
- 375 dia - uPVC
- 450 dia - RCRRJ Class X
- 525 dia - RCRRJ Class X

**WARNING:** Levels, locations and dimensions of drainage services shown on these plans may not be accurate due to circumstances not notified to Harrison Grierson Consultants Ltd. A physical check should be made on all levels, locations and dimensions before starting design or works.

**HARRISON GRIERSON**  
CONSULTING ENGINEERS SURVEYORS PLANNERS  
Level 16 Grand Plimmer Tower 2-6 Gilmer Terrace Wellington Ph 04 385 0005 Fax 04 385 0006

A	AS BUILT ISSUE	GMB	29.10.2009
REF	AMENDMENT	BY	DATE

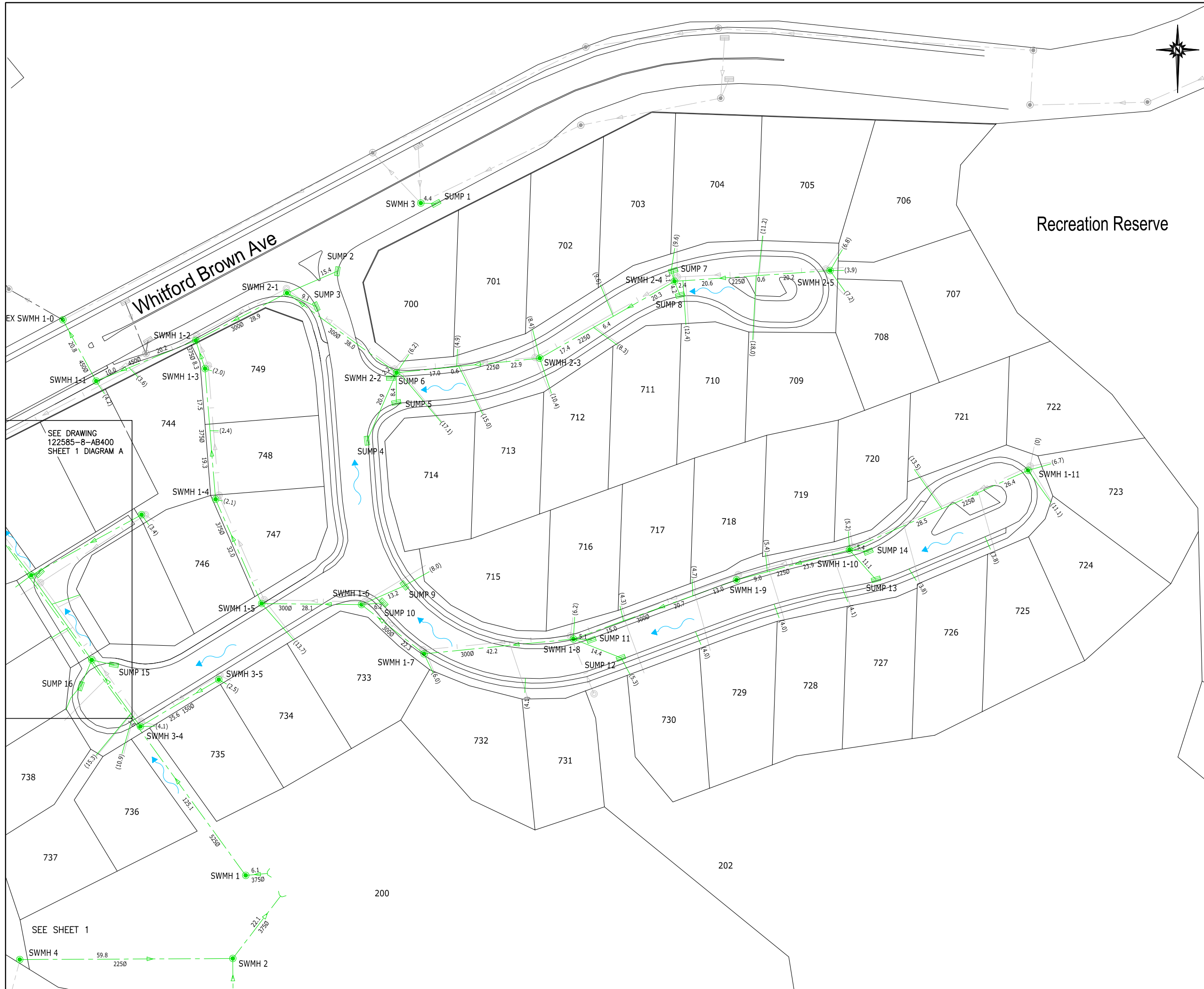
**CARRUS LIMITED**  
**AOTEA BLOCK - PORIRUA**  
**STAGE 8**

**TITLE:**  
**STORMWATER AS BUILT PLANS**  
**SHEET 2 OF 3**

DESIGNED:	DATE:	SIGNED:	PLOT BY:	NDH
DRAWN:	DATE:	SIGNED:	PLOT DATE:	02.11.09
CHECKED:	DATE:	SIGNED:	SURVEY BY:	GMB
APPROVED:	DATE:	SIGNED:	SURVEY DATE:	10.2009

ISSUE STATUS: **AS BUILT**

PROJECT No:	1850-122585-11	SCALES:	1:500 (A1) 1:1000 (A3)	A1
DRAWING No:	122585-8-AB401			REV <b>A</b>



SEE DRAWING  
122585-8-AB400  
SHEET 1 DIAGRAM A

SEE SHEET 1

**NOTE:**

- Levels are in terms of Wellington Vertical Datum 1953. Origin BM LB51 SO 31708 (ACOP) R.L = 2,936
- Coordinates are in terms of NZGD2000 - Wellington Circuit.

MH No	mN	mE	LL	IL	DEPTH
EX-SWMH 1-0	819839.20	406844.04	24.01	21.41	2.60
SWMH 1-1	819821.99	406853.38	24.02	22.52	1.50
SWMH 1-2	819833.39	406881.34	26.44	24.33	2.11
SWMH 1-3	819825.48	406883.96	30.04	27.91	2.13
SWMH 1-4	819788.78	406886.91	31.64	29.78	1.86
SWMH 1-5	819759.52	406899.86	33.37	31.64	1.73
SWMH 1-6	819759.22	406927.93	36.98	35.12	1.86
SWMH 1-7	819745.40	406945.50	39.40	37.52	1.88
SWMH 1-8	819749.55	406987.45	44.39	42.18	2.21
SWMH 1-9	819766.12	407033.25	50.49	48.59	1.90
SWMH 1-10	819774.57	407065.01	54.52	52.63	1.89
SWMH 1-11	819796.89	407115.18	58.45	56.51	1.94
SWMH 2-1	819846.70	406906.98	28.45	26.63	1.82
SWMH 2-2	819824.33	406937.76	32.08	30.38	1.70
SWMH 2-3	819828.41	406978.01	37.16	35.57	1.59
SWMH 2-4	819849.98	407015.84	42.41	40.32	2.09
SWMH 2-5	819853.02	407059.58	45.45	43.63	1.82
SWMH 3-2	819767.44	406835.12	26.73	25.43	1.30
SWMH 3-3	819743.68	406852.14	27.58	26.10	1.48
SWMH 3-4	819725.02	406865.79	28.36	26.68	1.68
SWMH 3-5	819738.14	406887.81	30.82	29.40	1.42
SWMH 4-1	819784.45	406866.11	29.32	27.71	1.61
SWMH 1	819683.17	406895.37	23.83	21.03	2.80
SWMH 2	819659.82	406891.75	32.88	31.10	1.78
SWMH 3	819871.98	406944.56	30.89	29.29	1.60
SWMH 4	819659.54	406831.91	38.86	38.23	0.63
EX-SWMH 5	819634.47	406892.00	42.34	39.89	2.45
EX-SWMH 6	819793.16	406797.94	21.25	19.68	1.57
SWMH 6-1	819790.33	406815.63	24.75	8.60	16.15
SWMH 6-2	819784.37	406821.89	25.65	18.25	7.40

SUMP No	mN	mE	LL
SUMP 1	819871.89	406948.88	30.94
SUMP 2	819852.83	406921.14	28.82
SUMP 3	819842.93	406915.26	29.24
SUMP 4	819805.41	406929.40	32.96
SUMP 5	819816.01	406937.71	32.09
SUMP 6	819822.80	406936.18	31.82
SUMP 7	819853.01	407015.50	42.24
SUMP 8	819846.13	407017.44	42.40
SUMP 9	819764.55	406939.92	37.38
SUMP 10	819759.75	406934.06	37.35
SUMP 11	819749.30	406992.51	44.84
SUMP 12	819744.27	407000.80	45.59
SUMP 13	819766.31	407072.47	54.98
SUMP 14	819774.11	407070.34	54.90
SUMP 15	819742.30	406858.37	27.77
SUMP 16	819736.38	406849.08	27.39
SUMP 17	819768.06	406837.59	26.63
SUMP 18	819788.14	406820.03	25.23

WARNING: Levels, locations and dimensions of drainage services shown on these plans may not be accurate due to circumstances not notified to Harrison Grierson Consultants Ltd. A physical check should be made on all levels, locations and dimensions before starting design or works.



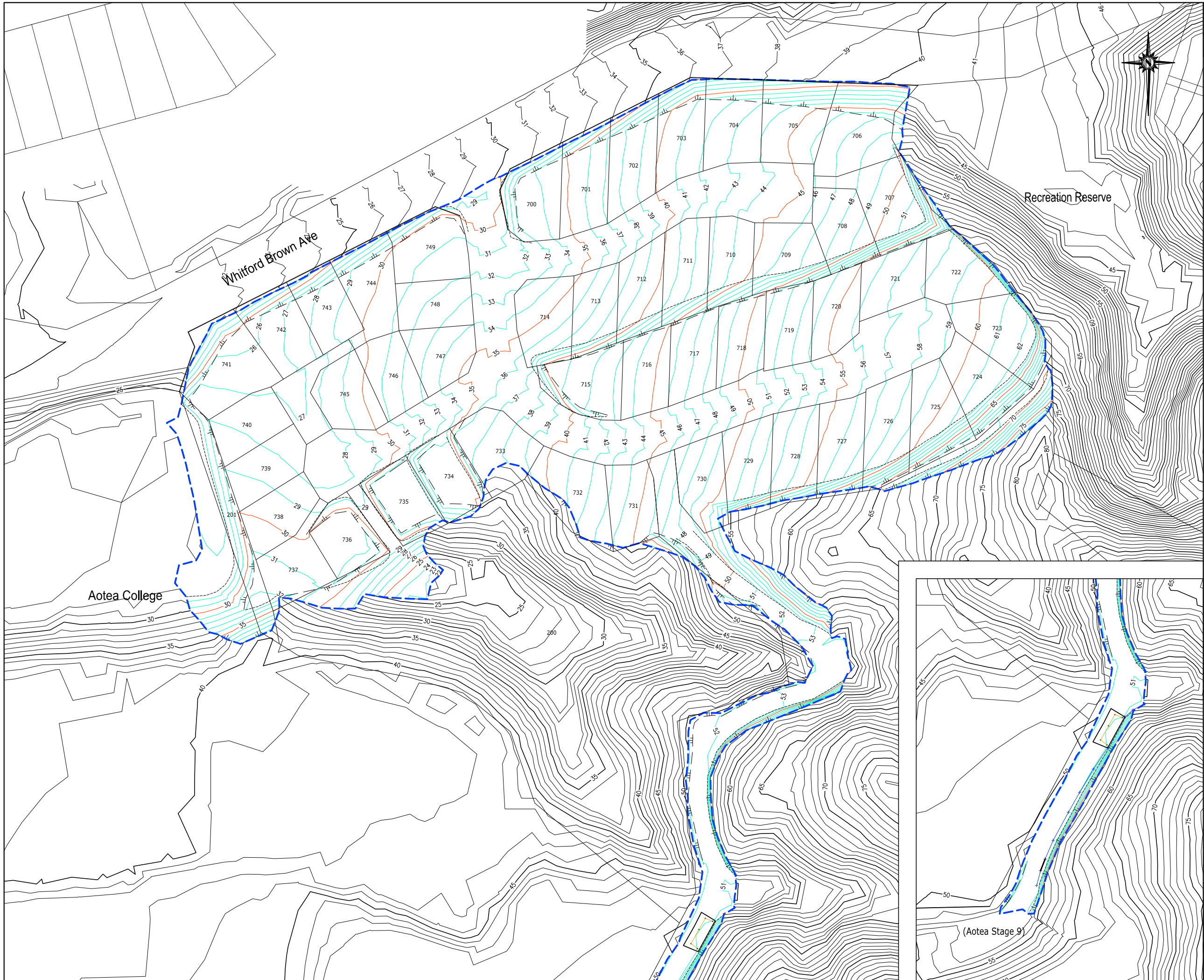
A	AS BUILT ISSUE	GMB	29.10.2009
REF	AMENDMENT	BY	DATE

PROJECT:  
**CARRUS LIMITED  
 AOTEA BLOCK - PORIRUA  
 STAGE 8**

TITLE:  
**STORMWATER AS BUILT PLANS  
 SHEET 3 OF 3**

DESIGNED:	DATE:	SIGNED:	PLOT BY:
DRAWN:	DATE:	SIGNED:	PLOT DATE:
CHECKED:	DATE:	SIGNED:	SURVEY BY:
APPROVED:	DATE:	SIGNED:	SURVEY DATE:

ISSUE STATUS:		<b>AS BUILT</b>
PROJECT No:	1850-122585-11	SCALES:
DRAWING No:	<b>122585-8-AB402</b>	REV
		<b>A</b>



THIS DRAWING AND DESIGN REMAINS THE PROPERTY OF, AND MAY NOT BE REPRODUCED OR ALTERED, WITHOUT THE WRITTEN PERMISSION OF HARRISON GRIERSON CONSULTANTS LIMITED. NO LIABILITY SHALL BE ACCEPTED FOR UNAUTHORISED USE OF THIS DRAWING.

- NOTES:
- 1, Lot Layout is Indicative Only, Subject to Final Land Transfer Survey.
  - 3, Contours are shown at 1 metre Intervals.
  - 4, - - - - - Indicates Earthworks Extents.
  - 5, Indicates Asbuilt Subgrade Contours.
  - 6, Indicates Existing Contours.
  - 7, Indicates Top of Bank.
  - 8, Indicates Bottom of Bank.

**HARRISON GRIERSON**  
 CONSULTING ENGINEERS SURVEYORS PLANNERS  
 Level 16 Grand Plimmer Tower 2-6 Gilmer Terrace Wellington Ph 04 385 0005 Fax 04 385 0006

B	COMPLETED EARTHWORKS INCLUDING POND BACKFILL	PWJ	22.10.2009
A	INITIAL RELEASE	PWJ	28.01.2009
REF	AMENDMENT	BY	DATE

PROJECT:  
**CARRUS LIMITED  
 AOTEA BLOCK - PORIRUA  
 STAGE 8**

TITLE:  
**ASBUILT SUBGRADE CONTOURS**

DESIGNED:	DATE:	SIGNED:	PLOT BY:
DRAWN:	DATE:	SIGNED:	PLOT DATE:
CHECKED:	DATE:	SIGNED:	SURVEY BY:
APPROVED:	DATE:	SIGNED:	SURVEY DATE:

ISSUE STATUS: **AS BUILT**

PROJECT No:	1850-122585-10	SCALES:	1:750-A1 1:1500-A3	A1
DRAWING No:	<b>122585-8-AB200</b>			REV <b>B</b>





**LEGEND**

- FIRE HYDRANT
- GATE VALVE
- SLUICE VALVE
- WATER TOBY
- END CAP
- 150mm DIA uPVC WATERMAIN
- EXISTING 250mm DIA AC WATERMAIN
- 50mm DIA MDPE RIDERMAIN

**NOTE:**

1. Levels are in terms of Wellington Vertical Datum 1953. Origin BM LB51 SO 31708 (ACOP) R.L. = 2,936
2. Coordinates are in terms of NZGD2000 - Wellington Circuit.
3. All dimensions are given in metres unless otherwise stated.

WARNING: Levels, locations and dimensions of water services shown on these plans may not be accurate due to circumstances not notified to Harrison Grierson Consultants Ltd. A physical check should be made on all levels, locations and dimensions before starting design or works.

**HARRISON GRIERSON**  
 CONSULTING ENGINEERS SURVEYORS PLANNERS  
 Level 16 Grand Plimmer Tower 2-6 Gilmer Terrace Wellington Ph 04 385 0005 Fax 04 385 0006

A	AS BUILT ISSUE	GMB	29.10.2009
REF	AMENDMENT	BY	DATE

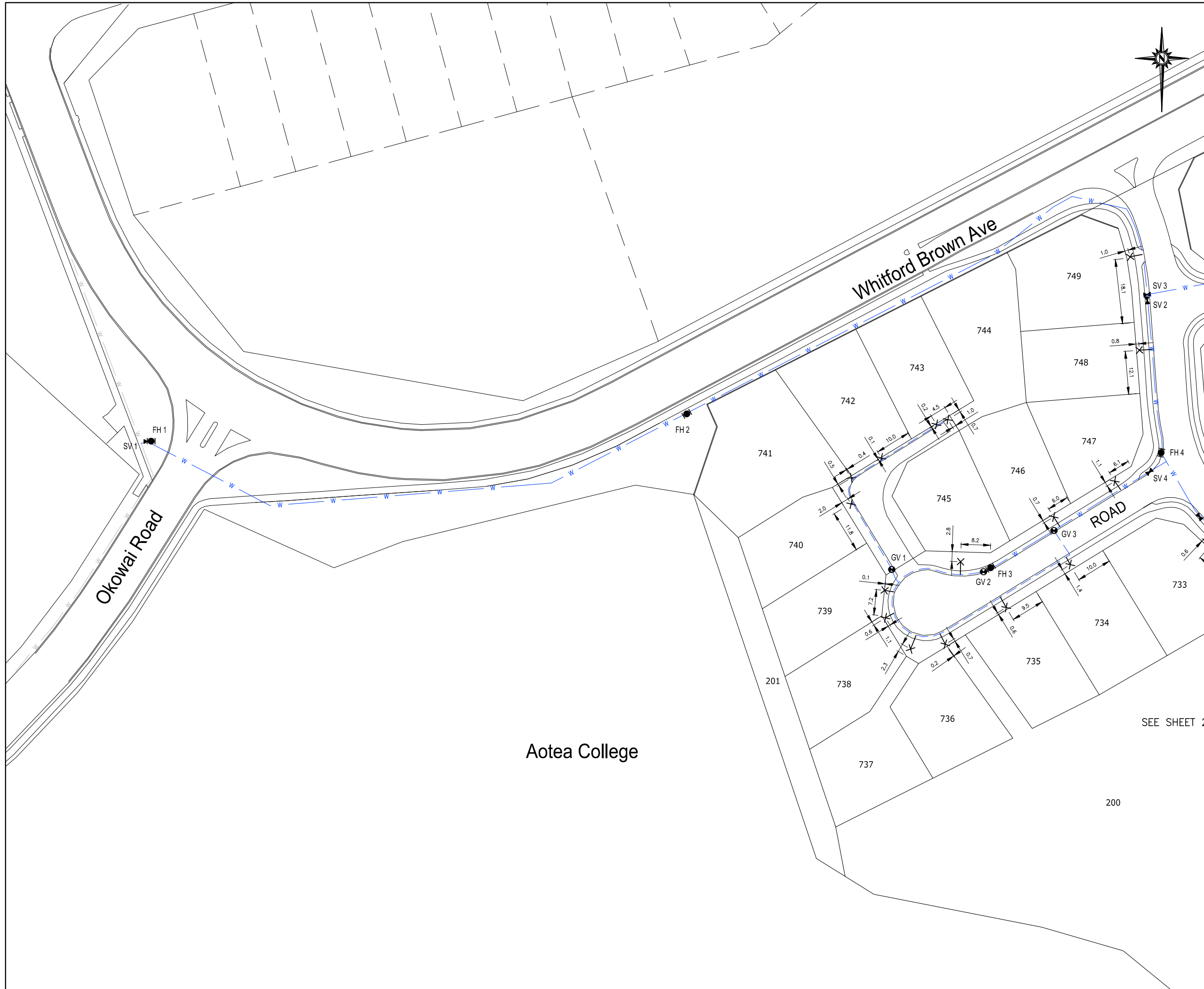
PROJECT:  
**CARRUS LIMITED  
 AOTEA BLOCK - PORIRUA  
 STAGE 8**

TITLE:  
**WATER RETICULATION  
 AS BUILT PLANS  
 SHEET 1 OF 4**

DESIGNED:	DATE:	SIGNED:	PLOT BY:
DRAWN:	DATE:	SIGNED:	PLOT DATE:
CHECKED:	DATE:	SIGNED:	SURVEY BY:
APPROVED:	DATE:	SIGNED:	SURVEY DATE:

ISSUE STATUS: **AS BUILT**

PROJECT No:	1850-122585-11	SCALES:	1:500-A1 1:1000-A3	A1
DRAWING No:	<b>122585-8-AB500</b>			REV
				<b>A</b>



Aotea College

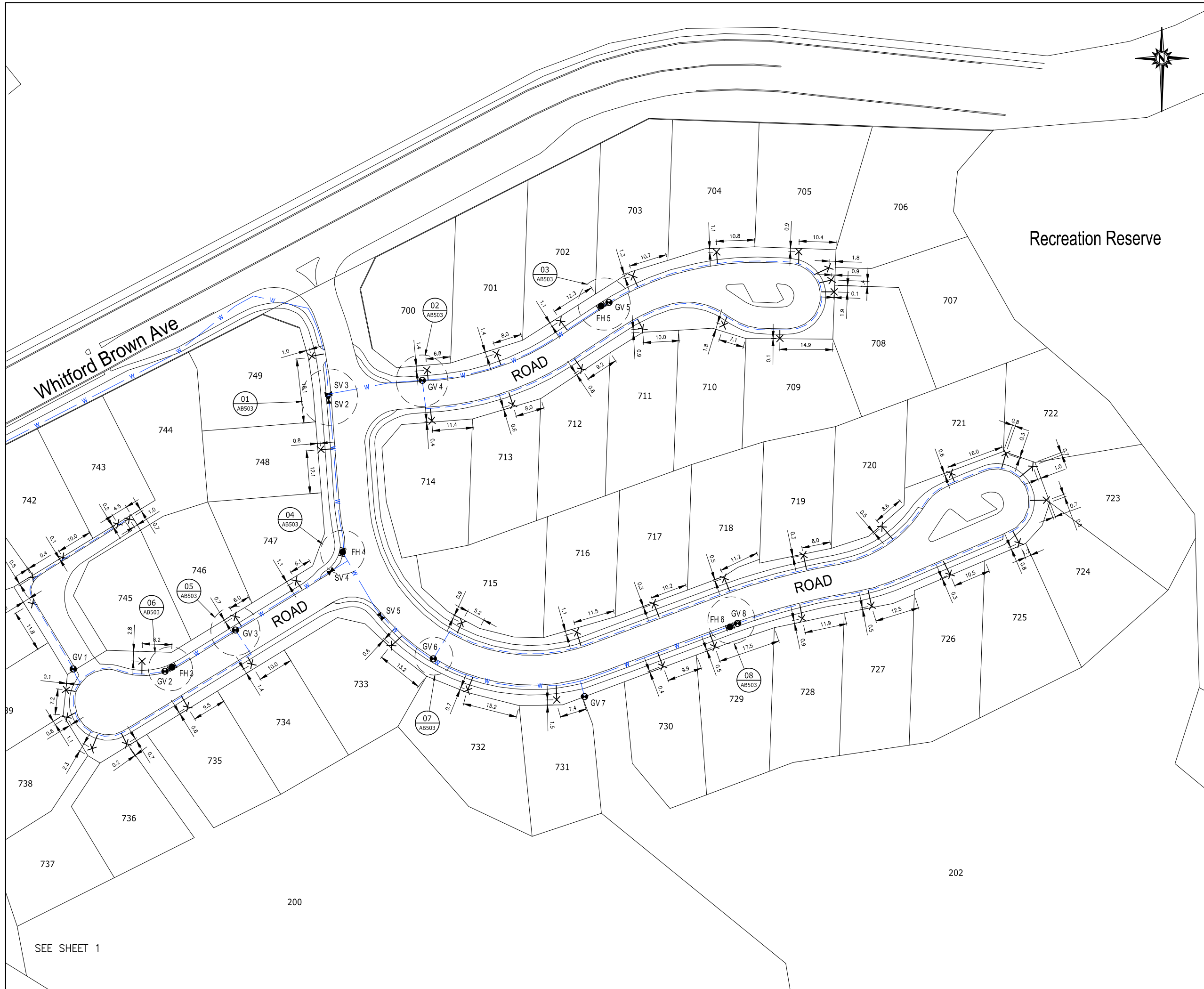
SEE SHEET 2

**LEGEND**

- FIRE HYDRANT
- GATE VALVE
- SLUICE VALVE
- WATER TOBY
- END CAP
- 150mm DIA uPVC WATERMAIN
- EXISTING 250mm DIA AC WATERMAIN
- 50mm DIA MDPE RIDERMAIN

**NOTE:**

1. Levels are in terms of Wellington Vertical Datum 1953. Origin BM LB51 SO 31708 (ACOP) R.L. = 2,936
2. Coordinates are in terms of NZGD2000 - Wellington Circuit.
3. All dimensions are given in metres unless otherwise stated.



Recreation Reserve

WARNING: Levels, locations and dimensions of water services shown on these plans may not be accurate due to circumstances not notified to Harrison Grierson Consultants Ltd. A physical check should be made on all levels, locations and dimensions before starting design or works.

**HARRISON GRIERSON**  
 CONSULTING ENGINEERS SURVEYORS PLANNERS  
 Level 16 Grand Plimmer Tower 2-6 Gilmer Terrace Wellington Ph 04 385 0005 Fax 04 385 0006

A	AS BUILT ISSUE	GMB	29.10.2009
REF	AMENDMENT	BY	DATE

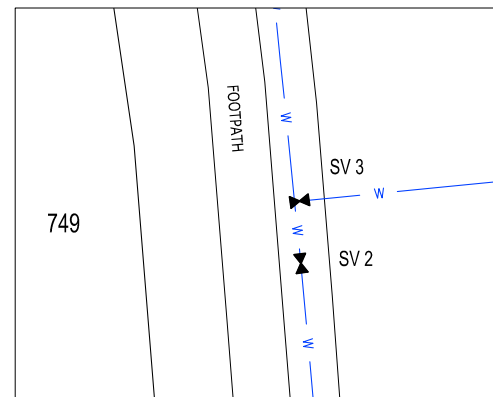
PROJECT:  
**CARRUS LIMITED  
 AOTEA BLOCK - PORIRUA  
 STAGE 8**

TITLE:  
**WATER RETICULATION  
 AS BUILT PLANS  
 SHEET 2 OF 4**

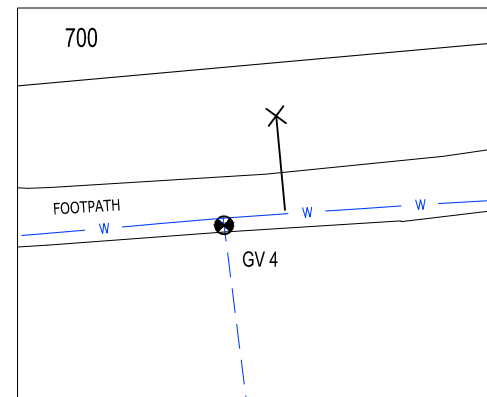
DESIGNED:	DATE:	SIGNED:	PLOT BY:
DRAWN:	DATE:	SIGNED:	PLOT DATE:
CHECKED:	DATE:	SIGNED:	SURVEY BY:
APPROVED:	DATE:	SIGNED:	SURVEY DATE:

ISSUE STATUS:			<b>AS BUILT</b>
PROJECT No:	SCALES:		A1
1850-122585-11	1:500-A1 1:1000-A3		REV
DRAWING No:			<b>A</b>
<b>122585-8-AB501</b>			

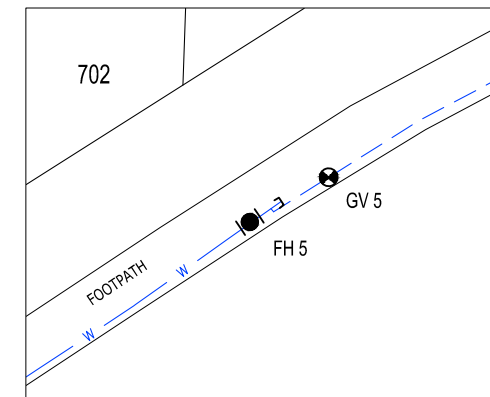
SEE SHEET 1



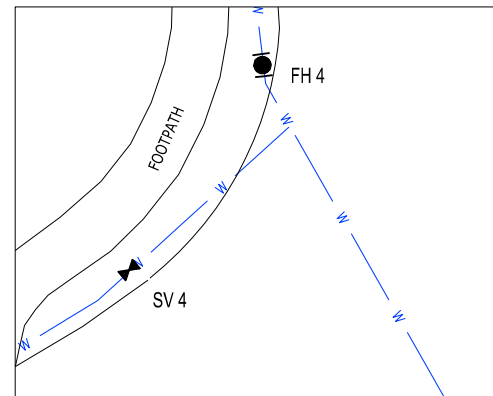
01 WATERMAIN DETAIL  
 AB501 SCALE 1:100-A1



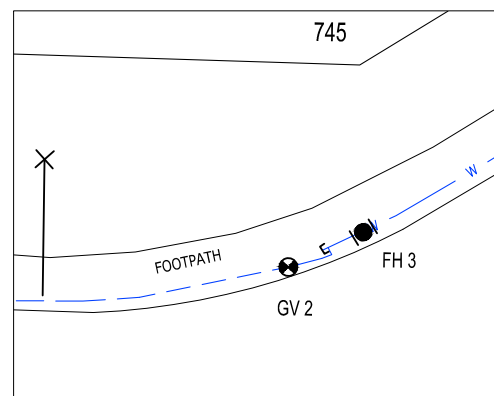
02 WATERMAIN DETAIL  
 AB501 SCALE 1:100-A1



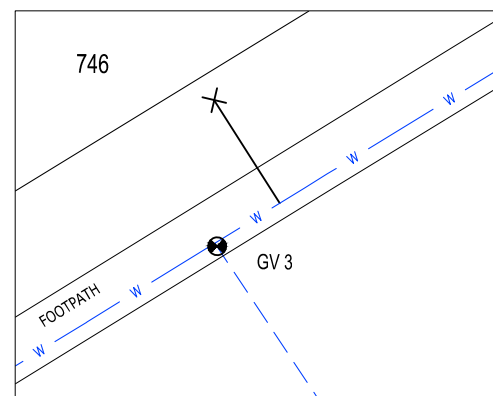
03 WATERMAIN DETAIL  
 AB501 SCALE 1:100-A1



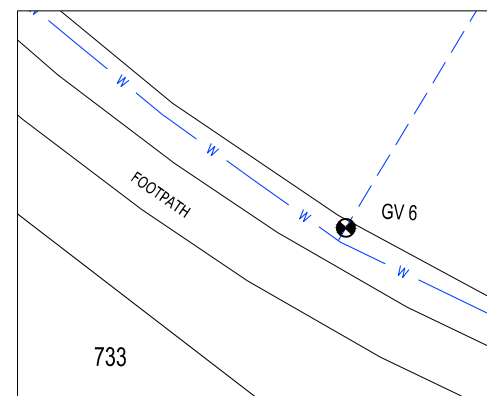
04 WATERMAIN DETAIL  
 AB501 SCALE 1:100-A1



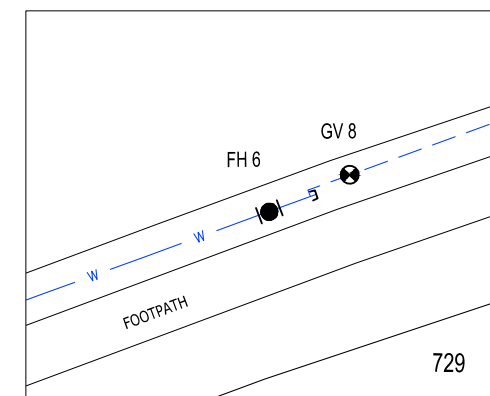
06 WATERMAIN DETAIL  
 AB501 SCALE 1:100-A1



05 WATERMAIN DETAIL  
 AB501 SCALE 1:100-A1



07 WATERMAIN DETAIL  
 AB501 SCALE 1:100-A1



08 WATERMAIN DETAIL  
 AB501 SCALE 1:100-A1

LEGEND

- FIRE HYDRANT
- GATE VALVE
- SLUICE VALVE
- WATER TOBY
- END CAP
- 150mm DIA uPVC WATERMAIN
- EXISTING 250mm DIA AC WATERMAIN
- 50mm DIA MDPE RIDERMAIN

NOTE:

1. Levels are in terms of Wellington Vertical Datum 1953. Origin BM LB51 SO 31708 (ACOP) R.L. = 2,936
2. Coordinates are in terms of NZGD2000 - Wellington Circuit.
3. All dimensions are given in metres unless otherwise stated.

WARNING: Levels, locations and dimensions of water services shown on these plans may not be accurate due to circumstances not notified to Harrison Grierson Consultants Ltd. A physical check should be made on all levels, locations and dimensions before starting design or works.

**HARRISON GRIERSON**  
 CONSULTING ENGINEERS SURVEYORS PLANNERS  
 Level 16 Grand Plimmer Tower 2-6 Gilmer Terrace Wellington Ph 04 385 0005 Fax 04 385 0006

A	AS BUILT ISSUE	GMB	29.10.2009
REF	AMENDMENT	BY	DATE

PROJECT:  
**CARRUS LIMITED  
 AOTEA BLOCK - PORIRUA  
 STAGE 8**

TITLE:  
**WATER RETICULATION  
 AS BUILT PLAN DIAGRAMS  
 SHEET 3 OF 4**

DESIGNED:	DATE:	SIGNED:	PLOT BY:
DRAWN:	DATE:	SIGNED:	PLOT DATE:
CHECKED:	DATE:	SIGNED:	SURVEY BY:
APPROVED:	DATE:	SIGNED:	SURVEY DATE:

ISSUE STATUS:			AS BUILT
PROJECT No:	SCALES:		A1
1850-122585-11	1:100-A1 1:200-A3		
DRAWING No:			REV
122585-8-AB502			A

**NOTE:**

- Levels are in terms of Wellington Vertical Datum 1953. Origin BM LB51 SO 31708 (ACOP) R.L = 2.936
- Coordinates are in terms of NZGD2000 - Wellington Circuit.

WARNING: Levels, locations and dimensions of water services shown on these plans may not be accurate due to circumstances not notified to Harrison Grierson Consultants Ltd. A physical check should be made on all levels, locations and dimensions before starting design or works.




A	AS BUILT ISSUE	GMB	29.10.2009
REF	AMENDMENT	BY	DATE

PROJECT:  
**CARRUS LIMITED  
 AOTEA BLOCK - PORIRUA  
 STAGE 8**

TITLE:  
**WATER RETICULATION  
 AS BUILT PLANS  
 SHEET 4 OF 4**

DESIGNED:	DATE:	SIGNED:	PLOT BY:
			NDH
DRAWN:	DATE:	SIGNED:	PLOT DATE:
GMB	10.2009		02.11.09
CHECKED:	DATE:	SIGNED:	SURVEY BY:
BWH	29.10.09		GMB
APPROVED:	DATE:	SIGNED:	SURVEY DATE:
AMB	29.10.09		10.2009

ISSUE STATUS: **AS BUILT**

PROJECT No:	1850-122585-11	SCALES:	A1
DRAWING No:	<b>122585-8-AB503</b>		REV
			<b>A</b>

LOT CONNECTION COORDINATE TABLE		
	mN	mE
LOT 700	819826.89	406947.19
LOT 701	819831.54	406966.77
LOT 702	819840.70	406984.65
LOT 703	819853.35	407004.97
LOT 704	819860.04	407028.51
LOT 705	819860.17	407051.59
LOT 706	819855.63	407060.06
LOT 707	819852.20	407060.80
LOT 708	819848.88	407061.52
LOT 709	819835.79	407046.29
LOT 710	819839.54	407030.48
LOT 711	819838.44	407007.76
LOT 712	819827.21	406990.58
LOT 713	819817.21	406971.24
LOT 714	819812.68	406948.49
LOT 715	819755.97	406956.93
LOT 716	819753.33	406989.19
LOT 717	819761.27	407010.89
LOT 718	819768.48	407030.70
LOT 719	819774.93	407052.93
LOT 720	819782.90	407075.01
LOT 721	819797.89	407094.38
LOT 722	819803.47	407109.78
LOT 723	819799.87	407117.35
LOT 724	819790.39	407121.19

LOT CONNECTION COORDINATE TABLE		
	mN	mE
LOT 725	819778.33	407113.51
LOT 726	819769.50	407094.10
LOT 727	819760.67	407072.05
LOT 728	819757.12	407052.59
LOT 729	819749.28	407027.98
LOT 730	819743.81	407013.37
LOT 731	819734.33	406983.59
LOT 732	819737.03	406958.58
LOT 733	819749.51	406937.18
LOT 734	819744.31	406897.89
LOT 735	819732.29	406879.91
LOT 736	819721.95	406862.78
LOT 737	819720.61	406853.02
LOT 738	819729.39	406845.98
LOT 739	819737.11	406845.57
LOT 740	819761.34	406836.33
LOT 741	819768.75	406836.38
LOT 742	819774.29	406844.82
LOT 743	819783.71	406860.29
LOT 744	819785.06	406863.51
LOT 745	819745.15	406867.07
LOT 746	819757.74	406893.23
LOT 747	819767.76	406910.38
LOT 748	819804.56	406917.29
LOT 749	819830.78	406914.71

WATERMAIN FITTING COORDINATE TABLE		
	mN	mE
FH 1	819779.01	406639.66
FH 2	819786.73	406790.11
FH 3	819743.61	406875.47
FH 4	819775.77	406923.42
FH 5	819844.91	406996.07
FH 6	819754.77	407032.28
GV 1	819742.95	406847.73
GV 2	819742.29	406873.51
GV 3	819753.87	406893.30
GV 4	819824.00	406945.82
GV 5	819845.87	406998.24
GV 6	819745.81	406948.92
GV 7	819735.17	406991.39
GV 8	819755.73	407033.46
SV 1	819778.88	406639.07
SV 2	819818.60	406919.07
SV 3	819820.17	406919.48
SV 4	819770.71	406920.38
SV 5	819757.76	406934.43