

Stage 8
title plans (final)
16 pages A4 and
16 pages A3



Digital Title Plan - DP 425357

Survey Number DP 425357
Surveyor Reference 1850-122585-11 Aotea Stage 8
Surveyor Brett William Horne
Survey Firm Harrison Grierson Consultants Ltd (Auckland)
Surveyor Declaration I Brett William Horne, being a person entitled to practise as a licensed cadastral surveyor, certify that

(a) The surveys to which this dataset relates are accurate, and were undertaken by me or under my direction in accordance with the Cadastral Survey Act 2002 and the Surveyor-General's Rules for Cadastral Survey 2002/2;
(b) This dataset is accurate, and has been created in accordance with that Act and those Rules.
Declared on 13/01/2010.

Survey Details

Dataset Description Lots 100-103, 110-112, 200-202 & 700-749 being a subdivision of Lot 2 DP 371950
Status Deposited
Land District Wellington
Submitted Date 13/01/2010

Survey Class Class I Cadastral Survey
Survey Approval Date 19/01/2010
Deposit Date 24/02/2010

Territorial Authorities

Porirua City

Comprised In

CT 290892

Created Parcels

Parcels	Parcel Intent	Area	CT Reference
Marked W2 Deposited Plan 425357	Easement		
Marked W3 Deposited Plan 425357	Easement		
Marked E1 Deposited Plan 425357	Easement		
Marked E2 Deposited Plan 425357	Easement		
	Road	0.6322 Ha	
	Road	0.2494 Ha	
	Road	0.1233 Ha	
Lot 103 Deposited Plan 425357	Fee Simple Title	0.0527 Ha	Multiple
Lot 110 Deposited Plan 425357	Vesting on Deposit for Local Purpose Reserve	0.0042 Ha	500074
Lot 111 Deposited Plan 425357	Vesting on Deposit for Local Purpose Reserve	0.0006 Ha	500075
Lot 112 Deposited Plan 425357	Vesting on Deposit for Local Purpose Reserve	0.0024 Ha	500076



Digital Title Plan - DP 425357

Created Parcels

Parcels	Parcel Intent	Area	CT Reference
Lot 200 Deposited Plan 425357	Vesting on Deposit for Local Purpose Reserve	1.7747 Ha	500077
Lot 201 Deposited Plan 425357	Fee Simple Title	0.0824 Ha	500078
Lot 202 Deposited Plan 425357	Fee Simple Title	14.0771 Ha	500079
Lot 700 Deposited Plan 425357	Fee Simple Title	0.0830 Ha	500080
Lot 701 Deposited Plan 425357	Fee Simple Title	0.0859 Ha	500081
Lot 702 Deposited Plan 425357	Fee Simple Title	0.0872 Ha	500082
Lot 703 Deposited Plan 425357	Fee Simple Title	0.0825 Ha	500083
Lot 704 Deposited Plan 425357	Fee Simple Title	0.0883 Ha	500084
Lot 705 Deposited Plan 425357	Fee Simple Title	0.0951 Ha	500085
Lot 706 Deposited Plan 425357	Fee Simple Title	0.1134 Ha	500086
Lot 707 Deposited Plan 425357	Fee Simple Title	0.1089 Ha	500087
Lot 708 Deposited Plan 425357	Fee Simple Title	0.0738 Ha	500088
Lot 709 Deposited Plan 425357	Fee Simple Title	0.0787 Ha	500089
Lot 710 Deposited Plan 425357	Fee Simple Title	0.0685 Ha	500090
Lot 711 Deposited Plan 425357	Fee Simple Title	0.0784 Ha	500091
Lot 712 Deposited Plan 425357	Fee Simple Title	0.0707 Ha	500092
Lot 713 Deposited Plan 425357	Fee Simple Title	0.0663 Ha	500093
Lot 714 Deposited Plan 425357	Fee Simple Title	0.0829 Ha	500094
Lot 715 Deposited Plan 425357	Fee Simple Title	0.0839 Ha	500095
Lot 716 Deposited Plan 425357	Fee Simple Title	0.0694 Ha	500096
Lot 717 Deposited Plan 425357	Fee Simple Title	0.0706 Ha	500097
Lot 718 Deposited Plan 425357	Fee Simple Title	0.0684 Ha	500098
Lot 719 Deposited Plan 425357	Fee Simple Title	0.0682 Ha	500099
Lot 720 Deposited Plan 425357	Fee Simple Title	0.0666 Ha	500100
Lot 721 Deposited Plan 425357	Fee Simple Title	0.0680 Ha	500101
Lot 722 Deposited Plan 425357	Fee Simple Title	0.0799 Ha	500102
Lot 723 Deposited Plan 425357	Fee Simple Title	0.1027 Ha	500103
Lot 724 Deposited Plan 425357	Fee Simple Title	0.0857 Ha	500104
Lot 725 Deposited Plan 425357	Fee Simple Title	0.0863 Ha	500105
Lot 726 Deposited Plan 425357	Fee Simple Title	0.0867 Ha	500106
Lot 727 Deposited Plan 425357	Fee Simple Title	0.0794 Ha	500107
Lot 728 Deposited Plan 425357	Fee Simple Title	0.0775 Ha	500108
Lot 729 Deposited Plan 425357	Fee Simple Title	0.0794 Ha	500109
Lot 730 Deposited Plan 425357	Fee Simple Title	0.0723 Ha	500110
Lot 731 Deposited Plan 425357	Fee Simple Title	0.0678 Ha	500111
Lot 732 Deposited Plan 425357	Fee Simple Title	0.0958 Ha	500112
Lot 733 Deposited Plan 425357	Fee Simple Title	0.0862 Ha	500113
Lot 734 Deposited Plan 425357	Fee Simple Title	0.0754 Ha	500114
Lot 735 Deposited Plan 425357	Fee Simple Title	0.0732 Ha	500115



Digital Title Plan - DP 425357

Created Parcels

Parcels	Parcel Intent	Area	CT Reference
Lot 736 Deposited Plan 425357	Fee Simple Title	0.0686 Ha	500116
Lot 737 Deposited Plan 425357	Fee Simple Title	0.0731 Ha	500117
Lot 738 Deposited Plan 425357	Fee Simple Title	0.0658 Ha	500118
Lot 739 Deposited Plan 425357	Fee Simple Title	0.0687 Ha	500119
Lot 740 Deposited Plan 425357	Fee Simple Title	0.0652 Ha	500120
Lot 741 Deposited Plan 425357	Fee Simple Title	0.1170 Ha	500121
Lot 742 Deposited Plan 425357	Fee Simple Title	0.0797 Ha	500122
Lot 743 Deposited Plan 425357	Fee Simple Title	0.0690 Ha	500123
Lot 744 Deposited Plan 425357	Fee Simple Title	0.0862 Ha	500124
Lot 745 Deposited Plan 425357	Fee Simple Title	0.0700 Ha	500125
Lot 746 Deposited Plan 425357	Fee Simple Title	0.0667 Ha	500126
Lot 747 Deposited Plan 425357	Fee Simple Title	0.0654 Ha	500127
Lot 748 Deposited Plan 425357	Fee Simple Title	0.0639 Ha	500128
Lot 749 Deposited Plan 425357	Fee Simple Title	0.0876 Ha	500129
Marked D9 Deposited Plan 425357	Easement		
Marked D10 Deposited Plan 425357	Easement		
Marked BR1 Deposited Plan 425357	Land Covenant		
Marked BR2 Deposited Plan 425357	Land Covenant		
Marked BR3 Deposited Plan 425357	Land Covenant		
Marked BR4 Deposited Plan 425357	Land Covenant		
Marked BR5 Deposited Plan 425357	Land Covenant		
Marked BR6 Deposited Plan 425357	Land Covenant		
Marked BR7 Deposited Plan 425357	Land Covenant		
Marked BR8 Deposited Plan 425357	Land Covenant		
Marked BR9 Deposited Plan 425357	Land Covenant		
Marked BR10 Deposited Plan 425357	Land Covenant		
Marked BR11 Deposited Plan 425357	Land Covenant		
Marked BR12 Deposited Plan 425357	Land Covenant		
Marked BR13 Deposited Plan 425357	Land Covenant		
Marked BR14 Deposited Plan 425357	Land Covenant		
Marked BR15 Deposited Plan 425357	Land Covenant		
Marked BR16 Deposited Plan 425357	Land Covenant		
Marked BR17 Deposited Plan 425357	Land Covenant		
Marked BR18 Deposited Plan 425357	Land Covenant		
Marked BR19 Deposited Plan 425357	Land Covenant		
Marked BR20 Deposited Plan 425357	Land Covenant		
Marked BR21 Deposited Plan 425357	Land Covenant		
Marked BR22 Deposited Plan 425357	Land Covenant		
Marked BR23 Deposited Plan 425357	Land Covenant		
Marked BR24 Deposited Plan 425357	Land Covenant		



Digital Title Plan - DP 425357

Created Parcels

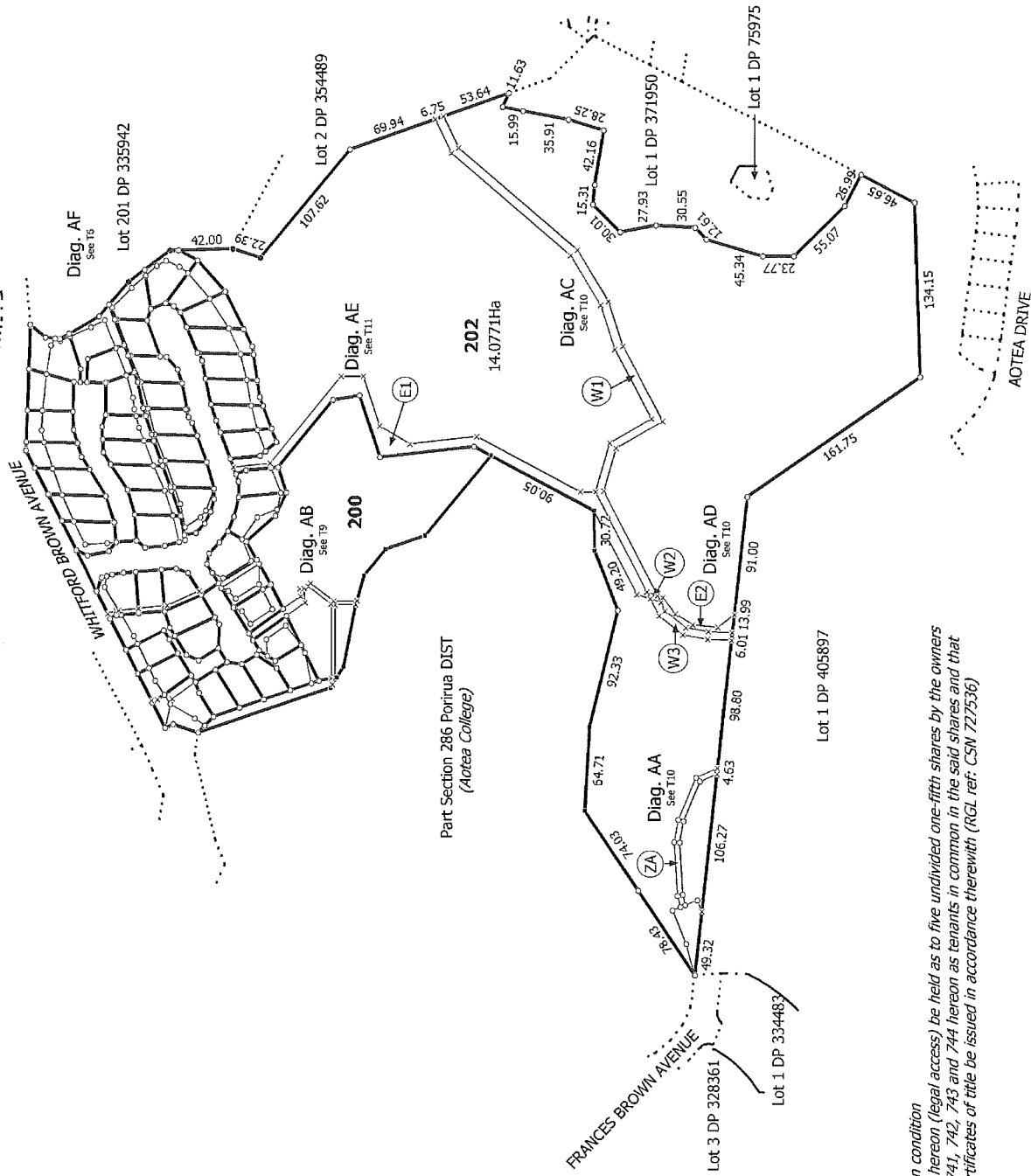
Parcels	Parcel Intent	Area	CT Reference
Marked BR25 Deposited Plan 425357	Land Covenant		
Marked BR26 Deposited Plan 425357	Land Covenant		
Marked BR27 Deposited Plan 425357	Land Covenant		
Marked BR28 Deposited Plan 425357	Land Covenant		
Marked BR29 Deposited Plan 425357	Land Covenant		
Marked BR30 Deposited Plan 425357	Land Covenant		
Marked BR31 Deposited Plan 425357	Land Covenant		
Marked BR32 Deposited Plan 425357	Land Covenant		
Marked BR33 Deposited Plan 425357	Land Covenant		
Marked BR34 Deposited Plan 425357	Land Covenant		
Marked BR35 Deposited Plan 425357	Land Covenant		
Marked BR36 Deposited Plan 425357	Land Covenant		
Marked BR37 Deposited Plan 425357	Land Covenant		
Marked BR38 Deposited Plan 425357	Land Covenant		
Marked BR39 Deposited Plan 425357	Land Covenant		
Marked BR40 Deposited Plan 425357	Land Covenant		
Marked BR41 Deposited Plan 425357	Land Covenant		
Marked BR42 Deposited Plan 425357	Land Covenant		
Marked BR43 Deposited Plan 425357	Land Covenant		
Marked BR44 Deposited Plan 425357	Land Covenant		
Marked BR45 Deposited Plan 425357	Land Covenant		
Marked BR46 Deposited Plan 425357	Land Covenant		
Marked BR47 Deposited Plan 425357	Land Covenant		
Marked BR48 Deposited Plan 425357	Land Covenant		
Marked RW1 Deposited Plan 425357	Easement		
Marked D5 Deposited Plan 425357	Easement		
Marked D1 Deposited Plan 425357	Easement		
Marked D2 Deposited Plan 425357	Easement		
Marked D3 Deposited Plan 425357	Easement		
Marked D4 Deposited Plan 425357	Easement		
Marked D6 Deposited Plan 425357	Easement		
Marked D7 Deposited Plan 425357	Easement		
Marked D8 Deposited Plan 425357	Easement		
Marked W1 Deposited Plan 425357	Easement		
Marked ZA Deposited Plan 425357	Easement		
Total Area		20.9529 Ha	

Memorandum of Easements						
(Pursuant to s243 Resource Management Act 1991)						
Purpose	Shown	Servient Tenement	Dominant Tenement			
Right of Way Right to convey water, electricity, gas, telecommunications and computer media	RW1	Lot 103 hereon	Lots 740, 741, 742, 743 & 744 hereon			
Memorandum of Easements in Gross						
(Pursuant to s243 Resource Management Act 1991)						
Purpose	Shown	Servient Tenement	Grantee			
Right to drain sewage and water	BR42	Lot 741 hereon	Porirua City Council			
	BR47	Lot 749 hereon				
	D1	Lot 747 hereon				
	D2	Lot 748 hereon				
	D3	Lot 749 hereon				
	D4	Lot 741 hereon				
	D5	Lot 744 hereon				
	D9	Lot 111 hereon				
	D10	Lot 112 hereon				
	Right to drain water	RW1			Lot 103 hereon	Porirua City Council
BR43		Lot 742 hereon				
D6		Lot 200 hereon				
D8						
D7	Lot 201 hereon					
Right to convey electricity	E1	Lot 202 hereon	WEL Networks Limited			
	E2					
	W2					
Right to convey telecommunications and computer media	E1		Lot 202 hereon	Telecom New Zealand Limited		
	E2					
	W2					
Right to convey water	W1			Lot 202 hereon	Wellington Regional Council	
	W2					
	W3					
Schedule of Existing Easements in Gross						
Purpose/Interest	Shown	Servient Tenement			Created By	Grantee
Right of Way	ZA (J, K, M, N on DP 371950)	Lot 202 hereon			T.861524.1	Porirua City Council
Schedule of Easements to be Surrendered						
Purpose/Interest	Shown	Servient Tenement	Created By			
Right to drain water	O, P, Q on DP 371950	Lot 2 on DP 371950	B.686066.3			
Right to convey water	E, H, G on DP 371950		B.557646.1			

N:\1850\122585_11\400 Tech\LT survey\Stage B Easement Schedule - RevB.xls



Diag. A



*Amalgamation condition
That Lot 103 hereon (legal access) be held as to five undivided one-fifth shares by the owners
of Lots 740, 741, 742, 743 and 744 hereon as tenants in common in the said shares and that
individual certificates of title be issued in accordance therewith (RGL ref: CSN 72/536)*

T 1/11

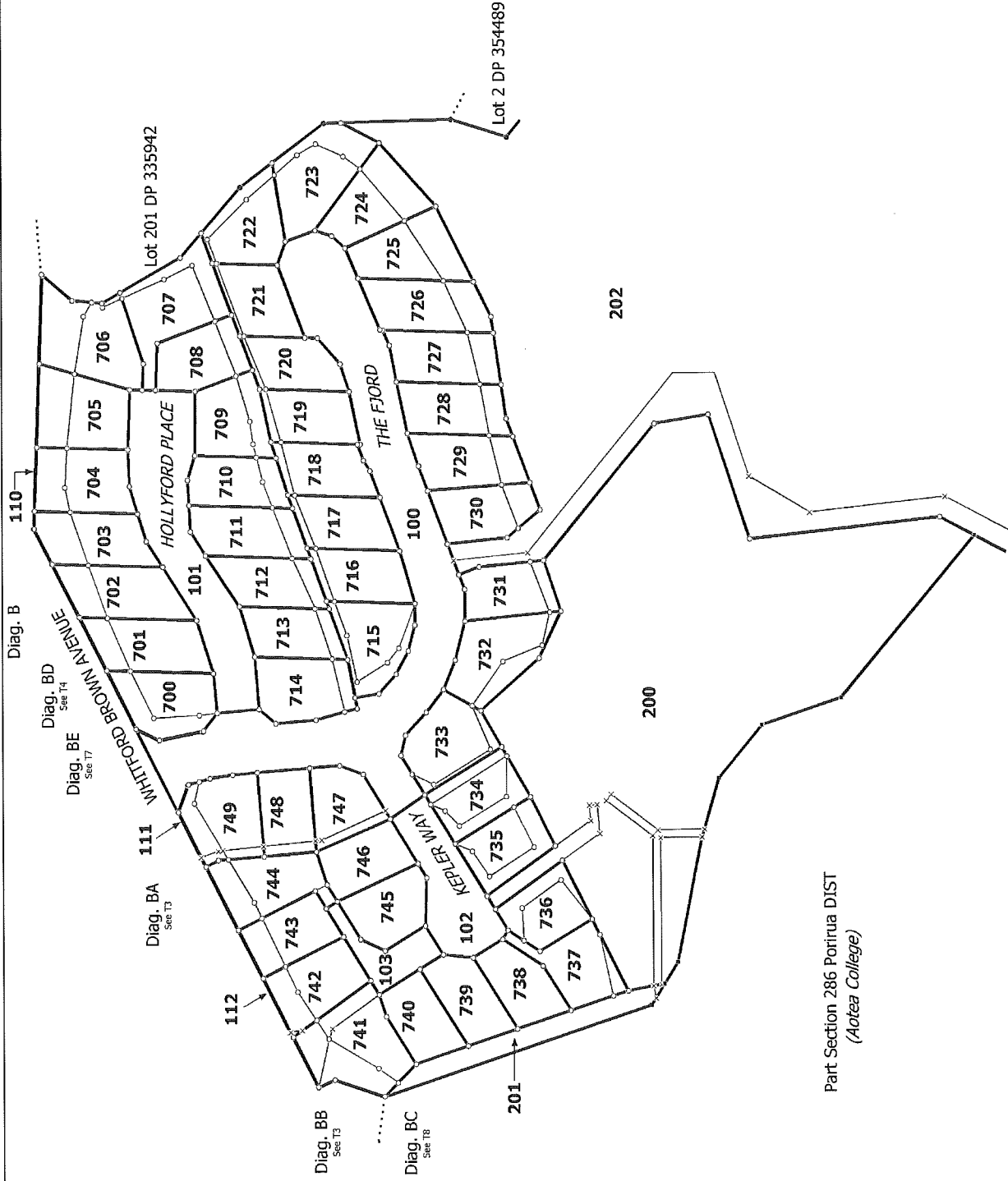
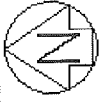
Land District: Wellington
Digitally Generated Plan
Generated on: 12/03/2010 10:01 am Page 6 of 16

Lots 100-103, 110-112, 200-202 & 700-749 being a subdivision of Lot 2 DP 371950

Surveyor: Brett William Home
Firm: Harrison Grierson Consultants Ltd (A)

**Digital Title Plan
DP 425357**

Deposited on: 24/02/2010



Part Section 286 Porirua DIST
(Aotea College)

T 2/11

Land District: Wellington

Digitally Generated Plan

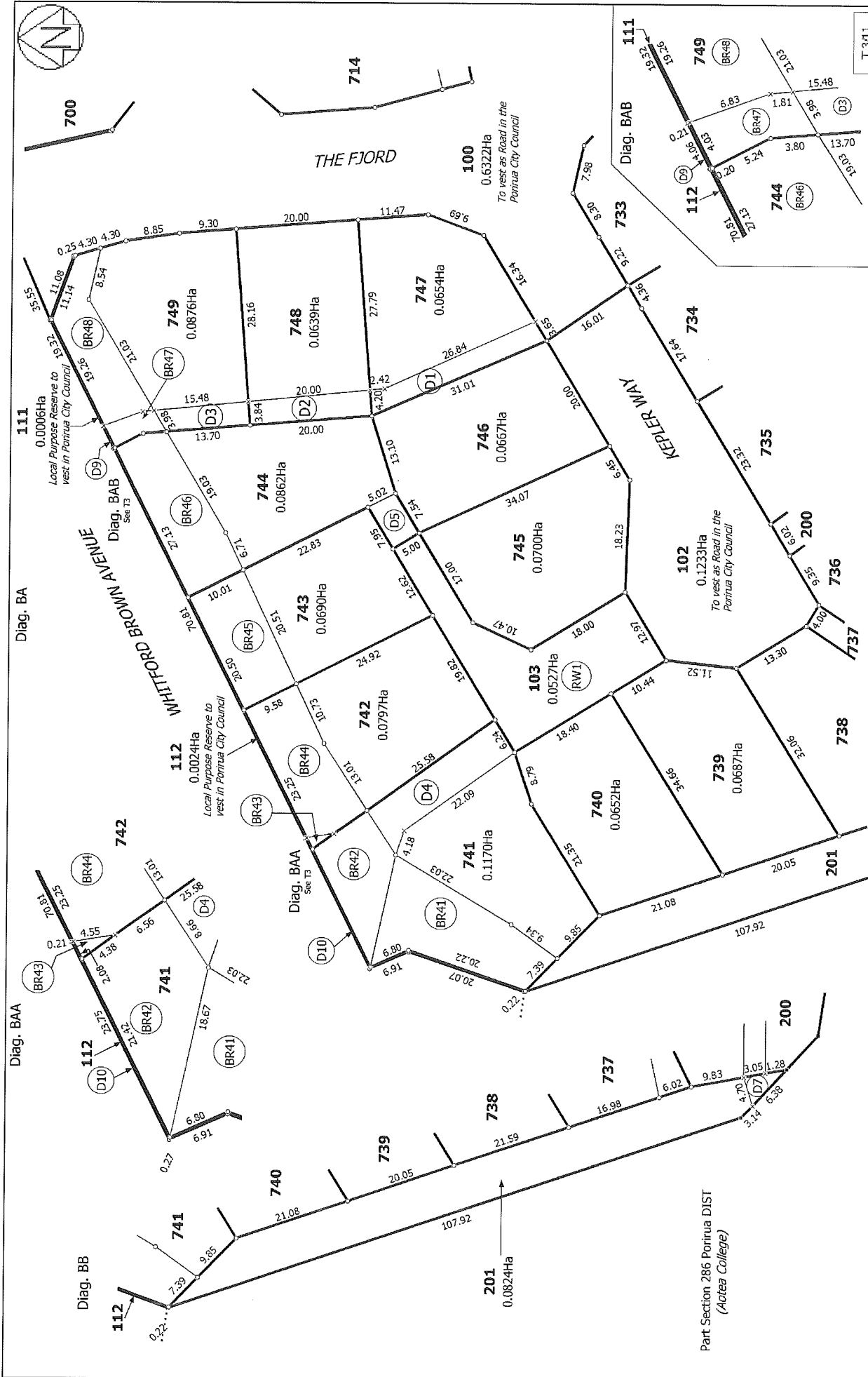
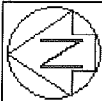
Generated on: 12/03/2010 10:01 am Page 7 of 16

Lots 100-103, 110-112, 200-202 & 700-749 being a subdivision of Lot 2 DP
371950

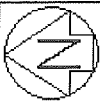
Surveyor: Brett William Home
Firm: Harrison Grierson Consultants Ltd (Au)

Digital Title Plan
DP 425357

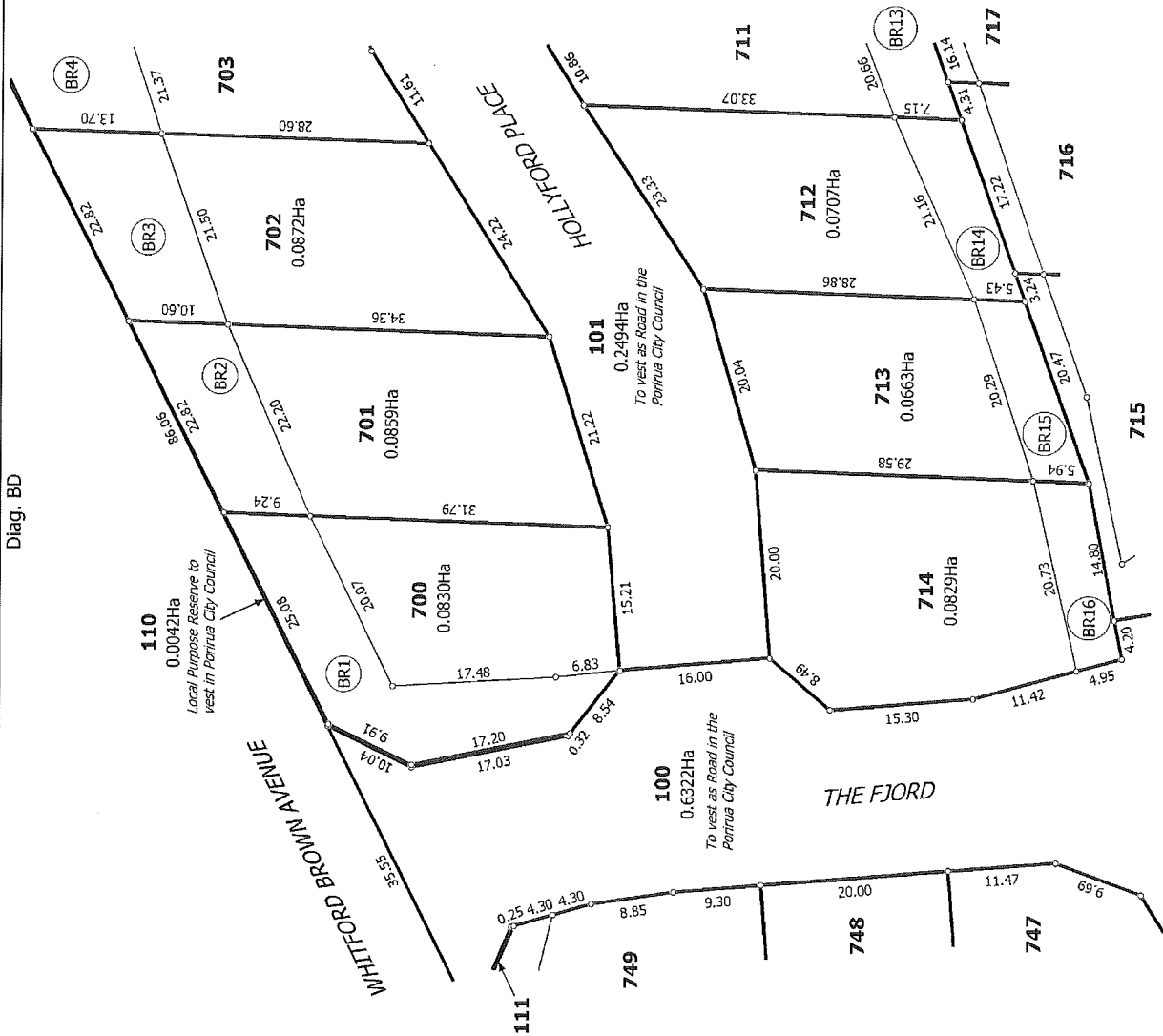
Deposited on: 24/02/2010



Land District: Wellington	Lots 100-103, 110-112, 200-202 & 700-749 being a subdivision of Lot 2 DP 371950	Digital Title Plan DP 425357	Deposited on: 24/02/2010
Digitally Generated Plan Generated on: 12/03/2010 10:01 am Page 8 of 15	Surveyor: Brett William Home Firm: Harrison Grierson Consultants Ltd (A)	T 3/11	



Diag. BD



T 4/11

Digital Title Plan
DP 425357

Deposited on: 24/02/2010

Surveyor: Brett William Home
Firm: Harrison Grierson Consultants Ltd (A)

Lots 100-103, 110-112, 200-202 & 700-749 being a subdivision of Lot 2 DP
371950

Land District: Wellington

Digitally Generated Plan
Generated on: 12/03/2010 10:07am Page 9 of 16



Diag. C

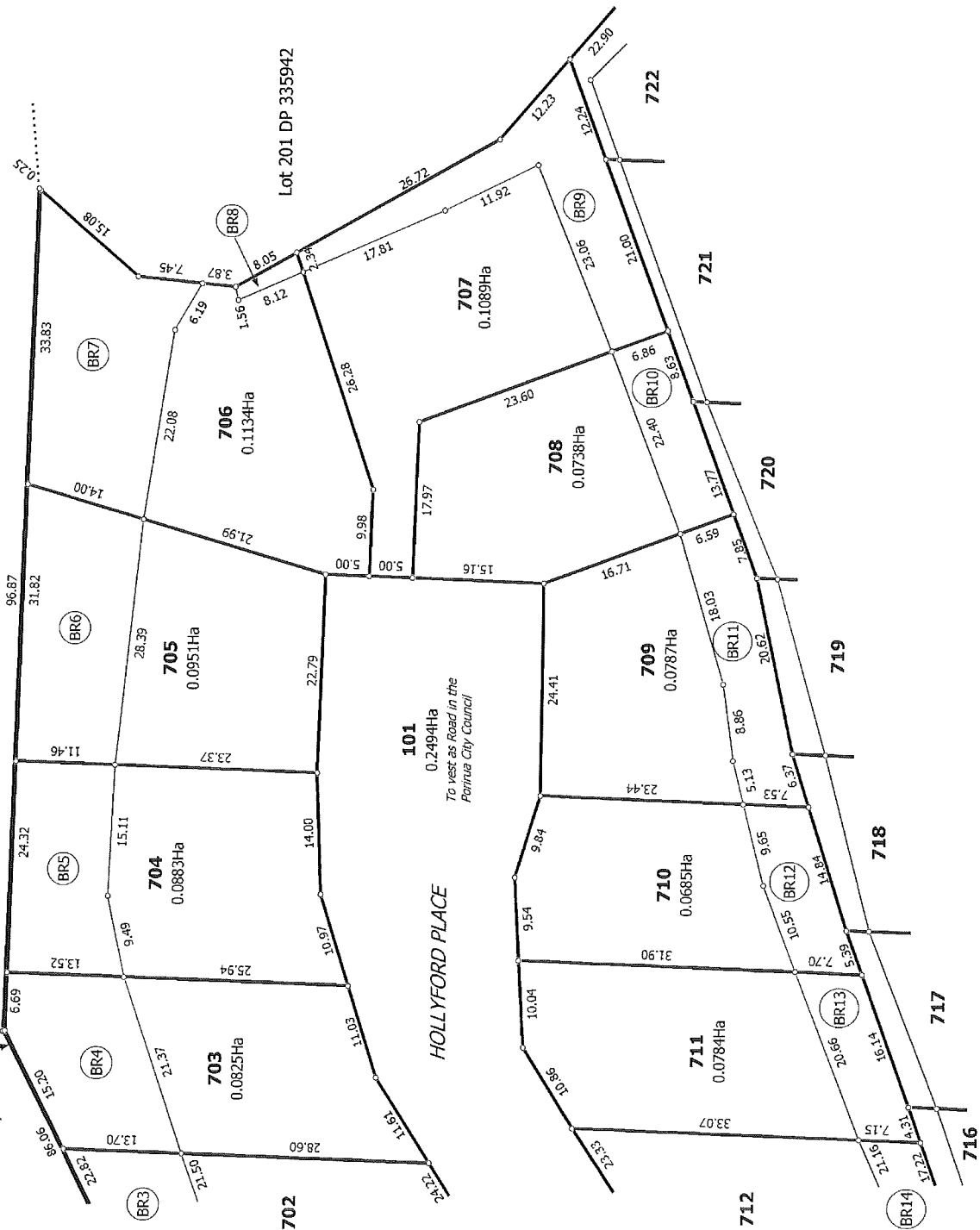
WHITFORD BROWN AVENUE

HOLLYFORD PLACE

Lot 201 DP 335942

110

0.0042Ha
Local Purpose Reserve to
vest in Porirua City Council



T 5/11

Land District: Wellington

Digitally Generated Plan

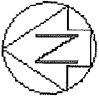
Generated on: 12/03/2010 10:07:01 am Page 10 of 16

Lots 100-103, 110-112, 200-202 & 700-749 being a subdivision of Lot 2 DP 371950

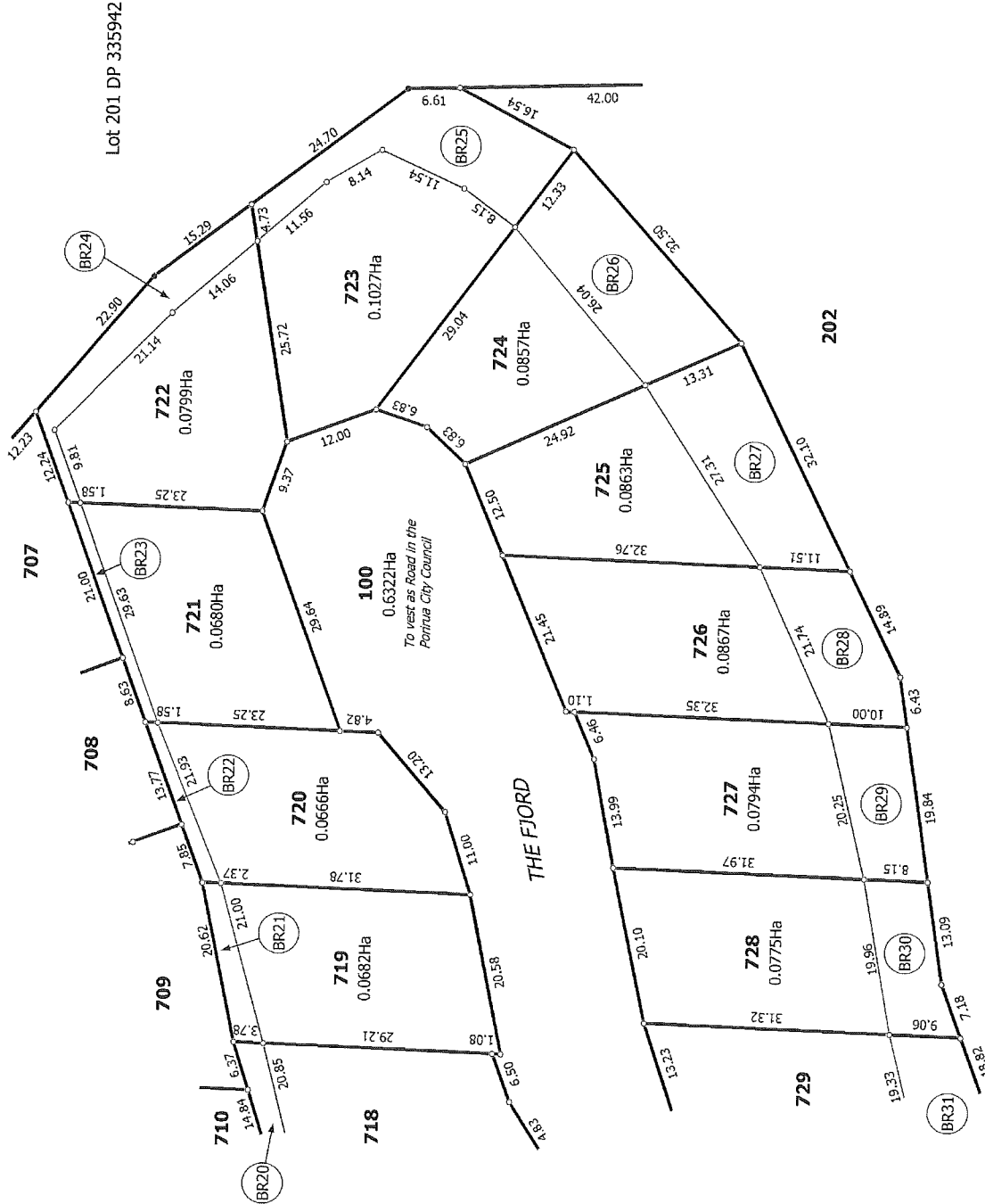
Surveyor: Brett William Horne
Firm: Harrison Grierson Consultants Ltd (Au.

Digital Title Plan
DP 425357

Deposited on: 24/02/2010



Diag. AF



T 6/11

Digital Title Plan
DP 425357

Deposited on: 24/02/2010

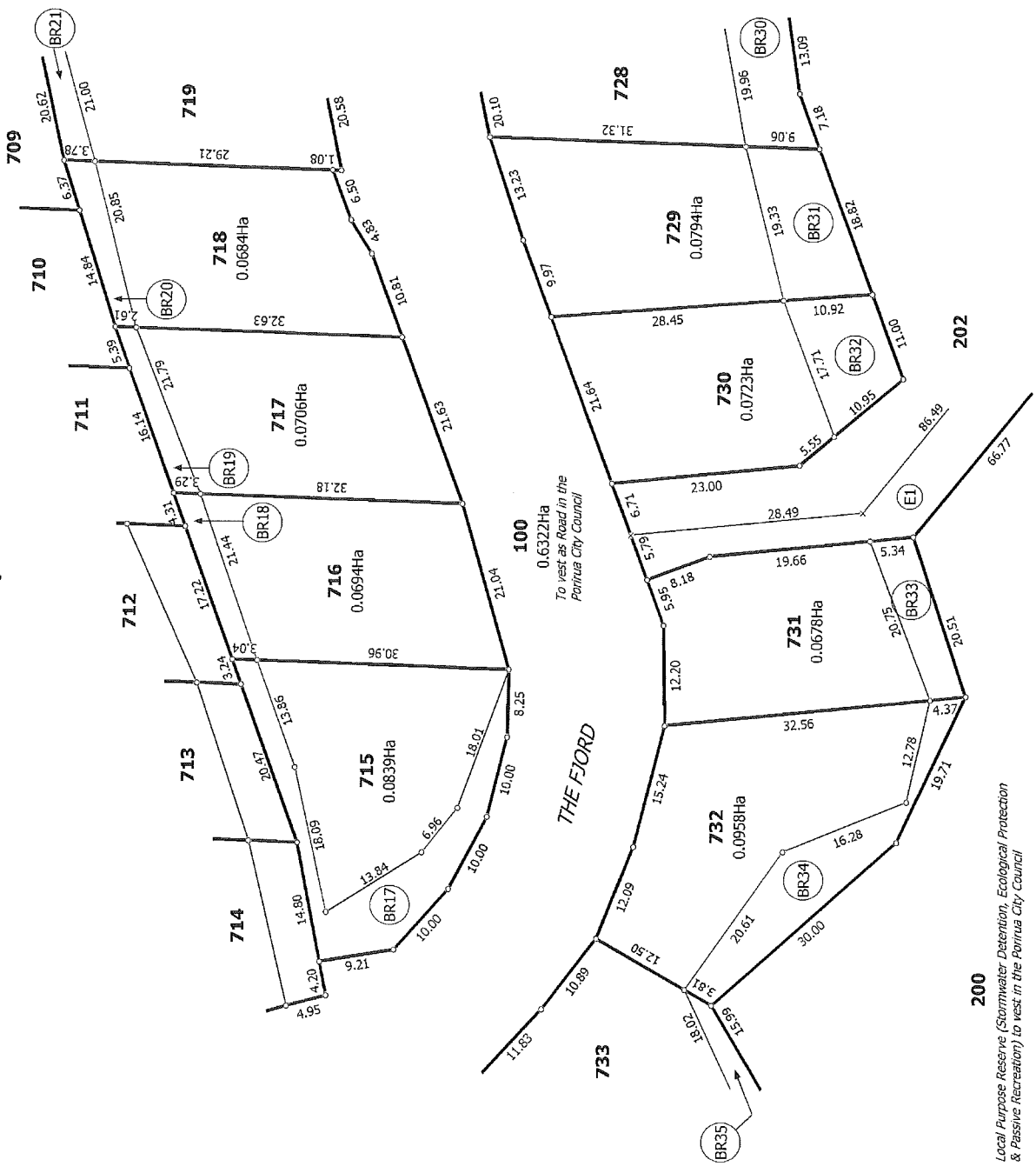
Surveyor: Brett William Home
Firm: Harrison Grierson Consultants Ltd (A)

Lots 100-103, 110-112, 200-202 & 700-749 being a subdivision of Lot 2 DP
371950

Land District: Wellington
Digitally Generated Plan
Generated on: 12/03/2010 10:01:01 am Page 11 of 16



Diag. BE



200
 Local Purpose Reserve (Stormwater Detention, Ecological Protection
 & Passive Recreation) to vest in the Porirua City Council

T 7/11

Digital Title Plan
 DP 425357

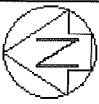
Surveyor: Erett William Home
 Firm: Harrison Grierson Consultants Ltd (A/C)

Lots 100-103, 110-112, 200-202 & 700-749 being a subdivision of Lot 2 DP
 371950

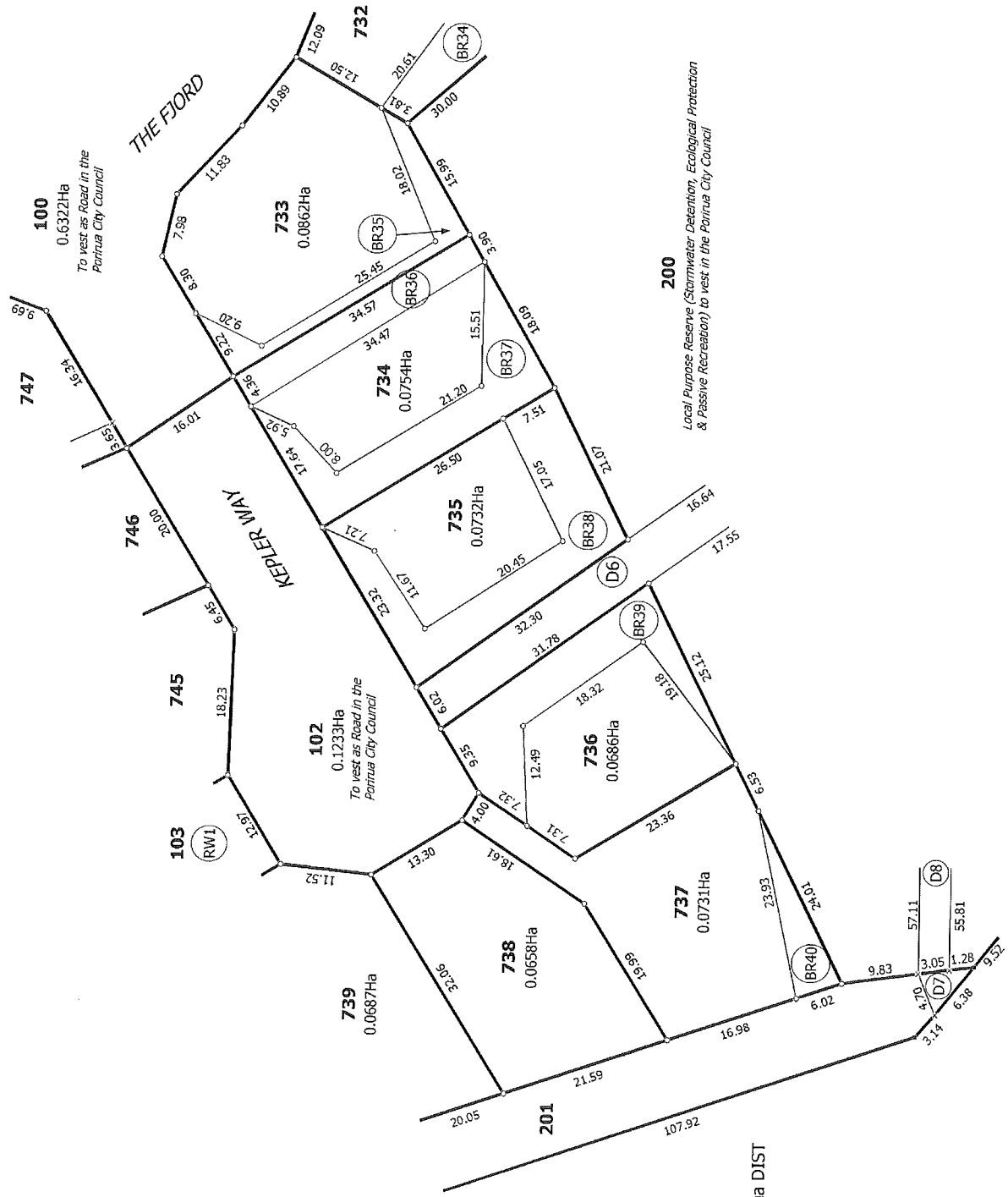
Land District: Wellington

Digitally Generated Plan
 Generated on: 12/03/2010 10:01 am Page 12 of 16

Deposited on: 24/02/2010



Diag. BC



Part Section 286 Porirua DIST
(Aotea College)

T 8/11

Digital Title Plan
DP 425357
Deposited on: 24/02/2010

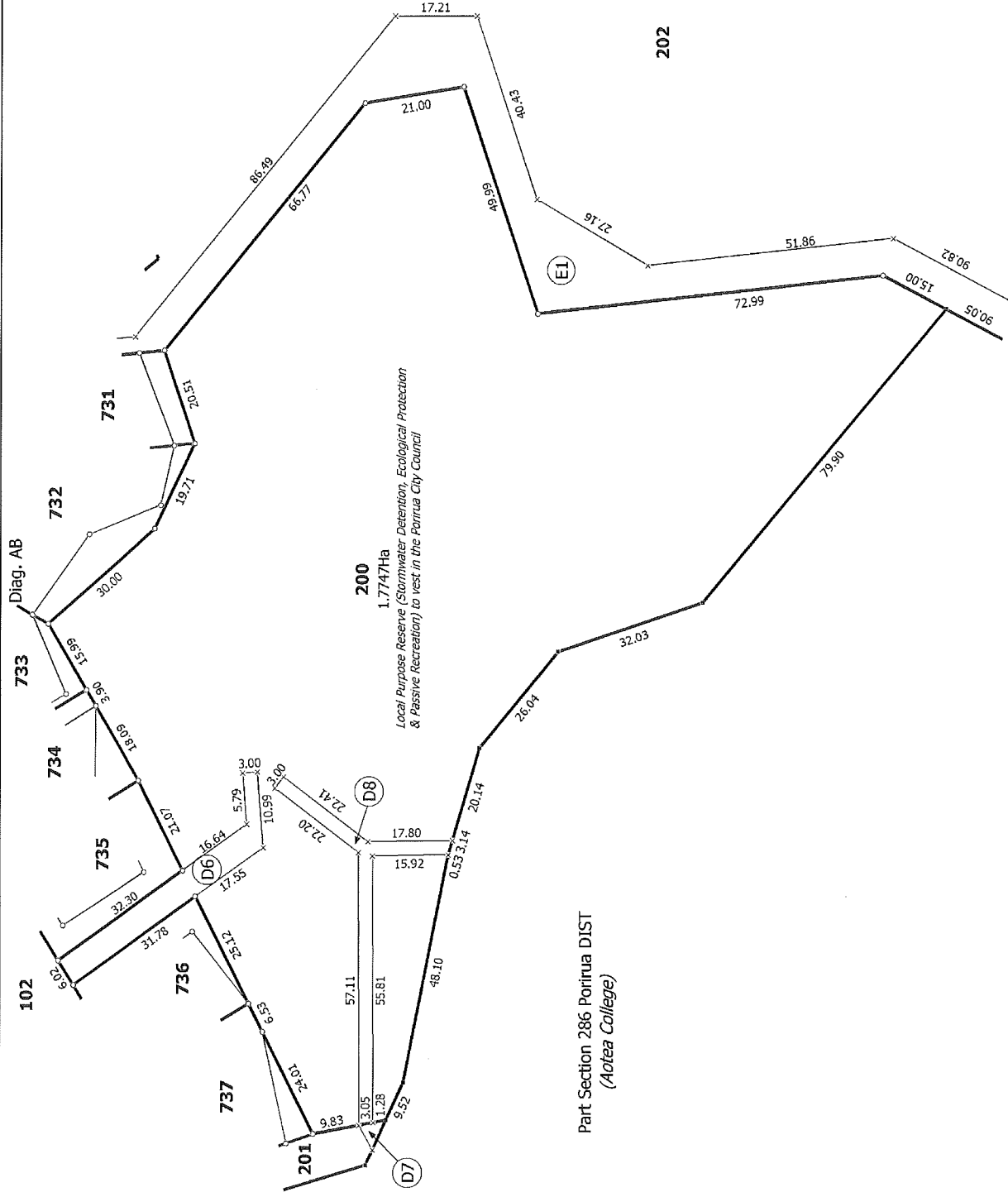
Surveyor: Brett William Home
Firm: Harrison Grierson Consultants Ltd (A.)

Lots 100-103, 110-112, 200-202 & 700-749 being a subdivision of Lot 2 DP 371950

Land District: Wellington
Digitally Generated Plan
Generated on: 12/03/2010 10:01 am Page 13 of 16



T 9/11



Land District: Wellington

Digitally Generated Plan

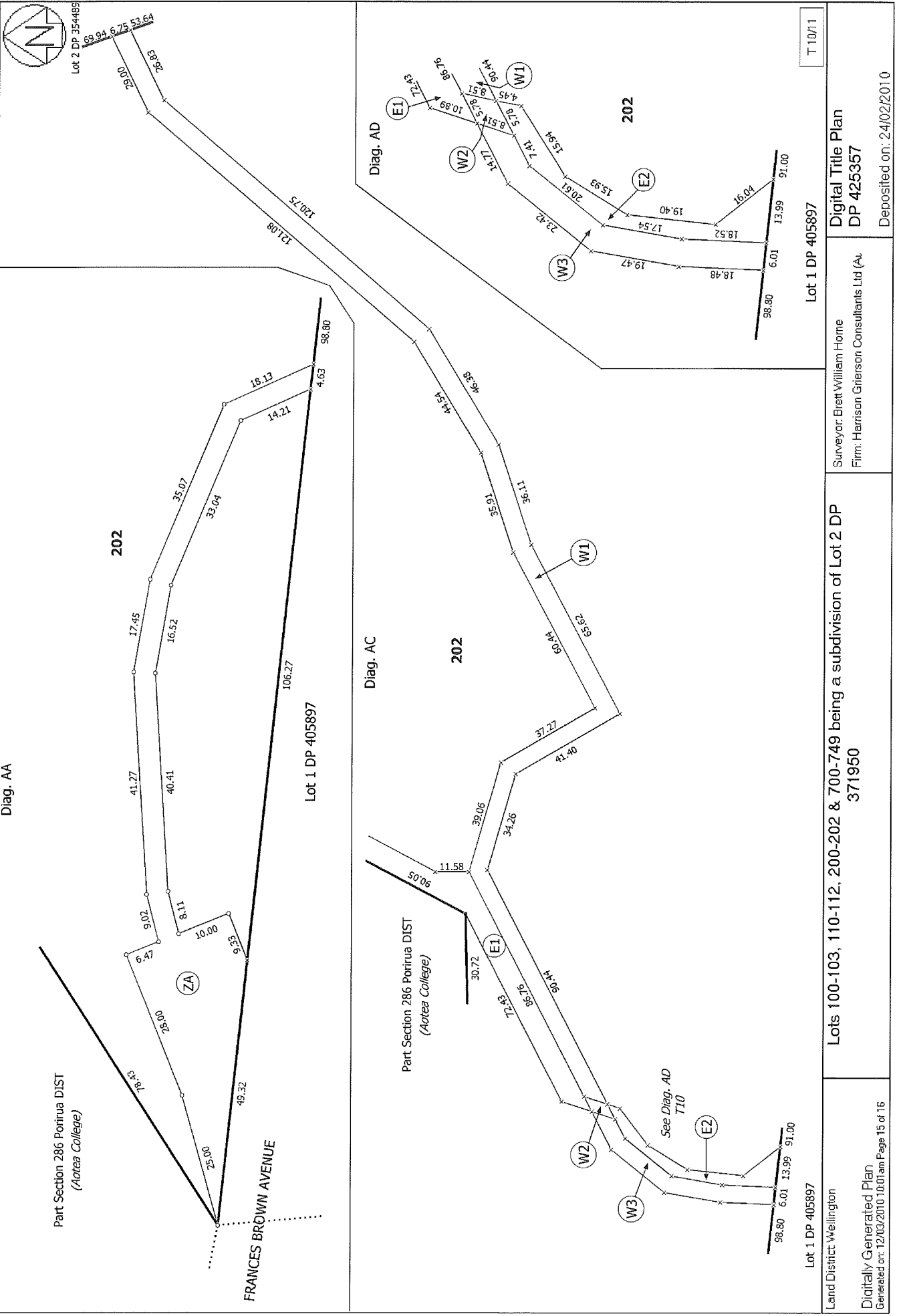
Generated on: 12/03/2010 10:00am Page 14 of 16

Lots 100-103, 110-112, 200-202 & 700-749 being a subdivision of Lot 2 DP
371950

Surveyor: Brett William Horne
Firm: Harrison Grierson Consultants Ltd (A/c)

Digital Title Plan
DP 425357

Deposited on: 24/02/2010



T 10/11

Lot 1 DP 405897

Digital Title Plan
DP 425357

Surveyor: Brett William Home
Firm: Harrison Grierson Consultants Ltd (A/C)

Deposited on: 24/02/2010

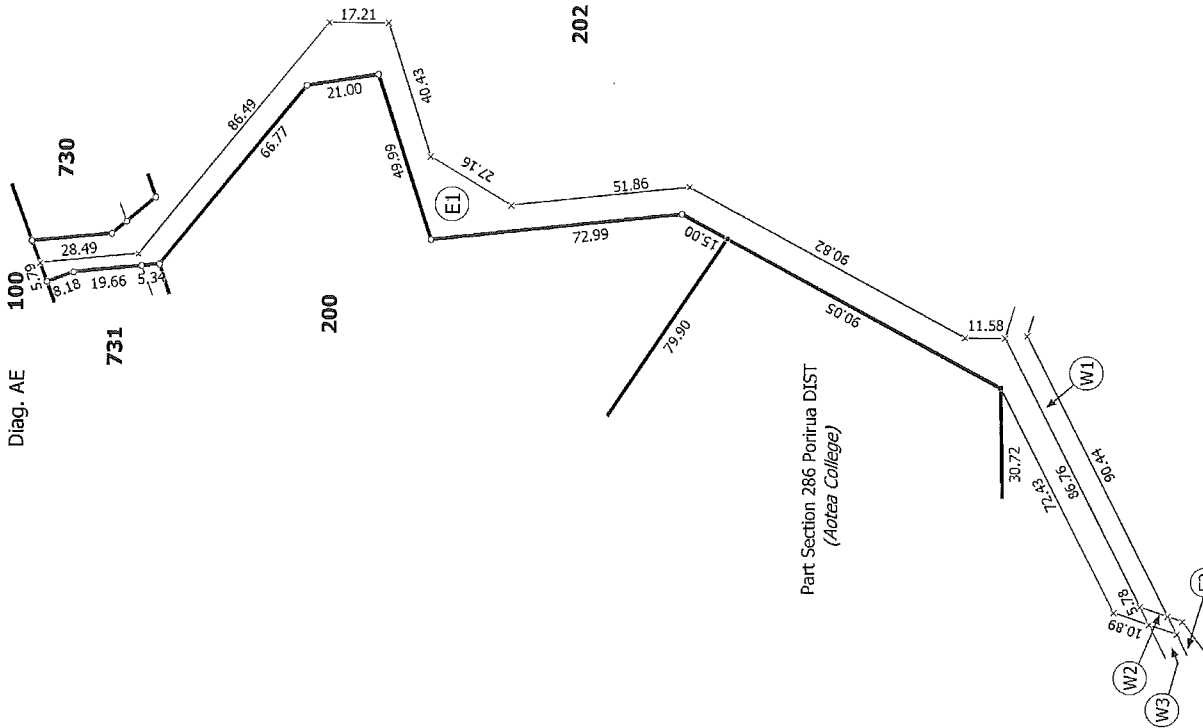
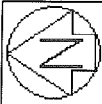
Lots 100-103, 110-112, 200-202 & 700-749 being a subdivision of Lot 2 DP 371950

Lot 1 DP 405897

Land District: Wellington

Digitally Generated Plan

Generated on: 12/02/2010 10:01 am Page 15 of 16



T 11/11

Digital Title Plan
DP 425357

Deposited on: 24/02/2010

Surveyor: Brett William Home
Firm: Harrison Grierson Consultants Ltd (A)

Lots 100-103, 110-112, 200-202 & 700-749 being a subdivision of Lot 2 DP
371950

Land District Wellington

Digitally Generated Plan
Generated on: 12/03/2010 10:01am Page 16 of 16