



Digital Survey Plan - DP 405897

Survey Number	DP 405897
Surveyor Reference	1850-000633-01 Aotea Stage 7
Surveyor	Brett William Horne
Survey Firm	Harrison Grierson Consultants Ltd (Auckland)
Surveyor Declaration	I Brett William Horne, being a person entitled to practise as a licensed cadastral surveyor, certify that - (a) The surveys to which this dataset relates are accurate, and were undertaken by me or under my direction in accordance with the Cadastral Survey Act 2002 and the Surveyor-General's Rules for Cadastral Survey 2002/2; (b) This dataset is accurate, and has been created in accordance with that Act and those Rules. Declared on 30/06/2008.

Survey Details

Dataset Description	Lots 1,103-105,112,203,600-642,653-671,691-699 being a subdivision of Lot 1 DP 394178		
Purpose	LT Subdivision		
Status	Deposited	Type	Survey
Land District	Wellington	Survey Class	Class I Cadastral Survey
Coordinate System	Wellington 2000		

Survey Dates

Surveyed Date	19/05/2008	Certified Date	30/06/2008
Submitted Date	30/06/2008 11:36:10	Survey Approval Date	09/07/2008
Deposit Date	01/07/2008		

Referenced Surveys

Survey Number	Land District	Bearing Correction
DP 387624	Wellington	0°00'00"
DP 53734	Wellington	0°00'00"
DP 394178	Wellington	0°00'00"

Territorial Authorities

Porirua City

Comprised In

CT 376689

Created Parcels

Parcels	Parcel Intent	Area	CT Reference
Marked S Deposited Plan 405897	Land Covenant		
Marked AB Deposited Plan 405897	Easement		
Marked AC Deposited Plan 405897	Easement		
Marked AD Deposited Plan 405897	Easement		



Digital Survey Plan - DP 405897

Created Parcels

Parcels	Parcel Intent	Area	CT Reference
Marked AE Deposited Plan 405897	Easement		
Marked AF Deposited Plan 405897	Easement		
Marked AG Deposited Plan 405897	Easement		
Marked AM Deposited Plan 405897	Easement		
Marked AN Deposited Plan 405897	Easement		
Marked AO Deposited Plan 405897	Easement		
Marked AP Deposited Plan 405897	Easement		
Marked AQ Deposited Plan 405897	Easement		
Marked AT Deposited Plan 405897	Easement		
Marked M Deposited Plan 405897	Land Covenant		
Marked O Deposited Plan 405897	Land Covenant		
Marked Q Deposited Plan 405897	Land Covenant		
Marked R Deposited Plan 405897	Land Covenant		
Marked DA Deposited Plan 405897	Easement		
Marked BR Deposited Plan 405897	Easement		
Marked BG Deposited Plan 405897	Easement		
Marked AX Deposited Plan 405897	Easement		
Marked AY Deposited Plan 405897	Easement		
Marked AZ Deposited Plan 405897	Easement		
Marked BZ Deposited Plan 405897	Easement		
Marked Y Deposited Plan 405897	Land Covenant		
Lot 1 Deposited Plan 405897	Fee Simple Title	45.9352 Ha	420618
Part Section 286 Porirua District	Fee Simple Title	0.5419 Ha	
Lot 203 Deposited Plan 405897	Vesting on Deposit for Recreation Reserve (Territorial Authority)	3.2597 Ha	420619
Lot 103 Deposited Plan 405897	Vesting on Deposit for Road	0.6823 Ha	
Lot 104 Deposited Plan 405897	Vesting on Deposit for Road	0.4824 Ha	
Lot 105 Deposited Plan 405897	Vesting on Deposit for Road	0.3038 Ha	
Lot 112 Deposited Plan 405897	Fee Simple Title	0.0225 Ha	Multiple
Lot 600 Deposited Plan 405897	Fee Simple Title	0.0606 Ha	420620
Lot 601 Deposited Plan 405897	Fee Simple Title	0.0603 Ha	420621
Lot 602 Deposited Plan 405897	Fee Simple Title	0.0607 Ha	420622
Lot 603 Deposited Plan 405897	Fee Simple Title	0.0601 Ha	420623
Lot 604 Deposited Plan 405897	Fee Simple Title	0.0599 Ha	420624
Lot 605 Deposited Plan 405897	Fee Simple Title	0.0599 Ha	420625
Lot 606 Deposited Plan 405897	Fee Simple Title	0.0599 Ha	420626
Lot 607 Deposited Plan 405897	Fee Simple Title	0.0599 Ha	420627



Digital Survey Plan - DP 405897

Created Parcels

Parcels	Parcel Intent	Area	CT Reference
Lot 608 Deposited Plan 405897	Fee Simple Title	0.0651 Ha	420628
Lot 609 Deposited Plan 405897	Fee Simple Title	0.0748 Ha	420629
Lot 610 Deposited Plan 405897	Fee Simple Title	0.0676 Ha	420630
Lot 611 Deposited Plan 405897	Fee Simple Title	0.0679 Ha	420631
Lot 612 Deposited Plan 405897	Fee Simple Title	0.0713 Ha	420632
Lot 613 Deposited Plan 405897	Fee Simple Title	0.0716 Ha	420633
Lot 614 Deposited Plan 405897	Fee Simple Title	0.0717 Ha	420634
Lot 615 Deposited Plan 405897	Fee Simple Title	0.0743 Ha	420635
Lot 616 Deposited Plan 405897	Fee Simple Title	0.0965 Ha	420636
Lot 617 Deposited Plan 405897	Fee Simple Title	0.0664 Ha	420637
Lot 618 Deposited Plan 405897	Fee Simple Title	0.0773 Ha	420638
Lot 619 Deposited Plan 405897	Fee Simple Title	0.0681 Ha	420639
Lot 620 Deposited Plan 405897	Fee Simple Title	0.0711 Ha	420640
Lot 621 Deposited Plan 405897	Fee Simple Title	0.0665 Ha	420641
Lot 622 Deposited Plan 405897	Fee Simple Title	0.0674 Ha	420642
Marked BU Deposited Plan 405897	Easement		
Lot 623 Deposited Plan 405897	Fee Simple Title	0.0742 Ha	420643
Lot 624 Deposited Plan 405897	Fee Simple Title	0.0925 Ha	420644
Lot 625 Deposited Plan 405897	Fee Simple Title	0.0572 Ha	420645
Lot 626 Deposited Plan 405897	Fee Simple Title	0.0597 Ha	420646
Lot 627 Deposited Plan 405897	Fee Simple Title	0.0684 Ha	420647
Lot 628 Deposited Plan 405897	Fee Simple Title	0.0707 Ha	420648
Lot 629 Deposited Plan 405897	Fee Simple Title	0.0659 Ha	420649
Lot 630 Deposited Plan 405897	Fee Simple Title	0.0665 Ha	420650
Lot 631 Deposited Plan 405897	Fee Simple Title	0.0650 Ha	420651
Lot 632 Deposited Plan 405897	Fee Simple Title	0.0631 Ha	420652
Lot 633 Deposited Plan 405897	Fee Simple Title	0.0603 Ha	420653
Lot 634 Deposited Plan 405897	Fee Simple Title	0.0589 Ha	420654
Lot 635 Deposited Plan 405897	Fee Simple Title	0.0919 Ha	420655
Lot 636 Deposited Plan 405897	Fee Simple Title	0.0703 Ha	420656
Lot 637 Deposited Plan 405897	Fee Simple Title	0.0588 Ha	420657
Lot 638 Deposited Plan 405897	Fee Simple Title	0.0686 Ha	420658
Lot 639 Deposited Plan 405897	Fee Simple Title	0.0614 Ha	420659
Lot 640 Deposited Plan 405897	Fee Simple Title	0.0677 Ha	420660
Lot 641 Deposited Plan 405897	Fee Simple Title	0.0681 Ha	420661
Lot 642 Deposited Plan 405897	Fee Simple Title	0.0671 Ha	420662
Lot 653 Deposited Plan 405897	Fee Simple Title	0.0697 Ha	420663
Lot 654 Deposited Plan 405897	Fee Simple Title	0.0708 Ha	420664
Lot 655 Deposited Plan 405897	Fee Simple Title	0.0702 Ha	420665
Lot 656 Deposited Plan 405897	Fee Simple Title	0.0694 Ha	420666



Digital Survey Plan - DP 405897

Created Parcels

Parcels	Parcel Intent	Area	CT Reference
Lot 657 Deposited Plan 405897	Fee Simple Title	0.0687 Ha	420667
Lot 658 Deposited Plan 405897	Fee Simple Title	0.0718 Ha	420668
Lot 659 Deposited Plan 405897	Fee Simple Title	0.0649 Ha	420669
Lot 660 Deposited Plan 405897	Fee Simple Title	0.0637 Ha	420670
Lot 661 Deposited Plan 405897	Fee Simple Title	0.0622 Ha	420671
Lot 662 Deposited Plan 405897	Fee Simple Title	0.0655 Ha	420672
Lot 663 Deposited Plan 405897	Fee Simple Title	0.0704 Ha	420673
Lot 664 Deposited Plan 405897	Fee Simple Title	0.0631 Ha	420674
Lot 665 Deposited Plan 405897	Fee Simple Title	0.0629 Ha	420675
Lot 666 Deposited Plan 405897	Fee Simple Title	0.0623 Ha	420676
Lot 667 Deposited Plan 405897	Fee Simple Title	0.0636 Ha	420677
Lot 668 Deposited Plan 405897	Fee Simple Title	0.0652 Ha	420678
Lot 669 Deposited Plan 405897	Fee Simple Title	0.0653 Ha	420679
Lot 670 Deposited Plan 405897	Fee Simple Title	0.0652 Ha	420680
Lot 671 Deposited Plan 405897	Fee Simple Title	0.0669 Ha	420681
Lot 691 Deposited Plan 405897	Fee Simple Title	0.0626 Ha	420682
Lot 692 Deposited Plan 405897	Fee Simple Title	0.0620 Ha	420683
Lot 693 Deposited Plan 405897	Fee Simple Title	0.0611 Ha	420684
Lot 694 Deposited Plan 405897	Fee Simple Title	0.0606 Ha	420685
Lot 695 Deposited Plan 405897	Fee Simple Title	0.0599 Ha	420686
Lot 696 Deposited Plan 405897	Fee Simple Title	0.0599 Ha	420687
Lot 697 Deposited Plan 405897	Fee Simple Title	0.0599 Ha	420688
Lot 698 Deposited Plan 405897	Fee Simple Title	0.0599 Ha	420689
Lot 699 Deposited Plan 405897	Fee Simple Title	0.0646 Ha	420690
Marked AA Deposited Plan 405897	Easement		
Marked AH Deposited Plan 405897	Easement		
Marked AI Deposited Plan 405897	Easement		
Marked B Deposited Plan 405897	Land Covenant		
Marked C Deposited Plan 405897	Land Covenant		
Marked D Deposited Plan 405897	Land Covenant		
Marked E Deposited Plan 405897	Land Covenant		
Marked F Deposited Plan 405897	Land Covenant		
Marked G Deposited Plan 405897	Land Covenant		
Marked H Deposited Plan 405897	Land Covenant		
Marked I Deposited Plan 405897	Land Covenant		
Marked J Deposited Plan 405897	Land Covenant		
Marked K Deposited Plan 405897	Land Covenant		
Marked AL Deposited Plan 405897	Easement		
Marked AR Deposited Plan 405897	Easement		
Marked AS Deposited Plan 405897	Easement		



Digital Survey Plan - DP 405897

Created Parcels

Parcels	Parcel Intent	Area	CT Reference
Marked L Deposited Plan 405897	Land Covenant		
Marked N Deposited Plan 405897	Land Covenant		
Marked P Deposited Plan 405897	Land Covenant		
Marked AU Deposited Plan 405897	Easement		
Marked AV Deposited Plan 405897	Easement		
Marked AW Deposited Plan 405897	Easement		
Marked T Deposited Plan 405897	Land Covenant		
Marked U Deposited Plan 405897	Land Covenant		
Marked BW Deposited Plan 405897	Easement		
Marked BA Deposited Plan 405897	Easement		
Marked BB Deposited Plan 405897	Easement		
Marked BC Deposited Plan 405897	Easement		
Marked BD Deposited Plan 405897	Easement		
Marked BE Deposited Plan 405897	Easement		
Marked V Deposited Plan 405897	Land Covenant		
Marked W Deposited Plan 405897	Land Covenant		
Marked BF Deposited Plan 405897	Easement		
Marked X Deposited Plan 405897	Land Covenant		
Marked BV Deposited Plan 405897	Easement		
Marked BH Deposited Plan 405897	Easement		
Marked Z Deposited Plan 405897	Land Covenant		
Marked BI Deposited Plan 405897	Easement		
Marked BJ Deposited Plan 405897	Easement		
Marked BK Deposited Plan 405897	Easement		
Marked BL Deposited Plan 405897	Easement		
Marked BM Deposited Plan 405897	Easement		
Marked CA Deposited Plan 405897	Easement		
Marked CB Deposited Plan 405897	Easement		
Marked BN Deposited Plan 405897	Easement		
Marked BO Deposited Plan 405897	Easement		
Marked BP Deposited Plan 405897	Easement		
Marked BQ Deposited Plan 405897	Easement		
Marked CC Deposited Plan 405897	Easement		
Marked CD Deposited Plan 405897	Easement		
Marked BT Deposited Plan 405897	Easement		
Marked BS Deposited Plan 405897	Easement		
Marked ZA Deposited Plan 405897	Easement		
Marked ZB Deposited Plan 405897	Easement		
Marked ZC Deposited Plan 405897	Easement		
Marked ZD Deposited Plan 405897	Easement		



Digital Survey Plan - DP 405897

Created Parcels

Parcels	Parcel Intent	Area	CT Reference
Marked ZE Deposited Plan 405897	Easement		
Marked ZJ Deposited Plan 405897	Easement		
Marked ZG Deposited Plan 405897	Easement		
Marked ZF Deposited Plan 405897	Easement		
Marked ZH Deposited Plan 405897	Easement		
Marked ZI Deposited Plan 405897	Easement		
Marked YE Deposited Plan 405897	Easement		
Marked YG Deposited Plan 405897	Easement		
Marked YF Deposited Plan 405897	Easement		
Marked YD Deposited Plan 405897	Easement		
Marked YI Deposited Plan 405897	Easement		
Marked YH Deposited Plan 405897	Easement		
Marked YA Deposited Plan 405897	Easement		
Marked YB Deposited Plan 405897	Easement		
Marked YC Deposited Plan 405897	Easement		
Marked BX Deposited Plan 405897	Easement		
Marked BY Deposited Plan 405897	Easement		
Marked YJ Deposited Plan 405897	Easement		
Total Area		<hr/> 55.9553 Ha	

DP 405897

Memorandum of Easements			
(Pursuant to s243 Resource Management Act 1991)			
Purpose	Shown	Servient Tenement	Dominant Tenement
Right to drain sewage and water	AA	Lot 670 hereon	Lot 671 hereon
	AV	Lot 620 hereon	Lot 619 hereon
	AY	Lot 624 hereon	Lot 623 hereon
	BW	Lot 624 hereon	Lot 625 hereon
	BV	Lot 632 hereon	Lot 633 hereon
	BM	Lot 637 hereon	Lot 638 hereon
	BN	Lot 640 hereon	Lot 639 hereon
Right of Way	AU	Lot 616 hereon	Lot 615 hereon
	BD	Lot 112 hereon	Lots 627, 628 & 629 hereon
	BI	Lot 635 hereon	Lot 636 hereon
	BU	Lot 635 hereon	Lot 636 hereon
Right to convey water, electricity, gas, telecommunications and computer media	AU	Lot 616 hereon	Lot 615 hereon
	BD	Lot 112 hereon	Lots 627, 628 & 629 hereon
	BI	Lot 635 hereon	Lot 636 hereon
	BU	Lot 635 hereon	Lot 636 hereon

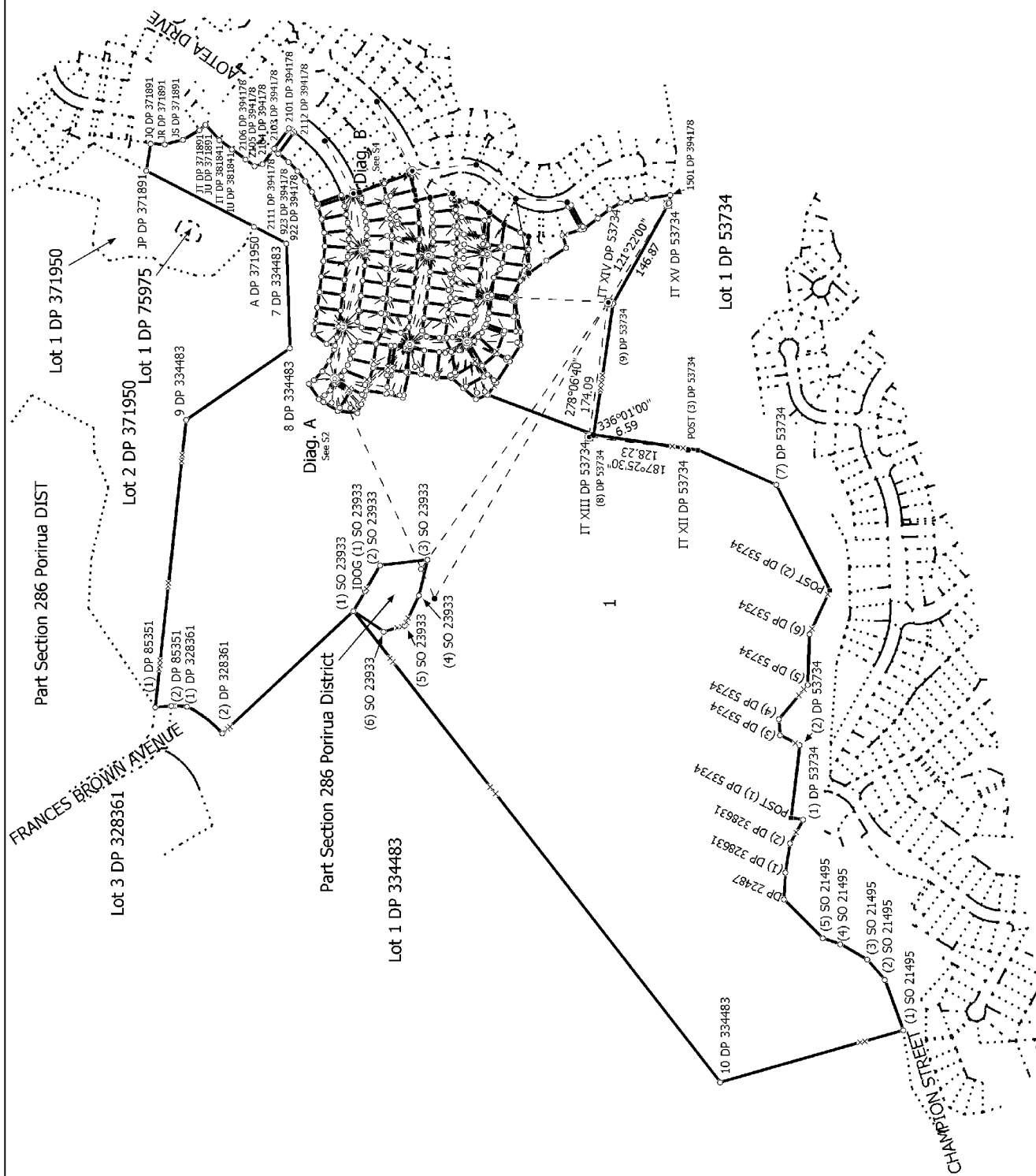
DP 405897

Memorandum of Easements in Gross			
(Pursuant to s243 Resource Management Act 1991)			
Purpose	Shown	Servient Tenement	Grantee
Right to drain sewage and water	AX	Lot 670 hereon	Porirua City Council
	AB	Lot 669 hereon	
	AC	Lot 668 hereon	
	AD	Lot 667 hereon	
	AF	Lot 666 hereon	
	AG	Lot 665 hereon	
	AH	Lot 664 hereon	
	AI	Lot 663 hereon	
	AM	Lot 602 hereon	
	AN	Lot 603 hereon	
	AO	Lot 604 hereon	
	AP	Lot 605 hereon	
	AR	Lot 606 hereon	
	AS	Lot 607 hereon	
	AT	Lot 608 hereon	
	AU	Lot 616 hereon	
	AW	Lot 203 hereon	
	AZ	Lot 624 hereon	
	BA	Lot 627 hereon	
	BB	Lot 628 hereon	
	BC	Lot 628 hereon	
	BD	Lot 112 hereon	
	BE	Lot 630 hereon	
	BF	Lot 631 hereon	
	BG	Lot 632 hereon	
	BH	Lot 634 hereon	
	BI	Lot 635 hereon	
	BJ	Lot 637 hereon	
	BK	Lot 636 hereon	
	BL	Lot 636 hereon	
	BO	Lot 640 hereon	
	BP	Lot 641 hereon	
	BQ	Lot 641 hereon	
	BX	Lot 203 hereon	
	DA	Lot 635 hereon	
Right to drain sewage	BZ	Lot 203 hereon	
Right to drain water	AE	Lot 667 hereon	
	AL	Lot 602 hereon	
	AQ	Lot 605 hereon	
	BR	Lot 641 hereon	
	BS	Lot 1 hereon	
	BT	Lot 698 hereon	
	BY	Lot 203 hereon	

DP 405897

Schedule of Existing Easements in Gross				
Purpose/Interest	Servient Tenement	Shown	Created By	Grantee
Right to convey water	Lot 1 hereon	ZF, ZG	B.686066.3	Porirua City Council
	Lot 1 hereon	ZE	B.557646.1	Wellington Regional Council
Right to drain sewage	Lot 1 hereon	ZJ	T.861524.2	
	Lot 203 hereon	ZH, ZI	B.686066.3	Porirua City Council
Right of Way	Lot 1 hereon	YG	EI 7843659.10	
	Lot 1 hereon	ZA, ZD, ZJ	T.861524.1	
Right to drain water	Lot 1 hereon	YA	EI 7843659.10	
	Lot 203 hereon	YF	EI 7843659.10	
	Lot 1 hereon	ZC	B.686066.3	
Right to drain sewage and water	Lot 600 hereon	YC	EI 7843659.10	
	Lot 203 hereon	YD, YE	EI 7843659.10	
	Lot 1 hereon	YH	EI.7450962.9	

Schedule of Existing Easements			
Purpose/Interest	Servient Tenement	Shown	Created By
Right to convey electricity	Lot 1 hereon	ZB	B.604095.2
Right to drain sewage and water	Lot 600 hereon	YB	EI 7843659.11
	Lot 1 hereon	YI	EI 7843659.11
	Lot 1 hereon	YJ	EI 7843659.11



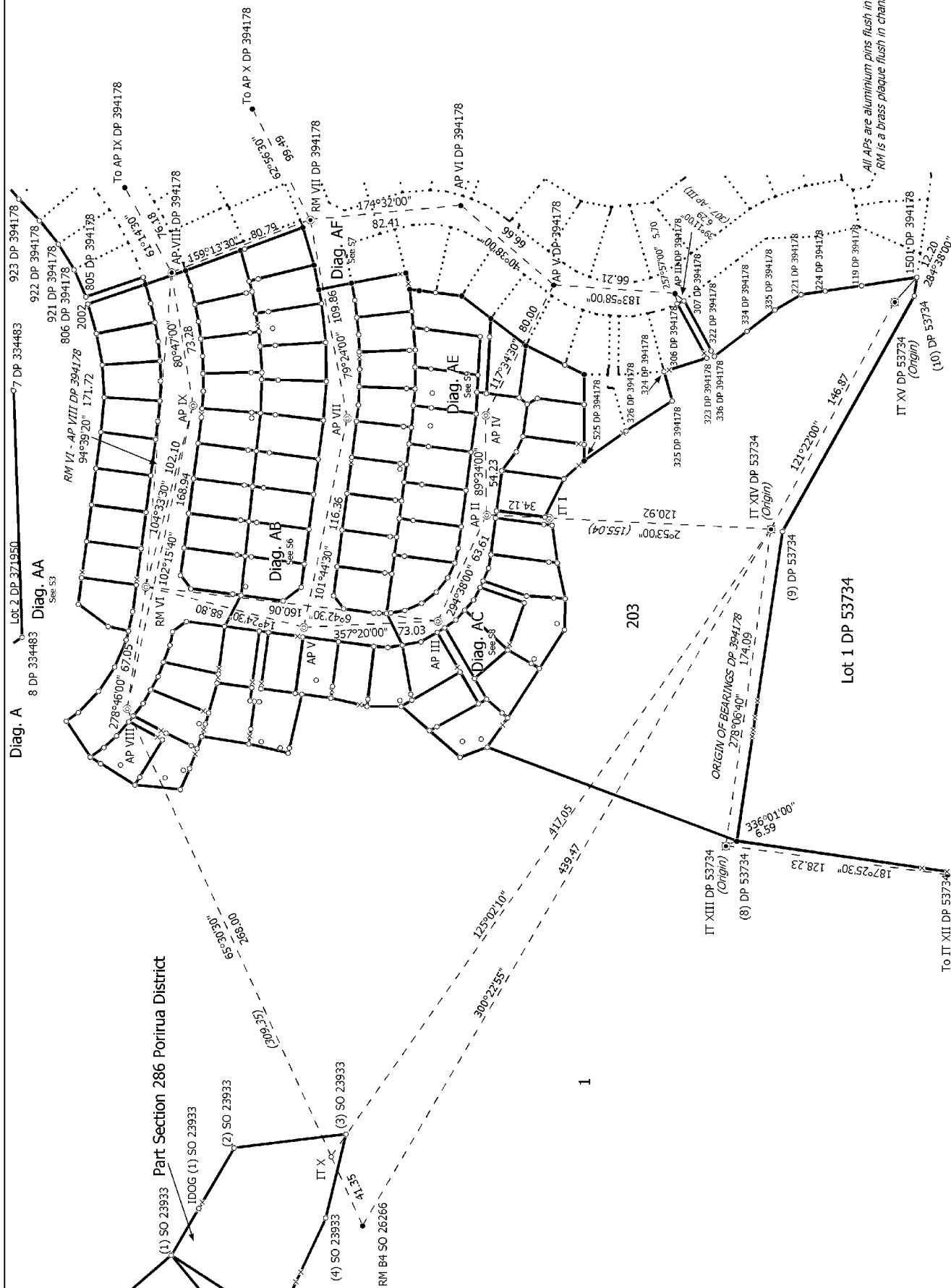
519

Surveyor: Brett William Horne
Firm: Harrison Grierson Consultants Ltd (Au)
Survey Date: 19/05/2008

Lots 1,103-105,112,203,600-642,653-671,691-699 being a subdivision of Lot 1 DP 394178

Digital Survey Plan
DP 405897Digitally Generated Plan
Generated on: 18/07/2008 10:56am Page 44 of 68

Deposited on: 1/07/2008



S 2/9

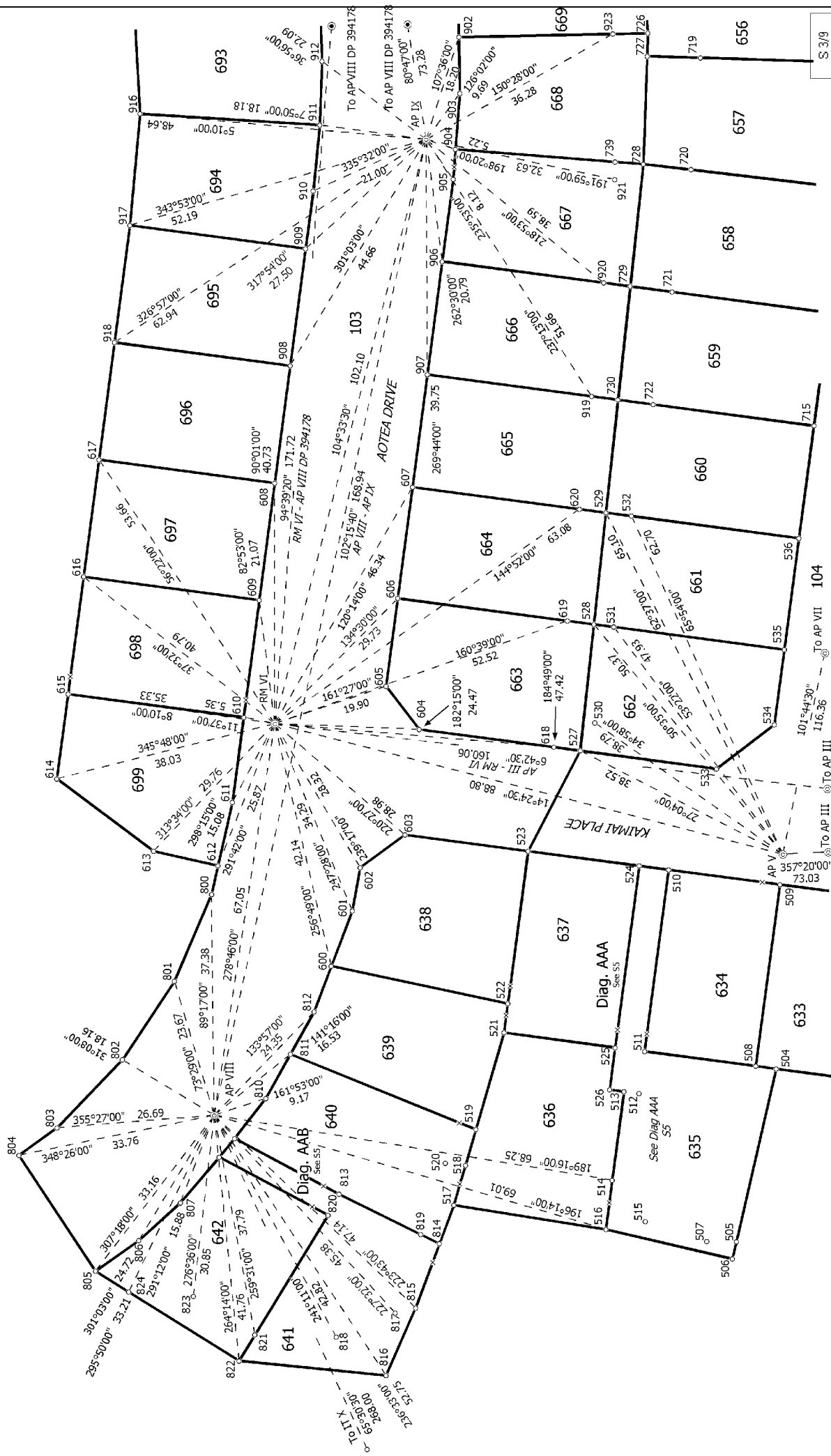
Land District Wellington	Lots 1, 103-105, 112, 203, 600-642, 653-671, 691-699 being a subdivision of Lot 1 DP 394178	Surveyor: Brett William Home Firm: Harrison Grierson Consultants Ltd (A) Survey Date: 19/05/2008	Digital Survey Plan DP 405897 Deposited on: 1/07/2008
Digitally Generated Plan Generated on: 18/07/2008 10:56am Page 45 of 68			



All APs are aluminium plus flush in channel unless otherwise stated
RM is a brass plaque flush in channel

Diag. AA

1



Land District Wellington

Digitally Generated Plan

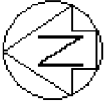
Generated on: 18/07/2008 10:56am Page 48 of 68

Lots 1,103-105,112,203,600-642,653-671,691-699 being a subdivision of Lot 1 DP 394178

Surveyor: Brett William Home
Firm: Harrison Grierson Consultants Ltd (A.
Survey Date: 19/05/2008

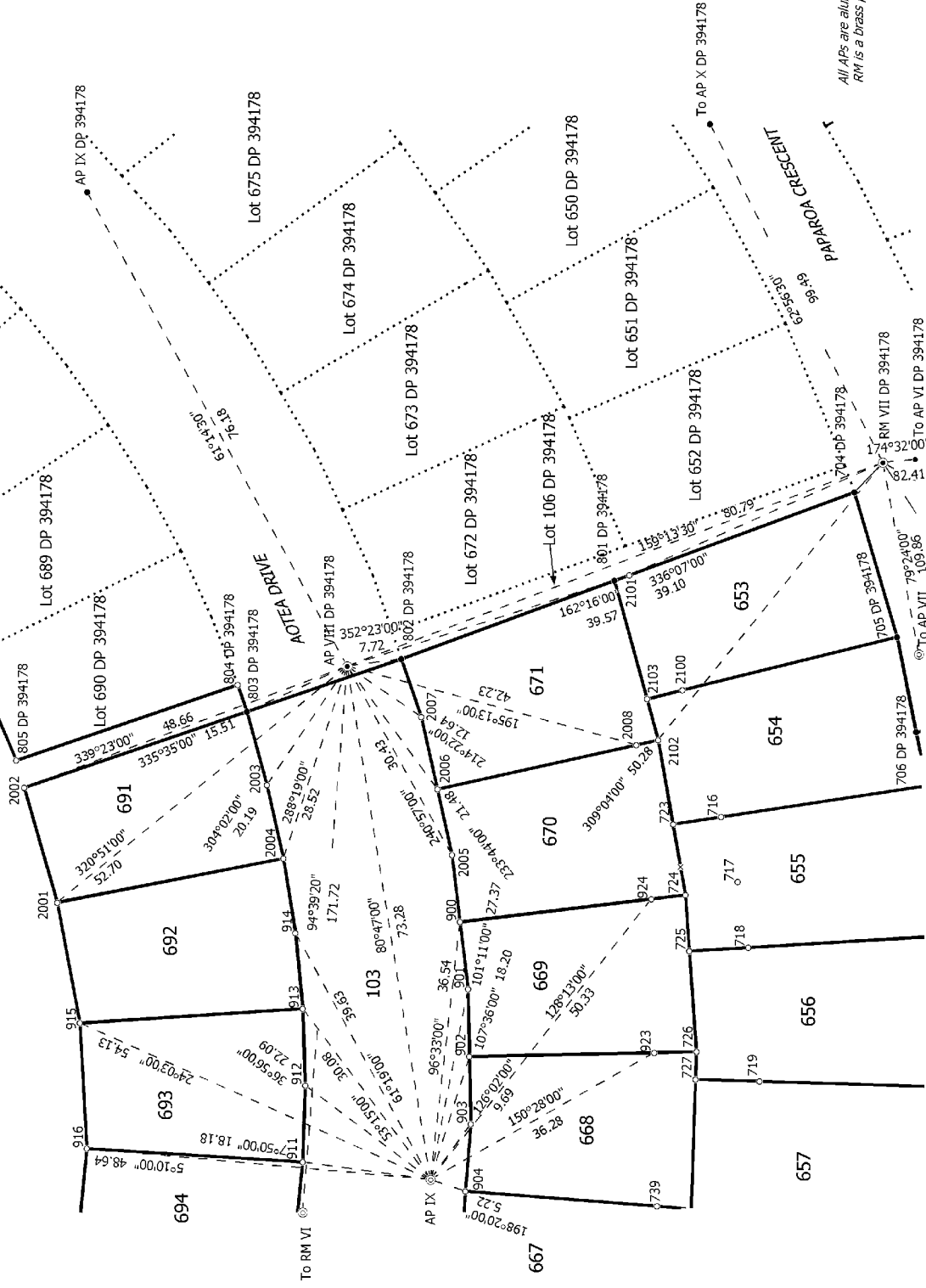
Digital Survey Plan
DP 405897

Deposited on: 1/07/2008



Diag. B

1



Land District Wellington

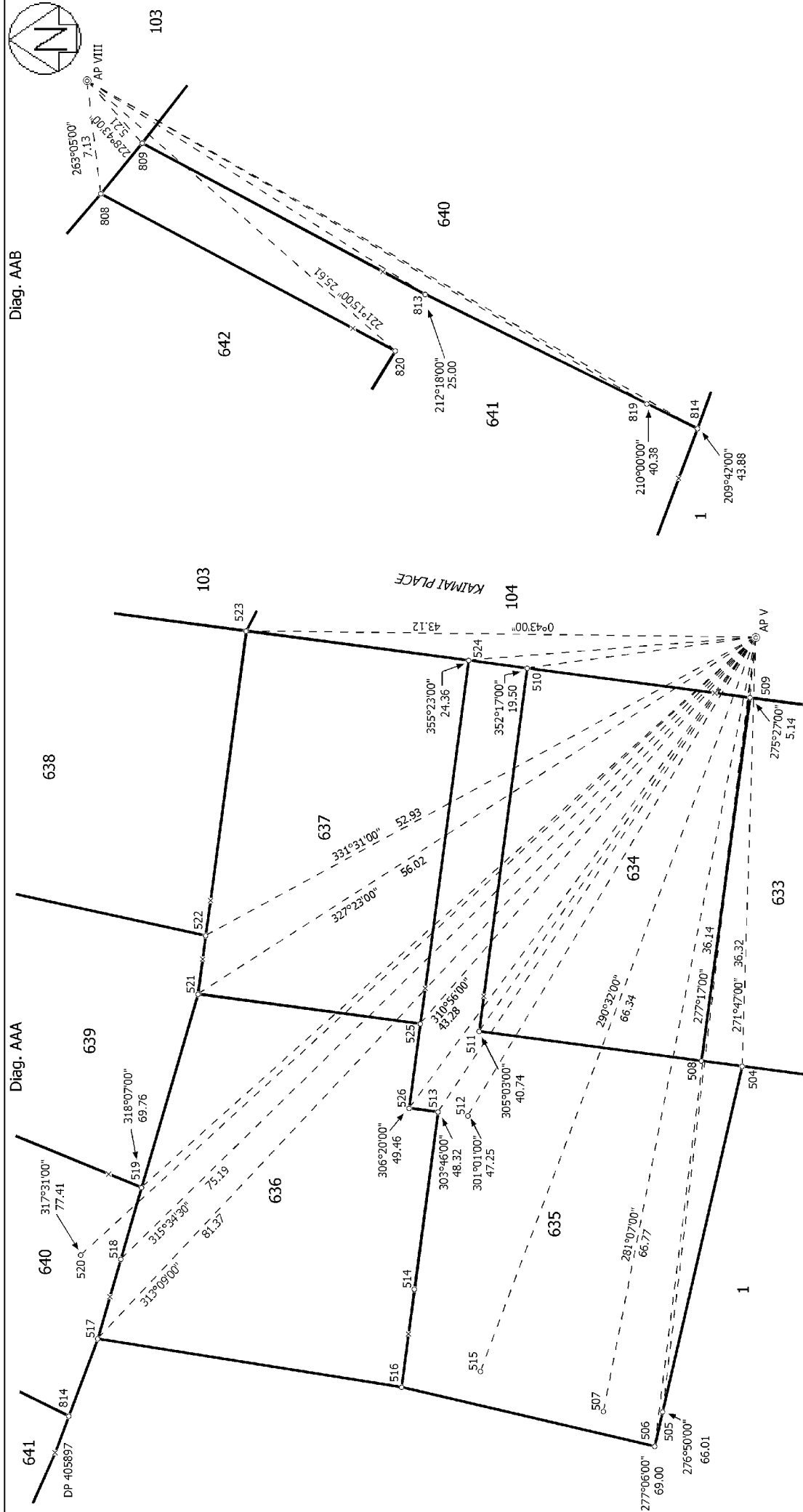
Digitally Generated Plan
Generated on: 18/07/2008 10:56am Page 47 of 68

Lots 1,103-105,112,203,600-642,653-671,691-699 being a subdivision of Lot 1 DP 394178

Surveyor: Brett William Home
Firm: Harrison Grierson Consultants Ltd (A.
Survey Date: 19/05/2008

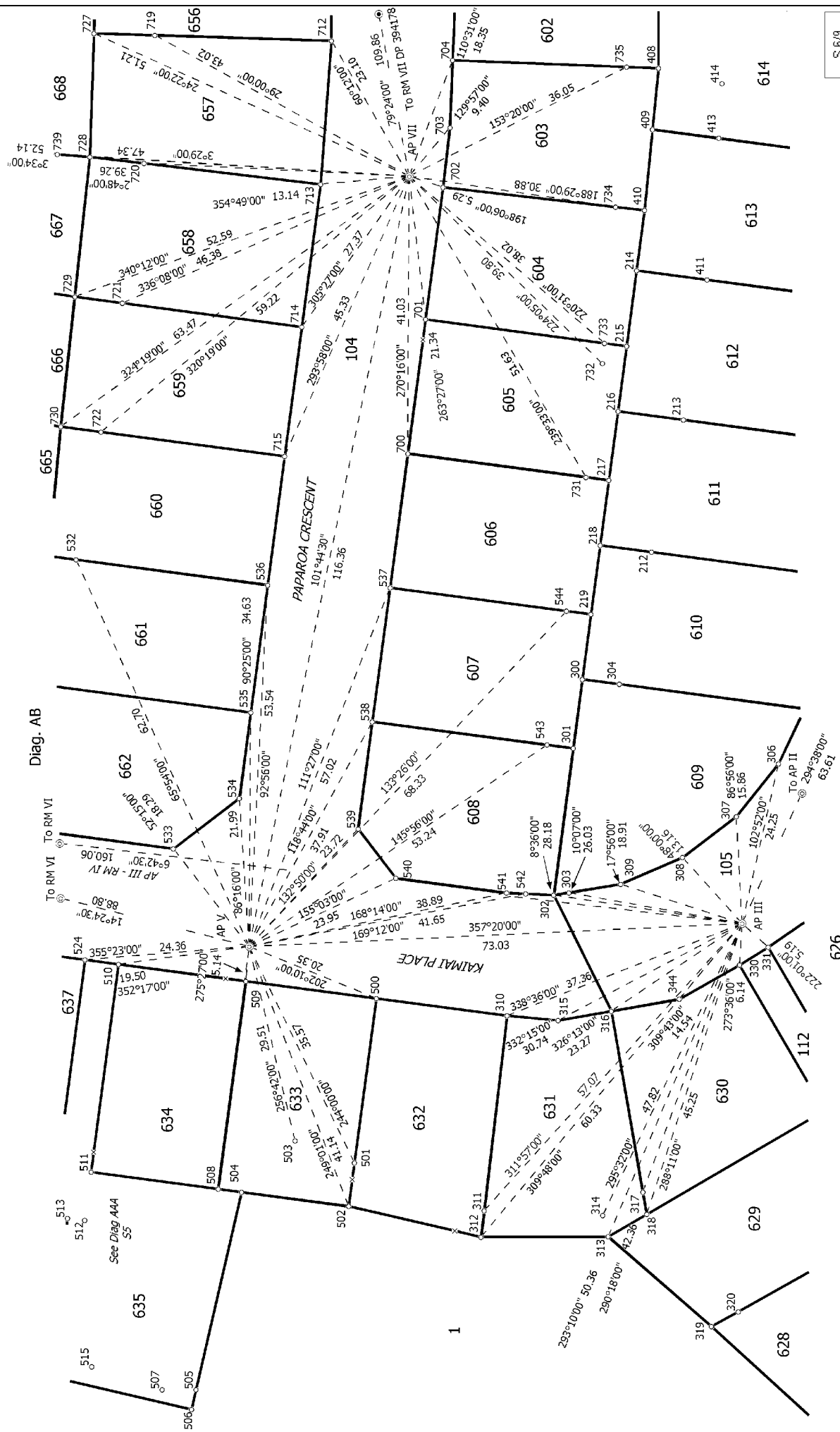
Digital Survey Plan
DP 405897

Deposited on: 1/07/2008





All APs are aluminium pins flush in channel unless otherwise stated
RM is a brass plaque flush in channel



S 6/9

Land District Wellington

Digitally Generated Plan

Generated on: 18/07/2008 10:56am Page 49 of 68

Lots 1,103-105,112,203,600-642,653-671,691-699 being a subdivision of Lot 1 DP 394178

Surveyor: Brett William Home
Firm: Harrison Grierson Consultants Ltd (A)
Survey Date: 19/05/2008

Digital Survey Plan
DP 405897

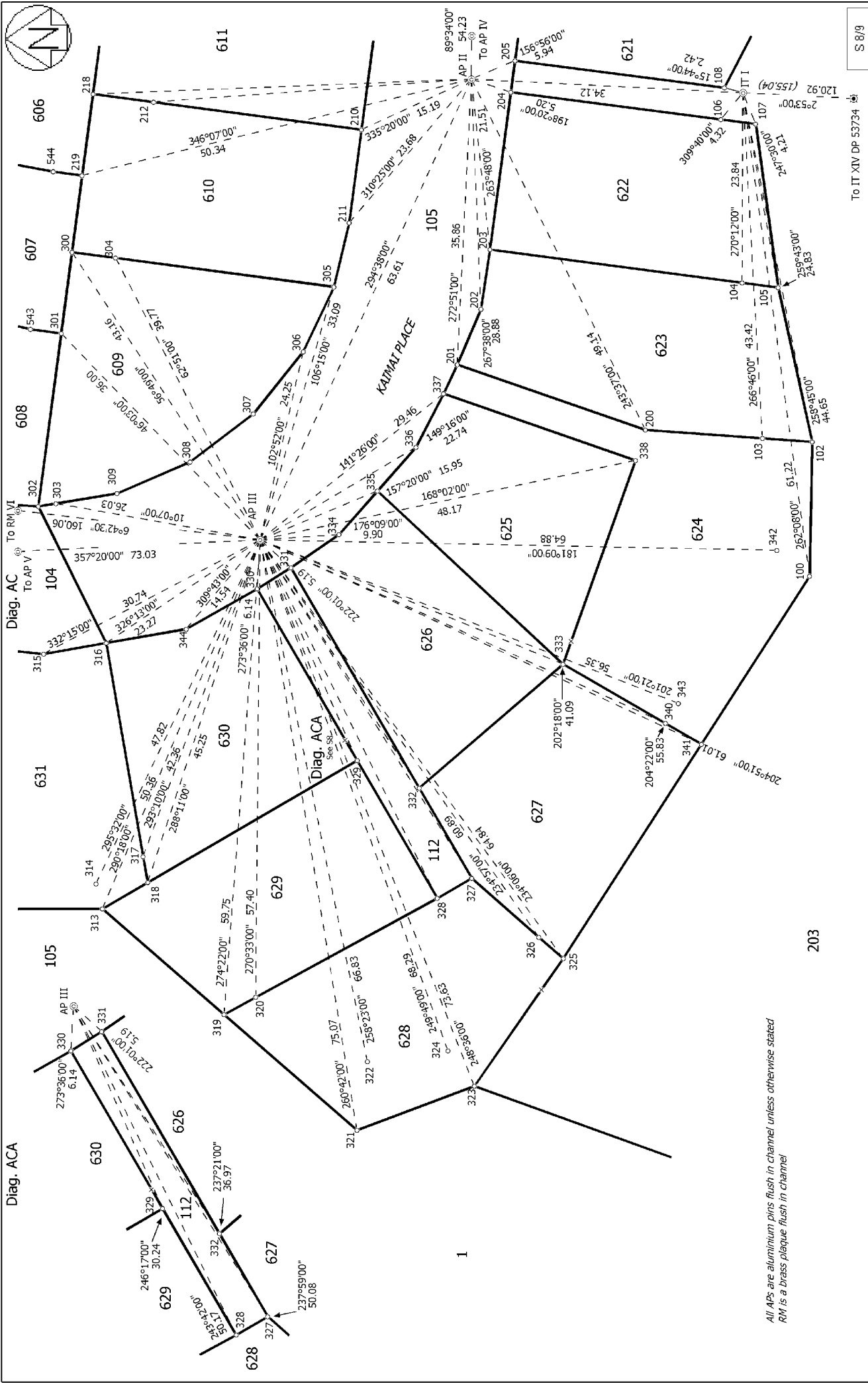
Deposited on: 1/07/2008



All APs are aluminium pins flush in channel unless otherwise stated
RM is a brass plaque flush in channel

S 7/9

Land District Wellington	Lots 1,103-105,112,203,600-642,653-671,691-699 being a subdivision of Lot 1 DP 394178	Surveyor: Brett William Home Firm: Harrison Grierson Consultants Ltd (A) Survey Date: 19/05/2008	Digital Survey Plan DP 405897 Deposited on: 1/07/2008
Digitally Generated Plan Generated on: 18/07/2008 10:56am Page 50 of 68			



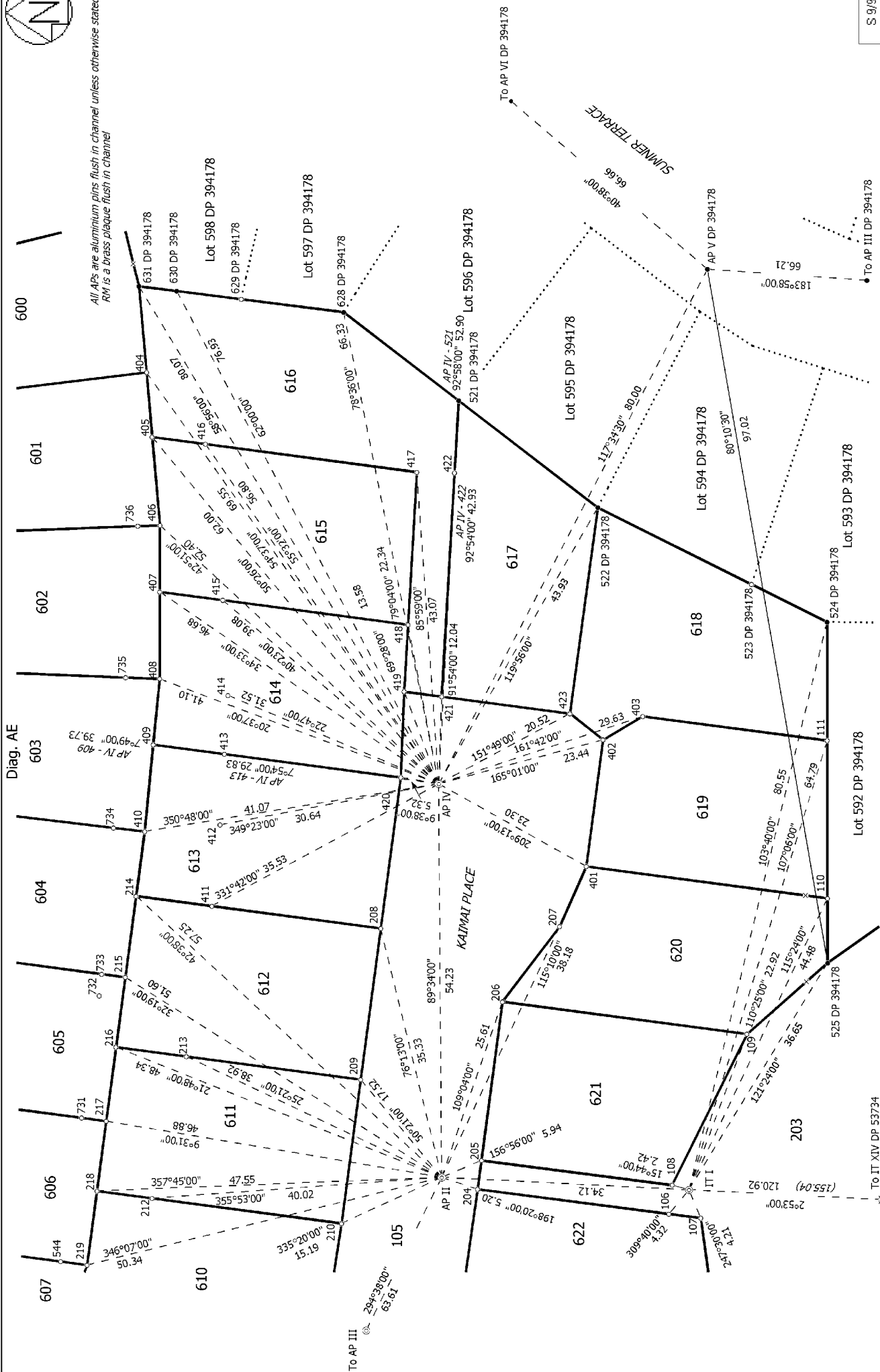
To IT XIV DP 53734

<p>Land District Wellington</p> <p>Digitally Generated Plan</p> <p>Generated on: 18/07/2008 10:56am Page 51 of 68</p>	<p>Lots 1,103-105,112,203,600-642,653-671,691-699 being a subdivision of Lot 1 DP 394178</p>	<p>Surveyor: Brett William Home</p> <p>Firm: Harrison Grierson Consultants Ltd (A)</p> <p>Survey Date: 19/05/2008</p>	<p>Digital Survey Plan</p> <p>DP 405897</p> <p>Deposited on: 1/07/2008</p>
--	--	---	--

All APs are aluminium pins flush in channel unless otherwise stated
RM is a brass plaque flush in channel



All APs are aluminium pins flush in channel unless otherwise stated
RM is a brass plaque flush in channel



S 9/9

Land District Wellington

Digitally Generated Plan

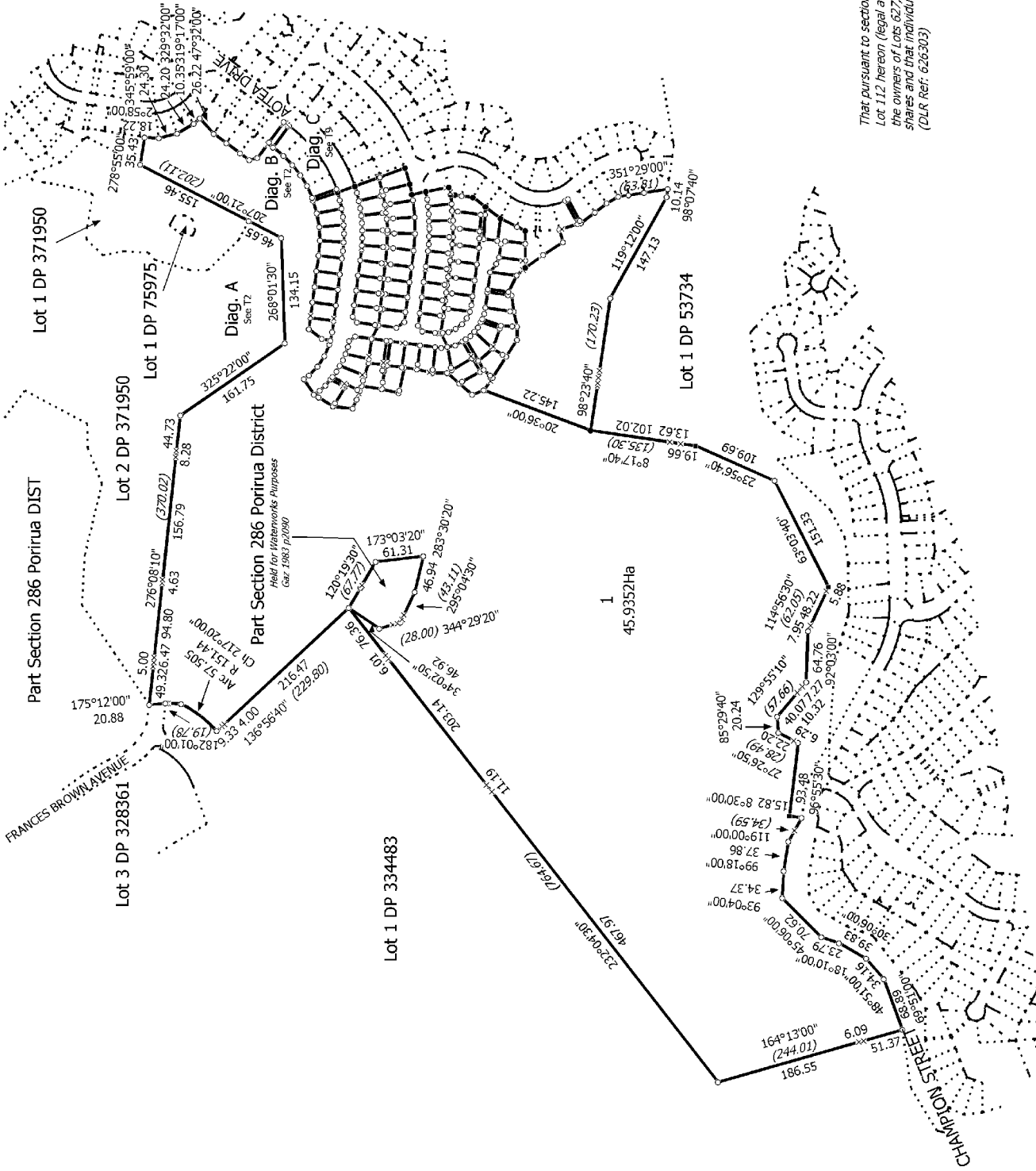
Generated on: 18/07/2008 10:56am Page 52 of 68

Lots 1,103-105,112,203,600-642,653-671,691-699 being a subdivision of Lot 1 DP 394178

Surveyor: Brett William Home
Firm: Harrison Grierson Consultants Ltd (A/C)
Survey Date: 19/05/2008

Digital Survey Plan
DP 405897

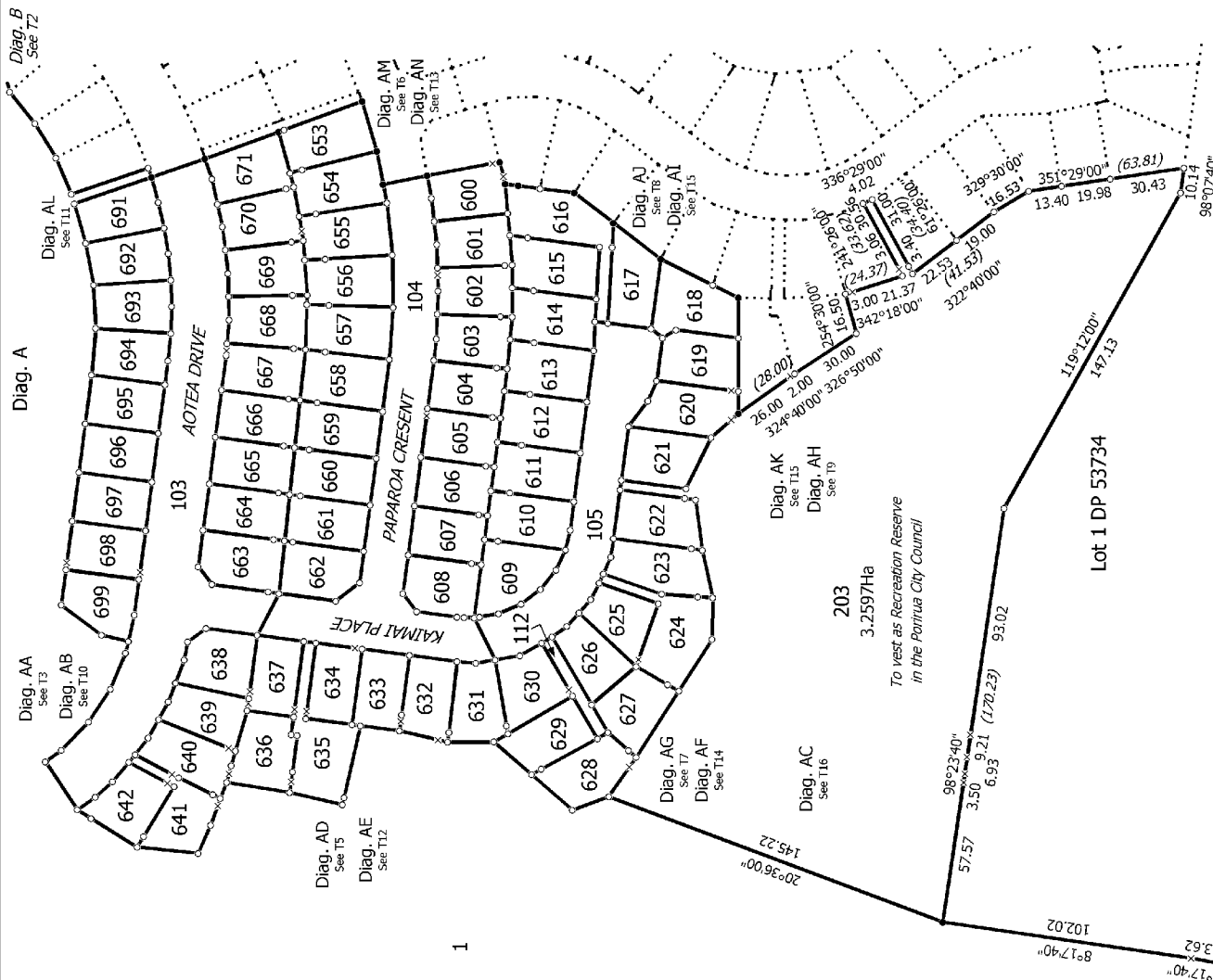
Deposited on: 1/07/2008



That pursuant to section 220(1)(b)(iv) of the Resource Management Act 1991, Lot 112 hereon (legal access) be held as to three undivided one-third shares by the owners of Lots 627, 628 and 629 hereon as tenants in common in the said shares and that individual certificates of title be issued in accordance therewith (DLR ref: 626303)

T 1/16

Land District Wellington	Lots 1,103-105,112,203,600-642,653-671,691-699 being a subdivision of Lot 1 DP 394178	Surveyor: Brett William Home Firm: Harrison Grierson Consultants Ltd (A) Survey Date: 19/05/2008	Digital Survey Plan DP 405897 Deposited on: 1/07/2008
Digitally Generated Plan Generated on: 18/07/2008 10:56am Page 53 of 68			



That pursuant to section 220(1)(b)(iv) of the Resource Management Act 1991, Lot 112 hereon (legal access) be held as to three undivided one-third shares by the owners of Lots 627, 628 and 629 hereon as tenants in common in the said shares and that individual certificates of title be issued in accordance therewith (DLR Ref: 626303)

Lots 1, 103-105, 112, 203, 600-642, 653-671, 691-699 being a subdivision of Lot 1 DP

Surveyor: Brett William Horne
Firm: Harrison Grierson Consultants Ltd (Au)
Survey Date: 19/05/2008

Digital Survey Plan
DP 405897Digitally Generated Plan
Generated on: 18/07/2008 10:56am Page 54 of 68

Deposited on: 1/07/2008



Diag. AA

1

That pursuant to section 220(1)(b)(iv) of the Resource Management Act 1991, Lot 112 hereon (legal access) be held as to three undivided one-third shares by the owners of Lots 627, 628 and 629 hereon as tenants in common in the said shares and that individual certificates of title be issued in accordance therewith (DLR Ref: 626303)



T 3/16

Land District Wellington

Digitally Generated Plan

Generated on: 18/07/2008 10:56am Page 55 of 68

Lots 1,103-105,112,203,600-642,653-671,691-699 being a subdivision of Lot 1 DP 394178

Surveyor: Brett William Home
Firm: Harrison Grierson Consultants Ltd (A.
Survey Date: 19/05/2008

Digital Survey Plan
DP 405897

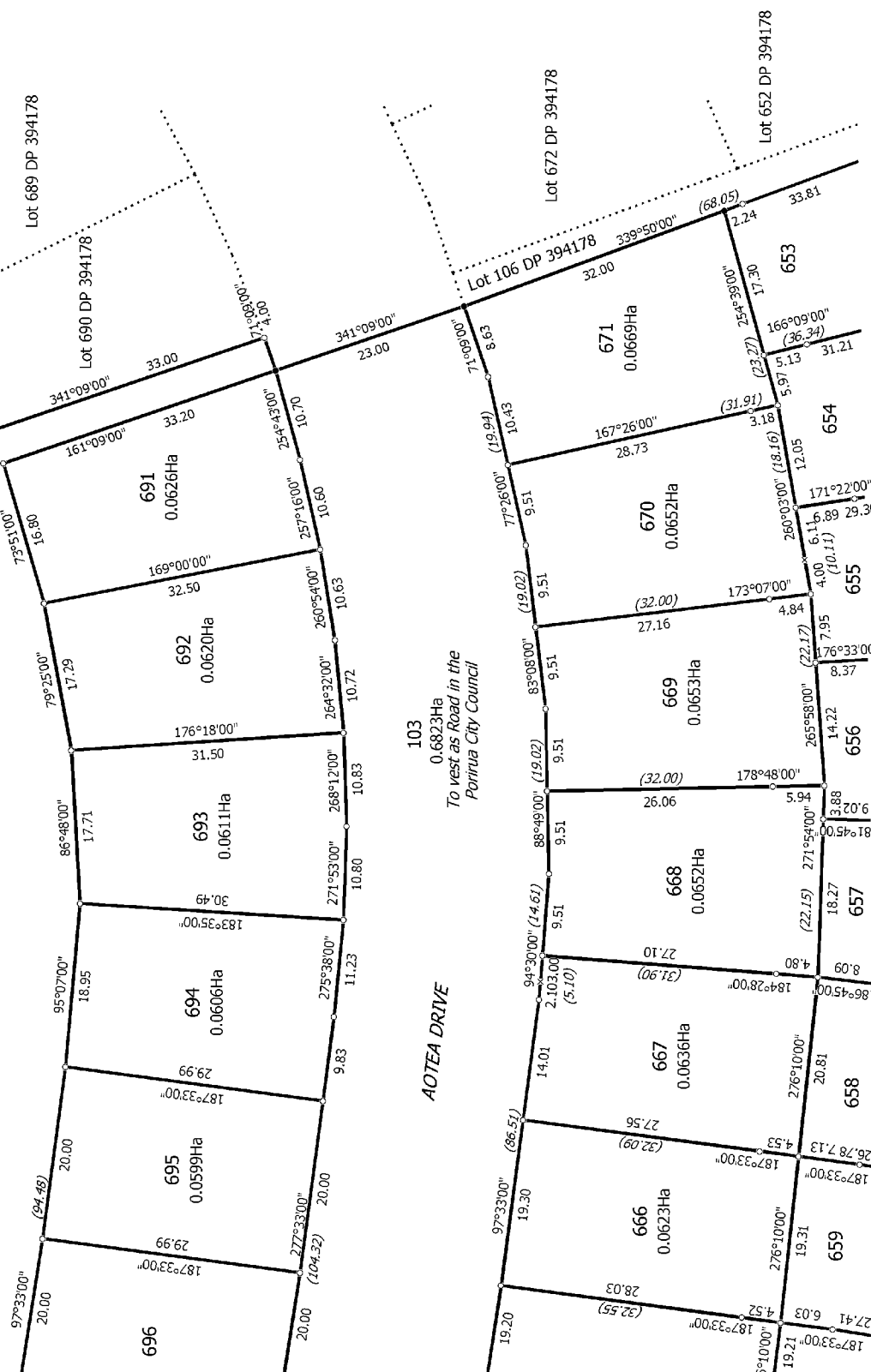
Deposited on: 1/07/2008



Diag. ALA

That pursuant to section 220(1)(b)(iv) of the Resource Management Act 1991, Lot 112 hereon (legal access) be held as to three undivided one-third shares by the owners of Lots 627, 628 and 629 hereon as tenants in common in the said shares and that individual certificates of title be issued in accordance therewith (DLR Ref: 6265303)

1



T 4/16

Land District Wellington

Digitally Generated Plan

Generated on: 18/07/2008 10:56am Page 56 of 68

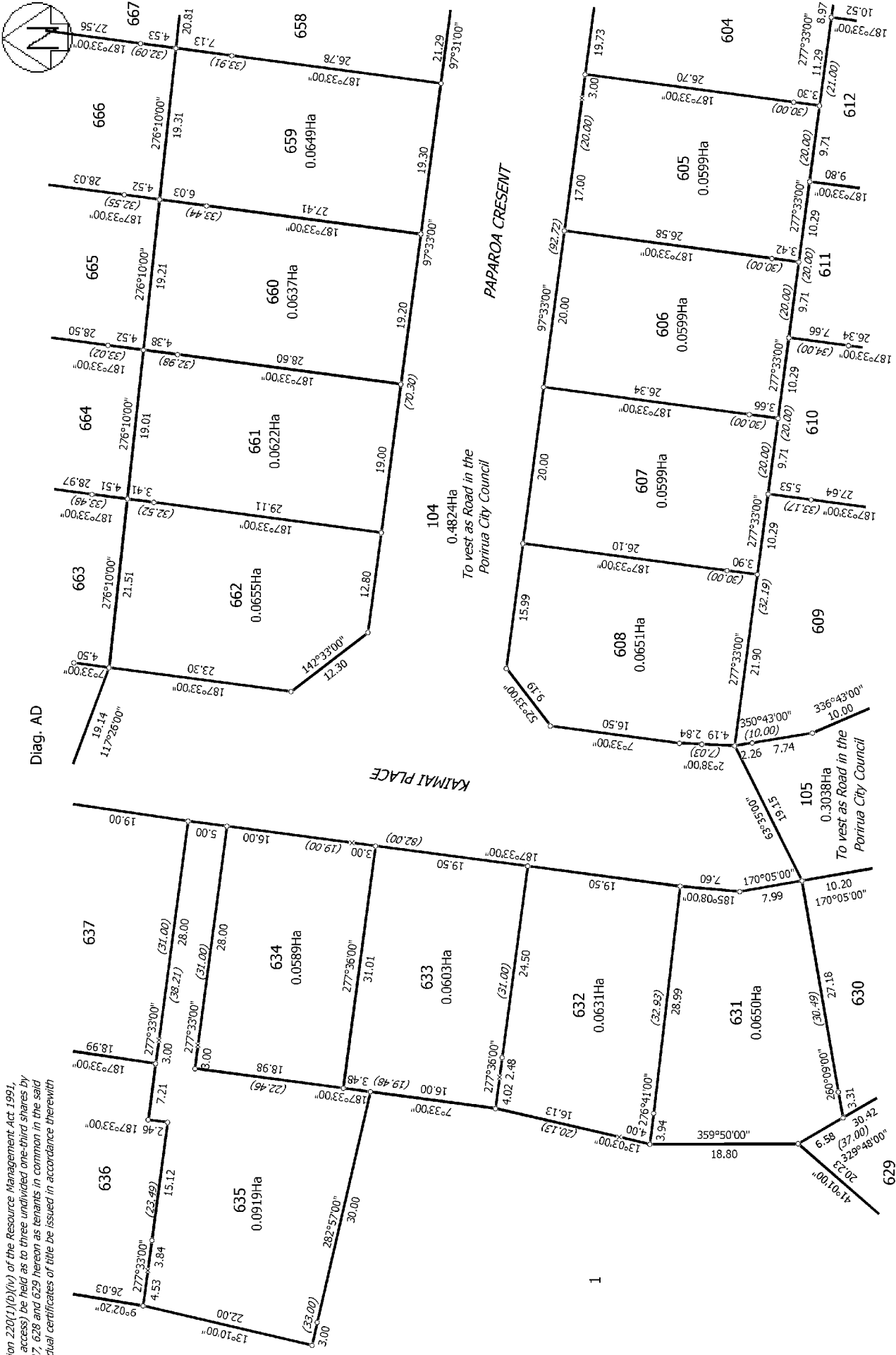
Lots 1,103-105,112,203,600-642,653-671,691-699 being a subdivision of Lot 1 DP 394178

Surveyor: Brett William Home
Firm: Harrison Grierson Consultants Ltd (A/C)
Survey Date: 19/05/2008

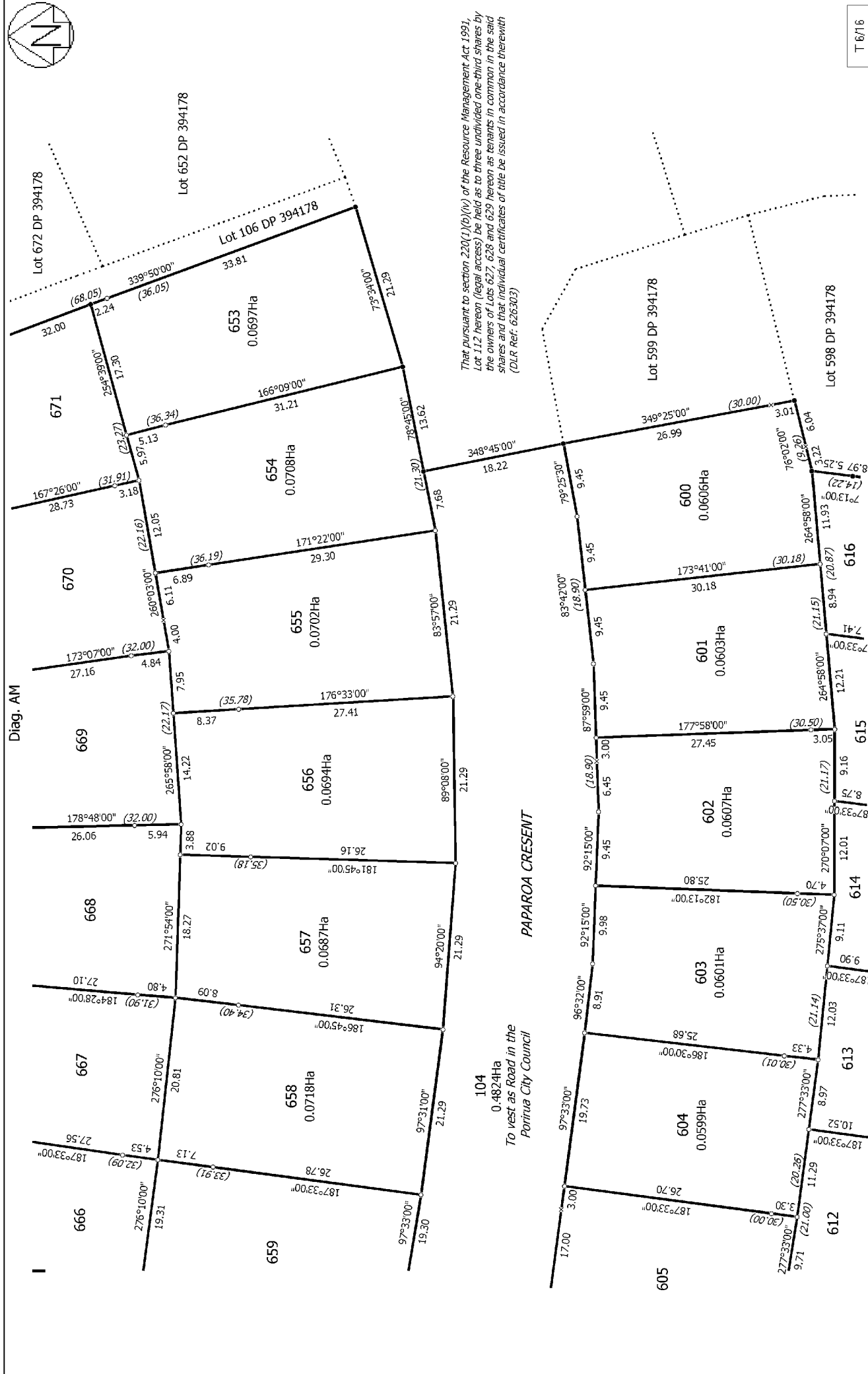
Digital Survey Plan
DP 405897

Deposited on: 1/07/2008

That pursuant to section 220(1)(b)(iv) of the Resource Management Act 1991, Lot 112 hereon (legal access) be held as to three undivided one-third shares by the owners of Lots 627, 628 and 629 hereon as tenants in common in the said shares and that individual certificates of title be issued in accordance therewith (DLR Ref: 626303)

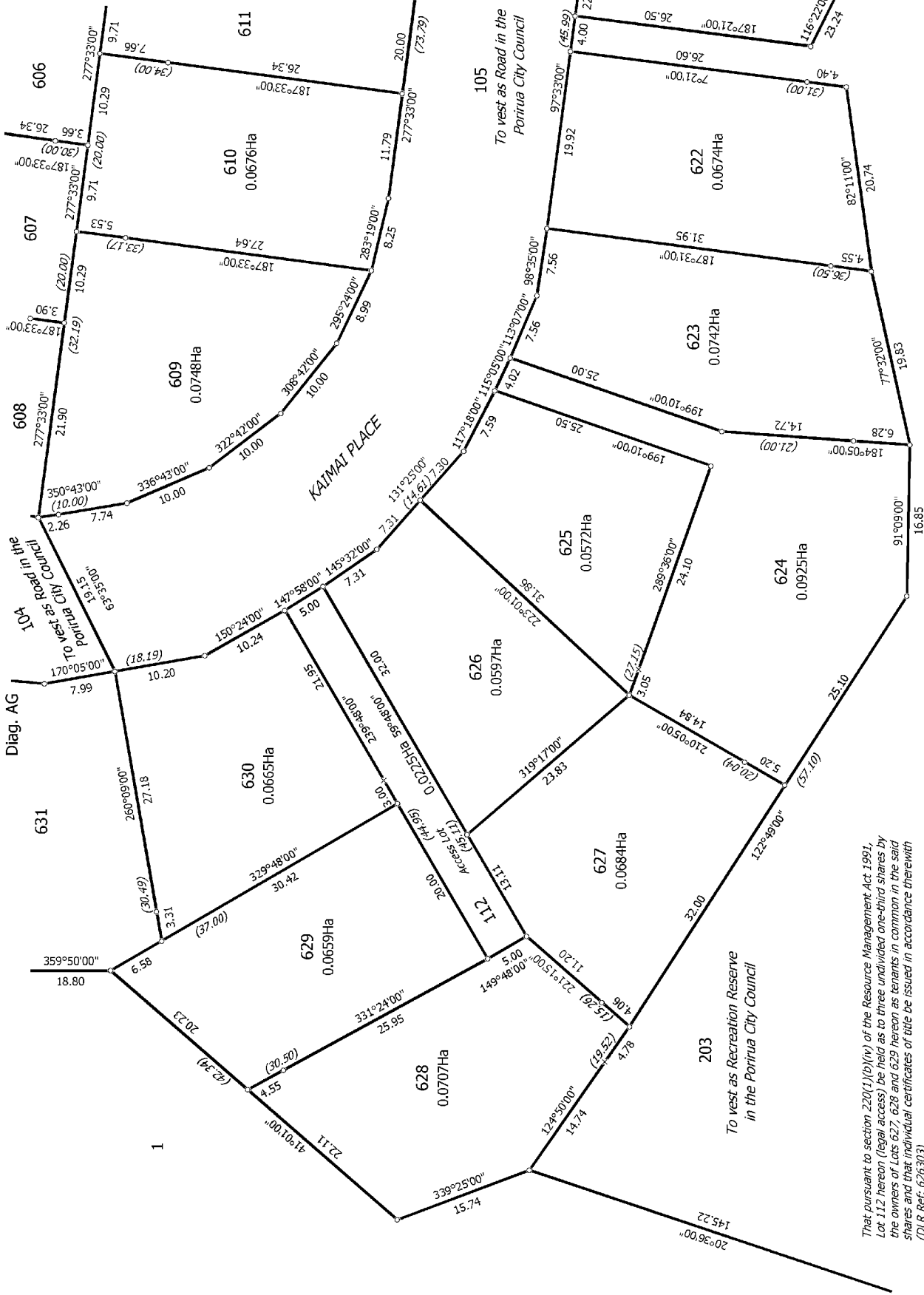


<p>Land District: Wellington</p> <p>Digitally Generated Plan</p> <p>Generated on: 18/07/2008 10:56am Page 57 of 68</p>	<p>Lots 1,103-105,112,203,600-642,653-671,691-699 being a subdivision of Lot 1 DP 394178</p> <p>Surveyor: Brett William Home Firm: Harrison Grierson Consultants Ltd (A) Survey Date: 19/05/2008</p> <p>Digital Survey Plan DP 405897</p> <p>Deposited on: 1/07/2008</p>
---	---



T 6/16

Land District: Wellington	Lots 1,103-105,112,203,600-642,653-671,691-699 being a subdivision of Lot 1 DP 394178	Surveyor: Brett William Home Firm: Harrison Grierson Consultants Ltd (A) Survey Date: 19/05/2008	Digital Survey Plan DP 405897	Deposited on: 1/07/2008
Digitally Generated Plan Generated on: 18/07/2008 10:56am Page 58 of 68				



T 7/16

Land District Wellington

Digitally Generated Plan

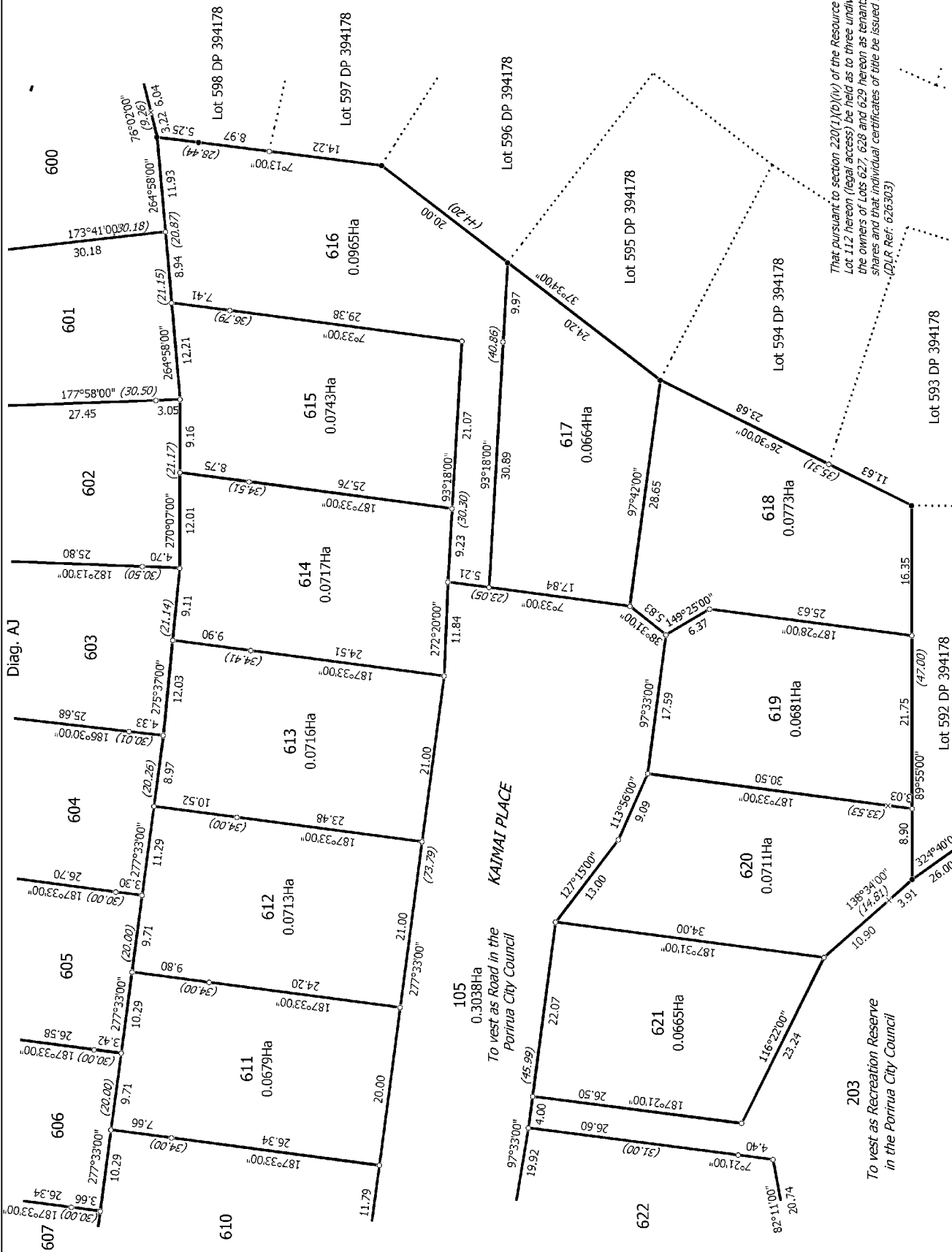
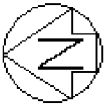
Generated on: 18/07/2008 10:56am Page 59 of 68

Lots 1,103-105,112,203,600-642,653-671,691-699 being a subdivision of Lot 1 DP 394178

Surveyor: Brett William Home
Firm: Harrison Grierson Consultants Ltd (A.
Survey Date: 19/05/2008

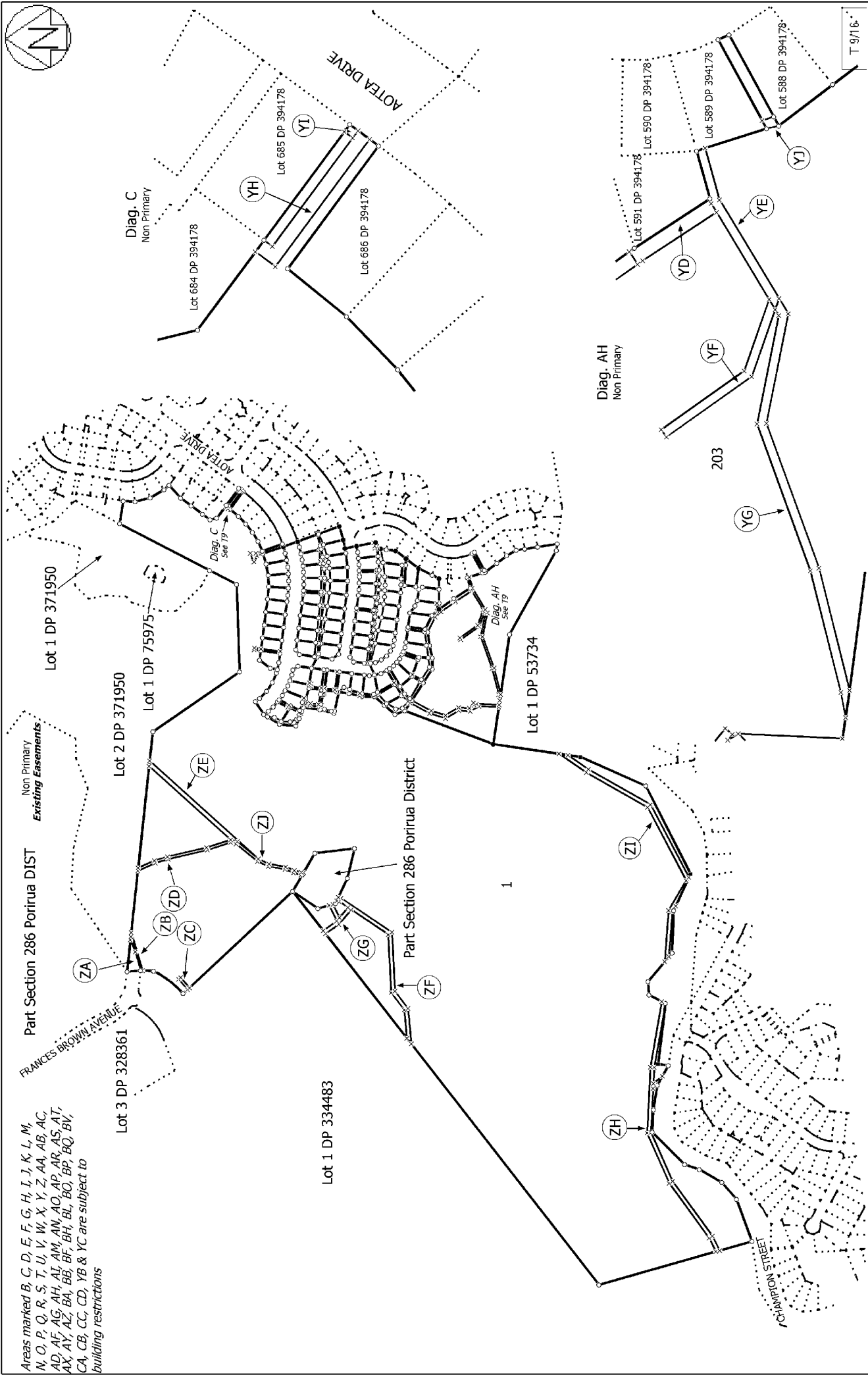
Digital Survey Plan
DP 405897

Deposited on: 1/07/2008



T 8/16

Land District Wellington	Lots 1,103-105,112,203,600-642,653-671,691-699 being a subdivision of Lot 1 DP 394178	Surveyor: Brett William Home Firm: Harrison Grierson Consultants Ltd (A.I.) Survey Date: 19/05/2008	Digital Survey Plan DP 405897	Deposited on: 1/07/2008
Digitally Generated Plan Generated on: 18/07/2008 10:56am Page 60 of 68				



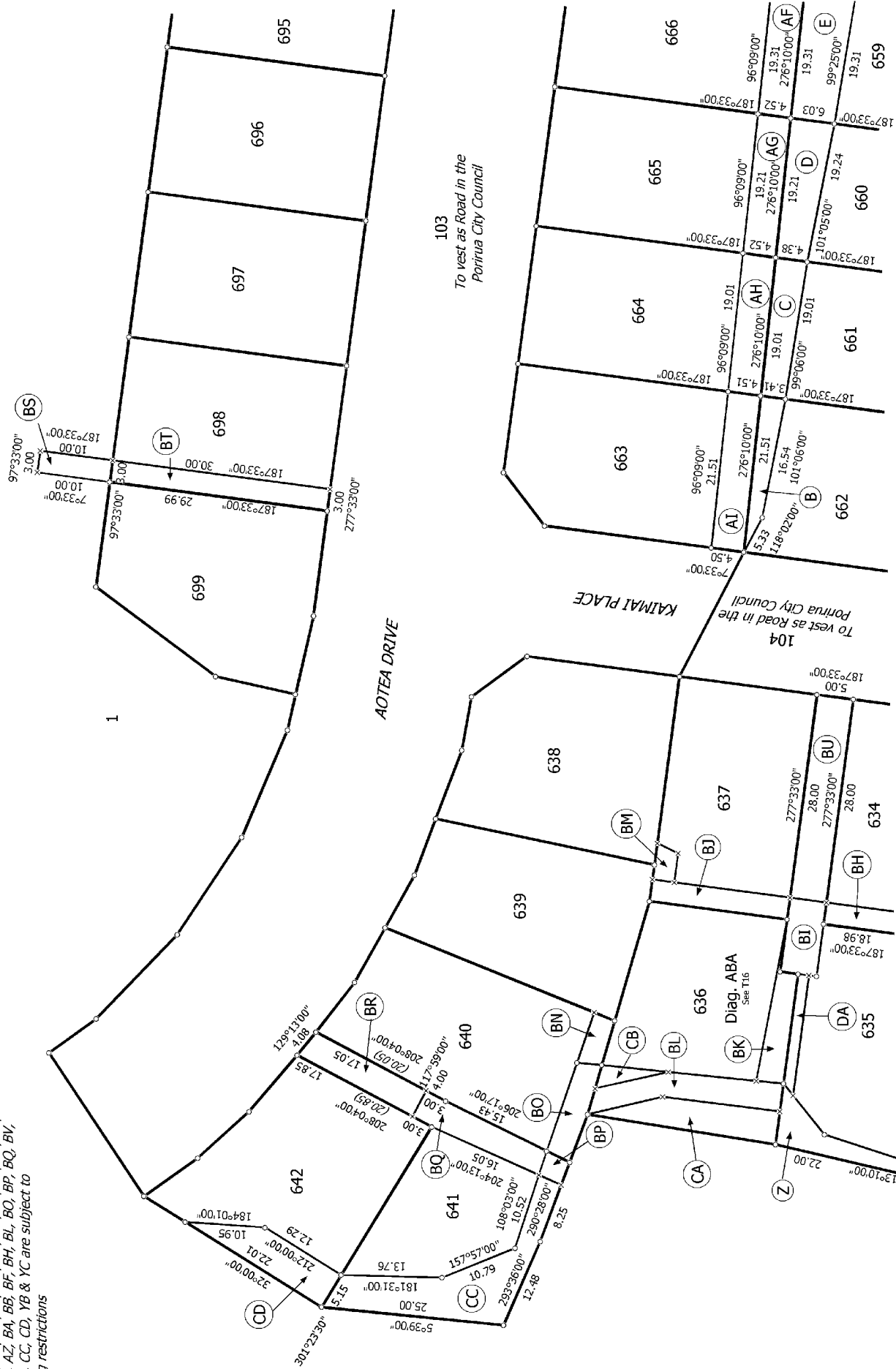
Areas marked B, C, D, E, F, G, H, I, J, K, L, M, N, O, P, Q, R, S, T, U, V, W, X, Y, Z, AA, AB, AC, AD, AE, AF, AG, AH, AI, AJ, AK, AL, AM, AN, AO, AP, AR, AS, AT, AU, AV, AW, AX, AY, AZ, BA, BB, BC, BD, BE, BF, BG, BH, BI, BJ, BK, BL, BM, BN, BO, BP, BQ, BR, BS, BT, BU, BV, BW, BX, BY, BZ, CA, CB, CC, CD, CE, CF, CG, CH, CI, CJ, CK, CL, CM, CN, CO, CP, CQ, CR, CS, CT, CU, CV, CW, CX, CY, CZ, DA, DB, DC, DD, DE, DF, DG, DH, DI, DJ, DK, DL, DM, DN, DO, DP, DQ, DR, DS, DT, DU, DV, DW, DX, DY, DZ, EA, EB, EC, ED, EE, EF, EG, EH, EI, EJ, EK, EL, EM, EN, EO, EP, EQ, ER, ES, ET, EU, EV, EW, EX, EY, EZ, FA, FB, FC, FD, FE, FF, FG, FH, FI, FJ, FK, FL, FM, FN, FO, FP, FQ, FR, FS, FT, FU, FV, FW, FX, FY, FZ, GA, GB, GC, GD, GE, GF, GG, GH, GI, GJ, GK, GL, GM, GN, GO, GP, GQ, GR, GS, GT, GU, GV, GW, GX, GY, GZ, HA, HB, HC, HD, HE, HF, HG, HH, HI, HJ, HK, HL, HM, HN, HO, HP, HQ, HR, HS, HT, HU, HV, HW, HX, HY, HZ, IA, IB, IC, ID, IE, IF, IG, IH, II, IJ, IK, IL, IM, IN, IO, IP, IQ, IR, IS, IT, IU, IV, IW, IX, IY, IZ, JA, JB, JC, JD, JE, JF, JG, JH, JI, JJ, JK, JL, JM, JN, JO, JP, JQ, JR, JS, JT, JU, JV, JW, JX, JY, JZ, KA, KB, KC, KD, KE, KF, KG, KH, KI, KJ, KK, KL, KM, KN, KO, KP, KQ, KR, KS, KT, KU, KV, KW, KX, KY, KZ, LA, LB, LC, LD, LE, LF, LG, LH, LI, LJ, LK, LL, LM, LN, LO, LP, LQ, LR, LS, LT, LU, LV, LW, LX, LY, LZ, MA, MB, MC, MD, ME, MF, MG, MH, MI, MJ, MK, ML, MM, MN, MO, MP, MQ, MR, MS, MT, MU, MV, MW, MX, MY, MZ, NA, NB, NC, ND, NE, NF, NG, NH, NI, NJ, NK, NL, NM, NO, NP, NQ, NR, NS, NT, NU, NV, NW, NX, NY, NZ, OA, OB, OC, OD, OE, OF, OG, OH, OI, OJ, OK, OL, OM, ON, OO, OP, OQ, OR, OS, OT, OU, OV, OW, OX, OY, OZ, PA, PB, PC, PD, PE, PF, PG, PH, PI, PJ, PK, PL, PM, PN, PO, PP, PQ, PR, PS, PT, PU, PV, PW, PX, PY, PZ, QA, QB, QC, QD, QE, QF, QG, QH, QI, QJ, QK, QL, QM, QN, QO, QP, QQ, QR, QS, QT, QU, QV, QW, QX, QY, QZ, RA, RB, RC, RD, RE, RF, RG, RH, RI, RJ, RK, RL, RM, RN, RO, RP, RQ, RR, RS, RT, RU, RV, RW, RX, RY, RZ, SA, SB, SC, SD, SE, SF, SG, SH, SI, SJ, SK, SL, SM, SN, SO, SP, SQ, SR, SS, ST, SU, SV, SW, SX, SY, SZ, TA, TB, TC, TD, TE, TF, TG, TH, TI, TJ, TK, TL, TM, TN, TO, TP, TQ, TR, TS, TT, TU, TV, TW, TX, TY, TZ, UA, UB, UC, UD, UE, UF, UG, UH, UI, UJ, UK, UL, UM, UN, UO, UP, UQ, UR, US, UT, UY, UZ, VA, VB, VC, VD, VE, VF, VG, VH, VI, VJ, VK, VL, VM, VN, VO, VP, VQ, VR, VS, VT, VY, VZ, WA, WB, WC, WD, WE, WF, WG, WH, WI, WJ, WK, WL, WM, WN, WO, WP, WQ, WR, WS, WT, WY, WZ, XA, XB, XC, XD, XE, XF, XG, XH, XI, XJ, XK, XL, XM, XN, XO, XP, XQ, XR, XS, XT, XU, XV, XW, XX, XY, XZ, YA, YB, YC, YD, YE, YF, YG, YH, YI, YJ, YK, YL, YM, YN, YO, YP, YQ, YR, YS, YT, YU, YV, YW, YX, YZ, ZA, ZB, ZC, ZD, ZE, ZF, ZG, ZH, ZI, ZJ, ZK, ZL, ZM, ZN, ZO, ZP, ZQ, ZR, ZS, ZT, ZU, ZV, ZW, ZX, ZY, ZZ

Land District: Wellington	Lots 1, 103-105, 112, 203, 600-642, 653-671, 691-699 being a subdivision of Lot 1 DP 394178	Surveyor: Brett William Home Firm: Harrison Grierson Consultants Ltd (AG) Survey Date: 19/05/2008	Digital Survey Plan DP 405897
Digitally Generated Plan Generated on: 18/07/2008 10:56am Page 61 of 68		Deposited on: 1/07/2008	



Diag. AB
Non Primary

Areas marked B, C, D, E, F, G, H, I, J, K, L, M,
N, O, P, Q, R, S, T, U, V, W, X, Y, Z, AA, AB, AC,
AD, AE, AG, AH, AI, AM, AN, AO, AP, AR, AS, AT,
AX, AY, AZ, BA, BB, BF, BH, BL, BO, BR, BQ, BV,
CA, CB, CC, CD, YB & YC are subject to
building restrictions



T 10/16

Land District: Wellington

Digitally Generated Plan

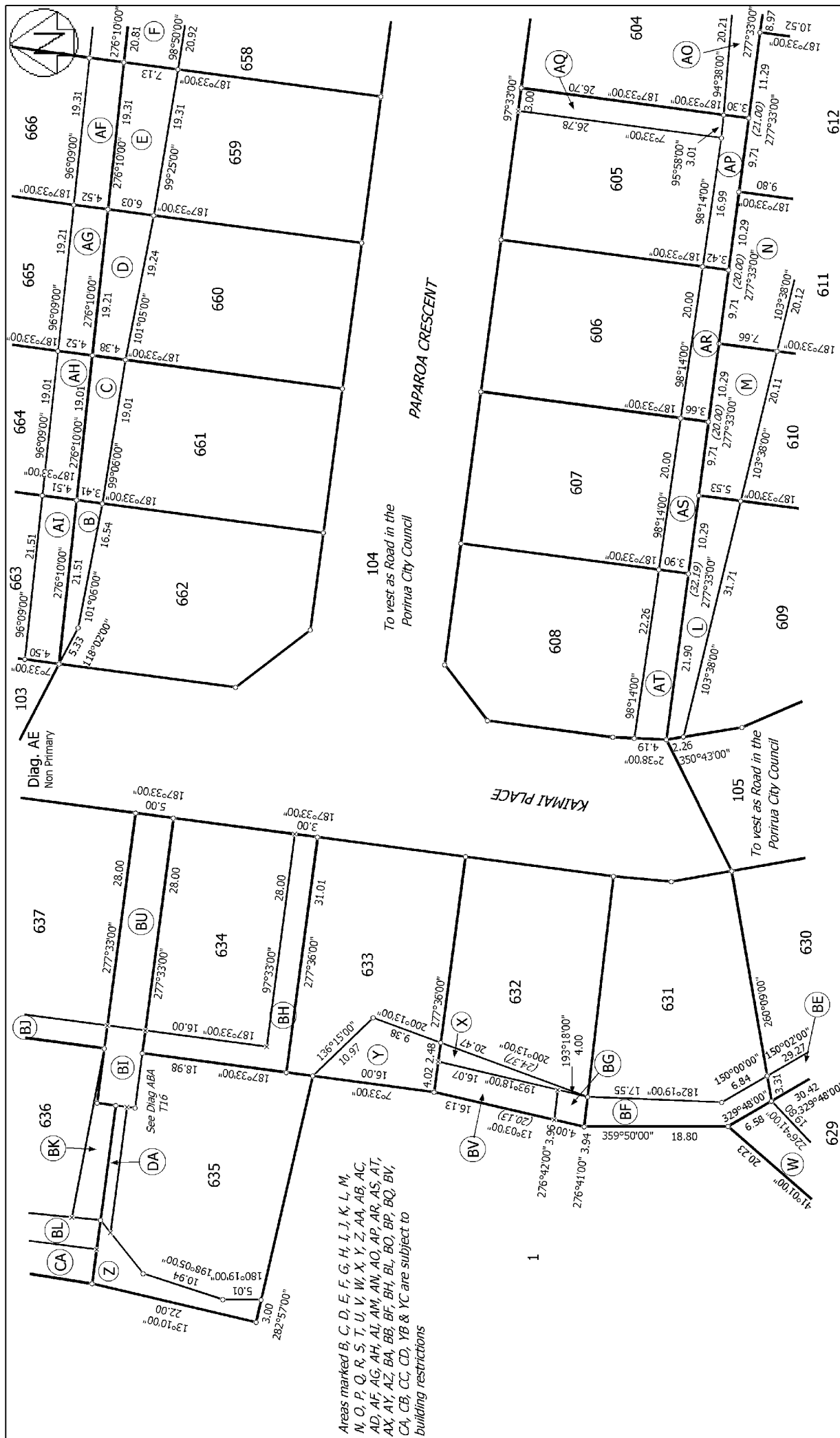
Generated on: 18/07/2008 10:56am Page 62 of 68

Lots 1,103-105,112,203,600-642,653-671,691-699 being a subdivision of Lot 1 DP
394178

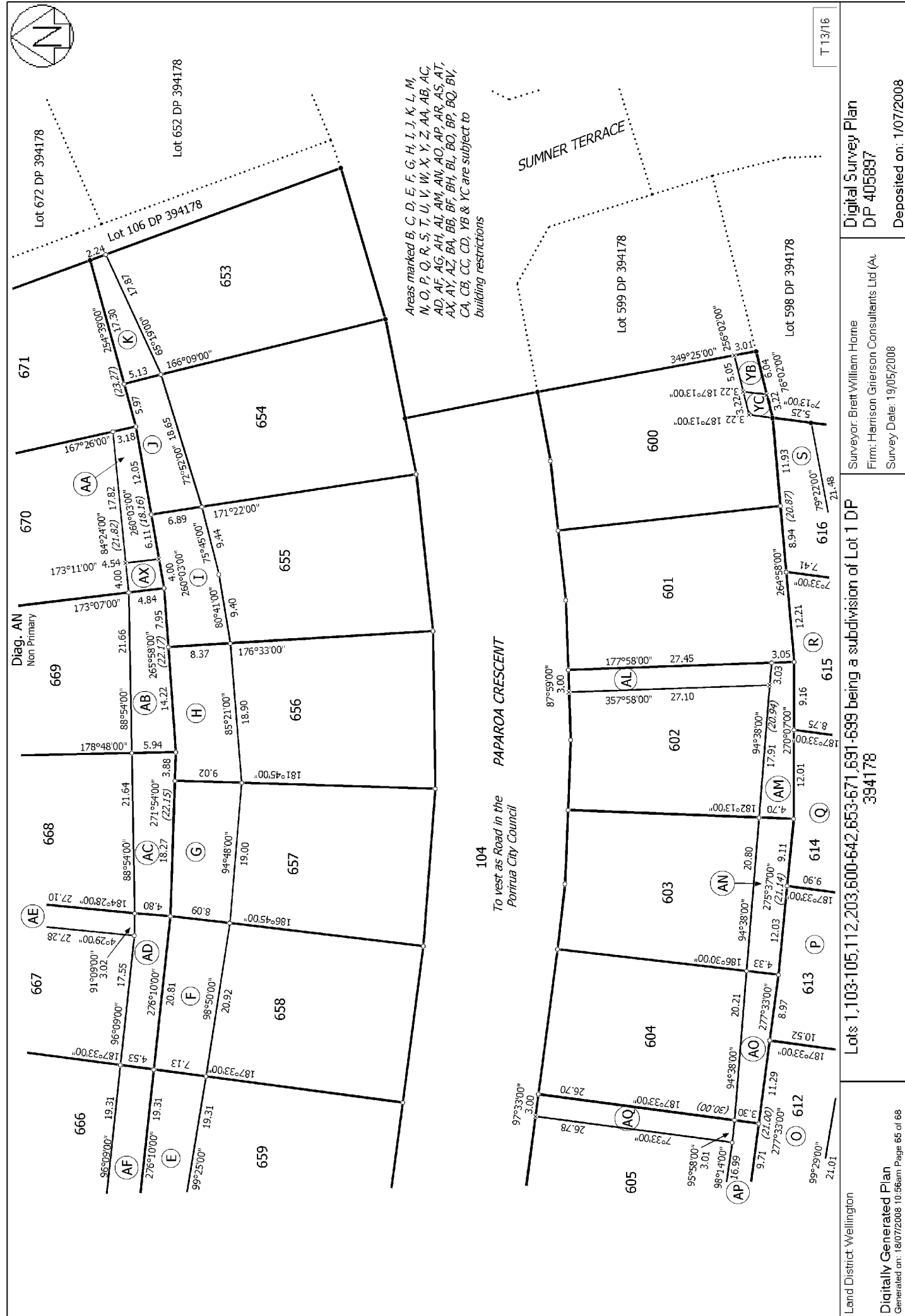
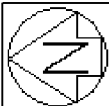
Surveyor: Brett William Home
Firm: Harrison Grierson Consultants Ltd (A.
Survey Date: 19/05/2008

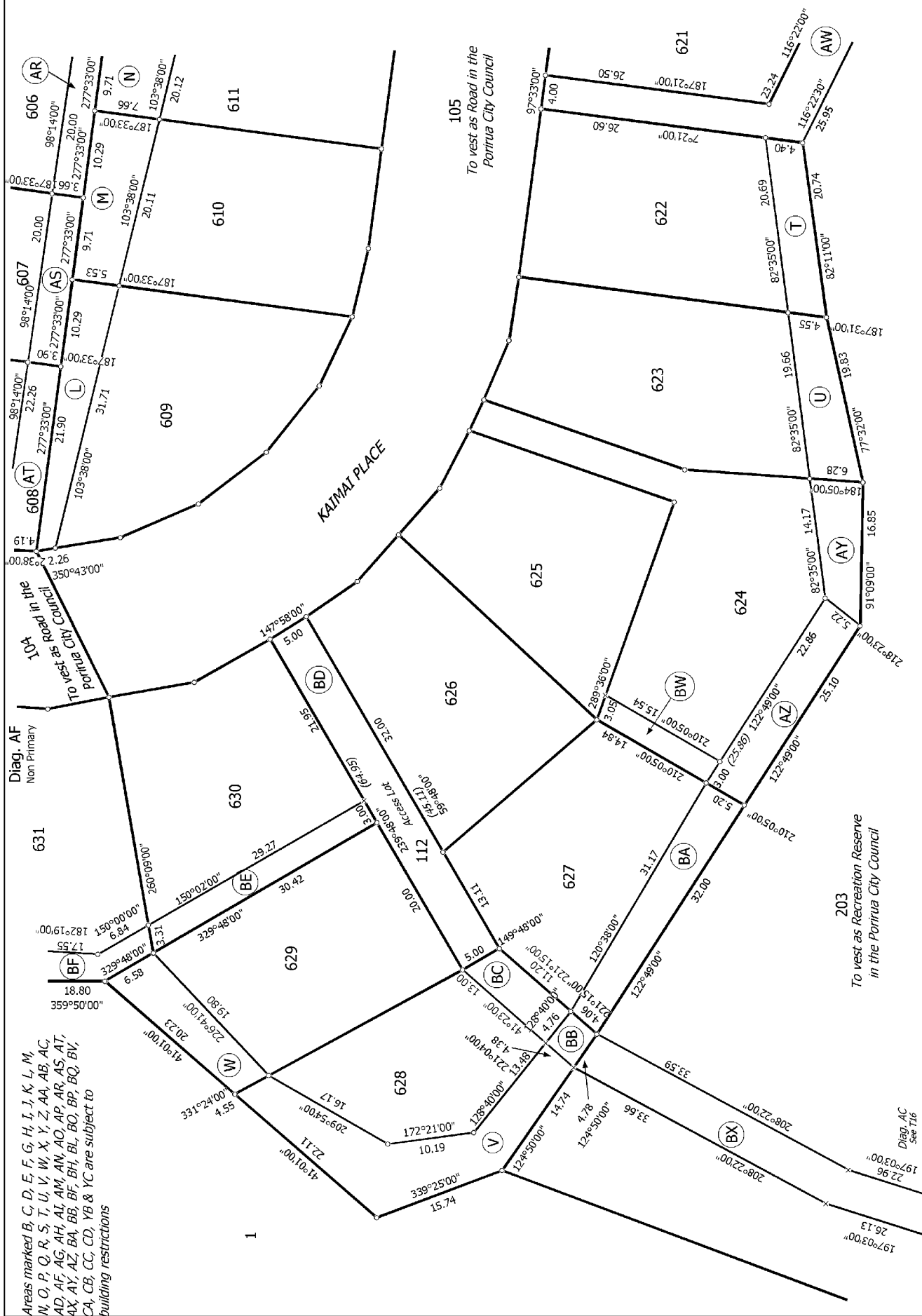
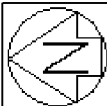
Digital Survey Plan
DP 405897

Deposited on: 1/07/2008



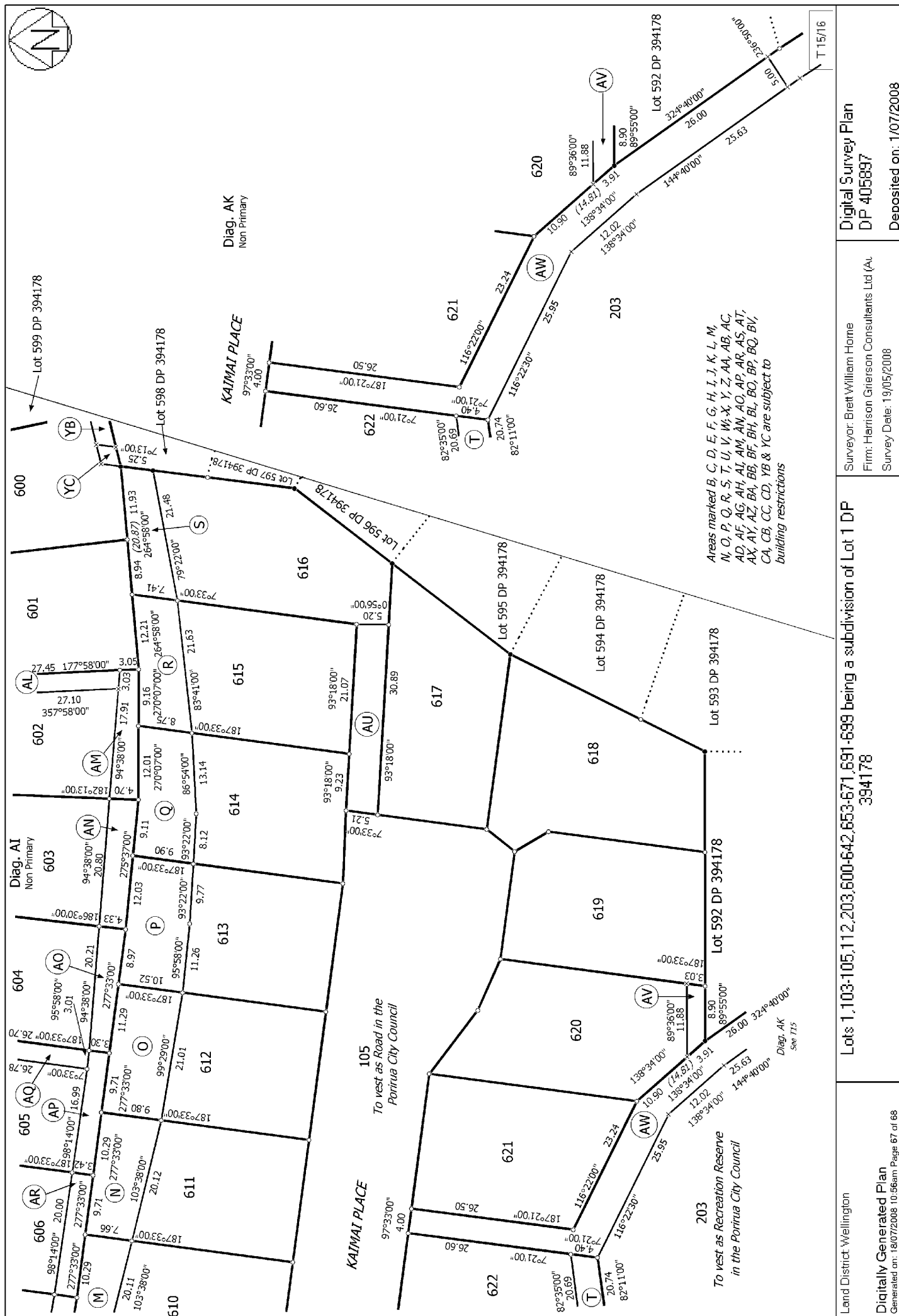
<p>Land District: Wellington</p> <p>Digitally Generated Plan</p> <p>Generated on: 18/07/2008 10:56am Page 64 of 68</p>	<p>Lots 1,103-105,112,203,600-642,653-671,691-699 being a subdivision of Lot 1 DP 394178</p>	<p>Surveyor: Brett William Home Firm: Harrison Grierson Consultants Ltd (A) Survey Date: 19/05/2008</p>	<p>Digital Survey Plan DP 405897</p> <p>Deposited on: 1/07/2008</p>
---	--	---	--

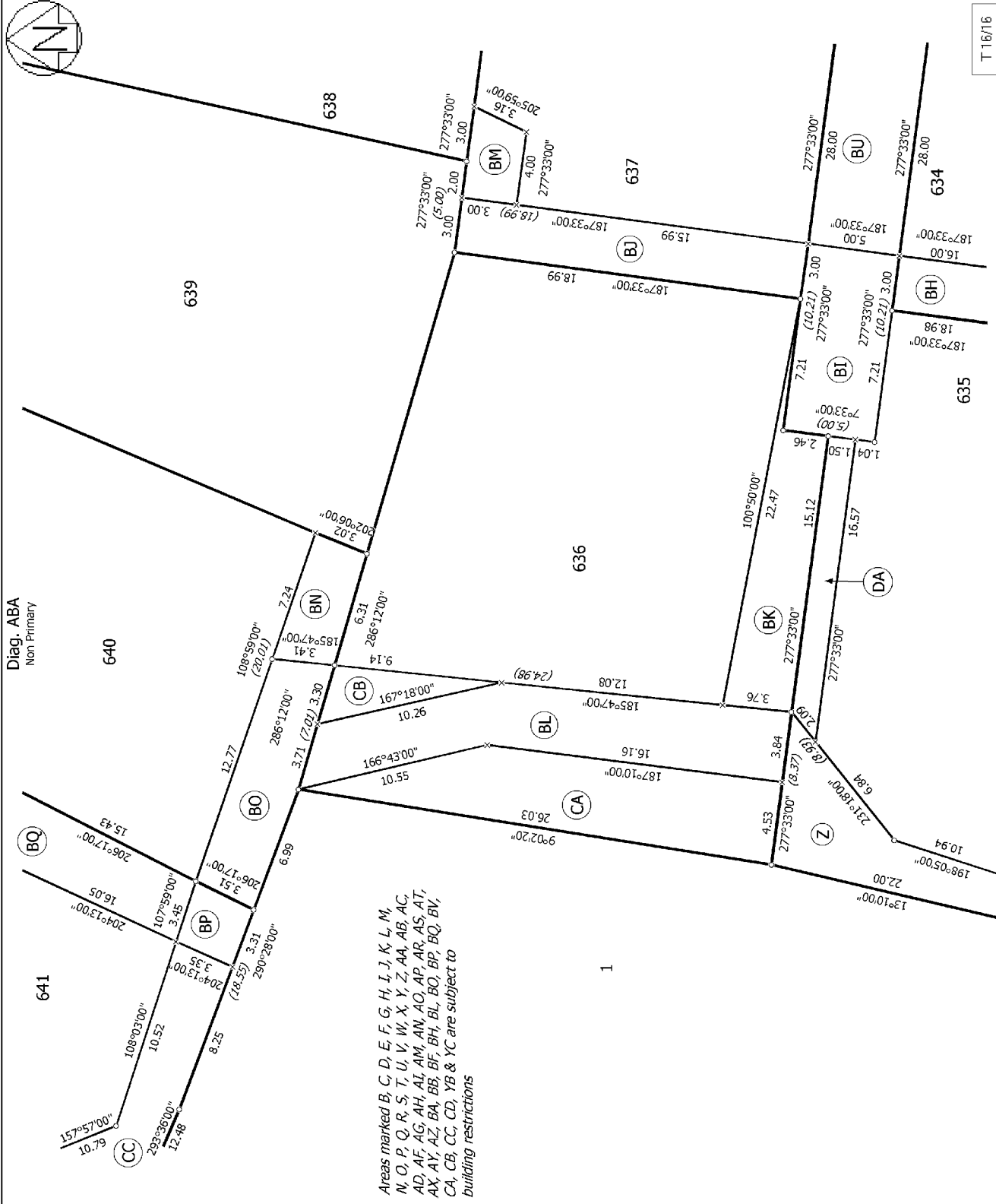
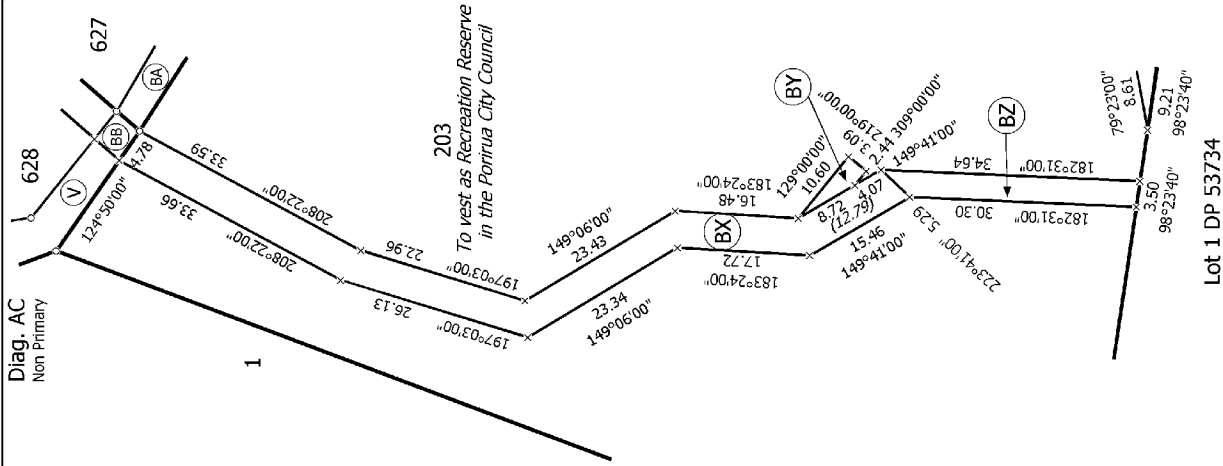




T 14/16

Land District Wellington	Lots 1,103-105,112,203,600-642,653-671,691-699 being a subdivision of Lot 1 DP 394178	Surveyor: Brett William Home Firm: Harrison Grierson Consultants Ltd (A) Survey Date: 19/05/2008	Digital Survey Plan DP 405897 Deposited on: 1/07/2008
Digitally Generated Plan Generated on: 18/07/2008 10:56am Page 66 of 68			





Land District Wellington

Digitally Generated Plan

Generated on: 18/07/2008 10:56am Page 68 of 68

Lots 1,103-105,112,203,600-642,653-671,691-699 being a subdivision of Lot 1 DP

394178

Surveyor: Brett William Home
Firm: Harrison Grierson Consultants Ltd (A)

Survey Date: 19/05/2008

Digital Survey Plan

DP 405897

Deposited on: 1/07/2008

T 16/16