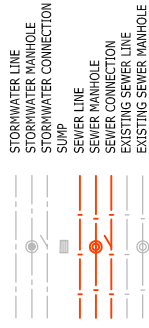


THIS DRAWING AND DESIGN REMAINS THE PROPERTY OF AND MAY NOT BE REPRODUCED OR ALTERED WITHOUT THE WRITTEN PERMISSION OF HARRISON GRIERSON CONSULTANTS LIMITED. NO LIABILITY SHALL BE ACCEPTED FOR UNAUTHORIZED USE OF THIS DRAWING.



NOTE:

- All house connections are 100mm dia uPVC.
- All sewer main pipes are 150mm dia uPVC unless shown otherwise.
- All positions and levels are accurate at time of survey.
- Levels are in terms of Wellington Vertical Datum 1953.
- Coordinates are in terms of NZGD2000 - Wellington Circuit.
- All distances shown are horizontal distances, in metres.
- Work completed as at 14 April 2008.
- Position of house connections based on information supplied by Higgins Contractors Wellington.

WARNING: Levels, locations and dimensions of drainage services shown on these plans may not be accurate due to circumstances not notified to Harrison Grierison Consultants Ltd. A physical check should be made on all levels, locations and dimensions before starting design or works.

HARRISON GRIERSON
 CONSULTING ENGINEERS SURVEYORS PLANNERS
 Level 16 Grand Pinnacle Tower 2-6 Gifford Terrace Wellington Ph: 04 385 0005 Fax: 04 385 0006

DESIGNED:	DATE:	SIGNATURE:
DRAWN:	DATE:	SIGNATURE:
CHECKED:	DATE:	SIGNATURE:
APPROVED:	DATE:	SIGNATURE:
PROJECT:	CARRUS LIMITED AOTEA BLOCK - PORIRUA STAGES 7A & 7B & 7C	

TITLE:
 SANITARY SEWER RETICULATION
 AS BUILT PLANS
 SHEET 1 OF 2

DESIGNED:	DATE:	SIGNATURE:	DATE:	SIGNATURE:
DRAWN:	DATE:	SIGNATURE:	DATE:	SIGNATURE:
CHECKED:	DATE:	SIGNATURE:	DATE:	SIGNATURE:
APPROVED:	DATE:	SIGNATURE:	DATE:	SIGNATURE:
PROJECT:	CARRUS LIMITED AOTEA BLOCK - PORIRUA STAGES 7A & 7B & 7C			

PROJECT NO:	1850-000633-01	SCALE:	1:500 @ A1 1:1000 @ A3
DRAWING NO:	000633-7-AB402-SS	AS BUILT	
REV			
			A



MH No	mN	mE	LL	IL	Depth
SSMH B3	818911.55	407148.64	65.67	63.86	1.81
SSMH B4	818921.63	407129.28	66.09	64.24	1.85
SSMH B5	818951.43	407132.69	69.13	67.06	2.07
SSMH B6	818964.62	407134.40	69.17	67.28	1.89
SSMH B7	818956.45	407195.62	71.52	69.65	1.87
SSMH C1	818969.35	407105.95	69.67	68.11	1.56
SSMH K1A	818840.23	407013.99	23.41	21.91	1.50
SSMH K1	818854.52	407007.64	25.42	22.96	2.46
SSMH K2	818872.57	407008.17	36.57	35.34	1.23
SSMH K3	818892.01	406997.11	44.00	42.03	1.97
SSMH K5	818914.11	407003.75	50.99	49.19	1.80
SSMH K6	818944.97	407019.51	65.14	61.89	3.25
SSMH K7	818953.44	407028.58	66.18	63.68	2.50
SSMH K8	818967.47	407049.28	68.53	66.00	2.53
SSMH K9	818979.97	407071.66	70.48	68.10	2.38
SSMH K10	819011.73	407075.28	72.30	70.64	1.66
SSMH K11	819053.15	407081.00	75.73	72.67	3.06
SSMH K12	819092.17	407085.76	79.56	77.92	1.64
SSMH K13	819116.53	407089.37	80.98	78.89	2.09
SSMH K14	819141.84	407095.05	81.94	79.71	2.23
SSMH K15	819128.70	407193.76	87.63	85.95	1.68
SSMH L1	818914.83	407070.63	65.65	63.98	1.67
SSMH M1	819001.25	407029.74	70.12	67.87	2.25
SSMH M2	819019.90	407030.46	71.79	69.94	1.85
SSMH N1	819000.55	407157.83	76.99	75.10	1.89
SSMH O1	819045.25	407142.60	77.47	76.29	1.18
SSMH P1	819060.23	407036.97	76.15	73.35	2.80
SSMH P2	819079.96	407039.64	77.07	73.50	3.57
SSMH P3	819084.80	407014.30	75.74	73.84	1.90
SSMH P4	819098.38	407015.65	75.88	73.98	1.90
SSMH P5	819111.19	407012.51	76.25	74.14	2.11
SSMH P6	819114.56	407004.72	76.11	74.26	1.85
SSMH P7	819130.95	407012.61	77.35	74.56	2.79
SSMH Q1	819098.72	407041.64	78.32	76.71	1.61
SSMH R1	819081.15	407185.17	86.10	83.94	2.16



SEE DETAIL - SCALE 1:1000



ASSOCIATION OF CONSULTING ENGINEERS NEW ZEALAND

ISO 9001 QUALITY ASSURED

THIS DRAWING AND DESIGN REMAINS THE PROPERTY OF AND MAY NOT BE REPRODUCED OR ALTERED WITHOUT THE WRITTEN PERMISSION OF HARRISON GRIERSON CONSULTANTS LIMITED. NO LIABILITY SHALL BE ACCEPTED FOR UNAUTHORIZED USE OF THIS DRAWING.

LEGEND

- STORMWATER LINE
- STORMWATER MANHOLE
- STORMWATER CONNECTION
- SURVEY LINE
- SEWER MANHOLE
- SEWER CONNECTION
- EXISTING SEWER LINE
- EXISTING SEWER MANHOLE

NOTE:

1. All house connections are 100mm dia uPVC.
2. All sewer main pipes are 150mm dia uPVC unless shown otherwise.
3. All positions and levels are accurate at time of survey.
4. Levels are in terms of Wellington Vertical Datum 1953.
5. Coordinates are in terms of NZGD2000 - Wellington Circuit.
6. All distances shown are horizontal distances, in metres.
7. Work completed as at 14 April 2008.
8. Position of house connections based on information supplied by Higgins Contractors Wellington.

WARNING: Levels, locations and dimensions of drainage services shown on these plans may not be accurate due to circumstances not notified to Harrison Grierison Consultants Ltd. A physical check should be made on all levels, locations and dimensions before starting design or works.



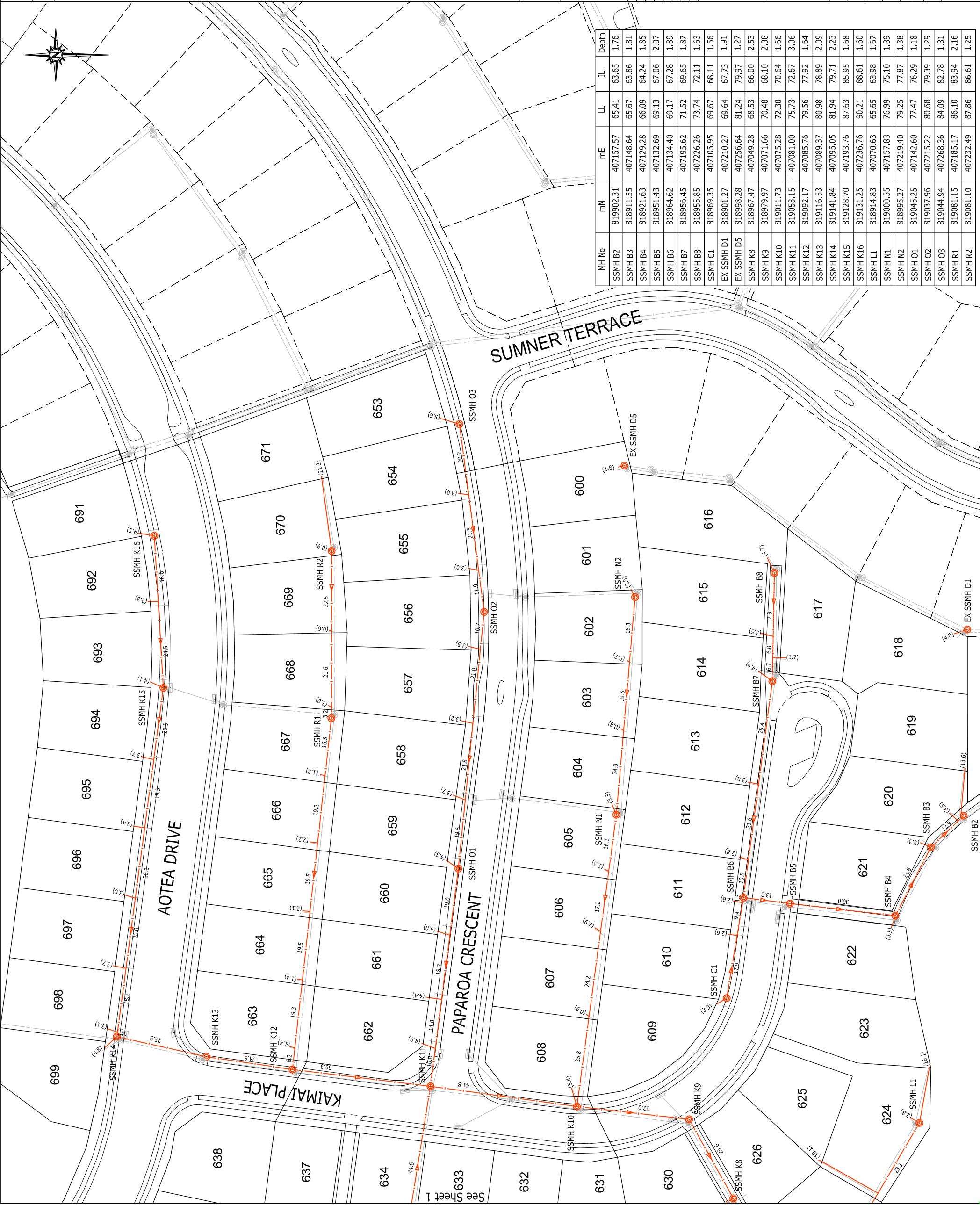
HARRISON GRIERISON
CONSULTING ENGINEERS SURVEYORS PLANNERS
Level 15 Grand Pinnacle Tower 2-6 Gifford Terrace Wellington Ph 04 385 0005 Fax 04 385 0006

A	INITIAL RELEASE	JMS	27/05/2008
	REF. AMENDMENT	BY	DATE

CARRUS LIMITED
AOTEA BLOCK - PORIRUA
STAGES 7A & 7B & 7C

TITLE:
SANITARY SEWER RETICULATION
AS BUILT PLANS
SHEET 2 OF 2

DESIGNED:	DATE:	SIGNATURE:	DATE:	27/05/2008
DRAWN:	DATE:	SIGNATURE:	DATE:	05/2/2008
CHECKED:	DATE:	SIGNATURE:	DATE:	13/05/2008
APPROVED:	DATE:	SIGNATURE:	DATE:	27/05/2008
PROJECT NO:	1850-000633-01			
SCALE:	1:500 @ A1 1:1000 @ A3			
DRAWING NO:	000633-7-AB403-SS			
AS BUILT	AS BUILT			
REV	A			



MH No	mN	mE	LL	IL	Depth
SSMH B2	819902.31	407157.57	65.41	63.65	1.76
SSMH B3	818911.55	407148.64	65.67	63.86	1.81
SSMH B4	818921.63	407129.28	66.09	64.24	1.85
SSMH B5	818951.43	407132.69	69.13	67.06	2.07
SSMH B6	818964.62	407134.40	69.17	67.28	1.89
SSMH B7	818956.45	407195.62	71.52	69.65	1.87
SSMH B8	818955.85	407226.26	73.74	72.11	1.63
SSMH C1	818969.35	407105.95	69.67	68.11	1.56
EX SSMH D1	818901.27	407210.27	69.64	67.73	1.91
EX SSMH D5	818998.28	407256.64	81.24	79.97	1.27
SSMH K8	818967.47	407049.28	68.53	66.00	2.53
SSMH K9	818979.97	407071.66	70.48	68.10	2.38
SSMH K10	819011.73	407075.28	72.30	70.64	1.66
SSMH K11	819053.15	407081.00	75.73	72.67	3.06
SSMH K12	819092.17	407085.76	79.56	77.92	1.64
SSMH K13	819116.53	407089.37	80.98	78.89	2.09
SSMH K14	819141.84	407095.05	81.94	79.71	2.23
SSMH K15	819128.70	407193.76	87.63	85.95	1.68
SSMH K16	819131.25	407236.76	90.21	88.61	1.60
SSMH L1	818914.83	407070.63	65.65	63.98	1.67
SSMH N1	819000.55	407157.83	76.99	75.10	1.89
SSMH N2	818995.27	407219.40	79.25	77.87	1.38
SSMH O1	819045.25	407142.60	77.47	76.29	1.18
SSMH O2	819037.96	407215.22	80.68	79.39	1.29
SSMH O3	819044.94	407268.36	84.09	82.78	1.31
SSMH R1	819081.15	407185.17	86.10	83.94	2.16
SSMH R2	819081.10	407232.49	87.86	86.61	1.25



ISO 9001 QUALITY ASSURED

THIS DRAWING AND DESIGN REMAINS THE PROPERTY OF AND MAY NOT BE REPRODUCED OR ALTERED WITHOUT THE WRITTEN PERMISSION OF HARRISON GRIERSON CONSULTANTS LIMITED. NO LIABILITY SHALL BE ACCEPTED FOR UNAUTHORIZED USE OF THIS DRAWING.

LEGEND

- STORMWATER LINE
- STORMWATER MANHOLE
- STORMWATER CONNECTION
- SUMP
- SEWER LINE
- SEWER MANHOLE
- SEWER CONNECTION
- EXISTING STORMWATER LINE
- EXISTING STORMWATER MANHOLE
- SECONDARY FLOW PATH

NOTE:

- All house connections are 100mm dia uPVC.
- All single sump leads are 225mm dia uPVC.
- All double sump leads are 300mm dia uPVC.
- All positions and levels are accurate as at time of survey.
- Levels are in terms of Wellington Vertical Datum 1953.
- Coordinates are in terms of NZGD2000 - Wellington Circuit.
- Work completed as at 14 April 2008.
- Position of house connections based on information supplied by Higgins Contractors Wellington.
- All distances shown are horizontal distances, in metres.

STORMWATER LINE - PIPE MATERIALS:
(unless shown otherwise)

- 150 dia - uPVC
- 225 dia - uPVC
- 300 dia - uPVC
- 450 dia - RCRRJ Class X
- 525 dia - RCRRJ Class X

WARNING: Levels, locations and dimensions of drainage services shown on these plans may not be accurate due to circumstances not notified to Harrison Grierison Consultants Ltd. A physical check should be made on all levels, locations and dimensions before starting design or works.

HARRISON GRIERSON
CONSULTING ENGINEERS SURVEYORS PLANNERS
Level 15 Grand Pinnacle Tower 2-6 Giffner Terrace Wellington Ph: 04 385 0005 Fax: 04 385 0006

INITIAL RELEASE	JMS	27/05/2008
REF	AMENDMENT	BY
DATE		

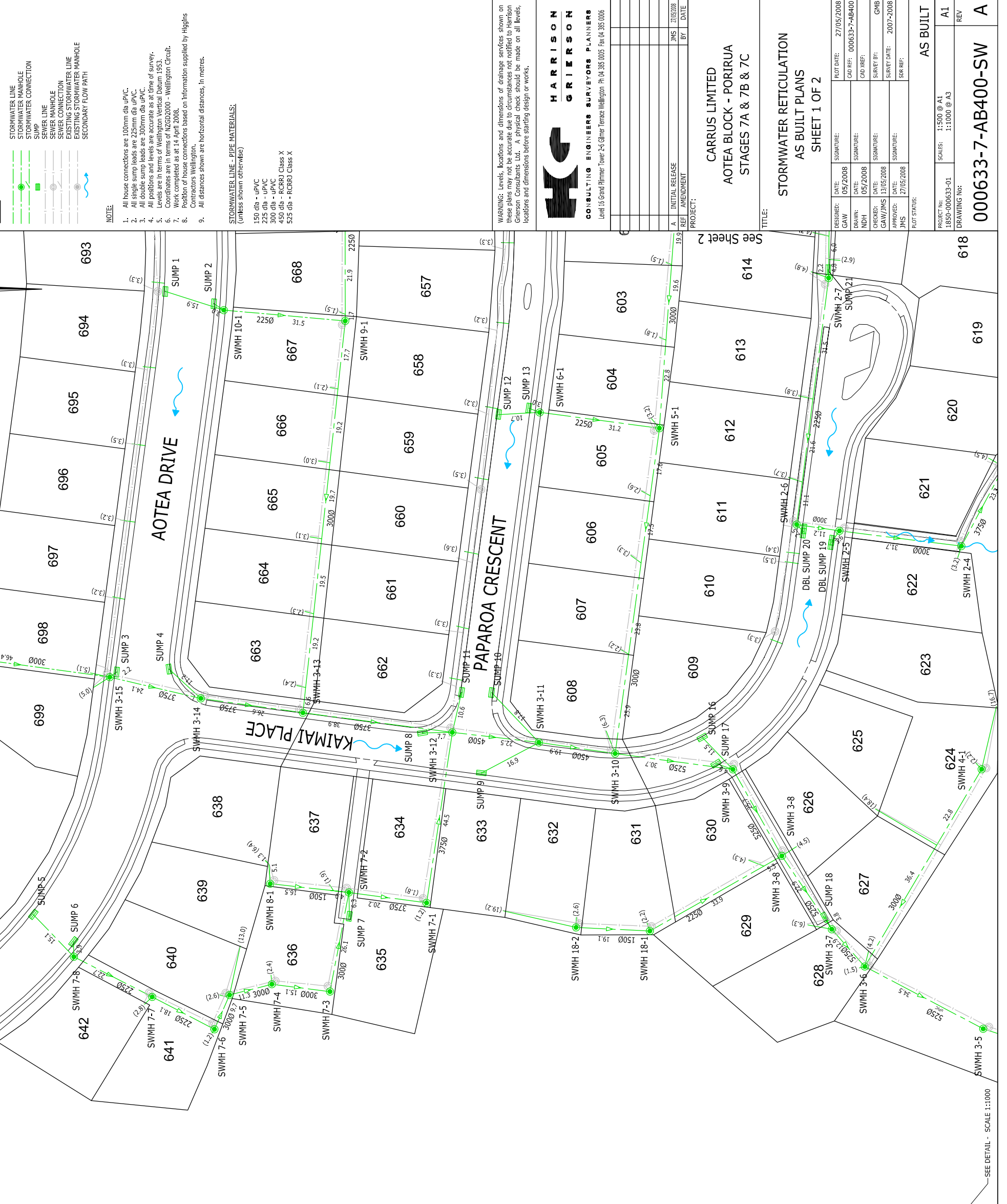
PROJECT: CARRUS LIMITED
AOTEA BLOCK - PORIRUA
STAGES 7A & 7B & 7C

TITLE: STORMWATER RETICULATION
AS BUILT PLANS
SHEET 1 OF 2

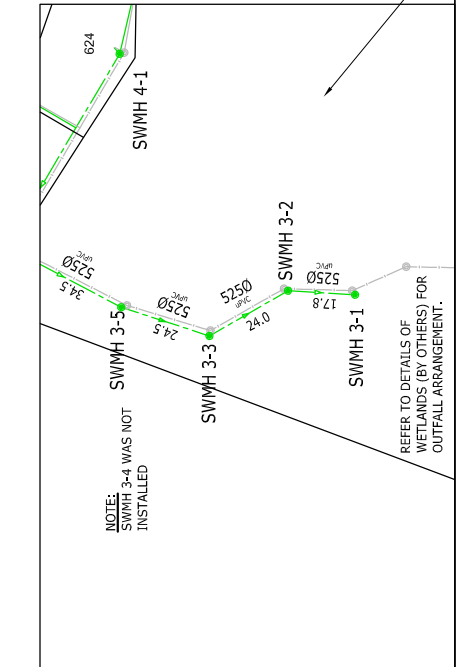
DESIGNED:	DATE:	SIGNATURE:	PLANT DATE:
GAW	05/2/2008		27/05/2008
DRAWN:	DATE:	SIGNATURE:	CAD REF:
NDH	05/2/2008		000633-7-AB400
CHECKED:	DATE:	SIGNATURE:	CAD REF:
GAW/JMS	13/05/2008		GMB
APPROVED:	DATE:	SIGNATURE:	SHEET DATE:
JMS	27/05/2008		2007-2008
PLANT STATUS:			SR REF:

PROJECT NO:	SCALE:	AS BUILT
1850-000633-01	1:500 @ A1	A1
	1:1000 @ A3	REV

000633-7-AB400-SW
DRAWING No: A



MH No	mN	mE	LL	IL	Depth
SWMH 2-4	818921.23	407127.96	66.03	64.26	1.77
SWMH 2-5	818952.70	407131.88	69.06	67.17	1.89
SWMH 2-6	818963.76	407133.53	69.15	67.30	1.85
SWMH 2-7	818955.48	407197.23	71.59	69.79	1.80
SWMH 3-1	818853.78	407006.57	25.36	23.18	2.18
SWMH 3-2	818871.51	407007.64	36.50	34.52	1.98
SWMH 3-3	818892.29	406995.66	44.06	42.20	1.86
SWMH 3-5	818915.60	407003.27	51.40	49.56	1.84
SWMH 3-6	818946.18	407019.36	65.25	62.23	3.02
SWMH 3-7	818954.70	407028.98	66.20	63.88	2.32
SWMH 3-8	818967.60	407047.93	68.46	65.88	2.58
SWMH 3-9	818980.23	407070.28	70.55	67.90	2.65
SWMH 3-10	819010.63	407074.37	72.17	70.54	1.63
SWMH 3-11	819030.32	407077.24	73.90	71.64	2.26
SWMH 3-12	819052.68	407079.84	75.72	72.83	2.89
SWMH 3-13	819091.25	407084.91	79.51	77.89	1.62
SWMH 3-14	819117.62	407088.62	80.98	78.96	2.02
SWMH 3-15	819141.13	407094.11	81.82	79.67	2.15
SW INLET 3-16	819187.26	407100.47	-	83.76	-
SWMH 7-1	819059.32	407035.80	76.03	73.28	2.75
SWMH 7-2	819079.38	407038.48	76.99	73.50	3.49
SWMH 7-3	819084.27	407012.88	75.61	73.81	1.80
SWMH 7-4	819099.27	407014.78	75.87	74.01	1.86
SWMH 7-5	819110.20	407012.00	76.09	74.08	2.01
SWMH 7-6	819114.10	407003.13	75.99	74.24	1.75
SWMH 7-7	819130.17	407011.51	77.29	74.52	2.77
SWMH 7-8	819150.40	407021.88	78.45	76.63	1.82
SWMH 18-1	819001.67	407028.53	70.14	67.82	2.32
SWMH 18-2	819020.73	407029.46	71.72	70.00	1.72
SWMH 4-1	818916.02	407070.30	65.69	63.95	1.74
SWMH 5-1	818999.22	407158.42	76.97	75.17	1.80
SWMH 6-1	819030.12	407162.50	78.42	77.00	1.42
SWMH 8-1	819099.71	407040.75	78.37	76.79	1.58
SWMH 9-1	819080.33	407186.14	86.01	83.99	2.02
SWMH 10-1	819111.68	407188.92	87.43	85.70	1.73
SUMP 1	819126.80	407193.75	87.39	-	-
SUMP 2	819114.25	407190.57	87.28	-	-
SUMP 3	819139.37	407095.43	81.72	-	-
SUMP 4	819125.82	407096.19	81.80	-	-
SUMP 5	819160.90	407032.83	78.31	-	-
SUMP 6	819150.50	407025.72	78.42	-	-
SUMP 7	819079.28	407032.33	76.72	-	-
SUMP 8	819060.39	407079.70	76.45	-	-
SUMP 9	819045.22	407069.36	74.92	-	-
SUMP 10	819042.54	407090.12	75.08	-	-
SUMP 11	819050.29	407090.18	75.05	-	-
SUMP 12	819040.73	407162.01	78.06	-	-
SUMP 13	819032.94	407163.61	78.17	-	-
SUMP 16	818988.11	407078.49	70.51	-	-
SUMP 17	818984.54	407071.69	70.57	-	-
SUMP 18	818956.47	407032.07	66.55	-	-
DBL SUMP 19	818954.72	407129.40	68.87	-	-
DBL SUMP 20	818961.96	407132.45	68.87	-	-
SUMP 21	818955.73	407199.32	71.60	-	-



REFER TO DETAILS OF WETLANDS (BY OTHERS) FOR OUTFALL ARRANGEMENT.

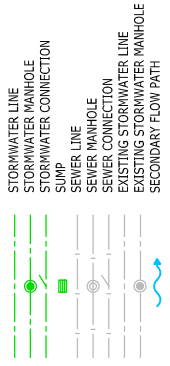


ASSOCIATION OF CONSULTING ENGINEERS NEW ZEALAND

ISO 9001 QUALITY ASSURED

THIS DRAWING AND DESIGN REMAINS THE PROPERTY OF AND MAY NOT BE REPRODUCED OR ALTERED WITHOUT THE WRITTEN PERMISSION OF HARRISON GRIERSON CONSULTANTS LIMITED. NO LIABILITY SHALL BE ACCEPTED FOR UNAUTHORIZED USE OF THIS DRAWING.

LEGEND



NOTE:

- All house connections are 100mm dia uPVC.
- All single sump leads are 225mm dia uPVC.
- All double sump leads are 300mm dia uPVC.
- All positions and levels are accurate as at time of survey.
- Levels are in terms of Wellington Vertical Datum 1953.
- Coordinates are in terms of NZGD2000 - Wellington Circuit.
- Work completed as at 14 April 2008.
- Position of house connections based on information supplied by Higgins Contractors Wellington.
- All distances shown are horizontal distances, in metres.

STORMWATER LINE - PIPE MATERIALS:

- 150 dia - uPVC
- 225 dia - uPVC
- 300 dia - uPVC
- 450 dia - RCRRJ Class X
- 525 dia - RCRRJ Class X

WARNING: Levels, locations and dimensions of drainage services shown on these plans may not be accurate due to circumstances not notified to Harrison Grierison Consultants Ltd. A physical check should be made on all levels, locations and dimensions before starting design or works.



HARRISON GRIERSON CONSULTING ENGINEERS SURVEYORS PLANNERS

Level 15 Grand Pinnacle Tower 2-6 Gifford Terrace Wellington Ph: 04 385 0005 Fax: 04 385 0006

A	INITIAL RELEASE	JMS	27/05/2008
REF	AMENDMENT	BY	DATE

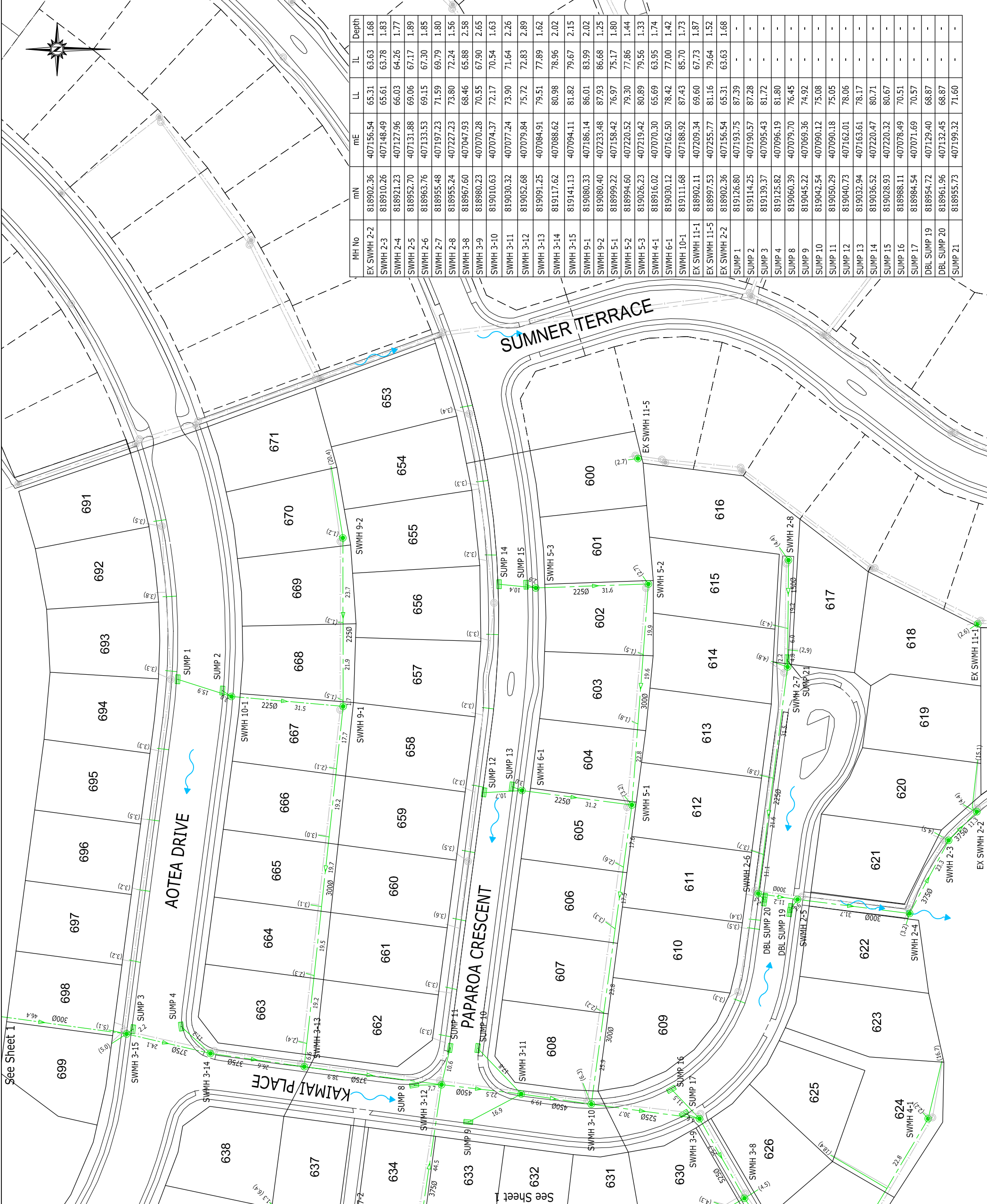
PROJECT: CARRUS LIMITED
AOTEA BLOCK - PORIRUA
STAGES 7A & 7B & 7C

TITLE: STORMWATER RETICULATION
AS BUILT PLANS
SHEET 2 OF 2

DESIGNED:	DATE:	SIGNATURE:	DATE:
GAW	05/2/2008	[Signature]	27/05/2008
DRAWN:	DATE:	SIGNATURE:	DATE:
NDH	05/2/2008	[Signature]	27/05/2008
CHECKED:	DATE:	SIGNATURE:	DATE:
JMS	13/05/2008	[Signature]	27/05/2008
APPROVED:	DATE:	SIGNATURE:	DATE:
JMS	27/05/2008	[Signature]	27/05/2008

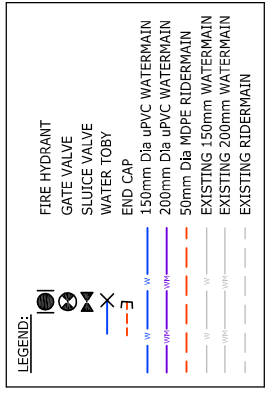
AS BUILT
PROJECT No: 1850-000633-01
SCALES: 1:500 @ A1
1:1000 @ A3
DRAWING No: 000633-7-AB401-SW

REV A1
REV A



MH No	mN	mE	LL	IL	Depth
EX SWMH 2-2	818902.36	407156.54	65.31	63.63	1.68
SWMH 2-3	818910.26	407148.49	65.61	63.78	1.83
SWMH 2-4	818921.23	407127.96	66.03	64.26	1.77
SWMH 2-5	818952.70	407131.88	69.06	67.17	1.89
SWMH 2-6	818963.76	407133.53	69.15	67.30	1.85
SWMH 2-7	818955.48	407197.23	71.59	69.79	1.80
SWMH 2-8	818955.24	407227.23	73.80	72.24	1.56
SWMH 3-8	818967.60	407047.93	68.46	65.88	2.58
SWMH 3-9	818980.23	407070.28	70.55	67.90	2.65
SWMH 3-10	819010.63	407074.37	72.17	70.54	1.63
SWMH 3-11	819030.32	407077.24	73.90	71.64	2.26
SWMH 3-12	819052.68	407079.84	75.72	72.83	2.89
SWMH 3-13	819091.25	407084.91	79.51	77.89	1.62
SWMH 3-14	819117.62	407088.62	80.98	78.96	2.02
SWMH 3-15	819141.13	407094.11	81.82	79.67	2.15
SWMH 9-1	819080.33	407186.14	86.01	83.99	2.02
SWMH 9-2	819080.40	407233.48	87.93	86.68	1.25
SWMH 5-1	818999.22	407158.42	76.97	75.17	1.80
SWMH 5-2	818994.60	407220.52	79.30	77.86	1.44
SWMH 5-3	819026.23	407219.42	80.89	79.56	1.33
SWMH 4-1	818916.02	407070.30	65.69	63.95	1.74
SWMH 6-1	819030.12	407162.50	78.42	77.00	1.42
SWMH 10-1	819111.68	407188.92	87.43	85.70	1.73
EX SWMH 11-1	818902.11	407209.34	69.60	67.73	1.87
EX SWMH 11-5	818997.53	407255.77	81.16	79.64	1.52
EX SWMH 2-2	818902.36	407156.54	65.31	63.63	1.68
SUMP 1	819126.80	407193.75	87.39	-	-
SUMP 2	819114.25	407190.57	87.28	-	-
SUMP 3	819139.37	407095.43	81.72	-	-
SUMP 4	819125.82	407096.19	81.80	-	-
SUMP 8	819060.39	407079.70	76.45	-	-
SUMP 9	819045.22	407069.36	74.92	-	-
SUMP 10	819042.54	407090.12	75.08	-	-
SUMP 11	819050.29	407090.18	75.05	-	-
SUMP 12	819040.73	407162.01	78.06	-	-
SUMP 13	819032.94	407163.61	78.17	-	-
SUMP 14	819036.52	407220.47	80.71	-	-
SUMP 15	819028.93	407220.32	80.67	-	-
SUMP 16	818988.11	407078.49	70.51	-	-
SUMP 17	818984.54	407071.69	70.57	-	-
SUMP 19	818954.72	407129.40	68.87	-	-
DBL SUMP 20	818961.96	407132.45	68.87	-	-
SUMP 21	818955.73	407199.32	71.60	-	-

THIS DRAWING AND DESIGN REMAINS THE PROPERTY OF AND MAY NOT BE REPRODUCED OR ALTERED WITHOUT THE WRITTEN PERMISSION OF HARRISON GRIERSON CONSULTANTS LIMITED. NO LIABILITY SHALL BE ACCEPTED FOR UNAUTHORIZED USE OF THIS DRAWING.



NOTE:

- All dimensions are shown in metres unless otherwise stated.
- All valves and hydrants installed by November 2007.
- All pipe diameters are nominal bore.

WARNING: Levels, locations and dimensions of water services shown on these plans may not be accurate due to circumstances not notified to Harrison Grierison Consultants Ltd. A physical check should be made on all levels, locations and dimensions before starting design or works.

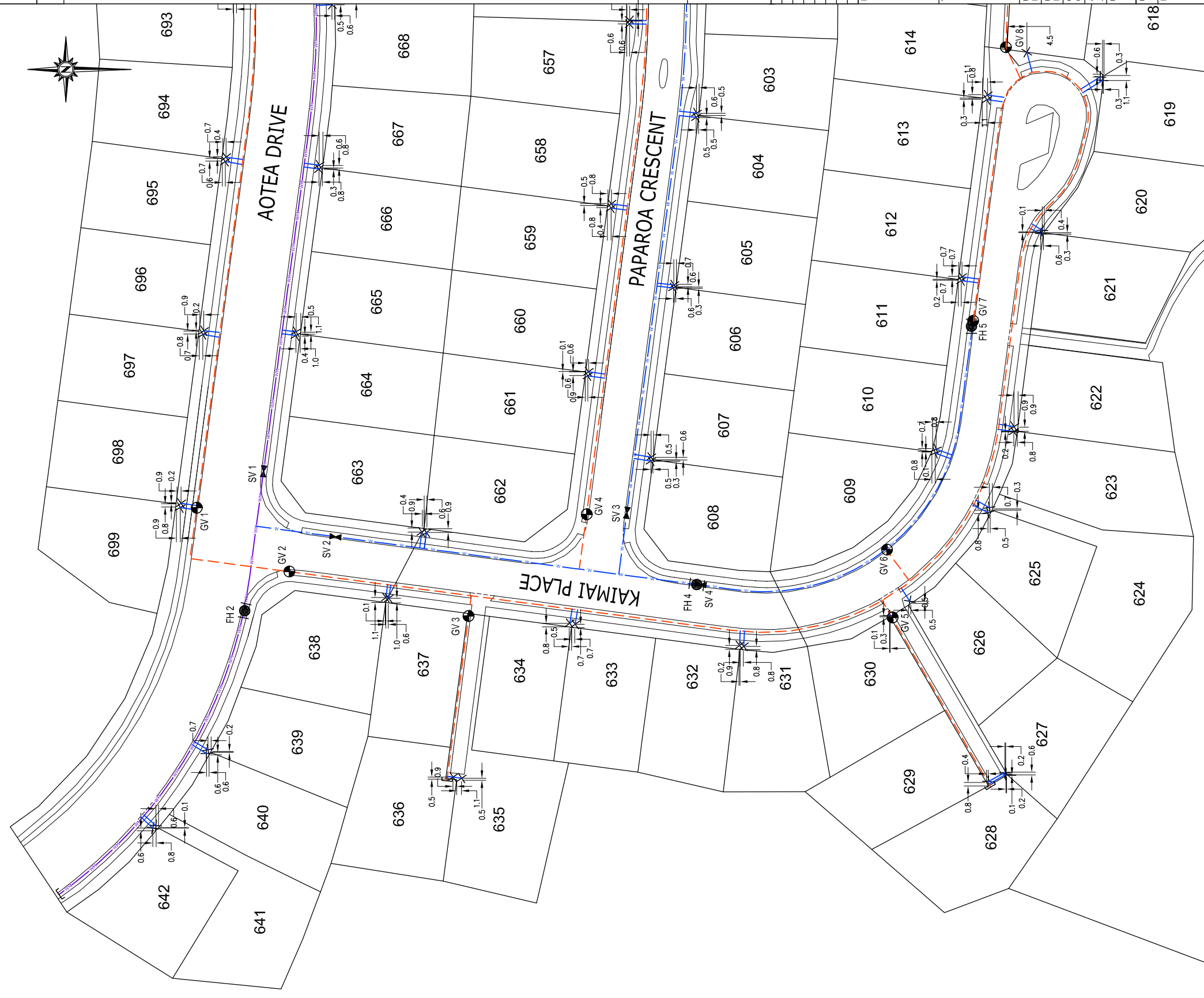


A	INITIAL RELEASE	JMS	27/05/2008
	REF. AMENDMENT		
	PROJECT:		

CARRUS LIMITED
AOTEA BLOCK - PORIRUA
STAGES 7A, 7B & 7C

WATER RETICULATION
AS BUILT PLANS
SHEET 1 OF 2

DESIGNED:	DATE:	SIGNATURE:	DATE:
KDI	05/2007		27/05/2008
DRAWN:	DATE:	SIGNATURE:	DATE:
NDH	05/2008		
CHECKED:	DATE:	SIGNATURE:	DATE:
GAW/JMS	13/05/2008		
APPROVED:	DATE:	SIGNATURE:	DATE:
JMS	27/05/2008		
PROJECT NO:	1850-00633-01		
DRAWING NO:	00633-7-AB500		
AS BUILT	AS BUILT		
SCALE:	1:500 @ A1		
SCALE:	1:1000 @ A3		
REV	A		



	mN	mE
GV 1	819140.33	407092.74
GV 2	819119.08	407078.10
GV 3	819077.96	407067.87
GV 4	819050.84	407091.24
GV 5	818980.64	407067.55
GV 6	818981.94	407083.13
GV 7	818962.17	407135.67
GV 8	818954.66	407198.48
SV 1	819125.00	407101.23
SV 2	819108.51	407086.20
SV 3	819041.64	407091.58
SV 4	819024.69	407075.13
FH 2	819129.30	407069.01
FH 4	819025.63	407075.25
FH 5	818962.67	407134.33

	mN	mE
LOT 603	819025.67	407183.35
LOT 604	819025.75	407182.38
LOT 605	819030.88	407144.13
LOT 606	819030.98	407143.22
LOT 607	819036.07	407104.36
LOT 608	819036.12	407103.47
LOT 609	818970.87	407105.29
LOT 610	818970.66	407106.17
LOT 611	818964.89	407144.90
LOT 612	818964.75	407145.76
LOT 613	818959.02	407186.42
LOT 614	818958.88	407187.49
LOT 618	818933.01	407191.65
LOT 619	818932.52	407190.88
LOT 620	818946.31	407156.41
LOT 621	818946.65	407155.65
LOT 622	818952.80	407111.37
LOT 623	818952.84	407110.23
LOT 624	818958.45	407092.79
LOT 625	818958.78	407091.65
LOT 626	818976.72	407071.24
LOT 627	818954.86	407031.93
LOT 628	818954.65	407031.54
LOT 629	818958.72	407029.87
LOT 630	818981.50	407067.94
LOT 631	819014.82	407060.92
LOT 632	819015.80	407061.13
LOT 633	819053.50	407065.97
LOT 634	819054.75	407066.21
LOT 635	819079.55	407030.64
LOT 636	819081.52	407030.90
LOT 637	819096.28	407071.94
LOT 638	819096.94	407072.12
LOT 639	819137.75	407037.16
LOT 640	819138.10	407036.33
LOT 641	819149.70	407019.76
LOT 642	819150.44	407019.18
LOT 657	819041.04	407203.85
LOT 658	819045.20	407162.50
LOT 659	819045.27	407161.58
LOT 660	819050.45	407123.95
LOT 661	819050.62	407123.03
LOT 662	819087.64	407087.07
LOT 663	819088.69	407087.15
LOT 664	819117.56	407132.30
LOT 665	819117.54	407133.17
LOT 666	819112.29	407170.52
LOT 667	819112.24	407171.41
LOT 668	819109.30	407208.23
LOT 694	819133.61	407173.24
LOT 695	819133.79	407172.23
LOT 696	819138.72	407133.40
LOT 697	819138.93	407132.53
LOT 698	819143.93	407093.75
LOT 699	819144.11	407092.79

THIS DRAWING AND DESIGN REMAINS THE PROPERTY OF AND MAY NOT BE REPRODUCED OR ALTERED WITHOUT THE WRITTEN PERMISSION OF HARRISON GRIERSON CONSULTANTS LIMITED. NO LIABILITY SHALL BE ACCEPTED FOR UNAUTHORIZED USE OF THIS DRAWING.

LEGEND:

	FIRE HYDRANT
	GATE VALVE
	SLUICE VALVE
	WATER TOBY
	END CAP
	150mm Dia uPVC WATERMAIN
	200mm Dia uPVC WATERMAIN
	50mm Dia MDPE WATERMAIN
	EXISTING 150mm WATERMAIN
	EXISTING 200mm WATERMAIN
	EXISTING RIDERMAIN

NOTE:

- All dimensions are shown in metres unless otherwise stated.
- All valves and hydrants installed by November 2007.
- All pipe diameters are nominal bore.

WARNING: Levels, locations and dimensions of water services shown on these plans may not be accurate due to circumstances not notified to Harrison Grierison Consultants Ltd. A physical check should be made on all levels, locations and dimensions before starting design or works.



Level 15 Grand Pinnacle Tower 2-6 Giffner Terrace Wellington Ph: 04 385 0805 Fax: 04 385 0006

A	INITIAL RELEASE	JMS	27/05/2008
	REF. AMENDMENT	BY	DATE

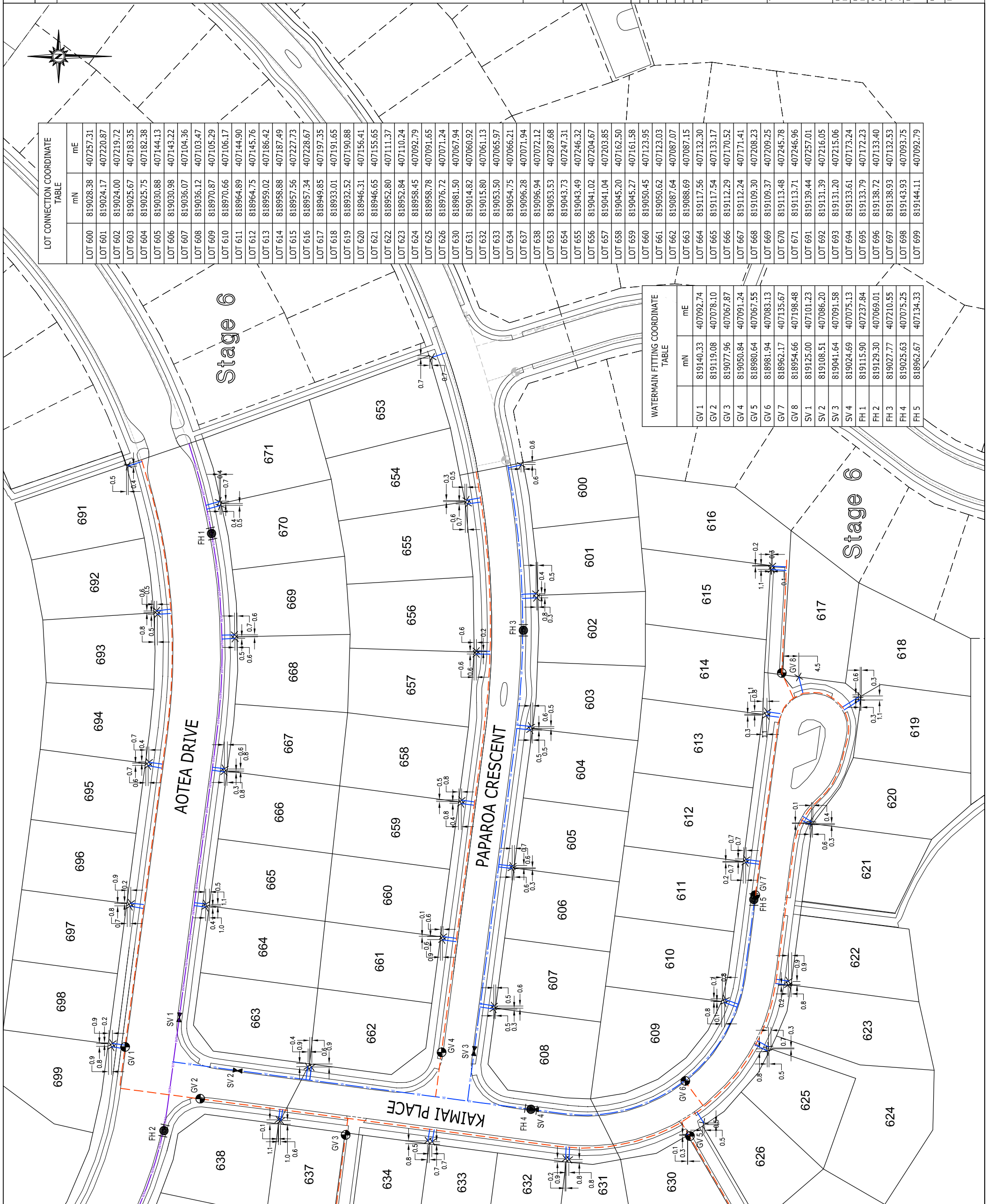
CARRUS LIMITED
AOTEA BLOCK - PORIRUA
STAGES 7 A, 7B & 7C

WATER RETICULATION AS BUILT PLANS
SHEET 2 OF 2

DESIGNED:	DATE:	SIGNATURE:	DATE:
KDL	05/2/2007		27/05/2008
DRAWN:	DATE:	SIGNATURE:	DATE:
NDH	05/2/2008		
CHECKED:	DATE:	SIGNATURE:	DATE:
GAW/JMS	13/05/2008		
APPROVED:	DATE:	SIGNATURE:	DATE:
JMS	27/05/2008		
PLUT STATUS:			

PROJECT No:	1850-00633-01
SCALE:	1:500 @ A1 1:1000 @ A3
AS BUILT	

00633-7-AB501	A
---------------	---



LOT CONNECTION COORDINATE TABLE

LOT	mN	mE
LOT 600	819028.38	407257.31
LOT 601	819024.17	407220.87
LOT 602	819024.00	407219.72
LOT 603	819025.67	407183.35
LOT 604	819025.75	407182.38
LOT 605	819030.88	407144.13
LOT 606	819030.98	407143.22
LOT 607	819036.07	407104.36
LOT 608	819036.12	407103.47
LOT 609	818970.87	407105.29
LOT 610	818970.66	407106.17
LOT 611	818964.89	407144.90
LOT 612	818964.75	407145.76
LOT 613	818959.02	407186.42
LOT 614	818958.88	407187.49
LOT 615	818957.56	407227.73
LOT 616	818957.34	407228.67
LOT 617	818949.85	407197.35
LOT 618	818933.01	407191.65
LOT 619	818932.52	407190.88
LOT 620	818946.31	407156.41
LOT 621	818946.65	407155.65
LOT 622	818952.80	407111.37
LOT 623	818952.84	407110.24
LOT 624	818958.45	407092.79
LOT 625	818958.78	407091.65
LOT 626	818976.72	407071.24
LOT 630	818981.50	407067.94
LOT 631	819014.82	407060.92
LOT 632	819015.80	407061.13
LOT 633	819053.50	407065.97
LOT 634	819054.75	407066.21
LOT 637	819096.28	407071.94
LOT 638	819096.94	407072.12
LOT 653	819053.53	407287.68
LOT 654	819043.73	407247.31
LOT 655	819043.49	407246.32
LOT 656	819041.02	407204.67
LOT 657	819041.04	407203.85
LOT 658	819045.20	407162.50
LOT 659	819045.27	407161.58
LOT 660	819050.45	407123.95
LOT 661	819050.62	407123.03
LOT 662	819087.64	407087.07
LOT 663	819088.69	407087.15
LOT 664	819117.56	407132.30
LOT 665	819117.54	407133.17
LOT 666	819112.29	407170.52
LOT 667	819112.24	407171.41
LOT 668	819109.30	407208.23
LOT 669	819109.37	407209.25
LOT 670	819113.48	407245.78
LOT 671	819113.71	407246.96
LOT 691	819139.44	407257.01
LOT 692	819131.39	407216.05
LOT 693	819131.20	407215.06
LOT 694	819133.61	407173.24
LOT 695	819133.79	407172.23
LOT 696	819138.72	407133.40
LOT 697	819138.93	407132.53
LOT 698	819143.93	407093.75
LOT 699	819144.11	407092.79

WATERMAIN FITTING COORDINATE TABLE

GV	mN	mE
GV 1	819140.33	407092.74
GV 2	819119.08	407078.10
GV 3	819077.96	407067.87
GV 4	819050.84	407091.24
GV 5	818980.64	407067.55
GV 6	818981.94	407083.13
GV 7	818962.17	407135.67
GV 8	818954.66	407198.48
SV 1	819125.00	407101.23
SV 2	819108.51	407086.20
SV 3	819041.64	407091.58
SV 4	819024.69	407075.13
FH 1	819115.90	407237.84
FH 2	819129.30	407069.01
FH 3	819027.77	407210.55
FH 4	819025.63	407075.25
FH 5	818962.67	407134.33