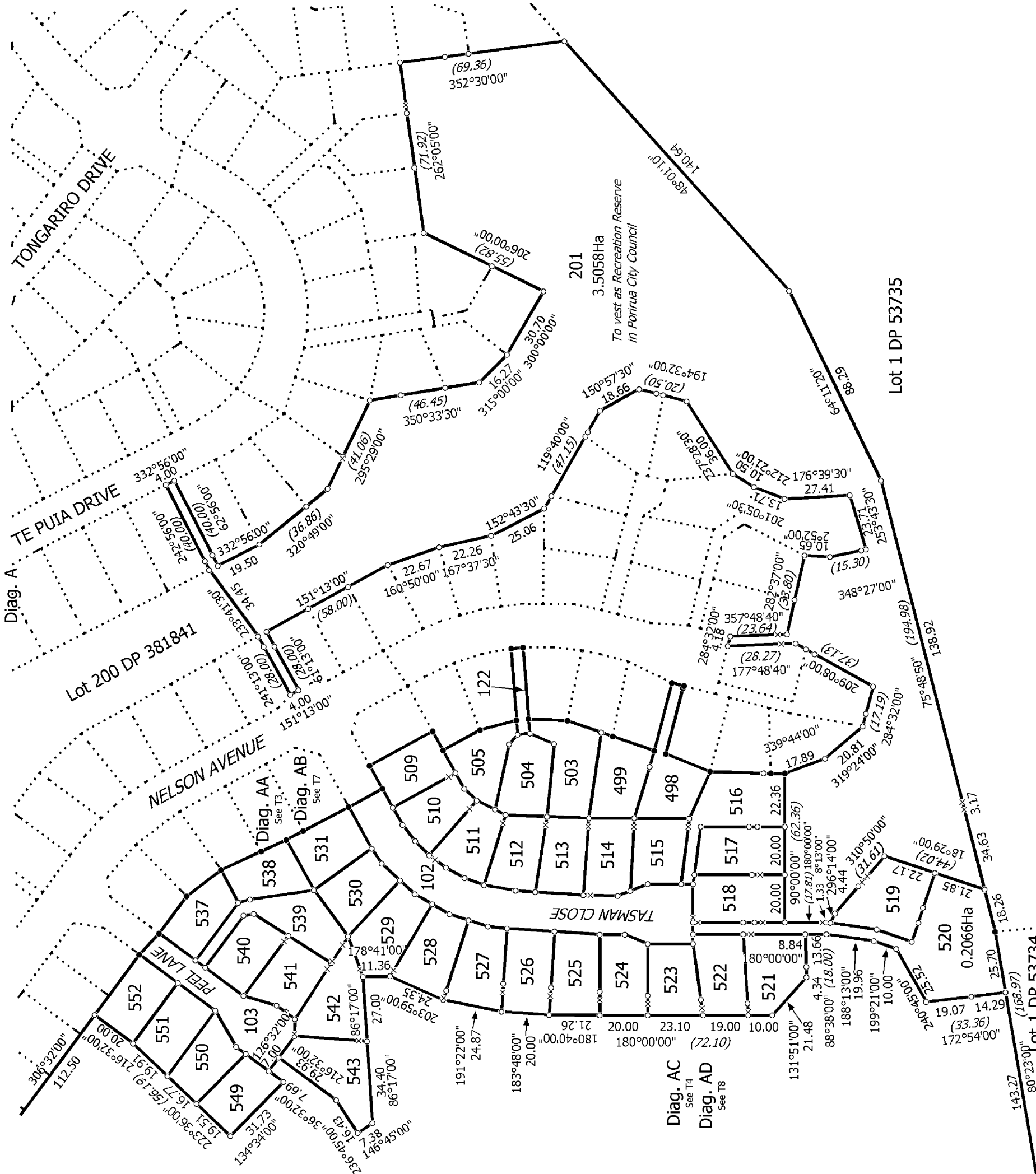
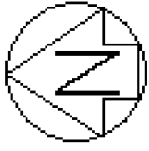


T 1/9

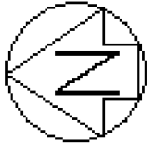
Lots 1, 102, 103, 122, 201, 498, 499, 503, 505, 509, 531, 537, 543, 549, 552 being a
 subdivision of Lot 1 DP 381841

Surveyor: Brett William Horne
 Firm: Harrison Grierson Consultants Limited
 Survey Date: 7/08/2007

Digital Survey Plan
 DP 387624
 Deposited on: 12/11/2007



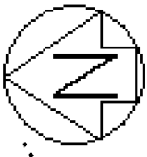
<p>Land District: Wellington</p> <p>Digitally Generated Plan</p> <p>Generated on: 22/11/2007 10:51am Page 39 of 46</p>	<p>Lots 1, 102, 103, 122, 201, 498, 499, 503, 505, 509, 531, 537, 543, 549, 552 being a subdivision of Lot 1 DP 381841</p>	<p>Surveyor: Brett William Horne</p> <p>Firm: Harrison Grierson Consultants Limited</p> <p>Survey Date: 7/08/2007</p>	<p>Digital Survey Plan</p> <p>DP 387624</p> <p>Deposited on: 12/11/2007</p>
--	--	---	---



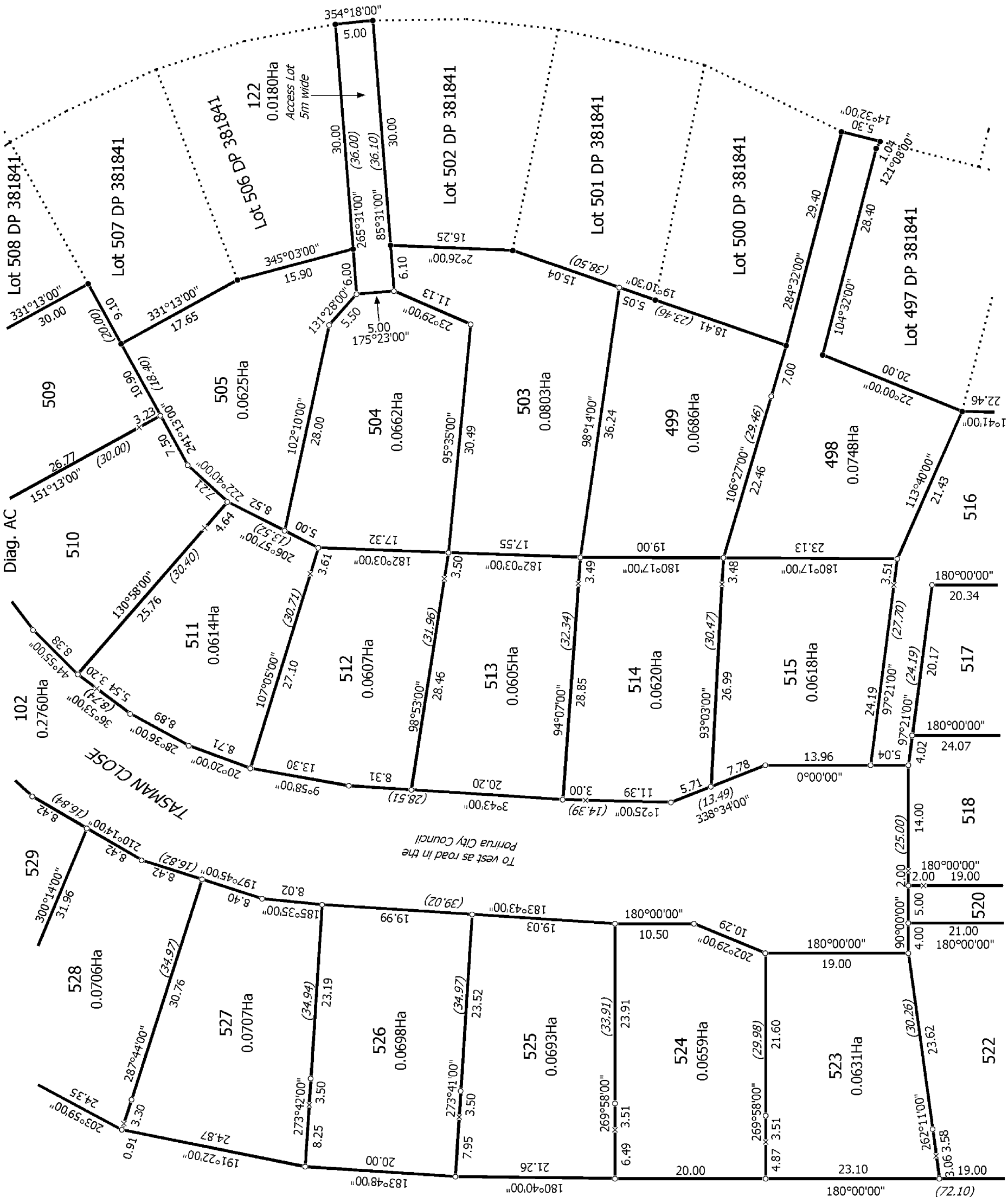
T 3/8

Lots 1, 102, 103, 122, 201, 498, 499, 503, 505, 509, 531, 537, 543, 549, 552 being a subdivision of Lot 1 DP 381841

Surveyor: Brett William Horne
 Firm: Harrison Grierson Consultants Limited
 Survey Date: 7/08/2007



NELSON AVENUE



T 4/9

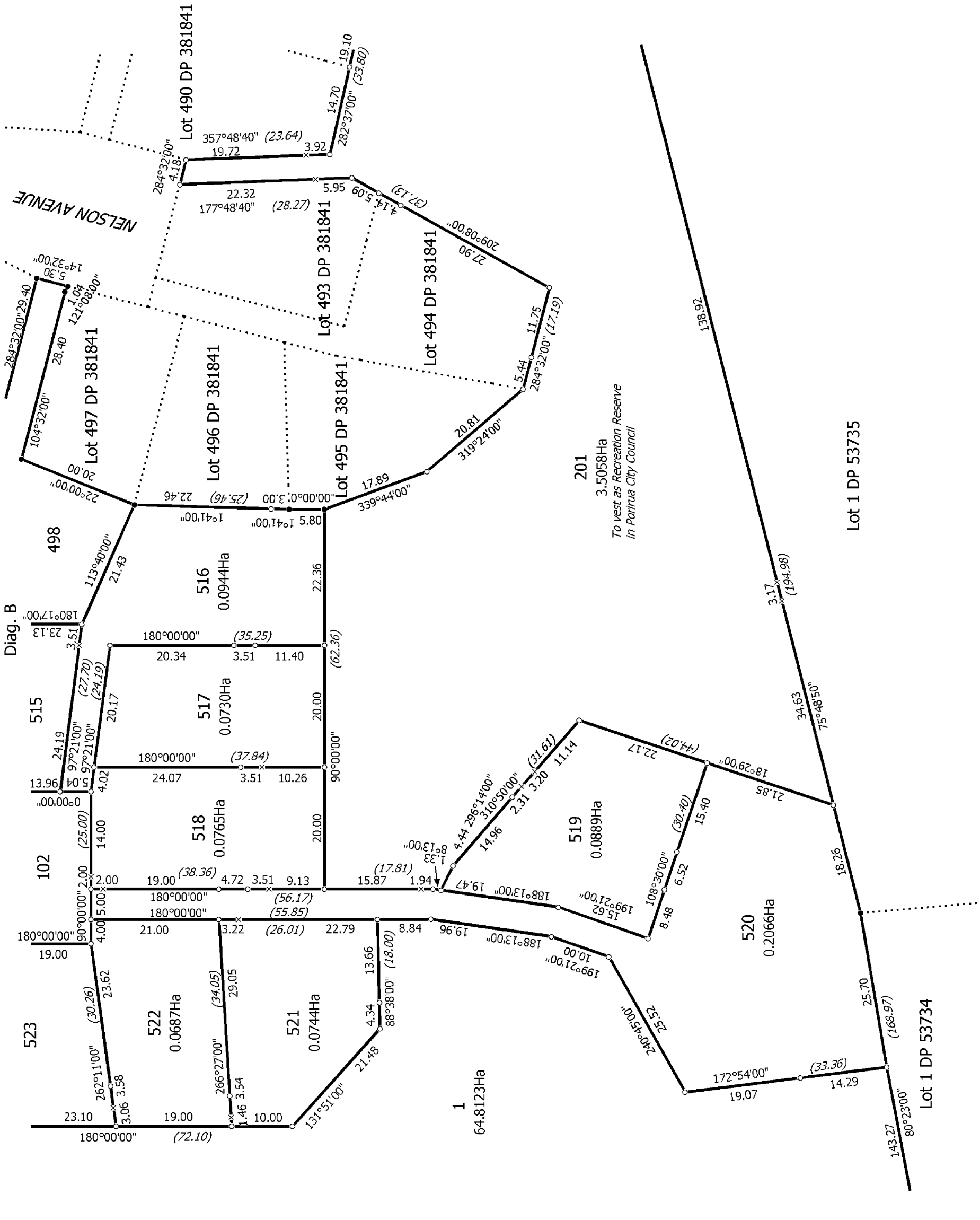
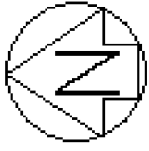
Digital Survey Plan
 DP 387624
 Deposited on: 12/11/2007

Surveyor: Brett William Horne
 Firm: Harrison Grierson Consultants Limited
 Survey Date: 7/08/2007

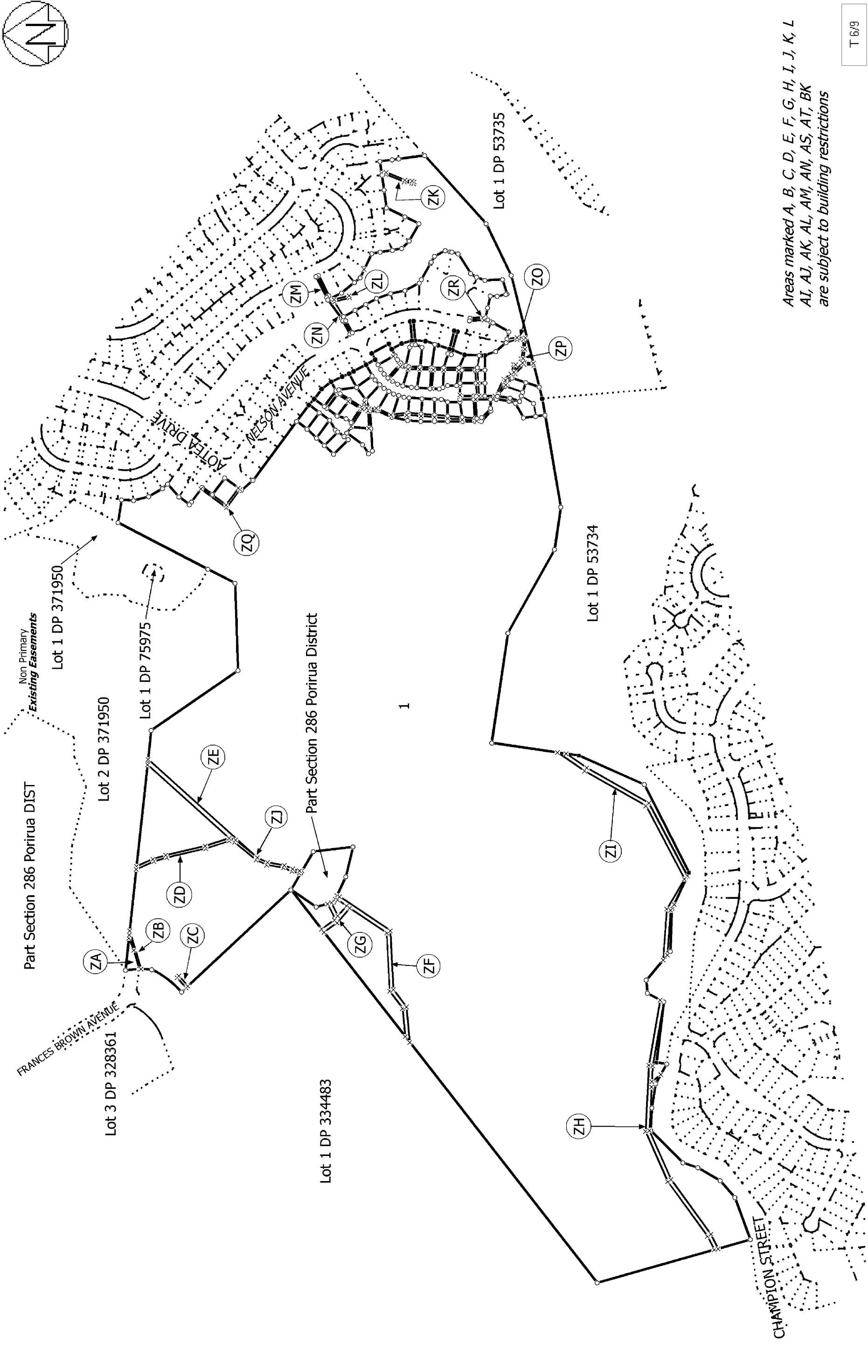
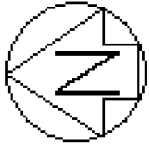
Lots 1, 102, 103, 122, 201, 498, 499, 503, 505, 509, 510, 511, 512, 513, 514, 515, 516, 517, 518, 520, 522, 523, 524, 525, 526, 527, 528, 529 being a
 subdivision of Lot 1 DP 381841

Land District: Wellington
 Digitally Generated Plan
 Generated on: 22/11/2007 10:51am Page 41 of 46

1
 64.8123Ha



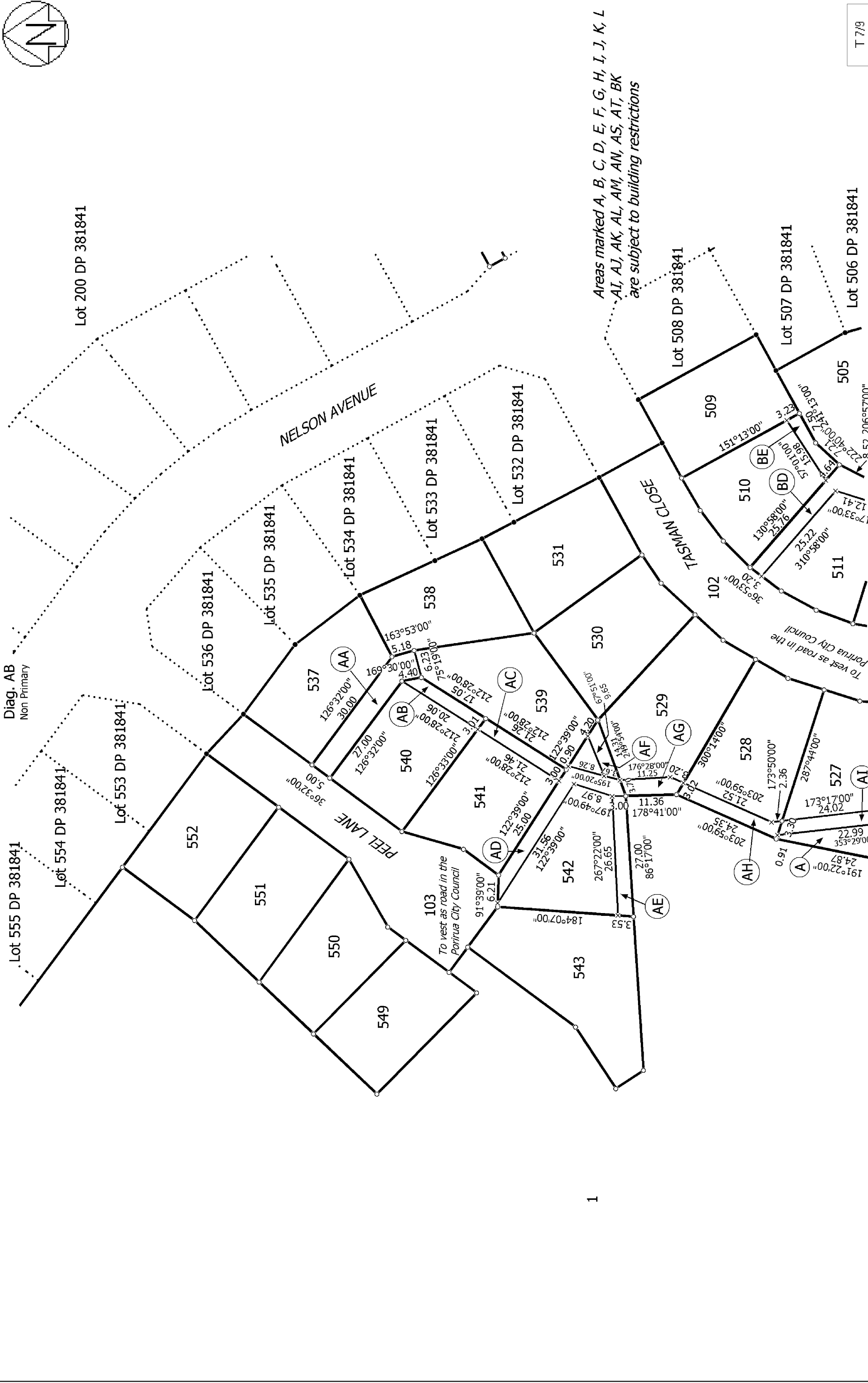
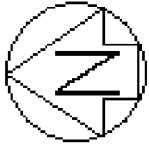
T 5/9



Areas marked A, B, C, D, E, F, G, H, I, J, K, L
 AI, AJ, AK, AL, AM, AN, AS, AT, BK
 are subject to building restrictions

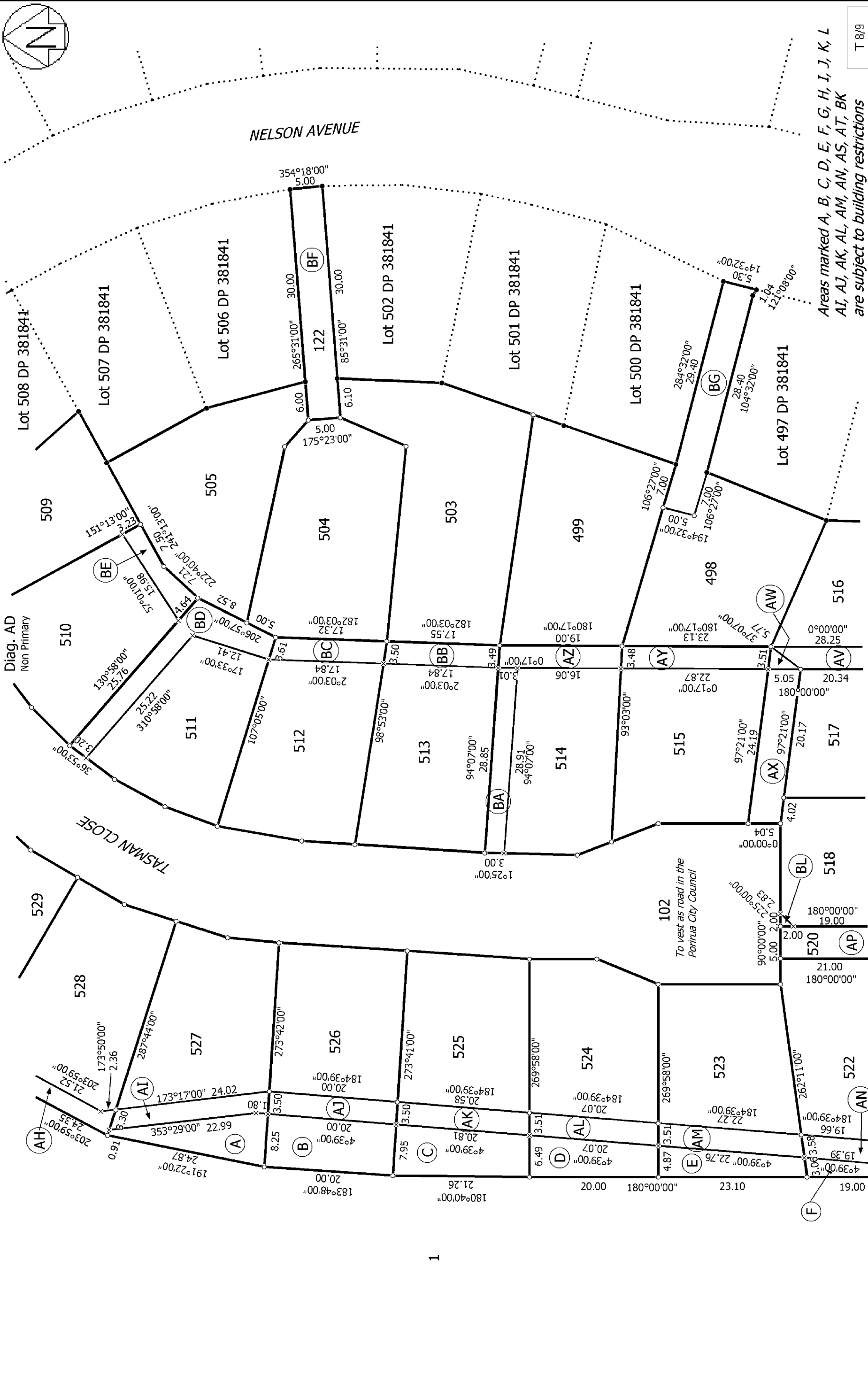
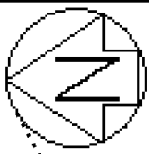
T 6/9

<p>Land District: Wellington Digitally Generated Plan Generated on: 22/11/2007 10:51am Page 43 of 46</p>	<p>Lots 1, 102, 103, 122, 201, 498, 499, 503-505, 509-531, 537-543, 549-552 being a subdivision of Lot 1 DP 381841</p>	<p>Surveyor: Brett William Horne Firm: Harrison Grierson Consultants Limited Survey Date: 7/08/2007</p>	<p>Digital Survey Plan DP 387624 Deposited on: 12/11/2007</p>
--	---	---	---

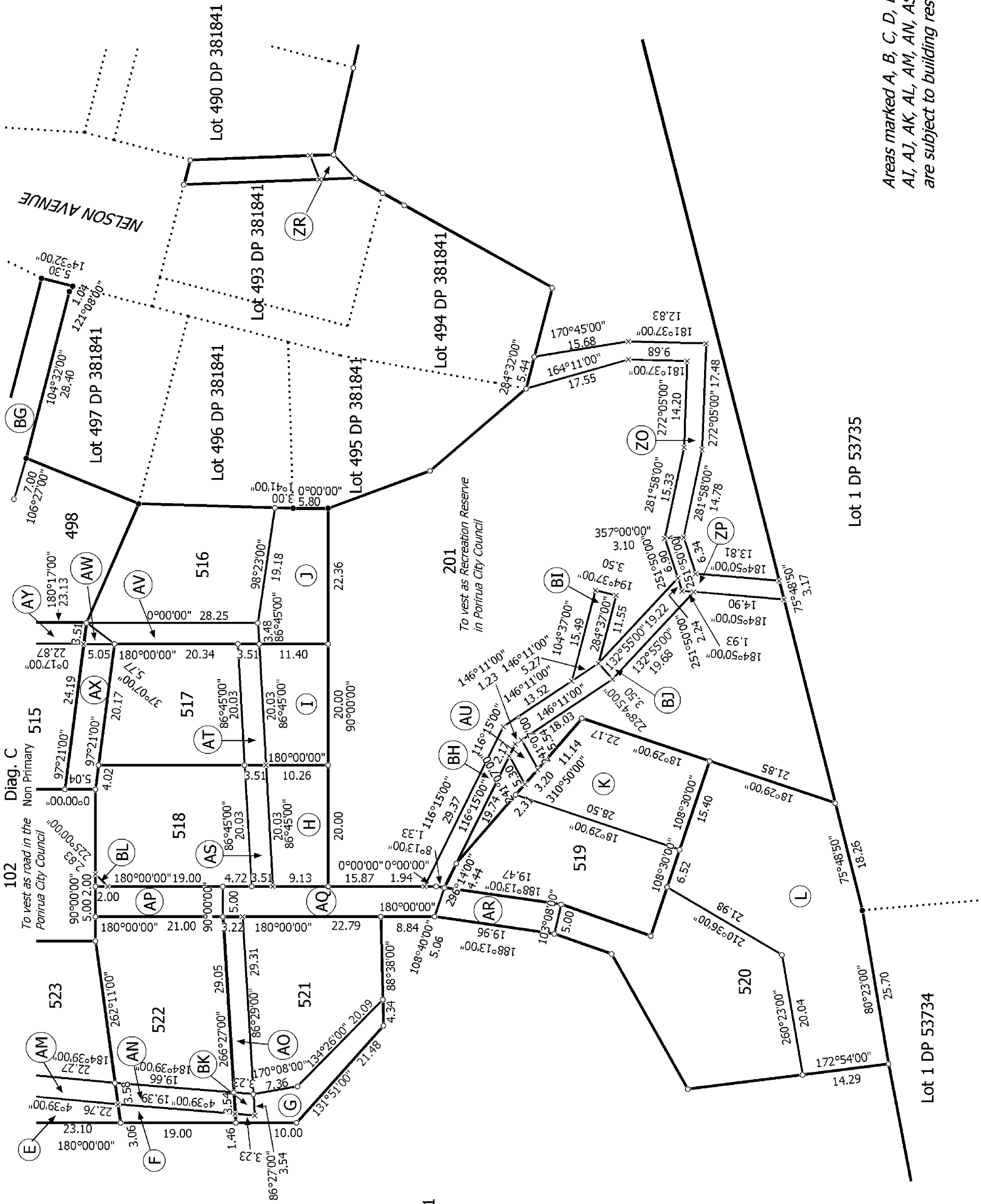


T 7/9

<p>Land District: Wellington</p>	<p>Lots 1, 102, 103, 122, 201, 498, 499, 503-505, 509-531, 537-543, 549-552 being a subdivision of Lot 1 DP 381841</p>	<p>Surveyor: Brett William Horne Firm: Harrison Grierson Consultants Limited Survey Date: 7/08/2007</p>	<p>Digital Survey Plan DP 387624 Deposited on: 12/11/2007</p>
----------------------------------	--	---	---



Land District: Wellington Digitally Generated Plan Generated on: 22/11/2007 10:51am Page 45 of 46	Lots 1, 102, 103, 122, 201, 498, 499, 503, 505, 509, 531, 537, 543, 549, 552 being a subdivision of Lot 1 DP 381841	Surveyor: Brett William Horne Firm: Harrison Grierson Consultants Limited Survey Date: 7/08/2007	Digital Survey Plan DP 387624 Deposited on: 12/11/2007
---	---	--	--



Areas marked A, B, C, D, E, F, G, H, I, J, K, L, AI, AJ, AK, AL, AM, AN, AS, AT, BK are subject to building restrictions

T 9/9

Land District: Wellington Digitally Generated Plan Generated on: 22/11/2007 10:51am Page 46 of 46	Lots 1, 102, 103, 122, 201, 498, 499, 503, 505, 509, 531, 537, 543, 549, 552 being a subdivision of Lot 1 DP 381841	Surveyor: Brett William Horne Firm: Harrison Grierson Consultants Limited Survey Date: 7/08/2007	Digital Survey Plan DP 387624 Deposited on: 12/11/2007
---	---	--	--



Digital Survey Plan - DP 387624

Survey Number	DP 387624		
Surveyor Reference	1850-000633-01		
Surveyor	Brett William Horne		
Survey Firm	Harrison Grierson Consultants Limited (Wellington)		
Surveyor Declaration	I Brett William Horne, being a person entitled to practise as a licensed cadastral surveyor, certify that -		
	(a) The surveys to which this dataset relates are accurate, and were undertaken by me or under my direction in accordance with the Cadastral Survey Act 2002 and the Surveyor-General's Rules for Cadastral Survey 2002/2;		
	(b) This dataset is accurate, and has been created in accordance with that Act and those Rules.		
	Declared on 24/08/2007.		

Survey Details

Dataset Description	Lots 1,102,103,122,201,498,499,503-505,509-531,537-543,549-552 being a subdivision of Lot 1 DP 381841		
Purpose	LT Subdivision		
Status	Deposited	Type	Survey
Land District	Wellington	Survey Class	Class I Cadastral Survey
Coordinate System	Wellington 2000		

Survey Dates

Surveyed Date	07/08/2007	Certified Date	24/08/2007
Submitted Date	24/08/2007 12:46:27	Survey Approval Date	27/08/2007
Deposit Date	12/11/2007		

Referenced Surveys

Survey Number	Land District	Bearing Correction
DP 53734	Wellington	0°00'00"
DP 366936	Wellington	0°00'00"
DP 371891	Wellington	0°00'00"
DP 381841	Wellington	0°00'00"

Territorial Authorities

Porirua City

Comprised In

CT 333999

Created Parcels

Parcels	Parcel Intent	Area	CT Reference
Lot 1 Deposited Plan 387624	Fee Simple Title	64.8123 ha	351704
Lot 102 Deposited Plan 387624	Vesting on Deposit for Road	0.2760 ha	
Lot 103 Deposited Plan 387624	Vesting on Deposit for Road	0.1127 ha	
Lot 122 Deposited Plan 387624	Fee Simple Title	0.0180 ha	Multiple



Digital Survey Plan - DP 387624

Created Parcels

Parcels	Parcel Intent	Area	CT Reference
Lot 201 Deposited Plan 387624	Vesting on Deposit for Recreation Reserve (Territorial Authority)	3.5058 ha	351744
Lot 498 Deposited Plan 387624	Fee Simple Title	0.0748 ha	351705
Lot 499 Deposited Plan 387624	Fee Simple Title	0.0686 ha	351706
Lot 503 Deposited Plan 387624	Fee Simple Title	0.0803 ha	351707
Lot 504 Deposited Plan 387624	Fee Simple Title	0.0662 ha	351708
Lot 505 Deposited Plan 387624	Fee Simple Title	0.0625 ha	351709
Lot 509 Deposited Plan 387624	Fee Simple Title	0.0600 ha	351710
Lot 510 Deposited Plan 387624	Fee Simple Title	0.0599 ha	351711
Lot 511 Deposited Plan 387624	Fee Simple Title	0.0614 ha	351712
Lot 512 Deposited Plan 387624	Fee Simple Title	0.0607 ha	351713
Lot 513 Deposited Plan 387624	Fee Simple Title	0.0605 ha	351714
Lot 514 Deposited Plan 387624	Fee Simple Title	0.0620 ha	351715
Lot 515 Deposited Plan 387624	Fee Simple Title	0.0618 ha	351716
Lot 516 Deposited Plan 387624	Fee Simple Title	0.0944 ha	351717
Lot 517 Deposited Plan 387624	Fee Simple Title	0.0730 ha	351718
Lot 518 Deposited Plan 387624	Fee Simple Title	0.0765 ha	351719
Lot 519 Deposited Plan 387624	Fee Simple Title	0.0889 ha	351720
Lot 520 Deposited Plan 387624	Fee Simple Title	0.2066 ha	351721
Lot 521 Deposited Plan 387624	Fee Simple Title	0.0744 ha	351722
Lot 522 Deposited Plan 387624	Fee Simple Title	0.0687 ha	351723
Lot 523 Deposited Plan 387624	Fee Simple Title	0.0631 ha	351724
Lot 524 Deposited Plan 387624	Fee Simple Title	0.0659 ha	351725
Lot 525 Deposited Plan 387624	Fee Simple Title	0.0693 ha	351726
Lot 526 Deposited Plan 387624	Fee Simple Title	0.0698 ha	351727
Lot 527 Deposited Plan 387624	Fee Simple Title	0.0707 ha	351728
Lot 528 Deposited Plan 387624	Fee Simple Title	0.0706 ha	351729
Lot 529 Deposited Plan 387624	Fee Simple Title	0.0767 ha	351730
Lot 530 Deposited Plan 387624	Fee Simple Title	0.0634 ha	351731
Lot 531 Deposited Plan 387624	Fee Simple Title	0.0645 ha	351732
Lot 537 Deposited Plan 387624	Fee Simple Title	0.0607 ha	351733
Lot 538 Deposited Plan 387624	Fee Simple Title	0.0587 ha	351734
Lot 539 Deposited Plan 387624	Fee Simple Title	0.0821 ha	351735
Lot 540 Deposited Plan 387624	Fee Simple Title	0.0609 ha	351736
Lot 541 Deposited Plan 387624	Fee Simple Title	0.0636 ha	351737
Lot 542 Deposited Plan 387624	Fee Simple Title	0.0799 ha	351738
Lot 543 Deposited Plan 387624	Fee Simple Title	0.0865 ha	351739
Lot 549 Deposited Plan 387624	Fee Simple Title	0.0595 ha	351740
Lot 550 Deposited Plan 387624	Fee Simple Title	0.0583 ha	351741
Lot 551 Deposited Plan 387624	Fee Simple Title	0.0642 ha	351742
Lot 552 Deposited Plan 387624	Fee Simple Title	0.0630 ha	351743
Part Section 286 Porirua District Marked A Deposited Plan 387624	Fee Simple Title Land Covenant	0.5419 ha	



Digital Survey Plan - DP 387624

Created Parcels

Parcels	Parcel Intent	Area	CT Reference
Marked B Deposited Plan 387624	Land Covenant		
Marked C Deposited Plan 387624	Land Covenant		
Marked D Deposited Plan 387624	Land Covenant		
Marked E Deposited Plan 387624	Land Covenant		
Marked F Deposited Plan 387624	Land Covenant		
Marked G Deposited Plan 387624	Land Covenant		
Marked H Deposited Plan 387624	Land Covenant		
Marked I Deposited Plan 387624	Land Covenant		
Marked J Deposited Plan 387624	Land Covenant		
Marked K Deposited Plan 387624	Land Covenant		
Marked L Deposited Plan 387624	Land Covenant		
Marked AA Deposited Plan 387624	Easement		
Marked AB Deposited Plan 387624	Easement		
Marked AC Deposited Plan 387624	Easement		
Marked AD Deposited Plan 387624	Easement		
Marked AE Deposited Plan 387624	Easement		
Marked AF Deposited Plan 387624	Easement		
Marked AG Deposited Plan 387624	Easement		
Marked AH Deposited Plan 387624	Easement		
Marked AI Deposited Plan 387624	Easement		
Marked AJ Deposited Plan 387624	Easement		
Marked AK Deposited Plan 387624	Easement		
Marked AL Deposited Plan 387624	Easement		
Marked AM Deposited Plan 387624	Easement		
Marked AN Deposited Plan 387624	Easement		
Marked AO Deposited Plan 387624	Easement		
Marked AP Deposited Plan 387624	Easement		
Marked AQ Deposited Plan 387624	Easement		
Marked AR Deposited Plan 387624	Easement		
Marked AS Deposited Plan 387624	Easement		
Marked AT Deposited Plan 387624	Easement		
Marked AU Deposited Plan 387624	Easement		
Marked AV Deposited Plan 387624	Easement		
Marked AW Deposited Plan 387624	Easement		
Marked AX Deposited Plan 387624	Easement		
Marked AY Deposited Plan 387624	Easement		
Marked AZ Deposited Plan 387624	Easement		
Marked BA Deposited Plan 387624	Easement		
Marked BB Deposited Plan 387624	Easement		
Marked BC Deposited Plan 387624	Easement		
Marked BD Deposited Plan 387624	Easement		
Marked BE Deposited Plan 387624	Easement		
Marked BF Deposited Plan 387624	Easement		
Marked BG Deposited Plan 387624	Easement		



Digital Survey Plan - DP 387624

Created Parcels

Parcels	Parcel Intent	Area	CT Reference
Marked BH Deposited Plan 387624	Easement		
Marked BI Deposited Plan 387624	Easement		
Marked BJ Deposited Plan 387624	Easement		
Marked BK Deposited Plan 387624	Easement		
Marked BL Deposited Plan 387624	Easement		
Marked ZA Deposited Plan 387624	Easement		
Marked ZB Deposited Plan 387624	Easement		
Marked ZC Deposited Plan 387624	Easement		
Marked ZD Deposited Plan 387624	Easement		
Marked ZE Deposited Plan 387624	Easement		
Marked ZF Deposited Plan 387624	Easement		
Marked ZG Deposited Plan 387624	Easement		
Marked ZH Deposited Plan 387624	Easement		
Marked ZI Deposited Plan 387624	Easement		
Marked ZJ Deposited Plan 387624	Easement		
Marked ZK Deposited Plan 387624	Easement		
Marked ZL Deposited Plan 387624	Easement		
Marked ZM Deposited Plan 387624	Easement		
Marked ZN Deposited Plan 387624	Easement		
Marked ZO Deposited Plan 387624	Easement		
Marked ZP Deposited Plan 387624	Easement		
Marked ZQ Deposited Plan 387624	Easement		
Marked ZR Deposited Plan 387624	Easement		
Total Area		<hr/> 72.0793 ha	

DP 387624

Memorandum of Easements			
<small>(Pursuant to s243 Resource Management Act 1991)</small>			
Purpose	Shown	Servient Tenement	Dominant Tenement
Right to drain sewage and water	AE	Lot 542 hereon	Lot 543 hereon
	AF	Lot 542 hereon	Lot 539 hereon
	AU	Lot 201 hereon	Lot 519 hereon
	BE	Lot 510 hereon	Lot 509 hereon
Right to drain sewage	AC	Lot 541 hereon	Lot 540 hereon
Right of Way	AA	Lot 539 hereon	Lot 538 hereon
	AP	Lot 520 hereon	Lots 519 & 521 hereon
	AQ	Lot 520 hereon	Lots 519 & 521 hereon
	AR	Lot 520 hereon	Lot 519 hereon
	AX	Lot 516 hereon	Lot 517 hereon
	AW	Lot 516 hereon	Lot 517 hereon
	BF	Lot 122 hereon	Lots 503,504 & 505 hereon
	BG	Lot 498 hereon	Lot 499 hereon
Right to convey water, electricity, gas, telecommunications and computer media	AA	Lot 539 hereon	Lot 538 hereon
	AP	Lot 520 hereon	Lots 519 & 521 hereon
	AQ	Lot 520 hereon	Lots 519 & 521 hereon
	AR	Lot 520 hereon	Lot 519 hereon
	AX	Lot 516 hereon	Lot 517 hereon
	AW	Lot 516 hereon	Lot 517 hereon
	BG	Lot 498 hereon	Lot 499 hereon

DP 387624

Memorandum of Easements in Gross			
<small>(Pursuant to s243 Resource Management Act 1991)</small>			
Purpose	Shown	Servient Tenement	Grantee
Right to drain sewage and water	AD	Lot 542 hereon	Porirua City Council
	AG	Lot 529 hereon	
	AH	Lot 528 hereon	
	AI	Lot 527 hereon	
	AJ	Lot 526 hereon	
	AK	Lot 525 hereon	
	AL	Lot 524 hereon	
	AM	Lot 523 hereon	
	AN	Lot 522 hereon	
	AO	Lot 521 hereon	
	AQ	Lot 520 hereon	
	AS	Lot 518 hereon	
	AT	Lot 517 hereon	
	AV	Lot 516 hereon	
	AW	Lot 516 hereon	
	AY	Lot 515 hereon	
	AZ	Lot 514 hereon	
	BB	Lot 513 hereon	
	BC	Lot 512 hereon	
BD	Lot 511 hereon		
BH	Lot 201 hereon		
BK	Lot 521 hereon		
Right to drain water	AA	Lot 539 hereon	Porirua City Council
	AB	Lot 540 hereon	
	AC	Lot 541 hereon	
	AP	Lot 520 hereon	
	BA	Lot 514 hereon	
	BI	Lot 201 hereon	
Right to drain sewage	BL	Lot 518 hereon	Porirua City Council
	BJ	Lot 201 hereon	

DP 387624

Schedule of Existing Easements in Gross				
Purpose/Interest	Servient Tenement	Shown	Created By	Grantee
Right to convey water	Lot 1 hereon	ZF, ZG	B.686066.3	Porirua City Council
	Lot 1 hereon	ZE	B.557646.1	Wellington Regional Council
		ZJ	T.861524.2	
	Lot 201 hereon	ZO	EI 7450962.9	Porirua City Council
	ZP	EI 7450962.9		
Right to drain sewage	Lot 1 hereon	ZH, ZI	B.686066.3	Porirua City Council
	Lot 201 hereon	ZP	EI 7450962.9	
Right of Way	Lot 1 hereon	ZA, ZD, ZJ	T.861524.1	Porirua City Council
Right to drain water	Lot 1 hereon	ZC	B.686066.3	Porirua City Council
	Lot 201 hereon	ZK, ZM	EI 7114612.13	
	Lot 201 hereon	ZN	EI 7450962.9	
Right to drain sewage and water	Lot 201 hereon	ZL	EI 7114612.13	Porirua City Council
	Lot 201 hereon	ZO	EI 7450962.9	
	Lot 201 hereon	ZR	EI 7450962.9	
	Lot 1 hereon	ZQ	EI 7450962.9	
Schedule of Existing Easements				
Purpose/Interest	Servient Tenement	Shown	Created By	
Right to convey electricity	Lot 1 hereon	ZB	B.604095.2	