

Digital Survey Plan - DP 381841

Survey Number DP 381841
Surveyor Reference 1850-000633-01
Surveyor Brett William Horne
Survey Firm Harrison Grierson Consultants Limited (Wellington)
Surveyor Declaration I Brett William Horne, being a person entitled to practise as a licensed cadastral surveyor, certify that -
 (a) The surveys to which this dataset relates are accurate, and were undertaken by me or under my direction in accordance with the Cadastral Survey Act 2002 and the Surveyor-General's Rules for Cadastral Survey 2002/2;
 (b) This dataset is accurate, and has been created in accordance with that Act and those Rules.
 Declared on 22/06/2007.

Survey Details

Dataset Description Lots 1,100,101,104,120,121,190,200,458-497,500-502,506-508,532-536,553- 555, 643-645 and 678-682 being a subdivision of Lot 3 DP 371891
Purpose LT Subdivision
Status Deposited **Type** Survey
Land District Wellington **Survey Class** Class I Cadastral Survey
Coordinate System Wellington 2000

Survey Dates

Surveyed Date 08/05/2007 **Certified Date** 22/06/2007
Submitted Date 22/06/2007 16:15:21 **Survey Approval Date** 25/06/2007
Deposit Date 06/07/2007

Referenced Surveys

Survey Number	Land District	Bearing Correction
DP 354489	Wellington	0°00'00"
DP 361171	Wellington	0°00'00"
DP 366936	Wellington	0°00'00"
DP 371891	Wellington	0°00'00"
DP 352503	Wellington	0°00'00"

Territorial Authorities

Porirua City

Comprised In

CT 294169

Created Parcels

Parcels	Parcel Intent	Area	CT Reference
Marked AX Deposited Plan 381841	Easement		
Marked BF Deposited Plan 381841	Easement		
Lot 1 Deposited Plan 381841	Fee Simple Title	71.5452 ha	333999
Lot 100 Deposited Plan 381841	Vesting on Deposit for Road	0.9632 ha	

Digital Survey Plan - DP 381841

Created Parcels

Parcels	Parcel Intent	Area	CT Reference
Lot 101 Deposited Plan 381841	Vesting on Deposit for Road	0.2779 ha	
Lot 120 Deposited Plan 381841	Fee Simple Title	0.0250 ha	Multiple
Lot 121 Deposited Plan 381841	Fee Simple Title	0.0495 ha	Multiple
Lot 190 Deposited Plan 381841	Fee Simple Title	0.0623 ha	333931
Lot 200 Deposited Plan 381841	Vesting on Deposit for Local Purpose Reserve	1.2638 ha	334000
Lot 458 Deposited Plan 381841	Fee Simple Title	0.0600 ha	333932
Lot 459 Deposited Plan 381841	Fee Simple Title	0.0600 ha	333933
Lot 460 Deposited Plan 381841	Fee Simple Title	0.0653 ha	333934
Lot 461 Deposited Plan 381841	Fee Simple Title	0.0600 ha	333935
Lot 462 Deposited Plan 381841	Fee Simple Title	0.0617 ha	333936
Lot 463 Deposited Plan 381841	Fee Simple Title	0.0839 ha	333937
Lot 464 Deposited Plan 381841	Fee Simple Title	0.0658 ha	333938
Lot 465 Deposited Plan 381841	Fee Simple Title	0.0739 ha	333939
Lot 466 Deposited Plan 381841	Fee Simple Title	0.0617 ha	333940
Lot 467 Deposited Plan 381841	Fee Simple Title	0.0608 ha	333941
Lot 468 Deposited Plan 381841	Fee Simple Title	0.0610 ha	333942
Lot 469 Deposited Plan 381841	Fee Simple Title	0.0601 ha	333943
Lot 470 Deposited Plan 381841	Fee Simple Title	0.0625 ha	333944
Lot 471 Deposited Plan 381841	Fee Simple Title	0.0632 ha	333945
Lot 472 Deposited Plan 381841	Fee Simple Title	0.0611 ha	333946
Lot 473 Deposited Plan 381841	Fee Simple Title	0.0625 ha	333947
Lot 474 Deposited Plan 381841	Fee Simple Title	0.0625 ha	333948
Lot 475 Deposited Plan 381841	Fee Simple Title	0.0631 ha	333949
Lot 476 Deposited Plan 381841	Fee Simple Title	0.0586 ha	333950
Lot 477 Deposited Plan 381841	Fee Simple Title	0.0579 ha	333951
Lot 478 Deposited Plan 381841	Fee Simple Title	0.0579 ha	333952
Lot 479 Deposited Plan 381841	Fee Simple Title	0.0582 ha	333953
Lot 480 Deposited Plan 381841	Fee Simple Title	0.0591 ha	333954
Lot 481 Deposited Plan 381841	Fee Simple Title	0.0702 ha	333955
Lot 482 Deposited Plan 381841	Fee Simple Title	0.0602 ha	333956
Lot 483 Deposited Plan 381841	Fee Simple Title	0.0660 ha	333957
Lot 484 Deposited Plan 381841	Fee Simple Title	0.0667 ha	333963
Lot 485 Deposited Plan 381841	Fee Simple Title	0.0712 ha	333964
Lot 486 Deposited Plan 381841	Fee Simple Title	0.0759 ha	333965
Lot 487 Deposited Plan 381841	Fee Simple Title	0.0704 ha	333966
Lot 488 Deposited Plan 381841	Fee Simple Title	0.0627 ha	333967
Lot 489 Deposited Plan 381841	Fee Simple Title	0.0654 ha	333968
Lot 490 Deposited Plan 381841	Fee Simple Title	0.0685 ha	333969
Lot 491 Deposited Plan 381841	Fee Simple Title	0.0770 ha	333970
Lot 492 Deposited Plan 381841	Fee Simple Title	0.1276 ha	333971
Lot 493 Deposited Plan 381841	Fee Simple Title	0.0653 ha	333972
Lot 494 Deposited Plan 381841	Fee Simple Title	0.0855 ha	333973

Digital Survey Plan - DP 381841

Created Parcels

Parcels	Parcel Intent	Area	CT Reference
Lot 495 Deposited Plan 381841	Fee Simple Title	0.0645 ha	333974
Lot 496 Deposited Plan 381841	Fee Simple Title	0.0620 ha	333975
Lot 497 Deposited Plan 381841	Fee Simple Title	0.0611 ha	333976
Lot 500 Deposited Plan 381841	Fee Simple Title	0.0583 ha	333977
Lot 501 Deposited Plan 381841	Fee Simple Title	0.0620 ha	333978
Lot 502 Deposited Plan 381841	Fee Simple Title	0.0617 ha	333979
Lot 506 Deposited Plan 381841	Fee Simple Title	0.0609 ha	333980
Lot 507 Deposited Plan 381841	Fee Simple Title	0.0597 ha	333981
Lot 508 Deposited Plan 381841	Fee Simple Title	0.0627 ha	333982
Lot 532 Deposited Plan 381841	Fee Simple Title	0.0666 ha	333983
Lot 533 Deposited Plan 381841	Fee Simple Title	0.0621 ha	333984
Lot 534 Deposited Plan 381841	Fee Simple Title	0.0613 ha	333985
Lot 535 Deposited Plan 381841	Fee Simple Title	0.0615 ha	333986
Lot 536 Deposited Plan 381841	Fee Simple Title	0.0655 ha	333987
Lot 553 Deposited Plan 381841	Fee Simple Title	0.0610 ha	333988
Lot 554 Deposited Plan 381841	Fee Simple Title	0.0600 ha	333989
Lot 555 Deposited Plan 381841	Fee Simple Title	0.0623 ha	333990
Lot 645 Deposited Plan 381841	Fee Simple Title	0.0612 ha	333991
Lot 644 Deposited Plan 381841	Fee Simple Title	0.0600 ha	333992
Lot 643 Deposited Plan 381841	Fee Simple Title	0.0623 ha	333993
Lot 678 Deposited Plan 381841	Fee Simple Title	0.0695 ha	333994
Lot 679 Deposited Plan 381841	Fee Simple Title	0.0740 ha	333995
Lot 680 Deposited Plan 381841	Fee Simple Title	0.0864 ha	333996
Lot 681 Deposited Plan 381841	Fee Simple Title	0.0608 ha	333997
Lot 682 Deposited Plan 381841	Fee Simple Title	0.0608 ha	333998
Marked A Deposited Plan 381841	Land Covenant		
Marked B Deposited Plan 381841	Land Covenant		
Marked C Deposited Plan 381841	Land Covenant		
Marked D Deposited Plan 381841	Land Covenant		
Marked E Deposited Plan 381841	Land Covenant		
Marked F Deposited Plan 381841	Land Covenant		
Marked G Deposited Plan 381841	Land Covenant		
Marked H Deposited Plan 381841	Land Covenant		
Marked I Deposited Plan 381841	Land Covenant		
Marked J Deposited Plan 381841	Land Covenant		
Marked K Deposited Plan 381841	Land Covenant		
Marked L Deposited Plan 381841	Land Covenant		
Marked M Deposited Plan 381841	Land Covenant		
Marked N Deposited Plan 381841	Land Covenant		
Marked O Deposited Plan 381841	Land Covenant		
Marked P Deposited Plan 381841	Land Covenant		
Marked Q Deposited Plan 381841	Land Covenant		
Marked R Deposited Plan 381841	Land Covenant		
Marked S Deposited Plan 381841	Land Covenant		

Digital Survey Plan - DP 381841

Created Parcels

Parcels	Parcel Intent	Area	CT Reference
Marked T Deposited Plan 381841	Land Covenant		
Marked U Deposited Plan 381841	Land Covenant		
Marked AA Deposited Plan 381841	Easement		
Marked AB Deposited Plan 381841	Easement		
Marked AC Deposited Plan 381841	Easement		
Marked AD Deposited Plan 381841	Easement		
Marked AE Deposited Plan 381841	Easement		
Marked AF Deposited Plan 381841	Easement		
Marked AG Deposited Plan 381841	Easement		
Marked AH Deposited Plan 381841	Easement		
Marked AI Deposited Plan 381841	Easement		
Marked AJ Deposited Plan 381841	Easement		
Marked AK Deposited Plan 381841	Easement		
Marked AL Deposited Plan 381841	Easement		
Marked AM Deposited Plan 381841	Easement		
Marked AN Deposited Plan 381841	Easement		
Marked AO Deposited Plan 381841	Easement		
Marked AP Deposited Plan 381841	Easement		
Marked AQ Deposited Plan 381841	Easement		
Marked AR Deposited Plan 381841	Easement		
Marked AS Deposited Plan 381841	Easement		
Marked AT Deposited Plan 381841	Easement		
Marked AU Deposited Plan 381841	Easement		
Marked AV Deposited Plan 381841	Easement		
Marked AW Deposited Plan 381841	Easement		
Marked AY Deposited Plan 381841	Easement		
Marked AZ Deposited Plan 381841	Easement		
Marked BA Deposited Plan 381841	Easement		
Marked BB Deposited Plan 381841	Easement		
Marked BC Deposited Plan 381841	Easement		
Marked BD Deposited Plan 381841	Easement		
Marked BE Deposited Plan 381841	Easement		
Marked BM Deposited Plan 381841	Easement		
Marked CA Deposited Plan 381841	Easement		
Marked CB Deposited Plan 381841	Easement		
Marked CC Deposited Plan 381841	Easement		
Marked CD Deposited Plan 381841	Easement		
Marked CE Deposited Plan 381841	Easement		
Marked CF Deposited Plan 381841	Easement		
Marked CG Deposited Plan 381841	Easement		
Marked CH Deposited Plan 381841	Easement		
Marked CI Deposited Plan 381841	Easement		
Marked BH Deposited Plan 381841	Easement		
Marked BI Deposited Plan 381841	Easement		

Digital Survey Plan - DP 381841

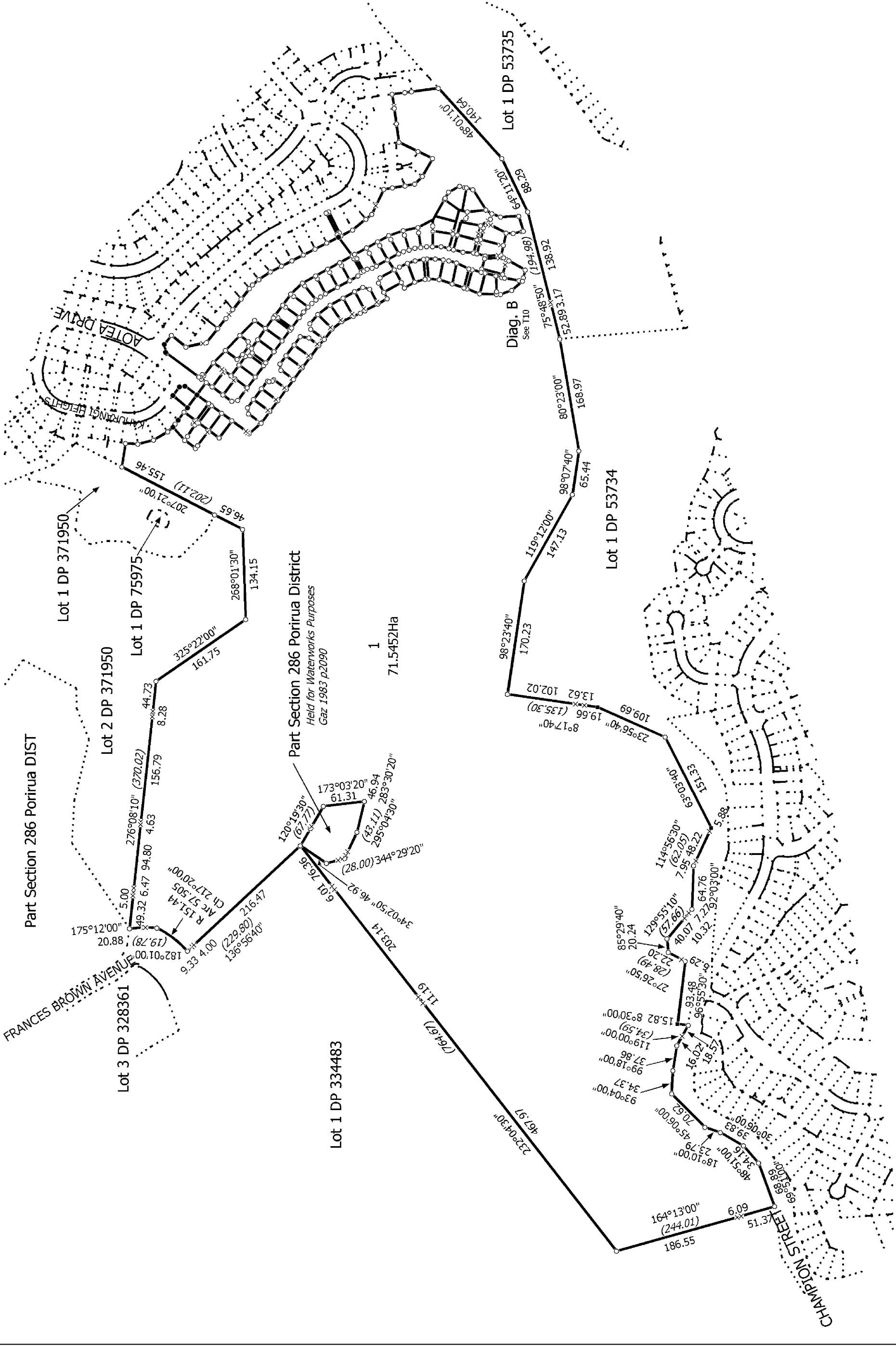
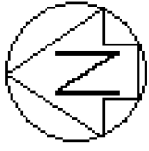
Created Parcels

Parcels	Parcel Intent	Area	CT Reference
Marked BJ Deposited Plan 381841	Easement		
Marked BK Deposited Plan 381841	Easement		
Marked BL Deposited Plan 381841	Easement		
Marked CJ Deposited Plan 381841	Easement		
Marked CK Deposited Plan 381841	Easement		
Marked CL Deposited Plan 381841	Easement		
Marked CM Deposited Plan 381841	Easement		
Lot 104 Deposited Plan 381841	Vesting on Deposit for Road	0.0019 ha	
Part Section 286 Porirua District	Fee Simple Title	0.5419 ha	
Total Area		<u>78.7923 ha</u>	

Memorandum of Easements			
(Pursuant to s243 Resource Management Act 1991)			
Purpose	Shown	Servient Tenement	Dominant Tenement
Right to drain sewage and water	AZ	Lot 483 hereon	Lot 481 hereon
	BD	Lot 121 hereon	Lot 482 hereon
	BH	Lot 492 hereon	Lot 489 hereon
Right of Way	AU	Lot 494 hereon	Lot 495,496 hereon
	AV	Lot 492 hereon	Lot 491 hereon
	AW	Lot 121 hereon	Lots 483,484,485,486,487,488 hereon
	AY	Lot 680 hereon	Lot 679 hereon
	BA	Lot 680 hereon	Lot 679 hereon
	BB	Lot 680 hereon	Lot 679 hereon
	BC	Lot 120 hereon	Lots 463,464,465 hereon
	BD	Lot 121 hereon	Lots 483,484,485,486,487,488 hereon
	BE	Lot 492 hereon	Lot 491 hereon
	BH	Lot 492 hereon	Lot 491 hereon
	Right to convey water, electricity, gas, telecommunications and computer media	AU	Lot 494 hereon
AV		Lot 492 hereon	Lot 491 hereon
AW		Lot 121 hereon	Lots 483,484,485,486,487,488 hereon
AY		Lot 680 hereon	Lot 679 hereon
BA		Lot 680 hereon	Lot 679 hereon
BB		Lot 680 hereon	Lot 679 hereon
BC		Lot 120 hereon	Lots 463,464,465 hereon
BD		Lot 121 hereon	Lots 483,484,485,486,487,488 hereon
BE	Lot 492 hereon	Lot 491 hereon	
BH	Lot 492 hereon	Lot 491 hereon	

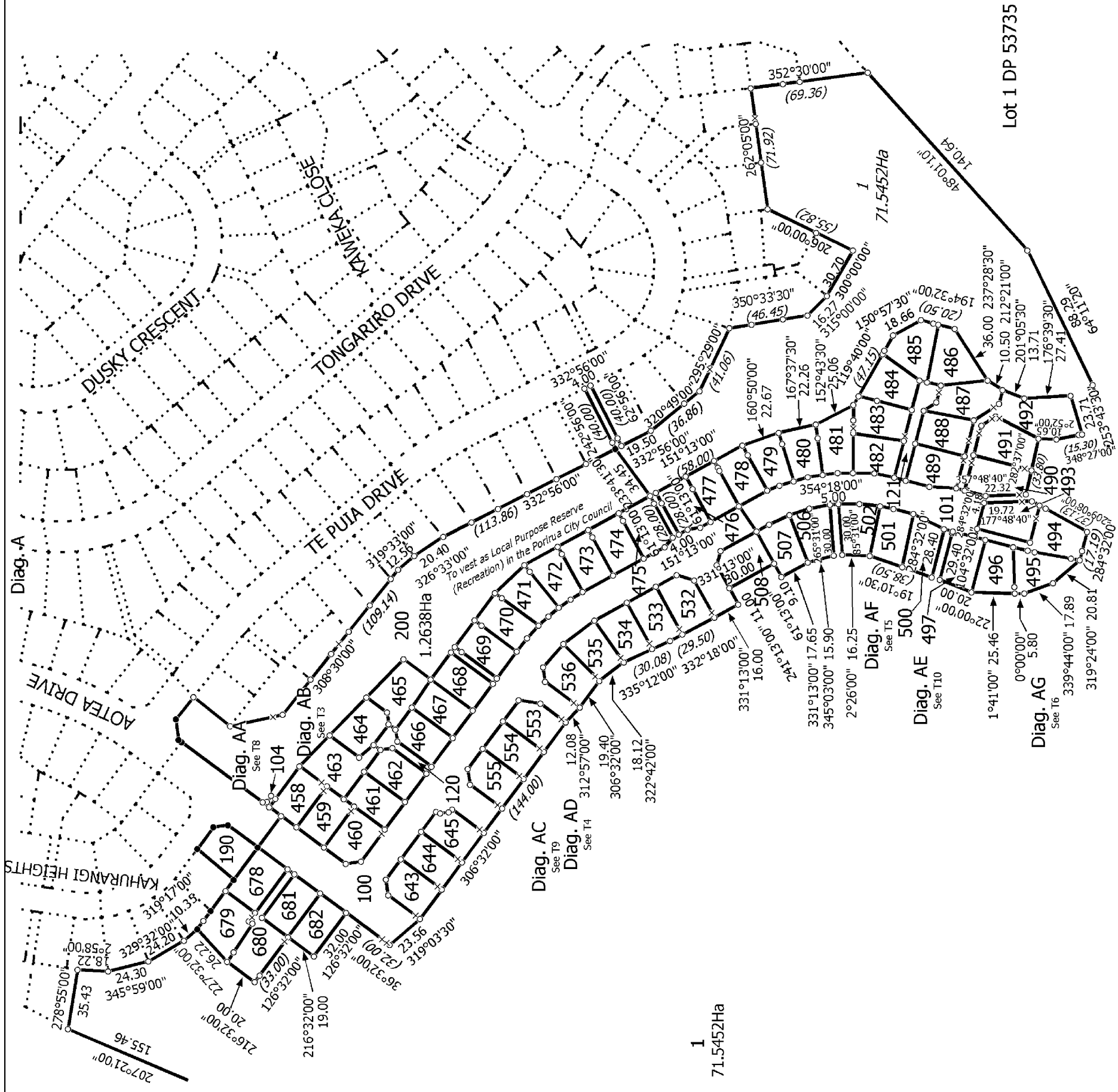
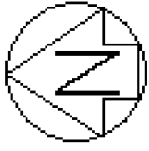
Memorandum of Easements in Gross (Pursuant to s243 Resource Management Act 1991)			
Purpose	Shown	Servient Tenement	Grantee
Right to drain sewage and water	AA	Lot 680 hereon	Porirua City Council
	AB	Lot 459 hereon	
	AC	Lot 460 hereon	
	AD	Lot 643 hereon	
	AE	Lot 644 hereon	
	AF	Lot 645 hereon	
	AG	Lot 555 hereon	
	AH	Lot 554 hereon	
	AI	Lot 553 hereon	
	AJ	Lot 536 hereon	
	AK	Lot 535 hereon	
	AL	Lot 534 hereon	
	AM	Lot 533 hereon	
	AN	Lot 532 hereon	
	AO	Lot 487 hereon	
	AP	Lot 492 hereon	
	AQ	Lot 491 hereon	
	AR	Lot 490 hereon	
	AS	Lot 493 hereon	
	AT	Lot 494 hereon	
AU	Lot 494 hereon		
AV	Lot 492 hereon		
AW	Lot 121 hereon		
AX	Lot 494 hereon		
AY	Lot 680 hereon		
BC	Lot 120 hereon		
BF	Lot 458 hereon		
BJ	Lot 1 hereon		
BM	Lot 1 hereon		
BK	Lot 1 hereon		
Right to drain sewage	BL	Lot 1 hereon	Porirua City Council
Right to drain water	BI	Lot 1 hereon	Porirua City Council
Right to convey water	AT	Lot 494 hereon	Porirua City Council
	AU	Lot 494 hereon	
	BK	Lot 1 hereon	
	BL	Lot 1 hereon	

Schedule of Existing Easements in Gross				
Purpose/Interest	Servient Tenement	Shown	Created By	Grantee
Right to convey water	Lot 1 hereon	CF, CG	B.686066.3	Porirua City Council
	Lot 1 hereon	CE	B.557646.1	Wellington Regional Council
		CJ	T.861524.2	
Right to drain sewage	Lot 1 hereon	CH, CI	B.686066.3	Porirua City Council
Right of Way	Lot 1 hereon	CA, CD, CJ	T.861524.1	Porirua City Council
Right to drain water	Lot 1 hereon	CC	B.686066.3	Porirua City Council
	Lot 1 hereon	CK, CM	EI 7114612.13	
Right to drain sewage and water	Lot 1 hereon	CL	EI 7114612.13	Porirua City Council
Schedule of Existing Easements				
Purpose/Interest	Servient Tenement	Shown	Created By	
Right to convey electricity	Lot 1 hereon	CB	B.604095.2	



T 1/10

<p>Land District: Wellington</p> <p>Digitally Generated Plan</p> <p>Generated on: 07/08/2007 12:56am Page 45 of 54</p>	<p>Lots 1, 100, 101, 104, 120, 121, 190, 200, 458-497, 500-502, 506-508, 532-536, 553- 555, 643-645 and 678-682 being a subdivision of Lot 3 DP 371891</p>	<p>Surveyor: Brett William Horne</p> <p>Firm: Harrison Grierson Consultants Limited</p> <p>Survey Date: 08/05/2007</p>	<p>Digital Survey Plan</p> <p>DP 381841</p> <p>Deposited on: 06/07/2007</p>
--	--	--	---



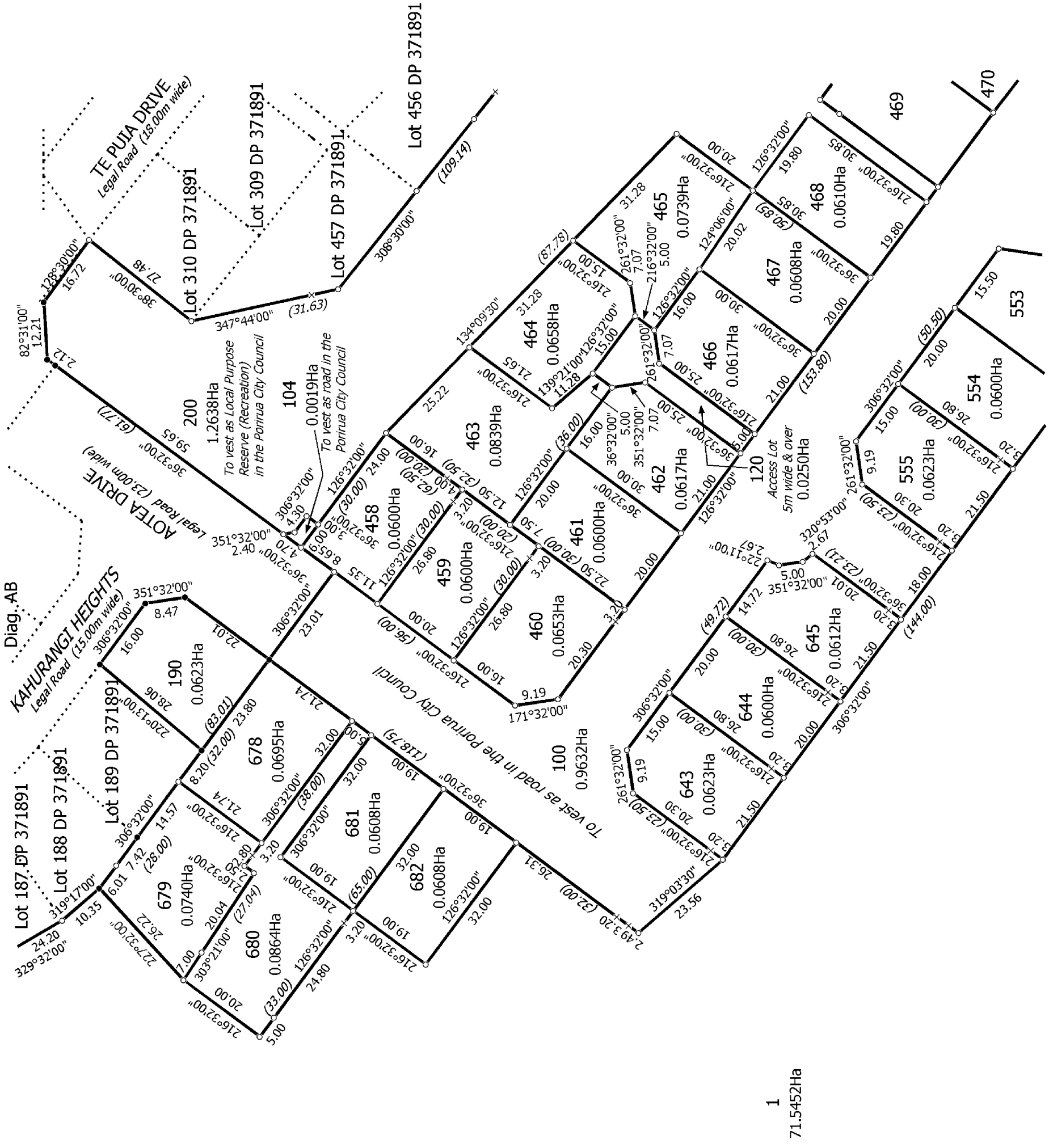
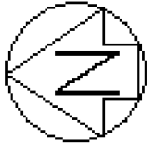
T 2/10

Digital Survey Plan
DP 381841
 Deposited on: 06/07/2007

Surveyor: Brett William Horne
 Firm: Harrison Grierson Consultants Limited
 Survey Date: 08/05/2007

Lots 1, 100, 101, 104, 120, 121, 190, 200, 458-497, 500-502, 506-508, 532-536, 553-555, 643-645 and 678-682 being a subdivision of Lot 3 DP 371891

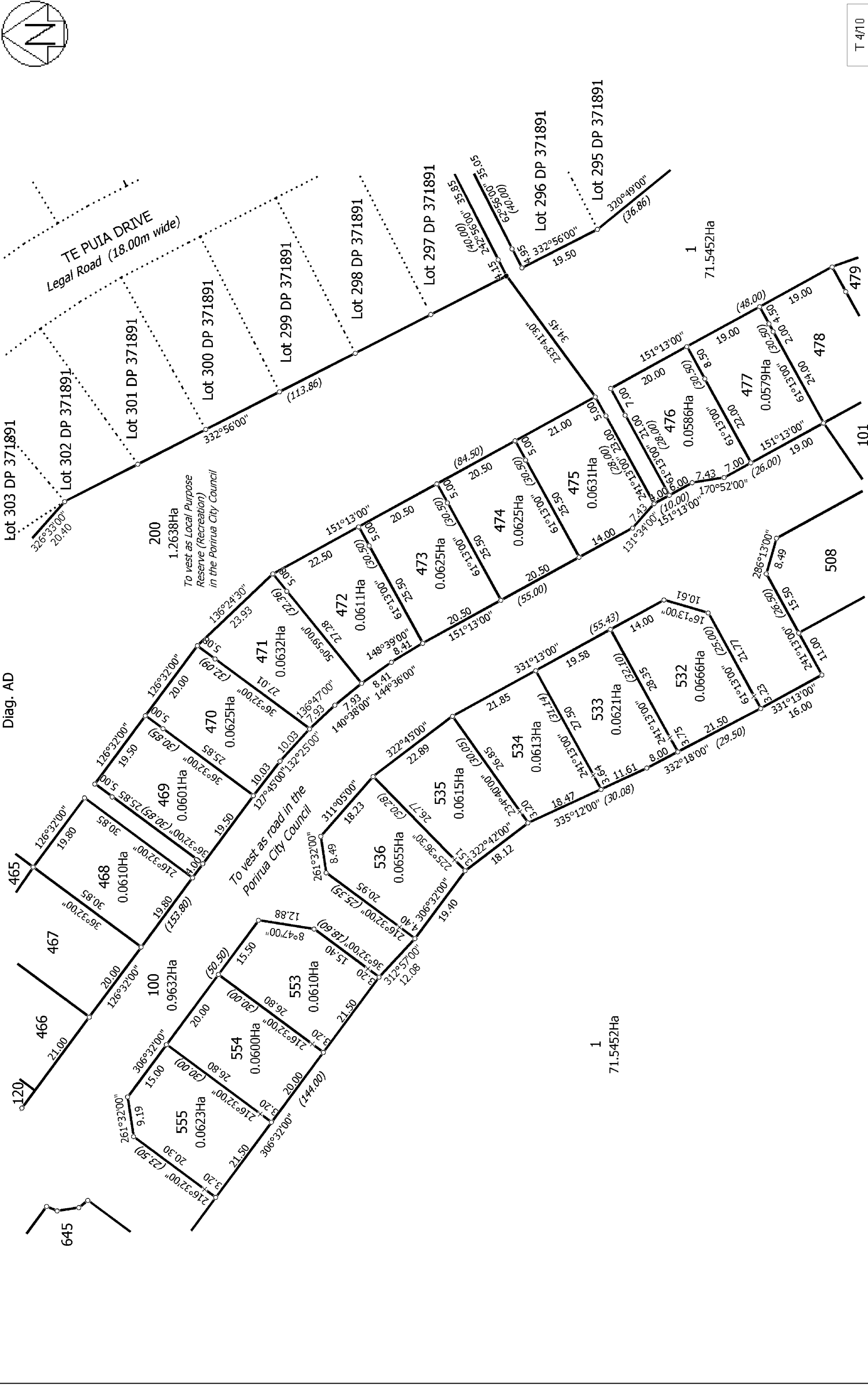
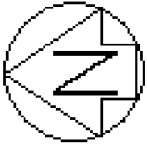
Land District: Wellington
 Digitally Generated Plan
 Generated on: 07/08/2007 12:56am Page 46 of 54



1
71.5452Ha

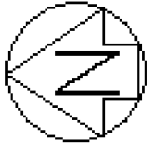
T 3/10

Land District: Wellington Digitally Generated Plan Generated on: 07/08/2007 12:56am Page 47 of 54	Lots 1, 100, 101, 104, 120, 121, 190, 200, 458-497, 500-502, 506-508, 532-536, 553- 555, 643-645 and 678-682 being a subdivision of Lot 3 DP 371891	Surveyor: Brett William Horne Firm: Harrison Grierson Consultants Limited Survey Date: 08/05/2007	Digital Survey Plan DP 381841 Deposited on: 06/07/2007
---	---	---	--



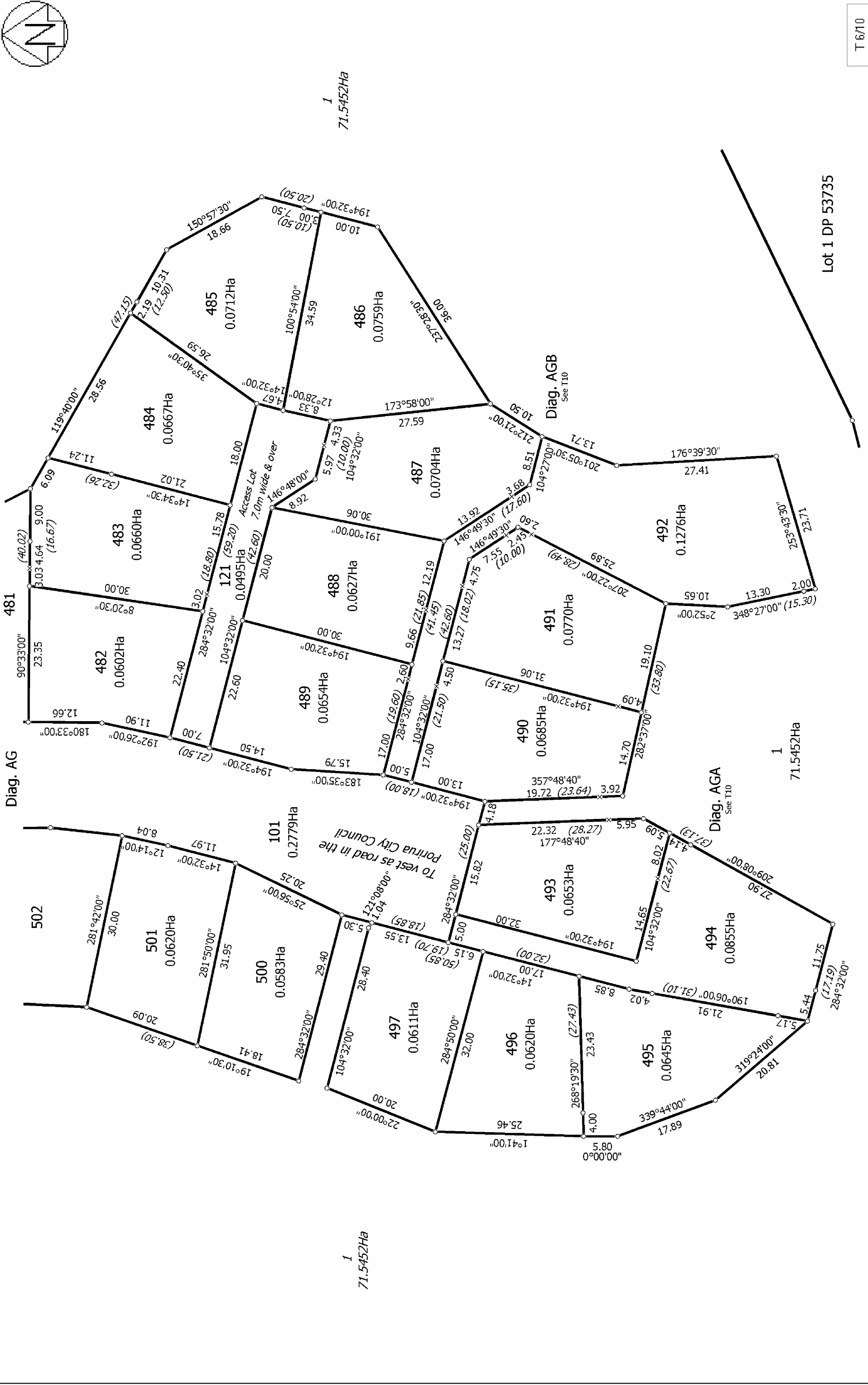
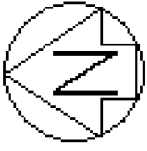
T 4/10

Land District: Wellington Digitally Generated Plan Generated on: 07/08/2007 12:56am Page 48 of 54	Lots 1, 100, 101, 104, 120, 121, 190, 200, 458-497, 502, 506-508, 532-536, 553- 555, 643-645 and 678-682 being a subdivision of Lot 3 DP 371891	Surveyor: Brett William Horne Firm: Harrison Grierson Consultants Limited Survey Date: 08/05/2007	Digital Survey Plan DP 381841 Deposited on: 06/07/2007
---	---	---	--



T 5/10

Land District: Wellington Digitally Generated Plan Generated on: 07/08/2007 12:56am Page 49 of 54	Lots 1, 100, 101, 104, 120, 121, 190, 200, 458-497, 500-502, 506-508, 532-536, 553- 555, 643-645 and 678-682 being a subdivision of Lot 3 DP 371891	Surveyor: Brett William Horne Firm: Harrison Grierson Consultants Limited Survey Date: 08/05/2007	Digital Survey Plan DP 381841 Deposited on: 06/07/2007
---	--	---	---



T 6/10

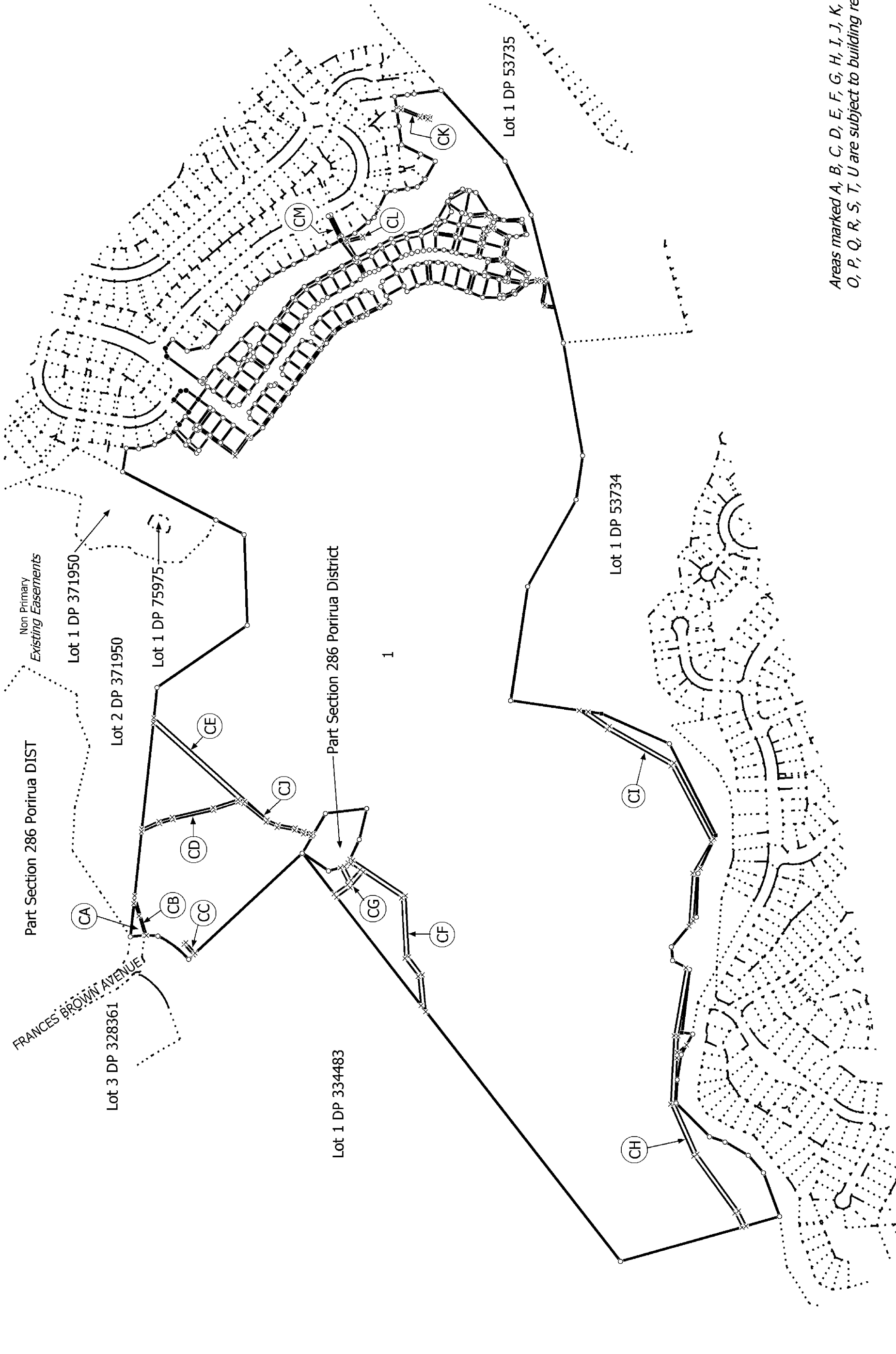
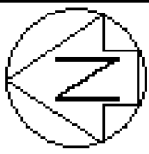
Digital Survey Plan
DP 381841

Surveyor: Brett William Horne
Firm: Harrison Grierson Consultants Limited
Survey Date: 08/05/2007

Lots 1, 100, 101, 104, 120, 121, 190, 200, 458-497, 500-502, 506-508, 532-536, 553-555, 643-645 and 678-682 being a subdivision of Lot 3 DP 371891

Land District: Wellington
Digitally Generated Plan
Generated on: 07/08/2007 12:56am Page 50 of 54

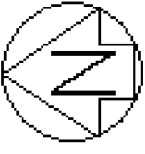
Deposited on: 06/07/2007



Areas marked A, B, C, D, E, F, G, H, I, J, K, L, M, N, O, P, Q, R, S, T, U are subject to building restrictions

T 7/10

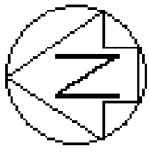
<p>Land District: Wellington Digitally Generated Plan Generated on: 07/08/2007 12:56am Page 51 of 54</p>	<p>Lots 1, 100, 101, 104, 120, 121, 190, 200, 458-497, 500-502, 506-508, 532-536, 553- 555, 643-645 and 678-682 being a subdivision of Lot 3 DP 371891</p>	<p>Surveyor: Brett William Horne Firm: Harrison Grierson Consultants Limited Survey Date: 08/05/2007</p>	<p>Digital Survey Plan DP 381841 Deposited on: 06/07/2007</p>
--	--	--	---



Areas marked A, B, C, D, E, F, G, H, I, J, K, L, M, N,
O, P, Q, R, S, T, U are subject to building restrictions

T 8/10

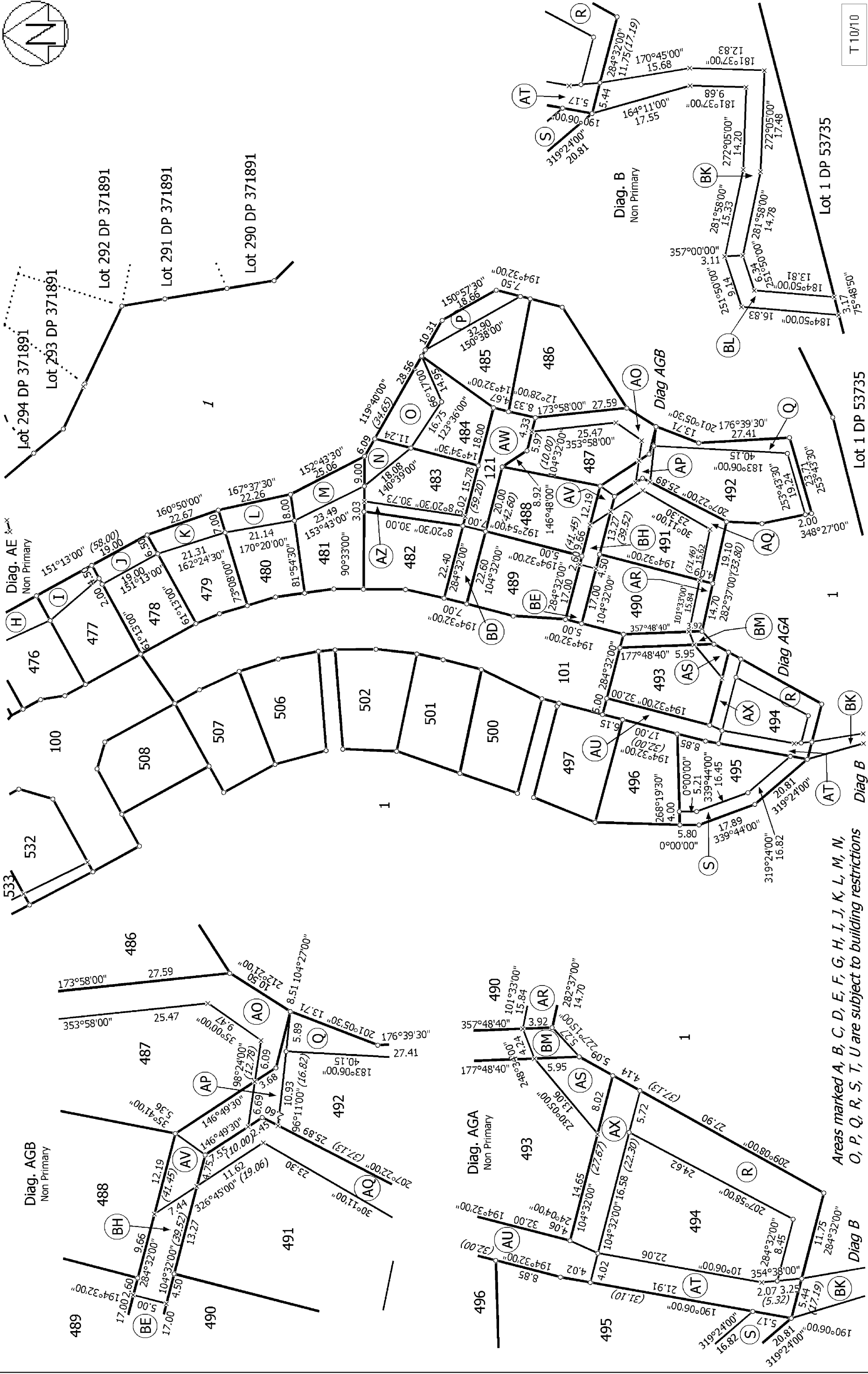
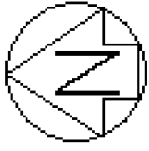
Land District: Wellington Digitally Generated Plan Generated on: 07/08/2007 12:56am Page 52 of 54	Lots 1, 100, 101, 104, 120, 121, 190, 200, 458-497, 500-502, 506-508, 532-536, 553- 555, 643-645 and 678-682 being a subdivision of Lot 3 DP 371891	Surveyor: Brett William Horne Firm: Harrison Grierson Consultants Limited Survey Date: 08/05/2007	Digital Survey Plan DP 381841 Deposited on: 06/07/2007
---	---	---	--



Areas marked A, B, C, D, E, F, G, H, I, J, K, L, M, N, O, P, Q, R, S, T, U are subject to building restrictions

T 9/10

Land District: Wellington Digitally Generated Plan Generated on: 07/08/2007 12:56am Page 53 of 54	Lots 1, 100, 101, 104, 120, 121, 190, 200, 458-497, 500-502, 506-508, 532-536, 553- 555, 643-645 and 678-682 being a subdivision of Lot 3 DP 371891	Surveyor: Brett William Horne Firm: Harrison Grierson Consultants Limited Survey Date: 08/05/2007	Digital Survey Plan DP 381841 Deposited on: 06/07/2007
---	---	---	--



Land District: Wellington
 Digitally Generated Plan
 Generated on: 07/08/2007 12:56am Page 54 of 54

Areas marked A, B, C, D, E, F, G, H, I, J, K, L, M, N, O, P, Q, R, S, T, U are subject to building restrictions

Lots 1, 100, 101, 104, 120, 121, 190, 200, 458-497, 500-502, 506-508, 532-536, 553-555, 643-645 and 678-682 being a subdivision of Lot 3 DP 371891

Surveyor: Brett William Horne
 Firm: Harrison Grierson Consultants Limited
 Survey Date: 08/05/2007

Digital Survey Plan
 DP 381841
 Deposited on: 06/07/2007