

Digital Survey Plan - DP 371891

Survey Number	DP 371891
Surveyor Reference	1850-000632-01
Surveyor	Stefan Imre Kiss
Survey Firm	Harrison Grierson Consultants Limited (Wellington)
Surveyor Declaration	I Stefan Imre Kiss, being a person entitled to practise as a licensed cadastral surveyor, certify that - (a) The surveys to which this dataset relates are accurate, and were undertaken by me or under my direction in accordance with the Cadastral Survey Act 2002 and the Surveyor-General's Rules for Cadastral Survey 2002/2; (b) This dataset is accurate, and has been created in accordance with that Act and those Rules. Declared on 28/09/2006.

Survey Details

Dataset Description	Lot 1-3,110-115,182-189,191-193,265-276,278-310,350-372,454-457,605,606 being a subdivision of Lot 1 DP 366936		
Purpose	LT Subdivision		
Status	Deposited	Type	Survey
Land District	Wellington	Survey Class	Class I Cadastral Survey
Coordinate System	Wellington 2000		

Survey Dates

Surveyed Date	20/06/2006	Certified Date	28/09/2006
Submitted Date	28/09/2006 15:59:39	Survey Approval Date	04/10/2006
Deposit Date	15/11/2006		

Referenced Surveys

Survey Number	Land District	Bearing Correction
DP 361171	Wellington	0°00'00"
DP 53735	Wellington	0°00'00"
DP 352503	Wellington	0°00'00"
DP 354489	Wellington	0°00'00"
DP 366936	Wellington	0°00'00"

Territorial Authorities

Porirua City

Comprised In

CT 277928

Created Parcels

Parcels	Parcel Intent	Area	CT Reference
Marked EJ Deposited Plan 371891	Land Covenant		
Marked DP Deposited Plan 371891	Easement		
Marked DQ Deposited Plan 371891	Easement		
Marked DT Deposited Plan 371891	Easement		

Digital Survey Plan - DP 371891

Created Parcels

Parcels	Parcel Intent	Area	CT Reference
Lot 2 Deposited Plan 371891	Vesting on Deposit for Recreation Reserve (Territorial Authority)	4.7241 ha	311569
Lot 1 Deposited Plan 371891	Fee Simple Title	6.3474 ha	294168
Lot 3 Deposited Plan 371891	Fee Simple Title	78.2511 ha	294169
Lot 110 Deposited Plan 371891	Vesting on Deposit for Local Purpose Reserve	0.7175 ha	311567
Lot 111 Deposited Plan 371891	Vesting on Deposit for Road	0.3049 ha	
Lot 112 Deposited Plan 371891	Vesting on Deposit for Road	0.3181 ha	
Lot 113 Deposited Plan 371891	Vesting on Deposit for Road	0.3162 ha	
Lot 114 Deposited Plan 371891	Vesting on Deposit for Road	0.2215 ha	
Lot 115 Deposited Plan 371891	Vesting on Deposit for Road	0.1335 ha	
Lot 182 Deposited Plan 371891	Fee Simple Title	0.0619 ha	294170
Lot 183 Deposited Plan 371891	Fee Simple Title	0.0600 ha	294171
Lot 184 Deposited Plan 371891	Fee Simple Title	0.0600 ha	294172
Lot 185 Deposited Plan 371891	Fee Simple Title	0.0621 ha	294173
Lot 186 Deposited Plan 371891	Fee Simple Title	0.0640 ha	294174
Lot 187 Deposited Plan 371891	Fee Simple Title	0.0627 ha	294175
Lot 188 Deposited Plan 371891	Fee Simple Title	0.0598 ha	294176
Lot 189 Deposited Plan 371891	Fee Simple Title	0.0623 ha	294177
Lot 191 Deposited Plan 371891	Fee Simple Title	0.0646 ha	294178
Lot 192 Deposited Plan 371891	Fee Simple Title	0.0652 ha	294179
Lot 193 Deposited Plan 371891	Fee Simple Title	0.0741 ha	294180
Lot 265 Deposited Plan 371891	Fee Simple Title	0.0698 ha	294181
Lot 266 Deposited Plan 371891	Fee Simple Title	0.0605 ha	294182
Lot 267 Deposited Plan 371891	Fee Simple Title	0.0600 ha	294183
Lot 268 Deposited Plan 371891	Fee Simple Title	0.0598 ha	294184
Lot 269 Deposited Plan 371891	Fee Simple Title	0.0650 ha	294185
Lot 270 Deposited Plan 371891	Fee Simple Title	0.1631 ha	294186
Lot 271 Deposited Plan 371891	Fee Simple Title	0.1251 ha	294187
Lot 272 Deposited Plan 371891	Fee Simple Title	0.0666 ha	294188
Lot 273 Deposited Plan 371891	Fee Simple Title	0.0553 ha	294189
Lot 274 Deposited Plan 371891	Fee Simple Title	0.0555 ha	294190
Lot 275 Deposited Plan 371891	Fee Simple Title	0.0613 ha	294191
Lot 276 Deposited Plan 371891	Fee Simple Title	0.0703 ha	294192
Lot 278 Deposited Plan 371891	Fee Simple Title	0.0599 ha	294193
Lot 279 Deposited Plan 371891	Fee Simple Title	0.0642 ha	294194
Lot 280 Deposited Plan 371891	Fee Simple Title	0.0593 ha	294195
Lot 281 Deposited Plan 371891	Fee Simple Title	0.0681 ha	294196
Lot 282 Deposited Plan 371891	Fee Simple Title	0.0649 ha	294197

Digital Survey Plan - DP 371891

Created Parcels

Parcels	Parcel Intent	Area	CT Reference
Lot 283 Deposited Plan 371891	Fee Simple Title	0.0806 ha	294198
Lot 284 Deposited Plan 371891	Fee Simple Title	0.0681 ha	294199
Lot 285 Deposited Plan 371891	Fee Simple Title	0.0612 ha	294200
Lot 286 Deposited Plan 371891	Fee Simple Title	0.0613 ha	294201
Lot 287 Deposited Plan 371891	Fee Simple Title	0.0601 ha	294202
Lot 288 Deposited Plan 371891	Fee Simple Title	0.0748 ha	294203
Lot 289 Deposited Plan 371891	Fee Simple Title	0.0721 ha	294204
Lot 290 Deposited Plan 371891	Fee Simple Title	0.0616 ha	294205
Lot 291 Deposited Plan 371891	Fee Simple Title	0.0624 ha	294206
Lot 292 Deposited Plan 371891	Fee Simple Title	0.0641 ha	294207
Lot 293 Deposited Plan 371891	Fee Simple Title	0.0651 ha	294208
Lot 294 Deposited Plan 371891	Fee Simple Title	0.0754 ha	294209
Lot 295 Deposited Plan 371891	Fee Simple Title	0.0797 ha	294210
Lot 296 Deposited Plan 371891	Fee Simple Title	0.0780 ha	294211
Lot 297 Deposited Plan 371891	Fee Simple Title	0.0780 ha	294212
Lot 298 Deposited Plan 371891	Fee Simple Title	0.0780 ha	294213
Lot 299 Deposited Plan 371891	Fee Simple Title	0.0780 ha	294214
Lot 300 Deposited Plan 371891	Fee Simple Title	0.0788 ha	294215
Lot 301 Deposited Plan 371891	Fee Simple Title	0.0772 ha	294216
Lot 302 Deposited Plan 371891	Fee Simple Title	0.0729 ha	294217
Lot 303 Deposited Plan 371891	Fee Simple Title	0.0665 ha	294218
Lot 304 Deposited Plan 371891	Fee Simple Title	0.0627 ha	294219
Lot 305 Deposited Plan 371891	Fee Simple Title	0.0686 ha	294220
Lot 306 Deposited Plan 371891	Fee Simple Title	0.0761 ha	294221
Lot 307 Deposited Plan 371891	Fee Simple Title	0.0564 ha	294222
Lot 308 Deposited Plan 371891	Fee Simple Title	0.0552 ha	294223
Lot 309 Deposited Plan 371891	Fee Simple Title	0.0632 ha	294224
Lot 310 Deposited Plan 371891	Fee Simple Title	0.0632 ha	294225
Lot 350 Deposited Plan 371891	Fee Simple Title	0.0687 ha	294226
Lot 351 Deposited Plan 371891	Fee Simple Title	0.0670 ha	294227
Lot 352 Deposited Plan 371891	Fee Simple Title	0.0659 ha	294228
Lot 353 Deposited Plan 371891	Fee Simple Title	0.0634 ha	294229
Lot 354 Deposited Plan 371891	Fee Simple Title	0.0685 ha	294230
Lot 355 Deposited Plan 371891	Fee Simple Title	0.0889 ha	294231
Lot 356 Deposited Plan 371891	Fee Simple Title	0.0759 ha	294232
Lot 357 Deposited Plan 371891	Fee Simple Title	0.0600 ha	294233
Lot 358 Deposited Plan 371891	Fee Simple Title	0.0600 ha	294234
Lot 359 Deposited Plan 371891	Fee Simple Title	0.0826 ha	294235
Lot 360 Deposited Plan 371891	Fee Simple Title	0.0722 ha	294236
Lot 361 Deposited Plan 371891	Fee Simple Title	0.0597 ha	294237
Lot 362 Deposited Plan 371891	Fee Simple Title	0.0558 ha	294238
Lot 363 Deposited Plan 371891	Fee Simple Title	0.0550 ha	294239
Lot 364 Deposited Plan 371891	Fee Simple Title	0.0595 ha	294240
Lot 365 Deposited Plan 371891	Fee Simple Title	0.0600 ha	294241

Digital Survey Plan - DP 371891

Created Parcels

Parcels	Parcel Intent	Area	CT Reference
Lot 366 Deposited Plan 371891	Fee Simple Title	0.0600 ha	294242
Lot 367 Deposited Plan 371891	Fee Simple Title	0.0600 ha	294243
Lot 368 Deposited Plan 371891	Fee Simple Title	0.0600 ha	294244
Lot 369 Deposited Plan 371891	Fee Simple Title	0.0573 ha	294245
Lot 370 Deposited Plan 371891	Fee Simple Title	0.0577 ha	294246
Lot 371 Deposited Plan 371891	Fee Simple Title	0.0599 ha	294247
Lot 372 Deposited Plan 371891	Fee Simple Title	0.0603 ha	294248
Lot 454 Deposited Plan 371891	Fee Simple Title	0.1015 ha	294249
Lot 455 Deposited Plan 371891	Fee Simple Title	0.0821 ha	294250
Lot 456 Deposited Plan 371891	Fee Simple Title	0.0663 ha	294251
Lot 457 Deposited Plan 371891	Fee Simple Title	0.0911 ha	294252
Lot 605 Deposited Plan 371891	Fee Simple Title	0.0379 ha	Multiple
Lot 606 Deposited Plan 371891	Fee Simple Title	0.0306 ha	Multiple
Pt Section 286 Porirua District	Fee Simple Title	0.5419 ha	
Marked AA Deposited Plan 371891	Easement		
Marked AB Deposited Plan 371891	Easement		
Marked AC Deposited Plan 371891	Easement		
Marked AD Deposited Plan 371891	Easement		
Marked AE Deposited Plan 371891	Easement		
Marked AF Deposited Plan 371891	Easement		
Marked AG Deposited Plan 371891	Easement		
Marked AH Deposited Plan 371891	Easement		
Marked AI Deposited Plan 371891	Easement		
Marked AJ Deposited Plan 371891	Easement		
Marked AK Deposited Plan 371891	Easement		
Marked AL Deposited Plan 371891	Easement		
Marked AM Deposited Plan 371891	Easement		
Marked AN Deposited Plan 371891	Easement		
Marked AO Deposited Plan 371891	Easement		
Marked AP Deposited Plan 371891	Land Covenant		
Marked AQ Deposited Plan 371891	Land Covenant		
Marked AR Deposited Plan 371891	Land Covenant		
Marked AS Deposited Plan 371891	Easement		
Marked AT Deposited Plan 371891	Land Covenant		
Marked AU Deposited Plan 371891	Land Covenant		
Marked AV Deposited Plan 371891	Land Covenant		
Marked AW Deposited Plan 371891	Land Covenant		
Marked AX Deposited Plan 371891	Land Covenant		
Marked AY Deposited Plan 371891	Land Covenant		
Marked AZ Deposited Plan 371891	Land Covenant		
Marked BA Deposited Plan 371891	Land Covenant		
Marked BB Deposited Plan 371891	Land Covenant		
Marked BC Deposited Plan 371891	Land Covenant		
Marked BD Deposited Plan 371891	Land Covenant		

Digital Survey Plan - DP 371891

Created Parcels

Parcels	Parcel Intent	Area	CT Reference
Marked BE Deposited Plan 371891	Land Covenant		
Marked BF Deposited Plan 371891	Land Covenant		
Marked BG Deposited Plan 371891	Land Covenant		
Marked BH Deposited Plan 371891	Land Covenant		
Marked BI Deposited Plan 371891	Land Covenant		
Marked BJ Deposited Plan 371891	Land Covenant		
Marked BK Deposited Plan 371891	Land Covenant		
Marked BL Deposited Plan 371891	Easement		
Marked BM Deposited Plan 371891	Easement		
Marked BN Deposited Plan 371891	Easement		
Marked BO Deposited Plan 371891	Land Covenant		
Marked BP Deposited Plan 371891	Land Covenant		
Marked BQ Deposited Plan 371891	Land Covenant		
Marked BR Deposited Plan 371891	Land Covenant		
Marked BS Deposited Plan 371891	Land Covenant		
Marked BT Deposited Plan 371891	Land Covenant		
Marked BU Deposited Plan 371891	Land Covenant		
Marked BW Deposited Plan 371891	Easement		
Marked CA Deposited Plan 371891	Easement		
Marked CB Deposited Plan 371891	Easement		
Marked CC Deposited Plan 371891	Easement		
Marked CD Deposited Plan 371891	Easement		
Marked CE Deposited Plan 371891	Easement		
Marked CF Deposited Plan 371891	Easement		
Marked CG Deposited Plan 371891	Easement		
Marked CH Deposited Plan 371891	Easement		
Marked CI Deposited Plan 371891	Easement		
Marked CJ Deposited Plan 371891	Easement		
Marked CK Deposited Plan 371891	Easement		
Marked CL Deposited Plan 371891	Easement		
Marked CM Deposited Plan 371891	Easement		
Marked CN Deposited Plan 371891	Easement		
Marked CO Deposited Plan 371891	Easement		
Marked CP Deposited Plan 371891	Easement		
Marked CQ Deposited Plan 371891	Easement		
Marked CR Deposited Plan 371891	Easement		
Marked CS Deposited Plan 371891	Easement		
Marked CT Deposited Plan 371891	Easement		
Marked CU Deposited Plan 371891	Easement		
Marked CV Deposited Plan 371891	Easement		
Marked CW Deposited Plan 371891	Easement		
Marked CX Deposited Plan 371891	Easement		
Marked CY Deposited Plan 371891	Easement		
Marked CZ Deposited Plan 371891	Easement		

Digital Survey Plan - DP 371891

Created Parcels

Parcels	Parcel Intent	Area	CT Reference
Marked DA Deposited Plan 371891	Easement		
Marked DB Deposited Plan 371891	Easement		
Marked DC Deposited Plan 371891	Easement		
Marked DD Deposited Plan 371891	Easement		
Marked DE Deposited Plan 371891	Easement		
Marked DF Deposited Plan 371891	Easement		
Marked DG Deposited Plan 371891	Easement		
Marked DH Deposited Plan 371891	Easement		
Marked DI Deposited Plan 371891	Easement		
Marked DJ Deposited Plan 371891	Easement		
Marked DK Deposited Plan 371891	Easement		
Marked DL Deposited Plan 371891	Easement		
Marked DM Deposited Plan 371891	Easement		
Marked DN Deposited Plan 371891	Easement		
Marked DO Deposited Plan 371891	Easement		
Marked DR Deposited Plan 371891	Easement		
Marked DU Deposited Plan 371891	Easement		
Marked DV Deposited Plan 371891	Easement		
Marked DW Deposited Plan 371891	Easement		
Marked DX Deposited Plan 371891	Easement		
Marked DY Deposited Plan 371891	Easement		
Marked DZ Deposited Plan 371891	Easement		
Marked EA Deposited Plan 371891	Easement		
Marked EB Deposited Plan 371891	Easement		
Marked EC Deposited Plan 371891	Easement		
Marked ED Deposited Plan 371891	Easement		
Marked EE Deposited Plan 371891	Easement		
Marked EF Deposited Plan 371891	Easement		
Marked EG Deposited Plan 371891	Easement		
Marked EH Deposited Plan 371891	Easement		
Marked FA Deposited Plan 371891	Easement		
Marked FB Deposited Plan 371891	Easement		
Marked FC Deposited Plan 371891	Easement		
Marked FD Deposited Plan 371891	Easement		
Marked FE Deposited Plan 371891	Easement		
Marked FF Deposited Plan 371891	Easement		
Marked FG Deposited Plan 371891	Easement		
Marked FH Deposited Plan 371891	Easement		
Marked FI Deposited Plan 371891	Easement		
Marked FJ Deposited Plan 371891	Easement		
Marked FK Deposited Plan 371891	Easement		
Marked FL Deposited Plan 371891	Easement		
Marked FM Deposited Plan 371891	Easement		
Marked FN Deposited Plan 371891	Easement		

Digital Survey Plan - DP 371891

Created Parcels

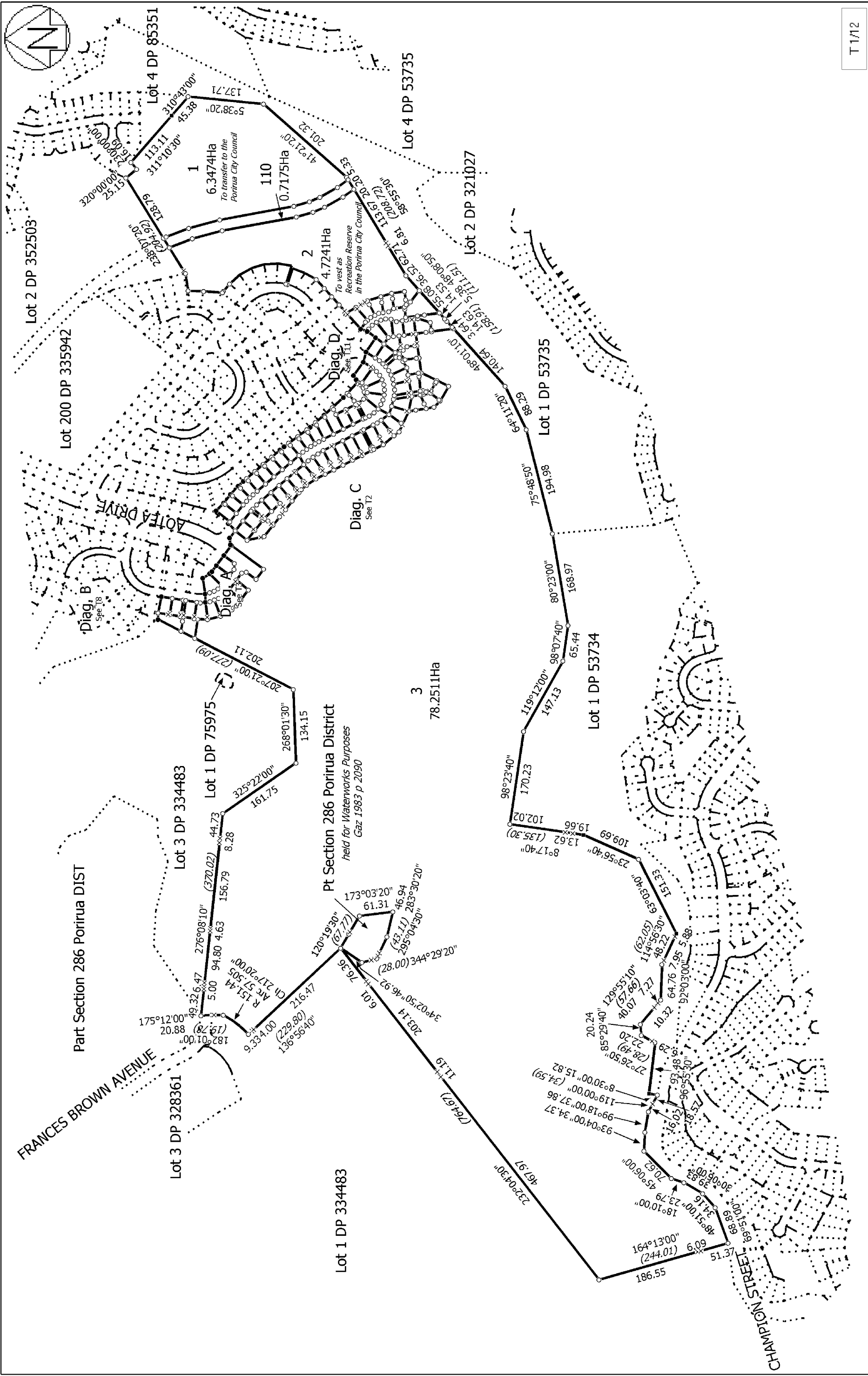
Parcels	Parcel Intent	Area	CT Reference
Marked EL Deposited Plan 371891	Easement		
Marked EK Deposited Plan 371891	Easement		
Marked BX Deposited Plan 371891	Easement		
Marked BY Deposited Plan 371891	Easement		
Total Area		<hr/> 97.6287 ha	

Memorandum of Easements			
(Pursuant to s243 Resource Management Act 1991)			
Purpose	Shown	Servient Tenement	Dominant Tenement
Right to drain sewage and stormwater	CJ	Lot 309 hereon	Lot 310 hereon
	DJ	Lot 285 hereon	Lot 286 hereon
	ED	Lot 357 hereon	Lot 358 hereon
	EK	Lot 283 hereon	Lot 284 hereon
	EL	Lot 456 hereon	Lot 307 hereon
Right to drain sewage	DQ	Lot 268 hereon	Lot 269 hereon
Right to drain stormwater	DW	Lot 265 hereon	Lot 266 hereon
Right of Way	BX	Lot 289 hereon	Lot 288 hereon
	BY	Lot 288 hereon	Lot 289 hereon
	CC	Lot 454 hereon	Lot 455 hereon
	CK	Lot 457 hereon	Lot 456 hereon
	DE	Lot 605 hereon	Lots 287, 288, 289, 290 and 291 hereon
	DF	Lot 605 hereon	Lots 287, 288, 289, 290 and 291 hereon
	DN	Lot 271 hereon	Lot 272 hereon
	DY	Lot 355 hereon	Lot 356 hereon
	EA	Lot 606 hereon	Lots 280, 281, 282 and 283 hereon
	EB	Lot 454 hereon	Lot 455 hereon
	EG	Lot 457 hereon	Lot 456 hereon
	EH	Lot 355 hereon	Lot 356 hereon
Right to convey water, electricity, gas, telecommunications and computer media	CC	Lot 454 hereon	Lot 455 hereon
	CK	Lot 457 hereon	Lot 456 hereon
	DE	Lot 605 hereon	Lots 287, 288, 289, 290 and 291 hereon
	DF	Lot 605 hereon	Lots 287, 288, 289, 290 and 291 hereon
	DN	Lot 271 hereon	Lot 272 hereon
	DY	Lot 355 hereon	Lot 356 hereon
	EA	Lot 606 hereon	Lots 280, 281, 282 and 283 hereon
	EB	Lot 454 hereon	Lot 455 hereon
	EG	Lot 457 hereon	Lot 456 hereon
Memorandum of Easements in Gross			
(Pursuant to s243 Resource Management Act 1991)			
Purpose	Shown	Servient Tenement	Grantee
Right to drain stormwater	DL	Lot 3 hereon	Porirua City Council
	DO	Lot 269 hereon	
	DP	Lot 269 hereon	
	EC	Lot 3 hereon	
	EE	Lot 300 hereon	
	EF	Lot 304 hereon	
Right to drain sewage	BW	Lot 266 hereon	Porirua City Council
	CA	Lot 182 hereon	
	CB	Lot 183 hereon	
	CZ	Lot 296 hereon	
	DA	Lot 295 hereon	
	DB	Lot 294 hereon	
	DR	Lot 268 hereon	
	DT	Lot 267 hereon	
	DU	Lot 266 hereon	

Memorandum of Easements in Gross (Pursuant to s243 Resource Management Act 1991)			
Purpose	Shown	Servient Tenement	Grantee
Right to drain sewage and stormwater	AA	Lot 371 hereon	Porirua City Council
	AB	Lot 370 hereon	
	AC	Lot 369 hereon	
	AD	Lot 368 hereon	
	AE	Lot 367 hereon	
	AF	Lot 366 hereon	
	AG	Lot 365 hereon	
	AH	Lot 364 hereon	
	AI	Lot 363 hereon	
	AJ	Lot 362 hereon	
	AK	Lot 361 hereon	
	AL	Lot 360 hereon	
	AM	Lot 359 hereon	
	AN	Lot 356 hereon	
	AO	Lot 355 hereon	
	AS	Lot 350 hereon	
	BL	Lot 288 hereon	
	BM	Lot 283 hereon	
	BN	Lot 282 hereon	
	BX	Lot 289 hereon	
	CC	Lot 454 hereon	
	CD	Lot 184 hereon	
	CE	Lot 185 hereon	
	CF	Lot 186 hereon	
	CG	Lot 187 hereon	
	CH	Lot 188 hereon	
	CI	Lot 189 hereon	
	CL	Lot 457 hereon	
	CM	Lot 456 hereon	
	CN	Lot 456 hereon	
	CO	Lot 306 hereon	
	CP	Lot 305 hereon	
	CQ	Lot 304 hereon	
	CR	Lot 303 hereon	
	CS	Lot 302 hereon	
	CT	Lot 301 hereon	
	CU	Lot 300 hereon	
	CV	Lot 299 hereon	
	CW	Lot 298 hereon	
	CX	Lot 297 hereon	
	CY	Lot 3 hereon	
	DC	Lot 293 hereon	
	DD	Lot 292 hereon	
	DF	Lot 605 hereon	
	DG	Lot 289 hereon	
	DH	Lot 288 hereon	
	DI	Lot 287 hereon	
	DJ	Lot 285 hereon	
	DK	Lot 281 hereon	
	DM	Lot 273 hereon	
	DN	Lot 271 hereon	
	DQ	Lot 268 hereon	
	DX	Lot 350 hereon	
	DZ	Lot 356 hereon	
	EA	Lot 606 hereon	
	EG	Lot 457 hereon	
	EH	Lot 355 hereon	

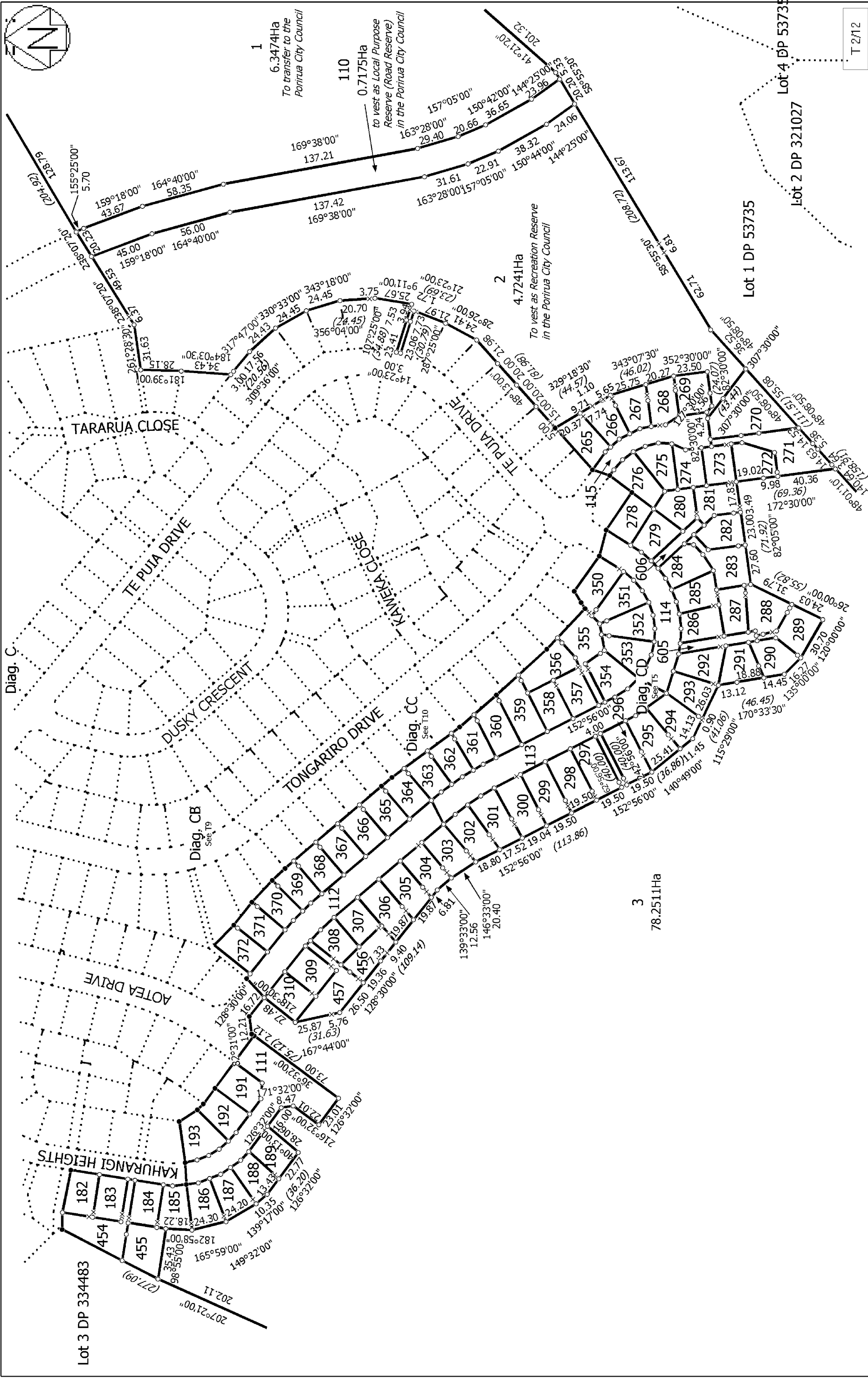
Schedule of Existing Easements in Gross				
Purpose/Interest	Servient Tenement	Shown	Created By	Grantee
Right to Convey Water	Lot 3 hereon	FD, FE	B.686066.3	Porirua City Council
	Lot 3 hereon	FG	B.557646.1	Wellington Regional Council
		FF	T.861524.2	
Right to drain Sewage	Lot 3 hereon	FA, FB	B.686066.3	Porirua City Council
	Lot 2 hereon	FC	B.686066.3	Porirua City Council
	Lot 2 hereon	DV	(see survey report)	
	Lot 2 hereon	FM	6948869.9	
Right to drain water	Lot 3 hereon	FI	B.686066.3	Porirua City Council
	Lot 2 hereon	FL	6948869.9	Porirua City Council
Right to drain sewage and water	Lot 2 hereon	FN	6948869.9	Porirua City Council
Right of Way	Lot 3 hereon	FF, FH, FK	T.861524.1	Porirua City Council

Schedule of Existing Easements			
Purpose/Interest	Servient Tenement	Shown	Created By
Right to convey electricity	Lot 3 hereon	FJ	B.604095.2



T 1/12

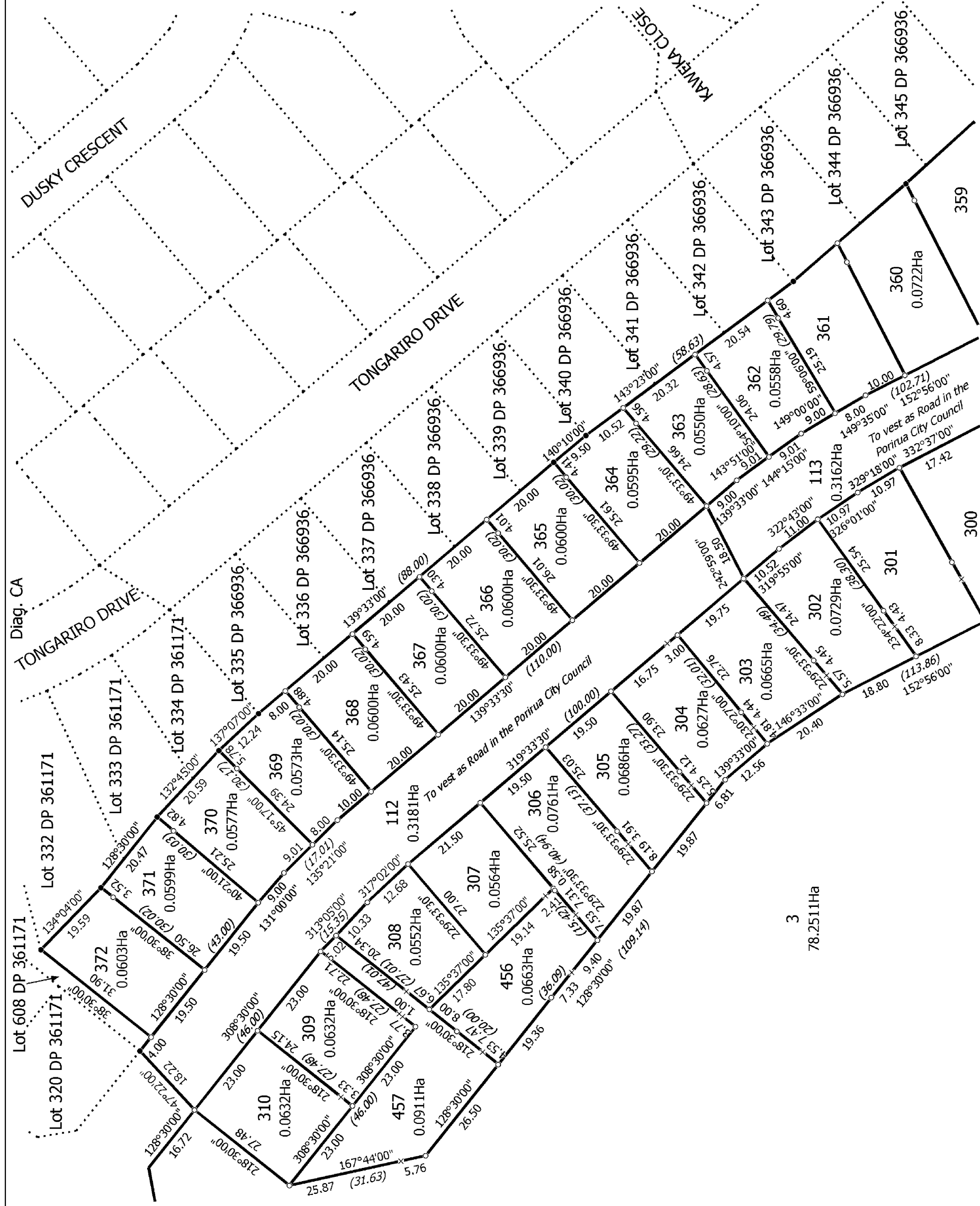
Land District: Wellington	Lot 1-3, 110-115, 182-189, 191-193, 265-276, 278-310, 350-372, 454-457, 605, 606 being a subdivision of Lot 1 DP 366936	Surveyor: Stefan Imre Kiss Firm: Harrison Grierson Consultants Limited Survey Date: 20/06/2006	Digital Survey Plan DP 371891 Deposited on: 15/11/2006
Digitally Generated Plan Generated on: 07/12/2006 4:34pm Page 56 of 67			



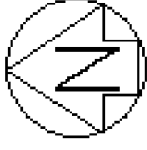
Land District: Wellington	Lot 1-3, 110-115, 182-189, 191-193, 265-276, 278-310, 350-372, 454-457, 605, 606 being a subdivision of Lot 1 DP 366936	Surveyor: Stefan Imre Kiss Firm: Harrison Grierson Consultants Limited Survey Date: 20/06/2006	Digital Survey Plan DP 371891
Digitally Generated Plan Generated on: 07/12/2006 4:34pm Page 57 of 67	Deposited on: 15/11/2006		



Land District: Wellington	Lot 1-3, 110-115, 182-189, 191-193, 265-276, 278-310, 350-372, 454-457, 605, 606 being a subdivision of Lot 1 DP 366936	Surveyor: Stefan Imre Kiss Firm: Harrison Grierson Consultants Limited Survey Date: 20/06/2006	Digital Survey Plan DP 371891 Deposited on: 15/11/2006
---------------------------	--	--	--



Land District: Wellington	Lot 1-3, 110-115, 182-189, 191-193, 265-276, 278-310, 350-372, 454-457, 605, 606 being a subdivision of Lot 1 DP 366936	Surveyor: Stefan Imre Kiss Firm: Harrison Grierson Consultants Limited Survey Date: 20/06/2006	Digital Survey Plan DP 371891 Deposited on: 15/11/2006
---------------------------	--	--	--



T 5/12

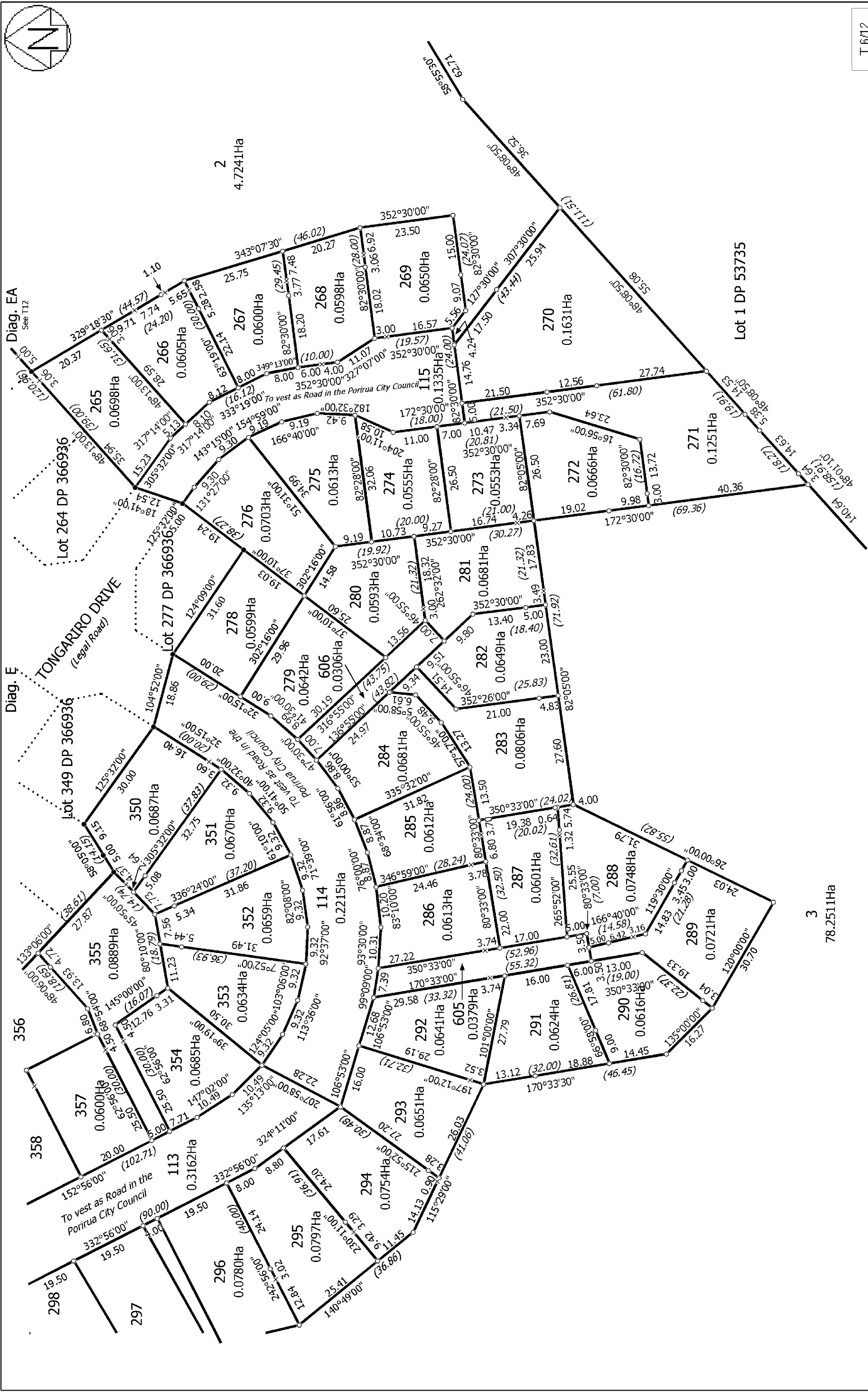
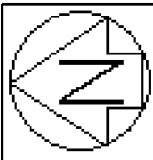
Land District: Wellington

Digitally Generated Plan
Generated on: 07/12/2006 4:34pm Page 60 of 67

Lot 1-3,110-115,182-189,191-193,265-276,278-310,350-372,454-457,605,606
being a subdivision of Lot 1 DP 366936

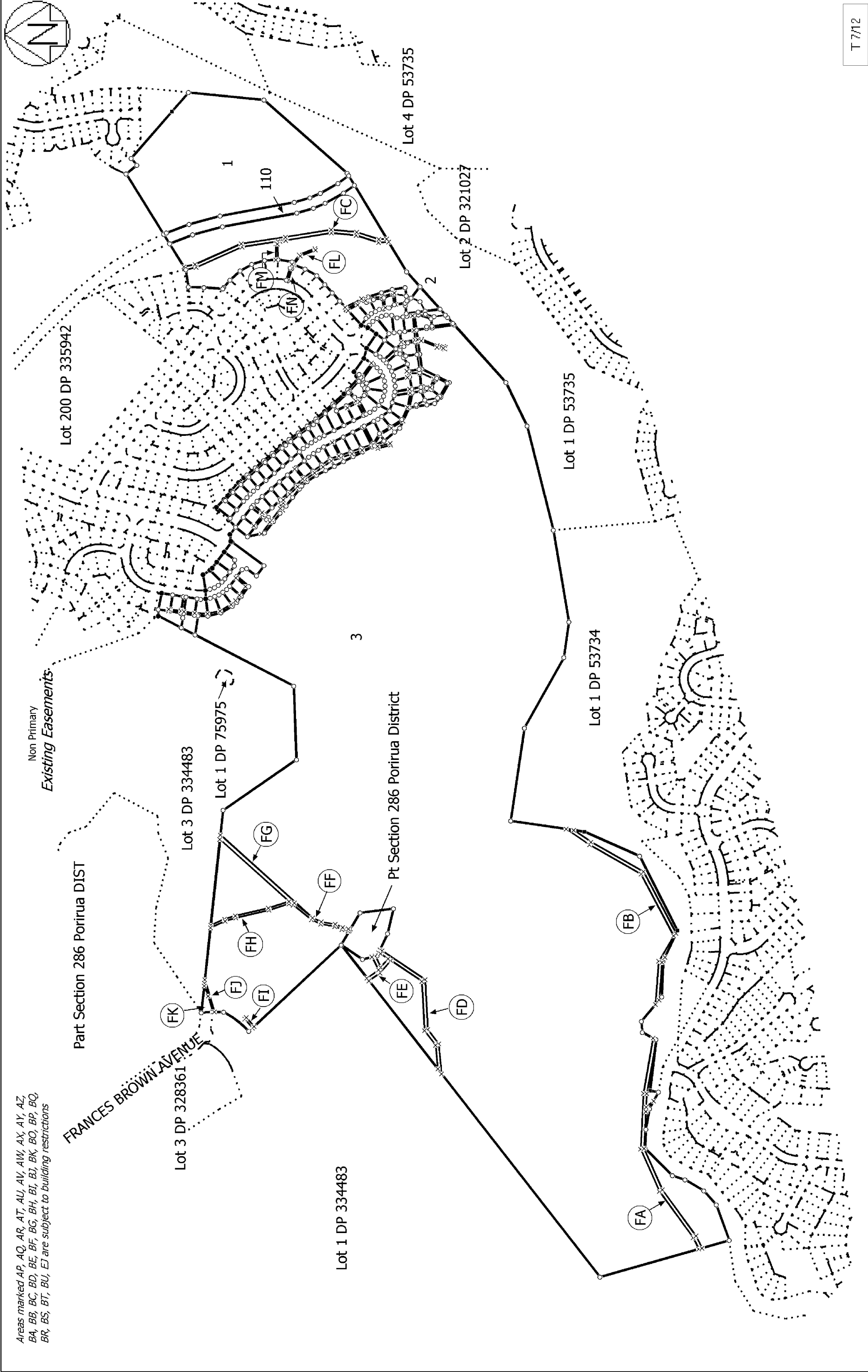
Surveyor: Stefan Imre Kiss
Firm: Harrison Grierson Consultants Limited
Survey Date: 20/06/2006

Digital Survey Plan
DP 371891
Deposited on: 15/11/2006

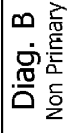


T 6/12

Land District: Wellington	Lot 1-3,110-115,182-189,191-193,265-276,278-310,350-372,454-457,605,606	Surveyor: Stefan Imre Kiss Firm: Harrison Grierson Consultants Limited Survey Date: 20/06/2006	Digital Survey Plan DP 371891 Deposited on: 15/11/2006
Digitally Generated Plan Generated on: 07/12/2006 4:34pm Page 61 of 67	being a subdivision of Lot 1 DP 366936		



Land District: Wellington	Lot 1-3, 110-115, 182-189, 191-193, 265-276, 278-310, 350-372, 454-457, 605, 606 being a subdivision of Lot 1 DP 366936	Surveyor: Stefan Imre Kiss Firm: Harrison Grierson Consultants Limited Survey Date: 20/06/2006	Digital Survey Plan DP 371891 Deposited on: 15/11/2006
Digitally Generated Plan Generated on: 07/12/2006 4:34pm Page 62 of 67			

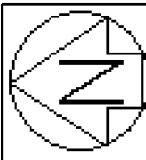


T8712

Surveyor: Stefan Imre Kiss

DP 371891

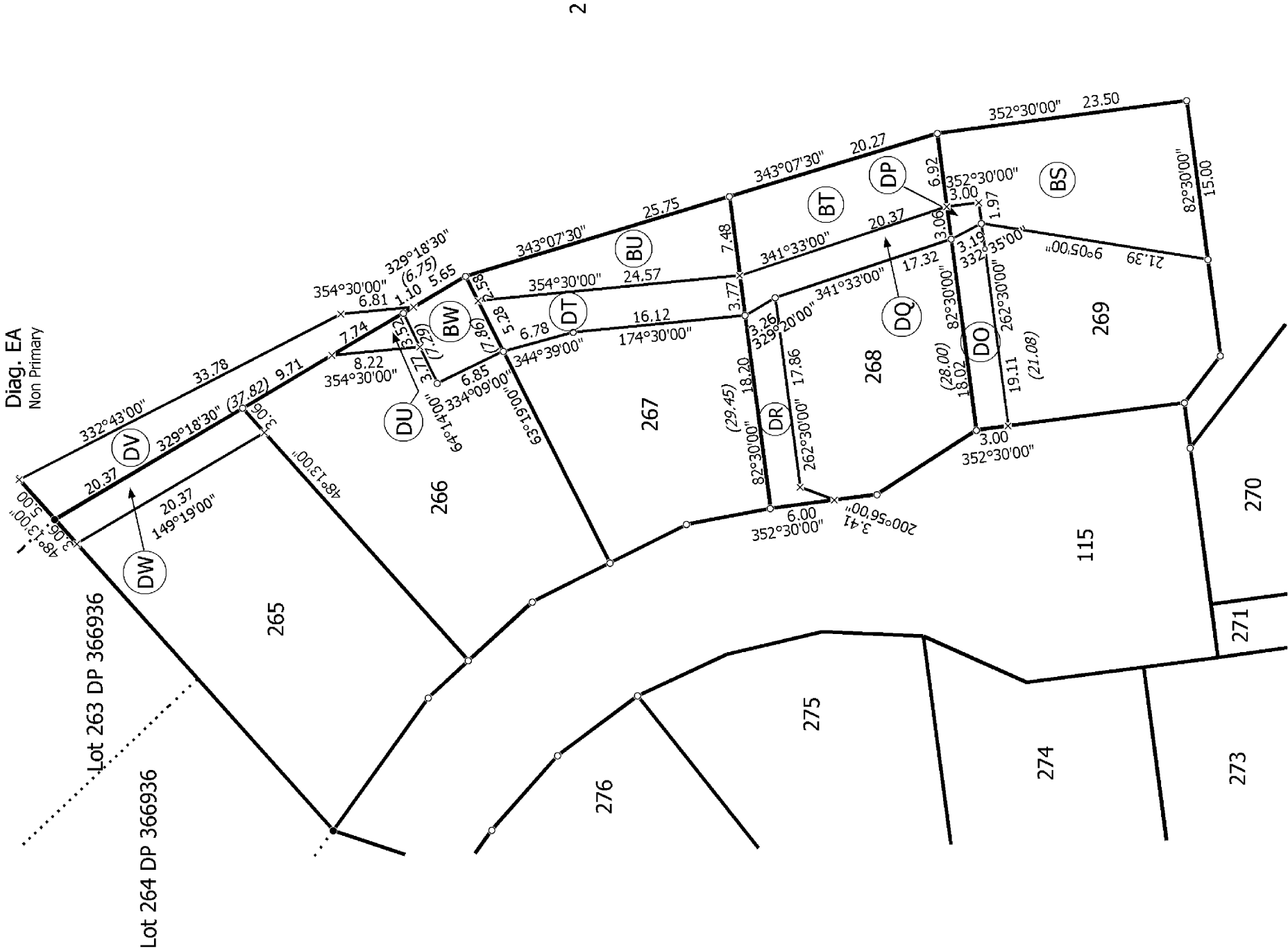
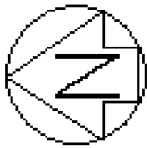
Deposited on: 15/11/2006



Areas marked AP, AQ, AR, AT, AU, AV, AW, AX, AY, AZ, BA, BB, BC, BD, BE, BF, BG, BH, BI, BJ, BK, BL, BM, BN, BO, BP, BQ, BR, BS, BT, BU, BV, BW, BX, BY, BZ, CA, CB, CC, CD, CE, CF, CG, CH, CI, CJ, CK, CL, CM, CN, CO, CP, CQ, CR, CS, CT, CU, CV, CW, CX, CY, CZ, DA, DB, DC, DD, DE, DF, DG, DH, DI, DJ, DK, DL, DM, DN, DO, DP, DQ, DR, DS, DT, DU, DV, DW, DX, DY, EZ are subject to building restrictions

T 10/12

Land District: Wellington	Lot 1-3, 110-115, 182-189, 191-193, 265-276, 278-310, 350-372, 454-457, 605, 606 being a subdivision of Lot 1 DP 366936	Surveyor: Stefan Imre Kiss Firm: Harrison Grierson Consultants Limited Survey Date: 20/06/2006	Digital Survey Plan DP 371891 Deposited on: 15/11/2006
Digitally Generated Plan Generated on: 07/12/2006 4:34pm Page 65 of 67			



Areas marked AP, AQ, AR, AT, AU, AV, AW, AX, AY, AZ, BA, BB, BC, BD, BE, BF, BG, BH, BI, BJ, BK, BL, BM, BN, BO, BP, BQ, BR, BS, BT, BU, BV, BW, BX, BY, BZ are subject to building restrictions

T 12/12

Land District: Wellington	Lot 1-3, 110-115, 182-189, 191-193, 265-276, 278-310, 350-372, 454-457, 605, 606 being a subdivision of Lot 1 DP 366936		Surveyor: Stefan Imre Kiss Firm: Harrison Grierson Consultants Limited Survey Date: 20/06/2006	Digital Survey Plan DP 371891 Deposited on: 15/11/2006
Digitally Generated Plan Generated on: 07/12/2006 4:34pm Page 67 of 67				