

Digital Survey Plan - DP 366936

Survey Number	DP 366936
Surveyor Reference	skiss001
Surveyor	Stefan Imre Kiss
Survey Firm	Harrison Grierson Consultants Limited (Wellington)
Surveyor Declaration	I Stefan Imre Kiss, being a person entitled to practise as a licensed cadastral surveyor, certify that - (a) The surveys to which this dataset relates are accurate, and were undertaken by me or under my direction in accordance with the Cadastral Survey Act 2002 and the Surveyor-General's Rules for Cadastral Survey 2002/2; (b) This dataset is accurate, and has been created in accordance with that Act and those Rules. Declared on 13/06/2006.

Survey Details

Dataset Description	Lots 1, 100-104, 251-264, 277, 335-349, 395-430, 453, 611 & 612 BEING A SUBDIVISION OF LOT 1 DP 361171		
Purpose	LT Subdivision		
Status	Deposited	Type	Survey
Land District	Wellington	Survey Class	Class I Cadastral Survey
Coordinate System	Wellington 2000		

Survey Dates

Surveyed Date	21/03/2006	Certified Date	13/06/2006
Submitted Date	13/06/2006 10:17:19	Survey Approval Date	14/06/2006
Deposit Date	14/07/2006		

Referenced Surveys

Survey Number	Land District	Bearing Correction
DP 352503	Wellington	0°00'00"
DP 354489	Wellington	0°00'00"
DP 361171	Wellington	0°00'00"

Territorial Authorities

Porirua City

Comprised In

CT 248537

Created Parcels

Parcels	Parcel Intent	Area	CT Reference
Lot 430 Deposited Plan 366936	Fee Simple Title	0.0611 ha	277859
Lot 429 Deposited Plan 366936	Fee Simple Title	0.0600 ha	277860
Lot 428 Deposited Plan 366936	Fee Simple Title	0.0600 ha	277861
Lot 427 Deposited Plan 366936	Fee Simple Title	0.0600 ha	277862
Lot 426 Deposited Plan 366936	Fee Simple Title	0.0600 ha	277863
Lot 425 Deposited Plan 366936	Fee Simple Title	0.0600 ha	277864
Lot 424 Deposited Plan 366936	Fee Simple Title	0.0600 ha	277865

Digital Survey Plan - DP 366936

Created Parcels

Parcels	Parcel Intent	Area	CT Reference
Lot 423 Deposited Plan 366936	Fee Simple Title	0.0679 ha	277866
Lot 422 Deposited Plan 366936	Fee Simple Title	0.0645 ha	277867
Lot 421 Deposited Plan 366936	Fee Simple Title	0.0600 ha	277868
Lot 420 Deposited Plan 366936	Fee Simple Title	0.0600 ha	277869
Lot 419 Deposited Plan 366936	Fee Simple Title	0.0600 ha	277870
Lot 418 Deposited Plan 366936	Fee Simple Title	0.0600 ha	277871
Lot 612 Deposited Plan 366936	Vesting on Deposit for Local Purpose Reserve	0.0090 ha	277872
Lot 417 Deposited Plan 366936	Fee Simple Title	0.0729 ha	277873
Lot 416 Deposited Plan 366936	Fee Simple Title	0.0687 ha	277874
Lot 415 Deposited Plan 366936	Fee Simple Title	0.1328 ha	277875
Lot 414 Deposited Plan 366936	Fee Simple Title	0.0752 ha	277876
Lot 413 Deposited Plan 366936	Fee Simple Title	0.0629 ha	277877
Lot 412 Deposited Plan 366936	Fee Simple Title	0.0627 ha	277878
Lot 411 Deposited Plan 366936	Fee Simple Title	0.0639 ha	277879
Lot 410 Deposited Plan 366936	Fee Simple Title	0.0607 ha	277880
Lot 409 Deposited Plan 366936	Fee Simple Title	0.0617 ha	277881
Lot 408 Deposited Plan 366936	Fee Simple Title	0.0847 ha	277882
Lot 407 Deposited Plan 366936	Fee Simple Title	0.0584 ha	277883
Lot 406 Deposited Plan 366936	Fee Simple Title	0.0592 ha	277884
Lot 405 Deposited Plan 366936	Fee Simple Title	0.0616 ha	277885
Lot 404 Deposited Plan 366936	Fee Simple Title	0.0728 ha	277886
Lot 403 Deposited Plan 366936	Fee Simple Title	0.0668 ha	277887
Lot 402 Deposited Plan 366936	Fee Simple Title	0.0600 ha	277888
Lot 401 Deposited Plan 366936	Fee Simple Title	0.0600 ha	277889
Lot 400 Deposited Plan 366936	Fee Simple Title	0.0600 ha	277890
Lot 399 Deposited Plan 366936	Fee Simple Title	0.0598 ha	277891
Lot 398 Deposited Plan 366936	Fee Simple Title	0.0552 ha	277892
Lot 397 Deposited Plan 366936	Fee Simple Title	0.0542 ha	277893
Lot 396 Deposited Plan 366936	Fee Simple Title	0.0520 ha	277894
Lot 395 Deposited Plan 366936	Fee Simple Title	0.0727 ha	277895
Lot 453 Deposited Plan 366936	Fee Simple Title	0.2139 ha	277896
Lot 611 Deposited Plan 366936	Fee Simple Title	0.0353 ha	Multiple
Lot 251 Deposited Plan 366936	Fee Simple Title	0.0649 ha	277898
Lot 252 Deposited Plan 366936	Fee Simple Title	0.0675 ha	277899
Lot 253 Deposited Plan 366936	Fee Simple Title	0.0672 ha	277900
Lot 254 Deposited Plan 366936	Fee Simple Title	0.0675 ha	277901
Lot 255 Deposited Plan 366936	Fee Simple Title	0.0716 ha	277902
Lot 256 Deposited Plan 366936	Fee Simple Title	0.0725 ha	277903
Lot 257 Deposited Plan 366936	Fee Simple Title	0.0613 ha	277904
Lot 258 Deposited Plan 366936	Fee Simple Title	0.0650 ha	277905
Lot 259 Deposited Plan 366936	Fee Simple Title	0.0660 ha	277906
Lot 260 Deposited Plan 366936	Fee Simple Title	0.0640 ha	277907
Lot 261 Deposited Plan 366936	Fee Simple Title	0.0640 ha	277908

Digital Survey Plan - DP 366936

Created Parcels

Parcels	Parcel Intent	Area	CT Reference
Lot 262 Deposited Plan 366936	Fee Simple Title	0.0640 ha	277909
Lot 263 Deposited Plan 366936	Fee Simple Title	0.0654 ha	277910
Lot 264 Deposited Plan 366936	Fee Simple Title	0.0641 ha	277911
Lot 277 Deposited Plan 366936	Fee Simple Title	0.0576 ha	277912
Lot 349 Deposited Plan 366936	Fee Simple Title	0.0649 ha	277913
Lot 348 Deposited Plan 366936	Fee Simple Title	0.0686 ha	277914
Lot 347 Deposited Plan 366936	Fee Simple Title	0.0672 ha	277915
Lot 346 Deposited Plan 366936	Fee Simple Title	0.0671 ha	277916
Lot 345 Deposited Plan 366936	Fee Simple Title	0.0681 ha	277917
Lot 344 Deposited Plan 366936	Fee Simple Title	0.0693 ha	277918
Lot 343 Deposited Plan 366936	Fee Simple Title	0.0697 ha	277919
Lot 342 Deposited Plan 366936	Fee Simple Title	0.0669 ha	277920
Lot 341 Deposited Plan 366936	Fee Simple Title	0.0643 ha	277921
Lot 340 Deposited Plan 366936	Fee Simple Title	0.0618 ha	277922
Lot 339 Deposited Plan 366936	Fee Simple Title	0.0604 ha	277923
Lot 338 Deposited Plan 366936	Fee Simple Title	0.0603 ha	277924
Lot 337 Deposited Plan 366936	Fee Simple Title	0.0603 ha	277925
Lot 336 Deposited Plan 366936	Fee Simple Title	0.0603 ha	277926
Lot 335 Deposited Plan 366936	Fee Simple Title	0.0603 ha	277927
Lot 100 Deposited Plan 366936	Vesting on Deposit for Road	0.2896 ha	
Lot 101 Deposited Plan 366936	Vesting on Deposit for Road	0.2424 ha	
Lot 102 Deposited Plan 366936	Vesting on Deposit for Road	0.3252 ha	
Lot 103 Deposited Plan 366936	Vesting on Deposit for Road	0.2624 ha	
Lot 104 Deposited Plan 366936	Vesting on Deposit for Road	0.1823 ha	
Marked AA Deposited Plan 366936	Land Covenant		
Marked AB Deposited Plan 366936	Land Covenant		
Marked AC Deposited Plan 366936	Land Covenant		
Marked AD Deposited Plan 366936	Land Covenant		
Marked AE Deposited Plan 366936	Land Covenant		
Marked AF Deposited Plan 366936	Land Covenant		
Marked AG Deposited Plan 366936	Land Covenant		
Marked AH Deposited Plan 366936	Land Covenant		
Marked AI Deposited Plan 366936	Land Covenant		
Marked AJ Deposited Plan 366936	Land Covenant		
Marked AK Deposited Plan 366936	Land Covenant		
Marked AL Deposited Plan 366936	Land Covenant		
Marked AM Deposited Plan 366936	Land Covenant		
Marked AN Deposited Plan 366936	Land Covenant		
Marked AO Deposited Plan 366936	Land Covenant		
Marked AP Deposited Plan 366936	Land Covenant		

Digital Survey Plan - DP 366936

Created Parcels

Parcels	Parcel Intent	Area	CT Reference
Marked AQ Deposited Plan 366936	Land Covenant		
Marked AR Deposited Plan 366936	Land Covenant		
Marked AS Deposited Plan 366936	Land Covenant		
Marked AT Deposited Plan 366936	Land Covenant		
Marked AU Deposited Plan 366936	Land Covenant		
Marked AV Deposited Plan 366936	Land Covenant		
Marked AW Deposited Plan 366936	Land Covenant		
Marked AX Deposited Plan 366936	Land Covenant		
Marked AY Deposited Plan 366936	Land Covenant		
Marked AZ Deposited Plan 366936	Land Covenant		
Marked BA Deposited Plan 366936	Land Covenant		
Marked BB Deposited Plan 366936	Land Covenant		
Marked BC Deposited Plan 366936	Land Covenant		
Marked BD Deposited Plan 366936	Land Covenant		
Marked BE Deposited Plan 366936	Land Covenant		
Marked CA Deposited Plan 366936	Easement		
Marked CB Deposited Plan 366936	Easement		
Marked CC Deposited Plan 366936	Easement		
Marked CD Deposited Plan 366936	Easement		
Marked CE Deposited Plan 366936	Easement		
Marked EB Deposited Plan 366936	Easement		
Marked CF Deposited Plan 366936	Easement		
Marked EC Deposited Plan 366936	Easement		
Marked CG Deposited Plan 366936	Easement		
Marked CH Deposited Plan 366936	Easement		
Marked CI Deposited Plan 366936	Easement		
Marked CJ Deposited Plan 366936	Easement		
Marked CK Deposited Plan 366936	Easement		
Marked CL Deposited Plan 366936	Easement		
Marked CM Deposited Plan 366936	Easement		
Marked CN Deposited Plan 366936	Easement		
Marked CO Deposited Plan 366936	Easement		
Marked CP Deposited Plan 366936	Easement		
Marked CQ Deposited Plan 366936	Easement		
Marked CR Deposited Plan 366936	Easement		
Marked CS Deposited Plan 366936	Easement		
Marked DI Deposited Plan 366936	Easement		
Marked CT Deposited Plan 366936	Easement		
Marked ED Deposited Plan 366936	Easement		
Marked CU Deposited Plan 366936	Easement		
Marked CV Deposited Plan 366936	Easement		
Marked CW Deposited Plan 366936	Easement		
Marked CX Deposited Plan 366936	Easement		
Marked CY Deposited Plan 366936	Easement		

Digital Survey Plan - DP 366936

Created Parcels

Parcels	Parcel Intent	Area	CT Reference
Marked EE Deposited Plan 366936	Easement		
Marked EF Deposited Plan 366936	Easement		
Marked EG Deposited Plan 366936	Easement		
Marked EH Deposited Plan 366936	Easement		
Marked EI Deposited Plan 366936	Easement		
Marked CZ Deposited Plan 366936	Easement		
Marked DA Deposited Plan 366936	Easement		
Marked DB Deposited Plan 366936	Easement		
Marked DC Deposited Plan 366936	Easement		
Marked DD Deposited Plan 366936	Easement		
Marked DE Deposited Plan 366936	Easement		
Marked DF Deposited Plan 366936	Easement		
Marked DG Deposited Plan 366936	Easement		
Marked DH Deposited Plan 366936	Easement		
Marked EA Deposited Plan 366936	Easement		
Lot 1 Deposited Plan 366936	Fee Simple Title	97.0896 ha	277928
Marked EJ Deposited Plan 366936	Easement		
Marked EK Deposited Plan 366936	Easement		
Part Section 286 Porirua District	Fee Simple Title	0.5419 ha	
Marked DL Deposited Plan 366936	Easement		
Total Area		<u>103.4761 ha</u>	

Memorandum of Easements in Gross (Pursuant to s243 Resource Management Act 1991)			
Purpose	Shown	Servient Tenement	Grantee
Right to drain Sewage and Stormwater	CA	Lot 251 hereon	Porirua City Council
	CC	Lot 254 hereon	
	CD	Lot 255 hereon	
	CE	Lot 256 hereon	
	CG	Lot 257 hereon	
	CH	Lot 258 hereon	
	CI	Lot 1 hereon	
	CK	Lot 259 hereon	
	CL	Lot 260 hereon	
	CM	Lot 261 hereon	
	CN	Lot 262 hereon	
	CO	Lot 263 hereon	
	CP	Lot 264 hereon	
	CQ	Lot 429 hereon	
	CR	Lot 428 hereon	
	CS	Lot 427 hereon	
	CT	Lot 426 hereon	
	CU	Lot 425 hereon	
	CV	Lot 424 hereon	
	CW	Lot 422 hereon	
	CX	Lot 416 hereon	
	CY	Lot 412 hereon	
	CZ	Lot 410 hereon	
	DA	Lot 409 hereon	
	DB	Lot 405 hereon	
	DC	Lot 611 hereon	
	DE	Lot 408 hereon	
	DF	Lot 414 hereon	
	DG	Lot 415 hereon	
	DH	Lot 453 hereon	
	DI	Lot 400 hereon	

Memorandum of Easements in Gross (Pursuant to s243 Resource Management Act 1991)			
Purpose	Shown	Servient Tenement	Grantee
Right to drain Stormwater	CJ	Lot 1 hereon	Porirua City Council
Right to drain Sewage	CF	Lot 1 hereon	Porirua City Council

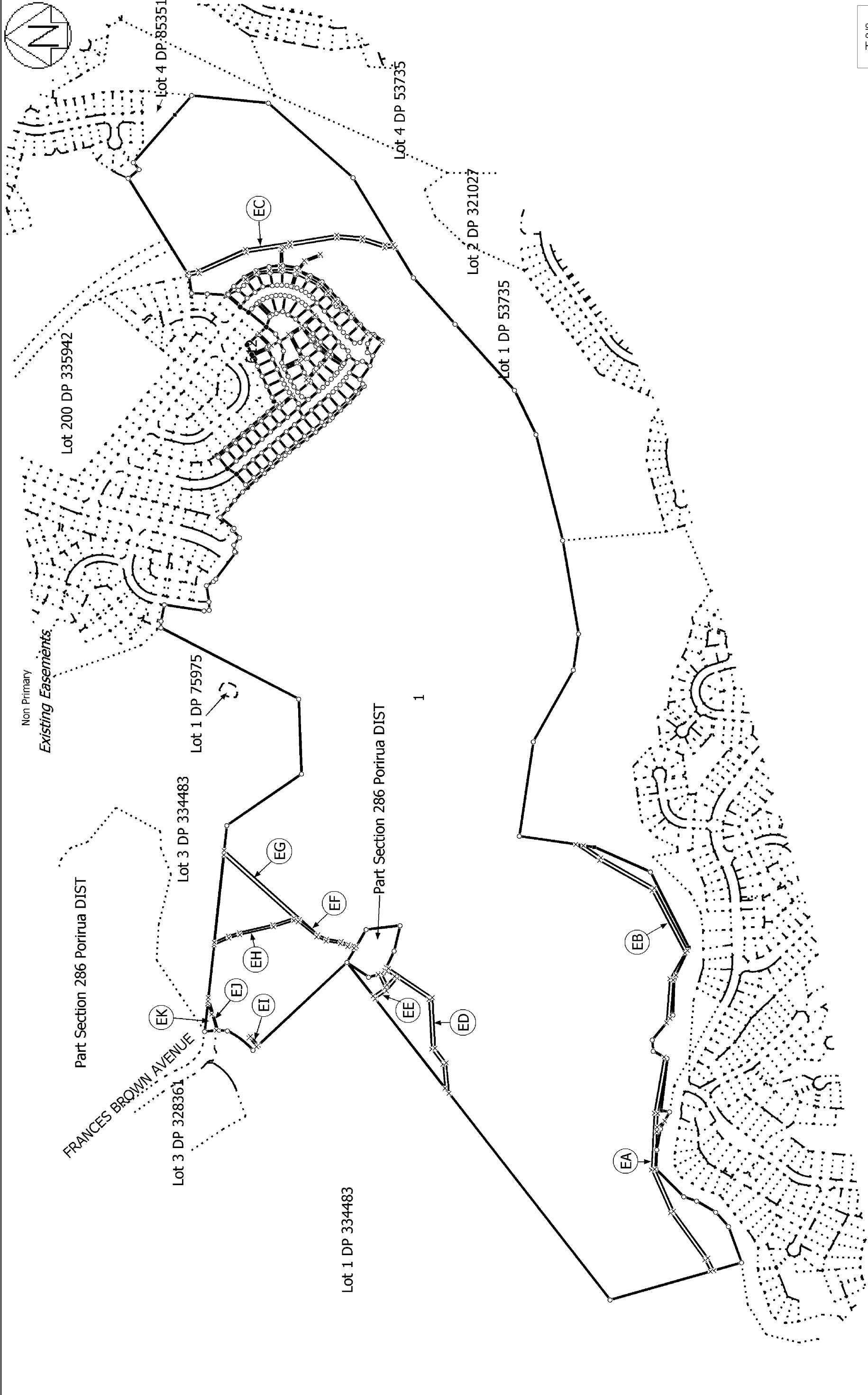
Memorandum of Easements (Pursuant to s243 Resource Management Act 1991)			
Purpose	Shown	Servient Tenement	Dominant Tenement
Right to drain Sewage and Stormwater	DL	Lot 277 hereon	Lot 1 hereon
	CB	Lot 253 hereon	Lot 252 hereon
	DD	Lot 611 hereon	Lot 405 hereon
Right of Way	DD & DC	Lot 611 hereon	Lots 406, 407 and 408 hereon
Right to convey Water, Electricity, Gas, Telecommunications, Computer media	DD & DC	Lot 611 hereon	Lots 406, 407 and 408 hereon

Schedule of Existing Easements in Gross				
Purpose/Interest	Servient Tenement	Shown	Created By	Grantee
Right to Convey Water	Lot 1 Hereon	ED, EE	B.686066.3	Porirua City Council
	Lot 1 Hereon	EG	B.557646.1	Wellington Regional Council
		EF	T.861524.2	
Right to drain Sewage	Lot 1 Hereon	EA, EB, EC	B.686066.3	Porirua City Council
Right to drain Stormwater	Lot 1 Hereon	EI	B.686066.3	Porirua City Council
Right of Way	Lot 1 Hereon	EF, EH, EK	T.861524.1	Porirua City Council

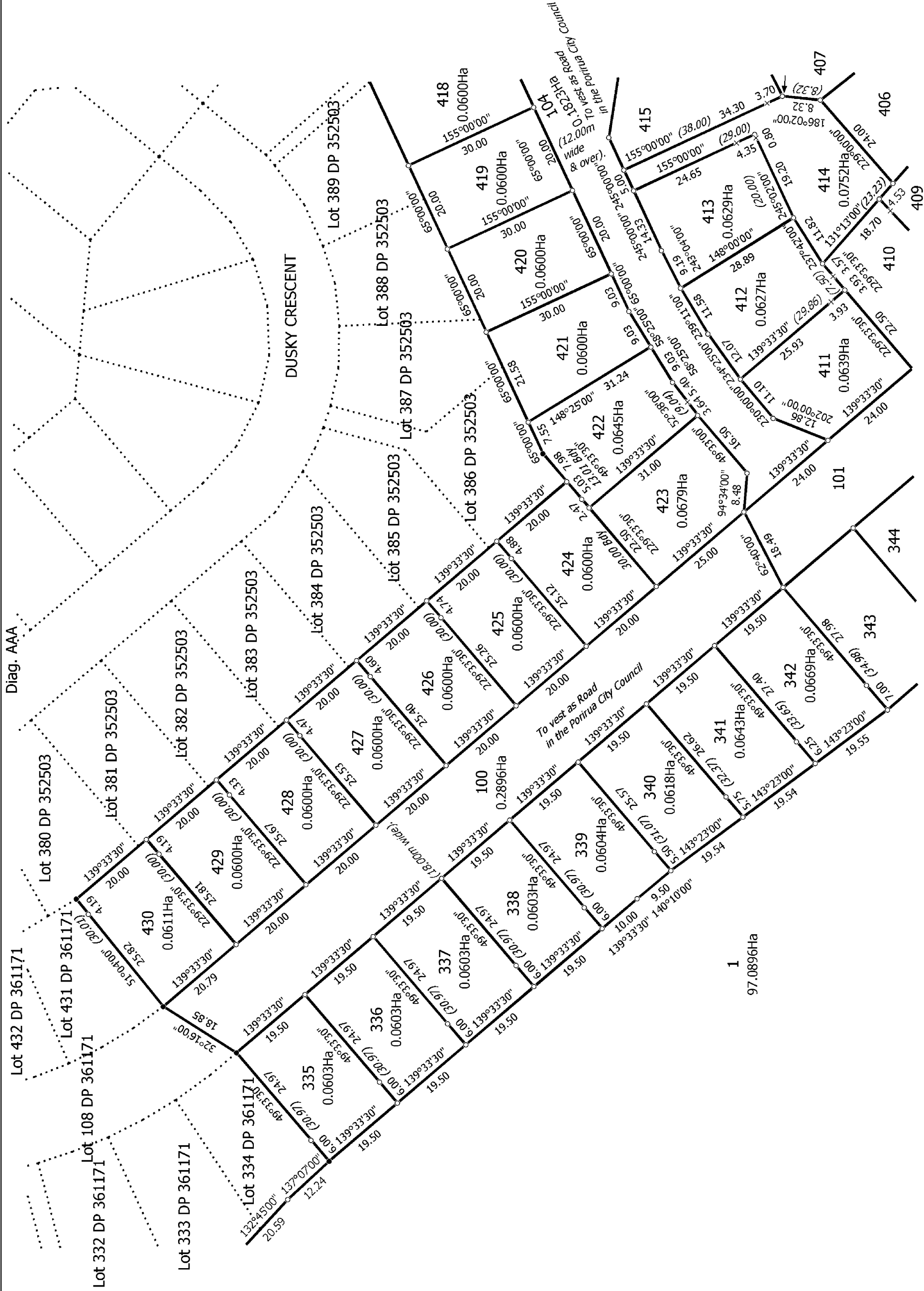
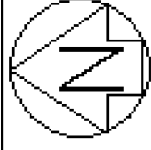
Schedule of Existing Easements			
Purpose/Interest	Servient Tenement	Shown	Created By
Right to convey electricity	Lot 1 hereon	EJ	B.604095.2

Schedule of Easements to be relinquished			
Purpose/Interest	Servient Tenement	Shown	Created By
Right to drain sewage and stormwater	Lots 103 and 251 hereon	BQ on DP 352503	EI 6591753.6

J:\1850\00632_a\LT Survey\Stage 4C, D and E\Survey\easement schedule-Rev C.doc

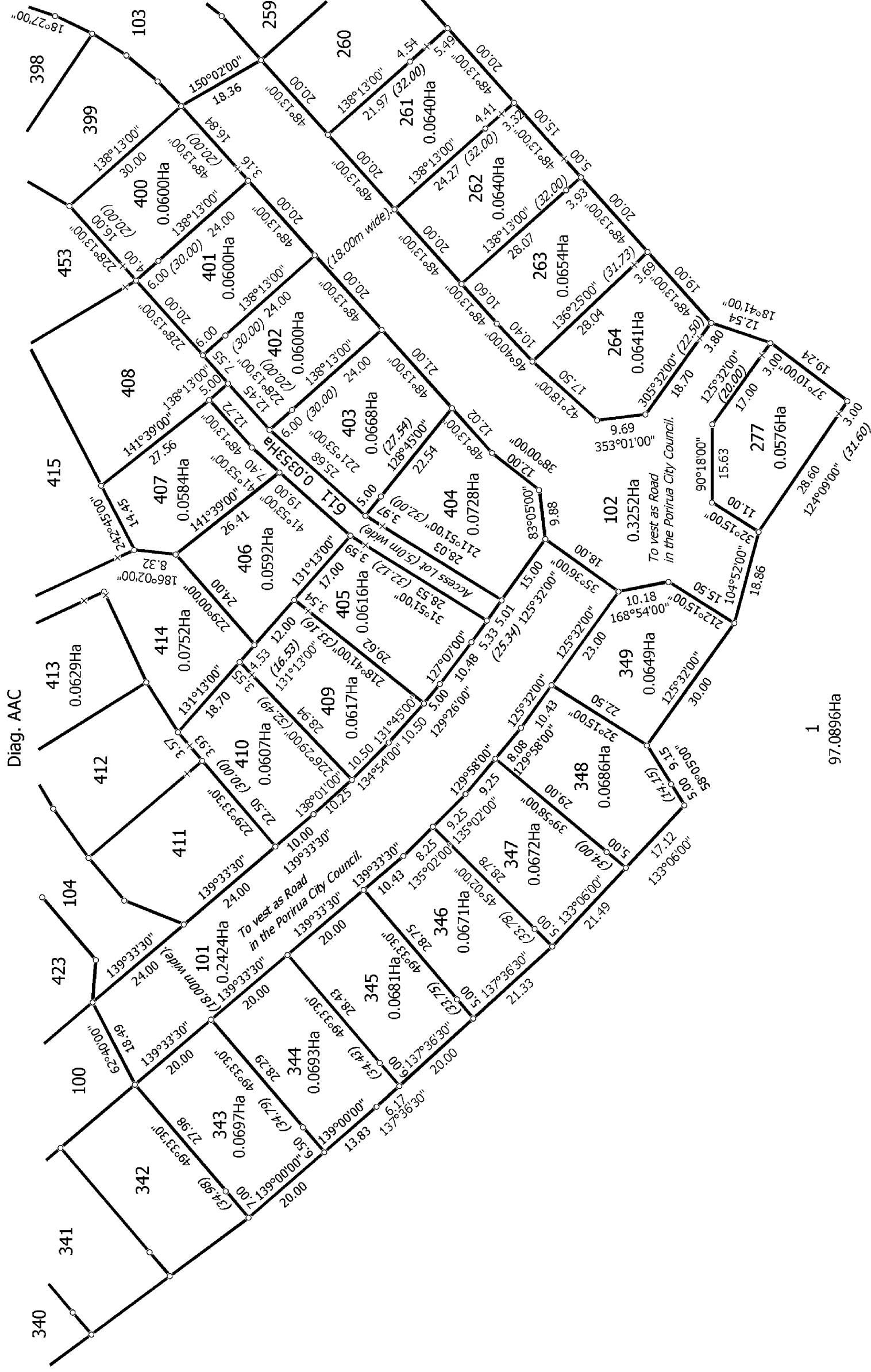
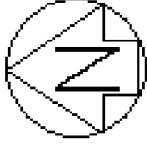


T 2/9			
Land District: Wellington	Lots 1, 100-104, 251-264, 277, 335-349, 395-430, 453, 611 & 612 BEING A SUBDIVISION OF LOT 1 DP 361171	Surveyor: Stefan Imre Kiss Firm: Harrison Grierson Consultants Limited Survey Date: 21/03/2006	Digital Survey Plan DP 366936 Deposited on: 14/07/2006
Digitally Generated Plan Generated on: 08/08/2006 4:53pm Page 41 of 48			



T 4/9

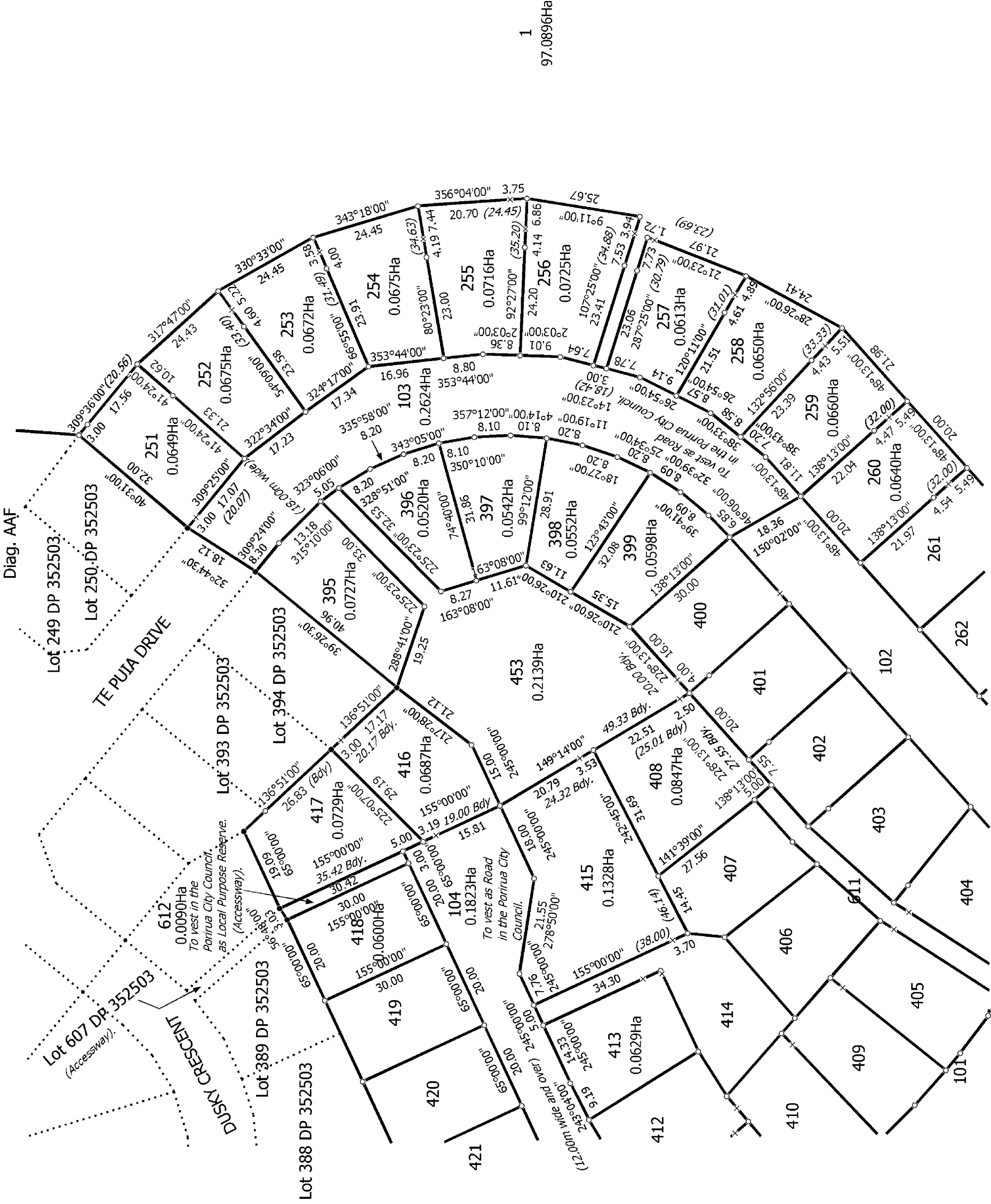
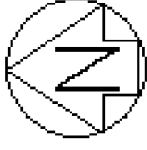
Land District: Wellington	Lots 1, 100-104, 251-264, 277, 335-349, 395-430, 453, 611 & 612 BEING A SUBDIVISION OF LOT 1 DP 361171	Surveyor: Stefan Imre Kiss Firm: Harrison Grierson Consultants Limited Survey Date: 21/03/2006	Digital Survey Plan DP 366936
Digitally Generated Plan Generated on: 08/08/2006 4:53pm Page 43 of 48	Deposited on: 14/07/2006		



1
97.0896Ha

T 5/9

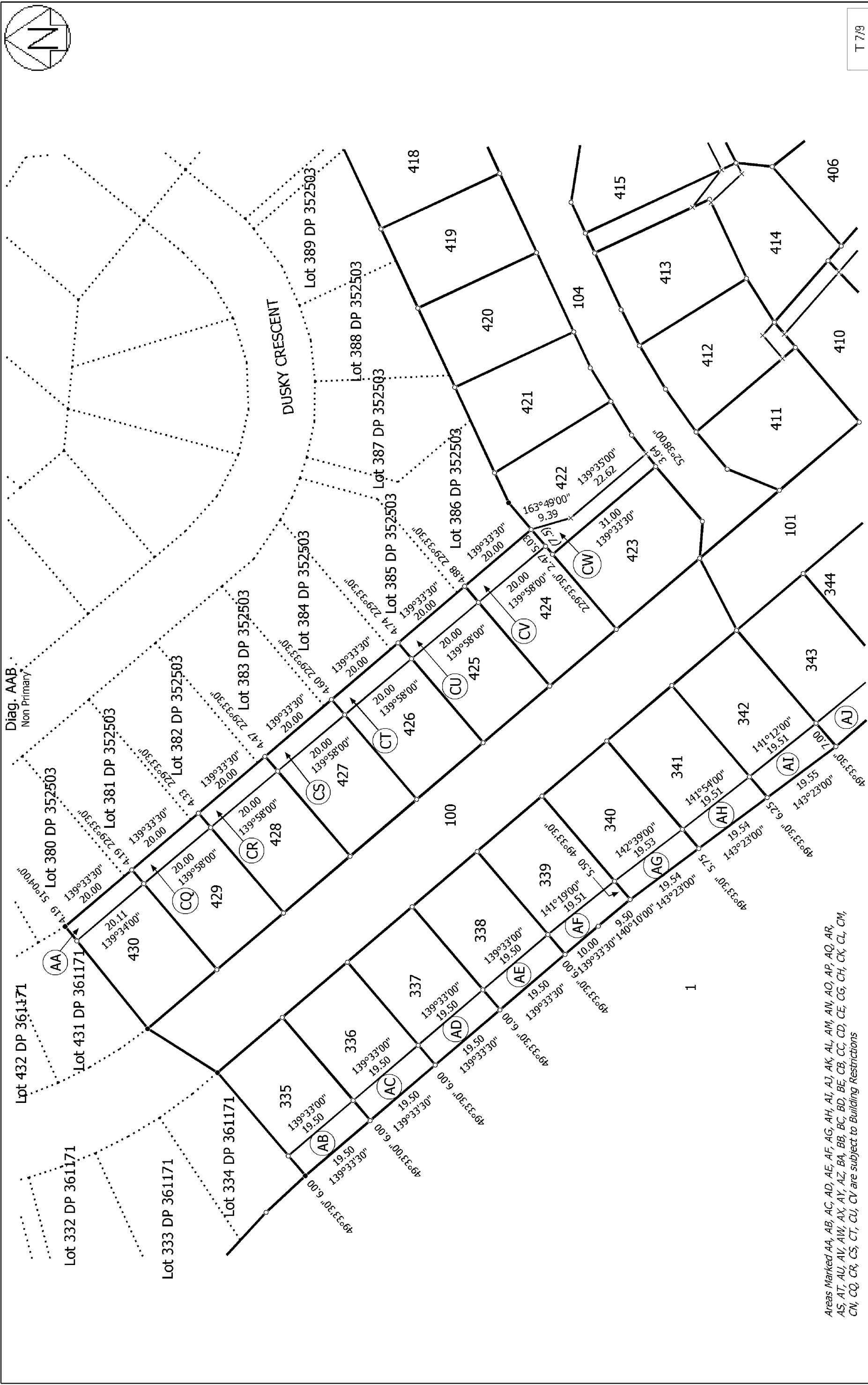
Land District: Wellington	Lots 1, 100-104, 251-264, 277, 335-349, 395-430, 453, 611 & 612 BEING A SUBDIVISION OF LOT 1 DP 361171	Surveyor: Stefan Imre Kiss Firm: Harrison Grierson Consultants Limited Survey Date: 21/03/2006	Digital Survey Plan DP 366936 Deposited on: 14/07/2006
Digitally Generated Plan Generated on: 08/08/2006 4:53pm Page 44 of 48			



1
97.0896Ha

T 6/9

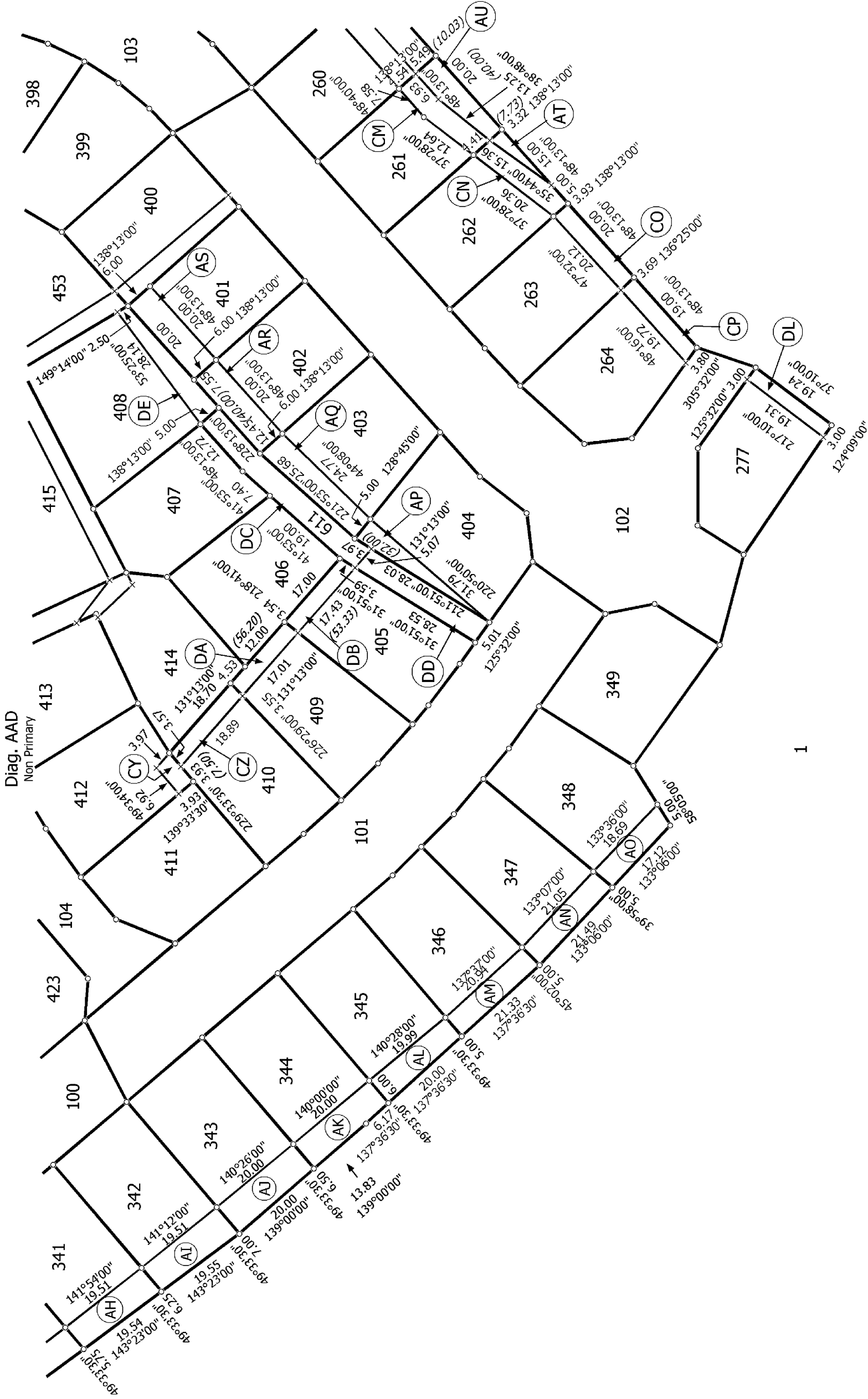
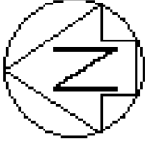
Land District: Wellington	Lots 1, 100-104, 251-264, 277, 335-349, 395-430, 453, 611 & 612 BEING A SUBDIVISION OF LOT 1 DP 361171		Surveyor: Stefan Imre Kiss Firm: Harrison Grierson Consultants Limited Survey Date: 21/03/2006	Digital Survey Plan DP 366936 Deposited on: 14/07/2006
Digitally Generated Plan Generated on: 08/08/2006 4:53pm Page 45 of 48				



Areas Marked AA, AB, AC, AD, AE, AF, AG, AH, AI, AJ, AK, AL, AM, AN, AO, AP, AQ, AR, AS, AT, AU, AV, AW, AX, AY, AZ, BA, BB, BC, BD, BE, BF, BG, BH, BI, BJ, BK, BL, BM, BN, BO, BP, BQ, BR, BS, BT, BU, BV, BW, BX, BY, BZ, CA, CB, CC, CD, CE, CF, CG, CH, CI, CJ, CK, CL, CM, CN, CO, CP, CQ, CR, CS, CT, CU, CV are subject to Building Restrictions

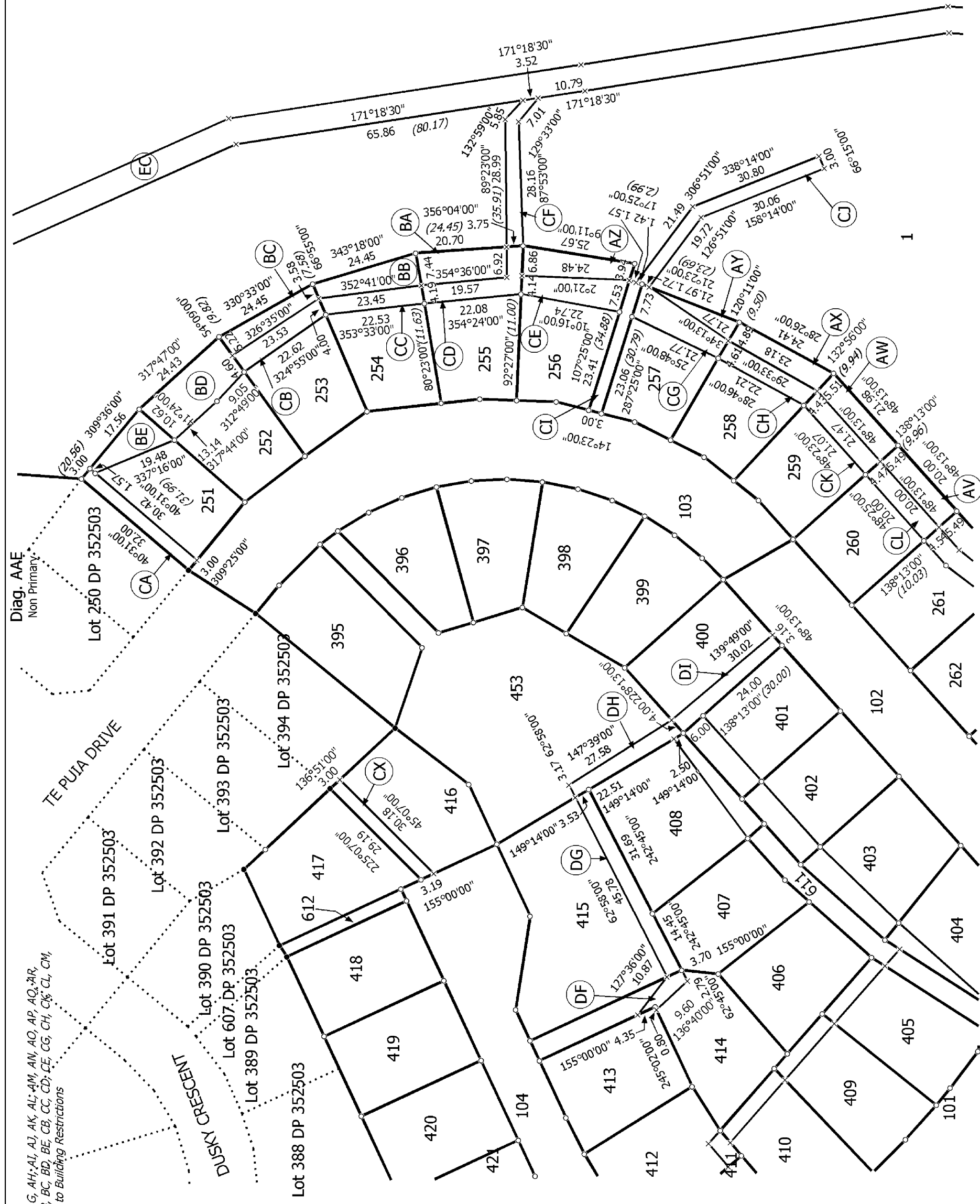
T 7/9

Land District: Wellington	Lots 1, 100-104, 251-264, 277, 335-349, 395-430, 453, 611 & 612 BEING A SUBDIVISION OF LOT 1 DP 361171	Surveyor: Stefan Imre Kiss Firm: Harrison Grierson Consultants Limited Survey Date: 21/03/2006	Digital Survey Plan DP 366936 Deposited on: 14/07/2006
Digitally Generated Plan Generated on: 08/08/2006 4:53pm Page 46 of 48			



Areas Marked AA, AB, AC, AD, AE, AF, AG, AH, AI, AJ, AK, AL, AM, AN, AO, AP, AQ, AR, AS, AT, AU, AV, AW, AX, AY, AZ, BA, BB, BC, BD, BE, BF, BG, BH, BI, BJ, BK, BL, BM, BN, BO, BP, BQ, BR, BS, BT, BU, BV, BW, BX, BY, BZ, CA, CB, CC, CD, CE, CF, CG, CH, CI, CJ, CK, CL, CM, CN, CO, CP, CQ, CR, CS, CT, CU, CV are subject to Building Restrictions

Land District: Wellington	Lots 1, 100-104, 251-264, 277, 335-349, 395-430, 453, 611 & 612 BEING A SUBDIVISION OF LOT 1 DP 361171	Surveyor: Stefan Imre Kiss Firm: Harrison Grierson Consultants Limited Survey Date: 21/03/2006	Digital Survey Plan DP 366936 Deposited on: 14/07/2006
Digitally Generated Plan Generated on: 08/08/2006 4:53pm Page 47 of 48			



**Lots 1, 100-104, 251-264, 277, 335-349, 395-430, 453, 611 & 612 BEING A
SUBDIVISION OF LOT 1 DP 361171**

Digitally Generated Plan
Generated on: 08/08/2006 4:53pm Page 48 of 48

Surveyor: Stefan Imre Kiss
Firm: Harrison Grierson Consultants Limited
Survey Date: 21/03/2006

Deposited on: 14/07/2006