

Subject to Part IVa of the Conservation Act 1987
 Subject to Section 11 Crown Minerals Act 1991

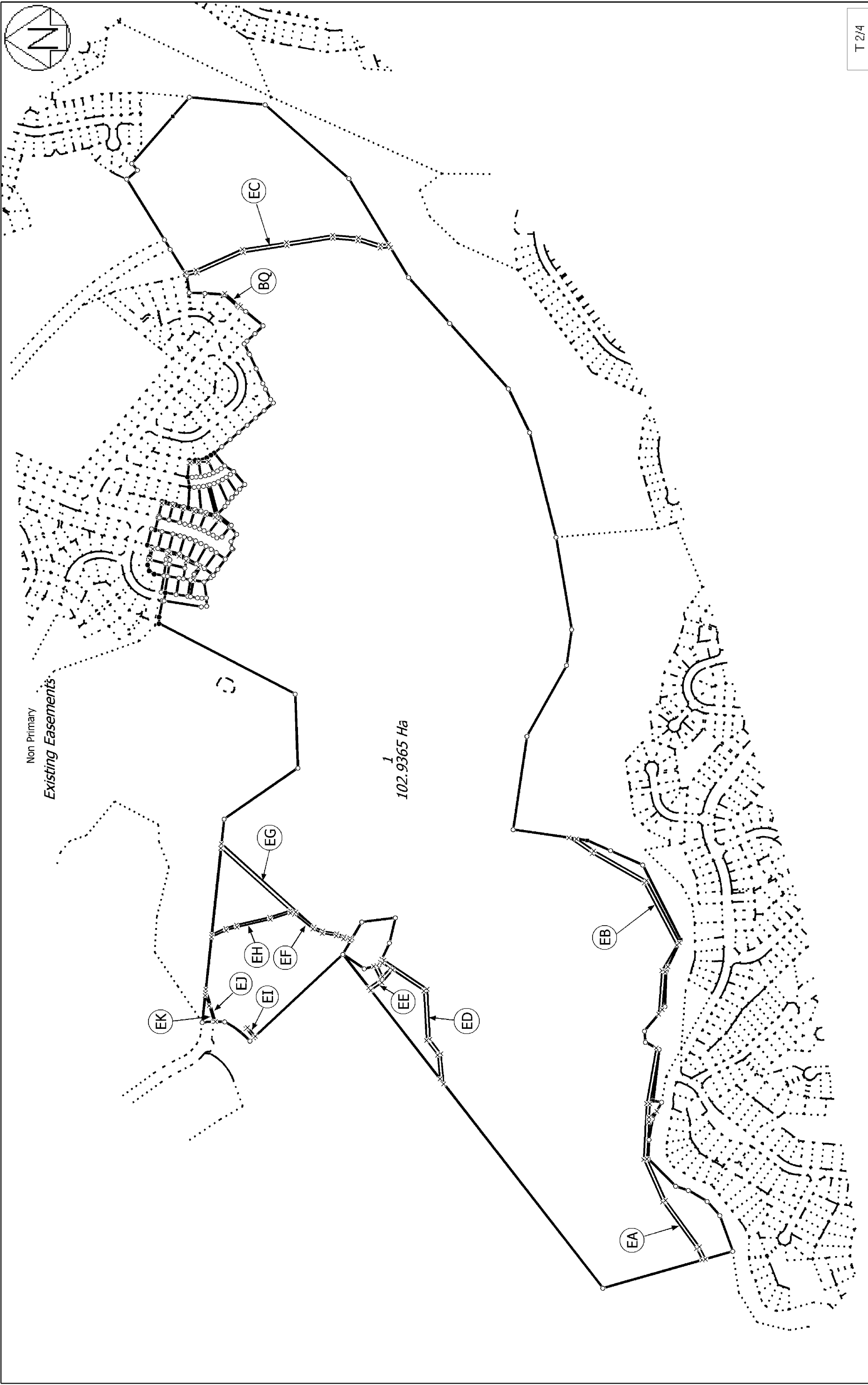
T 1/4

Digital Survey Plan
DP 361171
 Deposited on: 19/04/2006

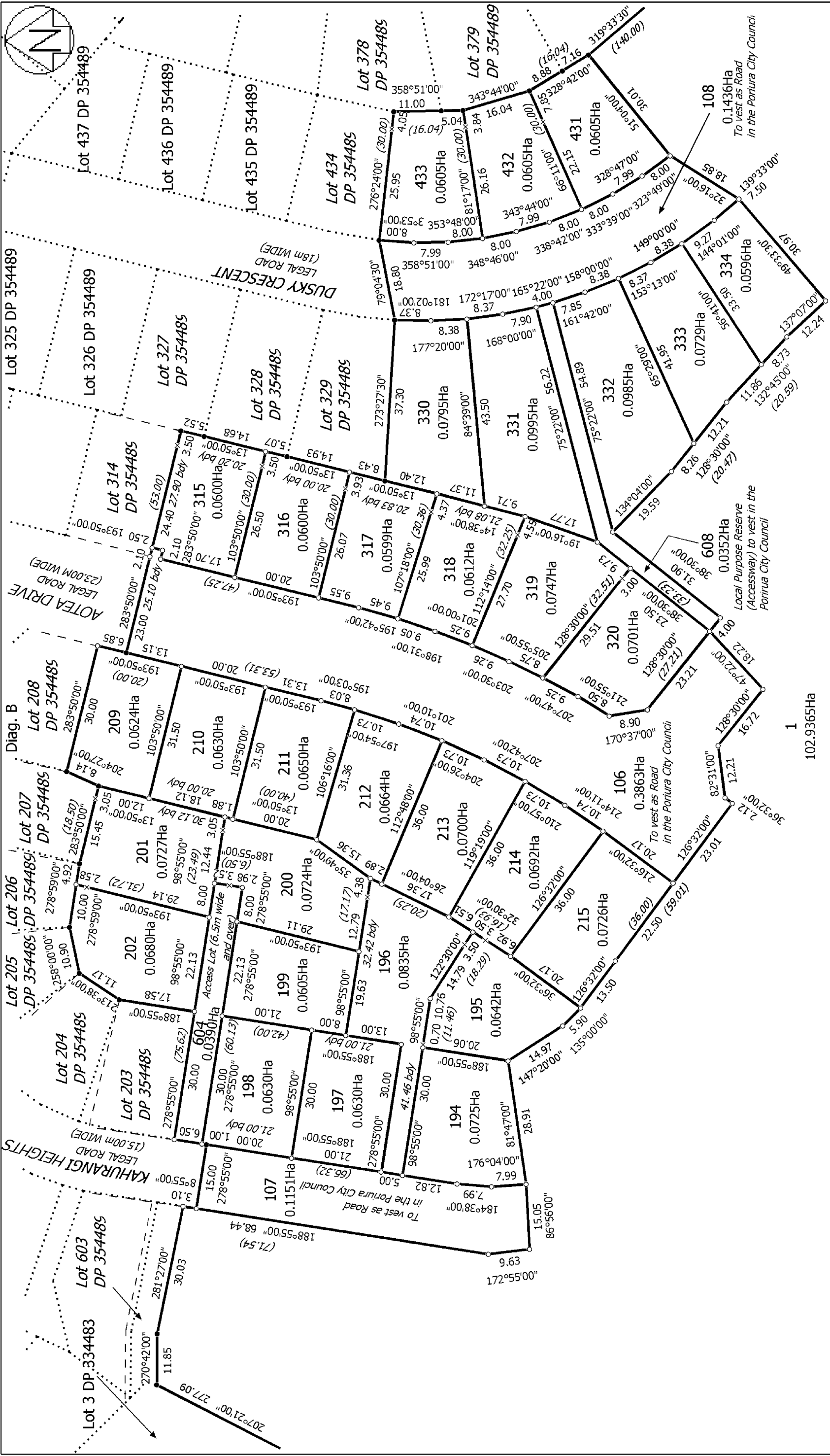
Surveyor: Stefan Imre Kiss
 Firm: Harrison Grierson Consultants Limited
 Survey Date: 12/12/2005

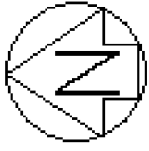
Lots 1, 106-108, 194-202, 209-215, 315-320, 330-334, 431-433, 604 & 608 being
a subdivision of Lot 1 DP 354489

Land District: Wellington
 Digitally Generated Plan
 Generated on: 10/05/2006 10:00am Page 27 of 30

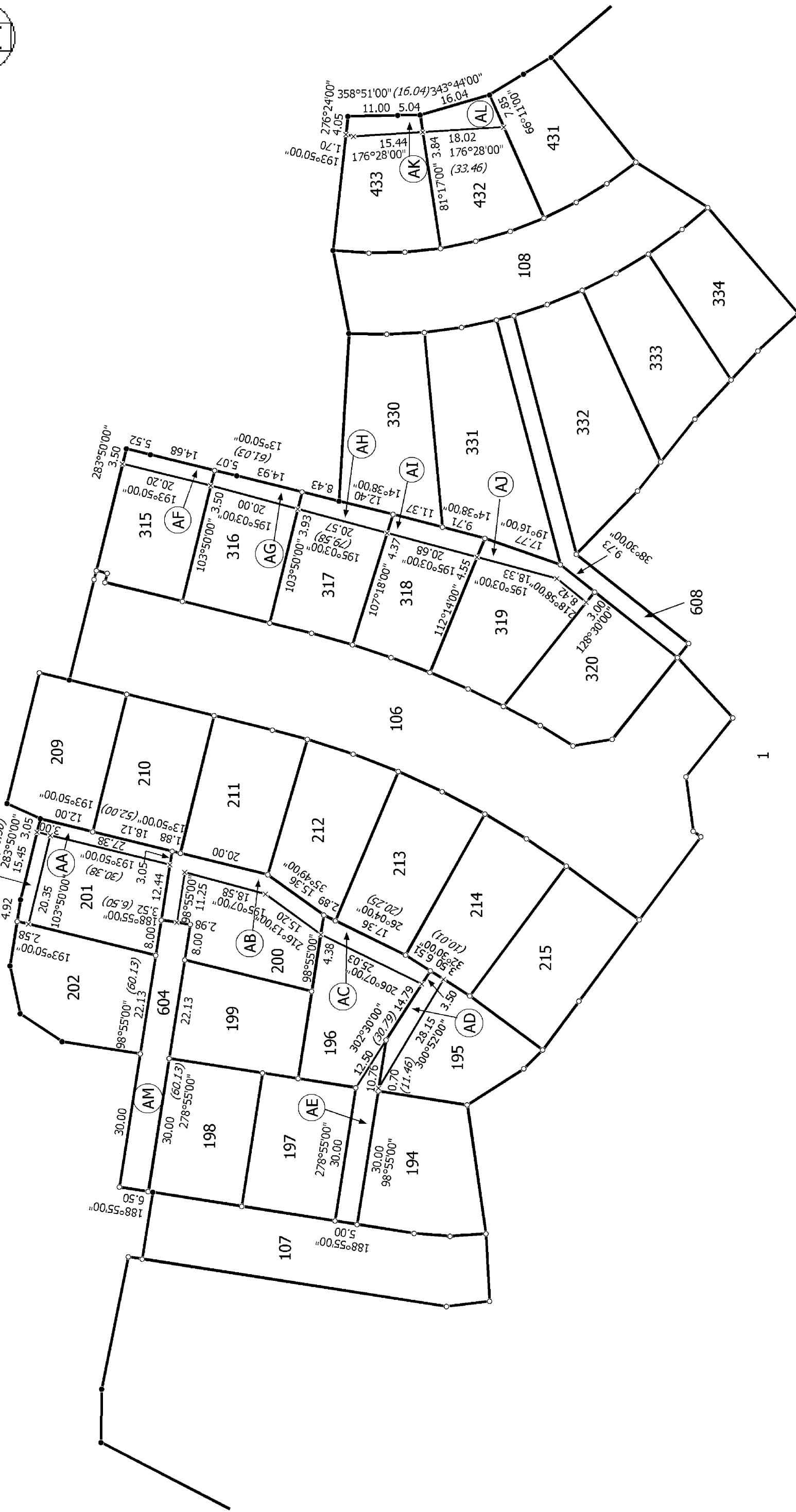


<p>Land District: Wellington</p> <p>Digitally Generated Plan</p> <p>Generated on: 10/05/2006 10:00am Page 28 of 30</p>	<p>Lots 1, 106-108, 194-202, 209-215, 315-320, 330-334, 431-433, 604 & 608 being a subdivision of Lot 1 DP 354489</p>	<p>Surveyor: Stefan Imre Kiss Firm: Harrison Grierson Consultants Limited Survey Date: 12/12/2005</p>	<p>Digital Survey Plan DP 361171 Deposited on: 19/04/2006</p>
--	---	---	---





Diag. A
Non Primary



T 4/4

Land District: Wellington
 Digitally Generated Plan
 Generated on: 10/05/2006 10:00am Page 30 of 30

Lots 1, 106-108, 194-202, 209-215, 315-320, 330-334, 431-433, 604 & 608 being
 a subdivision of Lot 1 DP 354489

Surveyor: Stefan Imre Kiss
 Firm: Harrison Grierson Consultants Limited
 Survey Date: 12/12/2005

Digital Survey Plan
 DP 361171
 Deposited on: 19/04/2006

Digital Survey Plan - DP 361171

Survey Number DP 361171
Surveyor Reference 1850-000632-01
Surveyor Stefan Imre Kiss
Survey Firm Harrison Grierson Consultants Limited (Wellington)
Surveyor Declaration I Stefan Imre Kiss, being a person entitled to practise as a licensed cadastral surveyor, certify that -
 (a) The surveys to which this dataset relates are accurate, and were undertaken by me or under my direction in accordance with the Cadastral Survey Act 2002 and the Surveyor-General's Rules for Cadastral Survey 2002/2;
 (b) This dataset is accurate, and has been created in accordance with that Act and those Rules.
 Declared on 13/03/2006.

Survey Details

Dataset Description Lots 1, 106-108, 194-202, 209-215, 315-320, 330-334, 431-433, 604 & 608 being a subdivision of Lot 1 DP 354489
Purpose LT Subdivision
Status Deposited **Type** Survey
Land District Wellington **Survey Class** Class I Cadastral Survey
Coordinate System Wellington 2000

Survey Dates

Surveyed Date 12/12/2005 **Certified Date** 13/03/2006
Submitted Date 13/03/2006 15:20:35 **Survey Approval Date** 14/03/2006
Deposit Date 19/04/2006

Referenced Surveys

Survey Number	Land District	Bearing Correction
DP 354489	Wellington	0°00'00"
DP 57045	Wellington	0°00'00"
DP 75975	Wellington	0°00'00"
DP 85351	Wellington	0°00'00"
DP 334483	Wellington	0°00'00"
DP 335942	Wellington	0°00'00"
DP 352503	Wellington	0°00'00"

Territorial Authorities

Porirua City

Comprised In

CT 222519

Created Parcels

Parcels	Parcel Intent	Area	CT Reference
Part Section 286 Porirua District	Fee Simple Title	0.5419 ha	
Easement AM Deposited Plan 361171	Easement		
Lot 1 Deposited Plan 361171	Fee Simple Title	102.9365 ha	248537

Digital Survey Plan - DP 361171

Created Parcels

Parcels	Parcel Intent	Area	CT Reference
Lot 106 Deposited Plan 361171	Vesting on Deposit for Road	0.3863 ha	
Lot 107 Deposited Plan 361171	Vesting on Deposit for Road	0.1151 ha	
Lot 108 Deposited Plan 361171	Vesting on Deposit for Road	0.1436 ha	
Lot 194 Deposited Plan 361171	Fee Simple Title	0.0725 ha	248541
Lot 195 Deposited Plan 361171	Fee Simple Title	0.0642 ha	248542
Lot 196 Deposited Plan 361171	Fee Simple Title	0.0835 ha	248543
Lot 197 Deposited Plan 361171	Fee Simple Title	0.0630 ha	248544
Lot 198 Deposited Plan 361171	Fee Simple Title	0.0630 ha	248545
Lot 199 Deposited Plan 361171	Fee Simple Title	0.0605 ha	248546
Lot 200 Deposited Plan 361171	Fee Simple Title	0.0724 ha	248547
Lot 201 Deposited Plan 361171	Fee Simple Title	0.0727 ha	248548
Lot 202 Deposited Plan 361171	Fee Simple Title	0.0680 ha	248549
Lot 209 Deposited Plan 361171	Fee Simple Title	0.0624 ha	248550
Lot 210 Deposited Plan 361171	Fee Simple Title	0.0630 ha	248551
Lot 211 Deposited Plan 361171	Fee Simple Title	0.0650 ha	248552
Lot 212 Deposited Plan 361171	Fee Simple Title	0.0664 ha	248553
Lot 213 Deposited Plan 361171	Fee Simple Title	0.0700 ha	248554
Lot 214 Deposited Plan 361171	Fee Simple Title	0.0692 ha	248555
Lot 215 Deposited Plan 361171	Fee Simple Title	0.0726 ha	248556
Lot 315 Deposited Plan 361171	Fee Simple Title	0.0600 ha	248557
Lot 316 Deposited Plan 361171	Fee Simple Title	0.0600 ha	248558
Lot 317 Deposited Plan 361171	Fee Simple Title	0.0599 ha	248559
Lot 318 Deposited Plan 361171	Fee Simple Title	0.0612 ha	248560
Lot 319 Deposited Plan 361171	Fee Simple Title	0.0747 ha	248561
Lot 320 Deposited Plan 361171	Fee Simple Title	0.0701 ha	248562
Lot 330 Deposited Plan 361171	Fee Simple Title	0.0795 ha	248563
Lot 331 Deposited Plan 361171	Fee Simple Title	0.0995 ha	248564
Lot 332 Deposited Plan 361171	Fee Simple Title	0.0985 ha	248565
Lot 333 Deposited Plan 361171	Fee Simple Title	0.0729 ha	248566
Lot 334 Deposited Plan 361171	Fee Simple Title	0.0596 ha	248567
Lot 433 Deposited Plan 361171	Fee Simple Title	0.0605 ha	248568
Lot 432 Deposited Plan 361171	Fee Simple Title	0.0605 ha	248569
Lot 431 Deposited Plan 361171	Fee Simple Title	0.0605 ha	248570
Lot 604 Deposited Plan 361171	Fee Simple Title	0.0390 ha	Multiple
Lot 608 Deposited Plan 361171	Vesting on Deposit for Local Purpose Reserve	0.0352 ha	248572
Easement AA Deposited Plan 361171	Easement		
Easement AB Deposited Plan 361171	Easement		
Easement AC Deposited Plan 361171	Easement		
Easement AD Deposited Plan 361171	Easement		
Easement AE Deposited Plan 361171	Easement		
Easement AF Deposited Plan 361171	Easement		

Digital Survey Plan - DP 361171

Created Parcels

Parcels	Parcel Intent	Area	CT Reference
Easement AG Deposited Plan 361171	Easement		
Easement AH Deposited Plan 361171	Easement		
Easement AI Deposited Plan 361171	Easement		
Easement AJ Deposited Plan 361171	Easement		
Easement AK Deposited Plan 361171	Easement		
Easement AL Deposited Plan 361171	Easement		
Easement EG Deposited Plan 361171	Easement		
Easement EH Deposited Plan 361171	Easement		
Easement EF Deposited Plan 361171	Easement		
Easement EE Deposited Plan 361171	Easement		
Easement ED Deposited Plan 361171	Easement		
Easement EA Deposited Plan 361171	Easement		
Easement EB Deposited Plan 361171	Easement		
Easement EC Deposited Plan 361171	Easement		
Easement EK Deposited Plan 361171	Easement		
Easement EJ Deposited Plan 361171	Easement		
Easement EI Deposited Plan 361171	Easement		
Easement AN Deposited Plan 361171	Easement		
Easement BQ Deposited Plan 361171	Easement		
Total Area		106.2634 ha	

Memorandum of Easements in Gross (Pursuant to s243 Resource Management Act 1991)			
Purpose	Shown	Servient Tenement	Grantee
Right to drain Sewage and Stormwater	AA	Lot 201 hereon	Porirua City Council
	AB	Lot 200 hereon	
	AC	Lot 196 hereon	
	AD	Lot 195 hereon	
	AE	Lot 196 hereon	
	AF	Lot 315 hereon	
	AG	Lot 316 hereon	
	AH	Lot 317 hereon	
	AI	Lot 318 hereon	
	AJ	Lot 319 hereon	
	AK	Lot 433 hereon	
	AL	Lot 432 hereon	
	AM	Lot 604 hereon	

Memorandum of Easements (Pursuant to s243 Resource Management Act 1991)			
Purpose	Shown	Servient Tenement	Dominant Tenement
Right to drain Sewage and Stormwater	AN	Lot 201 hereon	Lot 202 hereon
Right of Way	AE	Lot 196 hereon	Lot 195 hereon
	AM	Lot 604 hereon	Lots 199-202 hereon
Right to convey Water, Electricity, Gas, Telecommunications, Computer media	AE	Lot 196 hereon	Lot 195 hereon
	AM	Lot 604 hereon	Lots 199-202 hereon

Schedule of Easements/ Interests in Gross to Remain with Land (Pursuant to s239(2) of the Resource Management Act 1991)				
Purpose/Interest	Servient Tenement	Shown	Created By	Grantee
Right to Convey Water	Lot 1 Hereon	ED, EE	B.686066.3	Porirua City Council
		EG	B.557646.1	Wellington Regional Council
	Lot 1 Hereon	EF	T.861524.2	
Right to drain Sewage	Lot 1 Hereon	EA, EB, EC	B.686066.3	Porirua City Council
Right to drain Stormwater	Lot 1 Hereon	EI	B.686066.3	Porirua City Council
Right of Way	Lot 1 Hereon	EF, EH, EK	T.861524.1	Porirua City Council
Right to drain Sewage and stormwater	Lot 1 Hereon	BQ	EI.6591753.6	Porirua City Council

Schedule of Easements to Remain with Land (Pursuant to s239(2) of the Resource Management Act 1991)			
Purpose/Interest	Servient Tenement	Shown	Created By
Right to convey electricity	Lot 1 hereon	EJ	B.604095.2

Schedule of Easements to be relinquished (Pursuant to s239(2) of the Resource Management Act 1991)			
Purpose/Interest	Servient Tenement	Shown	Created By
Right to drain sewage and stormwater	Lots 604, 200 and 201 hereon	AK on DP 354489	EI.6754542.7