



Title Plan - DP 456154

Survey Number DP 456154
Surveyor Reference 27510 Carrus Stage 10
Surveyor Kristopher Dean Gough
Survey Firm Cuttriss Consultants Ltd (Lower Hutt)
Surveyor Declaration I Kristopher Dean Gough, being a licensed cadastral surveyor, certify that:
(a) this dataset provided by me and its related survey are accurate, correct and in accordance with the Cadastral Survey Act 2002 and the Rules for Cadastral Survey 2010, and
(b) the survey was undertaken by me or under my personal direction.
Declared on 26 Mar 2013 04:36 PM

Survey Details

Dataset Description Lots 255 - 257, 304 & 797 - 834 being a subdivision of Sections 1 - 3 SO 23915, Pt Sec 1 SO 36182, Lot 3 DP 328361 and Lot 253 DP 434377

Status Deposited

Land District Wellington **Survey Class** Class A

Submitted Date 26/03/2013 **Survey Approval Date** 15/04/2013

Deposit Date 26/03/2013

Territorial Authorities

Porirua City

Comprised In

CT 529958
CT WN47D/891
CT 252958
CT WN51D/517
CT WN51D/518
CT WN51D/519

Created Parcels

Parcels	Parcel Intent	Area	CT Reference
Area H Deposited Plan 456154	Easement		
Area J Deposited Plan 456154	Easement		
Area K Deposited Plan 456154	Easement		
Area L Deposited Plan 456154	Easement		
Area N Deposited Plan 456154	Easement		
Area P Deposited Plan 456154	Easement		
Area U Deposited Plan 456154	Easement		
Area F Deposited Plan 456154	Easement		
Lot 797 Deposited Plan 456154	Fee Simple Title	0.1343 Ha	588710
Lot 798 Deposited Plan 456154	Fee Simple Title	0.0638 Ha	588711



Title Plan - DP 456154

Created Parcels

Parcels	Parcel Intent	Area	CT Reference
Lot 799 Deposited Plan 456154	Fee Simple Title	0.0671 Ha	588712
Lot 800 Deposited Plan 456154	Fee Simple Title	0.0704 Ha	588713
Lot 801 Deposited Plan 456154	Fee Simple Title	0.0736 Ha	588714
Lot 802 Deposited Plan 456154	Fee Simple Title	0.0769 Ha	588715
Lot 803 Deposited Plan 456154	Fee Simple Title	0.0868 Ha	588716
Lot 804 Deposited Plan 456154	Fee Simple Title	0.0850 Ha	588717
Lot 805 Deposited Plan 456154	Fee Simple Title	0.1026 Ha	588718
Lot 806 Deposited Plan 456154	Fee Simple Title	0.1288 Ha	588719
Lot 807 Deposited Plan 456154	Fee Simple Title	0.1437 Ha	588720
Lot 808 Deposited Plan 456154	Fee Simple Title	0.1146 Ha	588721
Lot 809 Deposited Plan 456154	Fee Simple Title	0.0810 Ha	588722
Lot 810 Deposited Plan 456154	Fee Simple Title	0.0819 Ha	588723
Lot 811 Deposited Plan 456154	Fee Simple Title	0.0838 Ha	588724
Lot 812 Deposited Plan 456154	Fee Simple Title	0.0744 Ha	588725
Lot 813 Deposited Plan 456154	Fee Simple Title	0.0740 Ha	588726
Lot 814 Deposited Plan 456154	Fee Simple Title	0.0740 Ha	588727
Lot 815 Deposited Plan 456154	Fee Simple Title	0.0740 Ha	588728
Lot 816 Deposited Plan 456154	Fee Simple Title	0.0742 Ha	588729
Lot 817 Deposited Plan 456154	Fee Simple Title	0.0705 Ha	588730
Lot 818 Deposited Plan 456154	Fee Simple Title	0.0651 Ha	588731
Lot 819 Deposited Plan 456154	Fee Simple Title	0.0624 Ha	588732
Lot 820 Deposited Plan 456154	Fee Simple Title	0.0624 Ha	588733
Lot 821 Deposited Plan 456154	Fee Simple Title	0.0624 Ha	588734
Lot 822 Deposited Plan 456154	Fee Simple Title	0.0624 Ha	588735
Lot 823 Deposited Plan 456154	Fee Simple Title	0.0624 Ha	588736
Lot 824 Deposited Plan 456154	Fee Simple Title	0.0624 Ha	588737
Lot 825 Deposited Plan 456154	Fee Simple Title	0.0624 Ha	588738
Lot 826 Deposited Plan 456154	Fee Simple Title	0.0624 Ha	588739
Lot 827 Deposited Plan 456154	Fee Simple Title	0.0616 Ha	588740
Lot 828 Deposited Plan 456154	Fee Simple Title	0.0619 Ha	588741
Lot 829 Deposited Plan 456154	Fee Simple Title	0.0683 Ha	588742
Lot 830 Deposited Plan 456154	Fee Simple Title	0.0644 Ha	588743
Lot 831 Deposited Plan 456154	Fee Simple Title	0.0702 Ha	588744
Lot 832 Deposited Plan 456154	Fee Simple Title	0.0700 Ha	588745
Lot 833 Deposited Plan 456154	Fee Simple Title	0.0644 Ha	588746
Lot 834 Deposited Plan 456154	Fee Simple Title	0.0688 Ha	588747
Area G Deposited Plan 456154	Easement		
Area R Deposited Plan 456154	Easement		
Area O Deposited Plan 456154	Easement		



Title Plan - DP 456154

Created Parcels

Parcels	Parcel Intent	Area	CT Reference
Area Q Deposited Plan 456154	Easement		
Area W Deposited Plan 456154	Easement		
Area X Deposited Plan 456154	Easement		
Area S Deposited Plan 456154	Easement		
Area DA Deposited Plan 456154	Easement		
Area CB Deposited Plan 456154	Easement		
Area BQ Deposited Plan 456154	Easement		
Area AT Deposited Plan 456154	Easement		
Area BO Deposited Plan 456154	Easement		
Area AY Deposited Plan 456154	Easement		
Area KA Deposited Plan 456154	Easement		
Area AZ Deposited Plan 456154	Easement		
Area KB Deposited Plan 456154	Easement		
Area AR Deposited Plan 456154	Easement		
Area AP Deposited Plan 456154	Easement		
Area T Deposited Plan 456154	Easement		
Area AO Deposited Plan 456154	Easement		
Area AN Deposited Plan 456154	Easement		
Area AM Deposited Plan 456154	Easement		
Area AL Deposited Plan 456154	Easement		
Area M Deposited Plan 456154	Easement		
Area ZA Deposited Plan 456154	Land Covenant		
Area ZB Deposited Plan 456154	Land Covenant		
Area ZC Deposited Plan 456154	Land Covenant		
Area ZD Deposited Plan 456154	Land Covenant		
Area ZE Deposited Plan 456154	Land Covenant		
Area ZF Deposited Plan 456154	Land Covenant		
Area ZG Deposited Plan 456154	Land Covenant		
Area YO Deposited Plan 456154	Land Covenant		
Area YN Deposited Plan 456154	Land Covenant		
Area ZH Deposited Plan 456154	Land Covenant		
Area ZI Deposited Plan 456154	Land Covenant		
Area ZJ Deposited Plan 456154	Land Covenant		
Area ZK Deposited Plan 456154	Land Covenant		
Area ZL Deposited Plan 456154	Land Covenant		
Area ZM Deposited Plan 456154	Land Covenant		
Area ZN Deposited Plan 456154	Land Covenant		
Area ZO Deposited Plan 456154	Land Covenant		
Area ZP Deposited Plan 456154	Land Covenant		



Title Plan - DP 456154

Created Parcels

Parcels	Parcel Intent	Area	CT Reference
Area ZQ Deposited Plan 456154	Land Covenant		
Area ZR Deposited Plan 456154	Land Covenant		
Area ZS Deposited Plan 456154	Land Covenant		
Area ZT Deposited Plan 456154	Land Covenant		
Area ZU Deposited Plan 456154	Land Covenant		
Area ZV Deposited Plan 456154	Land Covenant		
Area ZW Deposited Plan 456154	Land Covenant		
Area ZX Deposited Plan 456154	Land Covenant		
Area A Deposited Plan 456154	Easement		
Area B Deposited Plan 456154	Easement		
Area C Deposited Plan 456154	Easement		
Area D Deposited Plan 456154	Easement		
Area E Deposited Plan 456154	Easement		
Area ZY Deposited Plan 456154	Land Covenant		
Area ZZ Deposited Plan 456154	Land Covenant		
Area YA Deposited Plan 456154	Land Covenant		
Area YB Deposited Plan 456154	Land Covenant		
Area YC Deposited Plan 456154	Land Covenant		
Area YD Deposited Plan 456154	Land Covenant		
Area YE Deposited Plan 456154	Land Covenant		
Area YF Deposited Plan 456154	Land Covenant		
Area YG Deposited Plan 456154	Land Covenant		
Area YH Deposited Plan 456154	Land Covenant		
Area PA Deposited Plan 456154	Land Covenant		
Area PB Deposited Plan 456154	Land Covenant		
Area YI Deposited Plan 456154	Land Covenant		
Area YJ Deposited Plan 456154	Land Covenant		
Area YK Deposited Plan 456154	Land Covenant		
Area YL Deposited Plan 456154	Land Covenant		
Area YM Deposited Plan 456154	Land Covenant		
Area PC Deposited Plan 456154	Land Covenant		
Area PD Deposited Plan 456154	Land Covenant		
Area PE Deposited Plan 456154	Land Covenant		
Area PF Deposited Plan 456154	Land Covenant		
Area PG Deposited Plan 456154	Land Covenant		
Area PH Deposited Plan 456154	Land Covenant		
Area PJ Deposited Plan 456154	Land Covenant		
Lot 256 Deposited Plan 456154	Fee Simple Title	2.5798 Ha	588708
Lot 255 Deposited Plan 456154	Fee Simple Title	62.2666 Ha	588707



Title Plan - DP 456154

Created Parcels

Parcels	Parcel Intent	Area	CT Reference
	Road	1.1816 Ha	
	Hydro		
Part Aotea 1 Block	Fee Simple Title		
Lot 257 Deposited Plan 456154	Fee Simple Title	2.2913 Ha	588709
Total Area		<u>71.2486 Ha</u>	

Plan Number	DP 456154
--------------------	-----------

Memorandum of Easements (in Gross) (Pursuant to s243 Resource Management Act 1991)			
Purpose	Shown	Servient Tenement	Grantee
Right to drain water	A	Lot 804 hereon	Porirua City Council
	B	Lot 805 hereon	
	C	Lot 806 hereon	
	D	Lot 807 hereon	
	E	Lot 808 hereon	
	M	Lot 797 hereon	
Right to convey telecommunications and computer media	S, J, K, L, N, P, U, O, R, F	Lot 257 hereon	Chorus New Zealand Ltd
Right to convey electricity and telecommunications	F, G	Lot 257 hereon	Wellington Electricity Lines Limited

Areas A, B, C, D, E, M, ZA, ZB, ZC, ZD, ZE, ZF, ZG, ZH, ZI, ZJ, ZK, ZL, ZM, ZN, ZO, ZP, ZQ, ZR, ZS, ZT, ZU, ZV, ZW, ZX, ZY, ZZ, YA, YB, YC, YD, YE, YF, YG, YH, YI, YJ, YK, YL, YM, YN, YO, PA, PB are to be subject to consent notices.

Areas PC, PD, PE, PF, PG, PH, PJ are to be subject to private land covenants.

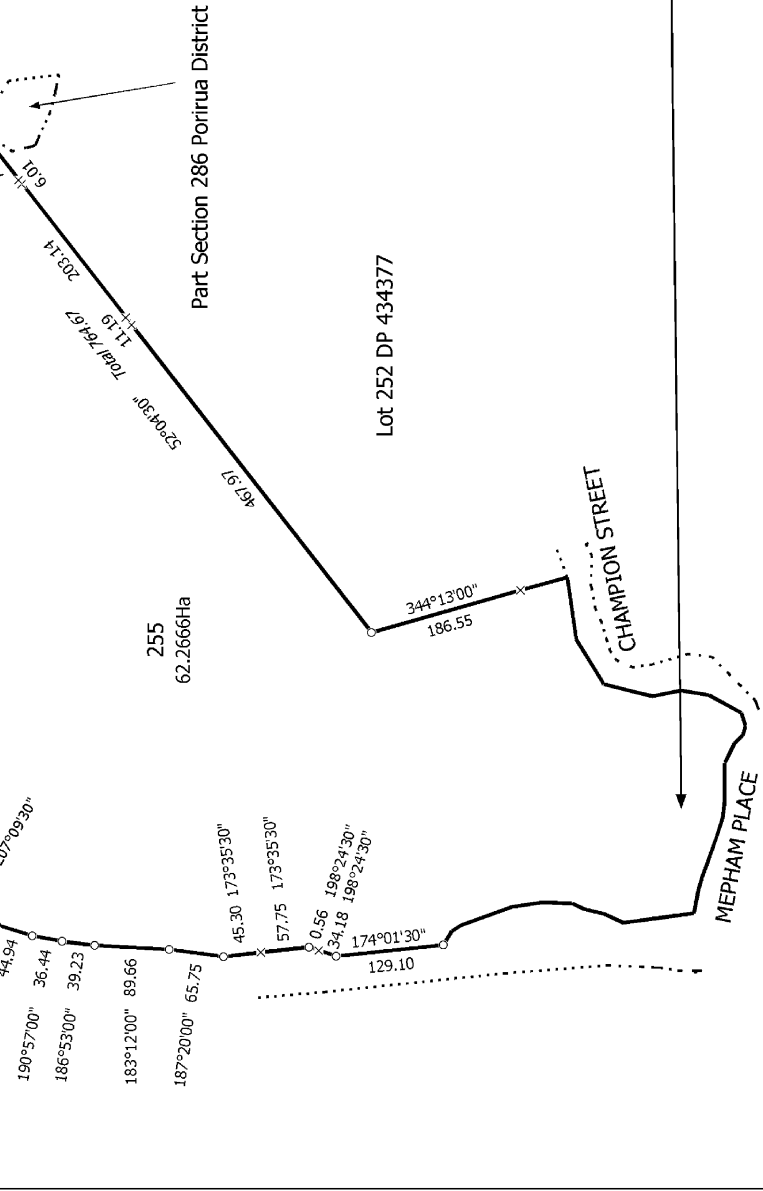
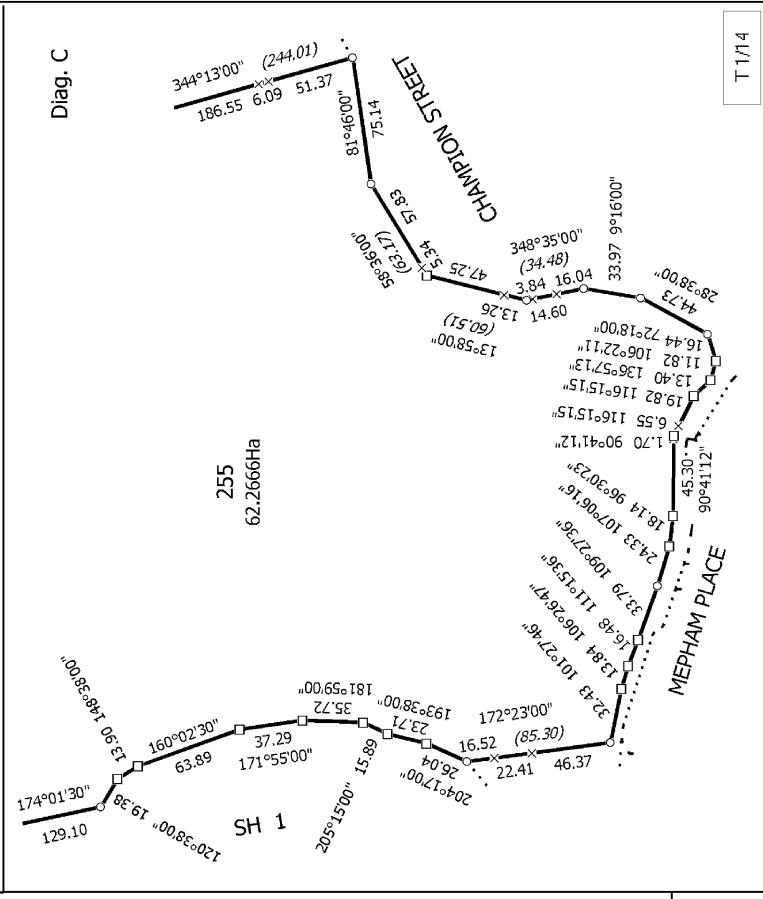
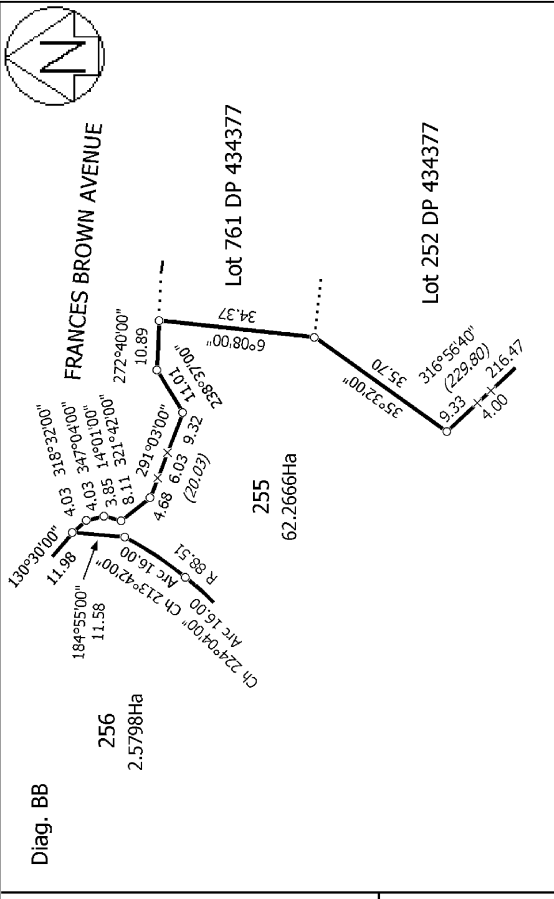
Memorandum of Easements (Pursuant to s243 Resource Management Act 1991)			
Purpose	Shown	Servient Tenement	Dominant Tenement
Right to drain water and sewage	H	Lot 257 hereon	Lot 803 hereon
	J	Lot 257 hereon	Lot 802 hereon
	K	Lot 257 hereon	Lot 801 hereon
	L	Lot 257 hereon	Lot 800 hereon
	N	Lot 257 hereon	Lot 799 hereon
	P	Lot 257 hereon	Lot 798 hereon
	U	Lot 257 hereon	Lot 797 hereon

Schedule of Existing Easements (in Gross)				
Purpose	Shown	Servient Tenement	Grantee	Specified in
Right to drain sewage	AL (AL on DP 434377)	Lot 255 hereon	Porirua City Council	T. B686066.3
	AM (AM on DP 434377)			
	AN (AN on DP 434377)			
Right to convey water	AN (AN on DP 434377)	Lot 255 hereon	Porirua City Council	T. B686066.3
	AO (AO on DP 434377)			
	AP (AP on DP 434377)			
	AR (AR on DP 434377)			
	AT (AT on DP 434377)	Lot 255 hereon	Porirua City Council	T. B612516.1
	T (T on DP 434377)			
	KA, KB (KA, KB on DP 434377)	Lot 255 hereon	Porirua City Council	EI. 8736497.33

Schedule of Existing Easements (in Gross)				
Purpose	Shown	Servient Tenement	Grantee	Specified in
Right to drain stormwater	AT (AT on DP 434377)	Lot 255 hereon	Porirua City Council	T. B686066.3
	BO (BO on DP 434377)			
	BQ (BQ on DP 434377)			
	CB (CB on DP 328361)	Lot 256 hereon		
Right to convey electricity	Q, O (Q on DP 434377)	Lot 257 hereon	Wellington Electricity Lines Limited	T. B353754.1
	R (R on DP 434377)			
Right to convey electricity and telecommunications	X (C on DP 424914)	Lot 257 hereon	Wellington Electricity Lines Limited	EI. 8454962.1
Right to convey electricity	W (B on DP 76419)	Lot 257 hereon	Wellington Electricity Lines Limited	T. B353754.1
	KA, AY, AZ (KA, AY, AZ on DP 434377)	Lot 255 hereon	Wellington Electricity Lines Limited	EI. 8736497.34
Right to drain water	DA (DA on DP 434377)	Lot 256 hereon	Porirua City Council	EI. 8736497.33

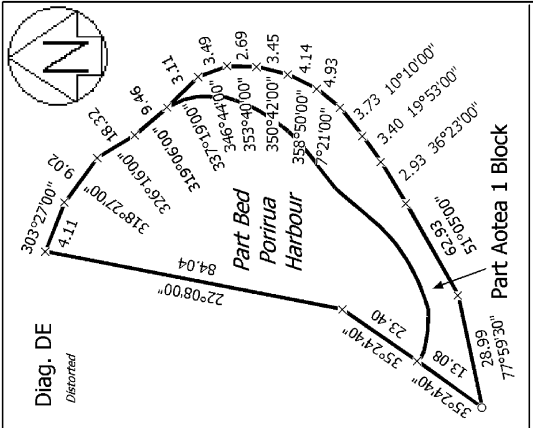
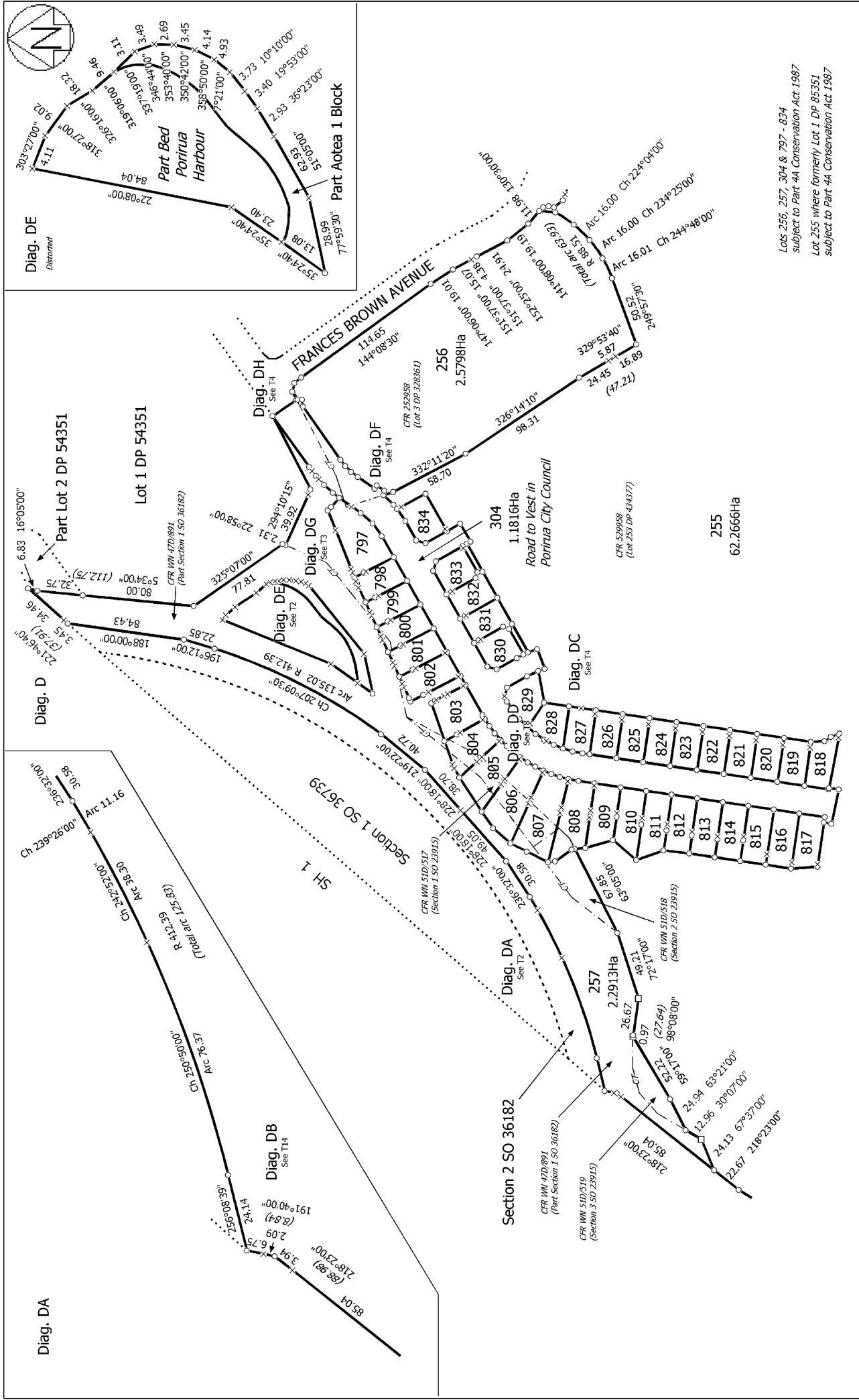
Existing Easements in Gross to be Surrendered				
Purpose	Shown	Servient Tenement	Grantee	Specified in
Right to drain stormwater	BR on DP 434377	Lot 253 DP 434377	Porirua City Council	T. B686066.3
	BP on DP 434377			
	BT on DP 434377			
	BU on DP 434377			
	BV on DP 434377			
	BW on DP 434377			
	BX on DP 434377			
	BY on DP 434377			
	BZ on DP 434377			
	R on DP 434377			
Right to drain stormwater	CA on DP 328361	Lot 3 DP 328361	Porirua City Council	T. B686066.3
Right to convey electricity	S on DP 434377	Lot 253 DP 434377	Wellington Electricity Lines Limited	T. B353754.1

Existing Easements in Gross to be Surrendered				
Purpose	Shown	Servient Tenement	Grantee	Specified in
Right to drain sewage	BT on DP 434377	Lot 253 DP 434377	Porirua City Council	T. B686066.3
	BU on DP 434377			
	BV on DP 434377			
	BW on DP 434377			
	BX on DP 434377			
	R on DP 434377			

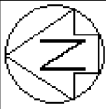


Land District: Wellington	Surveyor: Christopher Dean Gough	Title Plan DP 456154	Deposited on: 26/08/2013
Digitally Generated Plan Generated on: 23/04/2013 08:17 am Page 12 of 25	Firm: Cutriss Consultants Ltd (Lower Hut)		

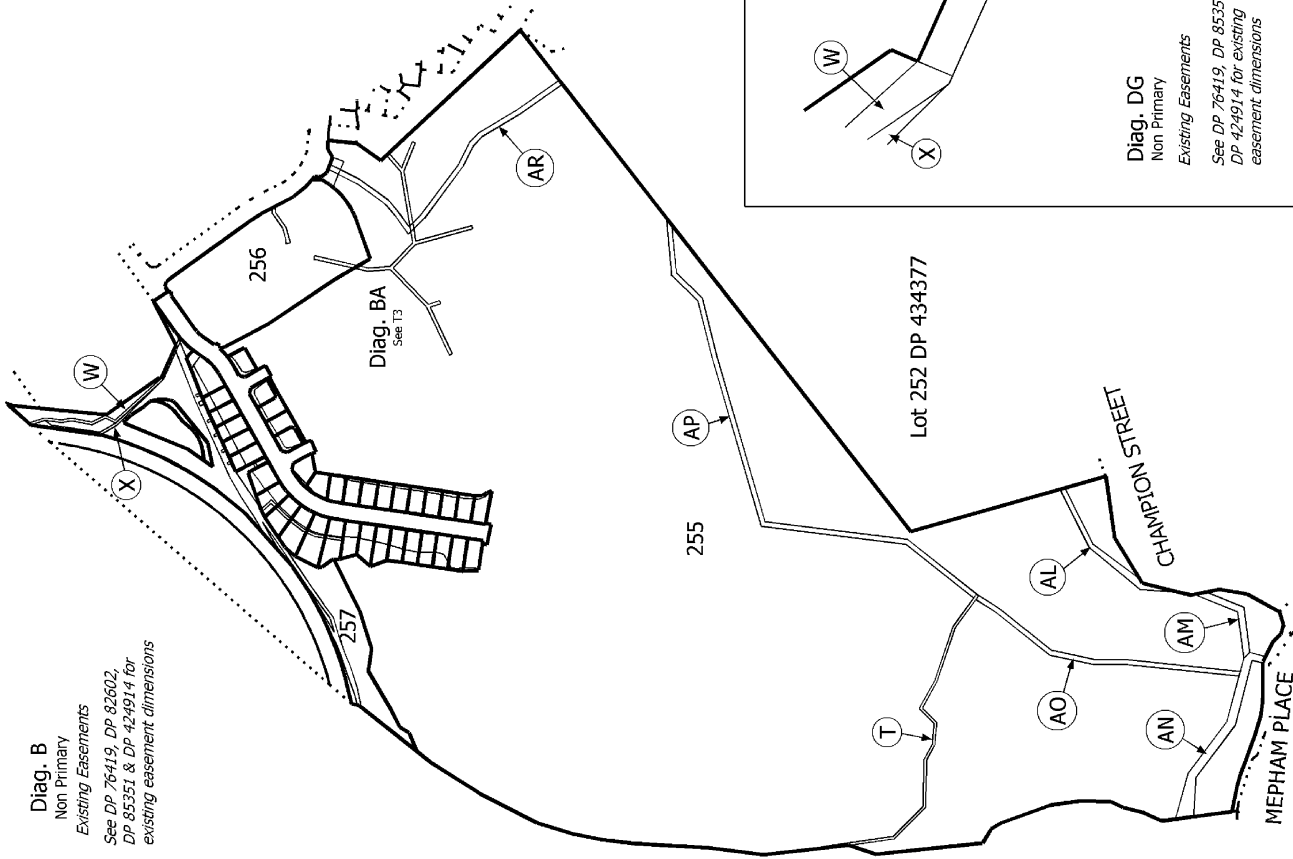
Lots 255 - 257, 304 & 797 - 834 being a subdivision of Sections 1 - 3 SO 23915,
Pt Sec 1 SO 36182, Lot 3 DP 328361 and Lot 253 DP 434377



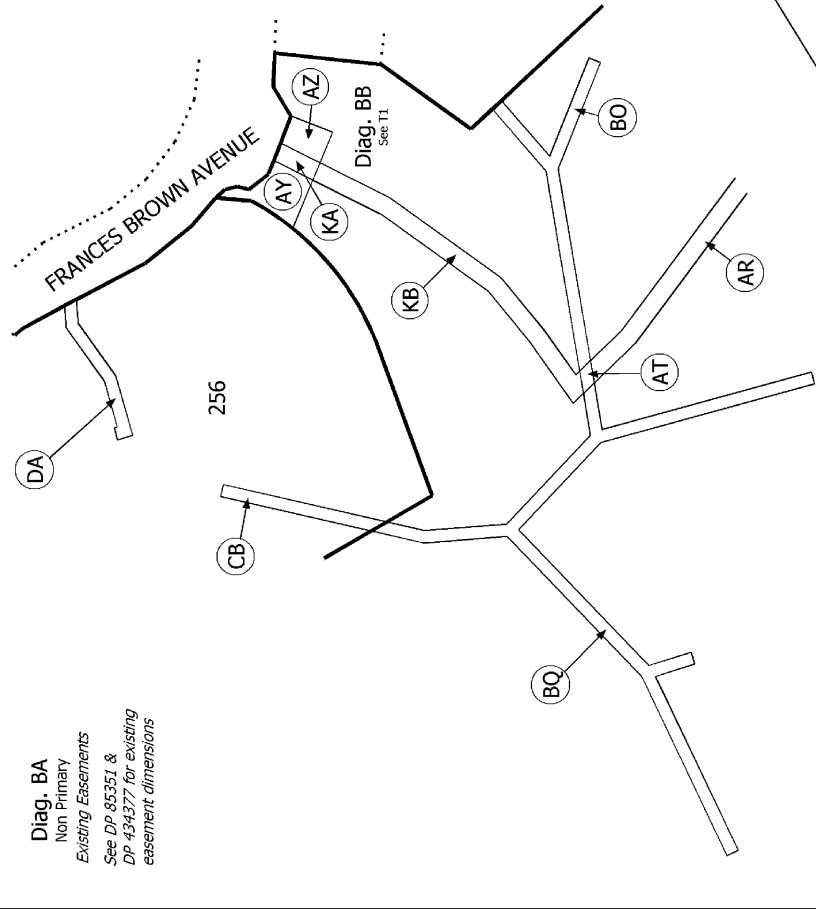
<p>T 2/14</p>	<p>Title Plan DP 456154</p>	<p>Lots 255 - 257, 304 & 797 - 834 Pt Sec 1 SO 36182, Lot 3 DP 328361 and Lot 253 DP 434377</p>	<p>Land District: Wellington Digitally Generated Plan Generated on: 23/04/2013 08:17 am Page 13 of 25</p>
<p>Lots 255, 257, 304 & 797 - 834 subject to Part 4A Conservation Act 1987 Lot 255 where formerly Lot 1 DP 85351 subject to Part 4A Conservation Act 1987</p>	<p>Surveyor: Kristopher Dean Gough Firm: Cutriss Consultants Ltd (Lower Hut)</p>	<p>Deposited on: 26/03/2013</p>	



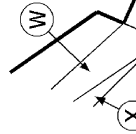
Diag. B
 Non Primary
 Existing Easements
 See DP 76419, DP 82602,
 DP 85351 & DP 424914 for
 existing easement dimensions



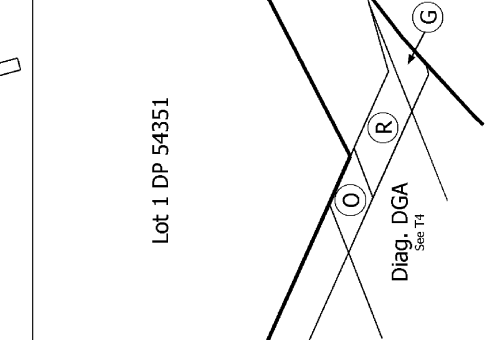
Diag. BA
 Non Primary
 Existing Easements
 See DP 85351 &
 DP 434377 for existing
 easement dimensions



Diag. DG
 Non Primary
 Existing Easements
 See DP 76419, DP 85351 &
 DP 424914 for existing
 easement dimensions



Diag. DGA
 See T1



T 3/14

Land District: Wellington

Digitally Generated Plan

Generated on: 23/04/2013 08:17 am Page 14 of 25

Lots 255 - 257, 304 & 797 - 834 being a subdivision of Sections 1 - 3 SO 23915,
 Pt Sec 1 SO 36182, Lot 3 DP 328361 and Lot 253 DP 434377

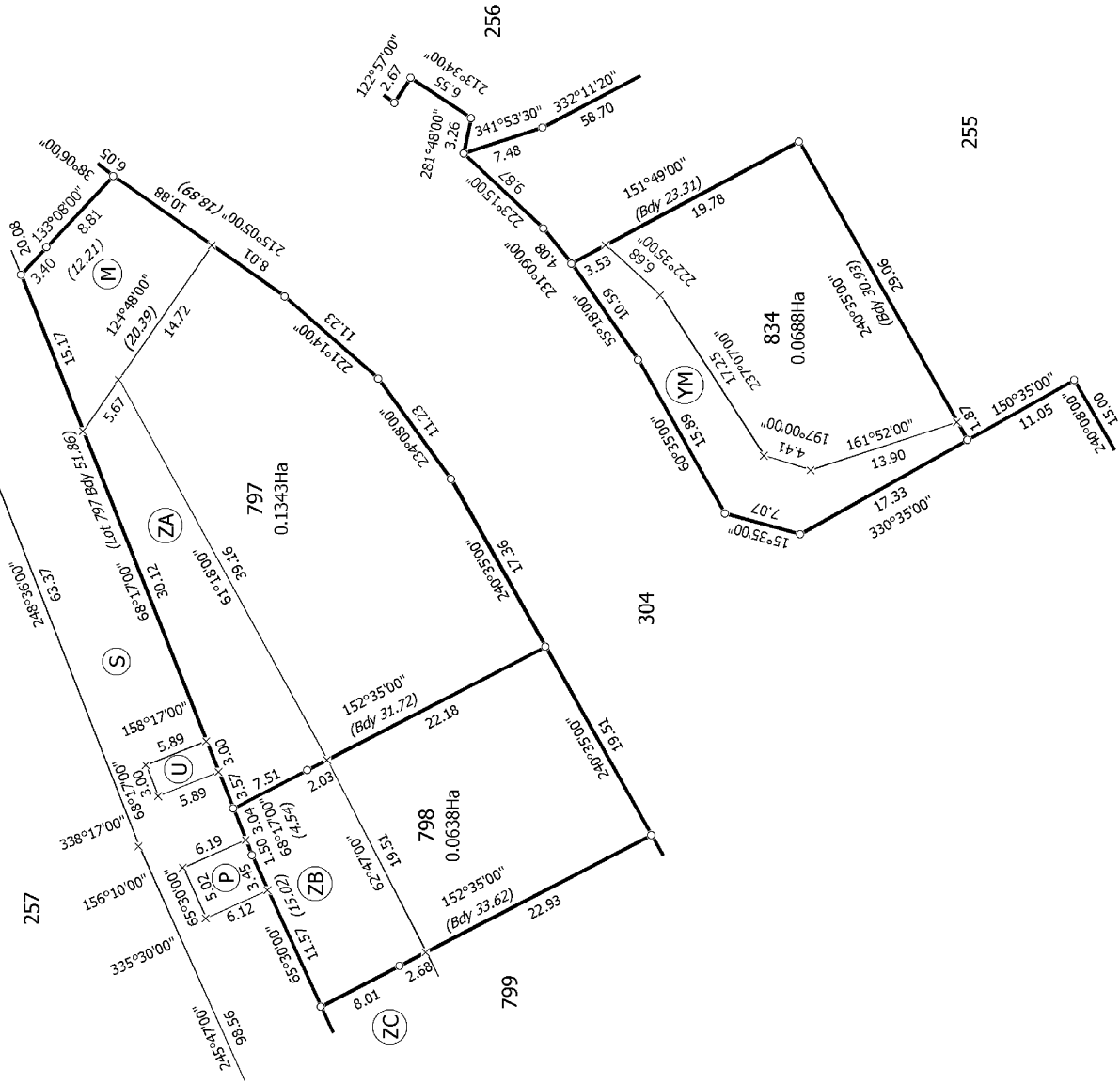
Surveyor: Kristopher Dean Gough
 Firm: Cuttriss Consultants Ltd (Lower Hut)

Title Plan
 DP 456154

Deposited on: 26/03/2013



Diag. DCH



T 5/14

Land District: Wellington

Digitally Generated Plan

Generated on: 23/04/2013 08:17 am Page 16 of 25

Lots 255 - 257, 304 & 797 - 834 being a subdivision of Sections 1 - 3 SO 23915,
Pt Sec 1 SO 36182, Lot 3 DP 328361 and Lot 253 DP 434377

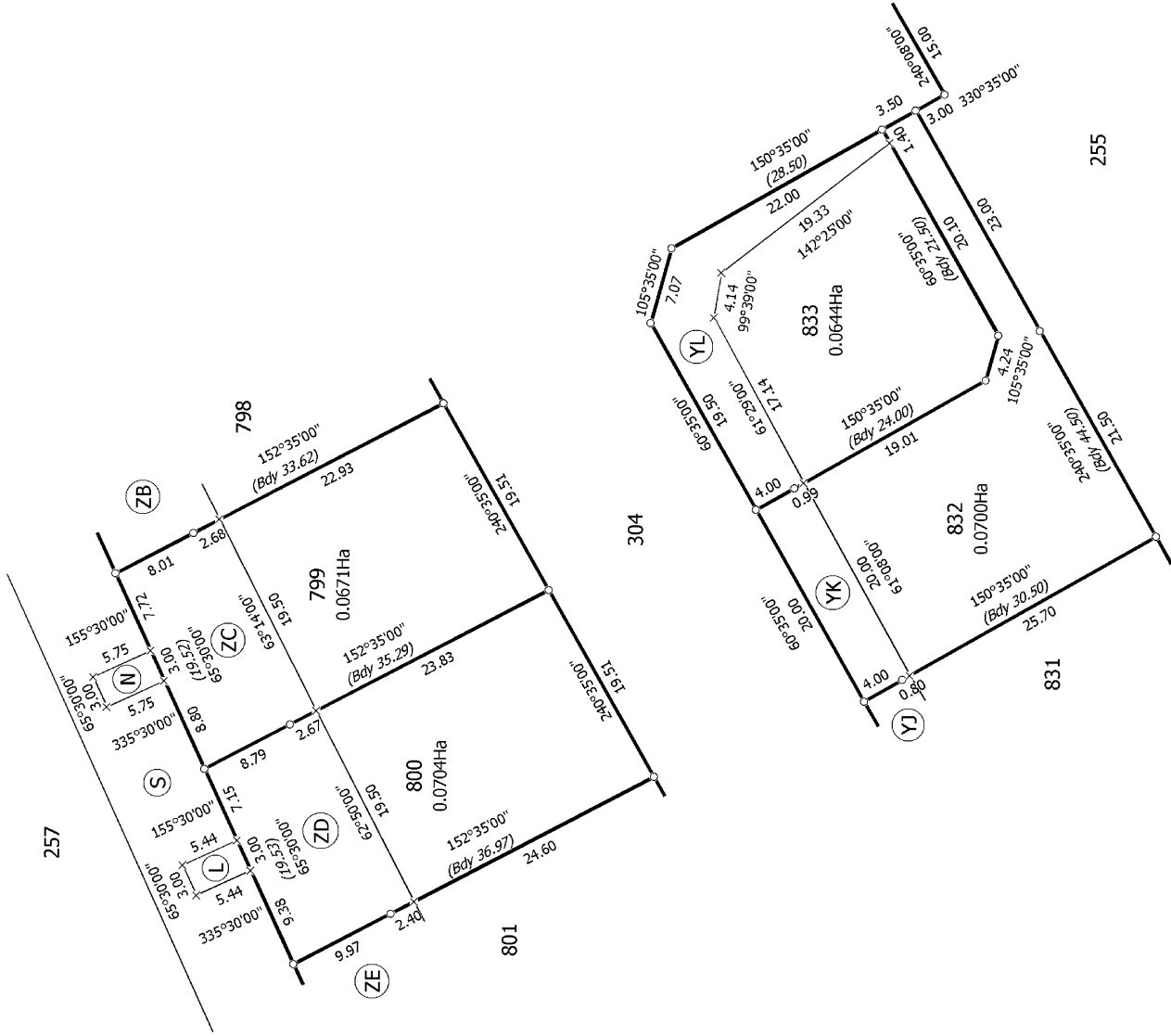
Surveyor: Christopher Dean Gough
Firm: Cutriss Consultants Ltd (Lower Hut)

Title Plan
DP 456154

Deposited on: 26/03/2013



Diag. DCG



T 6/14

Land District: Wellington

Digitally Generated Plan

Generated on: 23/04/2013 08:17am Page 17 of 25

Lots 255 - 257, 304 & 797 - 834 being a subdivision of Sections 1 - 3 SO 23915,
Pt Sec 1 SO 36182, Lot 3 DP 328361 and Lot 253 DP 434377

Surveyor: Kristopher Dean Gough
Firm: Cutriss Consultants Ltd (Lower Hut)

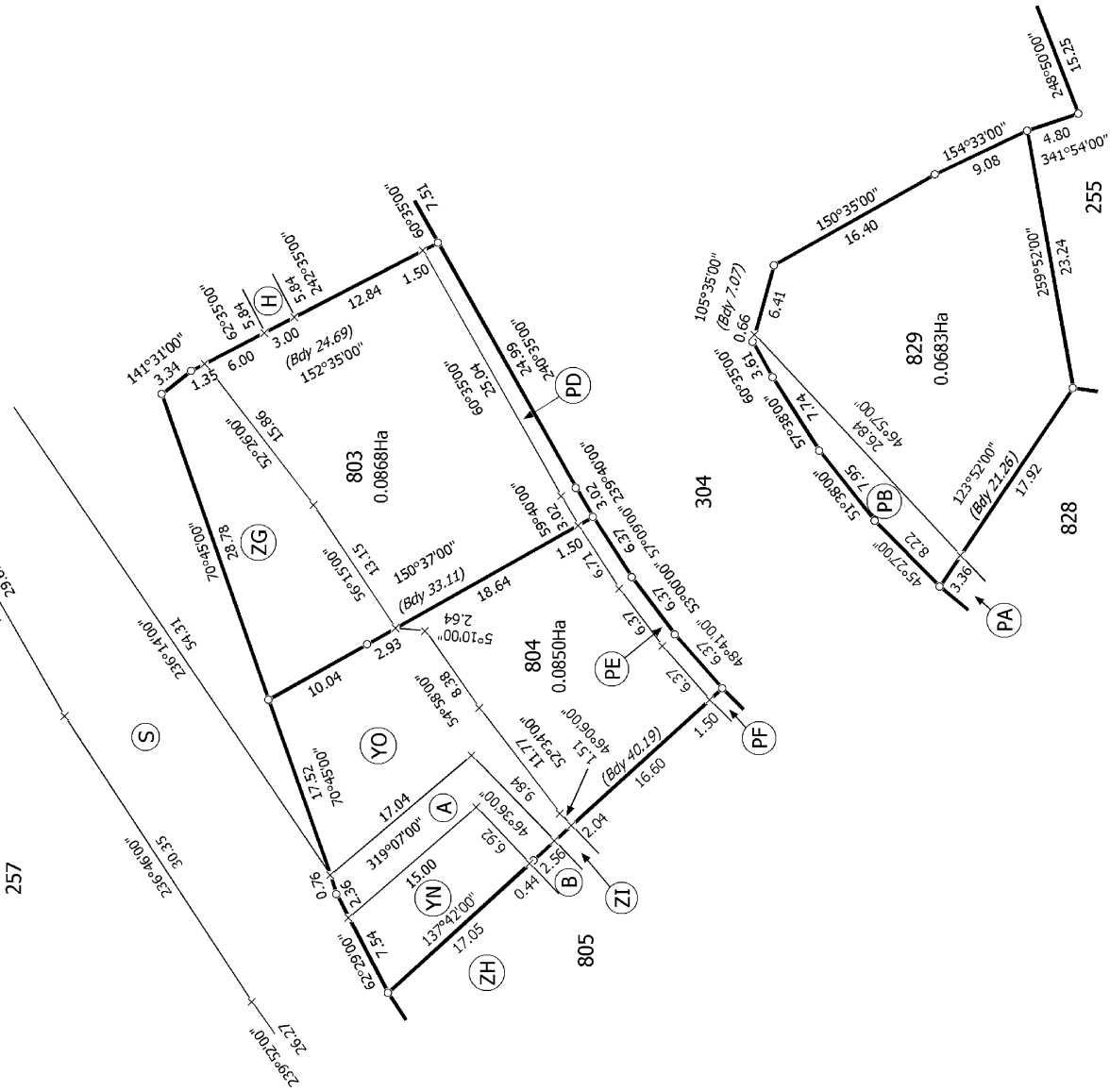
Title Plan
DP 456154

Deposited on: 26/03/2013



Diag. DD

257



T 8/14

Land District: Wellington

Digitally Generated Plan
Generated on: 23/04/2013 08:17 am Page 19 of 25

Lots 255 - 257, 304 & 797 - 834 being a subdivision of Sections 1 - 3 SO 23915,
Pt Sec 1 SO 36182, Lot 3 DP 328361 and Lot 253 DP 434377

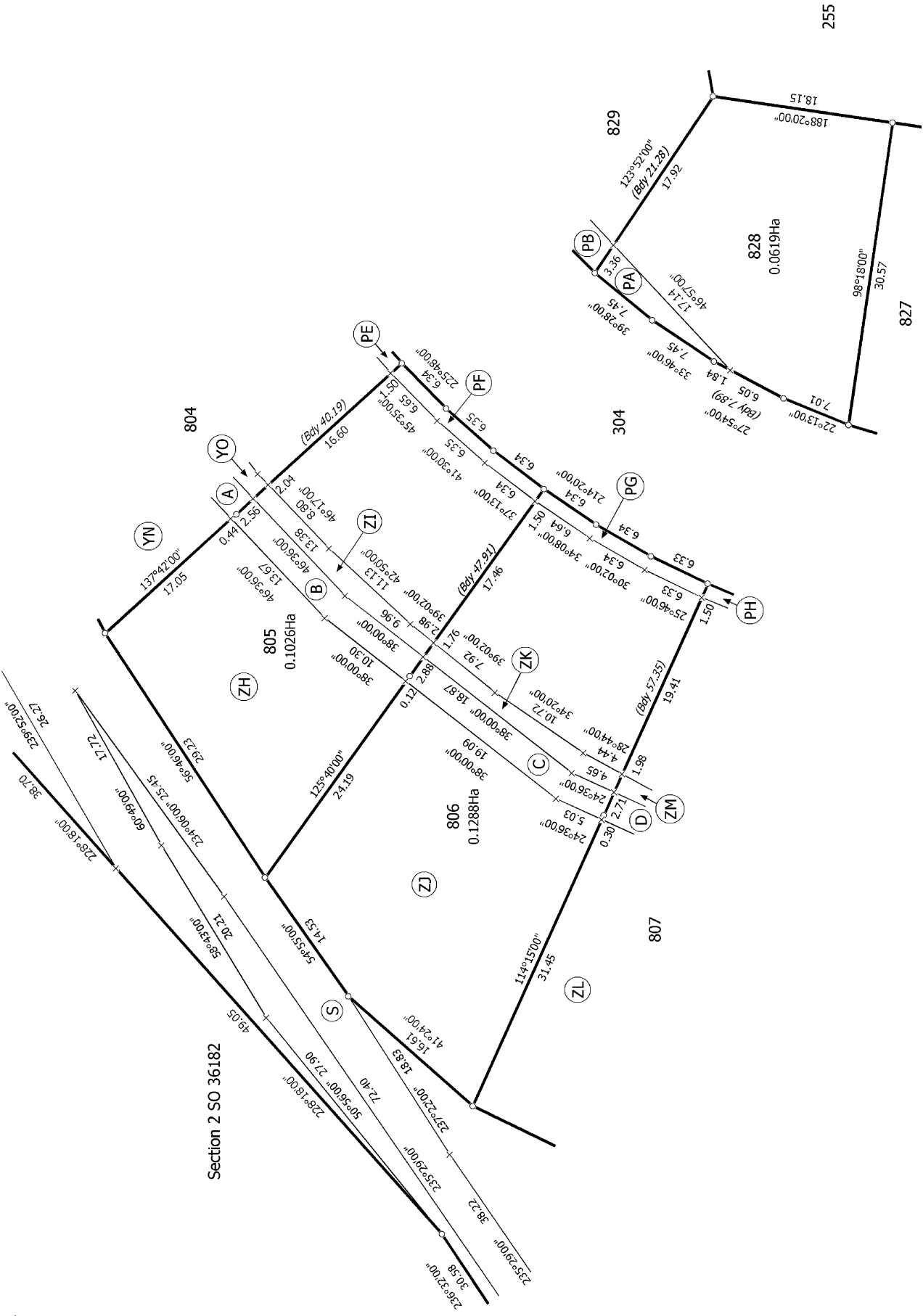
Surveyor: Kristopher Dean Gough
Firm: Cuttriss Consultants Ltd (Lower Hut)

Title Plan
DP 456154

Deposited on: 26/03/2013



Diag. DCA



T 9/14

Land District: Wellington

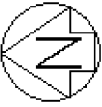
Digitally Generated Plan
Generated on: 23/04/2013 08:17 am Page 20 of 25

Lots 255 - 257, 304 & 797 - 834 being a subdivision of Sections 1 - 3 SO 23915,
Pt Sec 1 SO 36182, Lot 3 DP 328361 and Lot 253 DP 434377

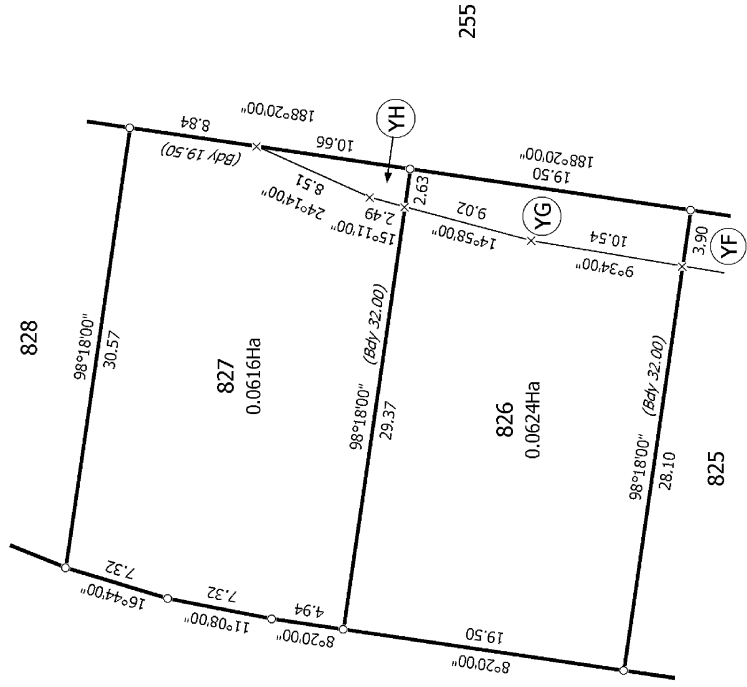
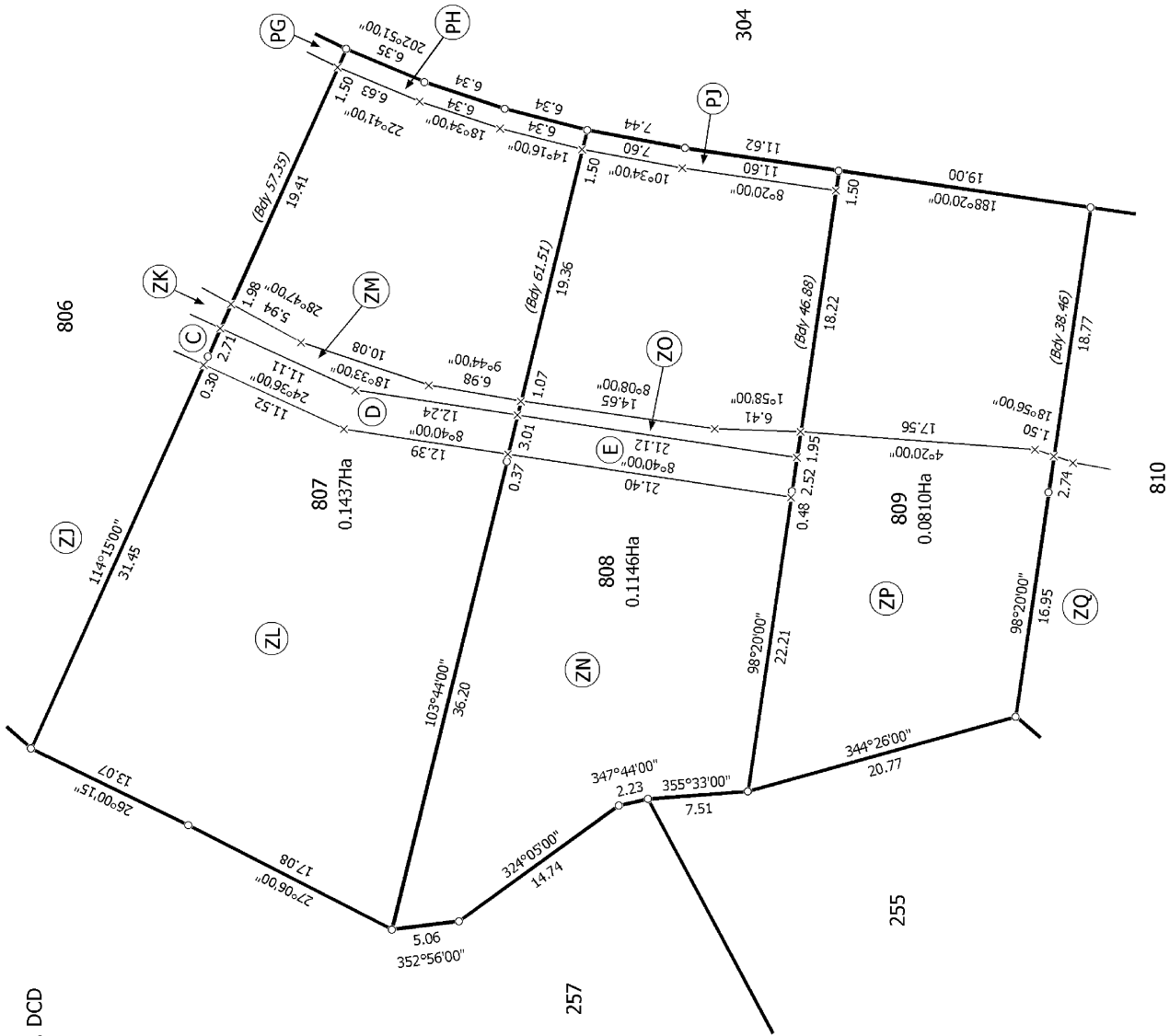
Surveyor: Kristopher Dean Gough
Firm: Cutriss Consultants Ltd (Lower Hut)

Title Plan
DP 456154

Deposited on: 26/03/2013



Diag. DCD



T 10/14

Land District: Wellington

Digitally Generated Plan

Generated on: 23/04/2013 08:17 am Page 21 of 25

Lots 255 - 257, 304 & 797 - 834 being a subdivision of Sections 1 - 3 SO 23915, Pt Sec 1 SO 36182, Lot 3 DP 328361 and Lot 253 DP 434377

Surveyor: Kristopher Dean Gough

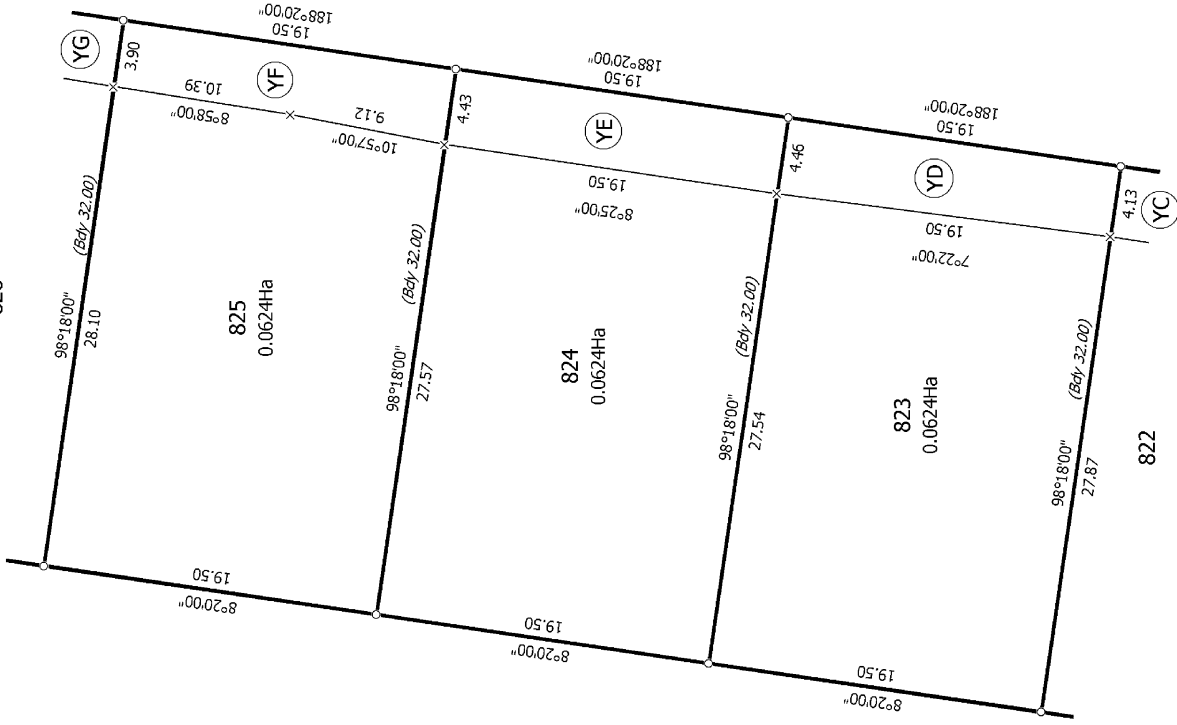
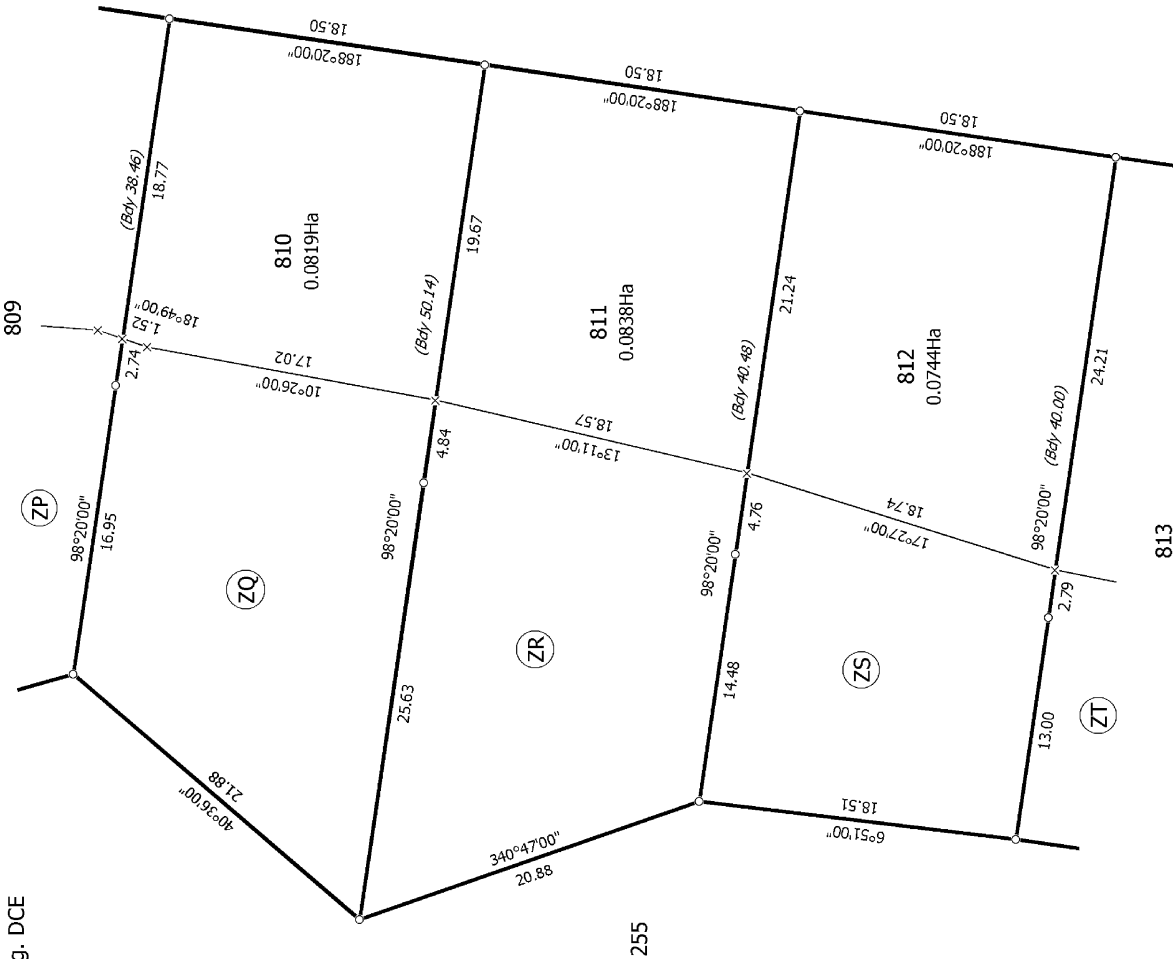
Firm: Cuttriss Consultants Ltd (Lower Hut)

Title Plan
DP 456154

Deposited on: 26/03/2013



Diag. DCE



T 11/14

Land District: Wellington

Digitally Generated Plan

Generated on: 23/04/2013 08:17 am Page 22 of 25

Lots 255 - 257, 304 & 797 - 834 being a subdivision of Sections 1 - 3 SO 23915, Pt Sec 1 SO 36182, Lot 3 DP 328361 and Lot 253 DP 434377

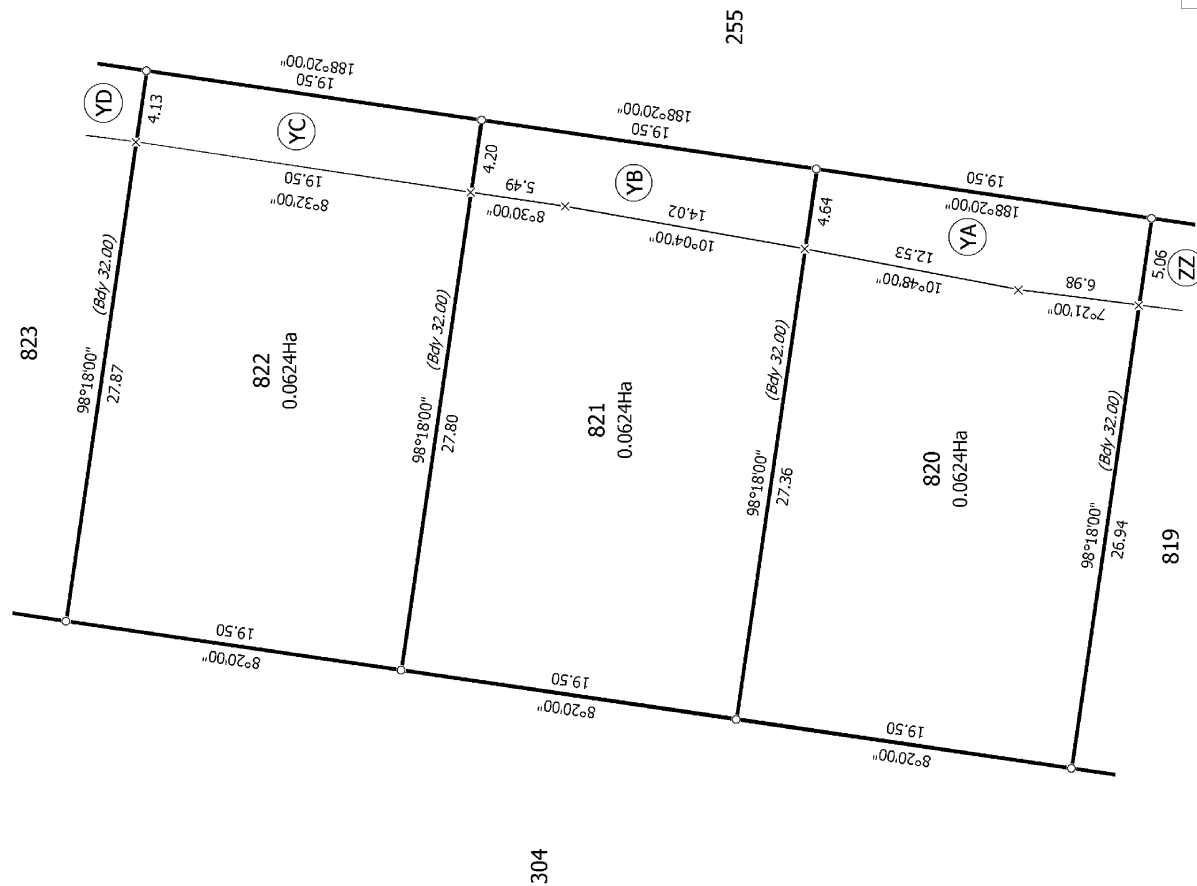
Surveyor: Christopher Dean Gough
Firm: Cuttriss Consultants Ltd (Lower Hut)

Title Plan
DP 456154

Deposited on: 26/03/2013



Diag. DCC



T 12/14

Land District: Wellington

Digitally Generated Plan

Generated on: 23/04/2013 08:17 am Page 23 of 25

Lots 255 - 257, 304 & 797 - 834 being a subdivision of Sections 1 - 3 SO 23915, Pt Sec 1 SO 36182, Lot 3 DP 328361 and Lot 253 DP 434377

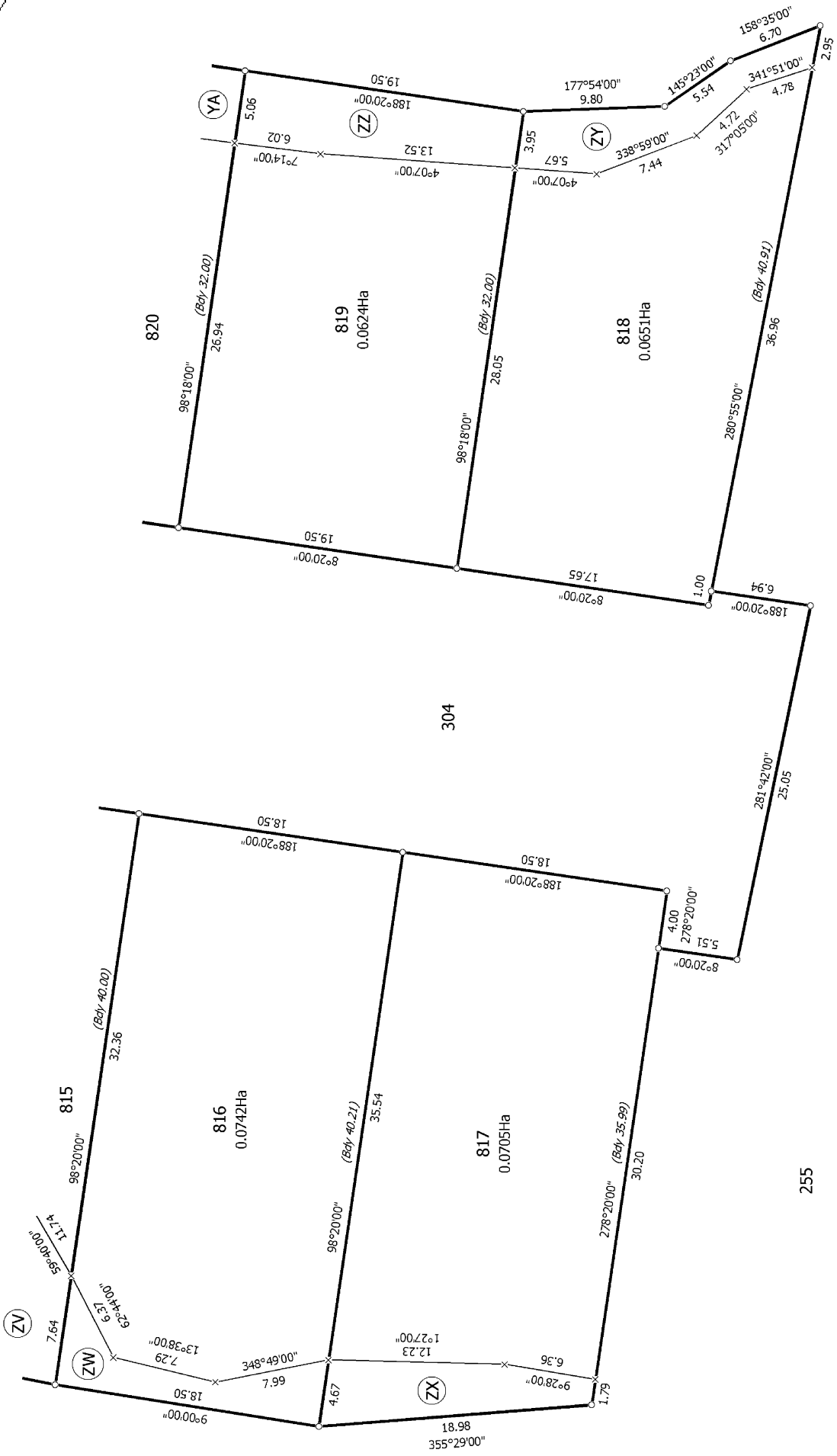
Surveyor: Kristopher Dean Gough
Firm: Cuttriss Consultants Ltd (Lower Hut)

Title Plan
DP 456154

Deposited on: 26/03/2013



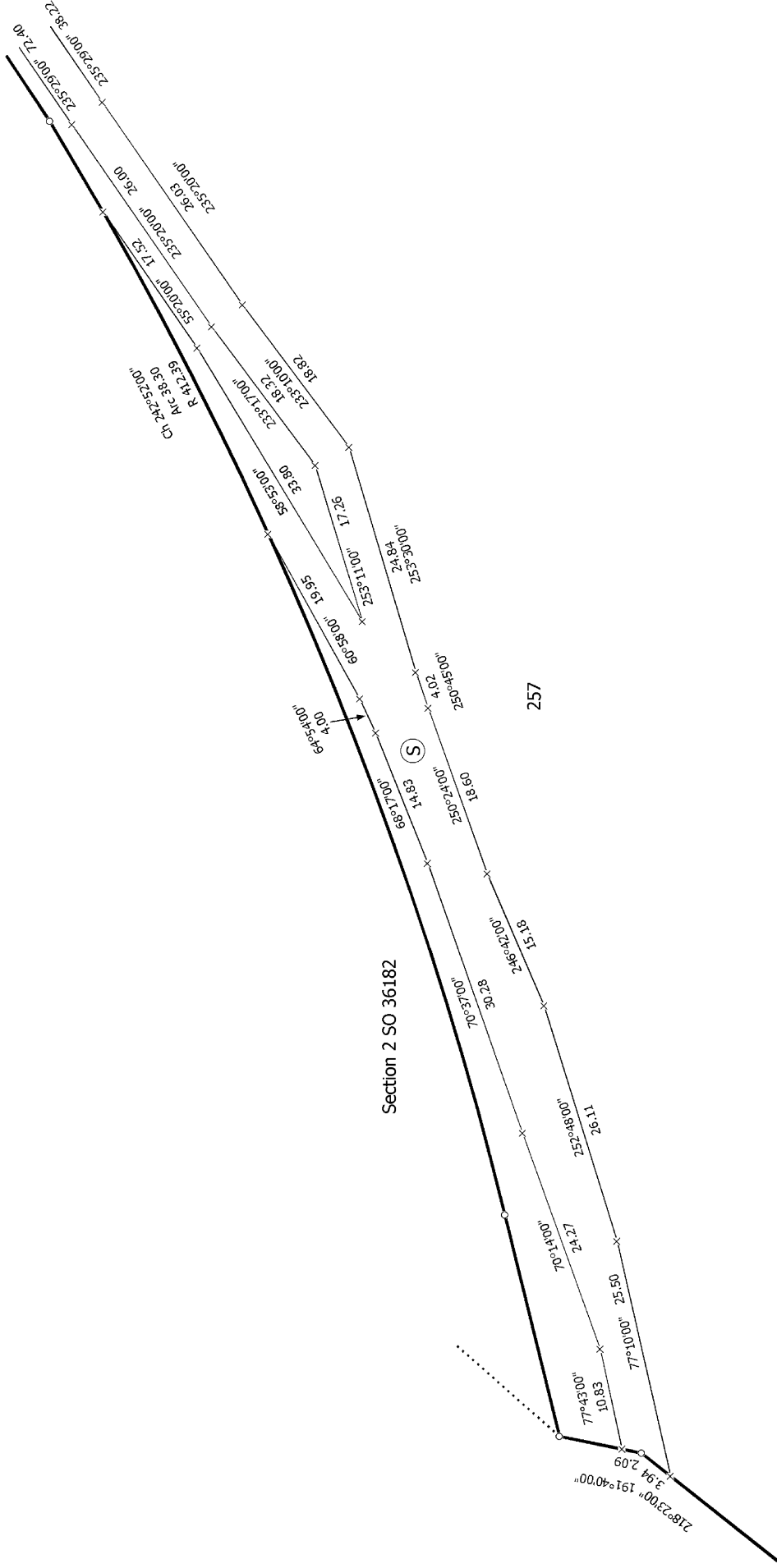
Diag. DCB



T 13/14

<p>Land District: Wellington</p> <p>Digitally Generated Plan</p> <p>Generated on: 23/04/2013 08:17 am Page 24 of 25</p>	<p>Lots 255 - 257, 304 & 797 - 834 being a subdivision of Sections 1 - 3 SO 23915, Pt Sec 1 SO 36182, Lot 3 DP 328361 and Lot 253 DP 434377</p>	<p>Surveyor: Kristopher Dean Gough</p> <p>Firm: Cuttriss Consultants Ltd (Lower Hut)</p>	<p>Title Plan</p> <p>DP 456154</p> <p>Deposited on: 26/08/2013</p>
---	---	--	--

Diag. DB
Non Primary



T 14/14

Land District: Wellington

Digitally Generated Plan
Generated on: 23/04/2013 08:17 am Page 25 of 25

Lots 255 - 257, 304 & 797 - 834 being a subdivision of Sections 1 - 3 SO 23915,
Pt Sec 1 SO 36182, Lot 3 DP 328361 and Lot 253 DP 434377

Surveyor: Kristopher Dean Gough
Firm: Cuttriss Consultants Ltd (Lower Hutt)

Title Plan
DP 456154

Deposited on: 26/03/2013