

NOTES

1. LEVELS ARE IN TERMS OF MEAN SEA LEVEL - WELLINGTON CITY DATUM 1953

2. CONTOUR INTERVAL = 1.0m

01020304050m

SCALE

LEGEND:

STAGE 11 BOUNDARY

FUTURE LOTS

TOP OF BANK

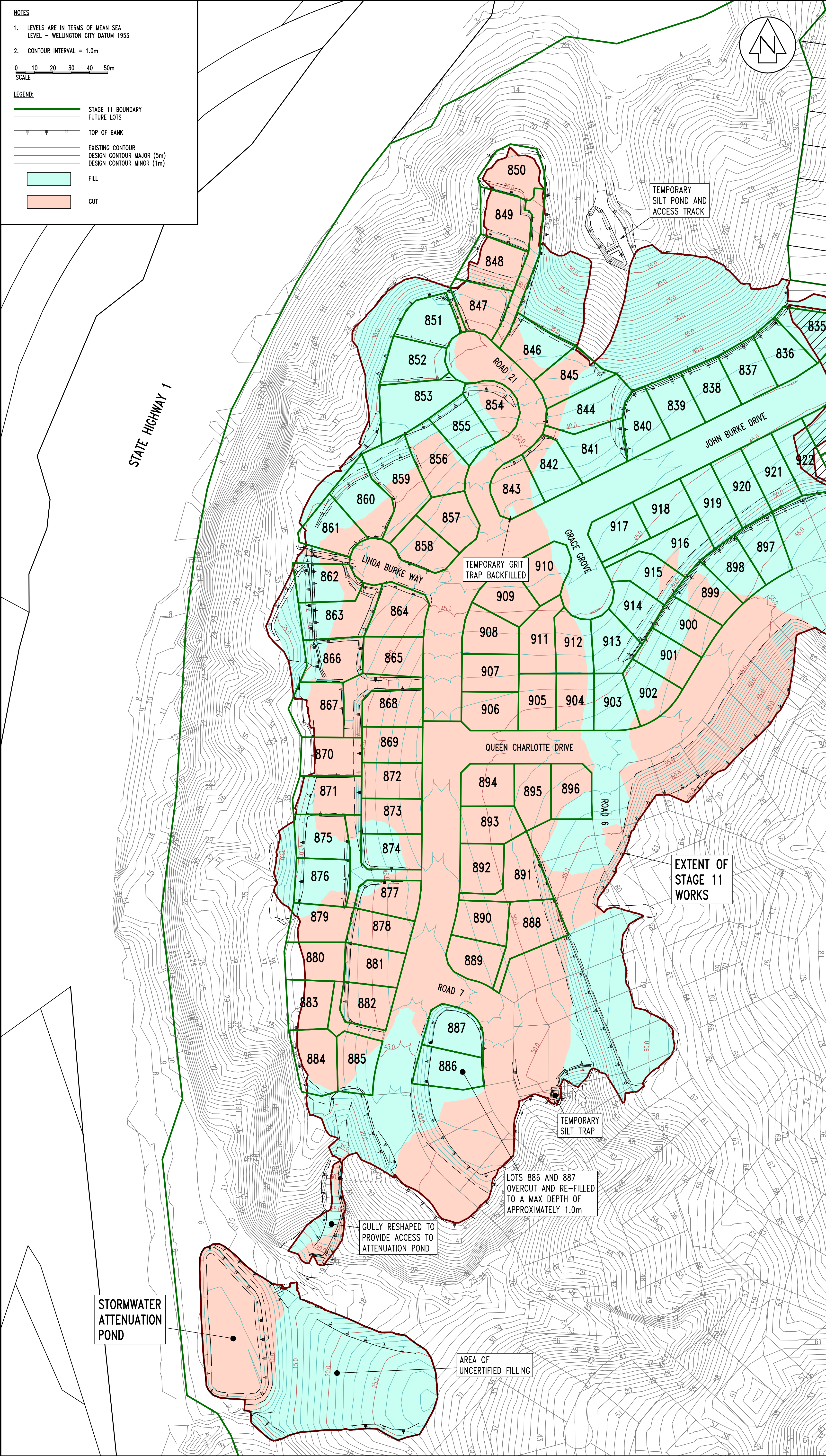
EXISTING CONTOUR

DESIGN CONTOUR MAJOR (5m)

DESIGN CONTOUR MINOR (1m)

FILL

CUT



AMENDMENT

NAME

DATE

A

BATTER LOT 860 & 861 ALTERED

KML

02/14

STAGE 10

MINOR TRIMMING DURING CONSTRUCTION

AREA HATCHED EARTHWORKED UNDER STAGE 10 WORKS

EXTENT OF STAGE 11 WORKS

TEMPORARY SILT TRAP

LOTS 886 AND 887 OVERCUT AND RE-FILLED TO A MAX DEPTH OF APPROXIMATELY 1.0m

GULLY RESHAPED TO PROVIDE ACCESS TO ATTENUATION POND

AREA OF UNCERTIFIED FILLING

STORMWATER ATTENUATION POND

Cuttriss Consultants Limited

Hutt Valley, Wellington, Kapiti Coast

Cuttriss

Land Surveyors, Engineers & Resource Managers

Lower Hutt Branch - Level 3 Crest House, 92 Queens Drive, Lower Hutt

Postal Address - PO Box 30 428, Lower Hutt 5040

Telephone (04) 939 9245 Fax (04) 939 9249 Email hut@cuttriss.co.nz

Paraparaumu Branch - 33 Kapiti Road, Paraparaumu

Postal Address - PO Box 388, Paraparaumu 5254

Telephone (04) 904 5420 Fax (04) 904 5423 Email kapiti@cuttriss.co.nz

Copyright of this drawing is vested in Cuttriss Consultants Limited

CLIENT

CARRUS LIMITED

JOB

AOTEA

STAGE 11 - EARTHWORKS

ASBUILT

EARTHWORKS

SCALE

1:1000 (A3 1:2000)

SIZE

A1

FIELDWORK

DESIGNED

DRAWN

CHECKED

KDG

RFH

KML

KDG

DATE

12/13

10/12

12/13

02/14

DRAWING NUMBER

27511ASB E

SHEET

1

OF

2

SHEETS

REVISION

A

NOTES

1. LEVELS ARE IN TERMS OF MEAN SEA LEVEL - WELLINGTON CITY DATUM 1953

2. CONTOUR INTERVAL = 1.0m

01020304050m

SCALE

LEGEND:

STAGE 11 BOUNDARY

FUTURE LOTS

TOP OF BANK

EXISTING CONTOUR

DESIGN CONTOUR MAJOR (5m)

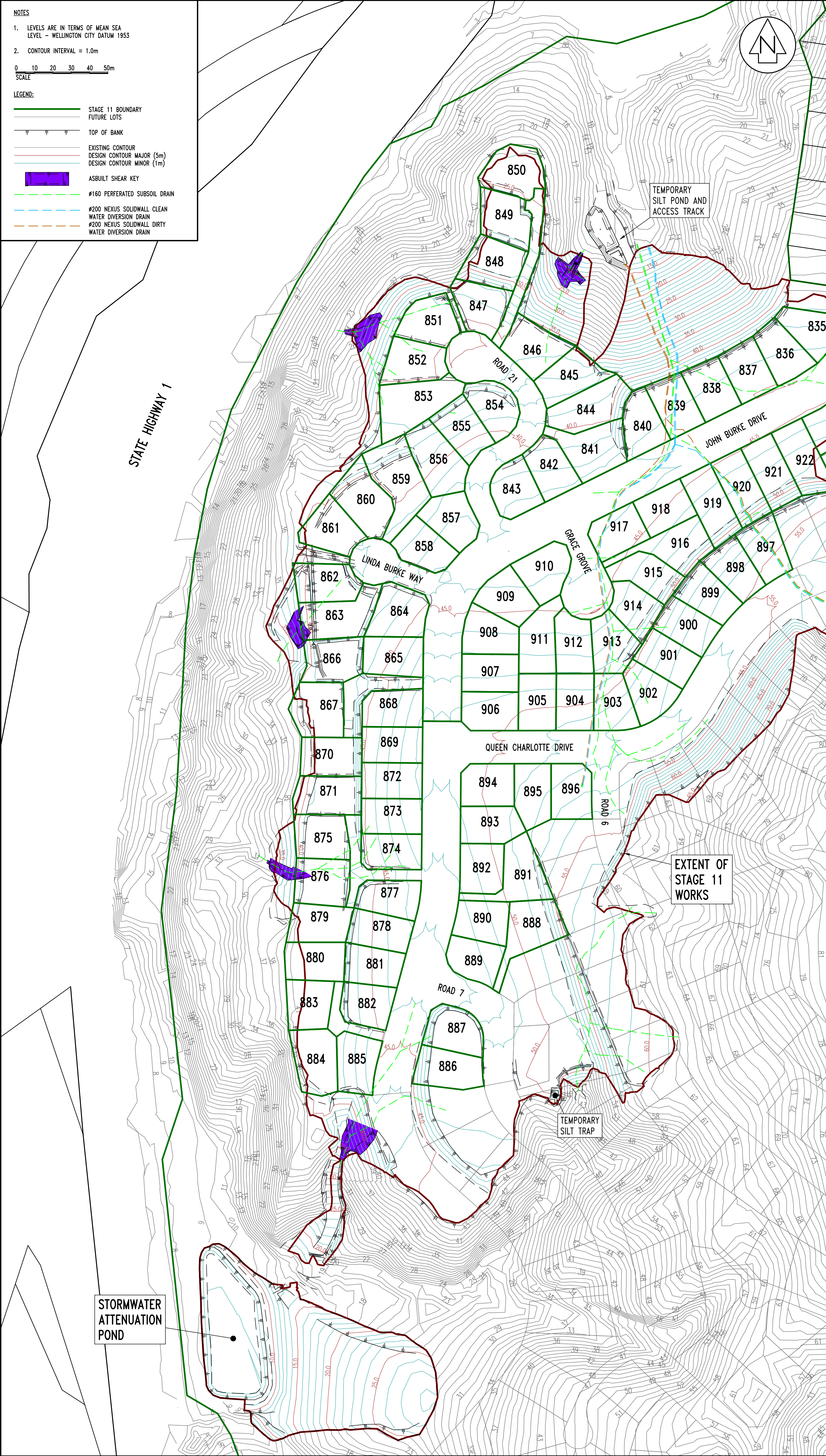
DESIGN CONTOUR MINOR (1m)

ASBUILT SHEAR KEY

Ø160 PERFERATED SUBSOIL DRAIN

Ø200 NEXUS SOLIDWALL CLEAN WATER DIVERSION DRAIN

Ø200 NEXUS SOLIDWALL DIRTY WATER DIVERSION DRAIN



AMENDMENT

A

BATTER LOT 860 & 861 ALTERED

NAME

KML

DATE

02/14

STAGE 10

STAGE 11

EXTENT OF STAGE 11 WORKS

TEMPORARY SILT POND AND ACCESS TRACK

TEMPORARY SILT TRAP

STORMWATER ATTENUATION POND

Cuttriss Consultants Limited

Hutt Valley, Wellington, Kapiti Coast

Cuttriss

Land Surveyors, Engineers & Resource Managers

Lower Hutt Branch - Level 3, Crest House, 92 Queens Drive, Lower Hutt

Postal Address - PO Box 30 428, Lower Hutt 5040

Telephone (04) 939 9245 Fax (04) 939 9249 Email hutt@cuttriss.co.nz

Paraparaumu Branch - 33 Kapiti Road, Paraparaumu

Postal Address - PO Box 388, Paraparaumu 5254

Telephone (04) 904 5420 Fax (04) 904 5423 Email kapiti@cuttriss.co.nz

Copyright of this drawing is vested in Cuttriss Consultants Limited

CLIENT

CARRUS LIMITED

JOB

AOTEA

STAGE 11 - EARTHWORKS

ASBUILT

SHEAR KEYS & SUBSOILS

SCALE

1:1000 (A3 1:2000)

SIZE

A1

FIELDWORK

DESIGNED

DRAWN

CHECKED

NAME

KDG

RFH

KML

KDG

DATE

12/13

10/12

12/13

02/14

DRAWING NUMBER

27511ASB E

SHEET

2

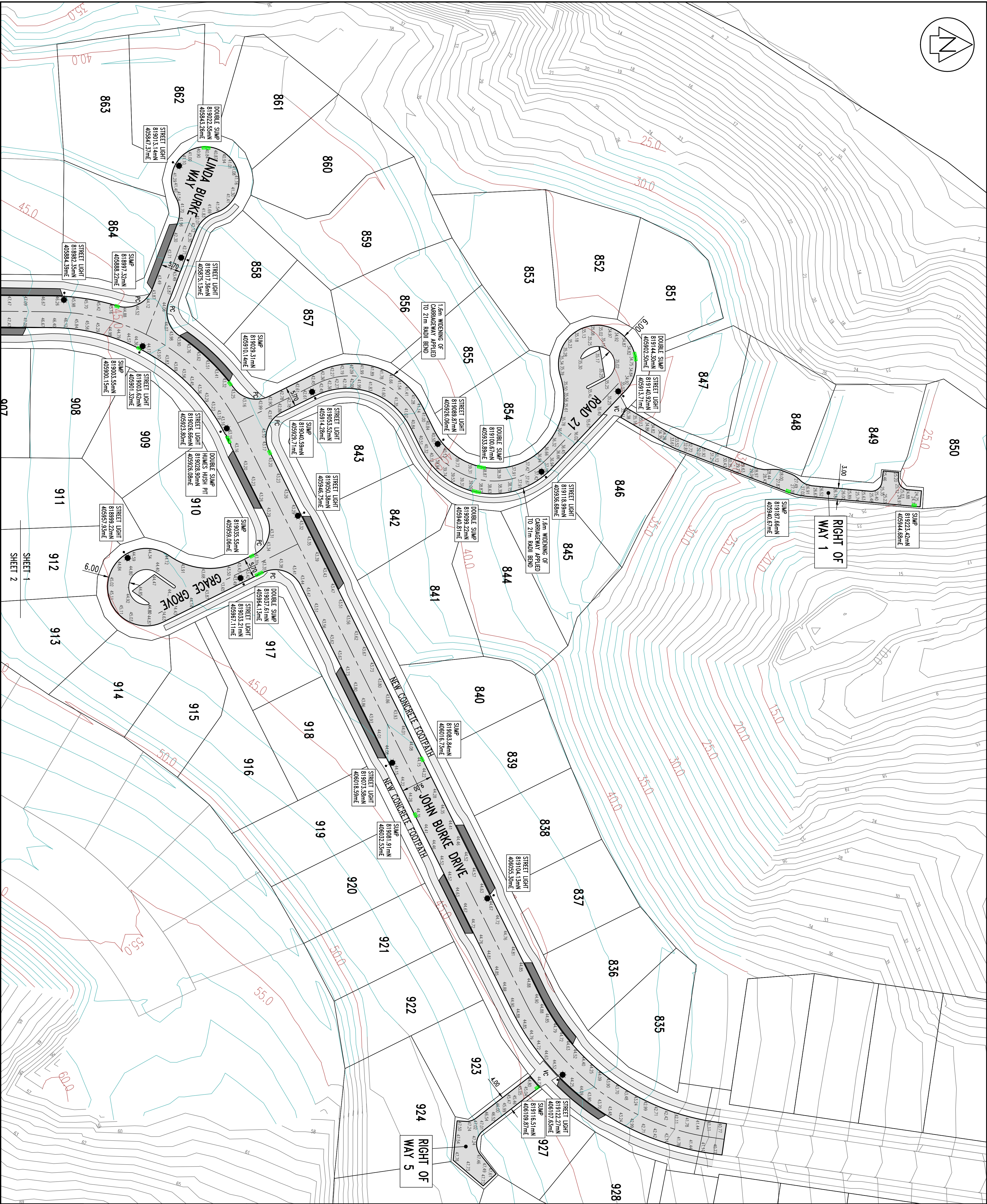
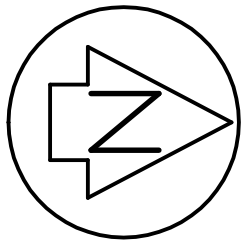
OF

2

SHEETS

REVISION

A



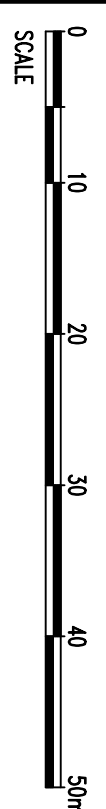
AMENDMENT	NAME	DATE

LEGEND:

- BOUNDARY (FUTURE)
- TOP OF BANK
- EXISTING CONTOUR (1m)
- NEW CONTOUR MAJOR (5m)
- NEW CONTOUR MINOR (1m)
- SUMP
- ROAD CENTRELINE
- INDETTED PARKING
- NEW STREETLIGHT
- PC
- VC
- PRAM CROSSING
- VEHICLE CROSSING
- LEVEL ON TOP OF KERB

NOTES:

- COORDINATE ARE IN TERMS OF NZGD 2000, WELLINGTON CIRCUIT.
- ALL LEVELS ARE IN TERMS OF MEAN SEA LEVEL, WELLINGTON DATUM 1933.
- CONTOURS ARE SHOWN AT 1m INTERVALS.
- LEVELS ARE TOP OF KERB.
- ALL ROAD SUMPS ARE TO PCC STANDARDS.
- ROAD PAVEMENT – MIN 20mm ASPHALTIC CONCRETE OVER MIN 120mm A740 BASECOURSE OVER 230mm SUBBASE.



Cuttriss
Land Surveyors, Engineers & Resource Managers
Hunt Valley, Wellington, Capital Coast

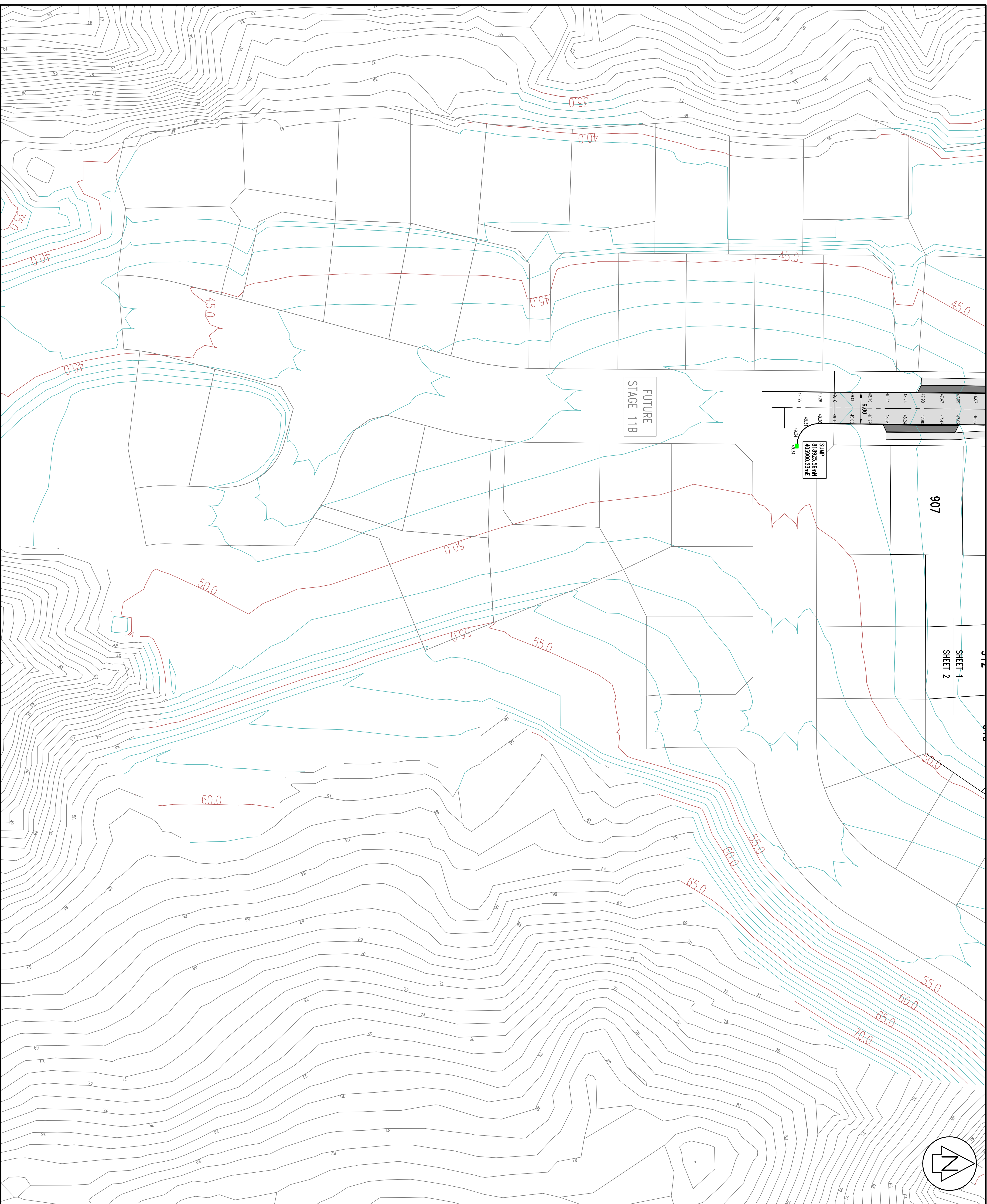
Lower Hunt Road, Level 3, Court House, 80 Queens Drive, Lower Hunt
Postal Address: P.O. Box 30, Lower Hunt Road
Telephone: (04) 559 5245 Fax: (04) 559 5248 Email: info@cuttriss.co.nz
Parapetum Bays, 31 Kaiti Road, Parapetum
Postal Address: P.O. Box 886, Parapetum Bays
Telephone: (04) 559 5245 Fax: (04) 559 5248 Email: info@cuttriss.co.nz

Copyright of this drawing is vested in Cuttriss Consultants Limited

CLIENT
CARRUS LIMITED

JOB
**AOTEA
SUBDIVISION CIVIL WORKS
STAGE 11A
ROAD
ASBUILT PLAN
(SHEET 1 OF 2)**

SCALE	1:500 (1:1000 AT A3)	SIZE	A1
NAME	DATE	DRAWING NUMBER	
FIELDWORK	KOC 12/13	27511ASB R	
DESIGNED	RH 03/13		
DRAWN	KML 12/13	SHEET 1 OF 2	SHEETS
CHECKED	KOC 02/14	REVISION	-

[illegible]

- | LEGEND: | |
|---|------------------------|
| | BOUNDARY |
| | BOUNDARY (FUTURE) |
| | TOP OF BANK |
| | EXISTING CONTOUR (1m) |
| | NEW CONTOUR MAJOR (5m) |
| | NEW CONTOUR MINOR (1m) |
| | SUMP |
| | ROAD CENTRELINE |
| | INDENTED PARKING |
| | NEW STREETLIGHT |
| PC | PAVING CROSSING |
| VC | VEHICLE CROSSING |
| 41.80 | LEVEL ON TOP OF KERB |
| NOTES: | |
| 1. COORDINATE ARE IN TERMS OF NZSD 2000, WELLINGTON CIRCUIT. | |
| 2. ALL LEVELS ARE IN TERMS OF MEAN SEA LEVEL WELLINGTON DATUM 1953. | |
| 3. CONTOURS ARE SHOWN AT 1m INTERVALS. | |
| 4. LEVELS ARE TOP OF KERB. | |
| 5. ALL ROAD SURFS ARE TO FCC STANDARDS. | |
| 6. ROAD PAVEMENT - MIN 30mm ASPHALTIC CONCRETE OVER MIN 120mm A740 BASECOURSE OVER 230mm SUBBASE. | |



Cuttriss Consultants Limited
Hutt Valley, Wellington, Kapiti Coast



Lower Hill Branch - Level 3, Crest House, 92 Queens Drive, Lower Hill
Posta Address - PO Box 30 429, Lower Hill 5940
Telephone (04) 939 9245 Fax (04) 939 9249 Email hun@cuttiss.co.nz

Paraparaumu Branch - 33 Kapiti Road, Paraparaumu
Posta Address - PO Box 386, Paraparaumu 5504
Telephone (04) 904 5420 Fax (04) 904 5425 Email kapti@cuttiss.co.nz

Copyright of this drawing is vested in Cuttriss Consultants Limited

CLIENT

CARRUS LIMITED

**JOB
AOTEA
SUBDIVISION CIVIL WORKS
STAGE 11A**

**ROAD
ASBUILT PLAN
(SHEET 2 OF 2)**

SCALE	1:500		(AS 1:1000)	SIZE	A1
	NAME	DATE	DRAWING NUMBER		
FIELDWORK	KDG	12/13	27511ASB R		
DESIGNED	RFH	03/13			
DRAWN	KML	12/13	SHEET	2	OF 2 SHEETS
CHECKED	KDG	02/14	REVISION	-	

AMENDMENT	NAME	DATE

- LEGEND:
- BOUNDARY (STAGE 11A)
 - BOUNDARY (FUTURE STAGE)
 - EXISTING SEWER
 - NEW SEWER
 - STORMWATER
 - SECONDARY OVERLAND FLOW PATH
 - SUMP

- NOTES:
- ALL LEVELS ARE IN TERMS OF MEAN SEA LEVEL, WELLINGTON DATUM 1953.
 - COORDINATES ARE IN TERMS OF NZGD 2000, WELLINGTON CIRCUIT.
 - MARKER STAKES PLACED AT THE TERMINATION POINT OF ALL PRIVATE SEWER CONNECTIONS.

- MANHOLES:
- ALL MANHOLES ARE PRECAST CONCRETE WITH WEIRFORCE HEAVY DUTY CLASS D HINGED LID.
 - ALL MANHOLES ARE #1050 UNLESS SHOWN OTHERWISE.
- PIPE WORK:
- ALL SEWER MAINS ARE #150 UPVC SNI6 UNLESS SHOWN AS DN160 PE.
 - ALL PRIVATE LATERALS ARE #100 UPVC SNI6.



Cuttriss
Land Surveyors, Engineers & Resource Managers
Hunt Valley, Wellington, Capital Coast

Lower Hunt Valley, Lower 3 Court House, 82 Queens Drive, Lower Hunt
Telephone: +64 9 350 33 03, Fax: +64 9 350 33 03, Email: info@cuttriss.co.nz
Parapetum Branch, 25 Kaiti Road, Parapetum
Telephone: +64 9 350 33 03, Fax: +64 9 350 33 03, Email: info@cuttriss.co.nz

Copyright of this drawing is vested in Cuttriss Consultants Limited

CLIENT
CARRUS LIMITED

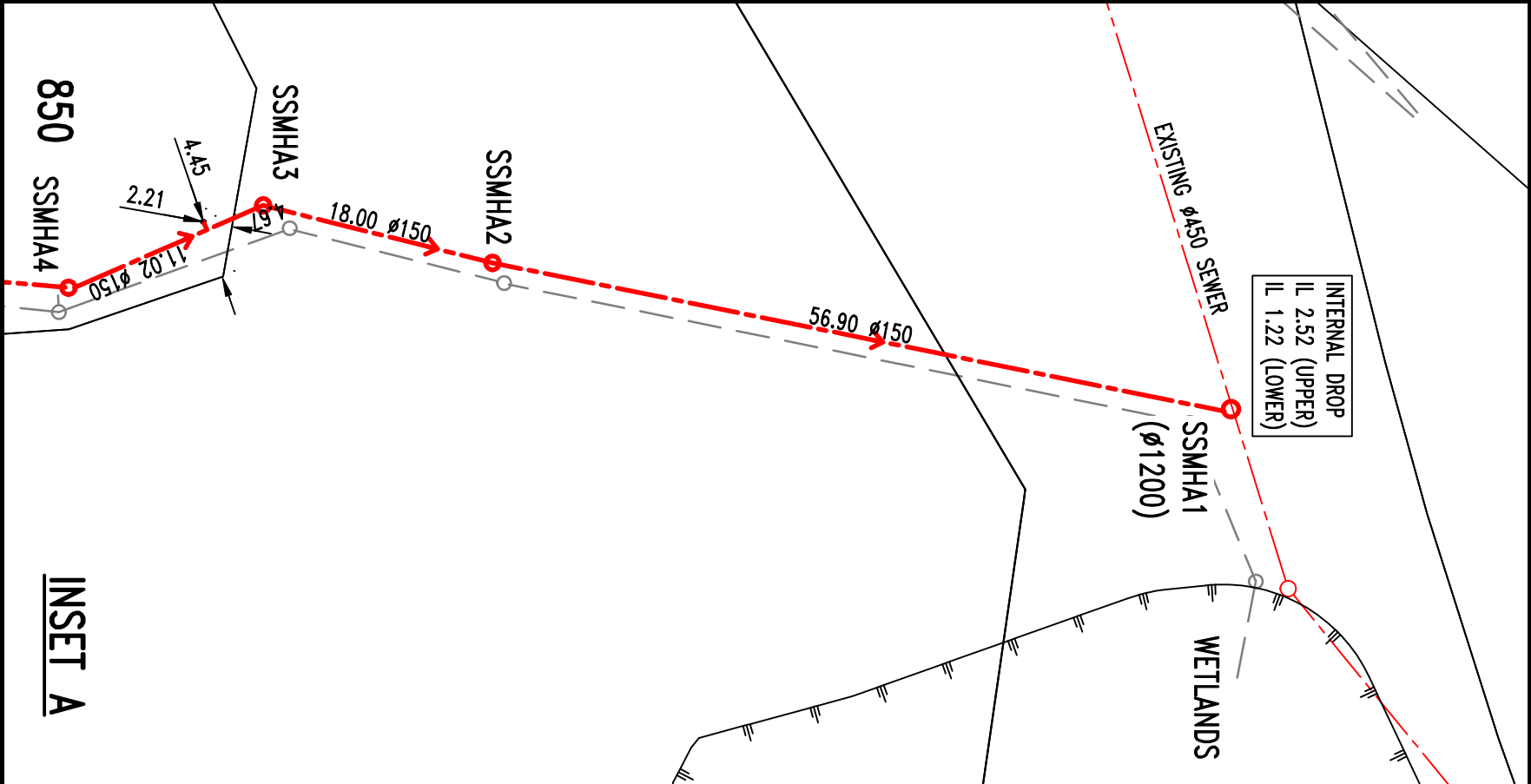
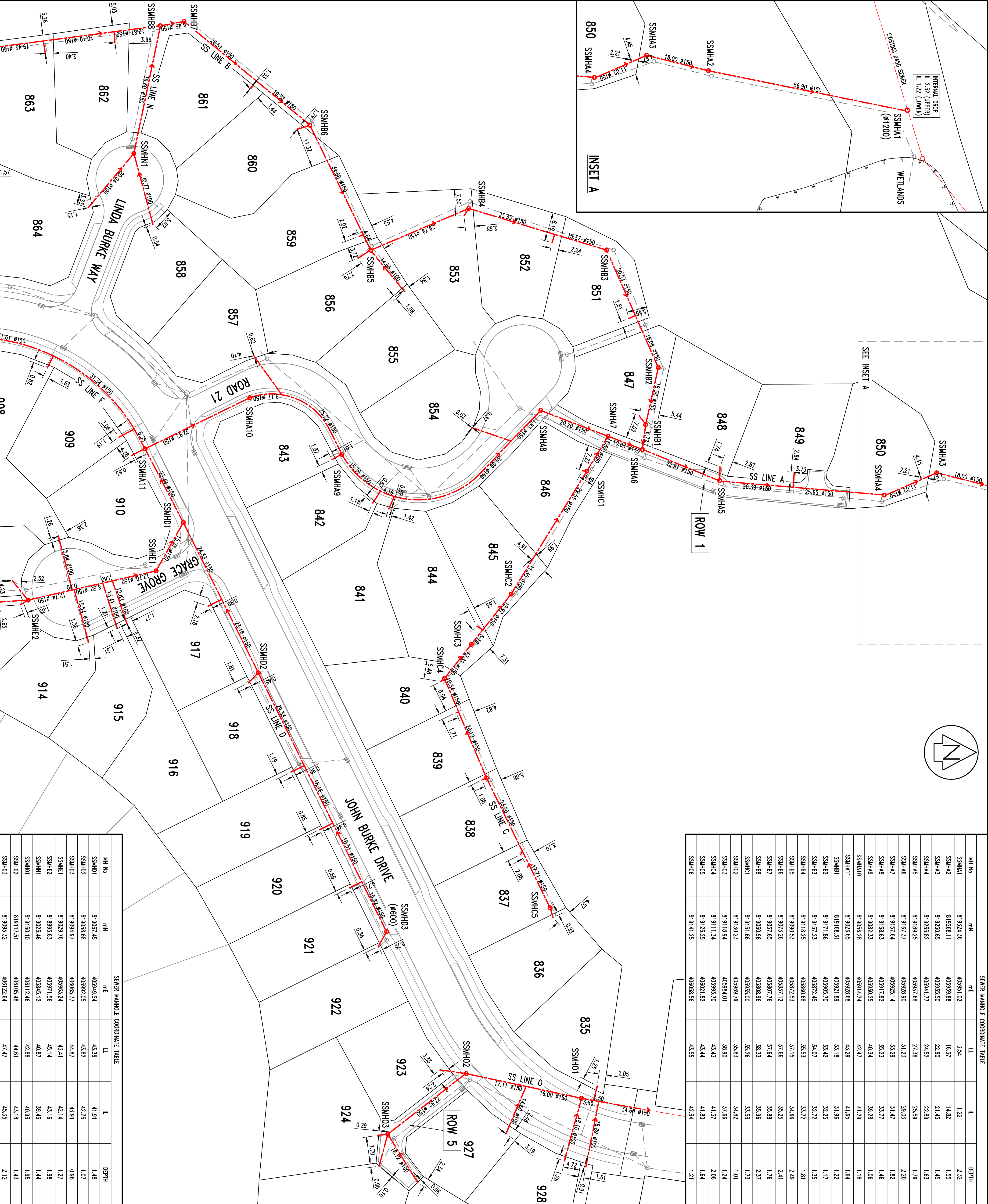
JOB
**AOTEA
SUBDIVISION CIVIL WORKS
STAGE 11A**

**SEWER
ASBUILT PLAN
(SHEET 1 OF 2)**

SCALE	1:500 (A3 1:1000)	SIZE
		A1

NAME	DATE	DRAWING NUMBER
FIELDWORK	KOC 12/13	27511ASB
DESIGNED	RHH 03/13	1 OF 2 SHEETS
DRAWN	KML 12/13	
CHECKED	KOC 02/14	REVISION

MH No.	mN	mE	LL	IL	DEPTH
SSMHA1	819324.36	405951.02	3.54	1.22	2.32
SSMHA2	819768.11	405939.88	16.37	14.82	1.55
SSMHA3	819250.65	405935.50	22.90	21.45	1.45
SSMHA4	819235.82	405941.77	24.52	22.89	1.63
SSMHA5	819189.25	405937.88	27.38	25.59	1.79
SSMHA6	819167.37	405928.90	31.23	29.03	2.20
SSMHA7	819157.64	405925.14	33.29	31.47	1.82
SSMHA8	819138.63	405917.82	35.23	33.77	1.46
SSMHA9	819082.33	405930.25	40.34	39.28	1.06
SSMHA10	819056.28	405914.24	42.47	41.29	1.18
SSMHA11	819026.65	405928.68	43.29	41.85	1.64
SSMHB1	819168.31	405921.88	33.18	31.96	1.22
SSMHB2	819171.86	405905.70	33.42	32.25	1.17
SSMHB3	819157.23	405872.45	34.07	32.72	1.35
SSMHB4	819118.25	405860.88	35.53	33.72	1.81
SSMHB5	819090.53	405872.53	37.15	34.66	2.49
SSMHB6	819073.26	405837.12	37.66	35.25	2.41
SSMHB7	819037.65	405807.76	37.64	35.88	1.76
SSMHB8	819030.96	405808.96	38.33	35.96	2.37
SSMHB9	819151.66	405935.00	35.26	33.53	1.73
SSMHC2	819130.23	405869.79	35.83	34.82	1.01
SSMHC3	819118.94	405984.01	38.90	37.66	1.24
SSMHC4	819111.34	405993.70	43.43	41.37	2.06
SSMHC5	819123.25	406021.82	43.44	41.80	1.64
SSMHC6	819141.25	406038.56	43.55	42.34	1.21



SEWER MANHOLE COORDINATE TABLE

MH No.	mN	mE	LL	IL	DEPTH
SSMHD1	819037.45	405949.54	43.39	41.91	1.48
SSMHD2	819058.68	405992.05	43.82	42.75	1.07
SSMHD3	819094.97	406065.37	44.87	43.91	0.96
SSMHE1	819029.76	405963.24	43.41	42.14	1.27
SSMHE2	818993.63	405971.56	45.14	43.16	1.98
SSMHN1	819023.46	405845.12	40.87	39.43	1.44
SSMHO1	819150.10	406112.46	42.88	40.93	1.95
SSMHO2	819117.51	406103.48	44.61	43.18	1.43
SSMHO3	819095.32	406122.64	47.47	45.35	2.12

[illegible]

LEGEND

- BOUNDARY (STAGE 11A)
BOUNDARY (FUTURE STAGE)
EXISTING SEWER
NEW SEWER
STORMWATER
SECONDARY OVERLAND FLOW
SWMP

NOTES:

1. ALL LEVELS ARE IN TERMS OF MEAN SEA LEVEL, WELLINGTON DATUM 1953.
2. COORDINATES ARE IN TERMS OF NZGD 2000, WELLINGTON CIRCUIT
3. MARKER STAKES PLACED AT THE TERMINATION POINT OF ALL PRIVATE SEWER CONNECTIONS.

MANHOL

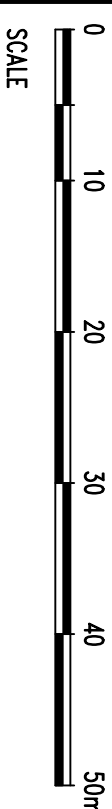
1. ALL MANHOLES ARE PRECAST CONCRETE WITH WEBFORCE HEAVY DUTY CLASS D HINGED LID.

2. ALL MANHOLES ARE Ø1050 UNLESS SHOWN OTHERWISE

PIPE WORK:

1. ALL SOWER MAINS ARE Ø150 uPVC SNI 6 UNLESS SHOWN AS DN160 PE.
2. ALL PRIVATE LATERALS ARE Ø100 uPVC SNI 6.

PIPE WORK:



Cuttriss Consultants Limited
Hutt Valley, Wellington, Kapiti Coast

Hutt Valley, Wellington, Kapiti Coast



Land Surveyors, Engineers & Resource Managers

Lowie Huis Brandt - Lowie 3 Crest House, 32 Queens Drive, Lower Hutt
Postal Address - PO Box 30, 423, (Lower Hutt 5040)
Telephone (04) 339 9249 Fax (04) 339 9249 Email huis@cuttiss.co.nz

Paratutuani Branch - 33 Kauri Road, Paratutuani
Postal Address - PO Box 386, Paratutuani 5254
Telephone (04) 904 5423 Fax (04) 904 5423 Email kauri@cuttiss.co.nz

Copyright of this drawing is vested in Cuttriss Consultants Limited

CLIENT

CARRUS LIMITED

JOB

**AOTEA
SUBDIVISION CIVIL WORKS
STAGE 11A**

**SEWER
ASBUILT PLAN
(SHEET 2 OF 2)**

SEWER MANHOLE COORDINATE TABLE						SCALE	
MAN No	mn	mt	LL	LL	DEPTH	1:500 (A3 1:1000)	
SMH09	818966.02	405817.41	39.77	36.74	3.03	NAME	DATE
SMH22	818993.54	405971.49	45.14	43.16	1.98	KOG	12/13
SMH35	818993.74	405937.73	48.38	46.70	1.68	DRAWING NUMBER	
SMH41	818955.67	405937.20	48.35	47.04	1.31	27511ASB	
SMH42	818915.82	405997.55	49.37	47.56	1.81	DESIGNED	PHL 03/13
						KRL	12/13
						DRAWN	
						CHECKED	KOG 02/14
						REVISION	—
						SHEET	2 OF 2 SHEETS

STORMWATER SUMP COORDINATE TABLE					STORMWATER MANHOLE COORDINATE TABLE				
SUMP No	mN	mE	LL		MH No	mN	mE	LL	IL
SUMP-1	819223.42	405944.68	24.53		SWMH A OUTLET	819324.83	405971.49	N/A	1.62
SUMP-2	819187.66	405940.66	27.29		SWMH B	819326.26	405964.14	3.29	1.81
SUMP-3	819100.67	405933.89	38.72		SWMH C	819321.23	405952.07	3.96	1.97
SUMP-4	819099.22	405940.81	38.69		SWMH D	819269.00	405941.41	15.75	1.99
SUMP-5	819040.58	405929.71	43.02		SWMH E	819253.68	405937.24	22.16	19.94
SUMP-6	819028.90	405926.08	43.02		SWMH F	819253.09	405943.62	24.48	2.46
SUMP-7	819025.31	405910.14	43.17		SWMH G	819224.28	405942.54	24.65	22.76
SUMP-8	819116.51	406109.87	44.67		SWMH H	819190.50	405939.36	27.16	25.06
SUMP-9	819035.55	405959.06	43.20		SWMH I	819167.95	405931.22	30.84	28.43
SUMP-10	819037.61	405964.13	43.17		SWMH J	819157.47	405927.10	33.00	30.77
SUMP-11	819038.84	406016.73	44.02		SWMH K	819132.68	405917.28	35.45	33.20
SUMP-12	819081.91	406032.53	44.21		SWMH L	819106.98	405942.17	38.33	35.83
SUMP-13	819003.55	405900.15	44.18		SWMH M	819061.18	405903.19	42.29	39.68
SUMP-14	819144.30	405902.50	34.65		SWMH N	819073.99	405835.85	37.66	35.87
SUMP-15	819022.55	405843.26	40.76		SWMH O	819170.06	405922.19	33.07	30.55
					SWMH P	819173.34	405905.97	33.42	31.38
					SWMH Q	819168.23	405935.67	33.34	31.57
					SWMH R	819159.22	405972.40	34.05	31.87
					SWMH S	819118.55	405858.69	35.55	32.47
					SWMH T	819090.74	405971.35	37.05	34.14
					SWMH U	819073.99	405835.85	37.66	35.87
					SWMH V	819041.09	405809.40	37.76	36.37
					SWMH W	819029.02	405810.09	38.66	36.66

STORMWATER SUMP COORDINATE TABLE					STORMWATER MANHOLE COORDINATE TABLE				
SUMP No	mN	mE	LL		MH No	mN	mE	LL	IL
SUMP-1	819223.42	405944.68	24.53		SWMH A OUTLET	819324.83	405971.49	N/A	1.62
SUMP-2	819187.66	405940.66	27.29		SWMH B	819326.26	405964.14	3.29	1.81
SUMP-3	819100.67	405933.89	38.72		SWMH C	819321.23	405952.07	3.96	1.97
SUMP-4	819099.22	405940.81	38.69		SWMH D	819269.00	405941.41	15.75	1.99
SUMP-5	819040.58	405929.71	43.02		SWMH E	819253.68	405937.24	22.16	19.94
SUMP-6	819028.90	405926.08	43.02		SWMH F	819253.09	405943.62	24.48	2.46
SUMP-7	819025.31	405910.14	43.17		SWMH G	819224.28	405942.54	24.65	22.76
SUMP-8	819116.51	406109.87	44.67		SWMH H	819190.50	405939.36	27.16	25.06
SUMP-9	819035.55	405959.06	43.20		SWMH I	819167.95	405931.22	30.84	28.43
SUMP-10	819037.61	405964.13	43.17		SWMH J	819157.47	405927.10	33.00	30.77
SUMP-11	819038.84	406016.73	44.02		SWMH K	819132.68	405917.28	35.45	33.20
SUMP-12	819081.91	406032.53	44.21		SWMH L	819106.98	405942.17	38.33	35.83
SUMP-13	819003.55	405900.15	44.18		SWMH M	819061.18	405903.19	42.29	39.68
SUMP-14	819144.30	405902.50	34.65		SWMH N	819073.99	405835.85	37.66	35.87
SUMP-15	819022.55	405843.26	40.76		SWMH O	819170.06	405922.19	33.07	30.55
					SWMH P	819173.34	405905.97	33.42	31.38
					SWMH Q	819168.23	405935.67	33.34	31.57
					SWMH R	819159.22	405972.40	34.05	31.87
					SWMH S	819118.55	405858.69	35.55	32.47
					SWMH T	819090.74	405971.35	37.05	34.14
					SWMH U	819073.99	405835.85	37.66	35.87
					SWMH V	819041.09	405809.40	37.76	36.37
					SWMH W	819029.02	405810.09	38.66	36.66

AMENDMENT			NAME	DATE
A	SECONDARY OVERLAND FLOW PATHS ADDED		KML	02/14
B	CLEAN WATER PIPE REMOVED		KML	03/14

AMENDMENT			NAME	DATE
A	SECONDARY OVERLAND FLOW PATHS ADDED		KML	02/14
B	CLEAN WATER PIPE REMOVED		KML	03/14

AMENDMENT			NAME	DATE
A	SECONDARY OVERLAND FLOW PATHS ADDED		KML	02/14
B	CLEAN WATER PIPE REMOVED		KML	03/14

AMENDMENT			NAME	DATE
A	SECONDARY OVERLAND FLOW PATHS ADDED		KML	02/14
B	CLEAN WATER PIPE REMOVED		KML	03/14

AMENDMENT			NAME	DATE
A	SECONDARY OVERLAND FLOW PATHS ADDED		KML	02/14
B	CLEAN WATER PIPE REMOVED		KML	03/14

AMENDMENT			NAME	DATE
A	SECONDARY OVERLAND FLOW PATHS ADDED		KML	02/14
B	CLEAN WATER PIPE REMOVED		KML	03/14

AMENDMENT			NAME	DATE
A	SECONDARY OVERLAND FLOW PATHS ADDED		KML	02/14
B	CLEAN WATER PIPE REMOVED		KML	03/14

AMENDMENT			NAME	DATE
A	SECONDARY OVERLAND FLOW PATHS ADDED		KML	02/14
B	CLEAN WATER PIPE REMOVED		KML	03/14

AMENDMENT			NAME	DATE
A	SECONDARY OVERLAND FLOW PATHS ADDED		KML	02/14
B	CLEAN WATER PIPE REMOVED		KML	03/14

AMENDMENT			NAME	DATE
A	SECONDARY OVERLAND FLOW PATHS ADDED		KML	02/14
B	CLEAN WATER PIPE REMOVED		KML	03/14

AMENDMENT			NAME	DATE
A	SECONDARY OVERLAND FLOW PATHS ADDED		KML	02/14
B	CLEAN WATER PIPE REMOVED		KML	03/14

AMENDMENT			NAME	DATE
A	SECONDARY OVERLAND FLOW PATHS ADDED		KML	02/14
B	CLEAN WATER PIPE REMOVED		KML	03/14

AMENDMENT			NAME	DATE
A	SECONDARY OVERLAND FLOW PATHS ADDED		KML	02/14
B	CLEAN WATER PIPE REMOVED		KML	03/14

AMENDMENT			NAME	DATE
A	SECONDARY OVERLAND FLOW PATHS ADDED		KML	02/14
B	CLEAN WATER PIPE REMOVED		KML	03/14

AMENDMENT			NAME	DATE
A	SECONDARY OVERLAND FLOW PATHS ADDED		KML	02/14
B	CLEAN WATER PIPE REMOVED		KML	03/14

AMENDMENT			NAME	DATE
A	SECONDARY OVERLAND FLOW PATHS ADDED		KML	02/14
B	CLEAN WATER PIPE REMOVED		KML	03/14

AMENDMENT			NAME	DATE
A	SECONDARY OVERLAND FLOW PATHS ADDED		KML	02/14
B	CLEAN WATER PIPE REMOVED		KML	03/14

AMENDMENT			NAME	DATE
A	SECONDARY OVERLAND FLOW PATHS ADDED		KML	02/14
B	CLEAN WATER PIPE REMOVED		KML	03/14

AMENDMENT			NAME	DATE
A	SECONDARY OVERLAND FLOW PATHS ADDED		KML	02/14
B	CLEAN WATER PIPE REMOVED		KML	03/14

AMENDMENT			NAME	DATE
A	SECONDARY OVERLAND FLOW PATHS ADDED		KML	02/14
B	CLEAN WATER PIPE REMOVED		KML	03/14

AMENDMENT			NAME	DATE
A	SECONDARY OVERLAND FLOW PATHS ADDED		KML	02/14
B	CLEAN WATER PIPE REMOVED		KML	03/14

AMENDMENT			NAME	DATE
A	SECONDARY OVERLAND FLOW PATHS ADDED		KML	02/14
B	CLEAN WATER PIPE REMOVED		KML	03/14

AMENDMENT			NAME	DATE
A	SECONDARY OVERLAND FLOW PATHS ADDED		KML	02/14
B	CLEAN WATER PIPE REMOVED		KML	03/14

AMENDMENT			NAME	DATE
A	SECONDARY OVERLAND FLOW PATHS ADDED		KML	02/14
B	CLEAN WATER PIPE REMOVED		KML	03/14

AMENDMENT			NAME	DATE
A	SECONDARY OVERLAND FLOW PATHS ADDED		KML	02/14
B	CLEAN WATER PIPE REMOVED		KML	03/14

AMENDMENT			NAME	DATE
A	SECONDARY OVERLAND FLOW PATHS ADDED		KML	02/14
B	CLEAN WATER PIPE REMOVED		KML	03/14

AMENDMENT			NAME	DATE
A	SECONDARY OVERLAND FLOW PATHS ADDED		KML	02/14
B	CLEAN WATER PIPE REMOVED		KML	03/14

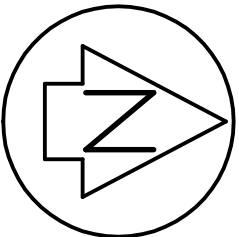
AMENDMENT			NAME	DATE
A	SECONDARY OVERLAND FLOW PATHS ADDED		KML	02/14
B	CLEAN WATER PIPE REMOVED		KML	03/14

AMENDMENT			NAME	DATE
A	SECONDARY OVERLAND FLOW PATHS ADDED		KML	02/14
B	CLEAN WATER PIPE REMOVED		KML	03/14

AMENDMENT			NAME	DATE
A	SECONDARY OVERLAND FLOW PATHS ADDED		KML	02/14
B	CLEAN WATER PIPE REMOVED		KML	03/14

AMENDMENT			NAME	DATE
A	SECONDARY OVERLAND FLOW PATHS ADDED		KML	02/14
B	CLEAN WATER PIPE REMOVED		KML	03/14

</



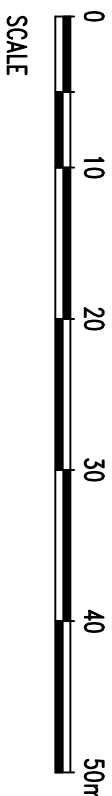
AMENDMENT		NAME	DATE
A	SECONDARY OVERLAND FLOW PATHS ADDED	KML	02/14
B	CLEAN WATER PIPE REMOVED	KML	03/14

LEGEND:

- BOUNDARY (STAGE 11A)
- BOUNDARY (FUTURE)
- SEWER
- EXISTING STORMWATER
- PROPOSED STORMWATER
- KEB OUTLET
- SECONDARY OVERLAND FLOW PATH
- SUMP

NOTES:

- ALL LEVELS ARE IN TERMS OF MEAN SEA LEVEL, WELLINGTON DATUM 1953.
- COORDINATES ARE IN TERMS OF NZGD 2000, WELLINGTON CIRCUIT.
- STAKES ARE PLACED AT THE TERMINATION POINT OF ALL PRIVATE STORMWATER CONNECTIONS.
- ALL ROAD SUMPS ARE TO PCC STANDARDS.
- PROPRIETARY GALVANISED DUCTILE IRON KERB ADAPTERS USED FOR SW CONNECTIONS TO KERB.
- MANHOLES:
 - ALL MANHOLES ARE PRECAST CONCRETE WITH WERGORE HEAVY DUTY CLASS D HINGED LID.
 - ALL MANHOLES ARE #1050 UNLESS SHOWN OTHERWISE.
- PIPE WORK:
 - ALL PRIVATE LATERALS ARE #100 uPVC SNI6.
 - ALL #225-#375 BOSS PIPE.
 - ALL >#375 ROPRI CLASS 2.
 - ALL SUMP LEADS #225 UNLESS SHOWN OTHERWISE.



SCALE

Cuttriss Consultants Limited
Hunt Valley, Wellington, Kapiti Coast



Lower Hutia Brand - Level 3, Onehouse, 82 Queens Drive, Lower Hutia
Postal Address: #70 Box 33, 423, Lower Hutia 5546
Telephone: (04) 559 6245 Fax: (04) 559 6248 Email: info@cuttriss.co.nz
Parapetum Branch - 23 Kapa Road, Parapetum
Postal Address: #70 Box 866, Parapetum 5554
Telephone: (04) 544 104 Fax: (04) 544 1042 Email: kapi@cuttriss.co.nz

Copyright of this drawing is vested in Cuttriss Consultants Limited

CLIENT

CARRUS LIMITED

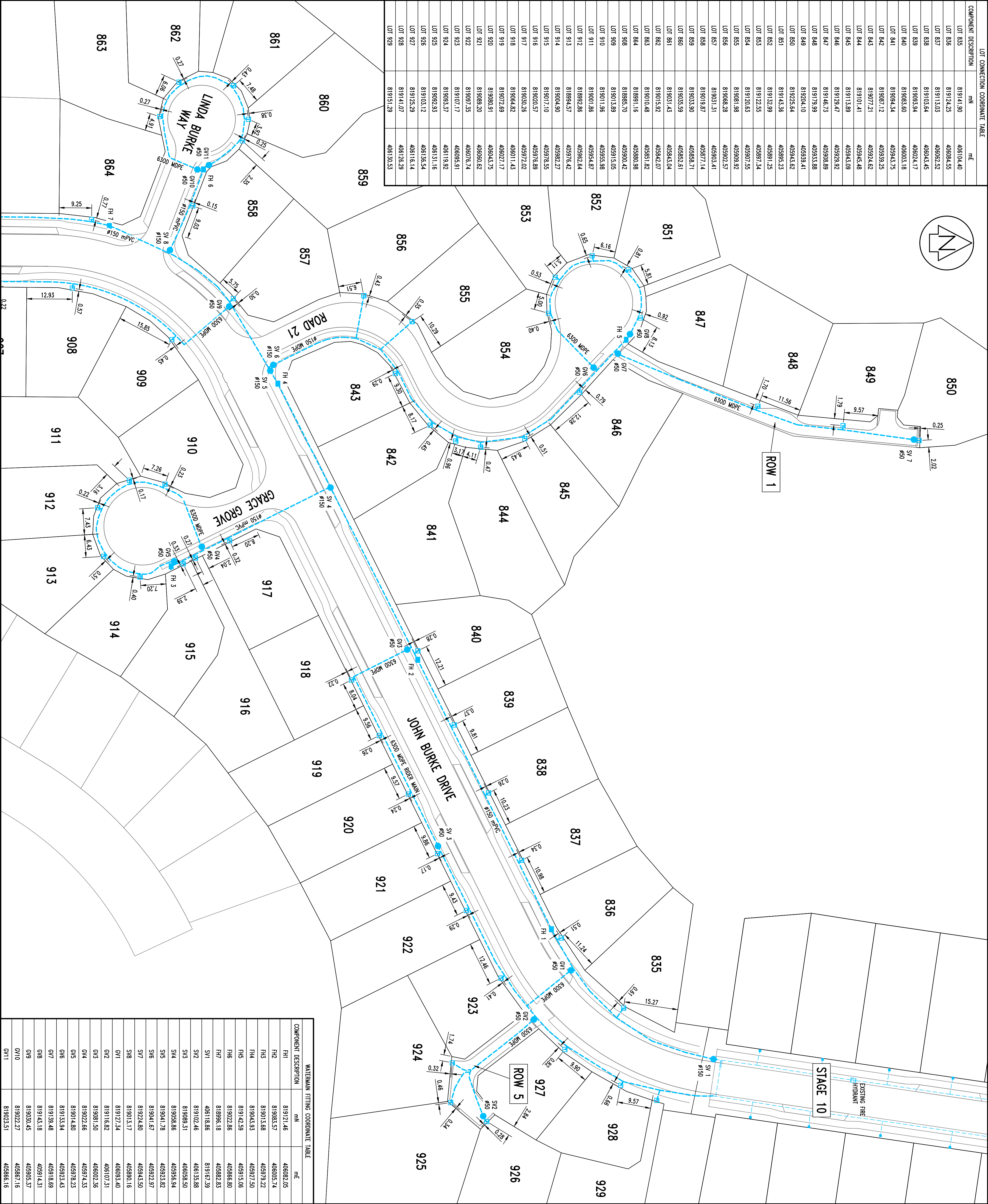
JOB

AOTEA
SUBDIVISION CIVIL WORKS
STAGE 11A

STORMWATER
ASBUILT PLAN
(SHEET 2 OF 2)

SCALE		SIZE	
1:500	(A3 1:1000)	A1	
NAME	DATE	DRAWING NUMBER	
FIELDWORK	KOC 12/13	27511ASB	
DESIGNED	RHH 03/13		
DRAWN	KML 12/13	SHEET 2	OF 2 SHEETS
CHECKED	KOC 02/14	REVISION	B

LOT CONNECTION COORDINATE TABLE		
COMPONENT DESCRIPTION	mN	mE
LOT 835	819141.90	406104.40
LOT 836	819174.25	406084.55
LOT 837	819113.03	406062.52
LOT 838	819103.64	406043.45
LOT 839	819093.94	406024.17
LOT 840	819083.60	406003.18
LOT 841	819094.34	405944.75
LOT 842	819090.12	405939.25
LOT 843	819077.21	405924.62
LOT 844	819101.41	405945.48
LOT 845	819113.89	405943.09
LOT 846	819129.47	405929.92
LOT 847	819146.73	405908.89
LOT 848	819179.99	405933.88
LOT 849	819204.10	405939.41
LOT 850	819225.64	405943.62
LOT 851	819143.36	405895.23
LOT 852	819132.99	405891.25
LOT 853	819122.55	405897.34
LOT 854	819120.53	405907.55
LOT 855	819081.98	405909.92
LOT 856	819068.28	405902.57
LOT 857	819031.31	405903.41
LOT 858	819019.87	405897.14
LOT 859	819033.90	405898.71
LOT 860	819035.59	405852.61
LOT 861	819031.43	405843.04
LOT 862	819015.92	405842.07
LOT 863	819010.48	405851.82
LOT 864	818991.16	405800.98
LOT 908	818985.70	405900.42
LOT 909	819013.89	405915.05
LOT 910	819011.96	405955.88
LOT 911	819001.66	405854.67
LOT 912	818992.86	405962.64
LOT 913	818994.57	405976.42
LOT 915	819017.10	405978.55
LOT 916	819020.57	405976.89
LOT 917	819030.26	405972.02
LOT 918	819064.82	406011.43
LOT 919	819072.89	406027.17
LOT 920	819080.91	406043.75
LOT 921	819097.35	406076.74
LOT 922	819107.17	406095.91
LOT 924	819093.37	406119.92
LOT 925	819092.93	406131.16
LOT 926	819103.12	406136.54
LOT 927	819125.29	406116.14
LOT 928	819141.07	406126.29
LOT 929	819151.29	406130.53



WATERMAIN FITTING COORDINATE TABLE		
COMPONENT DESCRIPTION	mN	mE
FH1	819121.46	406082.05
FH2	819083.57	406085.74
FH3	819013.68	405979.22
FH4	819043.93	405927.50
FH5	819142.59	405915.06
FH6	819022.86	405866.80
FH7	818996.18	405882.83
SV1	406118.66	819167.39
SV2	819102.46	406135.88
SV3	819089.31	406058.50
SV4	819058.86	405956.94
SV5	819041.78	405923.82
SV6	819041.67	405922.97
SV7	819224.80	405943.50
SV8	819013.17	405880.16
GV1	819127.34	406093.40
GV2	819116.82	406107.31
GV3	819081.50	406002.36
GV4	819022.66	405974.33
GV5	819014.80	405978.23
GV6	819133.94	405923.43
GV7	819139.48	405918.69
GV8	819143.18	405914.31
GV9	819030.46	405905.37
GV10	819022.27	405867.16
GV11	819023.51	405866.16

AMENDMENT

NAME

DATE

NOTES:

1. COORDINATES ARE IN TERMS OF NZGD 2000, WELLINGTON CIRCUIT.

2. ALL #150 & #100 MAINS ARE mPVC-PN12.

3. ALL RIDER MAINS ARE 630D MDPF-PN12.

4. ALL PRIVATE SERVICE CONNECTIONS ARE 250D MDPF-PN12 UNLESS SPECIFIED OTHERWISE.

5. MINIMUM COVER ON PIPES ARE AS FOLLOWS:
- MAINS #100mm AND GREATER 750mm COVER (ALL AREAS)
- RIDER MAINS 600mm COVER IN KERBS & 750mm COVER IN TRAFFICKED AREAS
- SERVICE PIPES 450mm COVER

6. ALL RESIDENTIAL SERVICE TOWERS ARE AQUILO MANIFOLDS WITH DOUBLE CHECK VALVES.

7. ALL HYDRANTS ARE TALL TREE HYDRANTS.

8. ALL #50 VALVES ARE TYPE ANY OR HAMLE EPOXY COATED DUCTILE IRON WITH A 2.07MPa RATING AND CONFORM TO AS2658:2011.

9. ALL #100 OR GREATER VALVES HAVE FLANGED JOINTS EPOXY COATED DUCTILE IRON WITH A 2.07MPa RATING TO CONFORM TO AS2658:2011.

10. #150, #100 & #50 VALVES HAVE WHITE CAST IRON COVER PAINTED WHITE WITH A MINIMUM OPENING OF 200mm SQUARE. VALVES ARE MARKED WITH 'V' ETCHED IN KERB.

11. FIRE HYDRANTS HAVE YELLOW PAINTED TRIANGLE AND BLUE CANS ETC ON ROAD. COVER PAINTED YELLOW.

LEGEND:

BOUNDARY

BOUNDARY (FUTURE)

EXISTING WATER

PROPOSED WATER

FIRE HYDRANT

VALVE

AQUILO MANIFOLD

CLIENT

CARRUS LIMITED

Copyright of this drawing is vested in Cuttriss Consultants Limited

Cuttriss

Land Surveyors, Engineers & Resource Managers

Hunt Valley Wellington, Kapiti Coast

Lower Hill House, Level 3, Court House, 82 Queens Drive, Lower Hill
Postal Address: PO Box 93, Lower Hill 5040
Telephone: (04) 559 8265 Fax: (04) 559 8248 Email: info@cuttriss.co.nz
Physical Address: c/o Box 866, Teaparamuna 5504
Telephone: (04) 559 8240 Fax: (04) 559 8242 Email: legal@cuttriss.co.nz

JOB

AOTEA SUBDIVISION CIVIL WORKS STAGE 11A

WATER ASBUILT PLAN (SHEET 1 OF 2)

SCALE

1:500 (A3 1:1000)

SIZE

A1

DRAWING NUMBER

275111ASB

FIELDWORK

KOC 12/13

DESIGNED

RHH 03/13

DRAWN

KML 12/13

CHECKED

KOC 02/14

SHEET

1

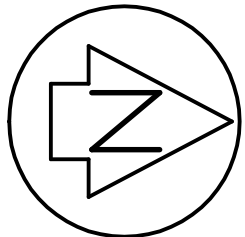
OF

2

SHEETS

REVISION

-



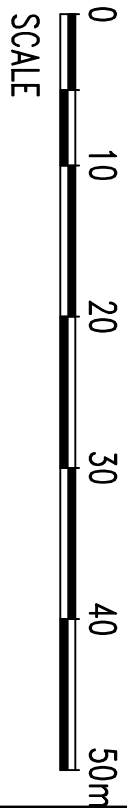
AMENDMENT	NAME	DATE

LEGEND:

- BOUNDARY
- BOUNDARY (FUTURE)
- EXISTING WATER
- PROPOSED WATER
- FIRE HYDRANT
- VALVE
- AQUILO MANIFOLD

NOTES:

- COORDINATES ARE IN TERMS OF NZGD 2000, WELLINGTON CIRCUIT.
- ALL #150 & #100 MANS ARE mPVC PN12.
- ALL RIDER MANS ARE 6300 MDPE-PN12.
- ALL PRIVATE SERVICE CONNECTIONS ARE 2500 MDPE-PN12 UNLESS SPECIFIED OTHERWISE.
- MINIMUM COVER ON PIPES ARE AS FOLLOWS:
 - MANS #100mm AND GREATER 750mm COVER (ALL AREAS)
 - RIDER MANS 800mm COVER IN KERNS & 750mm COVER IN TRAFFICKED AREAS
 - SERVICE PIPES 450mm COVER
- ALL RESIDENTIAL SERVICE TORIES ARE AQUILO MANIFOLDS WITH DOUBLE CHECK VALVES.
- ALL HYDRANTS ARE TALL TYPE HYDRANTS.
- ALL #60 VALVES ARE TYPE ANY OR HANDLE EPOXY COATED DUCTILE IRON WITH A 2.07MPa RATING AND CONFORM TO AS2658:2011.
- ALL #100 OR GREATER VALVES HAVE FLANGED JOINTS EPOXY COATED DUCTILE IRON WITH A 2.07MPa RATING TO CONFORM TO AS2658:2011.
- #150, #100 & #60 VALVES HAVE WHITE CAST IRON COVER PAINTED WHITE WITH A MINIMUM OPENING OF 200mm SQUARE. VALVES ARE MARKED WITH 'V' ETCHED IN KERB.
- FIRE HYDRANTS HAVE YELLOW PAINTED TRIANGLE AND BLUE CANS EYE ON ROAD. COVER PAINTED YELLOW.



SCALE

Cuttriss Consultants Limited
Hunt Valley, Wellington, Kapiti Coast

Cuttriss
Land Surveyors, Engineers & Resource Managers

Lower Hutt Branch: Level 3 Crest House, 87 Queens Drive, Lower Hutt
Postal Address: #70 Box 93, Lower Hutt 5146
Telephone (04) 559 6245 Fax (04) 559 6248 Email info@cuttriss.co.nz
Paraparaumu Branch: 23 Kipahi Road, Paraparaumu
Postal Address: #70 Box 866, Paraparaumu 5244
Telephone (04) 559 6249 Fax (04) 559 6242 Email kapiti@cuttriss.co.nz

Copyright of this drawing is vested in Cuttriss Consultants Limited

CLIENT

CARRUS LIMITED

JOB

**AOTEA
SUBDIVISION CIVIL WORKS
STAGE 11A**

**WATER
ASBUILT PLAN
(SHEET 2 OF 2)**

LOT CONNECTION COORDINATE TABLE			SCALE		SIZE	
COMPONENT DESCRIPTION	mN	mE	1:500	(A3 1:1000)	A1	
LOT 907	818962.82	405893.91	NAME	DATE	DRAWING NUMBER	
LOT 908	818965.70	405900.42	FIELDWORK	KOC 12/13	27511ASB	
WATER MAIN FITTING COORDINATE TABLE			DESIGNED	RHH 03/13		
GV12	818966.85	405873.89	DRAWN	KML 12/13	SHEET 2 OF 2 SHEETS	
GV13	818941.80	405880.77	CHECKED	KOC 02/14	REVISION -	