



Title Plan - DP 434377

Survey Number DP 434377
Surveyor Reference 1850-124961-15 Aotea Stage 9
Surveyor Brett William Horne
Survey Firm Harrison Grierson Consultants Ltd (Auckland)
Surveyor Declaration I Brett William Horne, being a licensed cadastral surveyor, certify that:
(a) this dataset provided by me and its related survey are accurate, correct and in accordance with the Cadastral Survey Act 2002 and the Rules for Cadastral Survey 2010, and
(b) the survey was undertaken by me or under my personal direction.
Declared on 11 Feb 2011 04:37 PM

Survey Details

Dataset Description Lots 250-254, 300-303, 310 & 750-796 being a subdivision of Lot 1 DP 334483, Lot 1 DP 405897 & Lot 202 DP 425357 and easement over Lot 3 DP 328361

Status Deposited

Land District Wellington **Survey Class** Class A

Submitted Date 11/02/2011 **Survey Approval Date** 01/03/2011

Deposit Date 08/04/2011

Territorial Authorities

Porirua City

Comprised In

CT 304459
CT 420618
CT 500079
CT 252958

Created Parcels

Parcels	Parcel Intent	Area	CT Reference
Area GJ Deposited Plan 434377	Land Covenant		
Lot 250 Deposited Plan 434377	Fee Simple Title	3.0897 Ha	529955
Lot 251 Deposited Plan 434377	Fee Simple Title	11.9674 Ha	529956
Lot 252 Deposited Plan 434377	Fee Simple Title	37.7282 Ha	529957
Lot 253 Deposited Plan 434377	Fee Simple Title	66.2748 Ha	529958
Lot 254 Deposited Plan 434377	Fee Simple Title	2.0778 Ha	529959
	Road	1.2903 Ha	
	Road	0.3157 Ha	
	Road	0.4312 Ha	
	Road	0.1648 Ha	
Lot 310 Deposited Plan 434377	Fee Simple Title	0.0211 Ha	Multiple
Lot 750 Deposited Plan 434377	Fee Simple Title	0.0682 Ha	529960
Lot 751 Deposited Plan 434377	Fee Simple Title	0.0608 Ha	529961



Title Plan - DP 434377

Created Parcels

Parcels	Parcel Intent	Area	CT Reference
Lot 752 Deposited Plan 434377	Fee Simple Title	0.0622 Ha	529962
Lot 753 Deposited Plan 434377	Fee Simple Title	0.0619 Ha	529963
Lot 754 Deposited Plan 434377	Fee Simple Title	0.0727 Ha	529964
Lot 755 Deposited Plan 434377	Fee Simple Title	0.0632 Ha	529965
Lot 756 Deposited Plan 434377	Fee Simple Title	0.0602 Ha	529966
Lot 757 Deposited Plan 434377	Fee Simple Title	0.0631 Ha	529967
Lot 758 Deposited Plan 434377	Fee Simple Title	0.0722 Ha	529968
Lot 759 Deposited Plan 434377	Fee Simple Title	0.0679 Ha	529969
Lot 760 Deposited Plan 434377	Fee Simple Title	0.0626 Ha	529970
Lot 761 Deposited Plan 434377	Fee Simple Title	0.0664 Ha	529971
Lot 762 Deposited Plan 434377	Fee Simple Title	0.0626 Ha	529972
Lot 763 Deposited Plan 434377	Fee Simple Title	0.0615 Ha	529973
Lot 764 Deposited Plan 434377	Fee Simple Title	0.0638 Ha	529974
Lot 765 Deposited Plan 434377	Fee Simple Title	0.0628 Ha	529975
Lot 766 Deposited Plan 434377	Fee Simple Title	0.0638 Ha	529976
Lot 767 Deposited Plan 434377	Fee Simple Title	0.0638 Ha	529977
Lot 768 Deposited Plan 434377	Fee Simple Title	0.0623 Ha	529978
Lot 769 Deposited Plan 434377	Fee Simple Title	0.0649 Ha	529979
Lot 770 Deposited Plan 434377	Fee Simple Title	0.0618 Ha	529980
Lot 771 Deposited Plan 434377	Fee Simple Title	0.0639 Ha	529981
Lot 772 Deposited Plan 434377	Fee Simple Title	0.0634 Ha	529982
Lot 773 Deposited Plan 434377	Fee Simple Title	0.0634 Ha	529983
Lot 774 Deposited Plan 434377	Fee Simple Title	0.0637 Ha	529984
Lot 775 Deposited Plan 434377	Fee Simple Title	0.0612 Ha	529985
Lot 776 Deposited Plan 434377	Fee Simple Title	0.0627 Ha	529986
Lot 777 Deposited Plan 434377	Fee Simple Title	0.0628 Ha	529987
Lot 778 Deposited Plan 434377	Fee Simple Title	0.0597 Ha	529988
Lot 779 Deposited Plan 434377	Fee Simple Title	0.0604 Ha	529989
Lot 780 Deposited Plan 434377	Fee Simple Title	0.0635 Ha	529990
Lot 781 Deposited Plan 434377	Fee Simple Title	0.0639 Ha	529991
Lot 782 Deposited Plan 434377	Fee Simple Title	0.0600 Ha	529992
Lot 783 Deposited Plan 434377	Fee Simple Title	0.0645 Ha	529993
Lot 784 Deposited Plan 434377	Fee Simple Title	0.0631 Ha	529994
Lot 785 Deposited Plan 434377	Fee Simple Title	0.0606 Ha	529995
Lot 786 Deposited Plan 434377	Fee Simple Title	0.0606 Ha	529996
Lot 787 Deposited Plan 434377	Fee Simple Title	0.0604 Ha	529997
Lot 788 Deposited Plan 434377	Fee Simple Title	0.0639 Ha	529998
Lot 789 Deposited Plan 434377	Fee Simple Title	0.0635 Ha	529999
Lot 790 Deposited Plan 434377	Fee Simple Title	0.0635 Ha	530000
Lot 791 Deposited Plan 434377	Fee Simple Title	0.0664 Ha	530001



Title Plan - DP 434377

Created Parcels

Parcels	Parcel Intent	Area	CT Reference
Lot 792 Deposited Plan 434377	Fee Simple Title	0.0632 Ha	530002
Lot 793 Deposited Plan 434377	Fee Simple Title	0.0636 Ha	530003
Lot 794 Deposited Plan 434377	Fee Simple Title	0.0668 Ha	530004
Lot 795 Deposited Plan 434377	Fee Simple Title	0.0675 Ha	530005
Lot 796 Deposited Plan 434377	Fee Simple Title	0.0654 Ha	530006
Part Section 286 Porirua District	Fee Simple Title	0.5419 Ha	
Area AY Deposited Plan 434377	Easement		
Area KA Deposited Plan 434377	Easement		
Area AZ Deposited Plan 434377	Easement		
Area DA Deposited Plan 434377	Easement		
Area DC Deposited Plan 434377	Easement		
Area DD Deposited Plan 434377	Easement		
Area DE Deposited Plan 434377	Easement		
Area DF Deposited Plan 434377	Easement		
Area DG Deposited Plan 434377	Easement		
Area DH Deposited Plan 434377	Easement		
Area DI Deposited Plan 434377	Easement		
Area DJ Deposited Plan 434377	Easement		
Area DK Deposited Plan 434377	Easement		
Area DM Deposited Plan 434377	Easement		
Area DN Deposited Plan 434377	Easement		
Area DO Deposited Plan 434377	Easement		
Area DP Deposited Plan 434377	Easement		
Area DQ Deposited Plan 434377	Easement		
Area DR Deposited Plan 434377	Easement		
Area DS Deposited Plan 434377	Easement		
Area DT Deposited Plan 434377	Easement		
Area DU Deposited Plan 434377	Easement		
Area DV Deposited Plan 434377	Easement		
Area DW Deposited Plan 434377	Easement		
Area DX Deposited Plan 434377	Easement		
Area DY Deposited Plan 434377	Easement		
Area DZ Deposited Plan 434377	Easement		
Area FA Deposited Plan 434377	Land Covenant		
Area FB Deposited Plan 434377	Land Covenant		
Area FC Deposited Plan 434377	Land Covenant		
Area FD Deposited Plan 434377	Land Covenant		
Area FE Deposited Plan 434377	Land Covenant		
Area FF Deposited Plan 434377	Land Covenant		
Area FG Deposited Plan 434377	Land Covenant		



Title Plan - DP 434377

Created Parcels

Parcels	Parcel Intent	Area	CT Reference
Area FH Deposited Plan 434377	Land Covenant		
Area FI Deposited Plan 434377	Land Covenant		
Area FJ Deposited Plan 434377	Land Covenant		
Area FK Deposited Plan 434377	Land Covenant		
Area FL Deposited Plan 434377	Land Covenant		
Area FM Deposited Plan 434377	Land Covenant		
Area FN Deposited Plan 434377	Land Covenant		
Area FO Deposited Plan 434377	Land Covenant		
Area FP Deposited Plan 434377	Land Covenant		
Area FQ Deposited Plan 434377	Land Covenant		
Area FR Deposited Plan 434377	Land Covenant		
Area FS Deposited Plan 434377	Land Covenant		
Area FT Deposited Plan 434377	Land Covenant		
Area FU Deposited Plan 434377	Land Covenant		
Area FV Deposited Plan 434377	Land Covenant		
Area FW Deposited Plan 434377	Land Covenant		
Area FX Deposited Plan 434377	Land Covenant		
Area FY Deposited Plan 434377	Land Covenant		
Area FZ Deposited Plan 434377	Land Covenant		
Area GA Deposited Plan 434377	Land Covenant		
Area GB Deposited Plan 434377	Land Covenant		
Area GC Deposited Plan 434377	Land Covenant		
Area GD Deposited Plan 434377	Land Covenant		
Area GE Deposited Plan 434377	Land Covenant		
Area GF Deposited Plan 434377	Land Covenant		
Area GG Deposited Plan 434377	Land Covenant		
Area GH Deposited Plan 434377	Land Covenant		
Area GI Deposited Plan 434377	Land Covenant		
Area RA Deposited Plan 434377	Easement		
Area RB Deposited Plan 434377	Easement		
Area WF Deposited Plan 434377	Easement		
Area WG Deposited Plan 434377	Easement		
Area WH Deposited Plan 434377	Easement		
Area Q Deposited Plan 434377	Easement		
Area R Deposited Plan 434377	Easement		
Area S Deposited Plan 434377	Easement		
Area T Deposited Plan 434377	Easement		
Area AL Deposited Plan 434377	Easement		
Area AM Deposited Plan 434377	Easement		
Area AN Deposited Plan 434377	Easement		



Title Plan - DP 434377

Created Parcels

Parcels	Parcel Intent	Area	CT Reference
Area AO Deposited Plan 434377	Easement		
Area AP Deposited Plan 434377	Easement		
Area AR Deposited Plan 434377	Easement		
Area AT Deposited Plan 434377	Easement		
Area KB Deposited Plan 434377	Easement		
Area BQ Deposited Plan 434377	Easement		
Area BR Deposited Plan 434377	Easement		
Area BP Deposited Plan 434377	Easement		
Area BT Deposited Plan 434377	Easement		
Area BU Deposited Plan 434377	Easement		
Area BV Deposited Plan 434377	Easement		
Area BW Deposited Plan 434377	Easement		
Area BX Deposited Plan 434377	Easement		
Area BY Deposited Plan 434377	Easement		
Area BZ Deposited Plan 434377	Easement		
Area BS Deposited Plan 434377	Easement		
Area YA Deposited Plan 434377	Easement		
Area YH Deposited Plan 434377	Easement		
Area YI Deposited Plan 434377	Easement		
Area ZC Deposited Plan 434377	Easement		
Area ZF Deposited Plan 434377	Easement		
Area ZG Deposited Plan 434377	Easement		
Area ZH Deposited Plan 434377	Easement		
Area ZI Deposited Plan 434377	Easement		
Area EA Deposited Plan 434377	Easement		
Area EB Deposited Plan 434377	Easement		
Area EC Deposited Plan 434377	Easement		
Area WA Deposited Plan 434377	Easement		
Area WB Deposited Plan 434377	Easement		
Area WC Deposited Plan 434377	Easement		
Area WD Deposited Plan 434377	Easement		
Area WE Deposited Plan 434377	Easement		
Area BO Deposited Plan 434377	Easement		
Area DB Deposited Plan 434377	Easement		
Total Area		126.8932 Ha	

Land Registration District

Wellington

Plan Number

DP 434377

Territorial Authority

Porirua City Council

Memorandum of Easements

Purpose	Shown	Servient Tenement	Dominant Tenement
Right of Way Right to convey water, electricity, gas, telecommunications and computer media	RA	Lot 310 hereon	Lots 778, 779 & 780 hereon

Memorandum of Easements in Gross

Purpose	Shown	Servient Tenement	Grantee
Right of Way	RB	Lot 252 hereon	Porirua City Council
Right to convey water	WF, WG	Lot 796 hereon	
	DT, WH	Lot 252 hereon	
	WF, WG	Lot 796 hereon	Wellington Regional Council
	DT, WH	Lot 252 hereon	
	KA	Lot 253 hereon	Porirua City Council
	KB		
Right to drain sewage and water	DC, DD	Lot 759 hereon	Porirua City Council
	DE, DF	Lot 769 hereon	
	DG, DH	Lot 770 hereon	
	DP, DQ	Lot 778 hereon	
	DM	Lot 779 hereon	
	DR	Lot 783 hereon	
	DN, DT, DU, DX	Lot 252 hereon	
	RA	Lot 310 hereon	

Memorandum of Easements in Gross			
Purpose	Shown	Servient Tenement	Grantee
Right to drain sewage	DW	Lot 770 hereon	Porirua City Council
	DJ, DK	Lot 772 hereon	
	DY	Lot 254 hereon	
Right to drain water	DA	Lot 3 DP 328361	
	DI, DV	Lot 252 hereon	
	DZ	Lot 254 hereon	
Right to convey electricity	EB	Lot 251 hereon	WEL Networks Limited
	EC	Lot 254 hereon	
	WB	Lot 251 hereon	
	WC	Lot 254 hereon	
Right to convey telecommunications and computer media	EB	Lot 251 hereon	Telecom New Zealand Limited
	EC	Lot 254 hereon	
	WB	Lot 251 hereon	
	WC	Lot 254 hereon	
Right to convey water	WB	Lot 251 hereon	Wellington Regional Council
	WC	Lot 254 hereon	
	WD	Lot 251 hereon	
	WE	Lot 254 hereon	

Memorandum of Easements			
Purpose	Shown	Servient Tenement	Dominant Tenement
Right to drain sewage and water	DO	Lot 779 hereon	Lot 780 hereon
	DS	Lot 783 hereon	Lot 795 hereon
	DB	Lot 781 hereon	Lot 782 hereon

Schedule of Proposed Easements in Gross			
Purpose	Shown	Servient Tenement	Grantee
Right to convey electricity	KA, AY, AZ	Lot 253 hereon	Wellington Electricity Lines Limited

Schedule of Existing Easements in Gross				
Purpose	Shown	Servient Tenement	Grantee	Creating document
Right to drain sewage	AL AL on DP 334483	Lot 253 hereon	Porirua City Council	B686066.3
	AM AM on DP 334483			
	AN AN on DP 334483			
	BT BT on DP 334483			
	BU BU on DP 334483			
	BV BV on DP 334483			
	BW BW on DP 334483			
	BX BX on DP 334483			
	R R on DP 334483			
Right to convey water	AN AN on DP 334483	Lot 253 hereon	Porirua City Council	B686066.3
	AO AO on DP 334483			
	AP AP on DP 334483			
	AR AR on DP 334483			
	AT AT on DP 334483	Lot 253 hereon	Porirua City Council	B612516.1
T T on DP 334483				

Schedule of Existing Easements in Gross				
Purpose	Shown	Servient Tenement	Grantee	Creating document
Right to drain water	AT AT on DP 334483	Lot 253 hereon	Porirua City Council	B686066.3
	BO BO on DP 334483			
	BP BS on DP 334483			
	BQ BQ on DP 334483			
	BR BR on DP 334483			
	BT BT on DP 334483			
	BU BU on DP 334483			
	BV BV on DP 334483			
	BW BW on DP 334483			
	BX BX on DP 334483			
	BY BY on DP 334483			
	BZ BZ on DP 334483			
R R on DP 334483				
Right to convey electricity	Q Q on DP 334483	Lot 253 hereon	Vector Limited	B353754.1
	R R on DP 334483			
	S S on DP 334483			
Right to convey water	ZF ZF on DP 405897	Lot 252 hereon	Porirua City Council	B686066.3
	ZG ZG on DP 405897			
Right to drain sewage	ZH ZH on DP 405897			
	ZI ZI on DP 405897			

Schedule of Existing Easements in Gross				
Purpose	Shown	Servient Tenement	Grantee	Creating document
Right to drain water	YA YA on DP 405897	Lot 250 hereon	Porirua City Council	EI 7843659.10
	ZC ZC on DP 405897	Lot 252 hereon		B686066.3
Right to drain sewage and water	YH YH on DP 405897	Lot 250 hereon		EI 7450962.10
Right to convey electricity	EA E1 on DP 425357	Lot 251 hereon	WEL Networks Limited	8371124.16
Right to convey telecommunications and computer media			Telecom New Zealand Limited	8371124.17
Right to convey water			WA W1 on DP 425357	Wellington Regional Council

Schedule of Existing Easements in Gross				
Purpose	Shown	Servient Tenement	Grantee	Creating document
Right to drain water	BS BS on DP 405897	Lot 250 hereon	Porirua City Council	7863956.13

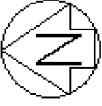
Schedule of Existing Easements				
Purpose	Shown	Servient Tenement	Creating document	
Right to drain sewage and water	YI YI on DP 405897	Lot 250 hereon	EI 7843659.11	

Schedule of Existing Easements in Gross to be Surrendered				
Purpose	Shown	Servient Tenement	Grantee	Creating document
Right to convey electricity	AW, AY, AZ on DP 334483	Lot 1 DP 334483	Vector Limited	B686066.2
Right to convey water	AU, AW, AX on DP 334483		Porirua City Council	B686066.3
Right of Way	ZA, ZD, ZJ on DP 405897	Lot 1 DP 405897	Porirua City Council	T861524.1
	ZA on DP 425357	Lot 202 DP 425357		
Right to convey water	ZE on DP 405897	Lot 1 DP 405897	Wellington Regional Council	B557646.1
	ZJ on DP 405897			T861524.2

Schedule of Existing Easements in Gross to be Surrendered				
Purpose	Shown	Servient Tenement	Grantee	Creating document
Right to convey electricity	E2 on DP 425357	Lot 202 DP 425357	WEL Networks Limited	8371124.16
	W2 on DP 425357			
Right to convey telecommunications and computer media	E2 on DP 425357	Lot 202 DP 425357	Telecom New Zealand Limited	8371124.17
	W2 on DP 425357			
Right to convey water	W2 on DP 425357	Lot 202 DP 425357	Wellington Regional Council	8371124.14
	W3 on DP 425357			
Right to drain sewage and water	YH on DP 405897	Lot 1 DP 405897	Porirua City Council	7450962.9

Schedule of Existing Easements to be Surrendered			
Purpose	Shown	Servient Tenement	Creating document
Right to convey electricity	CG on DP 334483	Lot 1 DP 334483	B604095.2

N:\1850\124961_12\400 Tech\LT survey\Stage 9 Easements 2010-12-09.doc



T 1/15

Title Plan
DP 434377

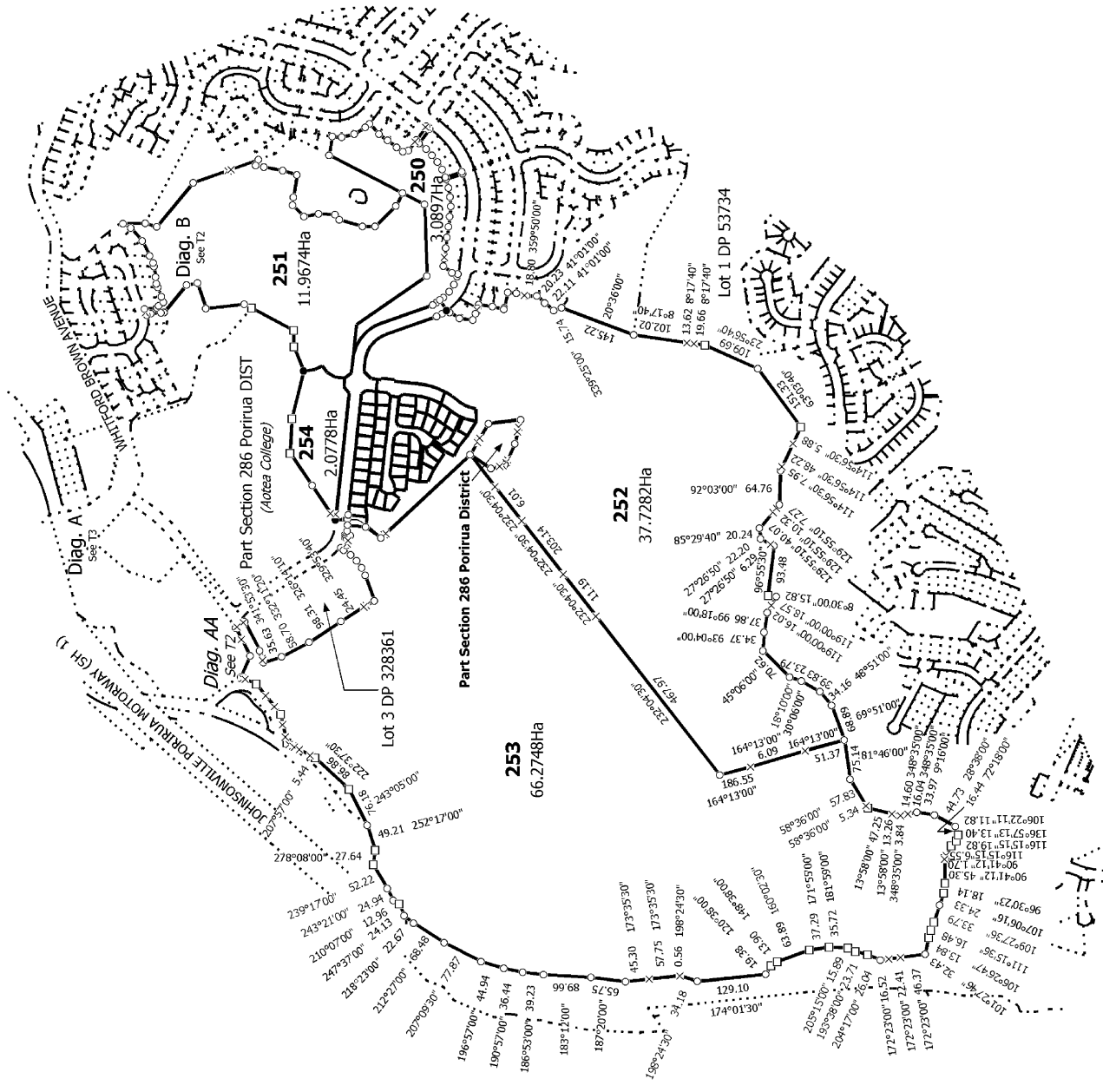
Deposited on: 8/04/2011

Surveyor: Brett William Horne
Firm: Harrison Grierson Consultants Ltd (A.)

Lots 250-254, 300-303, 310 & 750-796 being a subdivision of Lot 1 DP 334483,
Lot 1 DP 405897 & Lot 202 DP 425357 and easement over Lot 3 DP 328361

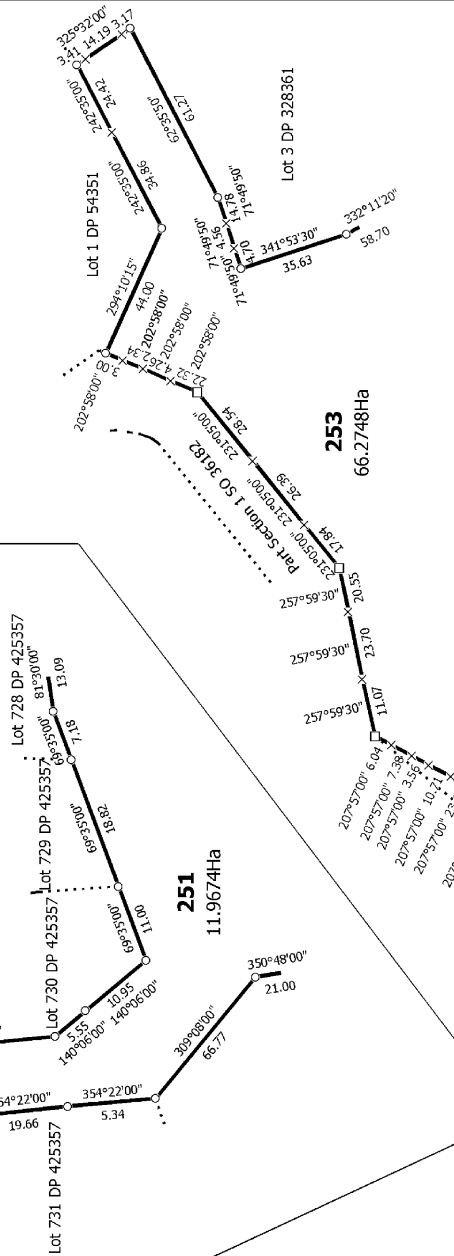
Land District: Wellington

Digitally Generated Plan
Generated on: 27/04/2011 2:11pm Page 12 of 26

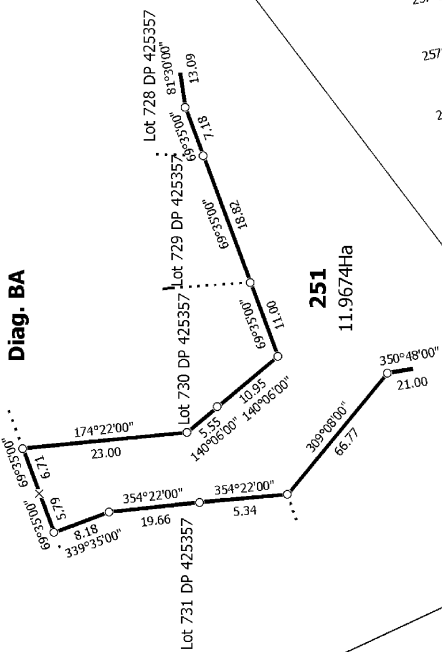




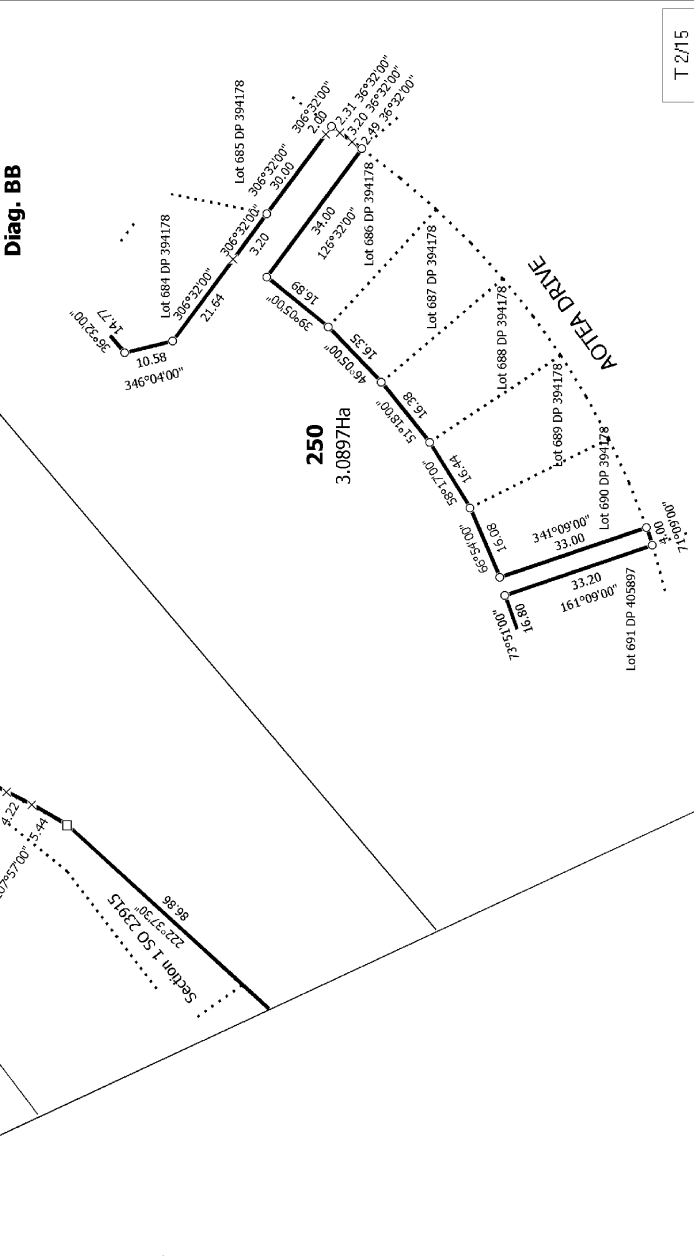
Diag. AA



Diag. BA

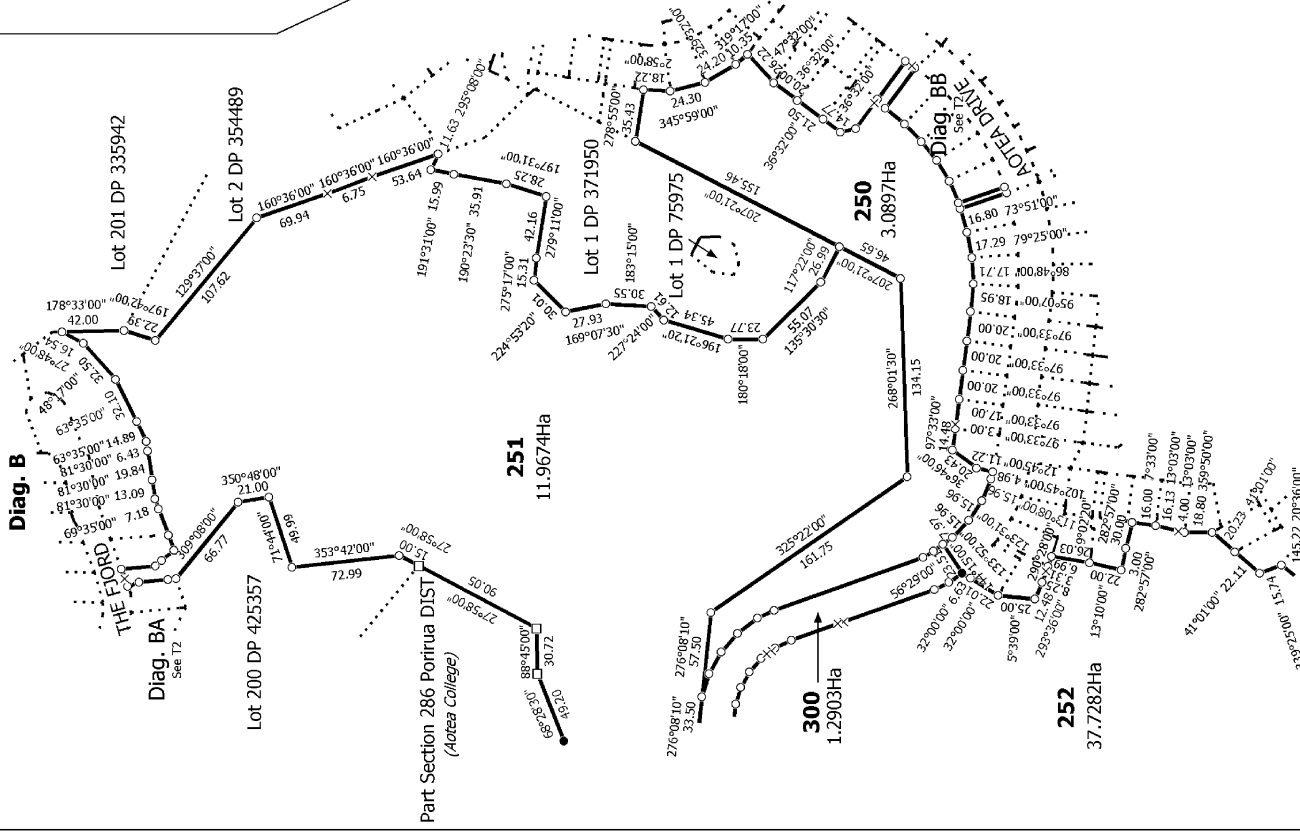


Diag. BB

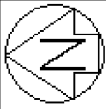


T 2/15

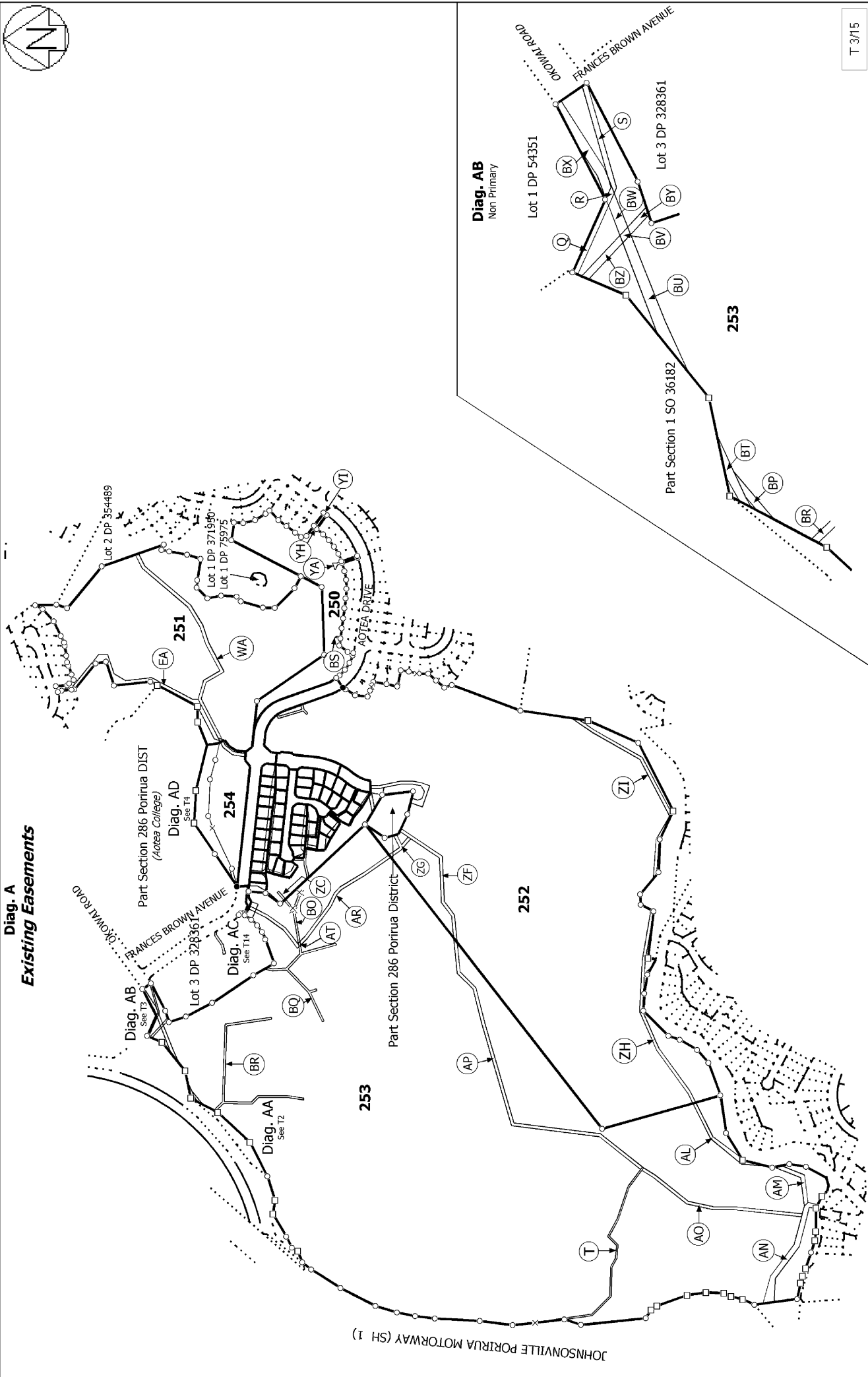
Diag. B



Land District: Wellington	Surveyor: Brett William Horne Firm: Harrison Grierson Consultants Ltd (A)	Title Plan DP 434377
Deposited on: 27/04/2011 2:11pm Page 13 of 26 Digitally Generated Plan Lot 250-254, 300-303, 310 & 750-796 being a subdivision of Lot 1 DP 334483, Lot 1 DP 405897 & Lot 202 DP 425357 and easement over Lot 3 DP 328361 Deposited on: 8/04/2011		



Diag. A
Existing Easements



T 3/15

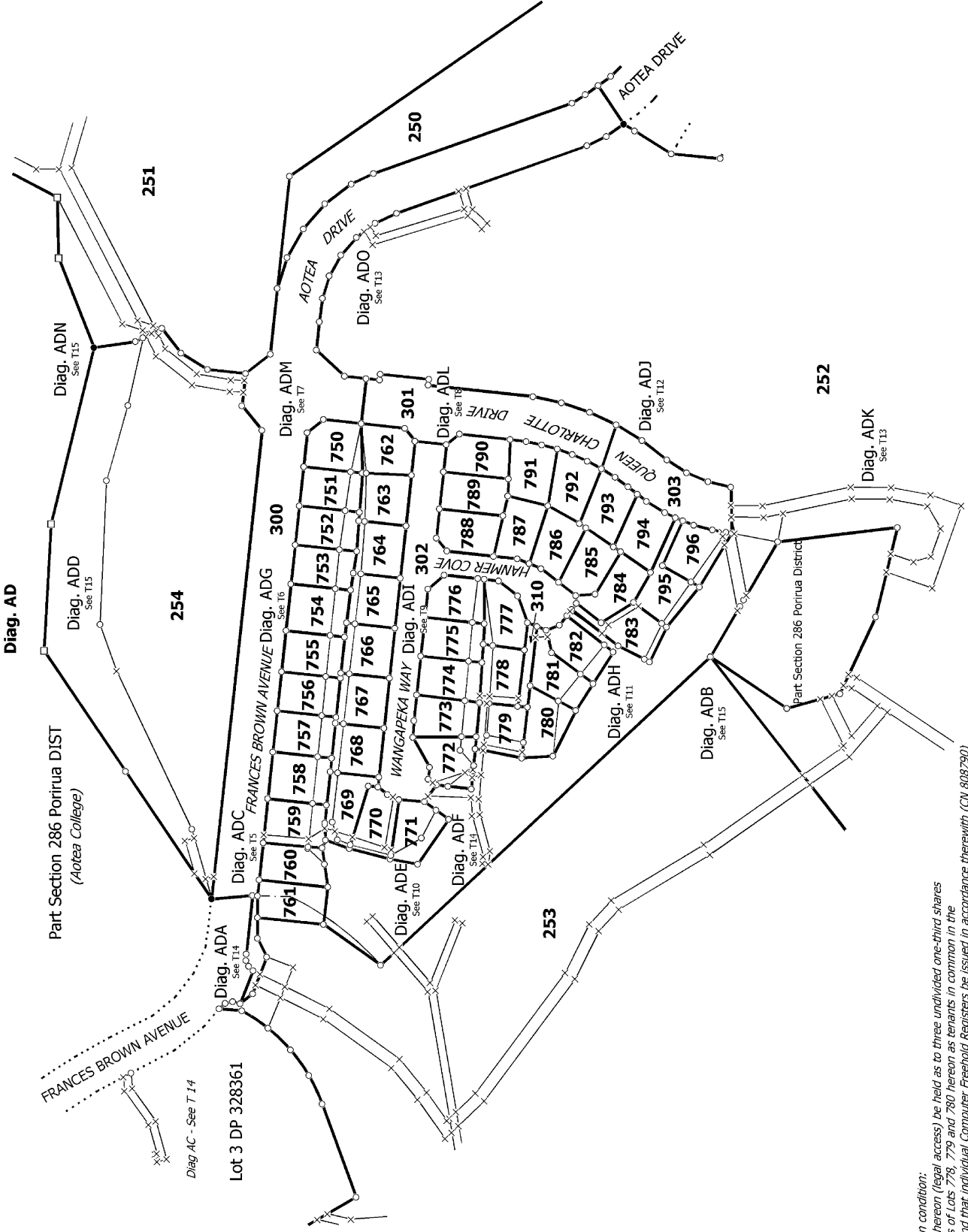
Title Plan
DP 434377

Surveyor: Brett William Horne
 Firm: Harrison Grierson Consultants Ltd (A/L)

Lots 250-254, 300-303, 310 & 750-796 being a subdivision of Lot 1 DP 334483, Lot 1 DP 405897 & Lot 202 DP 425357 and easement over Lot 3 DP 328361

Land District: Wellington
 Digitally Generated Plan
 Generated on: 27/04/2011 2:11pm Page 14 of 26

Deposited on: 8/04/2011



*Antisegregation condition:
That Lot 310 hereon (legal access) be held as to three undivided one-third shares
by the owners of Lots 778, 779 and 780 hereon as tenants in common in the
said shares and that individual Computer Freehold Registers be issued in accordance therewith (CN 808790)*

T 4/15

Land District: Wellington

Digitally Generated Plan
Generated on: 27/04/2011 2:11pm Page 15 of 26

Lots 250-254, 300-303, 310 & 750-796 being a subdivision of Lot 1 DP 334483,
Lot 1 DP 405897 & Lot 202 DP 425357 and easement over Lot 3 DP 328361

Surveyor: Brett William Horne
Firm: Harrison Grierson Consultants Ltd (A.)

Title Plan
DP 434377

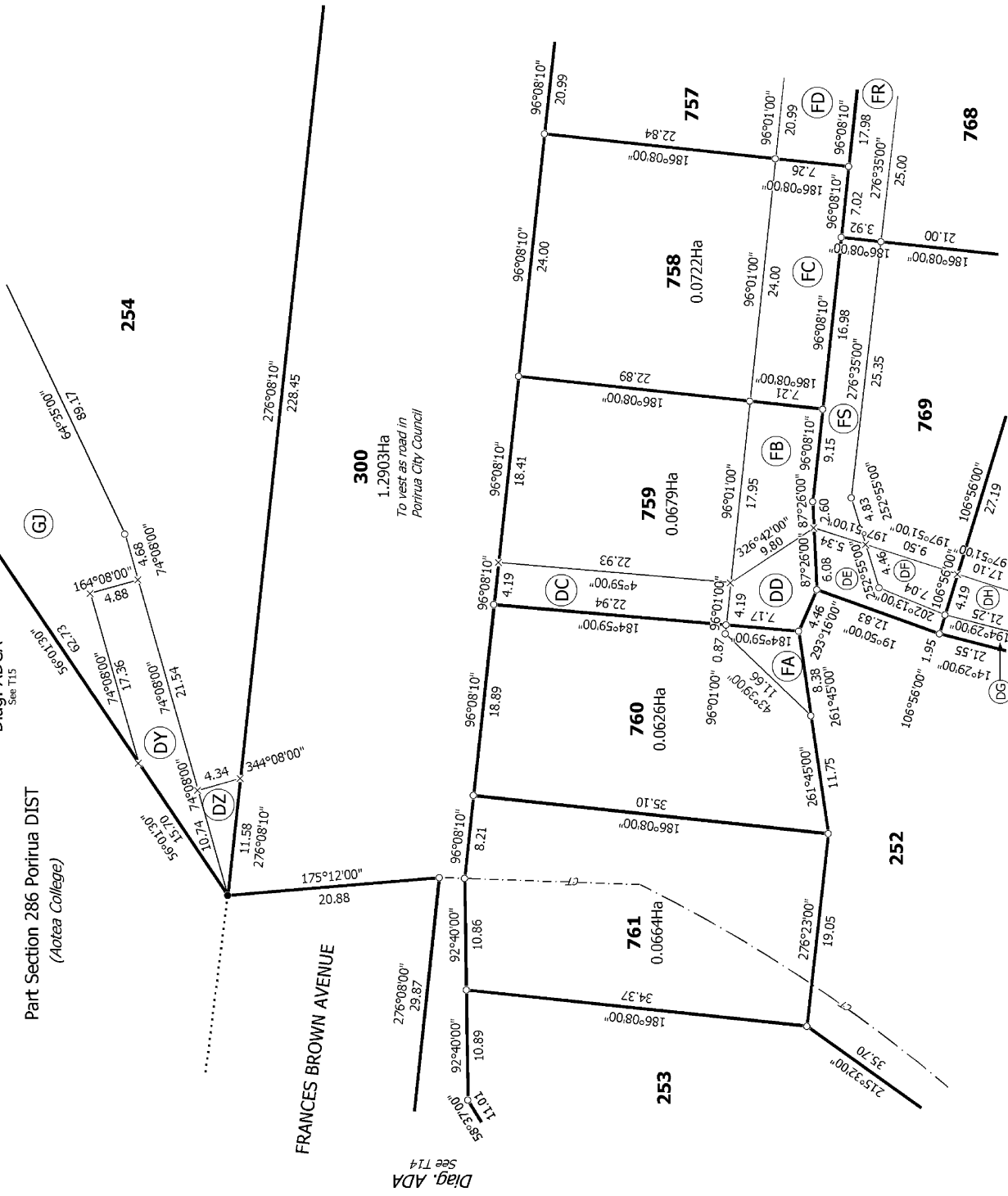
Deposited on: 8/04/2011



Diag. ADC

Diag. ADCA
See T15

Part Section 286 Porirua DIST
(Aotea College)



T 5/15

Land District: Wellington

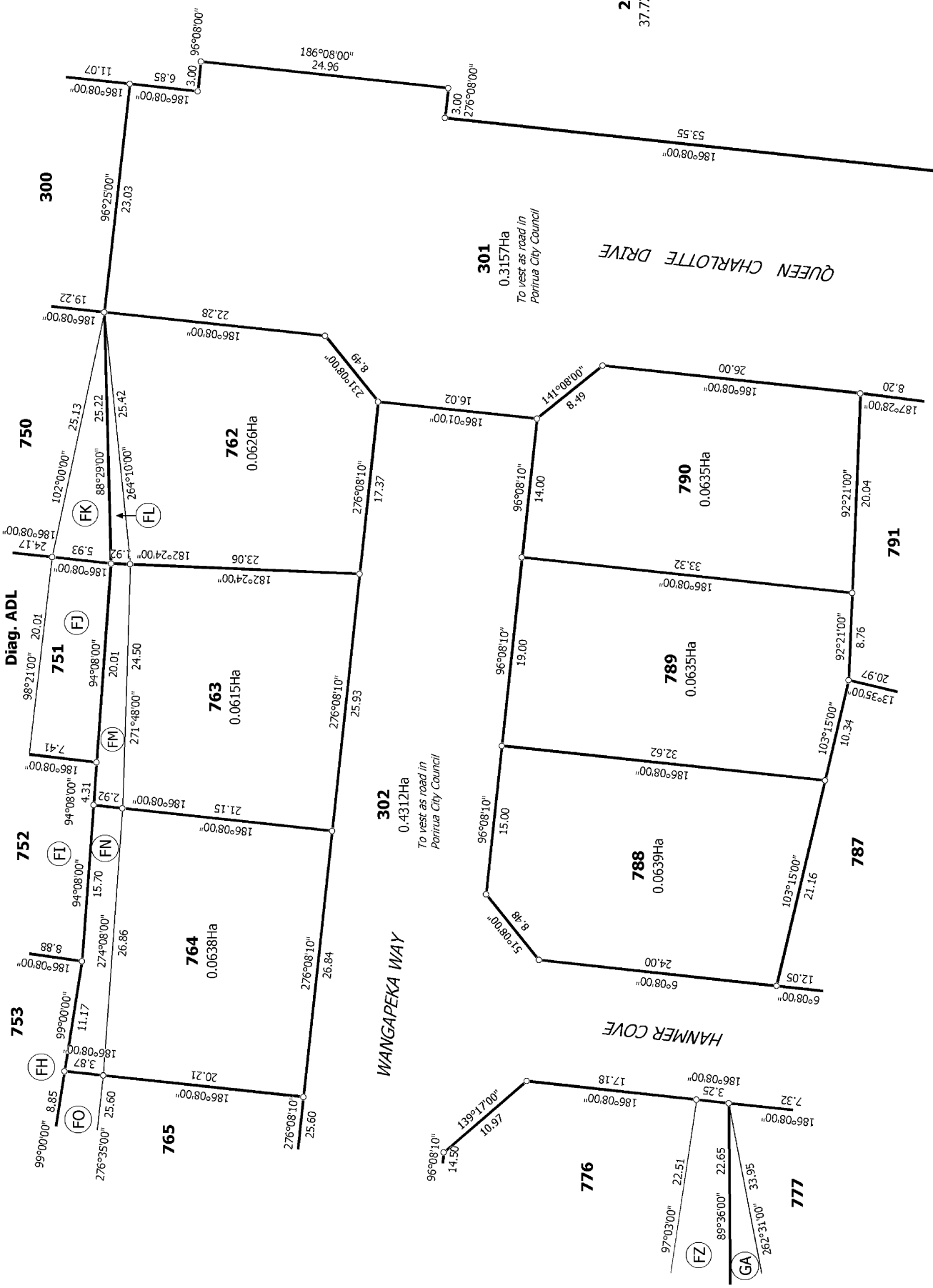
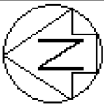
Digitally Generated Plan
Generated on: 27/04/2011 2:11pm Page 16 of 26

Lots 250-254, 300-303, 310 & 750-796 being a subdivision of Lot 1 DP 334483,
Lot 1 DP 405897 & Lot 202 DP 425357 and easement over Lot 3 DP 328361

Surveyor: Brett William Horne
Firm: Harrison Grierson Consultants Ltd (A.)

Title Plan
DP 434377

Deposited on: 8/04/2011



T 8/15

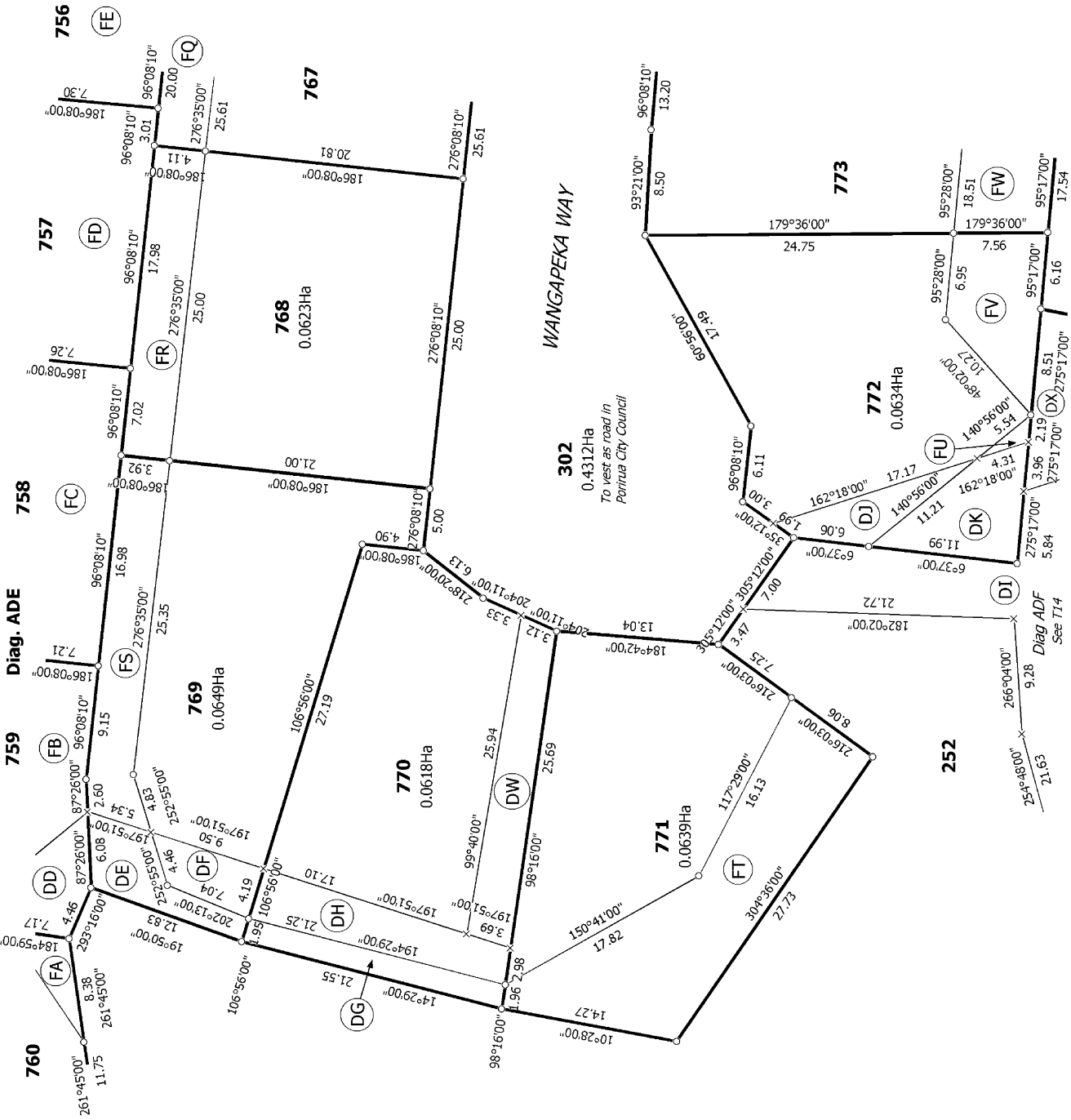
Title Plan
DP 434377

Surveyor: Brett William Horne
 Firm: Harrison Grierson Consultants Ltd (A)

**Lots 250-254, 300-303, 310 & 750-796 being a subdivision of Lot 1 DP 334483,
 Lot 1 DP 405897 & Lot 202 DP 425357 and easement over Lot 3 DP 328361**

Land District: Wellington
 Digitally Generated Plan
 Generated on: 27/04/2011 2:11pm Page 19 of 26

Deposited on: 8/04/2011



T 10/15

Land District: Wellington

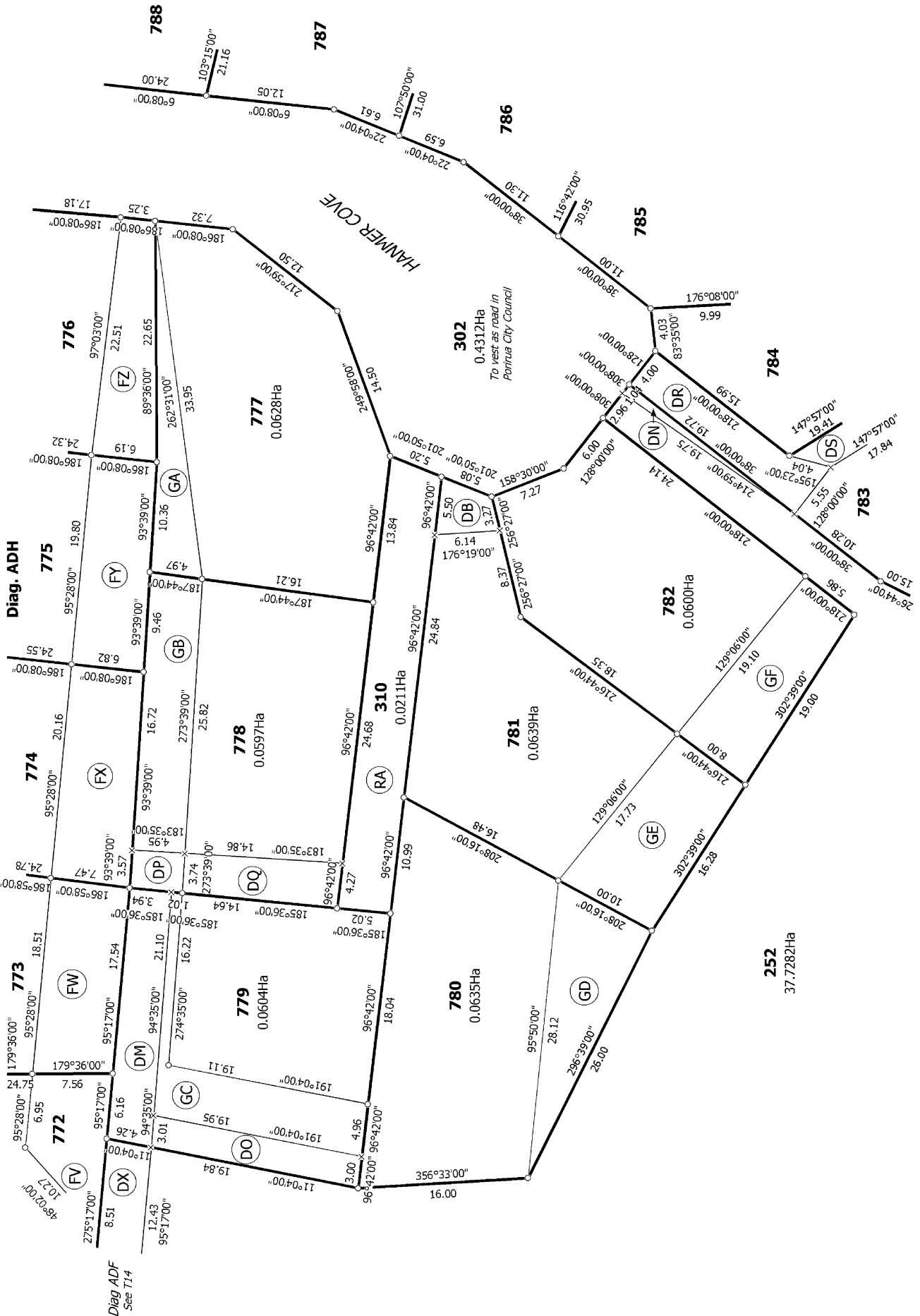
Digitally Generated Plan
Generated on: 27/04/2011 2:11pm Page 21 of 26

Lots 250-254, 300-303, 310 & 750-796 being a subdivision of Lot 1 DP 334483,
Lot 1 DP 405897 & Lot 202 DP 425357 and easement over Lot 3 DP 328361

Surveyor: Brett William Horne
Firm: Harrison Grierson Consultants Ltd (A)

Title Plan
DP 434377

Deposited on: 8/04/2011



T 11/15

Land District: Wellington

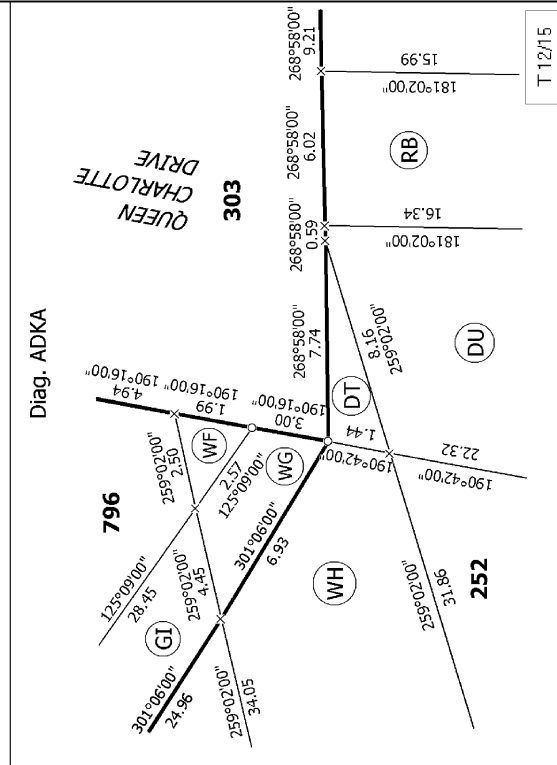
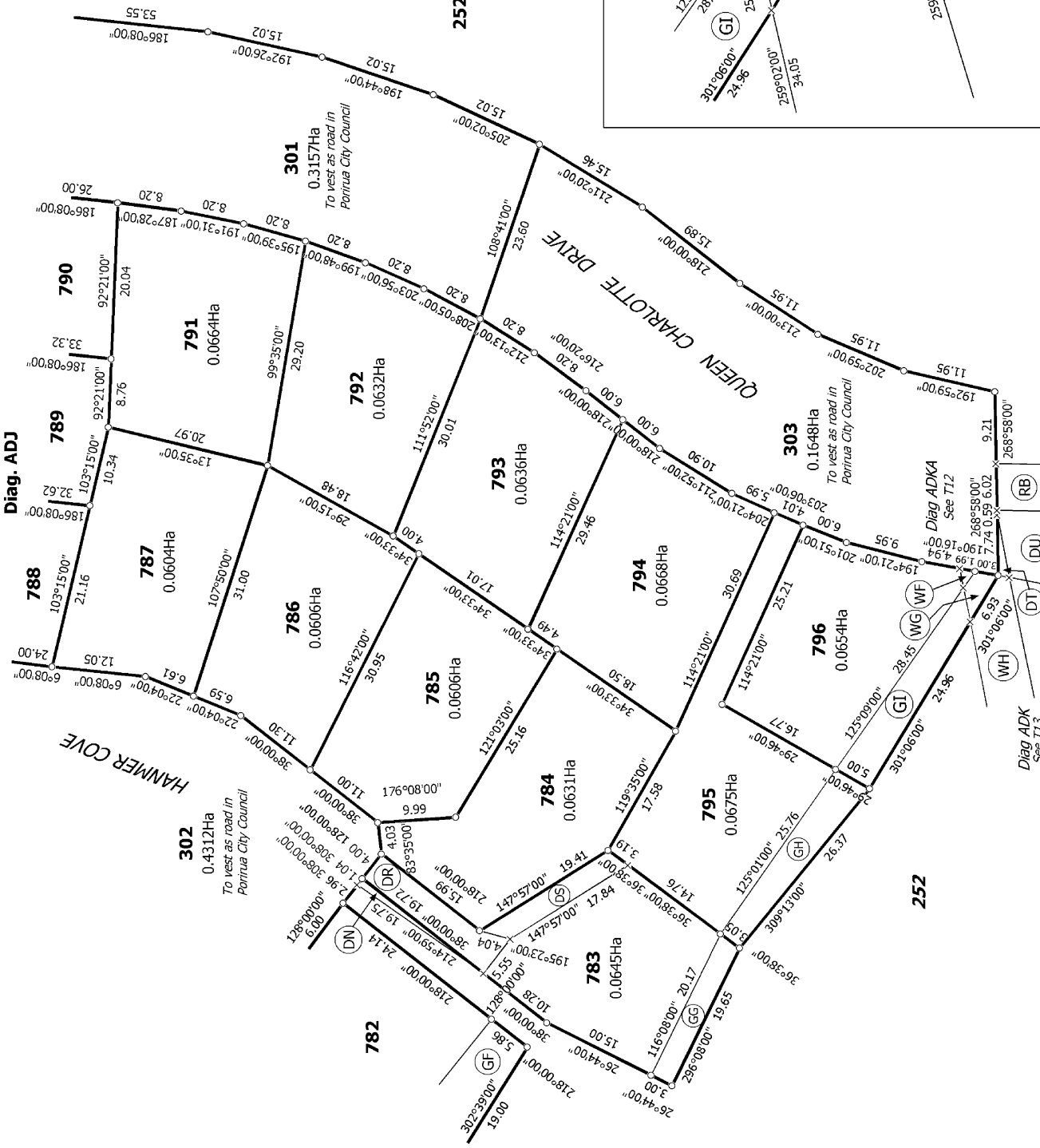
Digitally Generated Plan
Generated on: 27/04/2011 2:11pm Page 22 of 26

Lots 250-254, 300-303, 310 & 750-796 being a subdivision of Lot 1 DP 334483,
Lot 1 DP 405897 & Lot 202 DP 425357 and easement over Lot 3 DP 328361

Surveyor: Brett William Horne
Firm: Harrison Grierson Consultants Ltd (A)

Title Plan
DP 434377

Deposited on: 8/04/2011



T 12/15

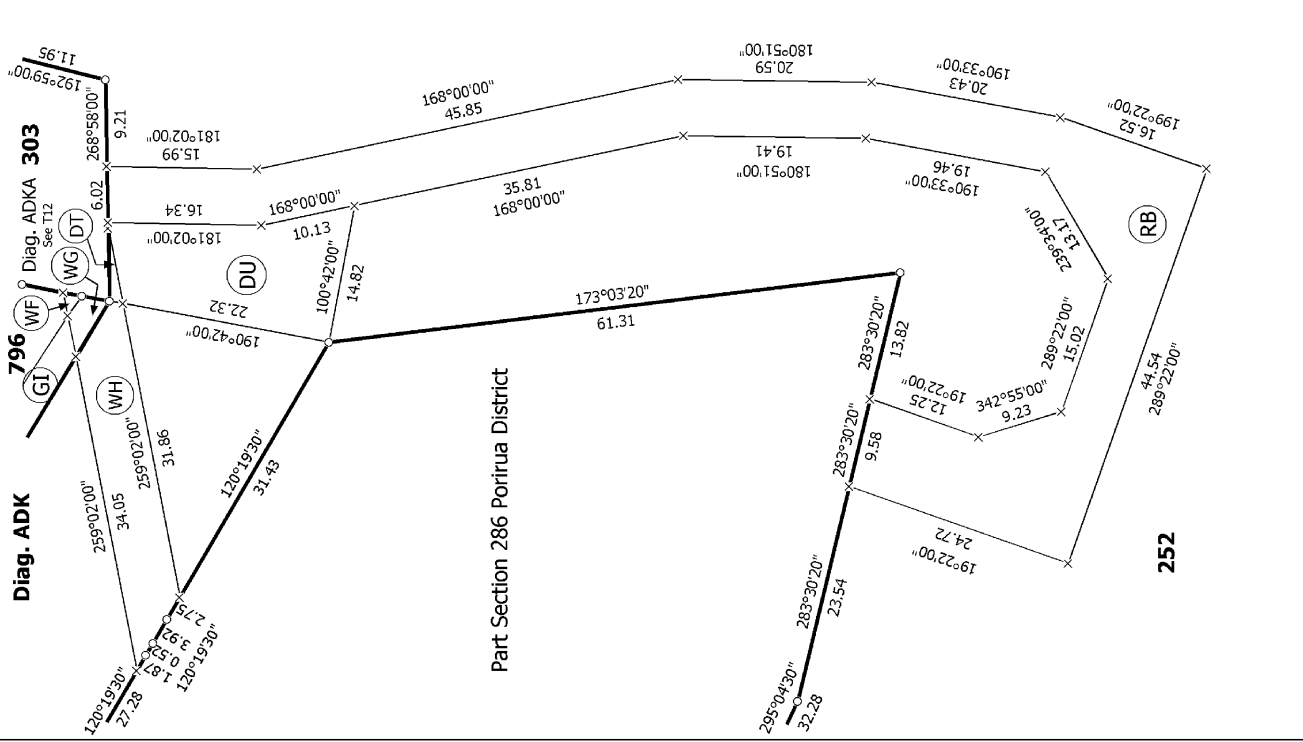
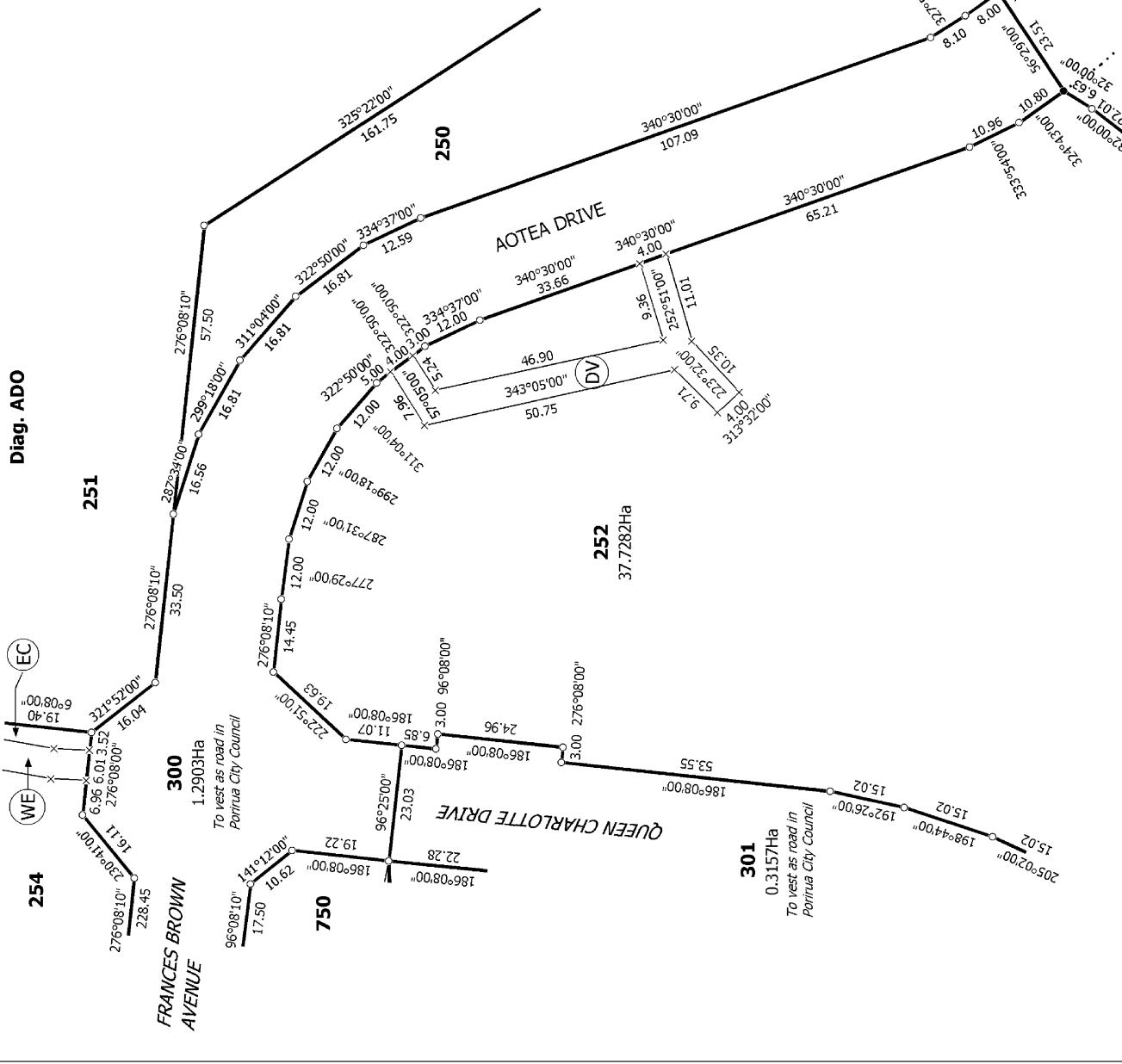
Title Plan
DP 434377

Surveyor: Brett William Horne
 Firm: Harrison Grierson Consultants Ltd (A)

Deposited on: 8/04/2011

Lots 250-254, 300-303, 310 & 750-796 being a subdivision of Lot 1 DP 334483, Lot 1 DP 405897 & Lot 202 DP 425357 and easement over Lot 3 DP 328361

Land District: Wellington
 Digitally Generated Plan
 Generated on: 27/04/2011 2:11pm Page 23 of 26



T 13/15

Title Plan
DP 434377

Surveyor: Brett William Horne
Firm: Harrison Grierson Consultants Ltd (A/L)

Deposited on: 8/04/2011

Surveyor: Brett William Horne
Firm: Harrison Grierson Consultants Ltd (A/L)

Lots 250-254, 300-303, 310 & 750-796 being a subdivision of Lot 1 DP 334483,
Lot 1 DP 405897 & Lot 202 DP 425357 and easement over Lot 3 DP 328361

Land District: Wellington

Digitally Generated Plan
Generated on: 27/04/2011 2:11pm Page 24 of 26

